



2018 Legislation Changes

Jen Davel

Senior Preservation Architect



- 60.64 (2m) In the repair or replacement of a property that is designated as a historic landmark or included within a historic district or neighborhood conservation district under this section, ***the town board shall allow an owner to use materials that are similar in design, color, scale, architectural appearance, and other visual qualities.***



How Does This Apply to Project Reviews?

Common projects:

Siding

Roofs

Windows

Doors

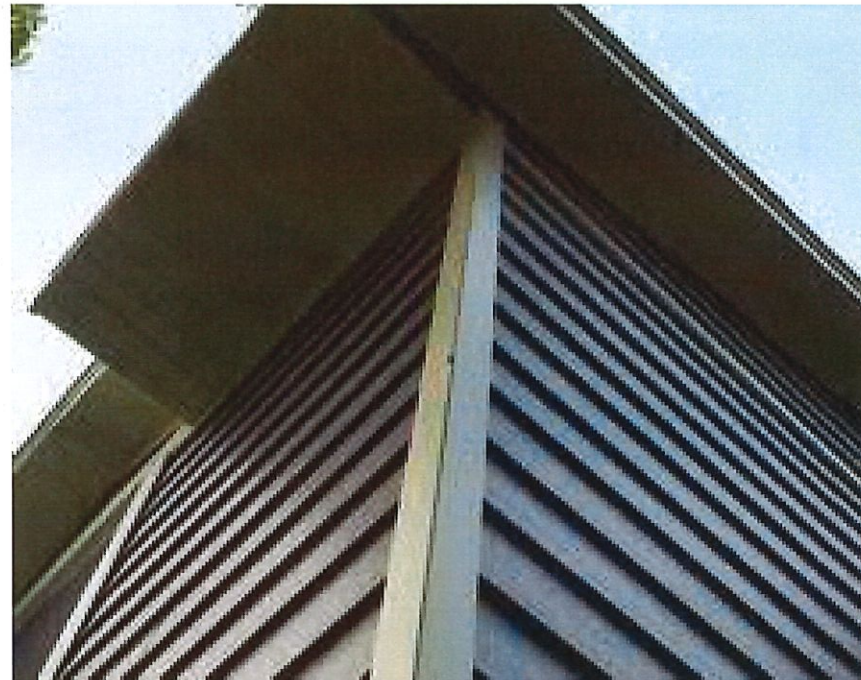
Porches

** The best match will always be the original. Whenever possible – repair before replace.*





...materials that are similar in design, color, scale, architectural appearance, and other visual qualities



...materials that are similar in design, color, scale, architectural appearance, and other visual qualities



Profile

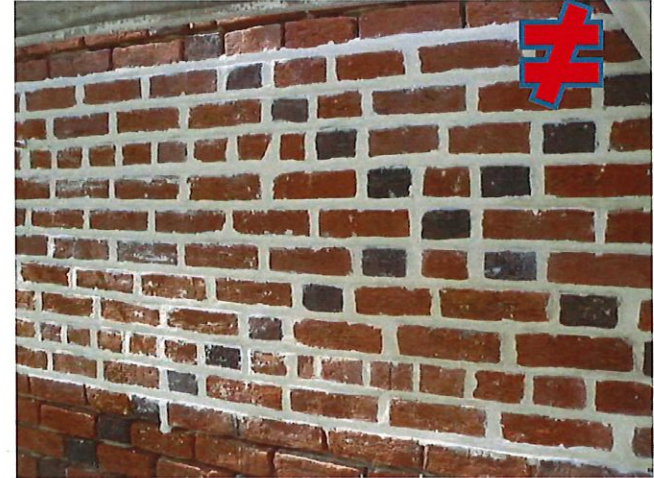
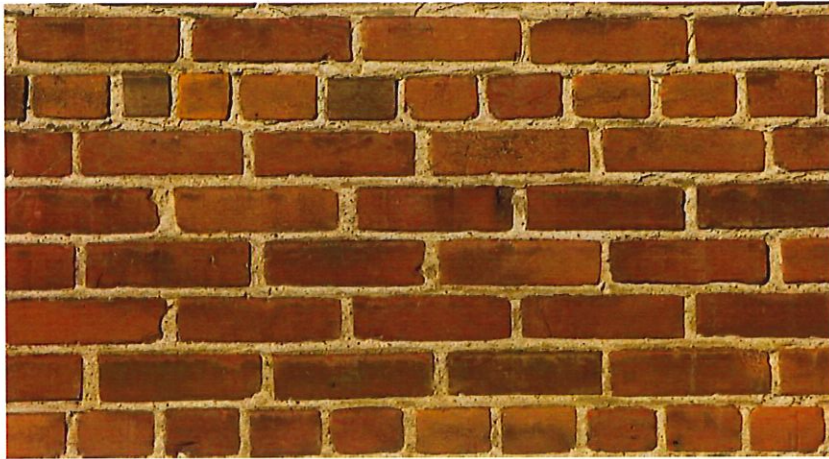
Texture

Board exposure

Board depth



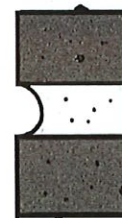
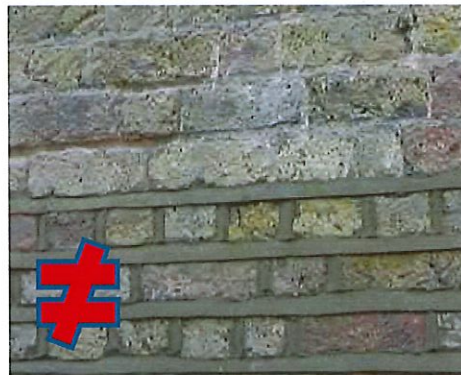
...materials that are similar in design, color, scale, architectural appearance, and other visual qualities



Color

Strike

Strength



Concave



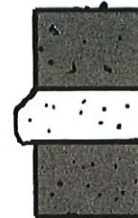
Vee



Flush



Raked



Extruded



Beaded



Struck



Weathered

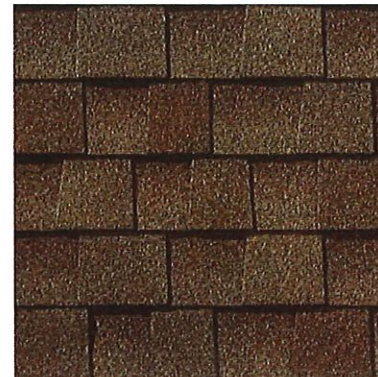
...materials that are similar in design, color, scale, architectural appearance, and other visual qualities



Wood



3-Tab



Architectural

Shingle shape

Color



Architectural



Architectural

...materials that are similar in design, color, scale, architectural appearance, and other visual qualities

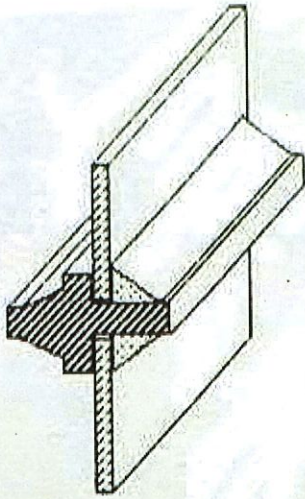


Shingle shape

Dimension

Exposure



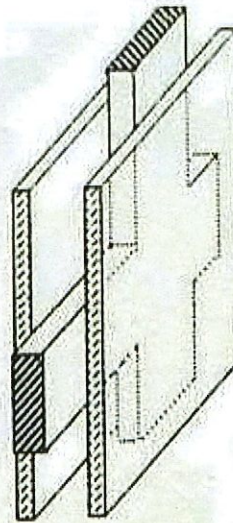


ORIGINAL
MUNTIN

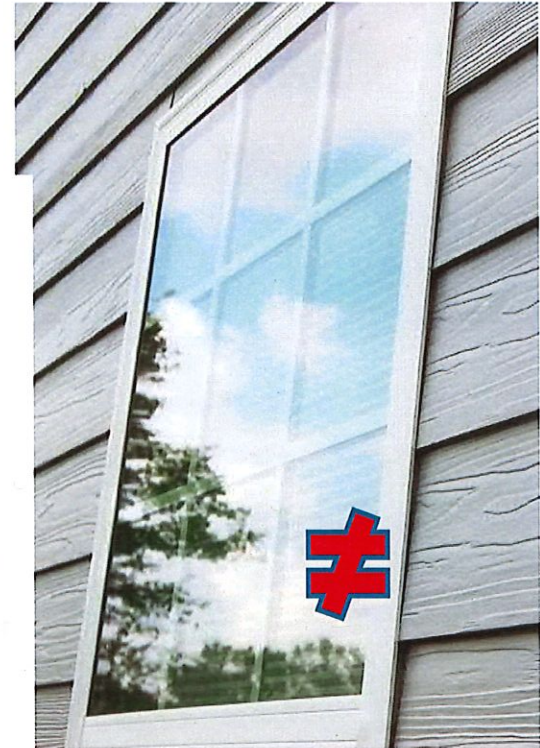


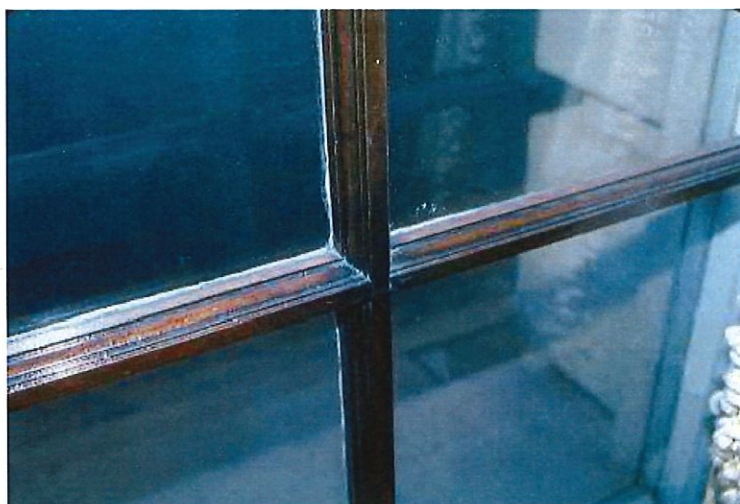
...materials that are similar in design, color, scale, architectural appearance, and other visual qualities

Dimension
Shadow lines
Off-set
Glass

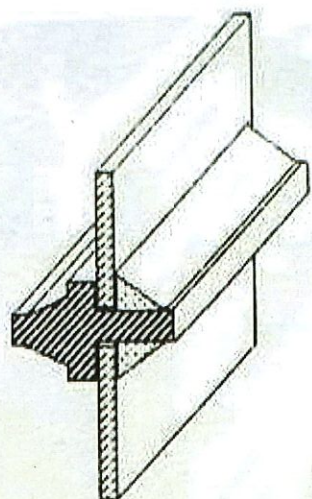


SANDWICH
MUNTIN

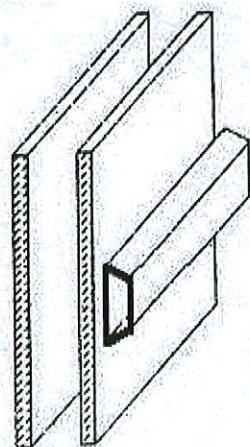




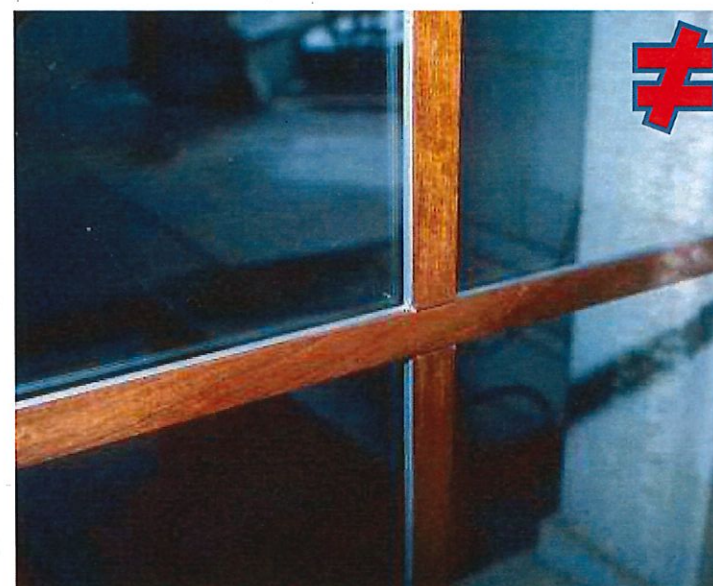
...materials that are similar in design, color, scale, architectural appearance, and other visual qualities



ORIGINAL
MUNTIN



APPLIED
MUNTIN



...materials that are similar in design, color, scale, architectural appearance, and other visual qualities



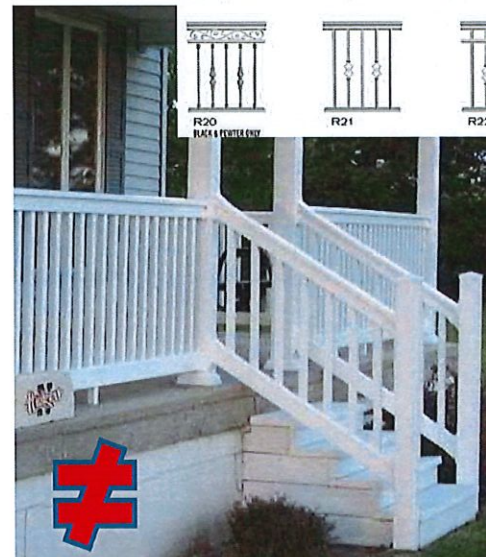
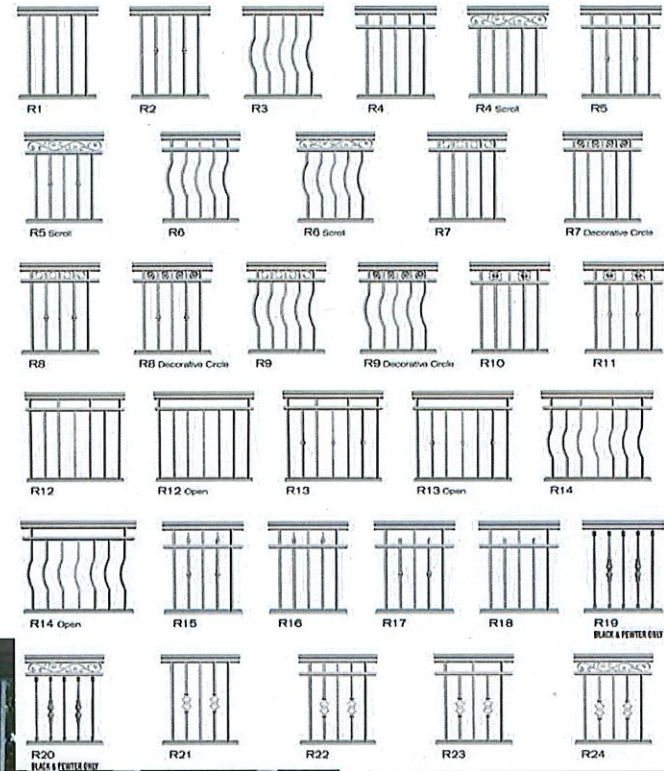
Design

Texture

Finish



...materials that are similar in design, color, scale, architectural appearance, and other visual qualities



Design

Texture

Finish

...materials that are similar in design, color, scale, architectural appearance, and other visual qualities



Design

Texture

Finish



WISCONSIN
HISTORICAL
SOCIETY

THANK YOU

wisconsinhistory.org

