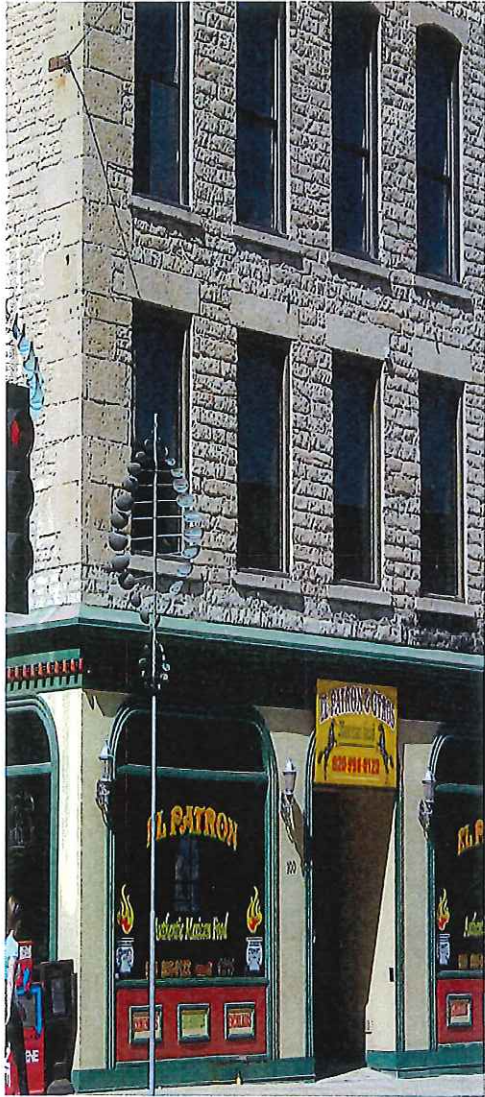


"Historic Buildings"



100 East College Avenue

Appleton Historic  
Preservation Commission  
Bookmark Series  
"Historic Buildings"



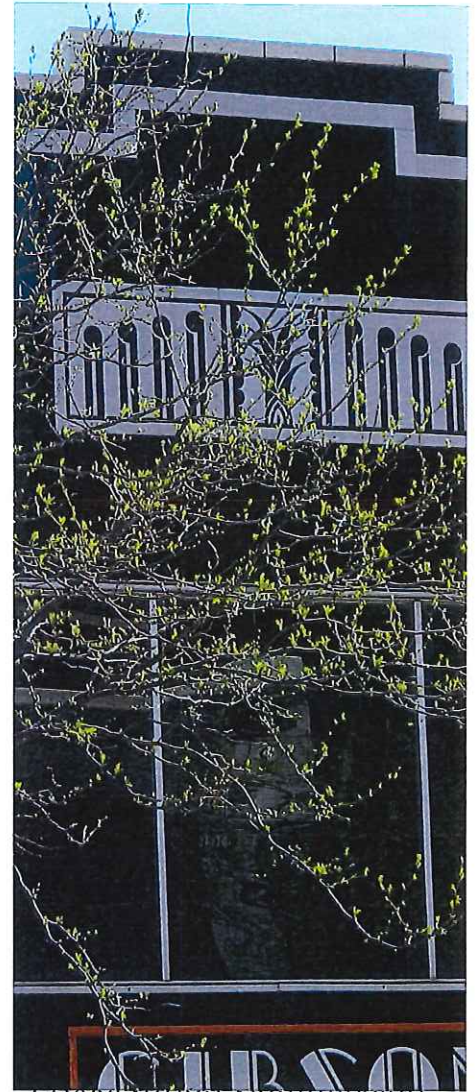
203-205 West College  
Avenue

Appleton Historic  
Preservation Commission  
Bookmark Series



207 West College Avenue

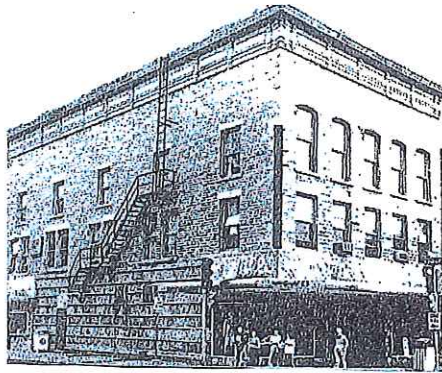
Appleton Historic  
Preservation Commission  
Bookmark Series  
"Historic Buildings"



211 West College Avenue

Appleton Historic  
Preservation Commission  
Bookmark Series





WI A & H Inventory # 39087

This structure was built in 1856 by C.G. Adkins for a general store and office space. It was the first three story building in the city and is one of the oldest standing buildings in Appleton. To preserve the building, the Avenue Mall was built around it.

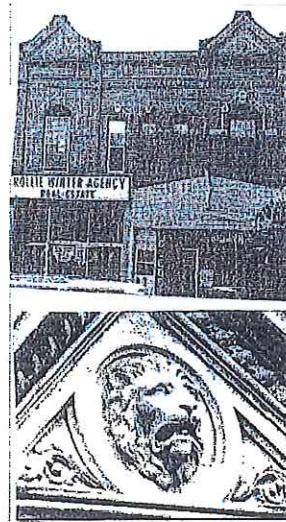
Style: Italianate

Builder: J. W. Woodward

#### Notable Features:

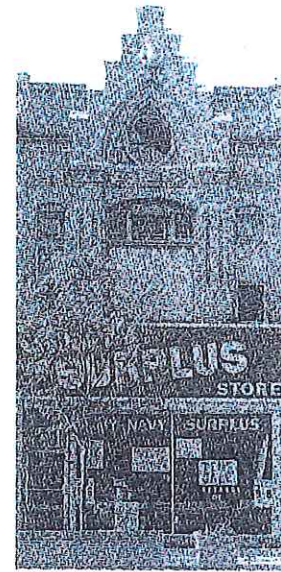
Unusual Limestone construction on 1<sup>st</sup> level of West Wall. Probably River Bed Limestone exterior with Quoins, square window heads on 2<sup>nd</sup> level, arched on 3<sup>rd</sup>.

Built by Woodward for general store and offices. Later run by his daughter and her husband Byron Douglas who was the first local dentist.



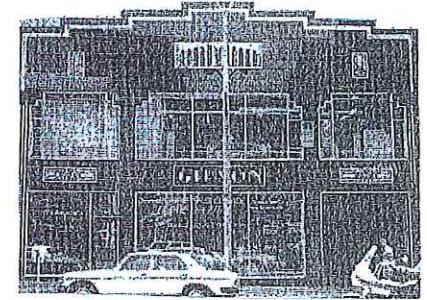
WI A & H Inventory  
203 & 205 # 39054

The Blissling Building was the home of the Appleton Post. While it is often thought that the building was owned by the Post, it was not, they only rented the upper floor. It was built with them in mind however, as the two lion heads on the façade represent the roar of truth. The Appleton Post was Appleton's third newspaper. The original name of the newspaper was the Appleton Motor. It was founded by George Miller and Alexander Reid to counter the Democratic paper, the Crescent. It ceased to exist when it merged with the crescent in 1920 to become the Post-Crescent.



WI A & H Inventory  
# 39056

Originally the home of Gerhardt Kamps and Thomas Kamps's harness shop. Gerhardt Kamps eventually bought out his brother and ran the business by himself. He was considered one of the finest leather crafters in the area. The building was designed especially for his harness shop. There was a lot to the east where horse were kept, both for his shop and the Farmers' Hotel. The facade has a carved stone horse head at the top symbolizing that he worked with horses. The building was designed by Charles Hove who was also the architect of Temple Zion, the Place Block, and the Volksfreund Building.



C.R. Meyer & Sons, Contractors, designed the building. Arresting in the sophistication of its design, Gibson's art Deco Auto Exchange is the best-preserved example of the period in Appleton. Ironically, the site was occupied by a barn, well, grade and chicken coop until the land was sold to Alenor Gibson for construction of car dealership in 1928. Completed in 1931, some fifty years after neighboring buildings, the symmetrical two-story design with its stepped roofline was well-integrated into the existing block. The Carrara glass façade with chrome-trimmed windows and mannered ornament compares well with the best designs of the era.