

# City of Appleton Comprehensive Plan Update & Downtown Plan Re-Write Plan Commission

December 12 2016



# Agenda



- Planning Process
- Demographic Highlights
- Community Priorities
- Chapters 1-5
- Chapters 6-9

## APPLETON COMPREHENSIVE PLAN

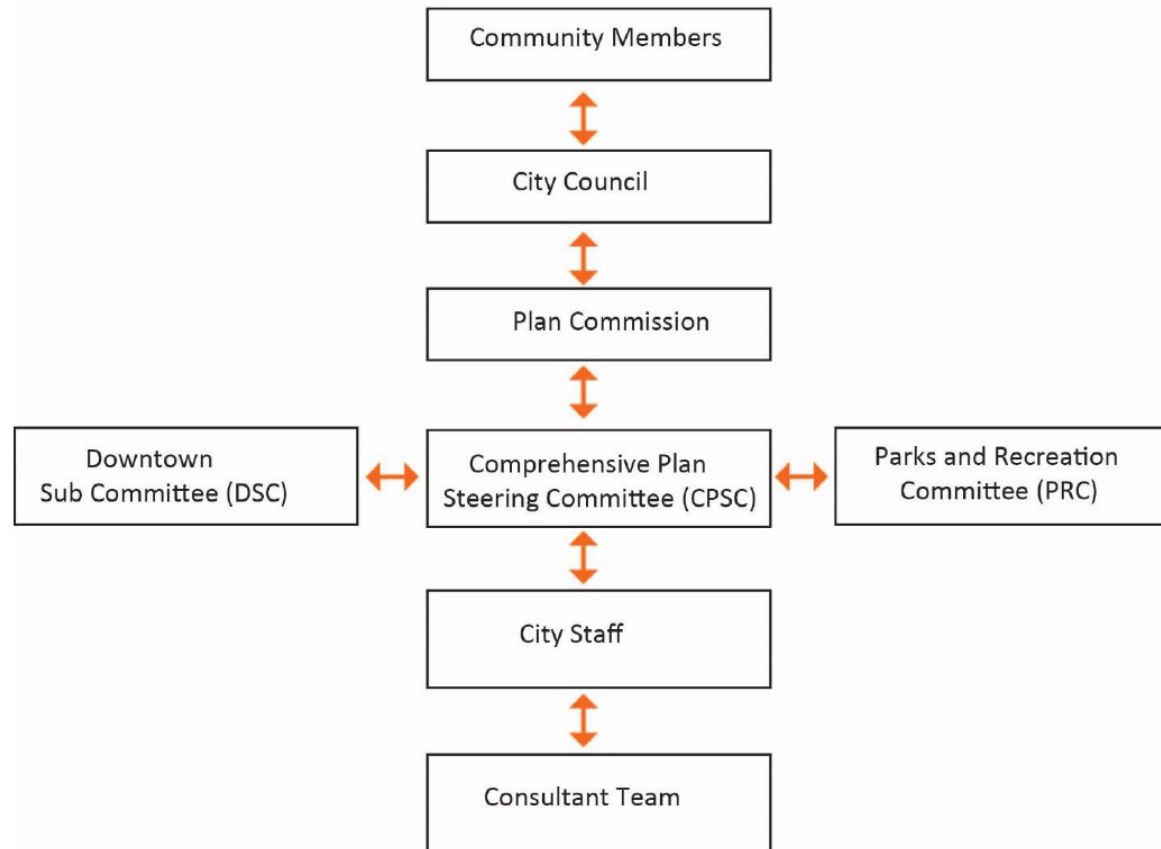
[WELCOME](#) / [ABOUT](#) / [UPDATES](#) / [DOCUMENTS](#) / [GET INVOLVED!](#) / [CONTACT US](#)



There are a lot of great things happening in Appleton today! Looking ahead, the **City of Appleton, Wisconsin** has several opportunities to further enhance community livability as well as the vibrancy of its downtown. New trail connections, refurbished parks, a potential new/or remodeled library, new housing, parking and mobility enhancements to name just a few.

The City is updating its 2010-2030 Comprehensive Plan to help identify critical issues we should be focused on and to also help guide future investments. But we need your help! Sign up for updates, attend a meeting, or take a quick survey to make sure your voice is heard!

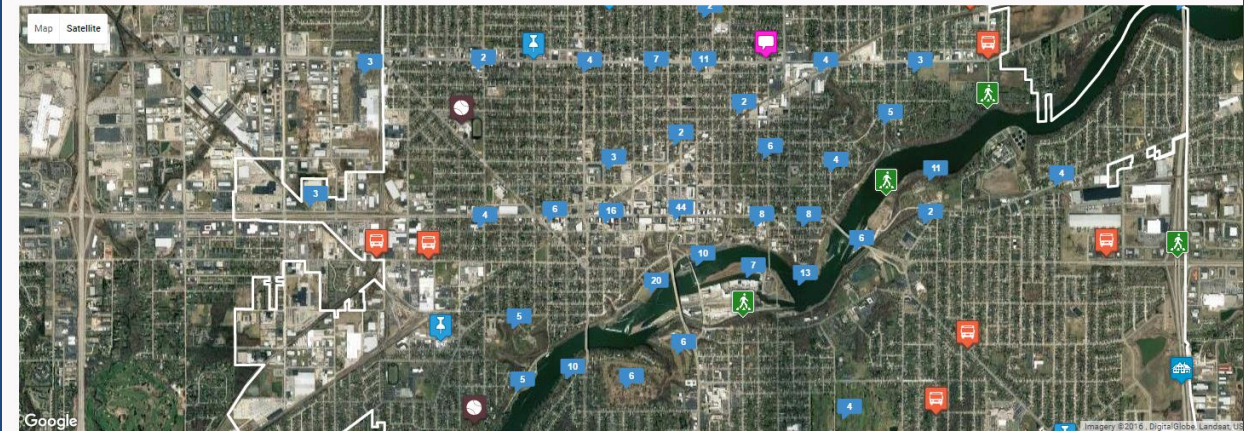
# Planning Process



# Community Priorities



- March 14-16 Workshops
- March 15 ADI Annual Meeting
- Arts, Culture Focus Groups
- Community Survey
- Key Stakeholder Interviews
- Business Interviews
- Interactive Website
- Meeting in a Box



Mapped Comments		General Comments
	Transportation / Mobility	67 Comments
	Housing	30 Comments
	Community Facilities	18 Comments
	Parks & Recreation	63 Comments

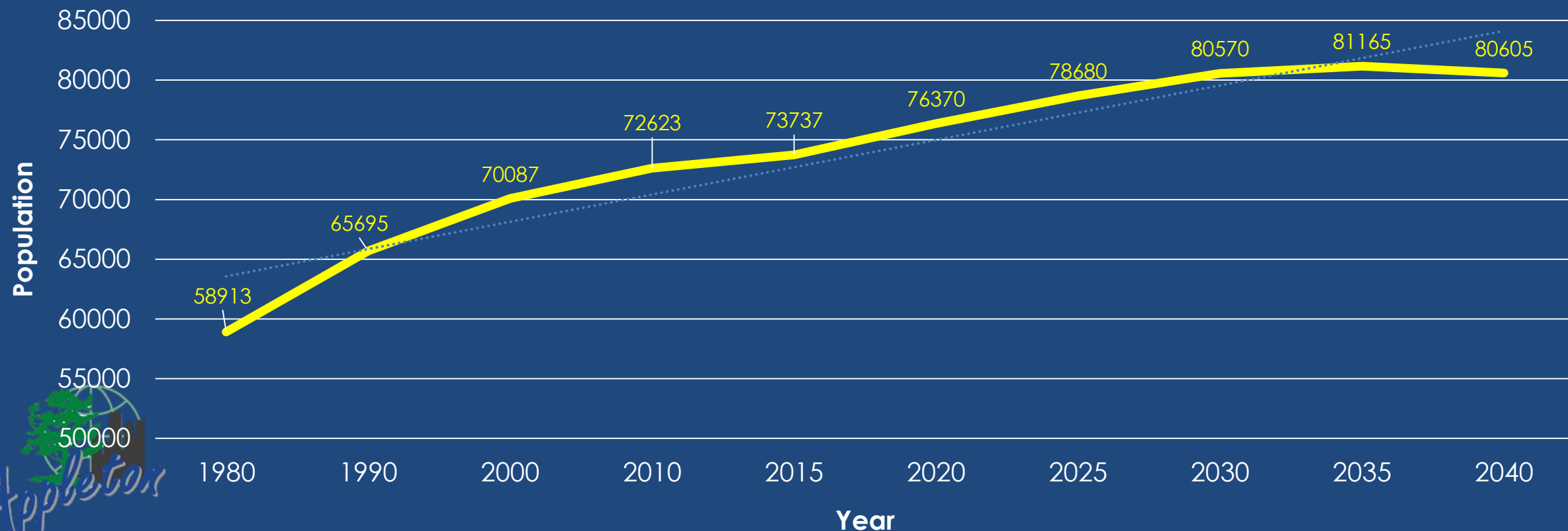
Recent comment by Anonymous  
this developer got TIF money from the city why is his strip vacant several years later

5 months  
Economic D



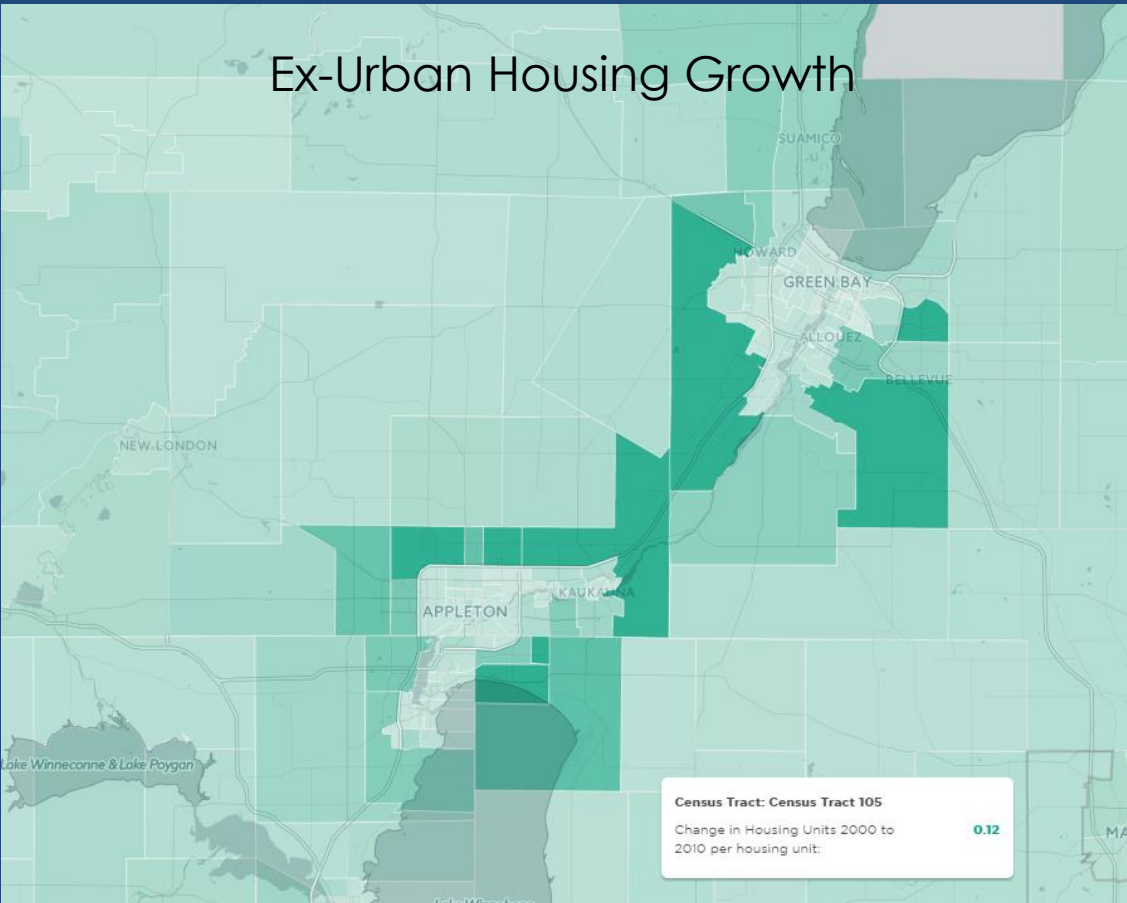
# Demographic Highlights

Population and Projections



# Demographic Highlights

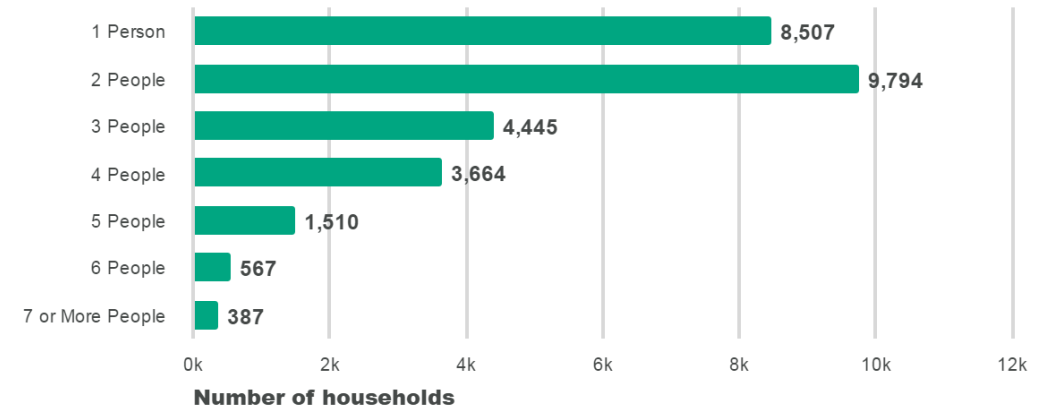
## Ex-Urban Housing Growth



## Shrinking Household Sizes Shrinking

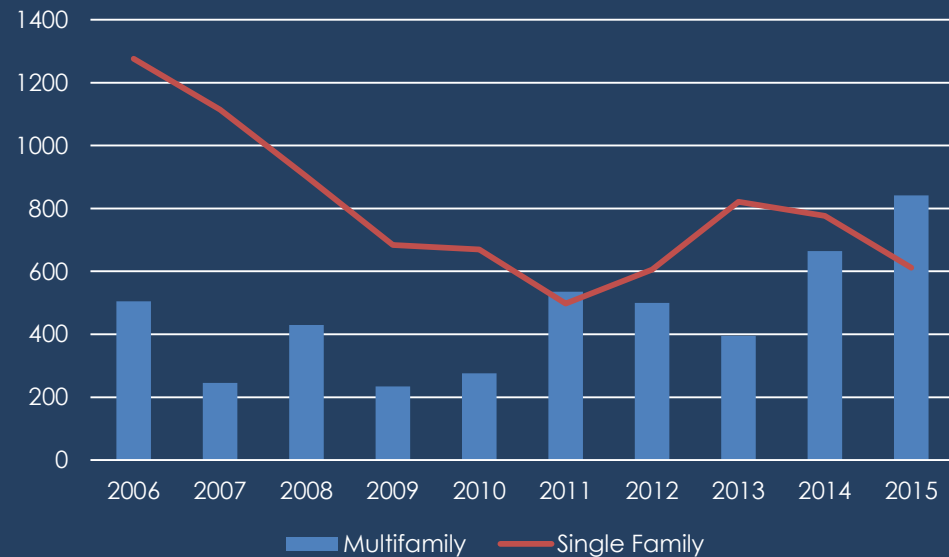
### Household Size - 2010

Appleton

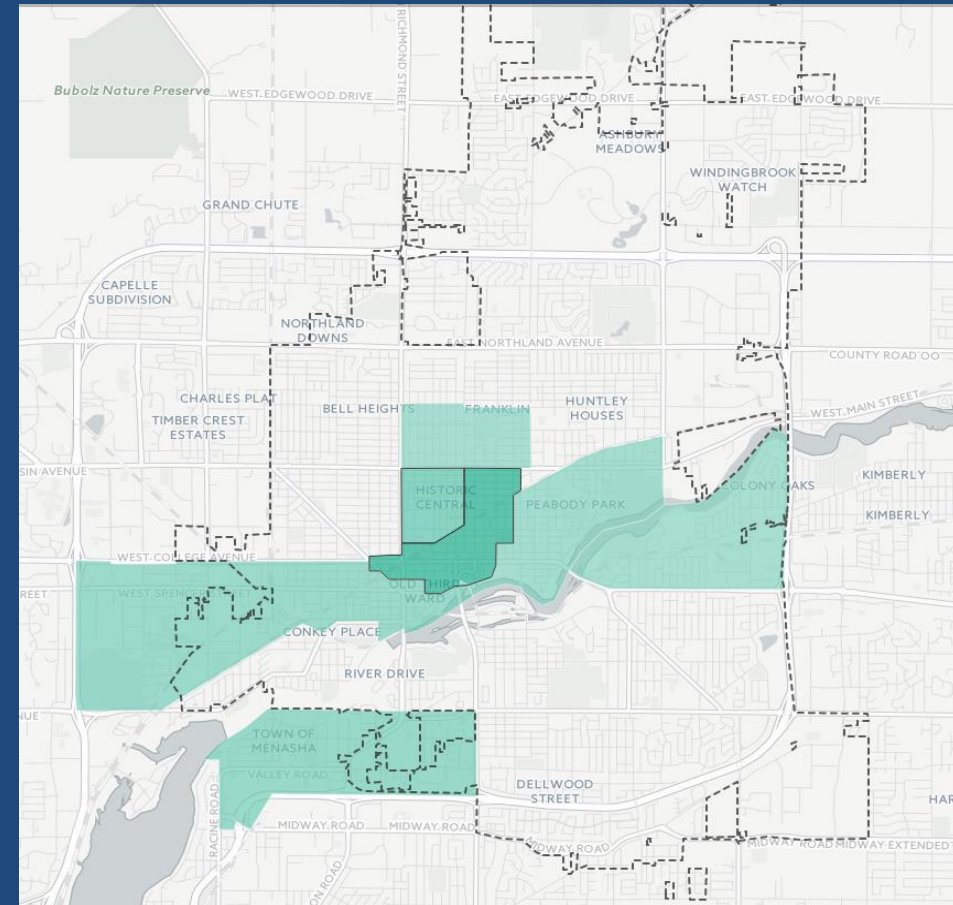


# Demographic Highlights

## Rise of Multifamily Housing – Appleton Oshkosh CSA

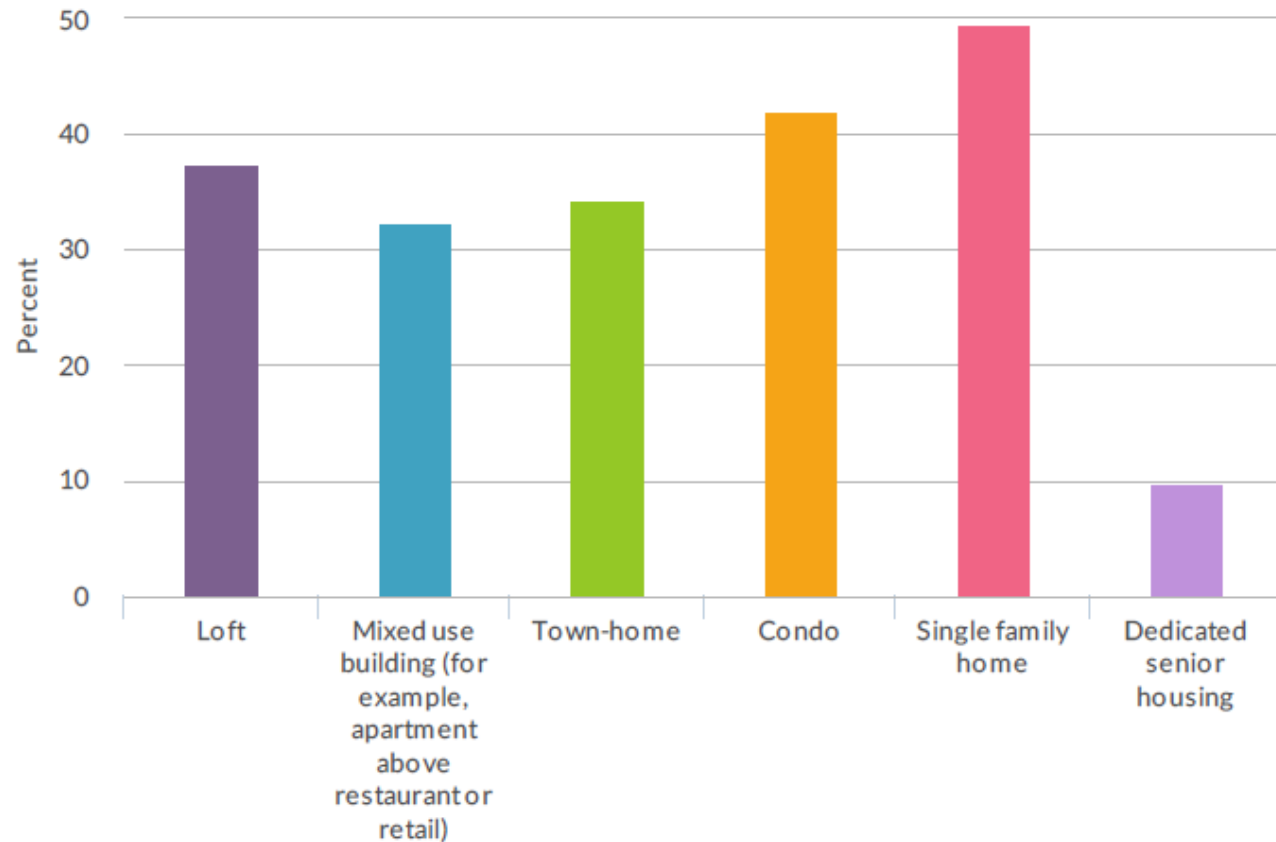


## Households Below Poverty (%)



# Demographic Highlights

Preferred Downtown Housing Type





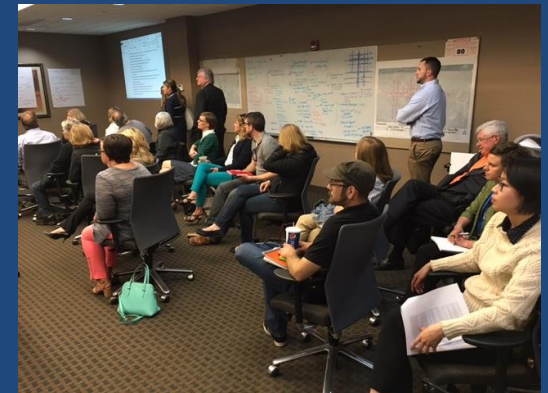
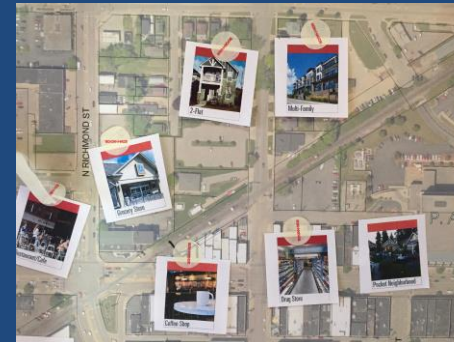
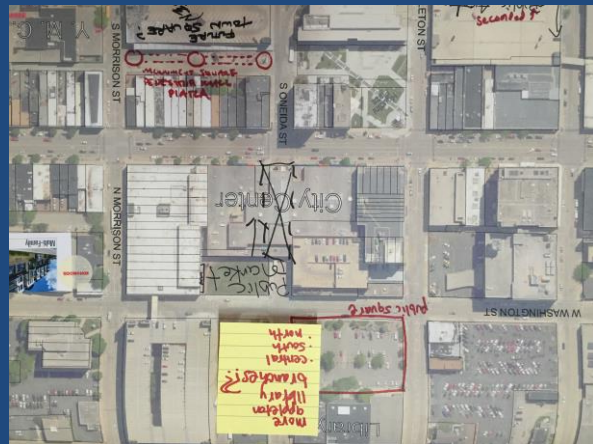
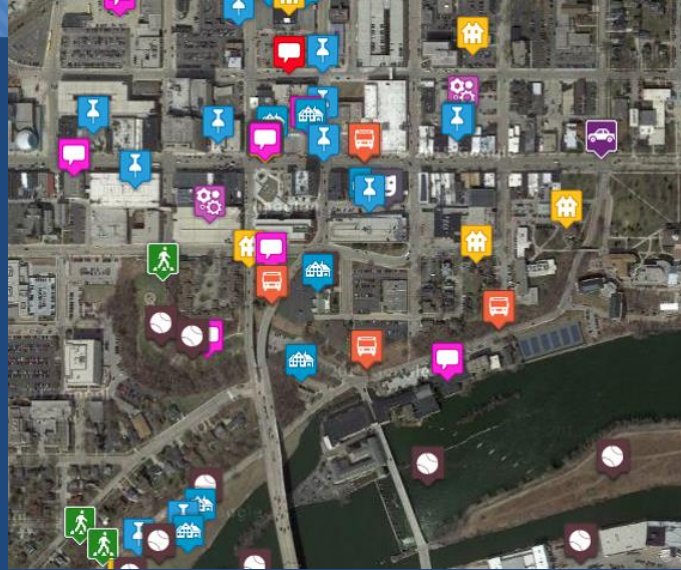
# Community Priorities



- Affordable housing
- Neighborhood safety
- More trails
- A dog park
- A new or remodeled library
- Planning for growing senior population
- Embracing diversity
- Walkability
- Corridor revitalization
- Balanced riverfront development
- Expanded grocery options downtown
- More downtown housing



# Discussion





# Housing & Neighborhoods



- Downtown: keep housing away from railroad tracks – noise and vibration
- My husband and I would love to live in downtown Appleton in a nice condo (not Apt). We think there would be interest from many empty nesters!
- Make sure Appleton has proportional representation of region of affordable housing
- Please look at underground utilities
- I would like to see more housing in downtown Appleton in terms of condos. Condo owners would patronize the downtown area and make the downtown area vibrant.
- Most important to me at this time is housing development downtown. I feel the city is way behind on this and I believe there is much interest. I am retired and we would very much like to live downtown as would a some of my friends families.



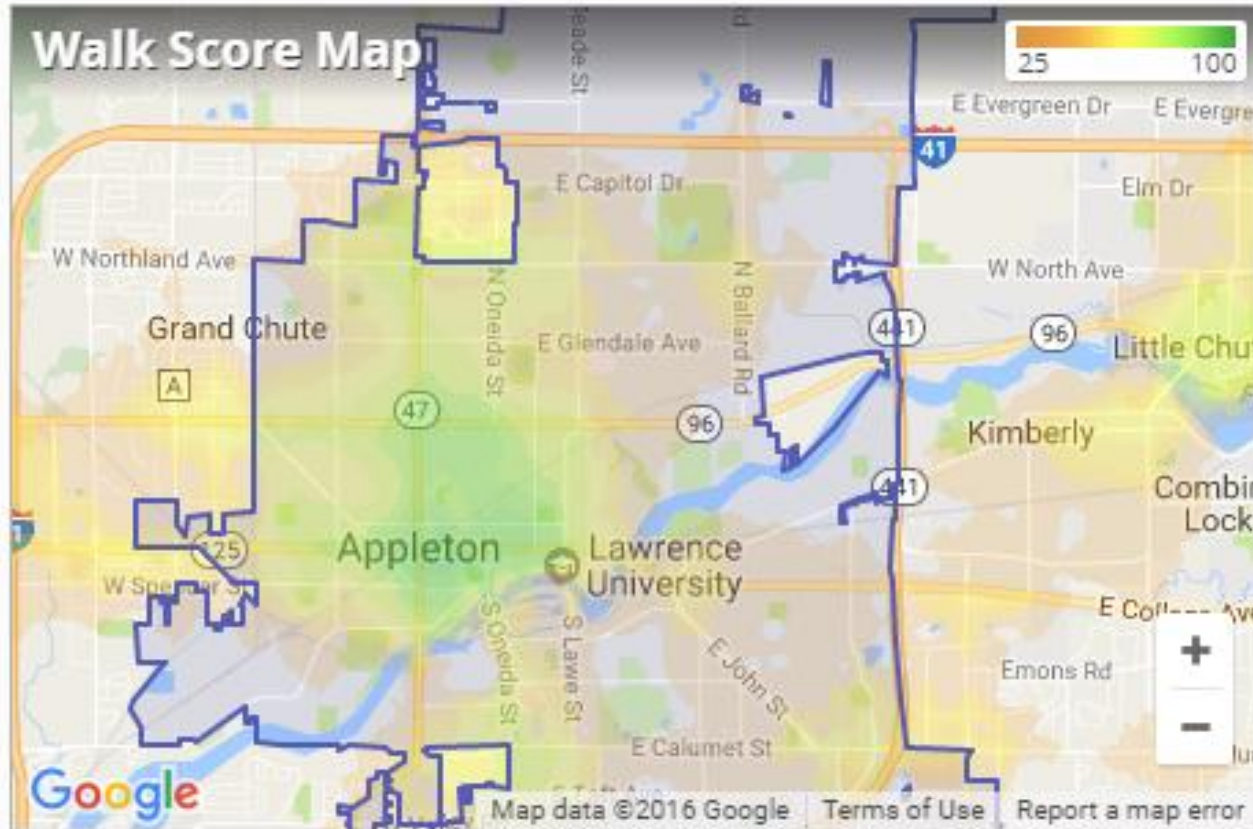
# Transportation



Walk Score  
**39**

**Appleton is a Car-Dependent city**

Most errands require a car.



Mos

**“Most errands  
require a car”  
(walkscore.com)**



# Transportation



- Walkability
- Pedestrian Access & Safety
- Streets as Public Spaces
- Appleton Downtown Mobility Plan, Trails Plan
- Land Use & Transportation



# Utilities & Community Facilities



## TOP HOPES

- Crime
- Safety
- New library
- Embracing the river



# Utilities & Community Facilities



- Added water/sewer plan updates
- Support for new/remodeled Appleton Public Library
- Access Appleton
- Support educational partnerships & coordination
  - “Educational Summit”

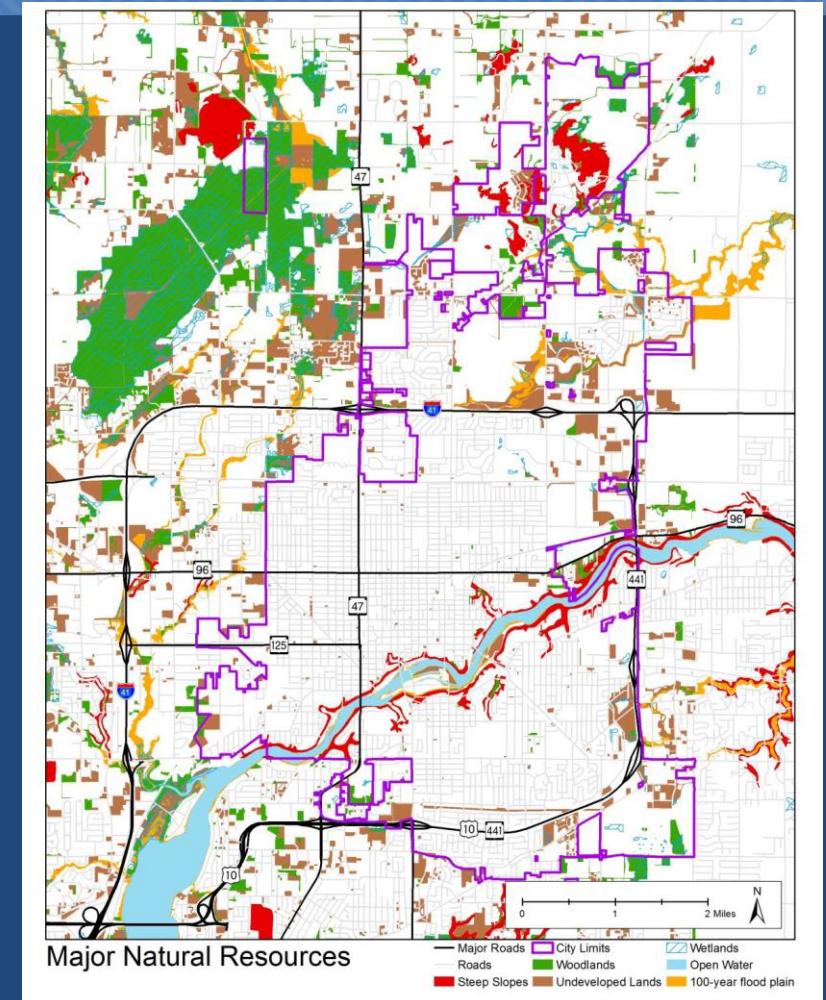




# ANHC Resources



- Community gardens
- Embracing diversity
- Arts & Culture





# ANHC Resources



- Cultural Arts Plan
- Downtown amphitheater
- Urban agriculture
- Continue support for diverse community programming



# Economic Development



- Exhibition center
- Expanded grocery near downtown
- More neighborhood restaurants/services
- Small theater downtown



# Economic Development



- Incorporated Appleton Economic Development Strategic Plan (AEDSP)
- Educational partnerships & workforce development
- Support efforts to retain LU graduates





# QUESTIONS?

