



# City of Appleton

100 North Appleton Street  
Appleton, WI 54911-4799  
[www.appleton.org](http://www.appleton.org)

## Meeting Agenda - Final Municipal Services Committee

---

Tuesday, September 13, 2016

6:30 PM

Council Chambers, 6th Floor

---

1. Call meeting to order
2. Roll call of membership
3. Approval of minutes from previous meeting

[16-1410](#) Minutes from August 23, 2016.

**Attachments:** [Minutes from August 23, 2016.pdf](#)

### 4. Public Hearings/Apearances

### 5. Action Items

[16-1336](#) Request from Brad Engel for a variance to extend the driveway at 1813 N. Charlotte Street 10 feet into the front yard.

**Attachments:** [1813 N Charlotte Street-driveway.pdf](#)

**Legislative History**

8/23/16      Municipal Services      held  
Committee  
*Hold item 16-1336 until September 13, 2016.*

[16-1195](#) Resolution #8-R-16  
Submitted by Alderperson Lobner

WHEREAS a well-maintained lawn is a high priority for many Appleton residents,

AND WHEREAS sumac plants growing near property lines may spread across boundaries and become difficult to remove in unwanted areas without damaging the affected lawns,

THEREFORE BE IT RESOLVED that the City of Appleton shall ban the planting of sumac plants near property boundaries.

*Referred to the Municipal Services Committee*

**Legislative History**

7/26/16      Municipal Services      held  
Committee  
*Held until August 9th Municipal Services Committee Meeting.*

8/9/16      Municipal Services      held  
Committee  
*Hold item 16-1195 until August 23, 2016 meeting.*

8/23/16      Municipal Services      held  
Committee  
*Item 16-1195 be held until September 13, 2016.*

[16-1411](#)      Approve City of Appleton Downtown Business Access Assistance Policy.

**Attachments:** [Appleton Downtown Business Access Assistance Policy.pdf](#)

[16-1413](#)      Lynndale Drive, from Leonard Street to Everett Street, be reconstructed with concrete pavement to a width of 41' from back of curb to back of curb, which is 8' narrower than the existing street. New concrete sidewalk would be constructed along both sides of Lynndale Drive within the project limits at all locations where existing sidewalk does not exist. Existing parking provisions within the project limits will remain unchanged.

[16-1414](#)      Lincoln Street, from Olde Oneida Street to approximately 230' east of Olde Oneida Street, be reconstructed with asphalt pavement and concrete curb & gutter to a width of 37' from back of curb to back of curb, which is 4' wider than the existing street. Lincoln Street, from approximately 230' east of Olde Oneida Street to Madison Street, be reconstructed with asphalt pavement and concrete curb & gutter to a width of 31' from back of curb to back of curb, which is 2' narrower than the existing street. Existing parking provisions within the project limits will remain unchanged.

[16-1415](#)      Marquette Street, from Division Street to Oneida Street, be reconstructed with asphalt pavement and concrete curb & gutter to a width of 31' from back of curb to back of curb, which is 2' narrower than the existing street. Existing parking provisions within the project limits will remain unchanged.

[16-1416](#) Summer Street, from Morrison Street to Drew Street, be reconstructed with asphalt pavement and concrete curb & gutter to a width of 35' from back of curb to back of curb, which is 2' narrower than the existing street. Summer Street, from Drew Street to Union Street, be reconstructed with asphalt pavement and concrete curb & gutter to a width of 33' from back of curb to back of curb, which is 4' narrower than the existing street. Existing parking provisions within the project limits will remain unchanged.

[16-1417](#) Catherine Street, from Washington Street to North Street, be reconstructed with asphalt pavement and concrete curb & gutter to a width of 31' from back of curb to back of curb, which is 2' narrower than the existing street. New concrete sidewalk would be constructed along the east side of Catherine Street from Franklin Street to Eldorado Street. Existing parking provisions within the project limits will remain unchanged.

[16-1418](#) Mary Street, from North Street to Pacific Street, be reconstructed with asphalt pavement and concrete curb & gutter to a width of 26', which is 1' narrower than the existing street. The curb and gutter along the east side of Mary Street will be narrowed by 1', which will save 5 existing street trees along the east side of the street. Parking would be prohibited along the east side of Mary Street within the project limits.

[16-1419](#) The alley west of Perkins Street, from Charles Street to Perkins Street, be reconstructed with concrete pavement to a width of 20' from edge of pavement to edge of pavement, which is the same width as the existing alley. Existing parking provisions within the project limits will remain unchanged.

[16-1420](#) Kamps Avenue, from Fire Station #5 to Douglas Street, be reconstructed with concrete pavement to a width of 29' from back of curb to back of curb, which is 4' wider than the existing street. New concrete sidewalk would be constructed along the south side of Kamps Avenue within the project limits. Parking would be prohibited along the south side of Kamps Avenue within the project limits.

[16-1421](#) Drew Street, from Glendale Avenue to Pershing Street, be reconstructed with asphalt pavement and concrete curb & gutter to a width of 33' from back of curb to back of curb, which is the same width as the existing street. Curb bumpouts would be constructed at the intersections with Marquette Street, Byrd Street, and Lindbergh Street to improve the pedestrian safety along Drew Street adjacent to Franklin Elementary School. Existing parking provisions within the project limits will remain unchanged.

[16-1422](#) Sanders Street, from Seymour Street to Verbrick Street, be reconstructed with asphalt pavement and concrete curb & gutter to a width of 31' from back of curb to back of curb, which is 2' narrower than the existing street. Existing parking provisions within the project limits will remain unchanged.

[16-1423](#) Reeve Street, from Linwood Street to Winnebago Street, be reconstructed with asphalt pavement and concrete curb & gutter to a width of 27' from back of curb to back of curb, which is 1' narrower than the existing street. The curb and gutter along the north side of Reeve Street will be narrowed by 1', which will save 7 existing street trees along the north side of the street. Existing parking provisions within the project limits will remain unchanged.

[16-1424](#) Winnebago Street, from Linwood Street to Badger Avenue, be reconstructed with asphalt pavement and concrete curb & gutter to a width of 33' from back of curb to back of curb, which is 4' narrower than the existing street. Existing parking provisions within the project limits will remain unchanged.

[16-1426](#) Approve Amendment No. 1 to the Collins Engineers, Inc. Contract for the Movable Bridge Inspections to design repairs needed for the trunnion foundation and a girder drainage protection system for the Olde Oneida Street Bridge over the Navigational Canal in an amount not to exceed \$7,620 (revised contract amount of \$87,620).

**Attachments:** [Collins Engineers.pdf](#)

[16-1427](#) Approve No Parking Zone on Harrison Street, east of Oneida Street.

**Attachments:** [No Parking Zone Harrison Street.pdf](#)

- [16-1428](#) Approve traffic related ordinance changes for the John Street Reconstruction Project from Banta Court to Matthias Street.

**Attachments:** [Traffic related ordinance change John Street.pdf](#)

## 6. Information Items

- [16-1429](#) Inspection Division Permit Summary Comparison Report for August, 2016.

**Attachments:** [Inspection Division Permit Summary Comparison Report August 2016.pdf](#)

- [16-1431](#) Discuss clarification to Downtown Meter Bag Policy as it pertains to Uber Driver requests.

- [16-1432](#) Downtown Mobility Study Implementation Plan for 2016:
1. Walk Your Wheels
  2. Crosswalk Pavement Marking
  3. 90 Day Trial for flashing traffic signals at Franklin/Oneida Street and Franklin/Superior Street.

**Attachments:** [Walk your Wheels.pdf](#)

## 7. Adjournment

*Notice is hereby given that a quorum of the Common Council may be present during this meeting, although no Council action will be taken.*

*Reasonable Accommodations for Persons with Disabilities will be made upon Request and if Feasible. If you have any questions please call Paula Vandehey at 920-832-6474.*



# City of Appleton

100 North Appleton Street  
Appleton, WI 54911-4799  
[www.appleton.org](http://www.appleton.org)

## Meeting Minutes - Final Municipal Services Committee

---

Tuesday, August 23, 2016

6:30 PM

Council Chambers, 6th Floor

---

1. Call meeting to order

2. Roll call of membership

**Present:** 3 - Croatt, Martin and Mann

**Excused:** 2 - Coenen and Konetzke

3. Approval of minutes from previous meeting

[16-1348](#)

Minutes from August 9, 2016

**Attachments:** [Minutes from August 9, 2016.pdf](#)

Martin moved, seconded by Mann, that the Minutes be approved. Roll Call.  
Motion carried by the following vote:

**Aye:** 3 - Croatt, Martin and Mann

**Excused:** 2 - Coenen and Konetzke

4. Public Hearings/Apearances

[16-1334](#)

Design Hearing for the following streets in the 2018 pavement reconstruction program:

- a. Drew Street (Glendale Avenue to Pershing Street)
- b. Kamps Avenue (Fire Station #5 to Douglas Street)
- c. Reeve Street (Linwood Avenue to Winnebago Street)
- d. Sanders Street (Seymour Street to Verbrick Street)
- e. Winnebago Street (Linwood Avenue to Badger Avenue)

**Attachments:** [August 16, 2016 Public Information Session.pdf](#)

5. Action Items

[16-1335](#)

Approve recommended Scenario #4 in the Railroad Quiet Zone Report.

**Attachments:**    [Email from Deann Brosman.pdf](#)  
                              [Railroad Quiet Zone-Bruce Hamachek.pdf](#)  
                              [Appleton Quiet Zone Final.pdf](#)

Mann moved, seconded by Martin, that the Report Action Item be recommended for approval. Roll Call. Motion carried by the following vote:

Aye: 3 - Croatt, Martin and Mann

Excused: 2 - Coenen and Konetzke

[16-1278](#)

Request from Tim Lutz, 2013 S. Jefferson Street, for a variance to the City's Building Addressing Policy that states "Accessory buildings will not be allowed to have distinct official addresses."

**Attachments:**    [Tim Lutz-2013 S. Jefferson Street.pdf](#)  
                              [Application for Home Occupation.pdf](#)

Martin moved, seconded by Croatt, that the Report Action Item be recommended for denial. Roll Call. Motion carried by the following vote:

Aye: 3 - Croatt, Martin and Mann

Excused: 2 - Coenen and Konetzke

[16-1336](#)

Request from Brad Engel for a variance to extend the driveway at 1813 N. Charlotte Street 10 feet into the front yard.

**Attachments:**    [1813 N Charlotte Street-driveway.pdf](#)

*Hold item 16-1336 until September 13, 2016.*

Croatt moved, seconded by Mann, that the Report Action Item be held. Roll Call. Motion carried by the following vote:

Aye: 3 - Croatt, Martin and Mann

Excused: 2 - Coenen and Konetzke

[16-1337](#)

Request from Justin Long to waive his \$160 Weed Administration Fee for the empty lot across from 917 S. Daybreak Drive.

**Attachments:**    [Vacant lot-Daybreak Drive.pdf](#)

Martin moved, seconded by Croatt, that the Report Action Item be recommended for denial. Roll Call. Motion carried by the following vote:

Aye: 3 - Croatt, Martin and Mann

Excused: 2 - Coenen and Konetzke

[16-1338](#)

Request from Lynn Driessen to waive her second \$50 Weed



Administration Fee for 312 E. Calumet Street.

**Attachments:**     [312 E. Calumet Street.pdf](#)

Mann moved, seconded by Martin, that the Report Action Item be recommended for denial. Roll Call. Motion carried by the following vote:

Aye: 3 - Croatt, Martin and Mann

Excused: 2 - Coenen and Konetzke

[16-1195](#)

Resolution #8-R-16  
Submitted by Alderperson Lobner

WHEREAS a well-maintained lawn is a high priority for many Appleton residents,

AND WHEREAS sumac plants growing near property lines may spread across boundaries and become difficult to remove in unwanted areas without damaging the affected lawns,

THEREFORE BE IT RESOLVED that the City of Appleton shall ban the planting of sumac plants near property boundaries.

*Referred to the Municipal Services Committee*

*Item 16-1195 be held until September 13, 2016.*

Martin moved, seconded by Mann, that the Report Action Item be held. Roll Call. Motion carried by the following vote:

Aye: 3 - Croatt, Martin and Mann

Excused: 2 - Coenen and Konetzke

[16-1240](#)

Request from Appleton Downtown Inc. and Miron Construction to paint a mural "It starts with a Dream" on the Oneida Street side of the Blue Ramp at no larger than a total of 350 square feet.

**Attachments:**     [ADI-Mural on Blue Ramp.pdf](#)

*Item 16-1240 was withdrawn.*

[16-1342](#)

Approve Bike Lane Retrofit Project on John Street (Matthias Street to Calumet Street)

**Attachments:**     [Addition of bike lanes on John St.pdf](#)

Martin moved, seconded by Mann, that the Report Action Item be recommended for approval. Roll Call. Motion carried by the following vote:



Aye: 3 - Croatt, Martin and Mann

Excused: 2 - Coenen and Konetzke

**6. Information Items**

**7. Adjournment**

Martin moved, seconded by Mann, that the meeting be adjourned. Roll Call.  
Motion carried by the following vote:

Aye: 3 - Croatt, Martin and Mann

Excused: 2 - Coenen and Konetzke

## Paula Vandehey

---

**From:** Kurt Craanen  
**Sent:** Friday, August 05, 2016 5:20 PM  
**To:** Paula Vandehey  
**Subject:** Fwd: Brad Engel 1813 N Charlotte st Driveway

Paula:

Can you put this case on the next municipal services agenda?

Sent from my iPhone

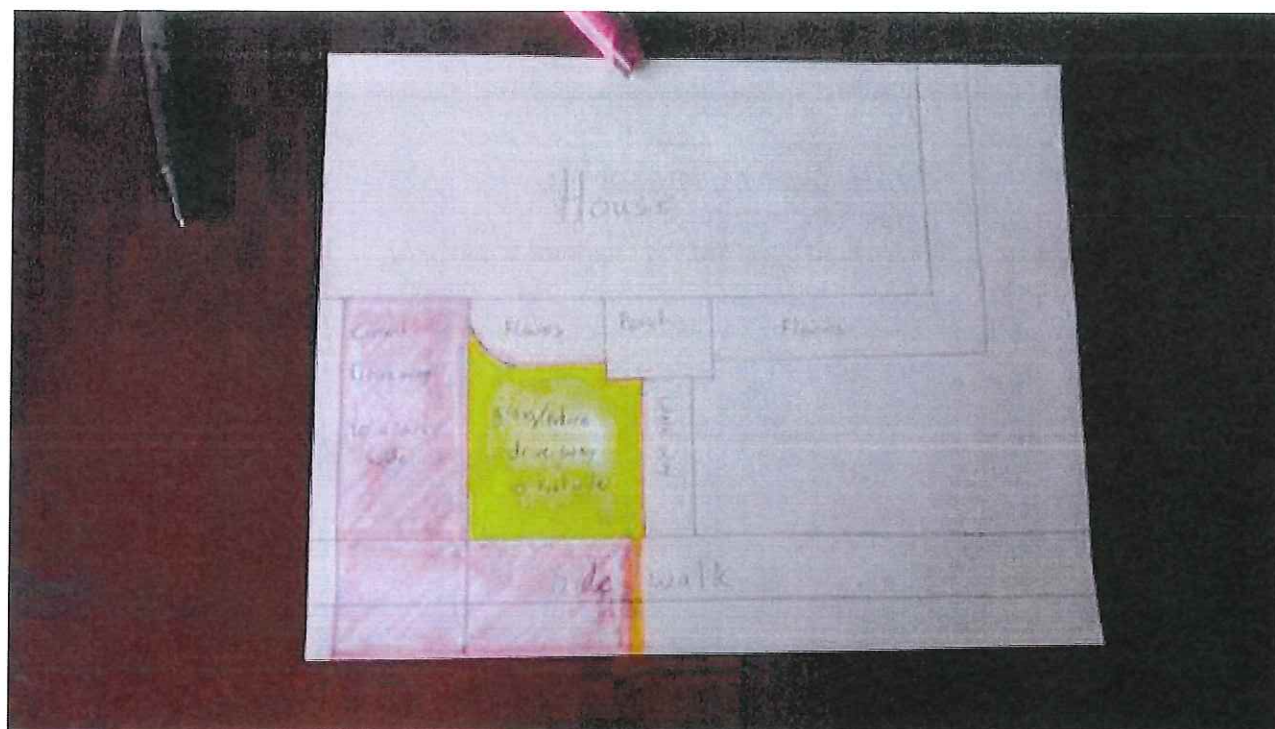
Begin forwarded message:

**From:** "Brad Engel" <[computerwizz4545@gmail.com](mailto:computerwizz4545@gmail.com)>  
**To:** "Kurt Craanen" <[Kurt.Craanen@Appleton.org](mailto:Kurt.Craanen@Appleton.org)>  
**Subject:** Brad Engel 1813 N Charlotte st Driveway

Hello, Kurt attached I have a picture of my house along with a picture I drew showing how far I would like my driveway to go. Essentially I am wanting my driveway to meet up with the walkway that leads to the front door of the house. Currently the yellow area is the grassy area inbetween the driveway and the walkway to the front door I would like to remove that grass and extend the driveway to the walk way which is about 10 feet. This would make my driveway about 20 feet wide and it is currently about 10 feet wide. We have 3 vehicles and it is a problem because there simply is not enough room to park. I would be leaving the flowers and landscaping that is located on both sides of the front porch. The current driveway and grass area would be taken out and a new driveway would be put in. The driveway would go up to the edge of the walk way marked by the tape measure in the picture. The walkway is still in excellent shape and would be left alone. The grass to the left of the current driveway would also be left alone as well. Please email me back or call me at 920-750-3996 if you have any questions or need any other pictures.









*"...meeting community needs...enhancing quality of life."*

---

Effective Date:

## **CITY OF APPLETON DOWNTOWN BUSINESS ACCESS ASSISTANCE POLICY**

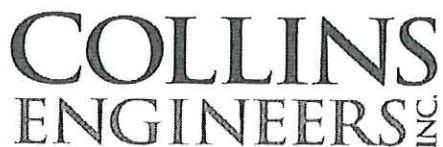
The objective of this policy is to establish the guidelines in which Access Assistance Devices may be placed in downtown Appleton.

### GUIDELINES

1. Devices require a Street Occupancy Permit through the Department of Public Works
2. Devices must be placed as close to the business entrance as practicable
3. Devices must be brought inside by the close of business each day
4. No advertising or other such signage may be attached to the Device

### ENFORCEMENT

This Policy will be enforced by City staff. Any businesses not following the guidelines established above may lose the right for said device to be placed within the street right-of-way.



September 7, 2016

Mr. Chad M. Weyenberg, P.E.  
City of Appleton Department of Public Works  
100 North Appleton Street  
Appleton, WI 54911

**Moveable Bridge Inspections in the City of Appleton (Unit BB-16)  
Amendment No. 1**

Dear Mr. Weyenberg:

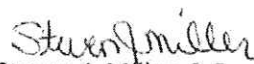
In accordance with our previous discussions, please find attached Collins Engineers cost estimate to provide additional design services for the Olde Oneida Street Bridge. These design services include the preparation of plans, specifications and estimate for the south end trunnion foundation repairs and for the design of drainage protection for the bascule girders at the south abutment. Plans, specifications and estimate will be completed by 12/31/2016 and included with the previously agreed upon Trench Drain Repair project at the bridge.

Collins Engineers estimate to provide the above noted services is a lump sum of \$7,653.00. A detailed estimate is attached to this letter.

If you should any questions regarding this submittal, please do not hesitate to contact me at (920) -434-9857/smiller@collinsengr.com. Our team looks forward to continue working with the City of Appleton on this project.

Very truly yours,

**COLLINS ENGINEERS, INC.**

  
Steven J. Miller, P.E.

Regional Manager

CC: File

Attachments:



# Consultant Contract Total Fee Computation

## Amendment No. 1 to Unit BB-16

Olde Oneida Street Bridge  
City of Appleton, WI  
Bridge Repair Designs

Project ID	N/A	Total for Contract
Number of Staff Hours	62	62
Total Labor	\$7,620.00	\$7,620.00
Direct Expenses	\$33.00	\$33.00
Total	\$7,653.00	\$7,653.00

- 1) Amendment No. 1 to Unit BB-16
- 2) Schedule : Plans, Specs & Estimate to be complete by 12/31/2016
- 3) Technical specs and plans shall be included with the Olde Oneida Street Bascule Bridge Trench Drain Project
- 4) All work to be completed by Collins Engineers, Inc.

# **Summary of Staff Hours and Direct Labor Costs**

## **Amendment No. 1 to Unit BB-16**

**Olde Oneida Street Bridge**

**City of Appleton, WI**

**Bridge Repair Designs**

Classification		Sr. Engr. (QA/QC)		Sr. Engr. (PM)		Engineer (Designer)		Junior Engineer (CAD)		Total Direct Labor	
Avg. Hourly Wage		E6		E5		E3		E1			
Task	Activity Code	Hours	Dollars	Hours	Dollars	Hours	Dollars	Hours	Dollars	Hours	Dollars
Admin/Project Management		0	\$0.00	2	\$430.00	0	\$0.00	0	\$0.00	2	\$430.00
QA/QC		4	\$860.00	0	\$0.00	0	\$0.00	0	\$0.00	4	\$860.00
Bridge Site Field Visit		0	\$0.00	2	\$430.00	0	\$0.00	0	\$0.00	2	\$430.00
Trunnion Foundation Analysis		0	\$0.00	0	\$0.00	4	\$480.00	0	\$0.00	4	\$480.00
Trunnion Foundation Detailing		0	\$0.00	1	\$215.00	4	\$480.00	24	\$2,160.00	29	\$2,855.00
Girder Drainage Protection		0	\$0.00	1	\$215.00	2	\$240.00	8	\$720.00	11	\$1,175.00
Specifications & Estimate		0	\$0.00	2	\$430.00	8	\$960.00	0	\$0.00	10	\$1,390.00
										0	\$0.00
<b>TOTAL:</b>		4	\$860.00	8	\$1,720.00	18	\$2,160.00			62	\$7,620.00

**Direct Expenses by Item**  
**Amendment No. 1 to Unit BB-16**  
**Olde Oneida Street Bridge**  
**City of Appleton, WI**  
**Bridge Repair Designs**

Item	Unit Amount	Unit Type	Rate	Total Expenses
Mileage (Personal Vehicle)	60	miles	\$0.550	\$33.00
				\$0.00
				\$0.00
<b>TOTAL</b>				<b>\$33.00</b>

Optional Equipment

<b>SHEET TOTAL</b>	<b>\$33.00</b>
--------------------	----------------

**To:** Municipal Services Committee  
**From:** Eric S. Lom, City Traffic Engineer  
**Date:** September 7, 2016  
**Re:** No Parking zone on Harrison Street, east of Oneida Street

The Traffic Section recently received a number of complaints regarding the parking situation on Harrison Street, just east of Oneida Street.

Since no on-street parking restrictions were present on this section Harrison Street, drivers were routinely parking on both sides of the street, very close to Oneida Street. This was causing issues with drivers making turns from Oneida Street. Additionally, it was causing problems with semis being able to safely exit the adjacent convenience store.

Upon review, we determined that removal of a small amount of on-street parking in the area just east of Oneida Street would improve intersection safety. As such, we installed the necessary signage for a trial period. This arrangement appears to have had the desired effect, and we have not received any feedback from the community.

Based on this, we recommend the changes be made permanent.



**To accomplish this, the following ordinance action is required:**

1. **Create:** “Parking be prohibited on Harrison Street from Oneida Street to a point 60 feet east of Harrison Street.”





DEPARTMENT OF PUBLIC WORKS  
Engineering Division – Traffic Section  
2625 E. Glendale Avenue  
Appleton, WI 54911  
TEL (920) 832-5580  
FAX (920) 832-5570

**To:** Municipal Services Committee  
**From:** Eric S. Lom, City Traffic Engineer  
**Date:** August 30, 2016  
**Re:** Traffic-related ordinance changes for the John Street Reconstruction Project  
(Banta Court to Matthias Street)

The John Street reconstruction project (Banta Court to Matthias Street) was completed during the 2016 construction season. This memo addresses the parking and traffic restrictions that are necessary to implement the Council-approved roadway plans.

**The following ordinance action is required:**

1. **Create:** "Remove Stop Signs at the intersection of John Street and South River Street."
2. **Create:** "Stopping/standing/parking be prohibited on John Street from Banta Court to South River Street."
3. **Create:** "Stopping/standing/parking be prohibited on the north side of South River Street from John Street to a point 55 feet west of Kernan Avenue."
4. **Create:** "Stopping/standing/parking be prohibited on the south side of South River Street from John Street to Kernan Avenue."
5. **Create:** "Stopping/standing/parking be prohibited on the south side of John Street from South River Street to a point 240 feet northwest of Walden Avenue as measured along the centerline of John Street."
6. **Create:** "No Parking/Passenger Loading Zone (driver must remain at wheel/pull forward when possible) 7:30 a.m. to 4:30 p.m. on school days on the south side of John Street from a point 240 feet northwest of Walden Avenue to a point 130 feet northwest of Walden Avenue, as measured along the centerline of John Street."
7. **Create:** "Ten-Minute Parking Zone be designated on the south side of John Street from a point 130 feet northwest of Walden Avenue to a point 75 feet northwest of Walden Avenue, as measured along the centerline of John Street."
8. **Create:** "Stopping/standing/parking be prohibited on the south side of John Street from Walden Avenue to a point 75 feet northwest of Walden Avenue, as measured along the centerline of John Street."
9. **Create:** "Stopping/standing/parking be prohibited on the north side of John Street from South River Street to Walden Avenue."
10. **Create:** "Stopping/standing/parking be prohibited on John Street from Walden Avenue to Telulah Avenue."
11. **Create:** "Parking be prohibited on the west side of Telulah Avenue from John Street to a point 150 feet north of John Street."
12. **Create:** "Parking be prohibited on Telulah Avenue from John Street to Marion Street."
13. **Create:** "Parking be prohibited of the east side of Telulah Avenue from Marion Street to a point 35 feet south of Marion Street."
14. **Create:** "Parking be prohibited of the south side of John Street from Telulah Avenue to a point 270 feet southeast of Telulah Avenue, as measured along the centerline of John Street."
15. **Create:** "Parking be prohibited on the north side of John Street from Telulah Avenue to Emmers Drive."
16. **Create:** "Parking be prohibited on the south side of John Street from Weimar Street to Arlington Drive."
17. **Create:** "Parking be prohibited of the south side of John Street from Emmers Drive to a point 225 feet northwest of Emmers Drive, as measured along the centerline of John Street."
18. **Create:** "Parking be prohibited on John Street from Emmers Drive to Matthias Street."

# Department of Public Works Inspections Division

## Permit Summary Count YTD Comparison

01/01/16 Thru 08/31/16

Report Date: 9/1/2016



Permit Type	Year Issued	Permit Count	Total Estimated Cost	Total Receipt Amount
BUILDING	2015	704	114,839,877	257,108.55
	2016	680	52,663,605	239,845.75
		-3.41 %	-54.14 %	-6.71 %
DISPLAY SIGN	2015	92	592,532	2,820.00
	2016	133	995,728	4,000.00
		44.57 %	68.05 %	41.84 %
ELECTRICAL	2015	640	7,440,732	86,896.53
	2016	659	9,800,143	101,385.71
		2.97 %	31.71 %	16.67 %
EROSION CNTL	2015	34		4,650.01
	2016	32		3,910.00
		-5.88 %	%	-15.91 %
HEATING	2015	485	11,877,577	44,328.92
	2016	488	9,651,420	41,920.04
		0.62 %	-18.74 %	-5.43 %
PLAN REVIEW	2015	85		37,780.00
	2016	80		25,692.50
		-5.88 %	%	-31.99 %
PLUMBING	2015	359	5,015,766	41,407.00
	2016	323	3,092,276	23,866.00
		-10.03 %	-38.35 %	-42.36 %
SEWER	2015	133	1,471,969	11,620.00
	2016	130	1,190,575	11,260.00
		-2.26 %	-19.12 %	-3.10 %
WELL	2015	2		60.00
	2016	1		30.00
		-50.00 %	%	-50.00 %



# Department of Public Works Inspections Division

## Permit Summary Count YTD Comparison

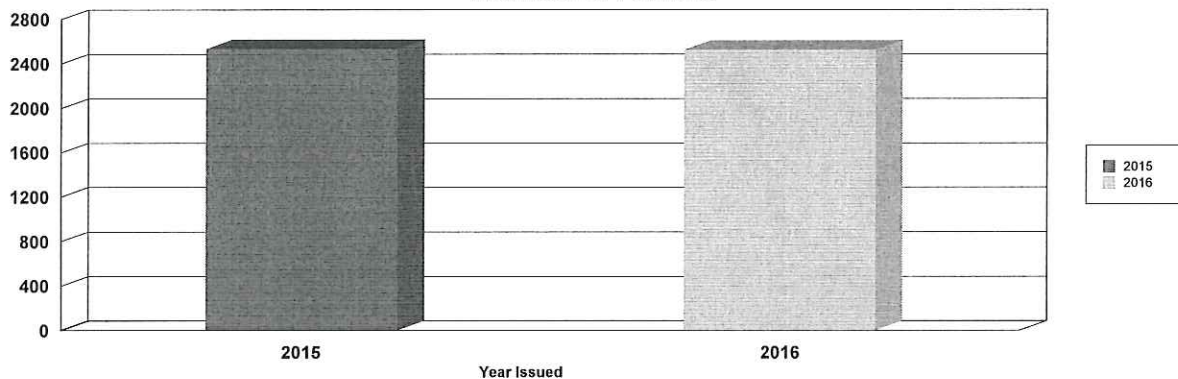
01/01/16 Thru 08/31/16

Report Date: 9/1/2016

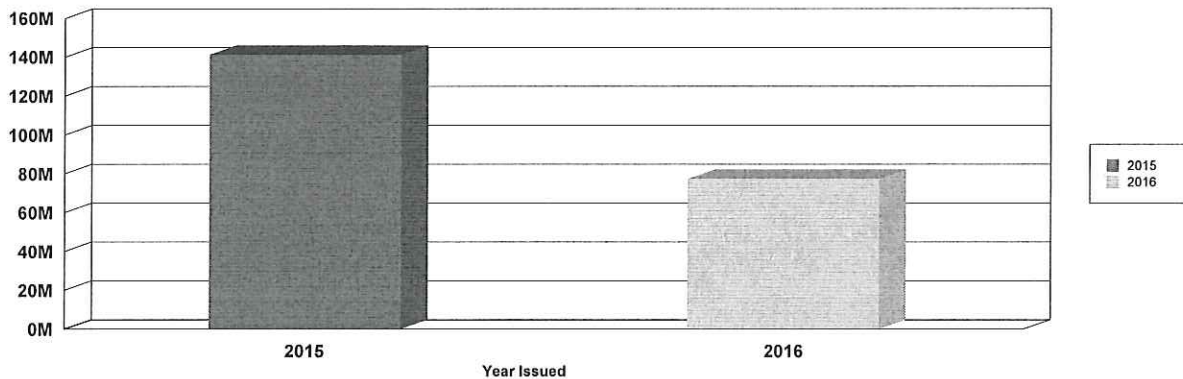


	2015	2016
<b>Permits</b>	<b>2534</b>	<b>2526</b>
<b>Estimated Cost</b>	<b>141,238,453.00</b>	<b>77,393,747.00</b>
<b>Receipt Amount</b>	<b>486,671.01</b>	<b>451,910.00</b>

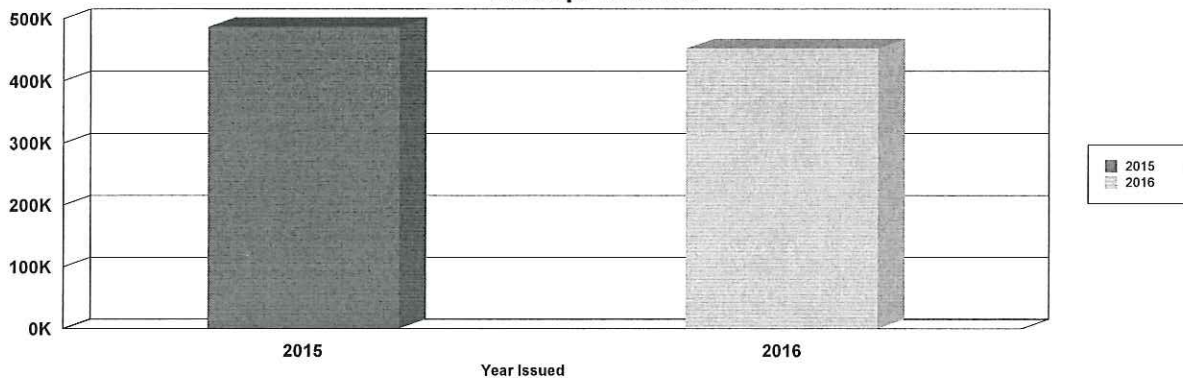
Number of Permits



Estimated Cost



Receipt Amount



## 'Walk Your Wheels' ensures pedestrian safety

Sep 15, 2015



Bicycling is more than just a fun pastime. It is also becoming a favorite mode of transportation. Because of this rise in popularity, Cedar Rapids has been busy constructing more bike lanes and making modifications to roads and trails throughout the city.

Stephen Clark, a bicycle-friendly community specialist for the League of American Bicyclists, [recently toured](#) Cedar Rapids to give his recommendation about what Cedar Rapids can do to raise its bicycle-friendly rating on a national scale.

Cedar Rapids workers installed decals earlier this week; one on the sidewalk near Parlor City in New Bohemia and one in front of the Bike Collective in Czech Village. These decals will serve as a reminder to bicyclists and skateboarders to 'walk their wheels' while using the sidewalks in these areas.

According to CVNB Main Street Executive Director, Jennifer Pruden, with the bike trail so close to the district and a rise in bicycle-themed events, it's easy to forget that not only do we have to share the road, but the sidewalk, as well.

"We appreciate the City of Cedar Rapids for installing the decals," said Pruden. "We recently had a few near misses involving bicyclists and pedestrians, and we just want to keep everyone safe."