



# City of Appleton

100 North Appleton Street  
Appleton, WI 54911-4799  
[www.appleton.org](http://www.appleton.org)

## Meeting Agenda Historic Preservation Commission

---

Tuesday, May 19, 2015

3:00 PM

Council Chambers, 6th Floor

---

1. Call meeting to order
2. Roll call of membership
3. Approval of minutes from previous meeting

[15-801](#) HPC Minutes from 4-21-15

**Attachments:** [HPC Minutes 4-21-15.pdf](#)

### 4. Public Hearings/Apearances

### 5. Action Items

### 6. Information Items

[15-802](#) Discuss planning the State Marker Sign Dedication Ceremony for the Vulcan Street Plant Replica Building

**Attachments:** [Press Release-Invite.pdf](#)

[15-803](#) PowerPoint of Vulcan Street Plant Replica Building

**Attachments:** [The Power of the Fox River with notes.pdf](#)

[15-804](#) Review and discuss updates to the existing brochure "Guide to Local Designated Historic Sites and Buildings in the City of Appleton"

**Attachments:** [HPC Brochure.pdf](#)

[15-805](#) Review and discuss updates to the historic walking tours for Downtown Appleton and the City Park Historic Neighborhood

**Attachments:** [Observing Eye Tour of Downtown Appleton.pdf](#)  
[City Park Historical Walking Tour.pdf](#)

[15-806](#)

## Organizational Matters:

1. Elect Chair
2. Elect Vice-Chair
3. Set Meeting Date and Time
4. Designate a Contact Person

## 7. Adjournment

*Notice is hereby given that a quorum of the Common Council may be present during this meeting, although no Council action will be taken.*

*Any questions about items on this meeting are to be directed to the Community and Economic Development Department at 920-832-6468.*

*Reasonable Accommodations for Persons with Disabilities will be made upon Request and if Feasible.*



# City of Appleton

100 North Appleton Street  
Appleton, WI 54911-4799  
[www.appleton.org](http://www.appleton.org)

## Meeting Minutes - Final Historic Preservation Commission

---

Tuesday, April 21, 2015

3:00 PM

Council Chambers, 6th Floor

---

1. Call meeting to order

**Meeting called to order at 3:00 p.m.**

2. Roll call of membership

*1st Alternate Werth arrived at 3:04 p.m.*

**Present:** 5 - Duba, Peregrine, 1st Alternate Werth, 2nd Alternate Peterson and Alderperson Meltzer

3. Approval of minutes from previous meeting

[15-573](#)

HPC Minutes from 3-17-15

**Attachments:** [HPC Minutes 3-17-15.pdf](#)

**Alderperson Meltzer moved, seconded by 2nd Alternate Peterson, that the Minutes be approved. Roll Call. Motion carried by the following vote:**

**Aye:** 4 - Duba, Peregrine, 2nd Alternate Peterson and Alderperson Meltzer

**Excused:** 1 - 1st Alternate Werth

4. Public Hearings/Apearances

5. Action Items

6. Information Items

[15-574](#)

Discuss planning the State Marker Sign Dedication Ceremony for the Vulcan Street Plat Replica Building

**Attachments:** [Press Release-Invite.pdf](#)

**This Presentation was discussed.**

[15-575](#)

Review and discuss updates to the existing brochure "Guide to Local Designated Historic Sites and Buildings in the City of Appleton"

**This Presentation was discussed.**

[15-576](#)

Review and discuss updates to the historic walking tours for Downtown Appleton and the City Park Historic Neighborhood

**This Presentation was discussed.**

## 7. Adjournment

**Duba moved, seconded by 2nd Alternate Peterson, that the meeting be adjourned at 3:23 p.m. Roll Call. Motion carried by the following vote:**

**Aye:** 4 - Duba, Peregrine, 2nd Alternate Peterson and Alderperson Meltzer

**Abstained:** 1 - 1st Alternate Werth



**\*\*DRAFT PRESS RELEASE\*\***

**“Vulcan Street Plant Replica Building”**

**State Historical Marker Will Be Dedicated In Appleton**

The City of Appleton Historic Preservation Commission will be hosting a public dedication ceremony for a Wisconsin state historical marker commemorating the Vulcan Street Plant Replica Building as perhaps one of the earliest examples of a hydroelectric plant that sold electricity commercially and provided incandescent lighting service to the public. The dedication ceremony is scheduled for Friday, May 29, 2015. The marker will be dedicated at 5:30 p.m. at the Vulcan Street Plant Replica Building located at 530 Vulcan Street in Appleton. The Vulcan Street Plant Replica Building will be open for public viewing starting at 5:00 p.m.

The text follows for the state marker entitled, “Vulcan Street Plant Replica Building”

*On November 25, 1882, the Vulcan Street Hydroelectric Central Station began operation. The Vulcan Street Plant featured a direct-current Edison "K" - type dynamo and lit the homes of A.L. and H.D. Smith, five or six mills, a blast furnace, and other nearby homes with the Edison bulbs. The Vulcan Street Plant represents an early use of hydro-power to generate electricity and perhaps one of the earliest examples of a hydroelectric plant that sold electricity commercially and provided incandescent lighting service to the public. In 1932, to commemorate the 50<sup>th</sup> anniversary of the original plant opening, this replica was constructed by the Wisconsin-Michigan Power Company. Like the original, it houses an Edison “K” dynamo. In 1987, the building was moved here from (now-Olde) South Oneida Street.*

*Erected 2014  
Wisconsin Historical Society  
City of Appleton*

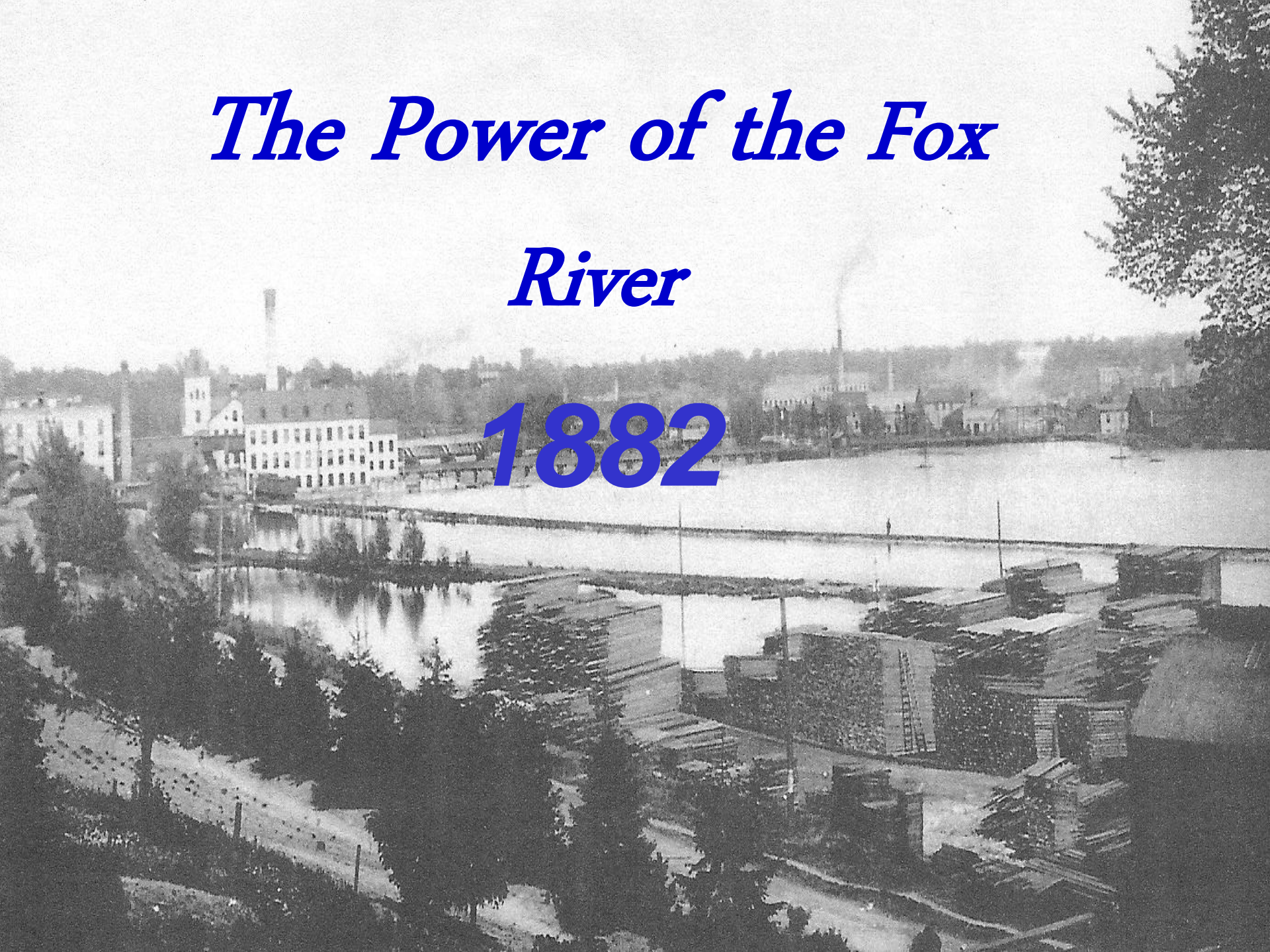
Historical markers commemorate significant Wisconsin individuals, places, sites, and events, and they help communities throughout Wisconsin promote, preserve, and present their history for the education and enjoyment of residents and tourists of all ages.

Funding for this State Historic Marker Sign was obtained from the City of Appleton and federal funds from the National Park Service, U.S. Department of the Interior, and administered by the Wisconsin Historical Society.

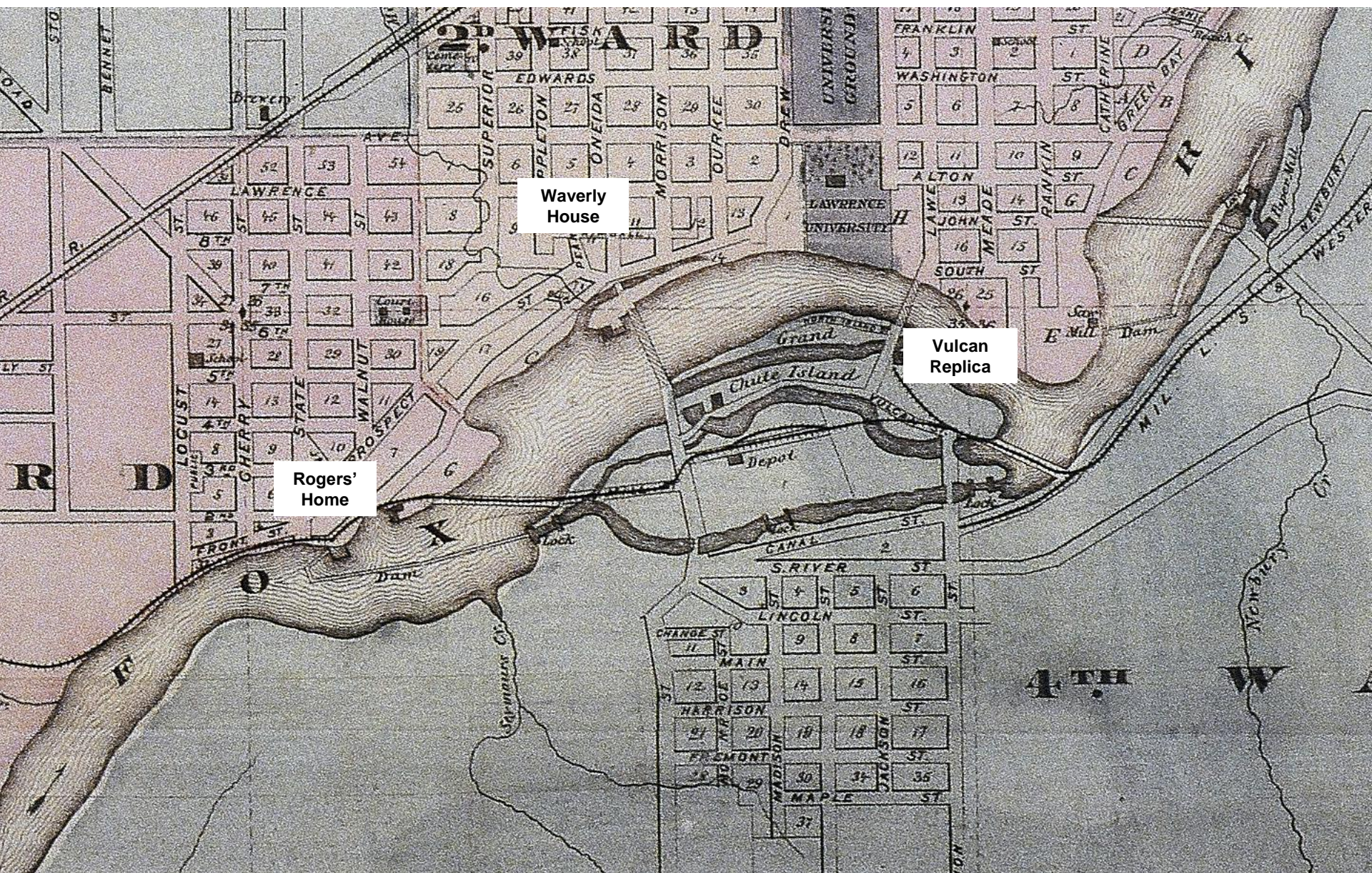
For more information about the dedication ceremony, contact **(name)** at **(### - ####)**.

# *The Power of the Fox River*

**1882**







Map of Appleton approximately 1895

























## VULCAN STREET PLANT REPLICA

On November 25, 1882, the Vulcan Street Hydroelectric Central Station began operation. The Vulcan Street Plant featured a direct-current Edison "K"-type dynamo and lit the homes of A. L. and H. D. Smith, five or six mills, a blast furnace, and other nearby homes with Edison bulbs. The Vulcan Street Plant represents an early use of hydro-power to generate electricity and perhaps one of the earliest examples of a hydroelectric plant that sold electricity commercially and provided incandescent lighting service to the public. In 1932, to commemorate the 50th anniversary of the original plant opening, this replica was constructed by the Wisconsin-Michigan Power Company. Like the original, it houses an Edison "K" dynamo. In 1987, the building was moved here from (now Olde) South Oneida Street.

ERECTED 2014  
WISCONSIN HISTORICAL SOCIETY  
CITY OF APPLETON



NATIONAL HISTORIC ENGINEERING LANDMARK  
VULCAN STREET PLANT

DESIGNATED 1977 BY



AMERICAN SOCIETY OF  
CIVIL ENGINEERS



AMERICAN SOCIETY OF  
MECHANICAL ENGINEERS



INSTITUTE OF ELECTRICAL  
& ELECTRONICS ENGINEERS



NEAR THIS SITE THE  
WORLD'S FIRST  
HYDRO-ELECTRIC CENTRAL  
STATION

WAS ERECTED IN 1882

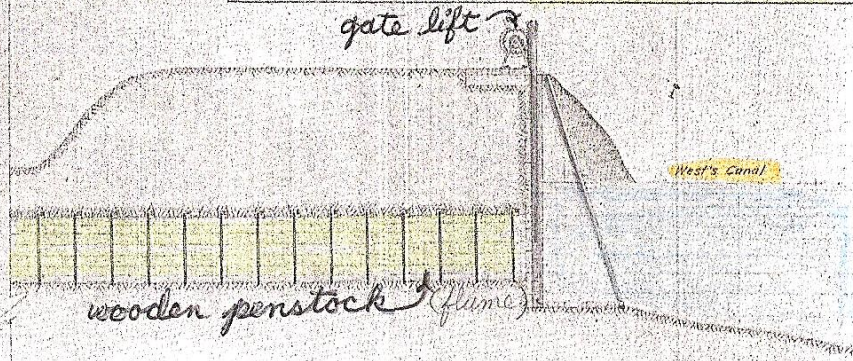
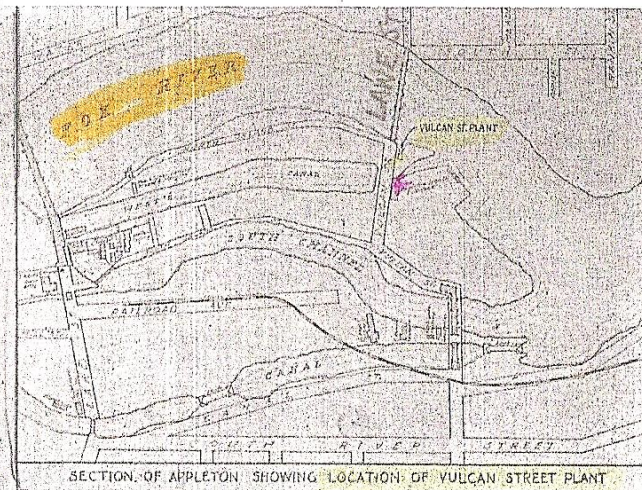
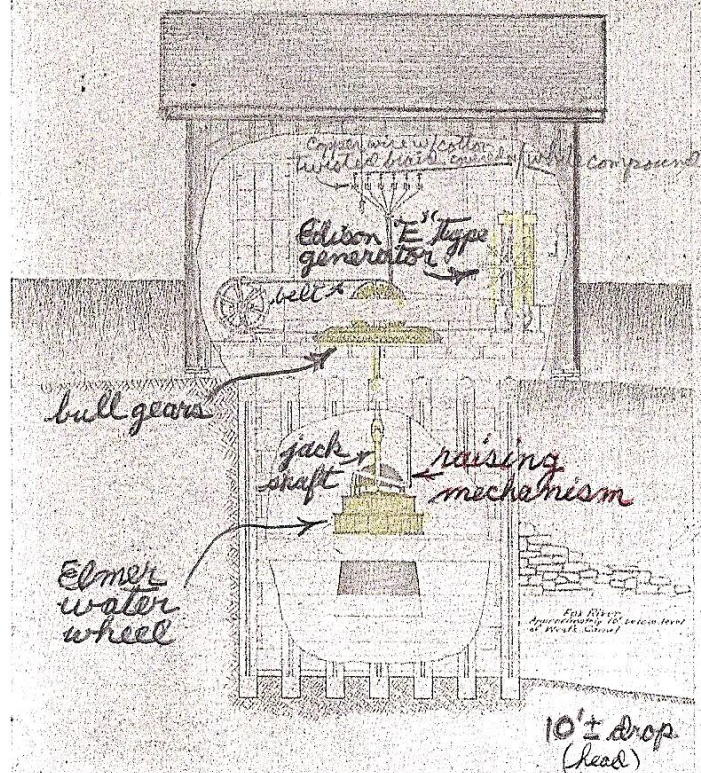
MARKED BY APPLETON CHAPTER  
DAUGHTERS OF THE AMERICAN REVOLUTION  
JUNE 14, 1933





# CROSS SECTIONAL DIAGRAM AND LOCATION MAP OF THE WORLD'S FIRST HYDRO-ELECTRIC CENTRAL STATION

STARTED SEPTEMBER 30, 1882  
APPLETON, WISCONSIN



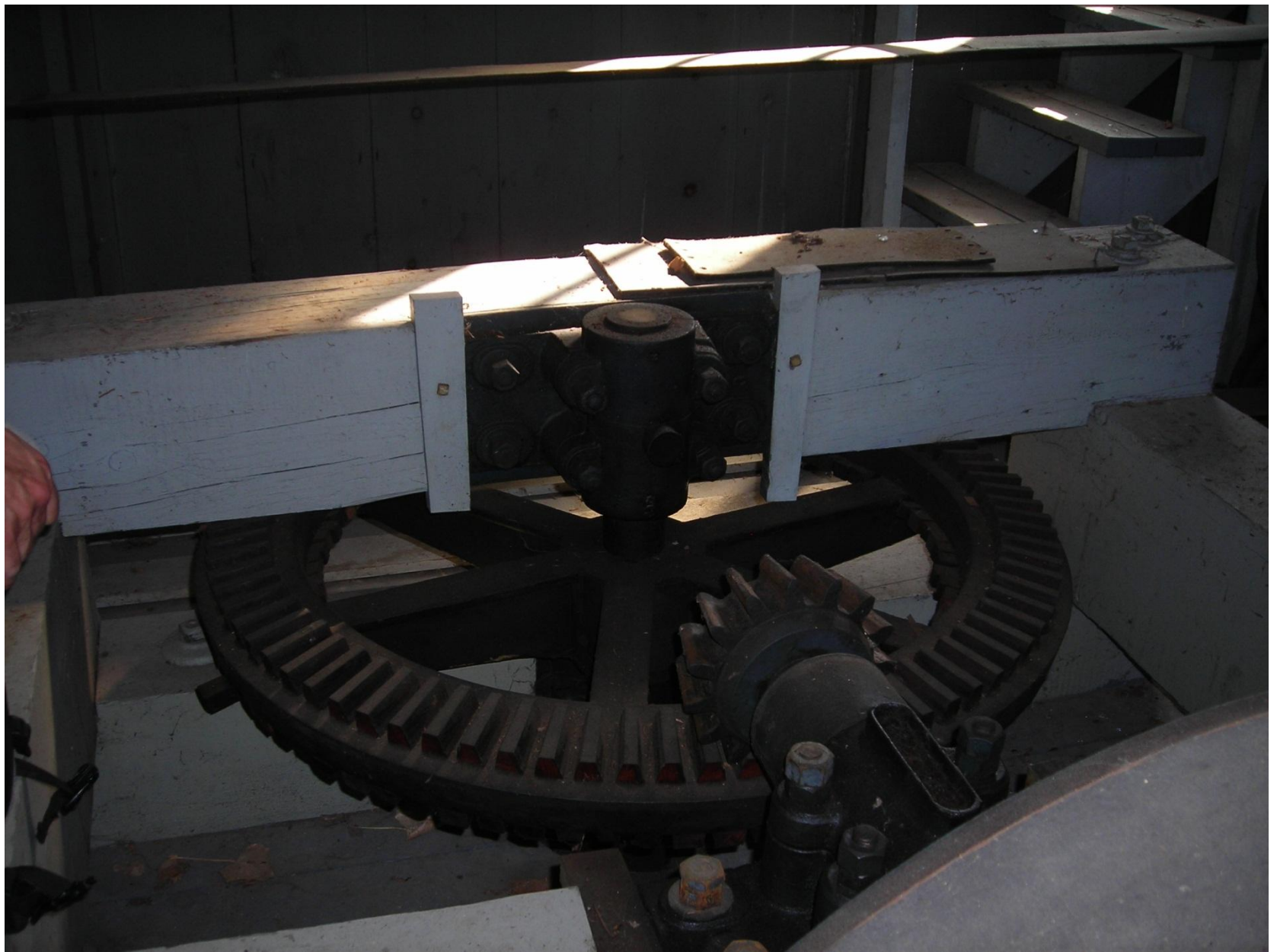
WISCONSIN MICHIGAN POWER COMPANY

SEPTEMBER 30, 1932

NOTE  
Drawn by J. H. Dunham from information obtained from Mr. Ed. O'Hara, the builder of the original Vulcan Street Plant from Mr. Wm. D. Rux, the creator of the original plant, and from various old photographs.  
Attest *[Signature]*  
Date 11-25-32

CUT-AWAY































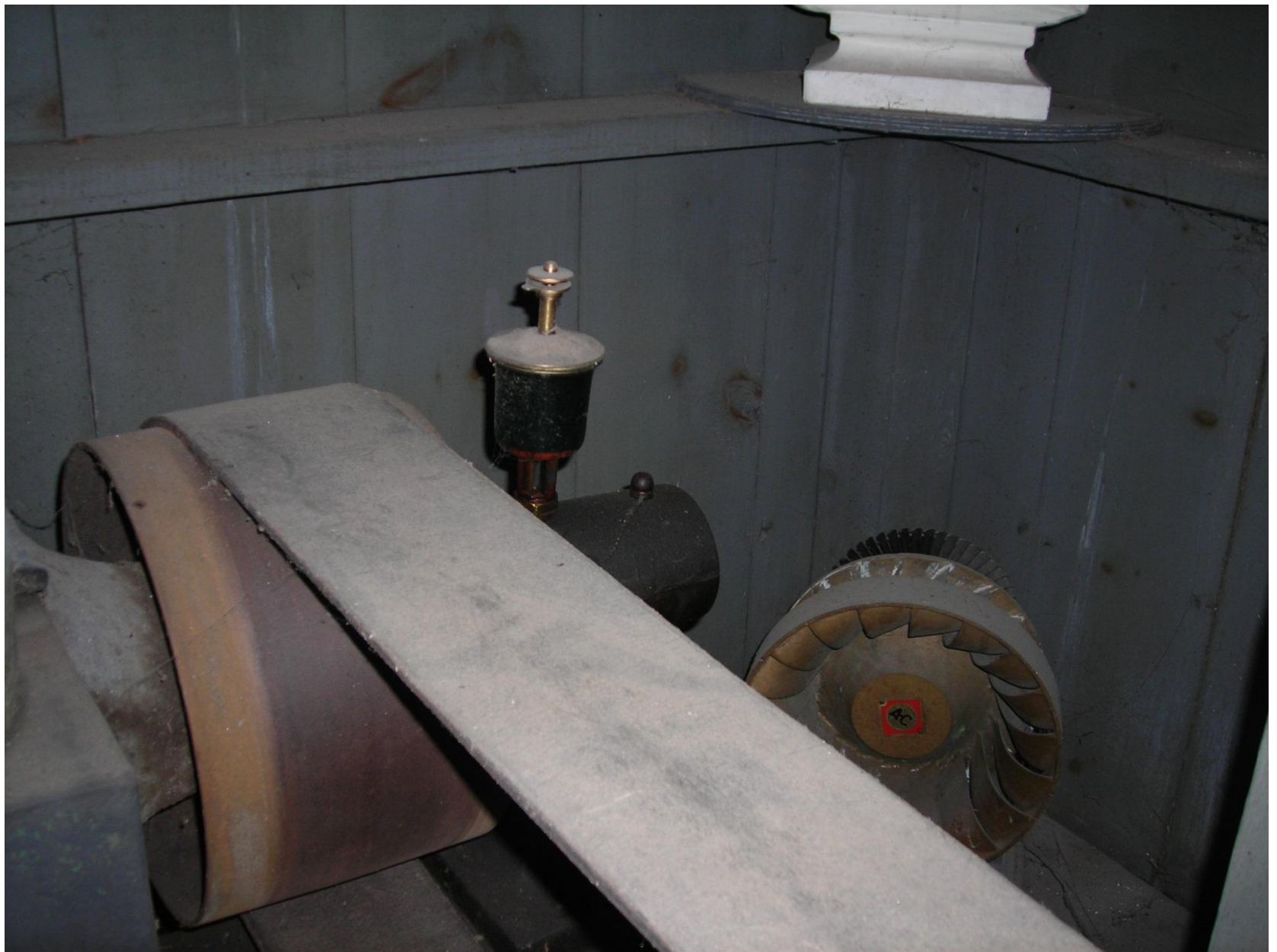










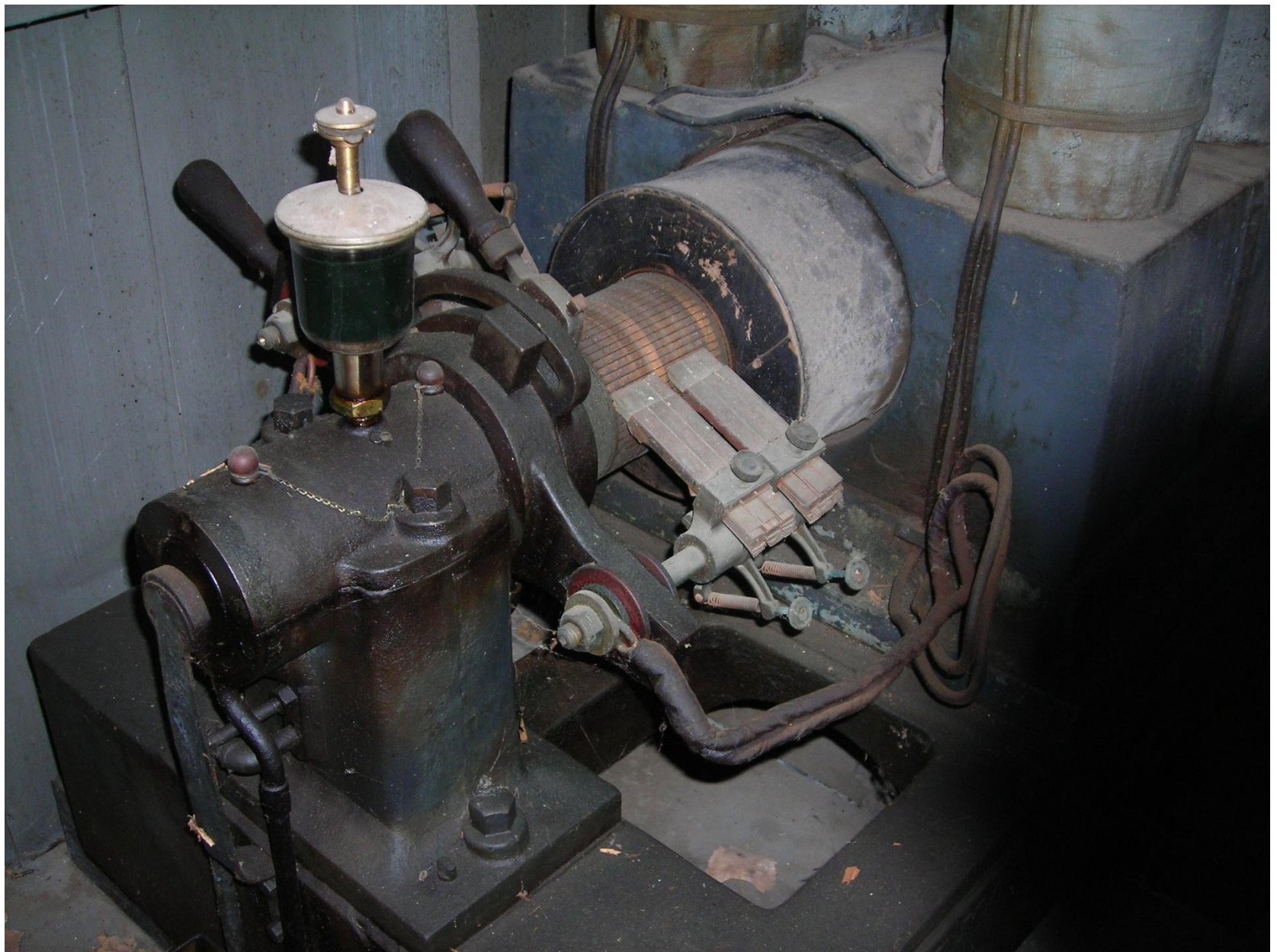


**OILER**



**COMMUTATOR**













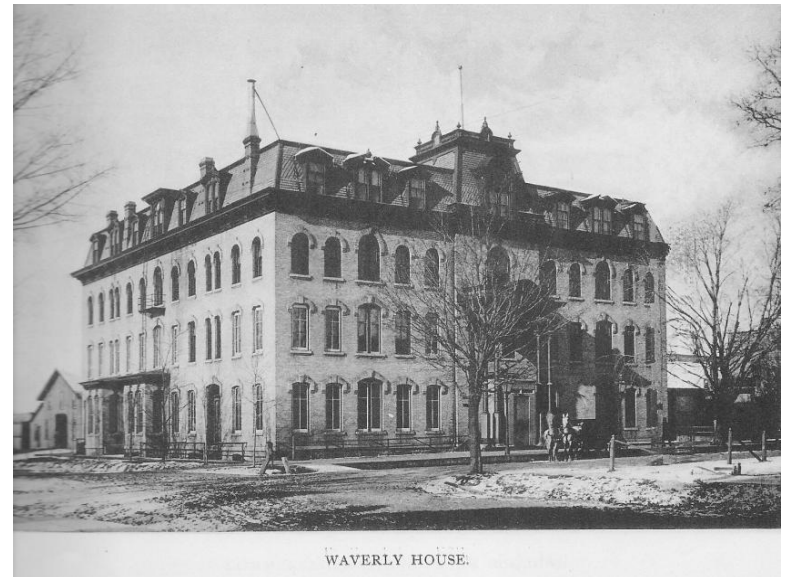


*Photo courtesy of The History Museum at the Castle,  
Appleton, WI P82.84.80.69.*

**2011**  
***H. J. Rogers' Home is now known  
 as Hearthstone and is located on  
 the Southeast corner of  
 Memorial Drive and Prospect Avenue***

***The Waverly House was located on the  
 corner of Appleton and Lawrence  
 Streets. "Convenient to the business  
 center, and just far enough removed to  
 avoid the rattle of business activities."  
 The Waverly was destroyed by fire in  
 1898.***

***2011 – It is the parking ramp for the  
 Radisson.***



WAVERLY HOUSE.



## What is the Historic Preservation Commission?

### *What is the Historic Preservation Commission?*

The Historic Preservation Commission (HPC) has the power to recommend local designation of historic structures, sites and districts within the City of Appleton. HPC members have special interest in, and knowledge of, matters related to the historical, archeological, cultural and architectural elements that reflect the accomplishments and legacy of the earliest settlers in the Fox Valley.

### *What does local designation mean and what are the benefits?*

Designation means the site, structure or district has significant benefit to the historic, architectural and cultural heritage of the city. Benefits include:

- ⌘ Preservation of Appleton's history
- ⌘ Neighborhood stabilization and possible property value improvements
- ⌘ Civic pride in notable past accomplishments

## How do I apply for historic designation?

- ⌘ Promotion of the use of historic structures, sites and districts for educational use and tourism

### *Who can apply for local designation?*

An application will not be accepted without the original signature of the property owner or owner's designated agent.

### *Is there a fee for application?*

There is currently no fee for application.

### *How do I apply for Historic Designation?*

Applications are available online or at the Community Development Dept. office on the 5<sup>th</sup> floor of City Hall. Detailed instructions accompany the application, however contacting the Community Development Dept. to discuss your interest in applying for designation is recommended. Other sources of information for your application are:

## Can I change the appearance of a designated property/site?

- ⌘ HPC members
- ⌘ Appleton Public Library
- ⌘ Appleton Downtown, Inc. (ADI)
- ⌘ History Museum at the Castle
- ⌘ Outagamie, Winnebago and Calumet County Courthouses
- ⌘ State Historic Preservation Office
- ⌘ Lawrence University Library

Applications must have the original signature of the property owner or other authorized representative of the owner.

### *What if an owner wants to reconstruct, alter or demolish a local designated structure or site?*

Approval from the HPC is required for any exterior alteration, construction, reconstruction or demolition of a local designated historic structure or site or any property within a local designated historic district and requires a building permit. Ordinary exterior maintenance and repairs (i.e. painting, refinishing nonstructural elements, or replacing elements with identical pieces) may be performed without HPC approval, provided a building permit is not required.

*If we wish to have a future with greater meaning, we must concern ourselves...with the total heritage of the nation and all that is worth preserving from our past as a living part of the present. –With Heritage So Rich, 1966*

## City of Appleton Historic Preservation Commission

Guide to preserving Appleton's  
heritage and how the  
Commission can help

FOR MORE INFORMATION ABOUT THE  
HISTORIC PRESERVATION  
COMMISSION AND THE DESIGNATION  
PROCESS, CONTACT THE COMMUNITY  
DEVELOPMENT DEPARTMENT

Ph 920.832.6468  
Fx 920.832.5994  
100 N. Appleton Street  
Appleton, WI 54911  
www.appleton.org

## City of Appleton Historic Preservation Commission

Guide to Local Designated  
Historic Sites and Buildings in the  
City of Appleton





# Local Designated Buildings and Sites



Trettin House - 523 Eighth Street

This structure is a two-family home that was constructed in 1918 and is an example of the Prairie style. The house was designed by architect Edward Wettengel Sr. It was designated as a local historic structure in 2005.

1



Henry Schuetter House - 330 Sixth Street

This structure is a single-family home that was constructed in 1890 and is an example of the Queen Anne style. The house was designed by local architect G.A. Tenbusch. It was designated as a local historic structure in 2004.

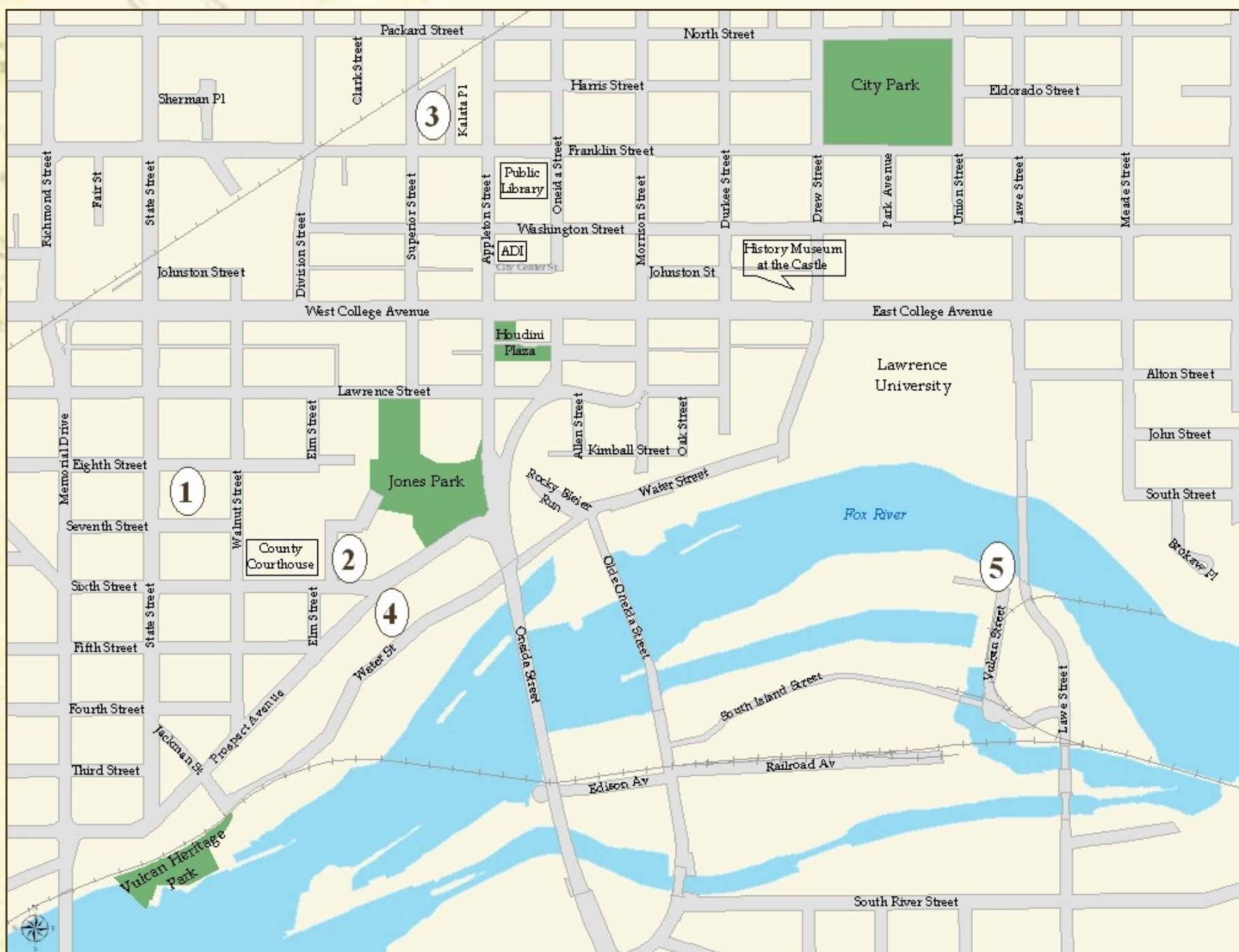
2



Union Springs Park  
Lutz Ice Company Artesian Well Site  
323 Kalata Place

This is the site of the artesian well which supplied water from 500 feet underground to the Lutz Ice Company at a rate of 100 gallons per minute. This park was designated as a local historic site in 1997.

3



John Hart Whorton House  
315 Prospect Avenue

This structure is a single-family home that was constructed in 1870 and is an example of the High Victorian Italianate Villa style. John Hart Whorton was instrumental in the organization of the Fox River Paper Company. The house was designated as a local historic structure in 2000.

4

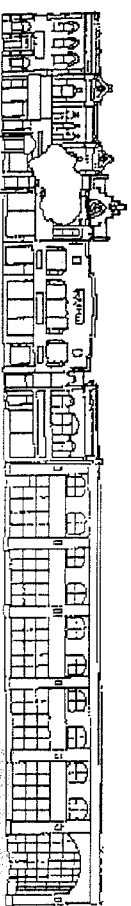


Vulcan Street  
Plant Replica  
530 Vulcan Street

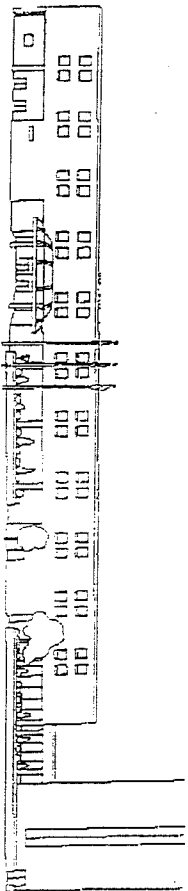
On November 25, 1882, the Vulcan Street Hydroelectric Central Station began operation. The Vulcan Street Plant represents an early use of hydro-power to generate electricity and perhaps one of the earliest examples of a hydroelectric plant that sold electricity commercially and provided incandescent lighting service to the public. The replica was designated as a local historic structure in 2007.

5





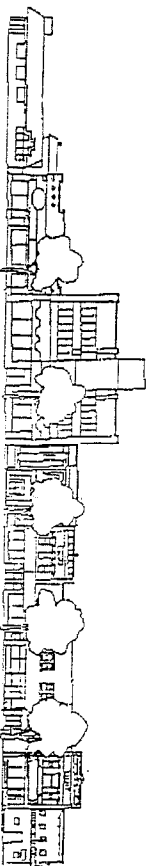
- 201 W. College**  
Built - 1871  
Architect - Williams Waters  
Style - Italianate  
Keystoned windows with window hoods, strong cornice, brick pilasters.  
Site of original 1st National Bank, vault still visible.
- 203 205 W. College**  
Built - 1871  
Architect -  
Style - Victorian Commercial  
Builder - Herman Bissing  
National Register of Historic Places
- 207 W. College**  
Built - 1885  
Architect - Charles Howe  
Style - Flemish Revival with 2nd Empire Mansard Roof  
Builder - Gerhardt Kamps  
National Register of Historic Places  
Original use - Harness shop
- 211 W. College**  
Built - 1930  
Architect - James E. Larson  
Style - Art Deco  
Builder - Albright Construction (renovation)  
Original use - Gibson Auto Exchange, owner Alenor Gibson  
Notable features- original facade including garage door. Black Carrera glass, and use of pineapple - welcome symbol. Historic pictures on display in restaurant.
- 215 W. College**  
Built - 1883  
Architect - William Waters  
Style - Victorian Commercial  
Builder - John Nicholas  
Original use - Farmer's Hotel  
Excellent example of Victorian commercial building. Pronounced cornice with Queen Anne detailing in upper caps. Windowhoods are ornate with decorative flower motif. Original hotel burned down in 1879, but was quickly rebuilt in same year.
- 221 W. College**  
Style - Contemporary  
New construction, very nice elements in it's design. Rhythm of windows with keystone.
- 2nd floor housed Appleton Post.**  
note lion heads high on the facade represent "the roar of truth."
- Notable features keystones with -  
curved flowers and cornice.



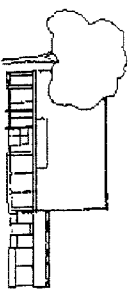
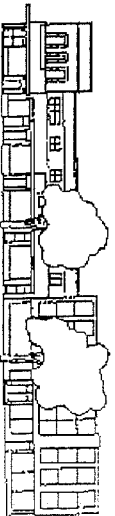
**300 W. College**  
Paper Valley Hotel



- 409 W. College**  
Style - Victorian Commercial  
Upper floors illustrate of cornice with brackets, Gothic peak with elements of Queen Anne style.
- 411 413 W. College**  
Style - Late 1920's commercial building  
Cornice relatively non-descript. Blue Carrera glass, window capstones, rusticated brick and simple decoration.



- 511 W. College**  
Style - Prairie Style  
Uses the diamond motif in cornice and some stone work on either side of columns.
- 513 517 W. College**  
Style - Modern  
Well known years ago for the large clock on middle panel, clock was designed by Tom Dietrich for Wichman Furniture Store.
- 519 W. College**  
Built - 1910  
Style - Neo Classical  
Original use - Outagamie County Bank  
Ionic square columns, blanded front terra cotta decorative work called swags, also fin above window.
- 523 W. College**  
Style - Victorian Commercial  
Stonework above windows all one piece of stone. Cornice has both dentils and brackets and a pediment.
- 531 W. College**  
Style - Victorian Commercial  
Red brick, rusticated capstones, cornice with a pediment, but illustrates an earlier 1940's infill of windows with glass block.

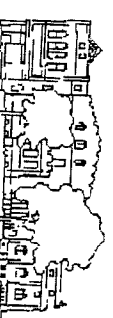
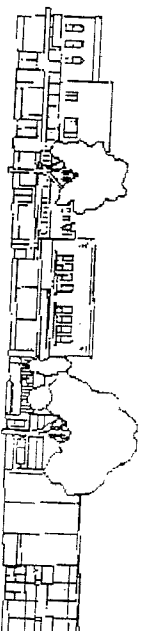


- 601 W. College**  
Style - Modern  
Brick with terra cotta decoration, rosettes near entrance, windows framed in stone.
- 613 W. College**  
Style - Contemporary  
Striking use of wood and glass with pebbled stone. Good illustration of how Hoffer is plying their trade.  
Hoffer was 1st type of home improvement company.
- 623 W. College**  
Style - Modern  
Metal sheath, low show windows. Was a hardware store.
- 603 W. College**  
Style - Modern  
Features are late 1940's with small windows in upper story. Maroon Carrera glass and show windows.

## Observing Eye Tour of DOWNTOWN APPLETON

*When doing the tour it is best  
to stand on the opposite side of the street*

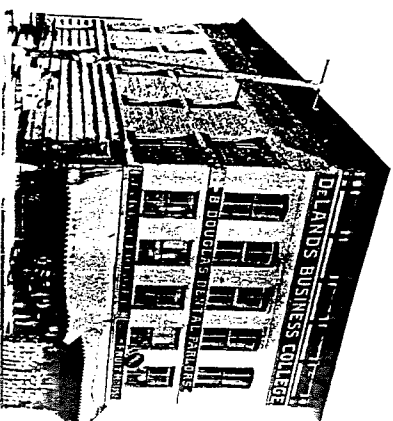
*North side beginning at Drew Street*



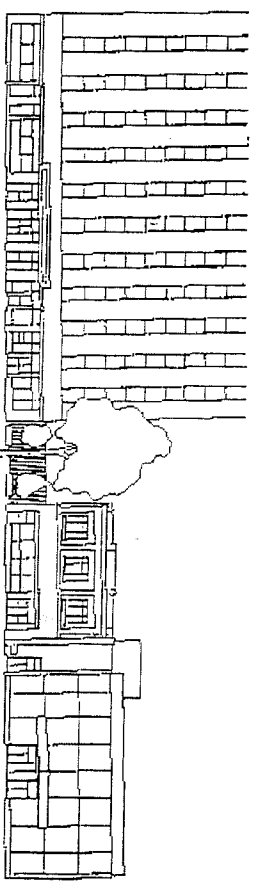
- 330 Outagamie County Historical Society**  
Built - 1923  
Architect - Leenhouts & Guthrie, Milwaukee  
Style - Norman Revival  
National Register of Historic Places  
Original use - Masonic Temple, only building built by the Masonic order in Appleton.  
OCHS moved into the building in 1985. Interesting interior and displays. Tom Dietrich stained glass windows in the Stekman Room. Houdini exhibit in Egyptian Room.



- 200 E. College**  
Built - Original building 1882  
Architect - Charles Howe  
Style -  
Builder - W.S. Werner and H.W. Meyer  
Original use - Housed a German language paper, *Appleton Volkfreund*. (See Appendix)  
W.A. Close - since 1956, fire destroyed building 1981  
Built - 2nd building 1981  
Architect - Zimmerman Design Group  
Style - Contemporary design that includes historic elements, windows, columns and a new cornice to the top of the building, keeps in scale and rhythm with other buildings on this block.
- 222-224-226 Conkey's Bookstore**  
Built - 222 [1859] 224-226 1892  
Architect - 224-226 Phillip Dean  
Style - 222 simple 224-226 Italianate  
Builder - 224-226 Charles Partee (Partee Block)  
Original use - 224-226 grocery store (See Appendix)  
Notable features, 222 Cornice top, mosaic tile entry, 224-226 Cornice, tri-pane windows with transoms, entry.



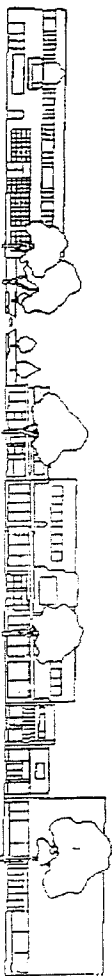
- Burrer King**  
Built - 1857  
Architect -  
Style - Italianate  
Original owner - C.G. Atkins  
Original use - general store  
The first three story building in the city and is one of the oldest buildings in Appleton. The Avenue Mall was built around it.
- Note strong cornice with brackets, simple windows, made from native stone from area. Built with limestone taken from the Fox/or Dale quarry. The use of stone slabs standing on edge along the Oneida Street exterior is another unusual feature.
- Refurbished in 1878 by Lewis Bates for Appleton's first dentist, Dr. Byron Douglas (Douglas was a cousin of the famous orator Stephen A. Douglas). Third floor was used for meetings of early social and religious groups, as headquarters of Deland's Business College in 1872.



- 218-220-222 Aid Association For Lutherans (AAL)**  
Built - 1952, 1st part, 2nd addition dedicated 1966  
Architect - East section, Crain & Ferguson, Boston  
West section, Hoyle, Doran & Berry, Boston  
Style - International  
Builder - East section, Turner Co. New York City  
West section, Oscar Boldt  
Original use - Home office for AAL  
Notable features are the red marble columns (pilasters), under windows. Yellow face brick, terra cotta, Wausau red granite. Metal panels under windows.
- Landmark building - tallest building in Appleton. Ten stories high, and 3rd skyscraper. (1st - Main Hall, 2nd - Zuelke Building).
- 200 Bank One**  
Present Building  
Built - [1963]  
Architect -  
Style - Contemporary  
Interesting thing with this building since it faces south, it incorporates a glass sheet facade and allows for sunlight to be used for solar heat, which makes this a passive solar building.
- Original Building  
Appleton's first theater with a stage was known as Berschey's Hall, located on the second floor of the Berschey Building. Herman Eib bought the building and remodeled it into a real opera house at the cost of \$10,000. The grand opening was held in December, 1882.

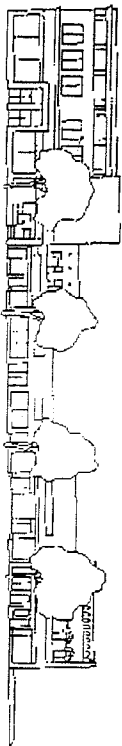
*Street drawings provided by Richard Masters of Appleton  
Appleton Heritage Society prints a monthly newsletter,  
for more information call 414-830-3430*

# South side beginning at Drew Street



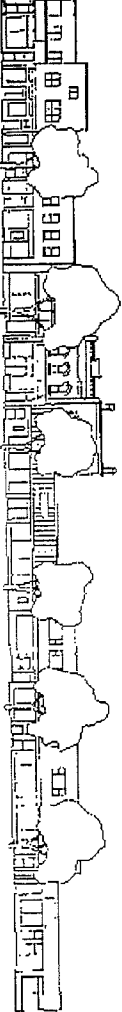
**344 W. College**  
 Built - [1941]  
 Architect -  
 Style - Art Moderne  
 Smooth, rounded corner, giving it a streamlined appearance. Was the Viking Theater for many years. Building has many levels below ground.

**318 W. College**  
 Built - [1949]  
 Architect -  
 Style - Art Moderne  
 Original use - Sears Store  
 Note very streamlined, smooth building. Windows occur in bands. There is a long band right above store front in aluminum. Canopy.



**426 W. College**  
 Built - 1905  
 Architect -  
 Style - Neo-Classical Building  
 Was Glouberman & Gage Department Store

It has some elements that are very descriptive of buildings constructed around 1905-1910, the upper cornice shows some column work and its Neo-Classical in it's tabature (engraved surface) which is the basic banding which runs across the top of the building.

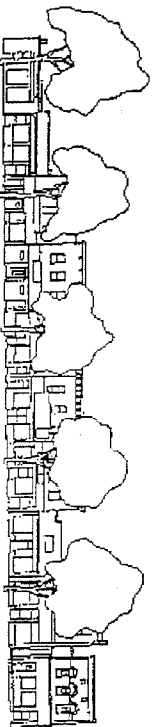


**522 W. College**  
 Built - 1894  
 Architect -

Style - Victorian Commercial  
 Keystone windows with wooden caps, carved with abstract flowers, banding, use of terra cotta that runs through the top of building. Cornice, two square pillars on roof line. Sawtooth band of brickwork below cornice.

**514 Coventry Glassworks**  
 Built -

Architect -  
 Style - Modern  
 Picturesque, white brick, show windows, metal slope overhang. Part of the building is Victorian with keystone windows, carved wooden hoods, cornice, three small windows. Crowns at corners.



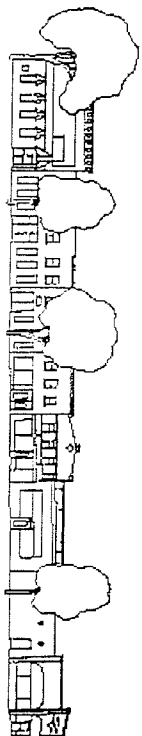
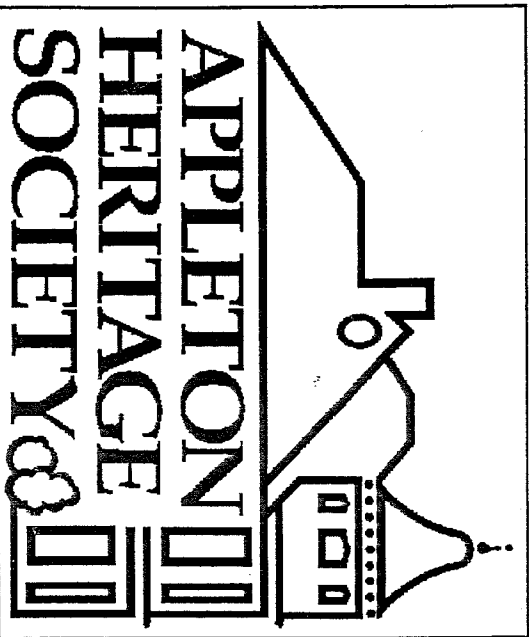
This block is know as the "flat iron" block, lower end of commercial district

**604 W. College**  
 Built - 1880, destroyed by fire rebuilt 1942  
 Architect -

Style - 1940s Commercial Building  
 Represents a good example of 1940s building. windows bring you to the door. Geometric facade. Historical pictures of earlier buildings displayed in store.

**600 W. College**  
 Built -

Architect -  
 Style - Victorian Commercial  
 Utilizes brickwork to the cornice. Cornice on this building is lost. Horizontal sawtooth brickwork between windows.



**303 E. College**  
 Built - 1983  
 Architect -  
 Style - Contemporary  
 Builder - Ross Construction  
 Original use - Pat Ross Women's Apparel.  
 Well designed building that fits in with the scale of other buildings on the block.



**233 E. College**  
 Built - 1885  
 Architect -  
 Style - Second Empire Mansard  
 Builder - Marcus Lyons  
 Original use - cigar factory and store, also a candy manufacturing company. Building was fitted with electricity, gas and had an elevator. Remodeled in 1923 for Langstad, Inc.  
 Upper cornice is made to look like roof, terraza entry. This is just a shell of the original elegant building. A bay window had been in the center of the upper floor, and crowning the top of the existing pediment was a flying pig.

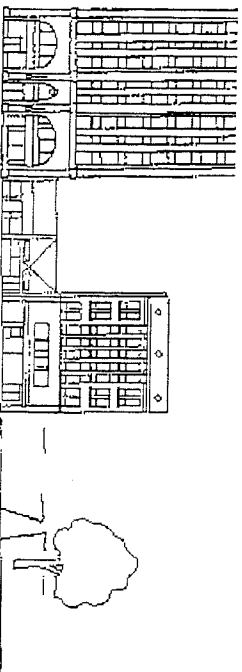


**135 E. College**  
 Style - Contemporary  
 Plaque indicates Edna Ferber's encounter with Harry Houdini.

**129 127 E. College**  
 Built - 1873

Architect - William Walters  
 Style - Gothic Revival  
 Builder - John Worren & William Warner  
 Original use - grocery store  
 Facade is marked with 4 Ws representing original owners. Note keystone windows with transoms, cornice and gables.

**121 E. College**  
 Built - 1871  
 Style - Eclectic  
 Green plastic tiles, unusual round windows on top story.



**119 117 E. College**  
 Built 1874, remodeled 1928  
 Style - Prairie Style  
 Original use - restaurant & saloon  
 Plaque "Houdini's father, Rabbi Samuel Weiss conducted 1st services upstairs in the 1870's."

**107 E. College**  
 Built - 1873

Style - Prairie, remodeled 1918  
 Original use - drug store & billiard parlor  
 1st telephone exchange in 1878, served 25 customers.

**103 E. College**  
 Built - 1882

Architect - Charles Hove  
 Style - Italianate Commercial  
 Builder - George Kriss  
 Strong cornice and gable with polychromatic brick.

**101 E. College**  
 Built - before 1871

Architect - Charles Hove  
 Style - Italianate Commercial  
 Builder - George Kriss  
 Strong cornice and gable with polychromatic brick.  
**Houdini Plaza and Appleton Center**  
 Notable features of this area:  
 Plaque indicating the site of the building where he lived as a child.  
 Meamorphosis sculpture by Appleton artist Dick Wolter.  
 Doug Hemming performed the Meamorphosis "trick" here a year after the dedication of the sculpture.

**103 Zuecke Building**  
 Built - 1850's  
 Rebuilt - 1881  
 3rd building - 1930  
 5 more floors added - 1930  
 Style - Tudor Revival  
 Original use - Insurance Services and Masonic Lodge.  
 2nd building - Commercial Bank and Lodge.  
 Mr. Zuecke was a banker by trade but loved music as seen by the decor throughout the building.

Interior: Marble, bronze elevator doors with open scenes, bronze lanterns, grill work, granite and corinthian pillars. Note the numerous ways I over Z appear throughout the inside on floors 1-5, and outside panels from 7 upward.

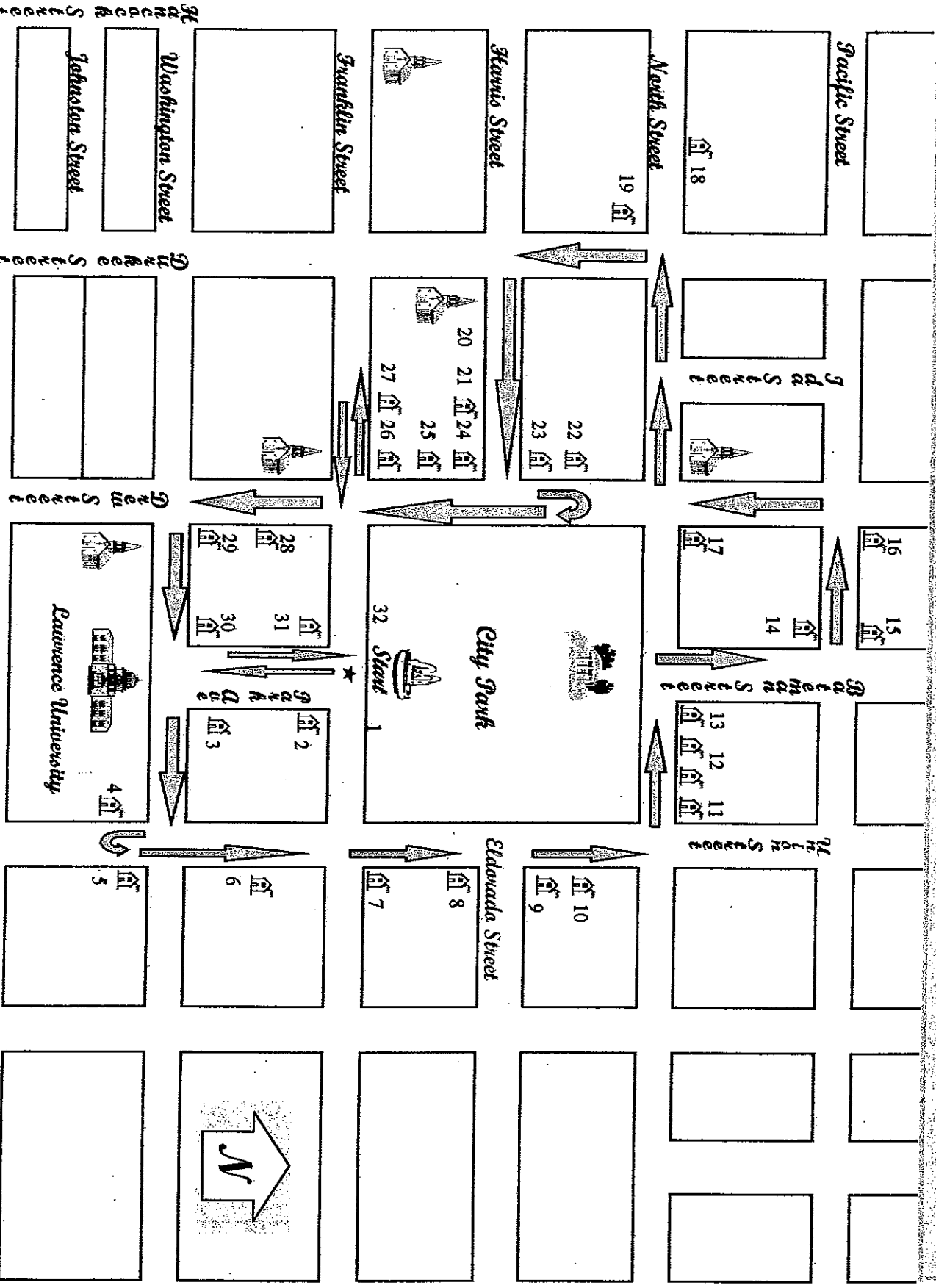
You have to go into the building to appreciate the beauty of it and see the fossils in the marble panel by the Barber Shop.

Aurora: 60 feet long and 10 feet high is a band of glass that subtly and swiftly changes color. It's a spectrum of sun-borne light. This is visible when you approach College Avenue from the south or Skyline Bridge.



# Appleton's City Park Historical Walking Tour

PRESENTED BY:  
HISTORIC CITY PARK NEIGHBORHOOD ASSOCIATION



## *Appleton's City Park Historical Walking Tour*

PRESENTED BY  
HISTORIC CITY PARK NEIGHBORHOOD ASSOCIATION

1. City Park is Appleton's first park. This property was once part of Lawrence University's land holdings. The college sold several acres to Welcome Hyde in 1879 to help meet expenses. Welcome Hyde sold 8 acres of land to the city in 1882 for \$13,000. This 8 acres became what is now known as City Park. In June 1887, a bandstand was constructed in the pavilion style. Here, Saturday night concerts were held. In 1898 two deer were purchased for a modest "zoo" in a rustic enclosure in the northeast corner of the park. The year 1901 marked the construction of a fountain in the center of the park and a "drinking hydrant", (with cup provided!), next to the bandstand.

2. 224 N. Park, Queen Anne style home built by grain dealer Charles Mory, later owned by paper manufacturer H. Marshall

3. 216 N. Park, This Eastlake Style home was built by P.M. Conkey. He founded Conkey's Bookstore in 1896.

4. 127 N. Union, Stick style of the 1890's, home of Thomas Patten of Patten Paper Co.

5. 122 N. Union, On the third floor is the attic where Zoe Cloak offered acting lessons in the 1950's. This led to the founding of Appleton's Attic Theater.

6. 228 N. Union, Built in the Craftsman Style. Formerly the rectory of All Saints Episcopal Church and before that the home of Lawrence University music dean Carl Waterman.

||

7. 304 N. Union, Built in 1908 and designed by Chicago architect H.H. Waterman. Mr. Waterman's design combined the Prairie and Craftsman Styles. He also designed Riverside Chapel, Lawrence University's Brokaw Hall and 229 N. Park Ave. The H.C. Humphrey family lived in this home from 1908 to 1928. Humphrey was the Vice President of G.W. Jones Lumber Company of Appleton. This was also the childhood home of Mayor J. Sutherland. The Sutherland family lived here for approximately 60 years.



8. 320 N. Union, Built in 1905, the home was referred to as the "Wedding House". It was built for Herman and Edna Heckert the year they were married. The Louis Stenger family bought the house in 1925 and lived there for 60 years.

9. 408 N. Union/602 E. Eldorado, Built in the 1890's by the shoe company's Herman Heckert, later the home of jolly butcher Louis Bonini.

10. 414 N. Union, This home started out as a small Victorian house. As newlyweds, Herman G. Saecker and Anna Margaret Engler, daughter of one of the areas pioneer families, purchased the home in 1890 from J.W. Cahoon. In 1907, the Saeckers extensively remodeled and expanded with the help of W.W. Delong and cabinetmaker Jim Sherry. Herman Sacker founded the Appleton Machine Company in 1886 and Scoldy Lox Hair Pin Co. In 1919.

11. 524 E. North St, Built about 1908 in the Eclectic Resurgence Style. This home is affectionately known as the "Castle House" by many and was built by Asa F. Tuttle. Mr. Tuttle had three wives, Eva, Nellie and Rose. His Company, Tuttle Press, was the very first to produce disposable paper napkins.

12. 510 / 516 E. North St., The twin houses were built around the year 1908 for two sisters, Eva Hammel and Anna Kahn, by their father. The husbands of the two sisters ran the Appleton Toy and Furniture Company, which later became part of the Playskool Company in 1945. Local operations were closed down in the 1960's. Before the homes were built, the land was used as a circus ground and as the practice field for the Lawrence University football team. Small toys used as prizes at the circus games are still being dug up in gardens today!

13. 504 E. North, Built in 1899 for Dr. Victor Marshall, a founder of St. Elizabeth's Hospital.

\*\*\*\*\*

*Bateman Street is named after the gentleman who was the Mayor of Appleton during the Civil War. Mr. Bateman had extensive land holdings in the Bateman Street area*

\*\*\*\*\*

14. 425 E. Pacific, Georgian Revival built around 1900, This home is architecturally significant because it is constructed of concrete block. This method began in Wisconsin.
15. 424 E. Pacific, Built about 1860 by Robert McMillen. He was president of Fox River Paper Company of Appleton, but is best known for his contributions to the lumbering business in Oshkosh. Reverend A.J. Mead, a Methodist minister and circuit preacher in N.E. Wisconsin, purchased the house in about 1863. Three generations of the Mead family made their home here.
16. 402 E. Pacific, Gothic Style Queen Anne built in 1885. It was designed by W.W. DeLong. Six look-a-likes were built, including 220 S. Morrison and 318 E. Franklin (Franklin Street Inn). The home was built for Outagamie County's first Municipal judge, Thomas Ryan. Judge Ryan wrote *The History of Outagamie County*.
17. 402 E. North, Richardson Romanesque Style built in the early 1900's. This home was built for the Geenen sisters, Dina, Minnie, and Ana. The three owned and operated Geenen's Department Store, which was located at the present site of Younkers in the Avenue Mall. They ran the store from 1898 to 1960.
18. 216 E. North. Built in 1895. This was the home of Edna Ferber when she wrote the book *Dawn of O'Hara* in 1909. She is one of Appleton's most famous citizens. Ms. Ferber began her career as a reporter for the *Appleton Evening Crescent* and later became a reporter for the *Milwaukee Journal*. She then moved on to become fiction editor of *Everybody's Magazine*. She wrote of her life in Appleton in the autobiography *A Peculiar Treasure*.
19. 417 N. Durkee, Stick Style home built in 1883. This home was originally owned by Mayor David Hammel, who also owned a livery and sale stable. The Hammels were good friends of Edna Ferber's family and she included the Hammels in her autobiography. It is rumored that President Taft visited in 1910 when E.A. Edwards, a Republican Banker, owned the home.
20. 320 N. Durkee, Built in 1883. Temple Zion was the first synagogue building in Appleton. It was planned by Harry Houdini's father, Rabbi Mayer Weiss. Appleton native Edna Ferber was a member of this congregation. Temple Zion and the schoolhouse in the back were entered on the National Register of Historic Place in 1978. The building currently houses Ron Wahl's Organ Workshop.



21. 325 E. Harris, Neo-Colonialized Victorian, built in 1905. This home was built by Dr. Brooks. It has been restored to its current beauty by Robert McKenney and Terry Irwin. Mr. McKenny's family ties in the neighborhood go back to about 1886.

22. 413 N. Drew, Small Farmhouse Type, built in the 1870's. It was the early 1880's home of drayman Leonard Bushey, later the home of music professors Clyde and Miriam Duncan.

23. 405 N. Drew. Built in 1889. This house was built by J.H. Pfenning, an industrialist who owned a mill in the flats. Herman Erb, an early pioneer of Appleton, later owned the home. He was one of the founders of the First National Bank of Appleton. Mr. Erb was the father of Herman Erb Jr., a former mayor of Appleton. Herman Erb Jr. was the youngest man ever elected mayor. He served three one-year terms.

24. 319 N. Drew, This was Edna Ferber's first Appleton home. Her family rented it in 1897.

25. 315 N. Drew. Midwest Type with Federal feel, built about 1860. Has belonged to the family of pioneer lumber dealer Allen E. Davis since the 1860's.

26. 303 N. Drew, Queen Anne Style built in 1900. The home was built on the site of the "Pest House", Appleton's Pioneer Prescott Hospital.

27. 318 E. Franklin, Gothic Style Queen Anne built in 1898. It was built by William R. Rhodes, who had a grocery store on Oneida Street. As previously mentioned, it is one of six look-a-like homes designed by architect W.W. Delong. Currently it a Victorian Bed and Breakfast, (The Franklin Street Inn), owned by Ron and Beth Van Deraa.

28. 224 N. Drew, Home of early Appleton photographer William Ross, later, the Alden B. Johnston home.

29. 402 E. Washington, Late Picturesque Style built in 1883. It was the home of James Wood of Potts-Wood Creamery.

30. 410 E. Washington, Home of druggist William Montgomery, visited by Houdini. It later became the childhood home of ventriloquist Bob Neller.

31. 229 N. Park, Tudor Revival Style built in 1901. The home was built by George W. Jones and included seven working fireplaces and a ballroom. Mr. Jones was involved in real estate and had extensive holdings in the Fox Valley. He was a supporter of the first library in Appleton and gave money to start libraries in almost every town in Outagamie County. He donated land to the city for a park, which now bears his name. He married 3 times, each time to a Sackett sister. From 1947 to 1955 the building was a Lawrence University dorm. From 1956 to the present it has been Lawrence University President's House.

32. City Park Fountain, dedicated August 4, 1996. Nationally known sculptor and Appleton native, Dallas Anderson, created the bronze sculpture in the center of the fountain. He named it Ring Dance. The sculpture depicts a unique but very old game played by children of the Bushman tribes in the Kalahari Desert. To play the game, children link one of their legs with each other to form a circle and then hop in rhythm without arm support as they sing. The six children who modeled for the sculpture were Amy Angha, Laura Curler, Joshua Hanaman, Robert Koehler, Ryan Leath and Emily Pourcian. Anderson also created a sculpture for Neenah's Riverside Park called Playing in the Rain. The sculpture cost \$483,000 and was privately funded. The City Park and Recreation Department coordinated the construction of a new shelter to coincide with the completion of the fountain/sculpture Ring Dance. It is a Victorian-style utility building consisting of a refreshment stand, rest rooms, recreation storage room and porch.

In a way, the sculpture in the fountain depicts what the Historic City Park Neighborhood Association hopes to accomplish. The Ring Dance sculpture depicts an ancient game, which has been passed down through the generations. It connects the past with present and the future. The sculpture helps to pass the game on through the generations and preserves the game and it's history for all to enjoy and appreciate as an object of beauty. The City Park Neighborhood Association hopes to preserve and document the beauty and history of our City Park neighborhood to pass on to future generations.



*The following are the mission statement and goals for the Historic City Park Neighborhood Association.*

### **Mission Statement**

Recognize, preserve and promote Appleton's Historic City Park architecture, sites and history for all of Appleton's future generations to enjoy.

### **Goals**

1. Foster neighborhood and community pride.
2. Encourage and recognize homeowner's efforts to improve and maintain property.
3. Create a neighborhood network for dissemination of information and support protection and enhancement preservation efforts in the City Park neighborhood.
4. Promote projects, activities and education that will further preservation in the City Park neighborhood.
5. Encourage and support community efforts to protect and promote their history for the benefit of its residents.

For more information please write:

Historic City Park Neighborhood Association  
424 East Pacific Street  
Appleton, Wisconsin 54911