



City of Appleton

100 North Appleton Street
Appleton, WI 54911-4799
www.appleton.org

Meeting Agenda Historic Preservation Commission

Tuesday, March 17, 2015

3:00 PM

Council Chambers, 6th Floor

1. Call meeting to order
2. Roll call of membership
3. Approval of minutes from previous meeting

15-430 HPC Minutes from 2-17-15

Attachments: [HPC Minutes 2-17-15.pdf](#)

4. Public Hearings/Apearances

5. Action Items

6. Information Items

15-425 Request to review and comment on the draft Cultural Resources Component of the Appleton (Fox Cities) TMA Long Range Transportation/Land Use Plan - 2050 by Kathy Thunes, P.E. Principal Community Development Planner, East Central Regional Planning Commission

Attachments: [Cultural Resources Component from East Central.pdf](#)

15-426 Discuss planning the State Marker Sign Dedication Ceremony for the Vulcan Street Plat Replica Building

Attachments: [Vulcan Street Plant Dedication To Do.pdf](#)

15-427 Review and determine on the need for redesigning the existing brochure "Guide to Local Designated Historic Sites and Buildings in the City of Appleton"

Attachments: [HPC Brochure.pdf](#)

- 15-428** Review and discuss on the need for developing new historic walking and driving tours

Attachments: [Old Third Ward Walking Tour.pdf](#)
[City Park Historical Walking Tour.pdf](#)
[Observing Eye Tour of Downtown Appleton.pdf](#)

- 15-429** Discuss and determine website layout to promote Historic Preservation
- Include "benefits" of historic preservation links
 - Include links to key local historic preservation organizations
 - Include link to historic structures surveys (or to GIS with that information)
 - Include maps of historic walking tours

7. Adjournment

Notice is hereby given that a quorum of the Common Council may be present during this meeting, although no Council action will be taken.

Any questions about items on this meeting are to be directed to the Community and Economic Development Department at 920-832-6468.

Reasonable Accommodations for Persons with Disabilities will be made upon Request and if Feasible.



City of Appleton

100 North Appleton Street
Appleton, WI 54911-4799
www.appleton.org

Meeting Minutes - Final Historic Preservation Commission

Tuesday, February 17, 2015

3:00 PM

Council Chambers, 6th Floor

1. Call meeting to order

Meeting called to order at 3:08 p.m.

2. Roll call of membership

Present: 3 - Duba, Peregrine and Alderperson Meltzer

Excused: 1 - Meissner

Others : 2 - 1st Alternate Werth and 2nd Alternate Peterson

Others present:

Alderperson Christine Williams, District 10

Stephanie Malaney, Hearthstone Historic House

Chad Doran, Communications Specialist, Mayor's Office

3. Approval of minutes from previous meeting

[15-241](#)

HPC Minutes from 1-20-15

Attachments: [HPC Minutes 1-20-15.pdf](#)

Alderperson Meltzer moved, seconded by Duba, that the Minutes be approved.

Roll Call. Motion carried by the following vote:

Aye: 3 - Duba, Peregrine and Alderperson Meltzer

Excused: 1 - Meissner

Abstained: 2 - 1st Alternate Werth and 2nd Alternate Peterson

4. Public Hearings/Appearances

5. Action Items

6. Information Items

[15-242](#)

Discuss and list methods to promote public participation in local historic preservation educational activities such as the certificate awards program, workshops, or other events to further local historic preservation

This Presentation was discussed.

7. Adjournment

Duba moved, seconded by Alderperson Meltzer, that the meeting be adjourned at 3:53 p.m. Roll Call. Motion carried by the following vote:

Aye: 3 - Duba, Peregrine and Alderperson Meltzer

Excused: 1 - Meissner

Abstained: 2 - 1st Alternate Werth and 2nd Alternate Peterson



*Community and
Economic
Development*

REPORT TO APPLETON HISTORIC PRESERVATION COMMISSION

Historic Preservation Commission Meeting Date: March 17, 2015

Item: Cultural Resources Component: Appleton (Fox Cities) TMA Long Range Transportation/Land Use Plan – 2050. Kathy Thunes, P.E. Principal Community Development Planner, East Central Regional Planning Commission

Staff Representative: Don Harp, Principal Planner

GENERAL INFORMATION

At the request of the East Central Wisconsin Regional Planning Commission, I have attached the following information related to the cultural resources component of the Appleton (Fox Cities) TMA Long Range Transportation/Land Use Plan – 2050 for your review.

Attached are the following:

- relevant portion of Chapter 16 Environmental Mitigation,
- Map 16-7 Overview (this is an orientation map for the 12 maps that were developed for the cultural resources component of the plan)
- Map 16-7 Inset E
- Map 16-7 Appleton Zoom
- Appendix K National Register

Please be prepared to provide your insights and feedback on the materials.

Don Harp

From: Kathy Thunes <KThunes@ecwrpc.org>
Sent: Thursday, February 26, 2015 10:44 AM
To: Don Harp
Cc: Tyler DeBruin; Kolin Erickson
Subject: Appleton Historic Preservation Commission
Attachments: Map_16_7_Appleton_Zoom.pdf; Map_16_7_Inset_E.pdf; Map_16_7_Overview.pdf; Appendix_K_National_Register.docx; Cultural Resources_2_11_15.docx

Don,

As we discussed a few weeks ago, we would like to be included on the March 17th agenda for the Appleton Historic Preservation Commission so that we can obtain feedback on the cultural resources component of the *Appleton (Fox Cities) TMA Long Range Transportation/Land Use Plan – 2050*.

Attached to this email are the following:

- relevant portion of Chapter 16 Environmental Mitigation,
- Map 16-7 Overview (this is an orientation map for the 12 maps that were developed for the cultural resources component of the plan)
- Map 16-7 Inset E
- Map 16-7 Appleton Zoom
- Appendix K National Register

Please provide copies of the attachments to members of the Appleton Historic Preservation Commission. If you need me to bring any copies of the above information to the meeting please let me know.

Please email an agenda for the March 17 meeting and let me know where the Commission meets. I will plan on being there around 3 pm. If you have any questions, please let me know.

Kathy

Kathleen M. Thunes, P.E. – Principal Community Development Planner



400 Ahnaip Street, Suite 100 – Menasha, WI 54952
Phone: 920-751-4770, Ext. 6818 Fax: 920-751-4771
E-mail: kthunes@ecwrpc.org / Website: www.ecwrpc.org

Our Mission is to build relationships and cooperative, visionary growth strategies that keep our region beautiful, healthy, and prosperous.

Cultural Resources

Cultural Resources, like natural resources are valuable assets which should be preserved. These resources define a community's unique character and heritage. Included in this section is an inventory of historic buildings, sites, structures, objects, archeological sites and districts.

State and National Register of Historic Places

The Wisconsin Historical Society's Division of Historical Preservation (DHP) is a clearing house for information related to the state's cultural resources including buildings and archeological sites. The primary responsibility of the DHP is to administer the State and National Register of Historic Places programs. The National Register is the official national list of historic properties in the United States that are worthy of preservation. The program is maintained by the National Park Service in the U.S. Department of Interior. The State Register is Wisconsin's official listing of state properties determined to be significant to Wisconsin's heritage. The inventory is maintained by the DHP. Both listings include sites, buildings, structures, objects, and districts that are significant in national, state, or local history. Sites are chosen based on the architectural, archeological, cultural, or engineering significance.

Within the Appleton (Fox Cities) TMA, the following properties/districts are listed, by community, on the State and/or National Register of Historic Places (**Map 16-7, Insets A-H, Appleton, Kaukauna and Neenah/Menasha**).¹ A complete listing of the properties found in Calumet (10 listings), Outagamie (48 listings) and Winnebago (86 listings) counties are contained within **Appendix K**.

1. City of Appleton, Outagamie County – 18 listings²
2. City of Kaukauna, Outagamie County – 18 listings
3. Village of Little Chute, Outagamie County – 2 listings
4. Village of Kimberly, Outagamie County – 1 listing
5. Town of Buchanan, Outagamie County – 1 listing
6. Town of Center, Outagamie County – 1 listing
7. Town of Greenville, Outagamie County – 2 listings
8. Other areas, Outagamie County – 3 listings³
9. Village/Town of Harrison, Calumet County – 1 listing
10. Other areas, Calumet County – 9 listings⁴
11. City of Menasha, Winnebago County – 11 listings⁵
12. City of Neenah, Winnebago County – 27 listings
13. Town of Clayton, Winnebago County – 1 listing
14. Town of Neenah, Winnebago County – 1 listing
15. Town of Vinland, Winnebago County – 1 listing
16. Other areas, Winnebago County – 44 listings⁶

¹ <http://www.wisconsinhistory.org/hp/register/summary.asp>. Accessed 6/16/14

² Volksfreund Building was removed from the National Register, no explanation given. Lakeshore Depot is eligible for inclusion on the National Register, but is not listed due to owner objections.

³ T. Bovina (1), V. Black Creek (1) and V. Hortonville (1)

⁴ T. Brillion (1), T. Brothertown (1), T. Charlestown (1), T. Stockbridge (3), C. Chilton (2) and C. New Holstein (1)

⁵ Menasha City Hall was torn down and removed from the National Register.

⁶ T. Algoma (0), Bell site not listed on National Register), T. Nekimi (1), T. Omro (1), T. Oshkosh (1), T. Rushford (2), T. Winneconne (3), T. Wolf River (1), C. Omro (3), C. Oshkosh (33; Amos House and Buckstaff Observatory removed from National Register, Chief Oshkosh Brewery not on register)

The National Register is not a static inventory. Properties are constantly being added, and, less frequently, removed. It is, therefore, important to access the most updated version of the National Register properties. This can be found by accessing the DHP website.

Mitigation Issues and System Level Mitigation Measures

While a visual inspection does not suggest any broad system level cumulative environmental impacts to any known properties or historic districts that area listed on the National Register, a few transportation projects do come within close proximity to historic properties. Transportation projects near historic buildings and districts may have to exercise caution so as not to damage these more fragile structures during construction and include:

- Project 14: Broad Street/Tayco – Racine, Reconstruction
- Project 18: Little Chute Canal Bridge, Ped/Bike over Little Chute Lock
- Project 29: Oneida St / Valley Rd – Skyline Bridge, Reconstruction
- Project 44: Lincoln Ave/Wilson – Vandebroek, Extension of Lincoln Ave
- Project 49: Prospect Street / CTH N – Park, Reconstruction
- Project 65: Racine St / Third – Ninth, Reconstruction
- Project 66: Veteran's Lift Bridge, Reconstruction
- Project 78: Nicolet/First – Ninth, Resurface
- Project 82: STH 76/STH 15 - CTH JJ, Recondition
- Project 85: STH 96 / Washington – Clairbel, Reconstruct
- Project 91: Racine St. Bridge, C of Menasha

Locally Significant Historic Places

Locally significant historic places are historic structures, historic sites, or historic districts which have a distinctive historic, architectural or cultural significance to a community. The Certified Local Government (CLG) program was enacted as part of the National Historic Preservation Act Amendments of 1980 and has been established in Wisconsin to further encourage and assist historic preservation by local governments.⁷ In Wisconsin, a city, village, county, or town can be certified by Wisconsin's State Historic Preservation Office and the Department of the Interior as a CLC if it meets basic criteria. Within the Appleton (Fox Cities) TMA, the City of Appleton⁸ and the City of Neenah⁹ are CLG's.

Historic Preservation Commissions are part of local governments and established through local preservation ordinances. A commission's size, responsibilities, and authority depend on local laws and the needs of the community. Within the Appleton (Fox Cities) TMA, the following Historic Preservation Commissions have been established¹⁰: Appleton Historic Preservation Commission, Kaukauna Historic Preservation Commission,¹¹ Menasha Landmarks Commission, and the Neenah Landmarks Commission. A number of these active historic preservation commissions have developed surveys of the architectural and historical resources located in their communities.

⁷ <http://www.wisconsinhistory.org/Content.aspx?dsNav=N:4294963828-4294961311&dsRecordDetails=R:CS94>

⁸ The City of Appleton was certified on May 1, 2006.

⁹ The City of Neenah was certified on October 3, 1986.

¹⁰ Wisconsin Historic Preservation Commissions List, last revised May 2012.

<https://www.wisconsinhistory.org/pdfs/hp/HPR-Commission-List.pdf>

¹¹ May not be active.

Communities also may designate sites that they feel has local significance but are currently not found on the National or State Registry of Historic Places (**Map 16-7, Appleton and Neenah/Menasha Insets**). According to the City of Appleton's website, the following sites are considered either a local historic site or a local historic building:¹²

- Union Spring Park: Lutz Ice Company Ice Company Artesian Well Site, 319 N. Union Place, Appleton;
- Trettin House, 523 W. Eight Street, Appleton; and
- Replica Building First Hydro-Electric Central Station, Vulcan Street, Appleton.

According to the City of Neenah the following sites are considered either a local historic site or a local historic building¹³:

- Edmund J. Lachmann House / S.N. Pickard House, 1010 & 1014 E. Forest Avenue, Neenah
- Kimberly Double House, 404 – 406 E. Wisconsin Avenue, Neenah

The Wisconsin State Historical Society also maintains a list of Local Historical Societies that are affiliated with the Wisconsin Council for Local History.¹⁴ Local affiliates within the Appleton (Fox Cities) TMA include: the Calumet County Historical Society, the Appleton Area Historical Society, the Freedom Area Historical Society, the Kaukauna Area Historical Society, the Little Chute Historical Society, Outagamie County Historical Society, the Menasha Historical Society, the Neenah Historical Society, and the Winnebago County Historical and Archeological Society.

Mitigation Issues and System Level Mitigation Measures

While a visual inspection does not suggest any broad system level cumulative environmental impacts to any known properties, a few transportation projects do come within close proximity to Locally Significant Historic Places. Transportation projects near historic buildings may have to exercise caution so as not to damage these more fragile structures during construction.

Historic places of local significance that are in close proximity to transportation projects include:

- Trettin House, 523 W. Eight Street, Appleton. Project 2: STH 125/USH 41 - STH 47, Resurface
- Edmund J. Lachmann House / S.N. Pickard House, 1010 & 1014 E. Forest Avenue, Neenah. Project 78: Nicolet/First – Ninth, Resurface

Architecture and History Inventory (AHI)

In order to determine those sites that are eligible for inclusion on the National Register, the DHP frequently funds historical, architectural, and archeological surveys of municipalities and counties with the state. Surveys are also conducted in conjunction with other activities such as

¹² http://www.appleton.org/i/d/community_development/NatIStateLocalSites.pdf

¹³ <http://www.ci.neenah.wi.us/community/landmarks-commission/neenah-landmarks.html>

¹⁴ Wisconsin Historical Society – Wisconsin Council for Local History, Local History Affiliate Directory, updated 6/1/2-
14. <http://www.wisconsinhistory.org/pdfs/localhist/WHS-Local-History-Directory.pdf>.

highway construction projects. A search of the DHP's on-line Architecture and History Inventory (AHI) database reveals a number of sites within the Appleton (Fox Cities) TMA:¹⁵

Inclusion in this inventory conveys no special status, restrictions, or benefits to owners of these properties. It simply means that some type of information on these properties exists in the DHP's collections. AHI is primarily used as a research and planning tool. Like the National Register, this is not a static inventory. Properties are constantly being updates. The AHI database is searchable by county, municipality and street; therefore it is recommended that a search of the database be done for each specific project.¹⁶

Mitigation Issues and System Level Mitigation Measures

Do to the large number of properties on the AHI database; a visual search between the database and transportation projects was not completed. However, as noted above inclusion in this inventory conveys no special status, restriction, or benefits to owners of these properties. This tool is to be used primarily as a research and planning tool. It is suggested that this inventory be consulted during the planning and design stage to see if any locally significant properties are present and that local historic preservation organizations be consulted.

Archaeological Sites Inventory (ASI)

An inventory similar to the AHI exists for known archeological sites across the state; the Archaeological Sites Inventory (ASI). Due to the sensitive nature of archaeological sites, information as to their whereabouts is not currently made available on-line. This information is distributed only on a need-to-know basis. Archaeological sites are added to as they are discovered; discovery is a continual process. For technical assistance and up to date information on sites within a given area, contact the State Historic Preservation Office at the Wisconsin Historical Society.

Mitigation Issues and System Level Mitigation Measures

During the planning and design stage, a determination should be made to see if there are any known archaeological sites within the vicinity of the transportation projects. If any known sites are present, the state archeologist will be consulted.

¹⁵ <http://www.wisconsinhistory.org/ahi/summary.asp>. Accessed 3/1/10.

¹⁶ The Architecture and History Inventory can be accessed at <http://www.wisconsinhistory.org/Content.aspx?dsNav=N:1189-4294963829>.

Wisconsin Historical Markers

Wisconsin historical markers identify, commemorate and honor important people, places, and events that have contributed to the state's rich heritage. The Wisconsin Historical Markers Program is a vital education tool, informing people about the most significant aspects of Wisconsin's past. The Society's Division of Historic Preservation administers the Wisconsin Historic Markers Program. Applications are required for all official State of Wisconsin historical markers and plaques. According to the Wisconsin Historical Society, nine historical markers or plaques are located within the Appleton (Fox Cities) TMA (**Map 16-7, Inserts B, D-G, Appleton, Neenah/Menasha and Table 16-7**).¹⁷

Table 16-7: Wisconsin Historical Markers within the Appleton (Fox Cities) TMA

Map Identifier	Municipality	Name	Location
1	C. Appleton	World's First Hydroelectric Central Station	Temporary Relocated
2	C. Appleton	First Electric Street Railway	807 S. Oneida Street
3	T. Greenville	South Greenville Grange No. 225	Highways BB & 76
4	C. Kaukauna	Revolutionary War Veterans	Thelan Park
5	V. Little Chute	Treaty of the Cedars	Highway 96
6	C. Menasha	Wisconsin Central Railroad	Menasha Motel, Main and Mills streets
7	T. Menasha	Butte des Morts – Fritse Park	Little Lake Butte des Morts
8	T. Menasha	Fox-Irish Cemetery	9088 Clayton Avenue
9	C. Neenah	Wisconsin Avenue Commercial Historic District – Interior walkway	135 W. Wisconsin Avenue

Source: <http://www.wisconsinhistory.org/pdfs/hp/HPR-Marker-List.pdf>. Revised 9/16/13

Mitigation Issues and System Level Mitigation Measures

During the planning and design stage, a determination should be made to see if there are any historical markers within the vicinity of the transportation projects. System level analysis identifies the following projects within proximity to historical markers:

- Project 14: Broad Street/Tayco – Racine, Reconstruction
- Project 24: Lawe St / Power Canal Bridge,
- Project 52: Lake Street/Railroad – Butte, Reconstruction
- Project 54: Clayton Ave / East Shady – Fairview, Reconstruction
- Project 92: USH 10 Waupaca – Menasha, NCL - STH 441

Cemeteries

A listing of cemeteries was obtained from ECWRPC 2010 land use¹⁸ and compared against Rootsweb, an online directory. Cemeteries are shown on **Map 16-7, insets A-G and Appleton and Table 16-8**. According to our records, 12 cemeteries are present within the Oshkosh MPO.

Table 16-8: Cemeteries within the Appleton (Fox Cities) TMA

¹⁷ <http://www.wisconsinhistory.org/pdfs/hp/HPR-Marker-List.pdf>. Revised 9/16/13

¹⁸ <http://www.rootsweb.ancestry.com/~wiwinne2/cemeteries.html>. Accessed 9/23/14.

Municipality	Name	Location
T. Vinland	Brooks Cemetery	2988 Brooks Road
C. Appleton	First Congregational Rose Garden Cemetery	24 E. South River Street
T. Freedom	Freedom Township Cemetery (Randerson Cemetery)	Lochbur Lane
T. Grand Chute	Grand Chute Town Cemetery	Evergreen Drive and STH 47
T. Neenah	Greenlawn Memorial Park	1451 Green Valley Road
C. Appleton	Highland Memorial Park	3131 N. Richmond Street
T. Buchanan	Holy Angels Cemetery	W2806 CTH KK
C. Kaukauna	Holy Cross Cemetery	Lawe Street
V. Kimberly	Holy Name Cemetery	S. Railroad Street
T. Greenville	Immanuel Lutheran Cemetery	W7265 School Road
T. Kaukauna	Kelso Cemetery	CTH J
T. Freedom	Lutheran Community Cemetery	N2747 French Road
C. Appleton	Moses Monitfiore Jewish Cemetery	E. Wisconsin Ave., Appleton, next to Zion Cemetery
C. Neenah	Oak Hill Cemetery	1201 Oakridge Road
T. Grand Chute	Outagamie County Health Center Cemetery	Section 20
T. Menasha	Rest Haven Cemetery	North Street
C. Appleton	Riverside Cemetery	714 N Owaissa Street
T. Center	St. Edwards Cemetery	N2926 STH 47
T. Menasha	St. John's Polish Cemetery #1	Valley Road
T. Menasha	St. John's Polish Cemetery #2	Midway Road
V. Little Chute	St. John's Cemetery	Main Street
C. Appleton	St. Joseph's Cemetery	1100 N. Ballard Road
T. Neenah	St. Margaret Mary's Cemetery	1375 North Street
T. Menasha	St. Mary's Cemetery	1200 Racine Road
T. Grand Chute	St. Mary's Cemetery	2121 W Prospect Avenue
T. Greenville	St. Mary's Cemetery	N2385 Municipal Drive
C. Kaukauna	St. Mary's Cemetery	1201 Buchanan Road
T. Kaukauna	St. Patrick's Catholic Cemetery	Section 33, Hwy 41
C. Neenah	St. Patrick's Cemetery	Green Bay Road
V. Combined Locks	St. Paul's Cemetery	Buchanan Road
T. Freedom	St. Peters Lutheran Cemetery	West side of French Rd., just south of County E.
T. Kaukauna	Trinity Cemetery	W1239 STH 96
T. Ellington	Trinity Evangelical Lutheran Cemetery	County O, East of Greenwood Road
C. Kaukauna	Union Cemetery	Ryan Street
T. Greenville	Wanderers Rest Cemetery	School Road
C. Appleton	Zion Cemetery	3320 Crestview Drive

Source: ECWRPC 2010 Land Use, Rootsweb, accessed 2/4/15

Mitigation Issues and System Level Mitigation Measures

Map 16-7, Insets A-G, and Appleton, shows the transportation projects in relation to the cemeteries found within the 2010 land use. Some spot level locations may have projects in

close proximity to cemeteries. These projects may require consideration in the design and construction permitting process. For additional information, consult WisDOT's *Guide to Transportation Archaeology*¹⁹

According to a visual review of the maps, the following the projects that are within proximity of cemeteries:

- Project 3: STH 441, USH 41 - USH 4, Road Maintenance
- Project 7: USH 10, USH 41 - Oneida Street, Reconstruction, expansion
- Project 8: USH 41/Appleton - Green Bay CTH J- Orange Lane, Resurfacing
- Project 9: I-41 Conversion / State Line - Green Bay, SCL Dodge Co - I-43 Signing
- Project 44: Lincoln Ave/Wilson – Vandebroek, Extension of Lincoln Ave
- Project 45: Main Street/Vandebroek intersection, Realignment
- Project 50: Kimberly Trail / CE Trail – Railroad, Bike / Ped Trail
- Project 53: Airport Road/Racine –STH 47, Reconstruction
- Project 73: CTH BB/USH 41 – Bartell, Reconstruction, 4 lane, urban
- Project 81: STH 76 / USH 41 - CTH JJ, Reconstruct
- Project 82: STH 76/STH 15 - CTH JJ, Recondition
- Project 85: STH 96 / Washington – Clairbel, Reconstruct
- Project 87: STH 47, Appleton – Bonduel, CTH JJ - NCL
- Project 88: USH 41 - Hwy Rehab
- Project 89: USH 41 / WIS 15 - CTH J, Road Maintenance
- Project 90: USH 41 / USH 10 - USH 41, Resurface

Museums, Libraries and Other Historic and Cultural Resources

Museums

Museums protect valuable historic resources for community enjoyment. Residents are welcome to learn from the exhibits and amenities they have to offer (**Map 16-7, Insert A-H**). Museums within the Appleton (Fox Cities) TMA include:

Outagamie County:

- **Charles A. Grignon Mansion** or "The Mansion in the Woods" is located at 1313 Augustine Street in Kaukauna. It is owned and operated by the Outagamie County Historical Society (OCHS). Charles A. Grignon built this elegant Mansion at a natural portage point along the Fox in 1837.²⁰
- **Hearthstone Historic House Mansion** is located at 625 W. Prospect Avenue, Appleton. The mansion was built between 1881 and 1882. On September 30, 1882, it became the first residence in the world to be lighted by a centrally located hydroelectric station using the Edison system. The Hydro Adventure Center housed in the mansion offers hands-on experience in operating a model of the earliest central hydroelectric station.²¹
- **History Museum at the Castle** is located at 330 E. College Avenue, Appleton. The mission of the museum is to inspire appreciation for the rich history of the Fox River Valley area communities through the collections, exhibits and education at The History Museum at the Castle. Owned and operated by the Outagamie County Historical

¹⁹ <http://www.dot.state.wi.us/business/engrserv/environment/envareas/cultural/docs/guide-arch.pdf> (11/12/14)

²⁰ <http://www.grignonmansion.org/Home.html>

²¹ <http://www.focol.org/hearthstone/>

Society, The History Museum holds the collections representing the history of the Fox Valley dating back to 1840s.²²

- **International Softball Congress Hall of Fame (ISCHF)** is located at 515 W. Kimberly Avenue in Kimberly, it features fast pitch softball memorabilia and plaques of the ISCHF inductees.
- **Paper Discovery Center** is located at 425 W. Water Street in Appleton; it is home to the Paper Industry International Hall of Fame.²³
- **The Building for Kids Children's Museum** is located at 100 W. College Avenue, Appleton provides, according to their website, exceptional learning opportunities that are innovative, deeply engaging, and long-lasting.²⁴
- **Trout Museum of Art** is located at 111 W. College Avenue Street, Appleton. The museum formally, the Appleton Art Center Art Center, provides exhibitions, educational programming and special events such as the annual Art in the Park artist exhibitor festival, lectures, workshops, family fun days, musical concerts and an annual exhibit for local artists.²⁵

Winnebago County:

- **Barlow Planetarium** is located at 1478 Midway Road in Menasha at the University of Wisconsin Fox Valley;²⁶
- **Bergstrom-Mahler Museum** is located at 165 N. Park Avenue in Neenah. The museum houses a collection of glass paperweights and an exquisite collection of ceramic, Victorian and contemporary art glass;²⁷
- **Doty Cabin in Doty Park** is located at 701 Lincoln St., Neenah;
- **Octagon House** is located at 343 Smith Street in Neenah;²⁸
- **R. Harder Gallery of Gems and Minerals** is located at 24 Jewelers Park in Neenah;
- **Tayco Street Bridge Tower Museum** is located at Tayco & Main Streets in Menasha;
- **Velte History Room** - City Hall, Neenah; and
- **Weis Earth Science Museum** is located at 1478 Midway Road in Menasha at the University of Wisconsin Fox Valley.²⁹

Libraries

All libraries in the Appleton (Fox Cities) TMA are part of a federated library system. Federated library systems are designed to provide expanded library services to more people without making additional large expenditures. Parts of three library systems service the population within the TMA. The Calumet County portion of the TMA is part of the Manitowoc-Calumet Library System.³⁰ This system was jointly formed by Manitowoc and Calumet counties and is comprised of six public libraries: Kiel, Manitowoc, and Two Rivers in Manitowoc County, and Brillion, Chilton, and New Holstein in Calumet County. There are no member libraries found within the TMA. The Winnebago County portion of the TMA is part of

²² <http://www.myhistorymuseum.org>

²³ <http://www.paperdiscoverycenter.org/>

²⁴ <http://www.buildingforkids.org/index.php>

²⁵ <http://www.troutmuseum.org/>

²⁶ <http://www.uwfox.uwc.edu/barlow/>

²⁷ <http://bmmglass.com/>

²⁸ <http://www.focol.org/neenahhistorical/>

²⁹ <http://www.uwfox.uwc.edu/wesm/>

³⁰ <http://www.mclsweb.org/mclsweb/> The Calumet County portion of the City of Appleton is included in the OWLs Library System.

the Winnefox Library System.³¹ This system was jointly formed by Fond du Lac, Green Lake, Marquette, Waushara and Winnebago counties. The system is comprised of 30 public libraries: Brandon, Campbellsport, Fond du Lac, North Fond du Lac, Oakfield, and Ripon in Fond du Lac County; Berlin, Green Lake, Kingston, Markesan and Princeton in Green Lake County; Endeavor, Montello, Neshkoro, Oxford, Packwaukee and Westfield in Marquette County; Coloma, Hancock, Pine River, Plainfield, Poy Sippi, Redgranite, Wautoma and Wild Rose in Waushara County; and Menasha, Neenah, Omro, Oshkosh and Winneconne in Winnebago County. The Outagamie portion of the TMA is part of the OWLS Library System.³² This system was jointly formed by Outagamie and Winnebago counties. The system is made up of 17 public libraries: Appleton, Black Creek, Hortonville, Kaukauna, (Kimberly) James J. Siebers Memorial, (Little Chute) Gerard H. Van Hoof Memorial, (Seymour) Muehl, and Shiocton in Outagamie County and Clintonville, (Fremont) Neuschafer, Iola Village, (Manawa) Sturm Memorial, Marion, New London, Scandinavia, Waupaca Area, and Weyauwega in Waupaca County.

Public libraries within the TMA include:

- **Appleton Public Library** (OWLS Library System), 225 N. Oneida Street, Appleton;
- **Kaukauna Public Library** (OWLS Library System), 111 Main Avenue, Kaukauna;
- **(Kimberly) James J. Siebers Memorial Library** (OWLS Library System), 515 West Kimberly Avenue;
- **(Little Chute) Gerard H. Van Hoof Memorial Library** (OWLS Library System), 625 Grand Avenue, Little Chute;
- **(Menasha) Elisha D. Smith Public Library** (WinneFox Library System), 440 First Street, Menasha; and
- **Neenah Public Library** (WinneFox Library System), 240 East Wisconsin Avenue, Neenah.

Other Historic and Cultural Resources

Besides museums and public libraries, other cultural resources are present in the Appleton TMA. These resources include:

- **Fox Cities Performing Art Center (PAC)**, 400 W. College Avenue, Appleton; and
- **Special Memories Zoo**, W7013 Spring Road, Greenville.³³

Mitigation Issues and System Level Mitigation Measures

During the planning and design stage, a determination should be made to see if there are any Museums, libraries or Other Historic and Cultural Resources within the vicinity of the transportation projects. Transportation projects near historic buildings may have to exercise caution so as not to damage these more fragile structures during construction. System level analysis identifies the following projects within proximity to museums, libraries and other historic and cultural resources:

³¹ <http://www.winnefox.org/> The Winnebago County portion of the City of Appleton is included in the OWLS Library System.

³² <http://owlsnet.org/>

³³ <http://www.specialmemorieszoo.info/Info.html>

- Project 2: STH 125/USH 41 - STH 47, Resurface
- Project 9: I-41 Conversion / State Line - Green Bay, SCL Dodge Co - I-43 Signing
- Project 12: Kimberly Ave/Railroad – Marcella, Reconstruction
- Project 14: Broad Street/Tayco – Racine, Reconstruction
- Project 25: Prospect Ave / Jackman St Overhead
- Project 44: Lincoln Ave/Wilson – Vandenbroek, Extension of Lincoln Ave
- Project 45: Main Street/Vandenbroek intersection, Realignment
- Project 51: Railroad Street/3rd – Maes, Bike/Ped Trail

Appendix K. National Register and State Register of Historic Places

Reference #	County	City/Village/ Township	Location	Historic Name
02001213	Outagamie	Appleton	Roughly bounded by E. Washington St., N. Durkee St., E. Pacific and Lawe streets	Appleton City Park Historic District
93001329	Outagamie	Appleton	Fox River at John St.	Appleton Lock 4 Historic District
93001333	Outagamie	Appleton	Roughly, along the Fox River from Memorial Dr. to Lowe St.	Appleton Locks 1--3 Historic District
82005123	Outagamie	Appleton	600 S. Atlantic St.	Appleton Wire Works
82001848	Outagamie	Appleton	215 W. to 109 E., and 110 W. to 102 E. College Ave.; 106-114n. Oneida St.	College Avenue Historic District
93000650	Outagamie	Appleton	301 E. Water St.	Courtney, J. B., Woolen Mills
90000639	Outagamie	Appleton	405-406, 415 S. Olde Oneida St.	Fox River Paper Company Historic District
74000112	Outagamie	Appleton	625 W. Prospect Ave.	Hearthstone
82005122	Outagamie	Appleton	725 S. Oneida St.	LakeShore Depot ¹
74000113	Outagamie	Appleton	400-500 E. College Ave.	Main Hall, Lawrence University
85002330	Outagamie	Appleton	330 E. College Ave.	Masonic Temple
96000725	Outagamie	Appleton	330 W. 6th St.	Schuetter, Henry House
08000287	Outagamie	Appleton	302 Morrison Street	St. Paul Evangelical Lutheran Church
78000123	Outagamie	Appleton	320 N. Durkee St. and 309 E. Harris St.	Temple Zion and School
86000623	Outagamie	Appleton	523 S. State St.	Tompkins, James, House
74002336	Outagamie	Appleton	200 E. College Ave.	Volksfreund Building ²
84003772	Outagamie	Appleton	818 W. Lorain St.	Washington School
01000900	Outagamie	Appleton	315-340 West Prospect Avenue	West Prospect Avenue Historic District
74000114	Outagamie	Appleton	315 W. Prospect Ave.	Whorton, John Hart, House
86001309	Outagamie	Appleton	912 N. Oneida St.	Zion Lutheran Church
87000989	Outagamie	Black Creek	305 N. Maple St.	Peters, George, House
02000285	Outagamie	Bovina	North junction of STH 187 and the Shioc River	Barteau Bridge
93001326	Outagamie	Buchanan	Fox River at the Outagamie--Brown County line	Rapide Croche Lock and Dam Historic District
11000162	Outagamie	Center	W5562 Center Valley Rd.	Center Valley Grade School
82000691	Outagamie	Greenville	252 Municipal Dr.	Greenville State Bank
88001153	Outagamie	Greenville	246 Municipal Dr.	Kronser, Joseph, Hotel and Saloon
81000053	Outagamie	Hortonville	312 W. Main St.	Hortonville Community Hall
84003752	Outagamie	Kaukauna	104 River Rd.	Black, Merritt, House
84003754	Outagamie	Kaukauna	714 Grignon St.	Brokaw, Norman, House

¹ The property is eligible, but not listed on the National Register due to owner objections.

² Removed from the National Register.

Reference #	County	City/Village/ Township	Location	Historic Name
84003755	Outagamie	Kaukauna	172-176 W. Wisconsin Ave.	Fargo's Furniture Store
84003756	Outagamie	Kaukauna	111 Main Ave.	Free Public Library of Kaukauna
72000064	Outagamie	Kaukauna	Augustine St.	Grignon, Charles A., House
84003758	Outagamie	Kaukauna	309 Desnoyer St.	Holy Cross Church
93001327	Outagamie	Kaukauna	Roughly, along the Fox R. running E past Canal St.	Kaukauna Locks Historic District
84003760	Outagamie	Kaukauna	1018 Sullivan Ave.	Klein Dairy Farmhouse
84003761	Outagamie	Kaukauna	148-152 E. 2nd St.	Kuehn Blacksmith Shop-Hardware Store
84003763	Outagamie	Kaukauna	137-141 E. 2nd St.	Lindauer and Rupert Block
84003764	Outagamie	Kaukauna	124-128 E. 3rd St.	Martens, Julius J., Company Building
84003765	Outagamie	Kaukauna	309 Division St.	Meade, Capt. Matthew J., House
84003767	Outagamie	Kaukauna	109 E. 8th St.	Nicolet Public School
97001644	Outagamie	Kaukauna	Address Restricted	Osprey Site
84003768	Outagamie	Kaukauna	320 Dixon St.	St. Andrews, Frank, House
84003769	Outagamie	Kaukauna	119 W. 7th St.	St. Mary's Catholic Church
84003770	Outagamie	Kaukauna	705 W. Wisconsin Ave.	Stribley, Charles W., House
91001990	Outagamie	Kaukauna	112 Main Ave.	US Post Office, Former
93000070	Outagamie	Kimberly	416 N. Sidney St.	Geenen, William and Susanna, House
93001328	Outagamie	Little Chute	4527 E. Wisconsin Rd.	Cedars Lock and Dam Historic District
93001325	Outagamie	Little Chute	Roughly, along the Fox R. from Mill St. to Sanatorium Rd.	Little Chute Locks and Canal Historic District
82000641	Calumet	Brillion	Milwaukee and Randolph Sts	Haese Memorial Village Historic District
78000079	Calumet	Brothertown	Address Restricted	Ridge Group
85003136	Calumet	Charlestown	Address Restricted	Aebischer Site (47CT30)
82000640	Calumet	Chilton	206 Court St.	Calumet County Courthouse
00001249	Calumet	Chilton	57 East Main St.	Chilton Post Office
96001629	Calumet	Harrison	High Cliff State Park	High Cliff Mounds
96000727	Calumet	New Holstein	1600 Main St.	Timm, Herman C., House
97001551	Calumet	Stockbridge	Calumet County Park	Calumet County Park Group
98001089	Calumet	Stockbridge	Address Restricted	Stockbridge Harbor
80000111	Calumet	Stockbridge	N of Stockbridge off STH 55	Stockbridge Indian Cemetery
92000818	Winnebago	Algoma	Address Restricted	Bell Site ³
84003825	Winnebago	Clayton	WI 150	Larson Brothers Airport
86001181	Winnebago	Menasha	68 Racine St.	Augustin, Gustav, Block
97000366	Winnebago	Menasha	348 Naymut St.	Banta, George, Sr. and Ellen, House
86001541	Winnebago	Menasha	1 Main St.	Brin Building

³ The property is eligible, but not listed on the National Register due to owner objections.

Reference #	County	City/Village/ Township	Location	Historic Name
85001368	Winnebago	Menasha	Address Restricted	Doty Island (47-WN-30)
86001539	Winnebago	Menasha	2 Tayco St.	Koch, Carl, Block
84003826	Winnebago	Menasha	124 Main St.	Menasha City Hall ⁴
93001330	Winnebago	Menasha	Fox R. at Mill St.	Menasha Dam
93001323	Winnebago	Menasha	Address Restricted	Menasha Lock Site
86001182	Winnebago	Menasha	Tayco and Water Sts.	Tayco Street Bridge
86001518	Winnebago	Menasha	84 Racine St.	US Post Office--Menasha
84000714	Winnebago	Menasha	163-240 Main, 3 Mill, 56 Racine, and 408 Water Sts.	Upper Main Street Historic District
86001180	Winnebago	Menasha	214--216 Washington St.	Washington Street Historic District
74000141	Winnebago	Neenah	537 E. Wisconsin Ave.	Babcock, Havilah, House
08000121	Winnebago	Neenah	220 North Park Avenue	Beals, Edward D., and Vina Shattuck, House
93000144	Winnebago	Neenah	579 E. Wisconsin Ave.	Bergstrom, George O., House
94000134	Winnebago	Neenah	500 N. Commercial St.	Chicago and Northwestern Railroad Depot
95001552	Winnebago	Neenah	Address Restricted	Doty Island Village Site
05001229	Winnebago	Neenah	Generally bounded by East Forest Avenue, Webster Street, Hewitt Street, and Eleventh Street	East Forest Avenue Historic District
87001123	Winnebago	Neenah	345 E. Wisconsin Ave.	Gram, Hans, House
74000143	Winnebago	Neenah	Doty Park (Lincoln St.)	Grand Loggery
97000430	Winnebago	Neenah	433 E. Wisconsin Ave.	Hawks, Frank Winchester, House
92000110	Winnebago	Neenah	711 E. Forest Ave.	Jennings, Ellis, House
03000898	Winnebago	Neenah	331 East Wisconsin Avenue	Jersild, Reverend Jens N., House
96000907	Winnebago	Neenah	516 E. Forest Ave.	Kerwin, Judge J. C., House
12001275	Winnebago	Neenah	290 Lake Shore Avenue	Kimberly Point Park Lighthouse
03000899	Winnebago	Neenah	1102 East Forest Avenue	Lindsley, Perry, House
90001743	Winnebago	Neenah	307 S. Commercial St.	Neenah United States Post Office
87000462	Winnebago	Neenah	251 E. Doty Ave.	Paepke, Henry, House
03000897	Winnebago	Neenah	256 North Park Avenue	Sensenbrenner, J. Leslie, House
78000153	Winnebago	Neenah	547 E. Wisconsin Ave.	Shattuck, Franklyn C., House
99001607	Winnebago	Neenah	527 E. Wisconsin Ave.	Sherry, Henry, House
79000122	Winnebago	Neenah	824 E. Forest Ave.	Smith, Charles R., House
82000735	Winnebago	Neenah	706 E. Forest Ave.	Smith, Henry Spencer, House
96000990	Winnebago	Neenah	347 Smith Street	Smith, Hiram, House
96001575	Winnebago	Neenah	413 Church St.	Van Ostrand, Dewitt Clinton, House
83004366	Winnebago	Neenah	1590 Oakridge Rd.	Vining, Gorham, P., House
00000523	Winnebago	Neenah	620 East Forest Avenue	Whiting, Frank B., House

⁴ Building demolished, property removed from the National Register.

Reference #	County	City/Village/ Township	Location	Historic Name
11000204	Winnebago	Neenah	98 Fifth Street	Whiting, Frank, Boathouse
93000400	Winnebago	Neenah	143 N. Park Ave.	Wing, William C., House
84003827	Winnebago	Neenah	106-226 W. Wisconsin Ave., 110 Church St.	Wisconsin Avenue Historic District
87001062	Winnebago	Nekimi	5028 S. Green Bay Rd.	Black Oak School
78000148	Winnebago	Omro	W of Omro on WI 21	Cole Watch Tower
96000248	Winnebago	Omro	Jct. of Main St. and S. Webster Ave.	Omro Downtown Historic District
85001369	Winnebago	Omro	515 S. Webster St.	Omro High School, Annex and Webster Manual Training School
97000327	Winnebago	Omro	144 E. Main St.	Omro Village Hall and Engine House
94001368	Winnebago	Oshkosh	Roughly, Algoma Blvd. from Woodland Ave. to Hollister Ave.	Algoma Boulevard Historic District
74000140	Winnebago	Oshkosh	1174 Algoma Blvd.	Algoma Boulevard Methodist Church
82000730	Winnebago	Oshkosh	1157 High Ave.	Amos House ⁵
82000731	Winnebago	Oshkosh	1010 Bayshore Dr.	Bowen, Abraham Briggs, House
95001505	Winnebago	Oshkosh	17 W. Sixth Ave.	Brooklyn No. 4 Fire House
79000119	Winnebago	Oshkosh	2119 N. Main St.	Buckstaff Observatory ⁶
82005125	Winnebago	Oshkosh	1610 Doty St.	Chief Oshkosh Brewery
82000732	Winnebago	Oshkosh	224 State St.	Daily Northwestern Building
95000247	Winnebago	Oshkosh	502 N. Main St.	First Methodist Church
74000142	Winnebago	Oshkosh	110 Church Ave.	First Presbyterian Church
82000733	Winnebago	Oshkosh	132-140 High St. and 9 Brown St.	Frontenac
84003824	Winnebago	Oshkosh	1200 Washington Ave.	Guenther, Richard, House
78000151	Winnebago	Oshkosh	1149 Algoma Blvd.	Hooper, Jessie Jack, House
94000156	Winnebago	Oshkosh	Roughly bounded by W. Irving Ave., Franklin St., Church Ave., Wisconsin St. and Amherst Ave.	Irving Church Historic District
82000734	Winnebago	Oshkosh	1449 Knapp St.	Lutz, Robert, House
99001174	Winnebago	Oshkosh	809 Ceape Ave.	Mayer--Banderob House
83004365	Winnebago	Oshkosh	234 Church Ave.	Morgan, John R., House
13000783	Winnebago	Oshkosh	North Main Street generally bounded by Nevada Avenue and Huron Avenue	North Main Street Bungalow Historic District
96000250	Winnebago	Oshkosh	Roughly, N. Main St. from Parkway Ave. to Algoma Blvd., and Market St. NW. to High Ave.	North Main Street Historic District
85002334	Winnebago	Oshkosh	240 Algoma Blvd.	Orville Beach Memorial Manual Training School

⁵ Removed from the National Register.

⁶ Observatory dismantled, property removed from the National Register.

Reference #	County	City/Village/Township	Location	Historic Name
74000144	Winnebago	Oshkosh	100 High Ave.	Oshkosh Grand Opera House
84000722	Winnebago	Oshkosh	Buildings at 800, 842, and 912 Algoma Blvd., and 845 Elmwood Ave.	Oshkosh State Normal School Historic District
75000086	Winnebago	Oshkosh	Address Restricted	Overton Archeological District
79000121	Winnebago	Oshkosh	842 Algoma Blvd.	Oviatt House
78000152	Winnebago	Oshkosh	1410 Algoma Blvd.	Paine Art Center and Arboretum
86001392	Winnebago	Oshkosh	Off Congress Ave. roughly betw. High, New York, and Summit aves., and Paine Lumber access Rd.	Paine Lumber Company Historic District
84000728	Winnebago	Oshkosh	765 Algoma Blvd.	Pollock, William E., Residence
93000025	Winnebago	Oshkosh	1120 Algoma Blvd.	Read School
03000578	Winnebago	Oshkosh	1901 Algoma Boulevard	Riverside Cemetery
94001212	Winnebago	Oshkosh	903 Oregon St.	Security Bank
74000145	Winnebago	Oshkosh	203 Algoma Blvd.	Trinity Episcopal Church
84000732	Winnebago	Oshkosh	751 Algoma Blvd.	Wall, Thomas R., Residence
86001129	Winnebago	Oshkosh	Roughly bounded by Merritt Ave., Linde and Lampert Sts., Washington Ave., Bowen and Evan Sts.	Washington Avenue Historic District
93000068	Winnebago	Oshkosh	1141 Algoma Blvd.	Waterman, S. H., House
82000736	Winnebago	Oshkosh	415 Jackson St.	Winnebago County Courthouse
82000737	Winnebago	Oshkosh	220 Washington Ave.	Wisconsin National Life Insurance Building
82000725	Winnebago	Rushford	Address Restricted	Carpenter Site (47 Wn 246)
76000082	Winnebago	Rushford	S of Eureka on Fox River	Eureka Lock and Lock Tender's House
84003823	Winnebago	Vinland	Address Restricted	Brainerd Site
75000084	Winnebago	Winneconne	SE corner of Main and Washington Sts.	Grignon, Augustin, Hotel
75000085	Winnebago	Winneconne	Address Restricted	Kamrath Site
79000120	Winnebago	Winneconne	Address Restricted	Lasley's Point Site
88003070	Winnebago	Wolf River	Address Restricted	Metzig Garden Site (47WN283)

Source: Wisconsin Historical Society. <http://www.wisconsinhistory.org/> Accessed July 30, 2014.

Cultural Feature Names

- World's 1st Hydroelectric Central Station
- 1st Electric Street Railway
- Appleton Public Library
- Trout Museum of Art
- The Building for Kids - Children's Museum
- Hearthstone Historic House Museum
- History Museum at the Castle
- Paper Discovery Center
- Fox Cities Performing Arts Center
- Appleton Wire Works
- J.B. Courtney Woolen Mills
- Hearthstone
- Main Hall, Lawrence University
- Masonic Temple
- Henry Schuetter House
- St. Paul Evangelical Lutheran Church
- Temple Zion & School
- James Tompkins House
- Washington School
- John Hart Whorton House
- Zion Lutheran Church
- Lutz Ice Cream Artesian Well Site
- Trettin House
- Replica First Hydro Electric Central Station

Appleton City Park Historic District

College Avenue Historic District

Fox River Paper Co. Historic District

Appleton Locks 1-3 Historic District

Prospect Avenue Historic District

Appleton Lock 4 Historic District

-
- College Avenue Historic District**
- 10.
 - 17.
 - 30.
- Fox River Paper Co. Historic District**
- 32.
 - 36.
 - 42.
- Prospect Avenue Historic District**
- 39.
 - 96.
- Appleton Locks 1-3 Historic District**
- 18.
 - 20.
 - 25.
 - 33.
- Appleton Lock 4 Historic District**
- 1.
 - 24.
 - 34.
 - 97.

Source: Wisconsin Department of Transportation, Wisconsin State Historic Markers database, <http://www.wisconsinmarkers.com/>.
Base data provided by Winebag, <http://www.winebag.com/>.
Cultural data provided by Wisconsin Historical Society website, <http://www.wisconsinhistory.org/>.
TMA/adjusted Urbanized Area provided by WISDOT/WISRPC 2010 State and National Register of Historic Places & Wisconsin State Historic Markers database from Wisconsin Historical Society website.
Yellowstone Trail data provided by Yellowstonetrail.org.
City designated historic sites downloaded from City of Fond du Lac website, <http://www.fonddulacwi.com/>.
Cemetery data: www.rootsweb.ancestry.com
This data was created for use by the East Central Wisconsin Regional Planning Commission Geographic Information System. Any other use/application of this information is the responsibility of the user and such use is not warranted. The Wisconsin Department of Transportation and the Wisconsin Planning Commission disclaims all liability regarding fitness of the information for any use other than for East Central Wisconsin Regional Planning Commission business.



Prepared FEBRUARY 2015 by:
East Central Wisconsin
Regional Planning Commission
ECWRPC

Map 16-7

Appleton TMA Cultural Features

- Historical Markers
- Libraries
- Museums
- Performing Art Centers
- Historic Sites
- Locally Significant Historic Sites
- Short Range Project
- Illustrative Project
- Rustic Roads
- Yellowstone Trail
- Short Range Project
- Illustrative Project
- Appleton Transportation Management Area
- County Boundary
- Municipal Boundary
- Historic Districts
- Cemeteries
- Downtown Insets



DRAFT

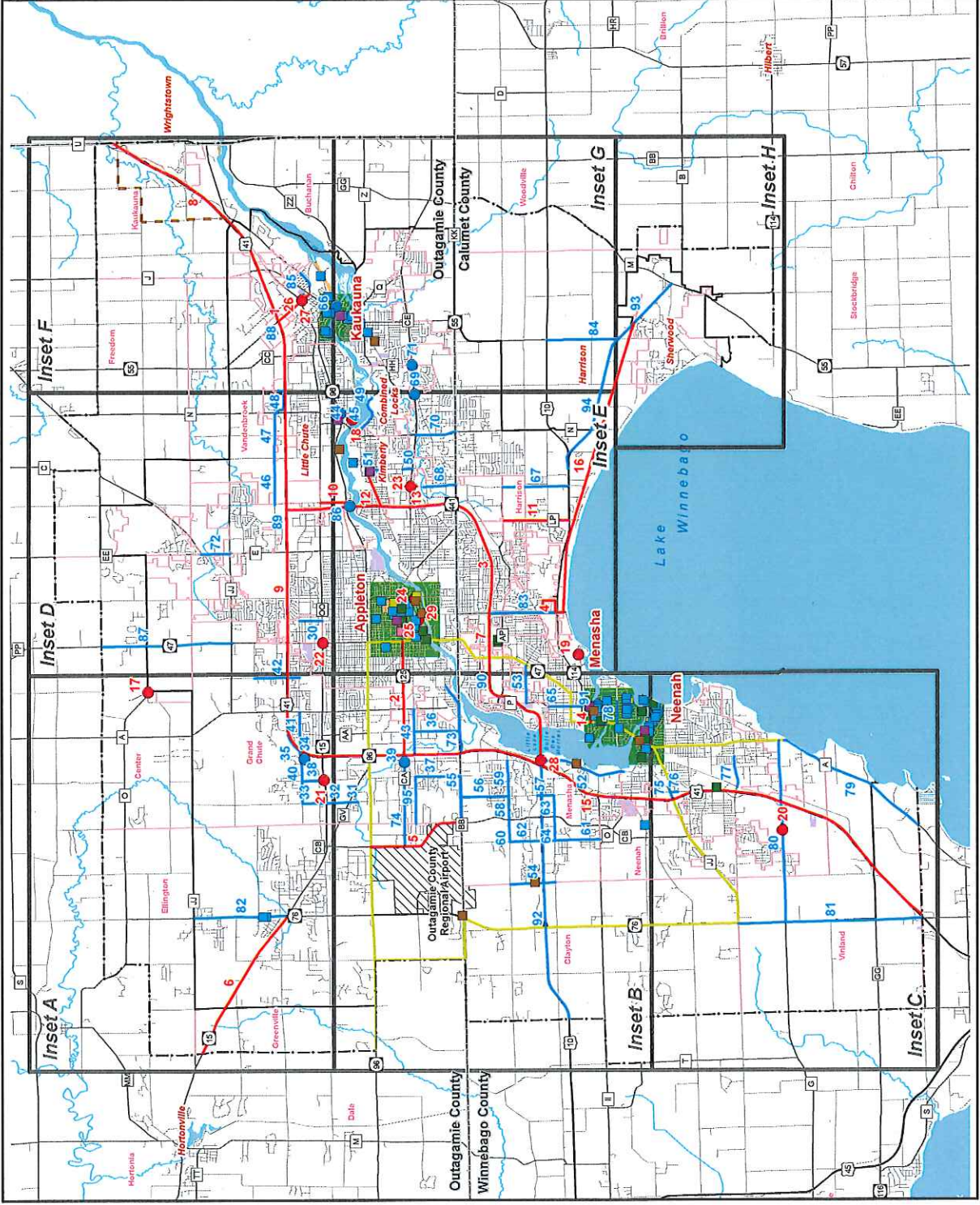
Scale in Miles
0 1 2

Source:

Base data provided by Winnebago, Calumet, and Outagamie Counties 2010.
TMA/Adjusted Urbanized Area provided by WisDOT/ECWRPC 2010
State & National Register of Historic Places & Wisconsin State Historic
Markers downloaded from Wisconsin Historical Society website.
Yellowstone Trail data provided by YellowstoneTrail.org.
City designated historic sites downloaded from City of Fond du Lac
website.
Cemetery data: www.rootsweb.ancestry.com

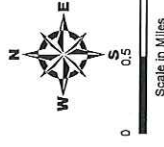
This data was created for use by the East Central Wisconsin Regional
Planning Commission Geographic Information System. Any other
use or reproduction of this information is the responsibility of the user and such
use or reproduction does not constitute an endorsement or approval by the
Planning Commission. The Planning Commission disclaims all liability regarding fitness of the
information for any use other than for East Central Wisconsin Regional
Planning Commission business.

Prepared FEBRUARY 2015 by:



 Cemeteries

- Historical Markers
 Libraries
 Museums
 Performing Arts Centers
 Historic Sites
 Locally Significant Historic Sites
 Short Range Project
 Illustrative Project
 Short Range Project
 Illustrative Project
 Yellowstone Trail
 Rustic Roads
 Appleton Transportation Management
 County Boundary
 Municipal Boundary
 Historic Districts
 Downtown Inset
 250 Ft. TIP Bridge Buffer
 1/4 Mile TIP Project Buffer



DRAFT

Source:

000

Base data provided by Winnebago, Calumet, and Outagamie Counties 2010.
TMA/adjusted Urbanized Area provided by WisDOT/ECWRPC 2010
State & National Register of Historic Places & Wisconsin State Historic
Markers downloaded from Wisconsin Historical Society website.
Yellowstone Trail data provided by YellowstoneTrail.org.
City designated historic sites downloaded from City of Fond du Lac
website.

Cemetery data: www.rootsweb.ancestry.com
Website.

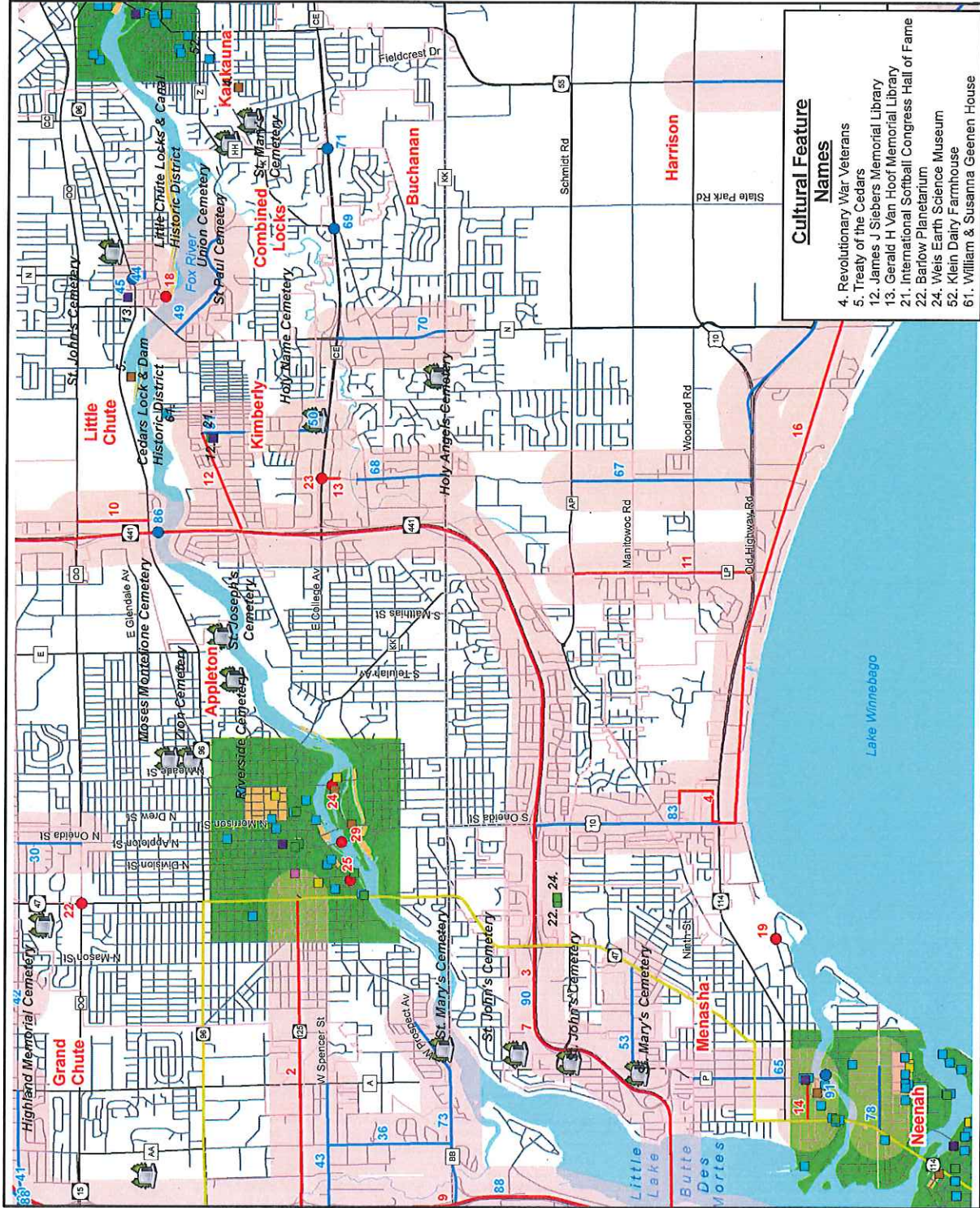
This data was created for use by the East Central Wisconsin Regional Planning Commission Geographic Information System. Any other use/application of this information is the responsibility of the user and such use/application is at their own risk. East Central Wisconsin Regional Planning Commission disclaims all liability regarding fitness of the information for any use other than for East Central Wisconsin Regional Planning Commission business.

Prepared FEBRUARY 2015 by:

East Central Wisconsin



TD 011312FoxOshkoshLRTP\%XD%\FoxCities\Environment\21Mitigation\CulturalMap_10_7_inse1_E.mxd



Cultural Feature

Names	Age	Gender	Occupation	Education	Marital Status	Religion	Political Party	Income	Assets	Liabilities	Net Worth
John Doe	35	Male	Software Engineer	Bachelor's	Married	Christian	Democrat	\$75,000	\$150,000	\$50,000	\$100,000
Jane Smith	42	Female	Marketing Manager	Master's	Single	Jewish	Republican	\$90,000	\$200,000	\$75,000	\$125,000
Michael Brown	28	Male	Teacher	Bachelor's	Married	Muslim	Democrat	\$60,000	\$80,000	\$30,000	\$50,000
Emily White	31	Female	Graphic Designer	Bachelor's	Single	Hindu	Democrat	\$55,000	\$65,000	\$20,000	\$45,000
David Green	45	Male	Business Owner	Master's	Married	Buddhist	Republican	\$120,000	\$300,000	\$100,000	\$200,000
Sarah Black	38	Female	Consultant	Master's	Single	Sikh	Democrat	\$85,000	\$180,000	\$60,000	\$120,000
Robert Lee	50	Male	Retired	High School	Married	Christian	Republican	\$40,000	\$100,000	\$40,000	\$60,000
Lisa King	25	Female	Student	Bachelor's	Single	Jewish	Democrat	\$30,000	\$40,000	\$10,000	\$30,000
James Hall	40	Male	Doctor	PhD	Married	Muslim	Democrat	\$110,000	\$250,000	\$80,000	\$170,000
Amanda Young	33	Female	Writer	Bachelor's	Single	Hindu	Democrat	\$50,000	\$70,000	\$25,000	\$45,000
Christopher Adams	48	Male	Engineer	Master's	Married	Buddhist	Republican	\$70,000	\$160,000	\$55,000	\$105,000
Nicole Baker	29	Female	Analyst	Bachelor's	Single	Sikh	Democrat	\$65,000	\$90,000	\$35,000	\$55,000
Kevin Clark	36	Male	Manager	Master's	Married	Christian	Democrat	\$80,000	\$170,000	\$65,000	\$105,000
Michelle Evans	41	Female	Architect	Master's	Single	Jewish	Democrat	\$95,000	\$210,000	\$70,000	\$140,000
Brandon Foster	27	Male	Developer	Bachelor's	Married	Muslim	Democrat	\$68,000	\$95,000	\$38,000	\$57,000
Stephanie Grant	34	Female	Researcher	PhD	Single	Hindu	Democrat	\$72,000	\$155,000	\$52,000	\$103,000
Gregory Hill	52	Male	Retired	High School	Married	Buddhist	Republican	\$35,000	\$90,000	\$45,000	\$45,000
Victoria King	30	Female	Designer	Bachelor's	Single	Sikh	Democrat	\$58,000	\$75,000	\$28,000	\$47,000
Timothy Lee	43	Male	Engineer	Master's	Married	Christian	Democrat	\$78,000	\$165,000	\$62,000	\$103,000
Christina Miller	26	Female	Analyst	Bachelor's	Single	Jewish	Democrat	\$62,000	\$85,000	\$32,000	\$53,000
Jonathan Moore	46	Male	Manager	Master's	Married	Muslim	Democrat	\$82,000	\$175,000	\$67,000	\$108,000
Angela Parker	37	Female	Writer	Bachelor's	Single	Hindu	Democrat	\$52,000	\$72,000	\$27,000	\$45,000
Benjamin Reed	49	Male	Engineer	Master's	Married	Buddhist	Republican	\$75,000	\$160,000	\$58,000	\$102,000
Olivia Scott	28	Female	Student	Bachelor's	Single	Sikh	Democrat	\$32,000	\$45,000	\$12,000	\$33,000
Christopher Taylor	44	Male	Manager	Master's	Married	Christian	Democrat	\$88,000	\$185,000	\$72,000	\$113,000
Isabella White	32	Female	Analyst	Bachelor's	Single	Jewish	Democrat	\$67,000	\$92,000	\$37,000	\$55,000
Matthew Young	47	Male	Engineer	Master's	Married	Muslim	Democrat	\$85,000	\$178,000	\$68,000	\$110,000
Grace Adams	29	Female	Student	Bachelor's	Single	Hindu	Democrat	\$31,000	\$42,000	\$11,000	\$31,000
Christopher Baker	51	Male	Retired	High School	Married	Buddhist	Republican	\$38,000	\$95,000	\$48,000	\$47,000
Madeline Clark	35	Female	Analyst	Bachelor's	Single	Sikh	Democrat	\$69,000	\$98,000	\$39,000	\$59,000
Christopher Evans	40	Male	Manager	Master's	Married	Christian	Democrat	\$83,000	\$172,000	\$69,000	\$103,000
Madeline Foster	27	Female	Student	Bachelor's	Single	Jewish	Democrat	\$33,000	\$48,000	\$13,000	\$35,000
Christopher Grant	45	Male	Engineer	Master's	Married	Muslim	Democrat	\$87,000	\$182,000	\$71,000	\$111,000
Madeline Hill	30	Female	Analyst	Bachelor's	Single	Hindu	Democrat	\$64,000	\$88,000	\$34,000	\$54,

4. Revolutionary War Veterans
5. Treaty of the Cedars
12. James J. Siebers Memorial Library
13. Gerald H. Van Hoof Memorial Library
21. International Sorbail Congress Hall of Fame
22. Barlow Planetarium
24. Weis Earth Science Museum
52. Klein Dairy Farmhouse
61. William & Susanna Geenen House

Dedication of the Vulcan Street Plant and National Historic Preservation Month Celebration

Date: Memorial Day (May 25) 2015

Time: Dedication ceremony at 2:00, plant open for viewing 1:30 to 4:30

Things that need to be done:

1. Contact ADI about Trolley
2. Contact Fox River Paper about parking and site use
3. Obtain necessary permits
4. Obtain A/V and other stuff for ceremony
5. Recruit and train interpreters / operators for the plant
6. Obtain permits for operating the plant, if necessary
7. Contact media and WHS for publicity and coverage
8. Discuss opportunities for collaboration with Hearthstone, Castle Museum, Paper Discovery Center, Grignon, Locks and Convention and Visitor's Bureau, e.g. potential for a "combined ticket" and coordinated special events
9. Send out invitations

Invitees:

1. Mayor
2. Council
3. Other City Staff (who?)
4. ADI
5. Convention and Visitors Bureau
6. Historic Third Ward
7. City Park Association
8. LU
9. Friends of Fox
10. Fox River Navigation Authority
11. Fox Wisconsin Heritage Parkway
12. Hearthstone
13. Paper Discovery Center
14. Outagamie Historical Society
15. Appleton Historical Society
16. Grignon
17. Wisconsin Historical Society
18. Wisconsin Electric
19. American Society of Civil Engineers
20. American Society of Mechanical Engineers
21. Institute of Electrical and Electronics Engineers
22. Wisconsin Historical Society
23. National Register of Historic Places

City of Appleton Historic Preservation Commission

Planning a Historical Marker Dedication Ceremony Guidelines

Publicity

- Gather publicity materials – clear photographs and a brief, simplified history of the topic or site
- Work with the City of Appleton’s Communications Specialist to prepare a press release with your specific information.
- City of Appleton’s Communications Specialist will send copies of the press release along with the photographs and history to local news media and/or post on the Internet.
- Invite the public.
- Invite City Officials Mayor, Alderpersons, Department Directors, City staff.
- Invite representatives from the State of Wisconsin Historical Society Historical Commission, Appleton Historical Society, Outagamie County Historical Society, and other organizations.

Please note: variables in the application procedures and manufacturing process make it prudent to wait until your marker arrives to set a date for the dedication.

The Ceremony

Consider including the following activities:

- Welcome from the City of Appleton Historic Preservation Commission Chairperson.
- Introduction of distinguished guests [with comments made by the City of Appleton Historic Preservation Commission Chairperson].
- A brief synopsis of the history of the marker topic.
- Unveiling of the marker [using an appropriately dignified cover] and reading of the text.
- Expressions of appreciation to those involved in the project.

A printed program for the dedication ceremony which should include several basic components (Department Director approval required):

- Date, time and place of the ceremony
- List of speakers
- Acknowledgments to those who worked on the project
- Copy of the marker text

What is the Historic Preservation Commission?

What is the Historic Preservation Commission?

The Historic Preservation Commission (HPC) has the power to recommend local designation of historic structures, sites and districts within the City of Appleton. HPC members have special interest in, and knowledge of, matters related to the historical, archeological, cultural and architectural elements that reflect the accomplishments and legacy of the earliest settlers in the Fox Valley.

What does local designation mean and what are the benefits?

Designation means the site, structure or district has significant benefit to the historic, architectural and cultural heritage of the city. Benefits include:

- ⌘ Preservation of Appleton's history
- ⌘ Neighborhood stabilization and possible property value improvements
- ⌘ Civic pride in notable past accomplishments

How do I apply for historic designation?

- ⌘ Promotion of the use of historic structures, sites and districts for educational use and tourism

Who can apply for local designation?

An application will not be accepted without the original signature of the property owner or owner's designated agent.

Is there a fee for application?

There is currently no fee for application.

How do I apply for Historic Designation?

Applications are available online or at the Community Development Dept. office on the 5th floor of City Hall. Detailed instructions accompany the application, however contacting the Community Development Dept. to discuss your interest in applying for designation is recommended. Other sources of information for your application are:

Can I change the appearance of a designated property/site?

- ⌘ HPC members
- ⌘ Appleton Public Library
- ⌘ Appleton Downtown, Inc. (ADI)
- ⌘ History Museum at the Castle
- ⌘ Outagamie, Winnebago and Calumet County Courthouses
- ⌘ State Historic Preservation Office
- ⌘ Lawrence University Library

Applications must have the original signature of the property owner or other authorized representative of the owner.

What if an owner wants to reconstruct, alter or demolish a local designated structure or site?

Approval from the HPC is required for any exterior alteration, construction, reconstruction or demolition of a local designated historic structure or site or any property within a local designated historic district and requires a building permit. Ordinary exterior maintenance and repairs (i.e. painting, refinishing nonstructural elements, or replacing elements with identical pieces) may be performed without HPC approval, provided a building permit is not required.

If we wish to have a future with greater meaning, we must concern ourselves...with the total heritage of the nation and all that is worth preserving from our past as a living part of the present. –With Heritage So Rich, 1966

City of Appleton Historic Preservation Commission

Guide to preserving Appleton's
heritage and how the
Commission can help

FOR MORE INFORMATION ABOUT THE
HISTORIC PRESERVATION
COMMISSION AND THE DESIGNATION
PROCESS, CONTACT THE COMMUNITY
DEVELOPMENT DEPARTMENT

Ph 920.832.6468
Fx 920.832.5994
100 N. Appleton Street
Appleton, WI 54911
www.appleton.org

City of Appleton Historic Preservation Commission

Guide to Local Designated
Historic Sites and Buildings in the
City of Appleton



Local Designated Buildings and Sites



Trettin House - 523 Eighth Street

This structure is a two-family home that was constructed in 1918 and is an example of the Prairie style. The house was designed by architect Edward Wettengel Sr. It was designated as a local historic structure in 2005.

1



Henry Schuetter House - 330 Sixth Street

This structure is a single-family home that was constructed in 1890 and is an example of the Queen Anne style. The house was designed by local architect G.A. Tenbusch. It was designated as a local historic structure in 2004.

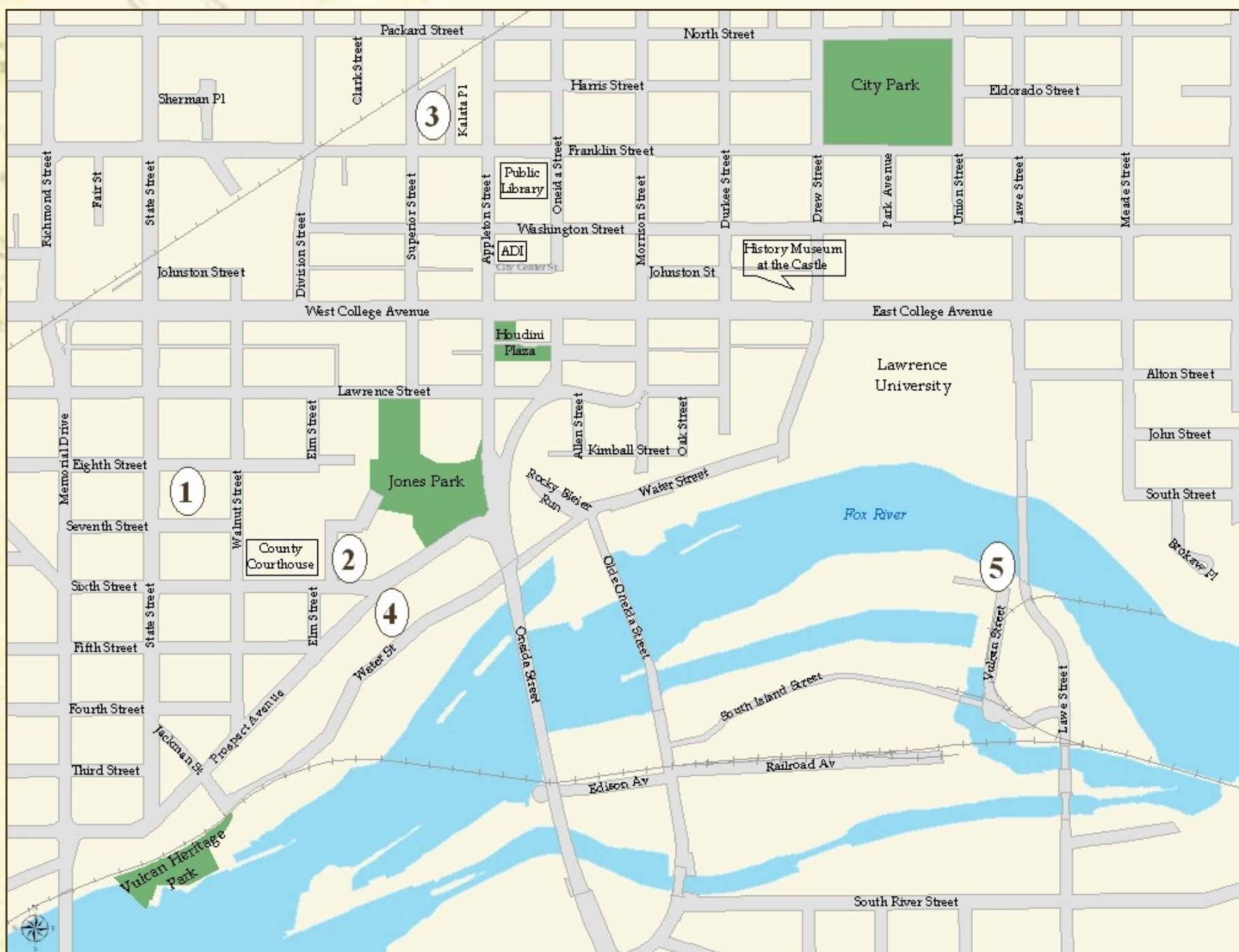
2



Union Springs Park
Lutz Ice Company Artesian Well Site
323 Kalata Place

This is the site of the artesian well which supplied water from 500 feet underground to the Lutz Ice Company at a rate of 100 gallons per minute. This park was designated as a local historic site in 1997.

3



John Hart Whorton House
315 Prospect Avenue

This structure is a single-family home that was constructed in 1870 and is an example of the High Victorian Italianate Villa style. John Hart Whorton was instrumental in the organization of the Fox River Paper Company. The house was designated as a local historic structure in 2000.

4



Vulcan Street
Plant Replica
530 Vulcan Street

On November 25, 1882, the Vulcan Street Hydroelectric Central Station began operation. The Vulcan Street Plant represents an early use of hydro-power to generate electricity and perhaps one of the earliest examples of a hydroelectric plant that sold electricity commercially and provided incandescent lighting service to the public. The replica was designated as a local historic structure in 2007.

5

A Walk Through Appleton's Old Third Ward



Strolling down the tree-lined streets of Appleton's Historic Old Third Ward is a walk back in time one hundred and fifty years. As you go, your eyes feast on a banquet of architectural styles, nineteenth and twentieth century co-mingled, reflecting a coming together of people from all walks of life with a common goal of building a community and nation.

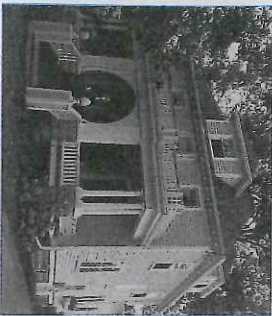
In 1849 pioneers Theodore Conkey, Morgan L. Martin and A.B. Bowen acquired considerable property and waterpower rights along the north bank of the Fox River. They laid out a town plat and named it "Grand Chute" after the great rapids of the Fox roaring below the bluff. The settlement was one of a trio, the other two being Appleton and Lavesburg, that incorporated into the city of Appleton in 1857. The former villages became rival districts, each having its own schools, fire warden and road tax. Geology defined boundaries between the "Fighting Third" ward (formerly Grand Chute) and the downtown district of the Second as Mill Creek cut a ravine across the city. Only Jones Park remains of that once distinct line.

Though early white settlers were French, Yankee pioneers attracted by the "culture" of a college town soon comprised the majority of Appleton. Irish immigrants leaving famine starved lands were lured to the Valley with the promise of work on the Fox building locks and dams to harness the river's waterpower. A nucleus of an Irish Catholic community formed in the Third Ward. Germans brought their trades and brewing knowledge.

From the banks of the Fox, Prospect Street industrialists kept vigil over their hydraulically run factories below. Home owners on this trend-setting street dictated the fashion of the day. Merchants, tradesmen, elected officials and judges located between Prospect and College to be near the main business district and Courthouse.

Begin your walk at any point and discover the people who built our neighborhood and city. It is our privilege to honor their hard labor and preserve the dreams of these pioneers.

Old Third Ward Neighborhood Association, Inc.



We would like to thank the following contributors for their hard work and in-kind donations: Image Studios, Pisani Graphics, Action Printers, Frank Council, Carolyn Kellogg, Ann Koehn, Marion Leisner, Linda Miltson, Ann Sager and the Fox Chutes Convention & Visitors Bureau. For more information contact the Old Third Ward Neighborhood Association, Inc. 532 S. State Street, Appleton, WI 54911 • Phone 414/733-5766.

36- 303 S Walnut (1875, Greek Revival) James P. Lennon- Lennon served as County Sheriff and Justice of the Peace. His descendants, the famous singing Lennon Sisters, have visited the home, as did Senator John F. Kennedy and his wife Jacqueline on a presidential campaign swing through Appleton. Home-owners have reported sightings of a ghostly woman wearing white in a bedroom too cold to be used, perhaps relating to a court case when Lennon tried to evict his sister for non-payment of rent. A ghost of a man wearing wing tip shoes also has appeared on the first floor.

37- 321 S Walnut (1890) George and Mary Walter- The Romanesque style George Walter Brewing Company stood on the site of the Appleton Police Station. This home survives as a reminder of this industrious family. Walter emigrated to Milwaukee from Germany in 1873 and found work at the Pabst Brewing Co. By 1876 he was foreman of Appleton's Wing and Fries Brewery, purchasing half interest in the company four years later. As sole owner in 1885, he first renamed his business the Star Brewery. In time, all the Walter siblings reunited in America.

38- 327 S Walnut (c. 1915, Ornamental Concrete Block) Peter Bartman- Mirroring a national trend, several "Ornamental Concrete Block" houses were built in the Old Third Ward for families of average means. With depletion of natural resources, builders turned to manmade materials. No longer experimental, the advent of "portland" cements made concrete blocks a strong, inexpensive alternative to brick or stone. Because blocks could be made at the work site, many different styles were possible. Architects were not as excited, however, and most likely the builder copied a manufacturer's catalogue or the house around the corner. Other examples in the Old Third Ward are located at 329, 335 and 340 W Prospect, 339, 608 and 617 W Sixth and 419 S State.

39- 401-403 S Walnut (c. 1890, Queen Anne) Michael and Anna Albery- Hotel proprietor Michael Albery and his wife Anna raised five daughters in this home. Albery served as President of the Geo. Walter Brewing Company and was a partner with Joseph Stier in a coke and coal business.

40- 410 S Walnut (1942, Art Deco) Outagamie Co. Administration Building- In 1851 State Senator Theodore Conkey introduced a bill to create a new county separate from Brown, suggesting the name of "Ulaghamie." With the establishment of Outagamie County, Conkey and his associates donated this block for a courthouse and jail. After interminable delays, a frame courthouse was built in 1855. A Second Empire structure designed by H. C. Koch & Company of Milwaukee replaced the original in 1882. The existing building was dedicated as a courthouse and became the Administration Building upon completion of the Justice Center to the north.

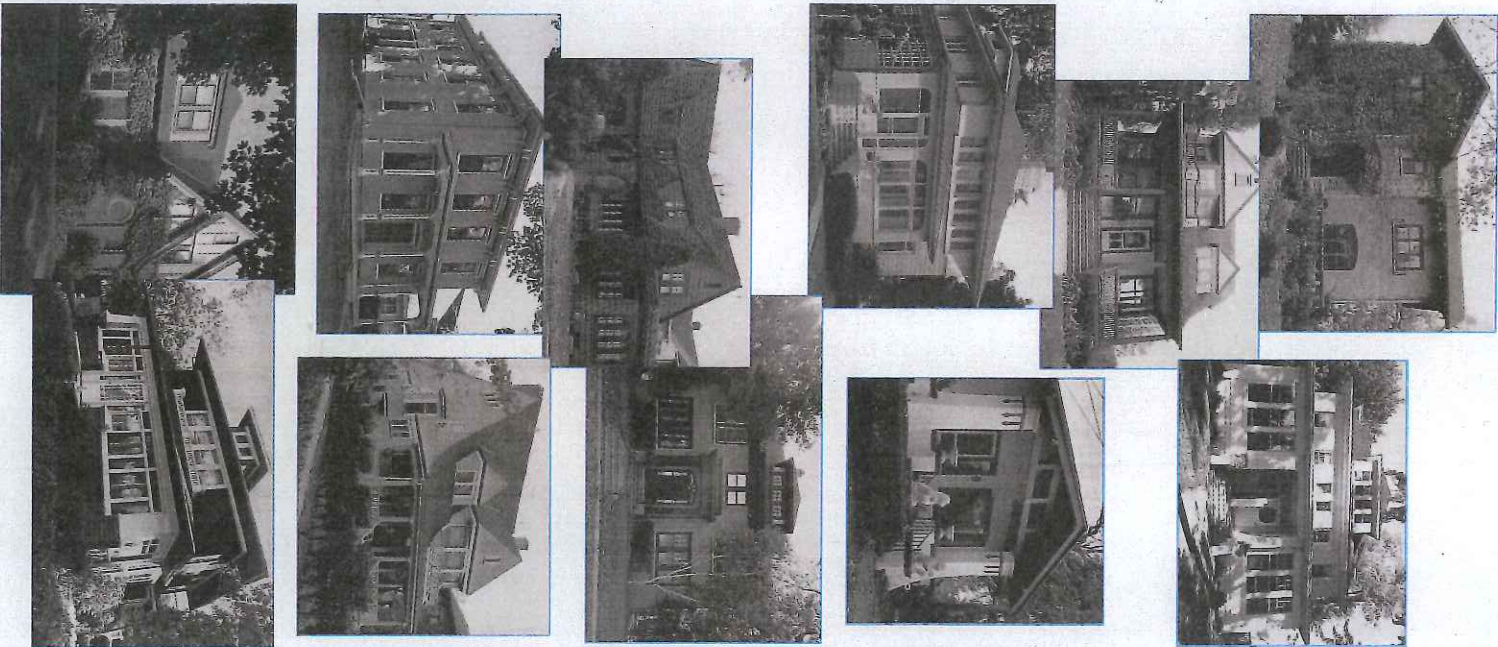
41- 413 S Walnut (c. 1898, Foursquare Eclectic) Francis Rooney- This home demonstrates changing architectural attitudes at the turn of the century. Notice the bracketed eaves and "eyebrow" window from the Queen Anne period combined with a hipped roof and dormer from the Queen Anne period combined with a hipped roof and dormer from the Queen Anne period. Before coming to Appleton, Attorney Francis Rooney served as Seymour's City Attorney, gaining fame by prosecuting Paul Krause for the murder of his ex-wife. Neighbors recall Rooney retained a carpenter to repair his garage, often damaged when he drove his Pierce Arrow through the back wall.

42- 419 S Walnut (1925, American Foursquare) Frank Schreier- This well-preserved example of a costly brick Foursquare house with its broad porch and massive square piers was designed by Edward Wetengel and built by Henry Boldt using Ohio brick and native Wisconsin birch wood-work. The eaves, with exposed rafter ends, and low gabled bargeboard dormers, exemplify "craftsman" elements showcasing the building's construction.

43- 518 S Walnut (1921, American Foursquare) Arthur and Mabel Liese- Arthur Liese worked as an agent for the C.M.& St. Paul Railway. His home exhibits original detailing characteristics of the American Foursquare style.

44- 601-603 S Walnut (1871, Italianate) Adam and Mary Mertes- "As honest as Adam Mertes" became a common expression used by nineteenth century Appletonians to describe a person of undoubted integrity. Mertes made his living as a stone mason and operated the city's first lime kiln. When the family arrived in the late 1840s, they were Appleton's first German Catholics,

Please confine your viewing to the front sidewalk



a Catholic church. Adam served on committees to plan for the building of St. Joseph's Church and establish the church cemetery.

45- 602 S Walnut (1897, Queen Anne) Matthew and Anna Rodermund- Several Queen Anne look-alike homes designed by W. W. DeLong were built in Appleton. This home matches others still in existence at 402 East Pacific Street and 220 South Morrison. Bay windows, towers and triangular gables are classic Queen Anne elements.

SOUTH ELM STREET

46- 517 S Elm (1917, Bungalow) George Prim- Police Chief Prim came to Appleton from Chicago and is legendary for his white beard, military bearing and for leading all of Appleton's parades mounted on his stately horse.

WEST FOURTH STREET

47- 617 W Fourth (1887) Philip Saxton- Saxton, prominent carpenter/contractor, built his house in a T-shape. The front addition is from the 1950s. Two of the Saxtons' three children never married and lived here their entire lives.

621 W Fourth (1882) George and Clara Gerry- Originally a landmark on the southeast corner of Fourth and Memorial, this home was moved here in the 1950s. The carriage house remains in its original location. When built by pioneer lumberman George Gerry, The Appleton Post reported, "George will not spare a saw-log to make (his) home comfortable and attractive." Because well-known Oshkosh fresco artist J. Frank Waldo worked on this house, it is believed William Waters, frequent associate of Waldo, was the architect. After George died in 1890, his widow Clara engaged in the Potts and Wood dairy business with son-in-law James A. Wood. By 1908, George Benjamin Baldwin, son of Judge George Baldwin, and his mother Catherine moved here from the family home at 707 S State.

WEST FIFTH STREET

49- 406 W Fifth (c. 1867) Anton Karls/J. P. Buck- The rear half of this house seems to date back to a home built by Prussian stone mason Anton Karls. In 1892, the front half was built as rental property by James P. Buck. Another owner, George Schmidt, partnered with father Matthias in his clothing store. Floorboards found in a 1901 addition were made from the crates used for shipping hats and suits to the store.

50- 412-416 W Fifth (1893, Queen Anne) Matthias and Mary Schmidt- This once fine residence belonged to Matthias Schmidt who emigrated from Germany in 1868. He lived on this property from the early 1870s and for decades ran a men's clothing store downtown advertising "Two Floors of Good Things to Wear." Slaying in the neighborhood became a family habit; sister Katie married August Lohman, neighbor to the north, sister Mary married Henry Schuetter of Sixth St; son George lived at 406 W Fifth, followed by daughter Isabelle (Steen), Christopher Mullen, descendant of pioneers and manager of Geenen's Department Store, lived here 20 years.

51- 420 W Fifth (c. 1910, Cross Gambrel) John Hayes- John Hayes, Chief Engineer for the Water Works, built this home featuring beveled glass and arched carved woodwork. In 1918, Roscoe and Augusta Cage purchased the house. Roscoe was a partner with Henry Gloudemans in the Gloudemans and Cage Department Store (est. 1910) complete with farmer's market. (See Gloudemans home at 603 S State.)

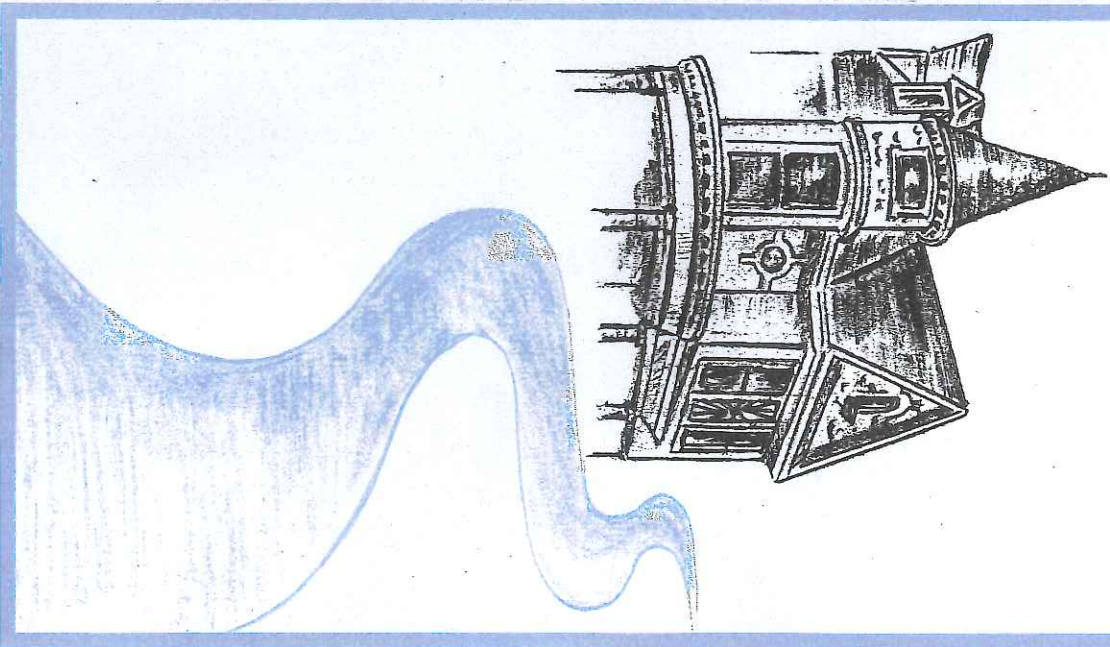
52- 515 W Fifth (c. 1851, Greek Revival Cottage) L. B. Leach- A rare example of a pioneer Wisconsin Vernacular Cottage, this home once stood at 720 E John St. To save it from destruction, Karl Schuetter and his wife Pearl (sister of Lester Baliet who lived here for many years) relocated the house in 1935. Their son's family was the first to occupy the home at its new location.

53- 525 W Fifth (c. 1891, Gothic Revival Cottage) - Early Sanborn maps identify this as the home of dressmaker Mary Barry. Built on the west edge of the ravine that cut Fifth St., it would have overlooked the neighborhood landfill.

54- 614 W Fifth (1884, Vernacular) James and Sarah Tompkins- The Tompkins built this home for retirement. In 1898 it was purchased by Fox River Paper Co. millwright Maurice Boland.

55- 620-622 W Fifth (c. 1886, Colonial Revival)- Possibly built for miller Peter Klumb, William Fountain, son and heir to the Fountain Lumber Company, also made his home here. Fountain Lumber was founded in 1881

APPLETON'S HISTORIC OLD THIRD WARD WALKING TOUR



56- 621 W Fifth (1904 Colonial Revival/Shingle Style) Henry Wickert- Originally yellow and green, this residence stands as one of the finer examples of the style. Note the "swooping" roof, Palladian windows and Doric porch columns. First resident, papermaker Henry Wickert, had lived across the street at 620 prior to building his dream home.

WEST SIXTH STREET

57- 330 W Sixth (1890, Queen Anne) Henry and Mary Schuetter- Appleton tailor Henry Schuetter hired local architect G. A. Tenbusch to design this classic home. Schuetter's merchant-tailoring business, established in 1883, became the largest of its kind in Northeastern Wisconsin, employing over twenty hands. Son Karl joined his father in the business. He purchased the Whorton house across Prospect. *National Register of Historic Places*

58- 335 W Sixth (c. 1890, Colonial Revival) Henry and Katie Tennie- Cigar maker Henry Tennie rented the upstairs of his home to brother Carl, founder of Tennie's Jewelry in Appleton. In 1951 the lower part of the house was rented by James Bradley whose son John helped raise the flag on Iwo Jima.

59- 403 W Sixth (1877, Italianate/Colonial Revival) Nicholas and Margaret Weiland- Local contractor Henry Hoffman built this house for the Weilands at a cost of \$2,000. Prussian born Nicholas came to America in 1856. He enlisted with the 32nd Wisconsin Infantry in 1862 eventually participating in General Sherman's march to the sea. A wound suffered at Bentonville cost him his right arm. In Appleton he purchased an interest in the Lawrence Flouring Mill and served many terms as Outagamie County Treasurer. Weiland's daughter Margaret married Charles Baldwin, heir to the Baldwin estate at 707 S. State.

60- 411 W Sixth (1922, Dutch Colonial Revival) Walter and Irma Driscoll- Driscoll, Secretary-Treasurer of Garvey Weyenberg Construction, built his home on land that the Weilands used for an orchard.

61- 417 W Sixth (1877) August and Kate Lohman- Lohman ran a barber-shop and bathhouse in The Waverly Hotel from the 1870s through the early part of this century. He married Matthias Schmidt's (Fifth St.) sister Katie. Herman Schommer, co-founder of Badger Printing and a descendant of pioneer Nicholas Schommer, lived in the home in the 1930s.

62- 523 W Sixth (1892, Queen Anne) Anton Nickasch- Anton was an early Appleton carpenter. Nickasch family members lived here until 1973.

WEST SEVENTH STREET

63- 522 W Seventh (1885, Queen Anne) St. Mary's Rectory- This brick and limestone rectory designed by Charles Howe replaced a frame structure. Father Walter Fitzmaurice, much loved pastor of the church, resided here for many years. He is believed to have been the inspiration for the priest in Edna Ferber's story Fanny Herself. A new rectory was built in 1963.

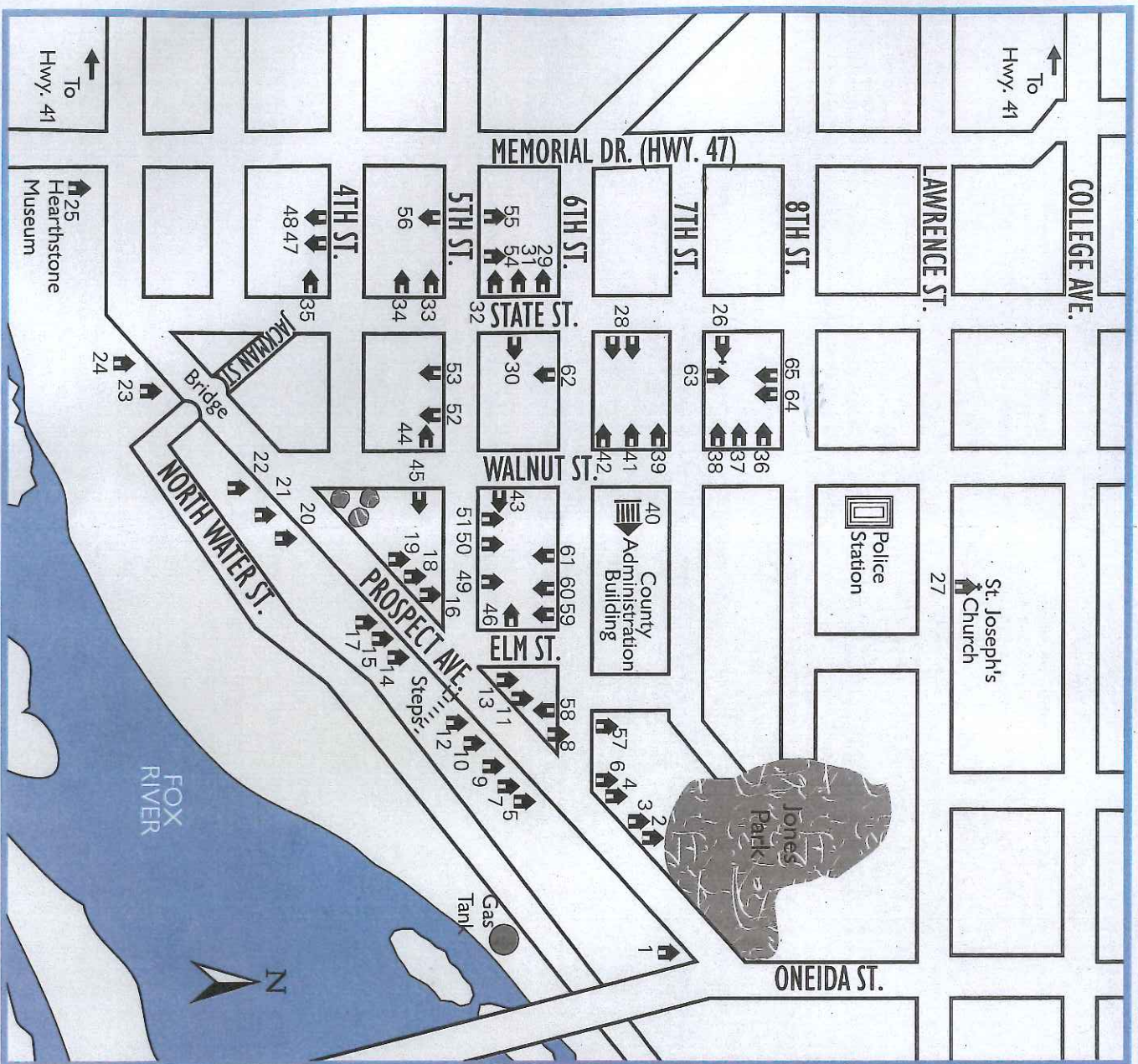
WEST EIGHTH STREET

Appleton's second fire station once occupied the northwest corner of Eighth and State. *Rioting between firemen at stations One and Two was occasionally blamed for less than efficient fighting of the all too prevalent fires.*

64- 517-519 W Eighth, Matthias and Barbara Rossmessl- Joseph and Elizabeth Rossmessl emigrated from Austria to Appleton in 1868. Sons Joseph and Matthias founded J & M Rossmessl, dealers in boots and shoes. Their establishment became the largest of its kind north of Milwaukee with three floors of shoes and advertised "Everything in Good Shoes at Everybody's Prices." Both men became involved in the Geo. Walter Brewing Company as did several of their descendants. Joe had five sons. He built and furnished a home for each of them when they married. At least five Rossmessl homes once existed on Eighth Street. Only Matthias house survives.

65- 523 Eighth (1918, Prairie Style) Edgar and Ancilla Walter- The Walters had Ed Wetengel, Sr. design and Martin Boldt & Son build this home just west of Ancilla's (Rossmessl) parents. They eventually moved to Eau Claire where Edgar (son of Geo) founded the Walter Brewing Company. In 1926 the home was purchased by August Trettin, owner of Bretschneider Furniture and Funeral Home.

APPLETON'S OLD THIRD WARD WALKING TOUR



home illustrates storybook cottage architecture popular in the 1920s.

12- 335 W Prospect (1903, Shingle/Colonial Revival) Jacob and Elizabeth Wolf. Turn-of-the-century eclecticism is seen in this late Victorian. The Wolf family owned and operated an Appleton shoe store for more than 80 years. Jacob planted the birch tree west of the house when his son returned from World War I.

The concrete steps descending to North Water Street once led boys and girls to an early twentieth century city swimming pool. They swam on alternate days as spectators watched from bleacher seats. Rumors persist that lifeguards would occasionally close the pool early, allowing one gender or the other to skinnydip after hours. East on North Water stands a gas holding tank. Appleton manufactured "town" gas by destructive distillation of coal from 1879 until the advent of natural gas.

13- 340 W Prospect (1910, Prairie School) Joseph and Henrietta Plank-Inventor Joseph Plank, a Wisconsin native, specialized in artistic paper watermarking and patented dandy rolls used in the industry world-wide. He was a valuable witness in court cases involving paper documents. Many homes on the southeast end of Prospect were built in the 1930s for Plank descendants, causing the area to be known as Plank Row.

14- 345 W Prospect (1912, Cross Gambrel) George Hogreiver- When baseball was still a new sport, George "Stormy" Hogreiver joined Appleton's team in 1891 and saved the day in his first game. He became a minor league baseball hero and manager of the Appleton Papermakers.

15- 401 W Prospect (1913, Bungalow) Henry and Mary Kreiss- Henry Kreiss was elected County Judge in 1901.

16- 404 W Prospect (c. 1880)- This home appears on 1880s Sanborn Fire Maps possibly built as a tenement house. In 1897 George Potts, one of Appleton's young businessmen, and his wife, Mamie, (Bushnell) lived here. Potts patented machines for pasteurizing milk and cream and, at age thirty, was senior partner of Potts and Wood Creamery. Though the business continued into the twentieth century, the community was shocked when George died in 1898 after a five day illness. In 1910 Mathias and Mary Schmidt purchased the property using it for rental income and their retirement home.

17- 405 W Prospect (1913, Craftsman Bungalow) C & NW Railway agent Paul Hackbert- Originality of design, open gabled porch with exposed truss work and battered piers bring sophistication to this home, distinguishing it from other Appleton bungalows. Residents have reported the spirit of a former owner coming up the front steps, checking for mail and going in for lunch.

18- 410 W Prospect (1908, Colonial Revival) Frank and Mary Slatery- Pioneers Anna and John Smudde built a home here in the 1860s. John was possibly Appleton's first miller, and Anna ran a confectionery on College Avenue. In 1908, daughter Mary Slatery and her husband built this home. Several of their children maintained the family ice cream and candy business into the third generation. When the house was remodelled, a menu from the store was found in the walls. This history was returned to its hiding place. Another owner, Hubert Fassbender, founded Kauckana Club Cheese and is credited with the development of cold packed cheese.

19- 416 W Prospect (1925, Tudor) Neil Duffy-The Duffys ran Appleton's first motion picture theatre, the Elite (RE-light), located downtown. Neil's perfectionist personality is reflected in this home's construction details. A subsequent owner had family ties to Confederate General Robert E Lee.

Since the 1880s the grassy triangle at the northeast corner of Prospect and Walnut has hidden a large water reservoir for civic emergency.

20- 423 W Prospect (1891, Queen Anne) Cynthia Conkey- The Conkeys were among Appleton's first settlers, arriving in July 1849. Cynthia, a New Yorker, descended from pilgrim stock and her maternal grandfather fought in the Revolution. When husband Theodore volunteered in the Civil War, she spent two summers with him in the field. She has been described as an omnivorous reader, artist and expert horsewoman. When widowed, Mrs. Conkey had this home built following a design of local architect Phillip Dean. Daughter Helen Barnes and her husband

Lyman had moved into the original Conkey mansion at 433 W Prospect.

21- 427 W Prospect (1919, Prairie School) Henry and Alice Rossmessl-Henry Rossmessl followed a family tradition of working in the family shoe store founded by father Mathias and Uncle Joe and then becoming President of the Geo. Walter Brewing Company. Rudolph Konz, President of Konz Box and Lumber Company, also lived here.

22- 433 W Prospect (1849, Italianate) Theodore and Cynthia Conkey- Colonel Conkey was a founding father of Outagamie County, the city of Appleton and the Third Ward. He started west from New York in 1841 making a living as teacher of the first public schools in Fond du Lac and Madison. By 1845 he engaged in civil engineering, surveying much of his future home territory. In the early years of statehood, Conkey served terms in the Wisconsin State Senate and General Assembly. His Civil War duty in the west as colonel of the 3rd Wisconsin Cavalry brought engagements with Quantill's Raiders.

Theodore and wife Cynthia began building their pioneer mansion in 1849 on the high bank of the Fox next to a small deer park. They raised three children; Edward died at age twenty-eight, Alice (Appleton's, Alicia Park is named in her honor) married Alexander Reid, Appleton Post publisher and U.S. Ambassador to Ireland; Helen married Lyman E. Barnes. After her father's death in 1880, Helen's family moved into the mansion. Mr. Barnes served as Appleton's District Attorney and in 1892 won election to the United States Congress. What remains today at 433 is the center part of the original home. In 1914 the summer kitchen on the east was demolished and the west wing was moved "next door" to 503.

Prospect now crosses over Jackman St., originally part of a ravine that cut through the neighborhood between Walnut and State Streets. Portions of the ravine can still be seen. North Water and Jackman streets evolved from trails used by Native Americans and pioneers to portage around the treacherous Grand Chute rapids. The old wooden bridge over Jackman was the city's most damaged as runaway horse teams, spooked by loose planks, flung their rigs against the railings.

23- 527 W Prospect (1895, Front Gabled) Col. Nathan & Virginia Morgan-Colonel Morgan and Captain Henry Turner built and operated the Waverly Hotel, the first in the West "electrically lighted in every room." Selling his hotel interest, he turned to cattle dealing, then to politics, serving as city clerk and assessor.

24- 537 W Prospect (c. 1865, Italianate) Charles and Mina Pleming- In 1857 Frederick and Charles Fleming purchased the Genesee Flour Mill from Col. Conkey. The Third Ward business grew to an enormous capacity of 700 barrels per week. After war duty, Col. Conkey partnered with the Flemings. When Charles died, Conkey repurchased the mill. He sold it to Kimberly, Clark & Company in 1879.

25- 625 W Prospect (1882, Queen Anne) Henry and Crenora Rogers- Now known as Hearstone, this Victorian mansion was designed by Oshkosh architect William Walters. On September 30, 1882, it became the first residence in the world to be lighted from an Edison central hydroelectric station. The home is open year round for tours which include a visit to the Hydro-Electric Adventure Center. *National Register of Historic Places.*

SOUTH STATE STREET

Appleton claims the first commercially successful electric streetcar established in 1886. State Street is part of the original four-mile route.

26- 312 S State St. Mary's Catholic Church- Father Bondarel celebrated the first Catholic Mass in Appleton in 1848 at the home of Hippolyte Grignon. Irish immigrants formed that first congregation and by 1857 they organized the St. Mary parish, erecting a frame church in 1859. Architect and Third Ward resident Thomas O'Keefe (whose home is now gone) designed the present church and the cornerstone was laid in 1874. Massive windstorms in 1923 and 1930 toppled the south steeple, causing the parish to replace both steeples with the parapets seen today.

27- St. Joseph's Catholic Church- In 1867 a group of German Catholics separated from the St. Mary parish forming St. Joseph Catholic Church in the Third Ward on Lawrence Street. In 1872 the cornerstone was laid for their first brick church constructed by W. W. Wilson. Extensive remodeling in 1889 followed architect Schickel's plans.

28- 414-416 S State (1881, Italianate) John Tintinger- When built by Tintinger, these twin houses may have been Appleton's first duplex, joined together along a common back wall. In 1884 Andreas Kahlu, tailor, farmer and Civil War veteran, purchased the houses for retirement income. When the dwellings were sold separately in 1902, Grand Chute farmer John Hoh bought the south home and used the rental income to support his invalid daughter Helen. The houses were separated after 1913 to generate better rents, and, in 1926, Helen's sister Minnie Gehring acquired both. Though Minnie owned the homes for fifty years, she and Helen never lived here.

29- 505 S State (1913, American Foursquare) Louis and Augusta Wichman- For 50 years the George Putney homestead was located on the northeast quarter of this block. Louis Wichman bought lots 7, 8, and 9 from Putney's widow Dolly. Wichman's Furniture Store, with its gigantic time and temperature sign, was a well-known landmark to Valley residents.

30- 516 S State (1920, Bungalow) Johanna Hoch- Moved here in the 1970s from 515 Sixth St., this home is the only survivor of parking lot expansion.

31- 517 S State (1892, Cross Gabled) John and Libbie Baer- Ohio-born John Mason Baer was 16 when he fought in the Civil War. After suffering wounds at Vicksburg and Snaggy Point, he became a prisoner of war at Cheneyville, Ia. Back in Outagamie County, Captain Baer farmed in Black Creek and served as Magistrate, Supervisor, Registrar of Deeds and Chairman of the County Board. He was Appleton's Postmaster. Son John Jr. became a U. S. Congressman from North Dakota and a prominent cartoonist.

32- 523 S State (1868, Italianate) James and Sarah Tompkins- Pioneers from New York, the Tompkins farmed in Greenville before purchasing lots in this block in 1865. Tompkins founded the Empire Soap Company and manufacturing "an article which earned an excellent reputation far and wide." He built this home using "groat block," made of an experimental lime and gravel mixture. It survives today as a rare example of this construction. The Tompkins' daughters and granddaughters married the area's most eligible bachelors from business and industry, including Adelbert A. and Don C. Babcock and William Zuehlke, Sr., co-founder of Aid Association for Lutherans. In 1884, real estate and insurance tycoon B. T. Gilmore bought the house. Gilmore developed much of early Appleton's northside, then platted and created the town of Kimberly in 1886. *National Register of Historic Places.*

33- 603 S State (1930, Georgian Revival) Henry Gloudemans-Gloudemans and Roscoe Gage founded Appleton's largest, locally owned department store which flourished until the early 1980s.

34- 617 S State (1907, Colonial Revival) Peter and Mary Schmit- The Schmits retired from farming and built this home. Peter served as President of the Central Mutual Hail and Cyclone Insurance Company. Other former residents include Michael Lockey, entrepreneur, politician, and Outagamie County Sheriff, and the Peter Dohr family, residents for 77 years.

35- 707 S State (1891, Tudor Revival) Judge George Baldwin- Baldwin served as mayor of Chilton, County District Attorney and Senate Judge and was elected to the Wisconsin General Assembly and Senate. After moving to Appleton in 1885, he developed an extensive real estate business investing in and developing parts of the Dakotas, Michigan, Oregon, Washington and Wisconsin. The altar of St. Mary's Catholic Church is dedicated to the Judge. Sons Charles and George (621 W. Fourth St.) followed in their father's footsteps, managing the family's assets and practicing law. Descendants of Charles lived here until 1984.

WEST PROSPECT AVENUE

1- 213 W Prospect (pre-1870) Edward and Amanda West-In 1871 Mayor A.L. Smith and the citizens of Appleton presented pioneer West with a silver tea service for building the Grand Chute Island Canal which provided water power to develop city industry. In addition to his engineering contributions, West had the distinction of being the first public school teacher in Wisconsin Territory, located in the Village of Milwaukee. In 1931, prominent Appletonian William Schubert, Vice President and General Manager of the Wisconsin Michigan Power Company, moved into the home. The house had a direct line to the Power Company and its association with power has earned it the right to be called the "Power Company House."

2- 230 W Prospect (1884, Queen Anne) Henry and Emily Holbrook- Built for grain dealer Holbrook, by 1919 this home belonged to Joseph Koffend, Jr., Joseph, attorney and descendant of pioneers John and Anna Koffend, ran the family insurance business started in 1880.

3- 300 W Prospect, Thomas and Ophelia Brown-Yankee Thomas W. Brown came to Appleton in 1854 and opened a pump manufacturing business in 1863. The exact date of this house is not known, but it may be 1856, the year Brown is credited with erecting the city's first brick dwelling. His second wife Ophelia taught at and was a trustee of Lawrence University. In 1891 John Hart Whorton purchased the home for his daughter Eliza Powell and her husband. They began renting rooms in the 1920s, a tradition which continues today.

4- 312 W Prospect (1884, Front Gabled) Thomas Pearson- Though built for papermaker Thomas Pearson, members of the Bradford family have resided here since 1897. Artist Francis Scott Bradford studied painting in Europe and became a leading mural painter in this country. His work can still be viewed in the lobby of the Outagamie County Courthouse.

5- 315 W Prospect (1870, Italian Villa) John and Martha Whorton-Lumbermen John and William Whorton left New Brunswick bound for the Territory of "Westconsin" in 1850. After years in the lumber business, John helped organize the Fox River Paper Company in 1882, serving as Vice President and General Manager. As a major stockholder in the Commercial National Bank he became Vice President, then President. News was made when a runaway team of spirited horses cleared Whorton's iron fence with their wagon and came up against the house. *National Register of Historic Places*

6- 316 W Prospect (1880, Greek/Colonial Revival)- The families of Robert Mitchell, owner-operator of Mitchell Brothers' Clothing, County Clerk Albert Kasler and shoe store owner Oscar Kossmiesl were all early residents of the home.

7- 321 W Prospect (1902, Shingle) Raymond Bertschdy-Bookkeeper Bertschdy was the son of pioneer grocery and dry goods dealer Perry Bertschdy.

8- 324 W Prospect (1889, Queen Anne) Stables used by the mansions across Prospect were the only structures on this block until this home was built. Boot and shoe dealers James Ritchey and Peter Hoefel are the first documented residents. In 1901, Hoefels built next door at 331 State, where descendants still reside.

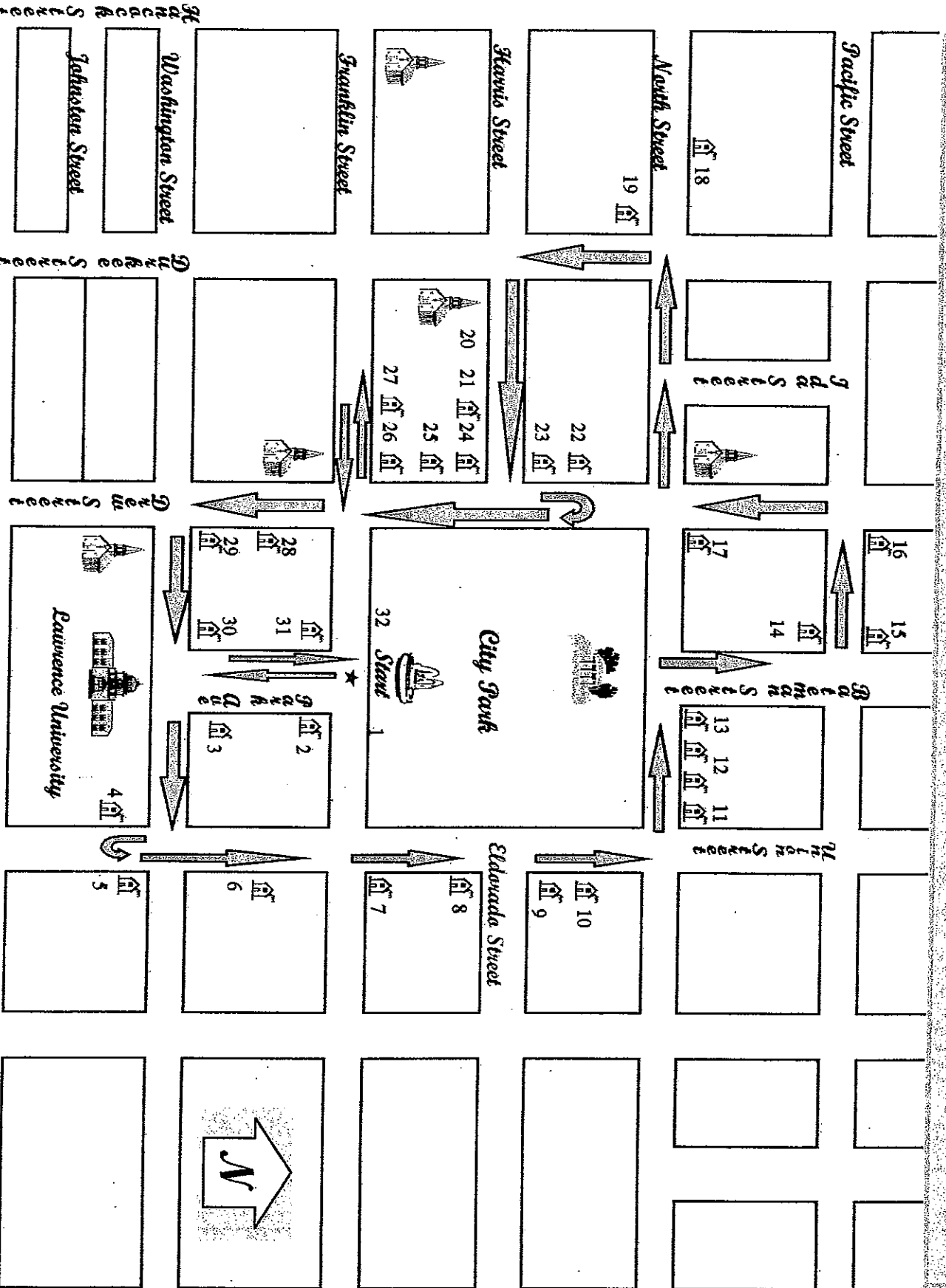
9- 325 W Prospect (1872, Italian Villa) Ephraim and Louise Goff- Designed by noted architect William Waters, this home featured a central observatory and east wing, both lost to remodeling. E.C. Goff served as Appleton's Mayor, President of the Appleton Gas Light Company and Commercial National Bank, and was a Civil War recruiter. A unique feature of the home's history is its 1912 use as a maternity hospital run by Dr. Maud Pratt.

10- 329 W Prospect (1910, Foursquare/Queen Anne) William and Frances Sheer-Appleton painter and sculptor William Sheer resided here almost 50 years. Trained as a church decorator by his father, his artistic talent was recognized throughout the United States. Many area churches contain examples of Sheer's work, notably St. Joseph's Catholic church in the Old Third Ward.

11- 330 W Prospect (1925, English Cottage) George Schommer-George's father Nicholas started a furniture and undertaking business in 1897. By dropping the furniture department in 1907, he created Appleton's first business exclusively devoted to undertaking. The

Appleton's City Park Historical Walking Tour

PRESENTED BY:
HISTORIC CITY PARK NEIGHBORHOOD ASSOCIATION



Appleton's City Park Historical Walking Tour

PRESENTED BY
HISTORIC CITY PARK NEIGHBORHOOD ASSOCIATION

1. City Park is Appleton's first park. This property was once part of Lawrence University's land holdings. The college sold several acres to Welcome Hyde in 1879 to help meet expenses. Welcome Hyde sold 8 acres of land to the city in 1882 for \$13,000. This 8 acres became what is now known as City Park. In June 1887, a bandstand was constructed in the pavilion style. Here, Saturday night concerts were held. In 1898 two deer were purchased for a modest "zoo" in a rustic enclosure in the northeast corner of the park. The year 1901 marked the construction of a fountain in the center of the park and a "drinking hydrant", (with cup provided!), next to the bandstand.

2. 224 N. Park, Queen Anne style home built by grain dealer Charles Mory, later owned by paper manufacturer H. Marshall

3. 216 N. Park, This Eastlake Style home was built by P.M. Conkey. He founded Conkey's Bookstore in 1896.

4. 127 N. Union, Stick style of the 1890's, home of Thomas Patten of Patten Paper Co.

5. 122 N. Union, On the third floor is the attic where Zoe Cloak offered acting lessons in the 1950's. This led to the founding of Appleton's Attic Theater.

6. 228 N. Union, Built in the Craftsman Style. Formerly the rectory of All Saints Episcopal Church and before that the home of Lawrence University music dean Carl Waterman.

||

7. 304 N. Union, Built in 1908 and designed by Chicago architect H.H. Waterman. Mr. Waterman's design combined the Prairie and Craftsman Styles. He also designed Riverside Chapel, Lawrence University's Brokaw Hall and 229 N. Park Ave. The H.C. Humphrey family lived in this home from 1908 to 1928. Humphrey was the Vice President of G.W. Jones Lumber Company of Appleton. This was also the childhood home of Mayor J. Sutherland. The Sutherland family lived here for approximately 60 years.

8. 320 N. Union, Built in 1905, the home was referred to as the "Wedding House". It was built for Herman and Edna Heckert the year they were married. The Louis Stenger family bought the house in 1925 and lived there for 60 years.

9. 408 N. Union/602 E. Eldorado, Built in the 1890's by the shoe company's Herman Heckert, later the home of jolly butcher Louis Bonini.

10. 414 N. Union, This home started out as a small Victorian house. As newlyweds, Herman G. Saecker and Anna Margaret Engler, daughter of one of the areas pioneer families, purchased the home in 1890 from J.W. Cahoon. In 1907, the Saeckers extensively remodeled and expanded with the help of W.W. Delong and cabinetmaker Jim Sherry. Herman Sacker founded the Appleton Machine Company in 1886 and Scoldy Lox Hair Pin Co. In 1919.

11. 524 E. North St, Built about 1908 in the Eclectic Resurgence Style. This home is affectionately known as the "Castle House" by many and was built by Asa F. Tuttle. Mr. Tuttle had three wives, Eva, Nellie and Rose. His Company, Tuttle Press, was the very first to produce disposable paper napkins.

12. 510 / 516 E. North St., The twin houses were built around the year 1908 for two sisters, Eva Hammel and Anna Kahn, by their father. The husbands of the two sisters ran the Appleton Toy and Furniture Company, which later became part of the Playskool Company in 1945. Local operations were closed down in the 1960's. Before the homes were built, the land was used as a circus ground and as the practice field for the Lawrence University football team. Small toys used as prizes at the circus games are still being dug up in gardens today!

13. 504 E. North, Built in 1899 for Dr. Victor Marshall, a founder of St. Elizabeth's Hospital.

Bateman Street is named after the gentleman who was the Mayor of Appleton during the Civil War. Mr. Bateman had extensive land holdings in the Bateman Street area

14. 425 E. Pacific, Georgian Revival built around 1900, This home is architecturally significant because it is constructed of concrete block. This method began in Wisconsin.
15. 424 E. Pacific, Built about 1860 by Robert McMillen. He was president of Fox River Paper Company of Appleton, but is best known for his contributions to the lumbering business in Oshkosh. Reverend A.J. Mead, a Methodist minister and circuit preacher in N.E. Wisconsin, purchased the house in about 1863. Three generations of the Mead family made their home here.
16. 402 E. Pacific, Gothic Style Queen Anne built in 1885. It was designed by W.W. DeLong. Six look-a-likes were built, including 220 S. Morrison and 318 E. Franklin (Franklin Street Inn). The home was built for Outagamie County's first Municipal judge, Thomas Ryan. Judge Ryan wrote *The History of Outagamie County*.
17. 402 E. North, Richardson Romanesque Style built in the early 1900's. This home was built for the Geenen sisters, Dina, Minnie, and Ana. The three owned and operated Geenen's Department Store, which was located at the present site of Younkers in the Avenue Mall. They ran the store from 1898 to 1960.
18. 216 E. North. Built in 1895. This was the home of Edna Ferber when she wrote the book *Dawn of O'Hara* in 1909. She is one of Appleton's most famous citizens. Ms. Ferber began her career as a reporter for the *Appleton Evening Crescent* and later became a reporter for the *Milwaukee Journal*. She then moved on to become fiction editor of *Everybody's Magazine*. She wrote of her life in Appleton in the autobiography *A Peculiar Treasure*.
19. 417 N. Durkee, Stick Style home built in 1883. This home was originally owned by Mayor David Hammel, who also owned a livery and sale stable. The Hammels were good friends of Edna Ferber's family and she included the Hammels in her autobiography. It is rumored that President Taft visited in 1910 when E.A. Edwards, a Republican Banker, owned the home.
20. 320 N. Durkee, Built in 1883. Temple Zion was the first synagogue building in Appleton. It was planned by Harry Houdini's father, Rabbi Mayer Weiss. Appleton native Edna Ferber was a member of this congregation. Temple Zion and the schoolhouse in the back were entered on the National Register of Historic Place in 1978. The building currently houses Ron Wahl's Organ Workshop.

21. 325 E. Harris, Neo-Colonialized Victorian, built in 1905. This home was built by Dr. Brooks. It has been restored to its current beauty by Robert McKenney and Terry Irwin. Mr. McKenny's family ties in the neighborhood go back to about 1886.

22. 413 N. Drew, Small Farmhouse Type, built in the 1870's. It was the early 1880's home of drayman Leonard Bushey, later the home of music professors Clyde and Miriam Duncan.

23. 405 N. Drew. Built in 1889. This house was built by J.H. Pfenning, an industrialist who owned a mill in the flats. Herman Erb, an early pioneer of Appleton, later owned the home. He was one of the founders of the First National Bank of Appleton. Mr. Erb was the father of Herman Erb Jr., a former mayor of Appleton. Herman Erb Jr. was the youngest man ever elected mayor. He served three one-year terms.

24. 319 N. Drew, This was Edna Ferber's first Appleton home. Her family rented it in 1897.

25. 315 N. Drew. Midwest Type with Federal feel, built about 1860. Has belonged to the family of pioneer lumber dealer Allen E. Davis since the 1860's.

26. 303 N. Drew, Queen Anne Style built in 1900. The home was built on the site of the "Pest House", Appleton's Pioneer Prescott Hospital.

27. 318 E. Franklin, Gothic Style Queen Anne built in 1898. It was built by William R. Rhodes, who had a grocery store on Oneida Street. As previously mentioned, it is one of six look-a-like homes designed by architect W.W. Delong. Currently it a Victorian Bed and Breakfast, (The Franklin Street Inn), owned by Ron and Beth Van Deraa.

28. 224 N. Drew, Home of early Appleton photographer William Ross, later, the Alden B. Johnston home.

29. 402 E. Washington, Late Picturesque Style built in 1883. It was the home of James Wood of Potts-Wood Creamery.

30. 410 E. Washington, Home of druggist William Montgomery, visited by Houdini. It later became the childhood home of ventriloquist Bob Neller.

31. 229 N. Park, Tudor Revival Style built in 1901. The home was built by George W. Jones and included seven working fireplaces and a ballroom. Mr. Jones was involved in real estate and had extensive holdings in the Fox Valley. He was a supporter of the first library in Appleton and gave money to start libraries in almost every town in Outagamie County. He donated land to the city for a park, which now bears his name. He married 3 times, each time to a Sackett sister. From 1947 to 1955 the building was a Lawrence University dorm. From 1956 to the present it has been Lawrence University President's House.

32. City Park Fountain, dedicated August 4, 1996. Nationally known sculptor and Appleton native, Dallas Anderson, created the bronze sculpture in the center of the fountain. He named it Ring Dance. The sculpture depicts a unique but very old game played by children of the Bushman tribes in the Kalahari Desert. To play the game, children link one of their legs with each other to form a circle and then hop in rhythm without arm support as they sing. The six children who modeled for the sculpture were Amy Angha, Laura Curler, Joshua Hanaman, Robert Koehler, Ryan Leath and Emily Pourcian. Anderson also created a sculpture for Neenah's Riverside Park called Playing in the Rain. The sculpture cost \$483,000 and was privately funded. The City Park and Recreation Department coordinated the construction of a new shelter to coincide with the completion of the fountain/sculpture Ring Dance. It is a Victorian-style utility building consisting of a refreshment stand, rest rooms, recreation storage room and porch.

In a way, the sculpture in the fountain depicts what the Historic City Park Neighborhood Association hopes to accomplish. The Ring Dance sculpture depicts an ancient game, which has been passed down through the generations. It connects the past with present and the future. The sculpture helps to pass the game on through the generations and preserves the game and it's history for all to enjoy and appreciate as an object of beauty. The City Park Neighborhood Association hopes to preserve and document the beauty and history of our City Park neighborhood to pass on to future generations.

The following are the mission statement and goals for the Historic City Park Neighborhood Association.

Mission Statement

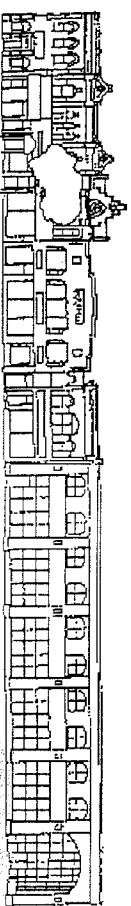
Recognize, preserve and promote Appleton's Historic City Park architecture, sites and history for all of Appleton's future generations to enjoy.

Goals

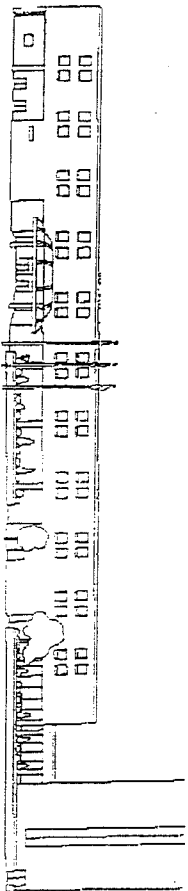
1. Foster neighborhood and community pride.
2. Encourage and recognize homeowner's efforts to improve and maintain property.
3. Create a neighborhood network for dissemination of information and support protection and enhancement preservation efforts in the City Park neighborhood.
4. Promote projects, activities and education that will further preservation in the City Park neighborhood.
5. Encourage and support community efforts to protect and promote their history for the benefit of its residents.

For more information please write:

Historic City Park Neighborhood Association
424 East Pacific Street
Appleton, Wisconsin 54911



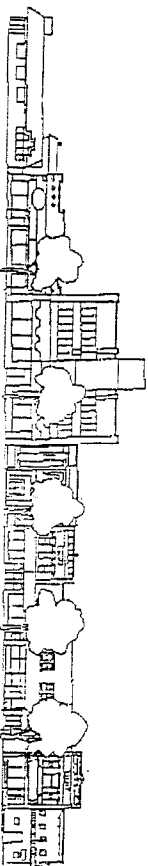
- 201 W. College**
Built - 1871
Architect - Williams Waters
Style - Italianate
Keystoned windows with window hoods, strong cornice, brick pilasters.
Site of original 1st National Bank, vault still visible.
- 203 205 W. College**
Built - 1871
Architect -
Style - Victorian Commercial
Builder - Herman Bissig
National Register of Historic Places
- 207 W. College**
Built - 1885
Architect - Charles Howe
Style - Flemish Revival with 2nd Empire Mansard Roof
Builder - Gerhardt Kamps
National Register of Historic Places
Original use - Harness shop
- 211 W. College**
Built - 1930
Architect - James E. Larson
Style - Art Deco
Builder - Albright Construction (renovation)
Original use - Gibson Auto Exchange, owner Alenor Gibson
Notable features- original facade including garage door. Black Carrera glass, and use of pineapple - welcome symbol. Historic pictures on display in restaurant.
- 215 W. College**
Built - 1883
Architect - William Waters
Style - Victorian Commercial
Builder - John Nicholas
Original use - Farmer's Hotel
Excellent example of Victorian commercial building. Pronounced cornice with Queen Anne detailing in upper caps. Windowhoods are ornate with decorative flower motif. Original hotel burned down in 1879, but was quickly rebuilt in same year.
- 221 W. College**
Style - Contemporary
New construction, very nice elements in it's design. Rhythm of windows with keystone.
- 2nd floor housed Appleton Post.**
note lion heads high on the facade represent "the roar of truth."
- Notable features keystones with -
curved flowers and cornice.



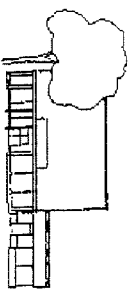
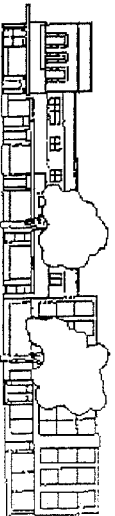
300 W. College
Paper Valley Hotel



- 409 W. College**
Style - Victorian Commercial
Upper floors illustrate of cornice with brackets, Gothic peak with elements of Queen Anne style.
- 411 413 W. College**
Style - Late 1920's commercial building
Cornice relatively non-descript. Blue Carrera glass, window capstones, rusticated brick and simple decoration.



- 511 W. College**
Style - Prairie Style
Uses the diamond motif in cornice and some stone work on either side of columns.
- 513 517 W. College**
Style - Modern
Well known years ago for the large clock on middle panel, clock was designed by Tom Dietrich for Wichman Furniture Store.
- 519 W. College**
Built - 1910
Style - Neo Classical
Original use - Outagamie County Bank
Ionic square columns, blanded front terra cotta decorative work called swags, also fin above window.
- 523 W. College**
Style - Victorian Commercial
Stonework above windows all one piece of stone. Cornice has both dentils and brackets and a pediment.
- 531 W. College**
Style - Victorian Commercial
Red brick, rusticated capstones, cornice with a pediment, but illustrates an earlier 1940's infill of windows with glass block.

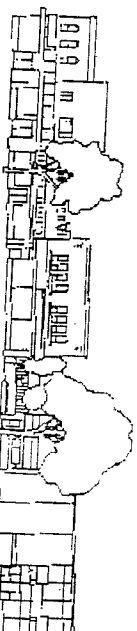


- 601 W. College**
Style - Modern
Brick with terra cotta decoration, rosettes near entrance, windows framed in stone.
- 613 W. College**
Style - Contemporary
Striking use of wood and glass with pebbled stone. Good illustration of how Hoffer is plying their trade.
Hoffer was 1st type of home improvement company.
- 623 W. College**
Style - Modern
Metal sheath, low show windows. Was a hardware store.
- 603 W. College**
Style - Modern
Features are late 1940's with small windows in upper story. Maroon Carrera glass and show windows.

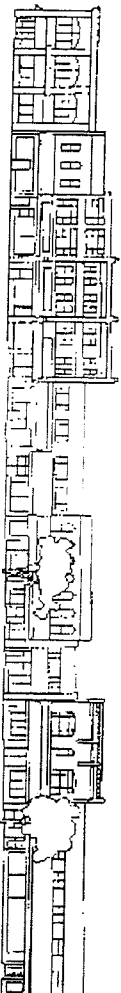
Observing Eye Tour of DOWNTOWN APPLETON

*When doing the tour it is best
to stand on the opposite side of the street*

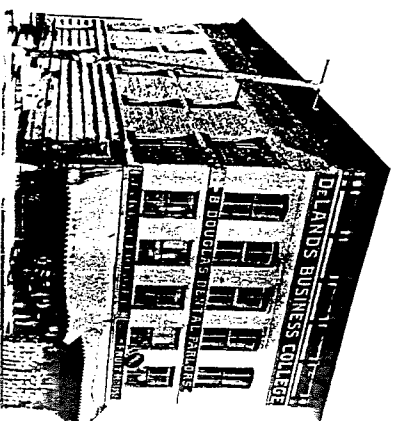
North side beginning at Drew Street



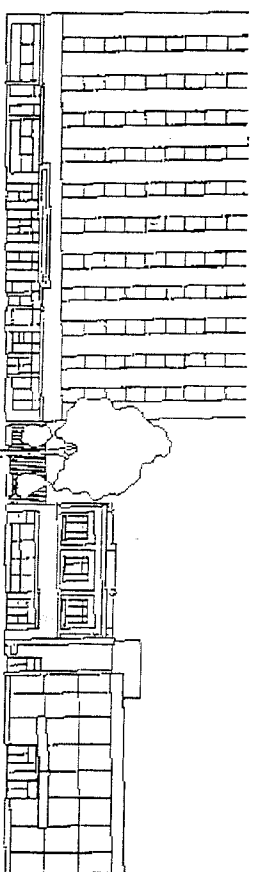
- 330 Outagamie County Historical Society**
Built - 1923
Architect - Leenhouts & Guthrie, Milwaukee
Style - Norman Revival
National Register of Historic Places
Original use - Masonic Temple, only building built by the Masonic order in Appleton.
OCHS moved into the building in 1985. Interesting interior and displays. Tom Dietrich stained glass windows in the Stekman Room. Houdini exhibit in Egyptian Room.



- 200 E. College**
Built - Original building 1882
Architect - Charles Howe
Style -
Builder - W.S. Werner and H.W. Meyer
Original use - Housed a German language paper, *Appleton Volkfreund*. (See Appendix)
W.A. Close - since 1956, fire destroyed building 1981
Built - 2nd building 1981
Architect - Zimmerman Design Group
Style - Contemporary design that includes historic elements, windows, columns and a new cornice to the top of the building, keeps in scale and rhythm with other buildings on this block.
- 222-224-226 Conkey's Bookstore**
Built - 222 [1859] 224-226 1892
Architect - 224-226 Phillip Dean
Style - 222 simple 224-226 Italianate
Builder - 224-226 Charles Partee (Partee Block)
Original use - 224-226 grocery store (See Appendix)
Notable features, 222 Cornice top, mosaic tile entry, 224-226 Cornice, tri-pane windows with transoms, entry.



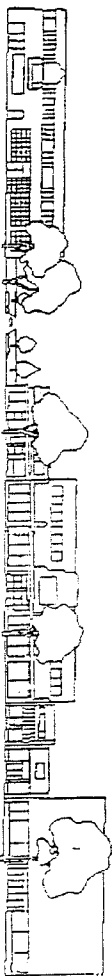
- Burrer King**
Built - 1857
Architect -
Style - Italianate
Original owner - C.G. Atkins
Original use - general store
The first three story building in the city and is one of the oldest buildings in Appleton. The Avenue Mall was built around it.
- Note strong cornice with brackets, simple windows, made from native stone from area. Built with limestone taken from the Fox/or Dale quarry. The use of stone slabs standing on edge along the Oneida Street exterior is another unusual feature.
- Refurbished in 1878 by Lewis Bates for Appleton's first dentist, Dr. Byron Douglas (Douglas was a cousin of the famous orator Stephen A. Douglas). Third floor was used for meetings of early social and religious groups, as headquarters of Deland's Business College in 1872.



- 218-220-222 Aid Association For Lutherans (AAL)**
Built - 1952, 1st part, 2nd addition dedicated 1966
Architect - East section, Crain & Ferguson, Boston
West section, Hoyle, Doran & Berry, Boston
Style - International
Builder - East section, Turner Co. New York City
West section, Oscar Boldt
Original use - Home office for AAL
Notable features are the red marble columns (pilasters), under windows. Yellow face brick, terra cotta, Wausau red granite. Metal panels under windows.
- Landmark building - tallest building in Appleton. Ten stories high, and 3rd skyscraper. (1st - Main Hall, 2nd - Zuelke Building).
- 200 Bank One**
Present Building
Built - [1963]
Architect -
Style - Contemporary
Interesting thing with this building since it faces south, it incorporates a glass sheet facade and allows for sunlight to be used for solar heat, which makes this a passive solar building.
- Original Building
Appleton's first theater with a stage was known as Berschey's Hall, located on the second floor of the Berschey Building. Herman Eib bought the building and remodeled it into a real opera house at the cost of \$10,000. The grand opening was held in December, 1882.

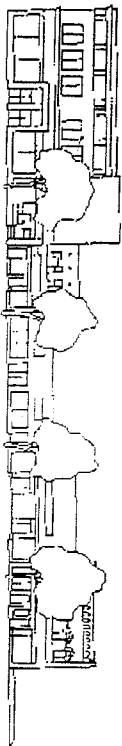
*Street drawings provided by Richard Masters of Appleton
Appleton Heritage Society prints a monthly newsletter,
for more information call 414-830-3430*

South side beginning at Drew Street



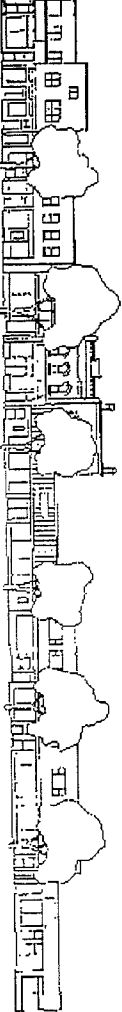
344 W. College
 Built - [1941]
 Architect -
 Style - Art Moderne
 Smooth, rounded corner, giving it a streamlined appearance. Was the Viking Theater for many years. Building has many levels below ground.

318 W. College
 Built - [1949]
 Architect -
 Style - Art Moderne
 Original use - Sears Store
 Note very streamlined, smooth building. Windows occur in bands. There is a long band right above store front in aluminum. Canopy.



426 W. College
 Built - 1905
 Architect -
 Style - Neo-Classical Building
 Was Gloudeman & Gage Department Store

It has some elements that are very descriptive of buildings constructed around 1905-1910, the upper cornice shows some column work and its Neo-Classical in it's tabature (engraved surface) which is the basic banding which runs across the top of the building.

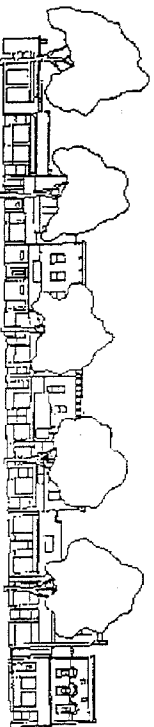


522 W. College
 Built - 1894
 Architect -

Style - Victorian Commercial
 Keystone windows with wooden caps, carved with abstract flowers, banding, use of terra cotta that runs through the top of building. Cornice, two square pilars on roof line. Sawtooth band of brickwork below cornice.

514 Coventry Glassworks
 Built -

Architect -
 Style - Modern
 Picturesque, white brick, show windows, metal slope overhang. Part of the building is Victorian with keystone windows, carved wooden hoods, cornice, three small windows. Crowns at corners.



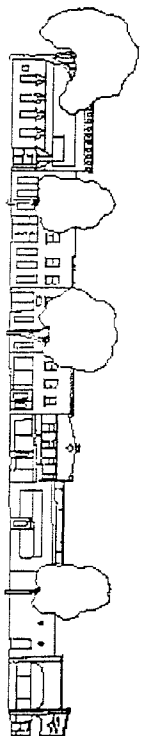
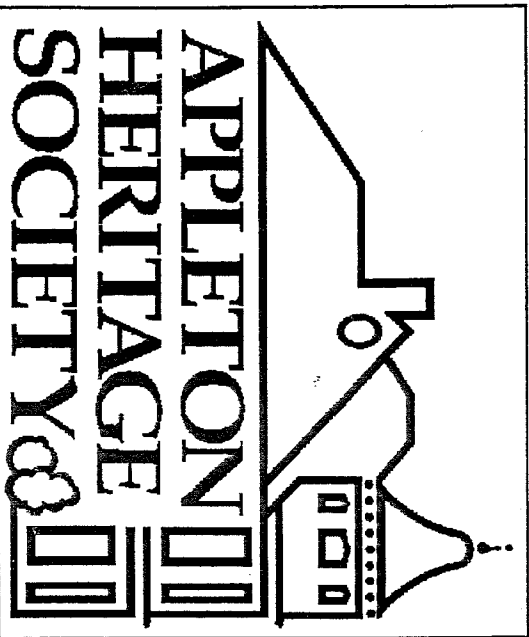
This block is know as the "flat iron" block, lower end of commercial district

604 W. College
 Built - 1880, destroyed by fire rebuilt 1942
 Architect -

Style - 1940s Commercial Building
 Represents a good example of 1940s building. windows bring you to the door. Geometric facade. Historical pictures of earlier buildings displayed in store.

600 W. College
 Built -

Architect -
 Style - Victorian Commercial
 Utilizes brickwork to the cornice. Cornice on this building is lost. Horizontal sawtooth brickwork between windows.



303 E. College
 Built - 1983
 Architect -
 Style - Contemporary
 Builder - Ross Construction
 Original use - Pat Ross Women's Apparel.
 Well designed building that fits in with the scale of other buildings on the block.



233 E. College
 Built - 1885
 Architect -
 Style - Second Empire Mansard
 Builder - Marcus Lyons
 Original use - cigar factory and store, also a candy manufacturing company. Building was fitted with electricity, gas and had an elevator. Remodeled in 1923 for Langstad, Inc.
 Upper cornice is made to look like roof, terraza entry. This is just a shell of the original elegant building. A bay window had been in the center of the upper floor, and crowning the top of the existing pediment was a flying pig.

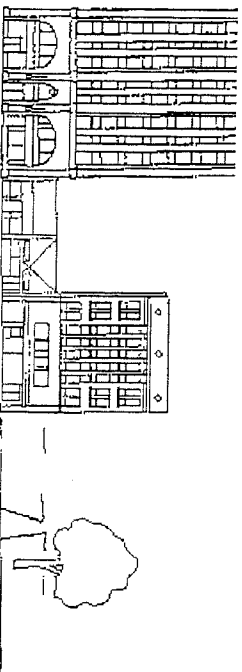


135 E. College
 Style - Contemporary
 Plaque indicates Edna Ferber's encounter with Harry Houdini.

129 127 E. College
 Built - 1873

Architect - William Walters
 Style - Gothic Revival
 Builder - John Worren & William Warner
 Original use - grocery store
 Facade is marked with 4 Ws representing original owners. Note keystone windows with transoms, cornice and gables.

121 E. College
 Built - 1871
 Style - Eclectic
 Green plastic tiles, unusual round windows on top story.



119 117 E. College
 Built 1874, remodeled 1928
 Style - Prairie Style
 Original use - restaurant & saloon
 Plaque "Houdini's father, Rabbi Samuel Weiss conducted 1st services upstairs in the 1870's."

107 E. College
 Built - 1873

Style - Prairie, remodeled 1918
 Original use - drug store & billiard parlor
 1st telephone exchange in 1878, served 25 customers.

103 E. College
 Built - 1882

Architect - Charles Hove
 Style - Italianate Commercial
 Builder - George Kriss
 Strong cornice and gable with polychromatic brick.

101 E. College
 Built - before 1871

Architect - Charles Hove
 Style - Italianate Commercial
 Builder - George Kriss
 Strong cornice and gable with polychromatic brick.
Houdini Plaza and Appleton Center
 Notable features of this area:
 Plaque indicating the site of the building where he lived as a child.
 Meamorphosis sculpture by Appleton artist Dick Wolter.
 Doug Hemming performed the Meamorphosis "trick" here a year after the dedication of the sculpture.

103 Zuecke Building
 Built - 1850's
 Rebuilt - 1881
 3rd building - 1930
 5 more floors added - 1930
 Style - Tudor Revival
 Original use - Insurance Services and Masonic Lodge.
 2nd building - Commercial Bank and Lodge.
 Mr. Zuecke was a banker by trade but loved music as seen by the decor throughout the building.

Interior: Marble, bronze elevator doors with open scenes, bronze lanterns, grill work, granite and corinthian pillars. Note the numerous ways I over Z appear throughout the inside on floors 1-5, and outside panels from 7 upward.

You have to go into the building to appreciate the beauty of it and see the fossils in the marble panel by the Barber Shop.

Aurora: 60 feet long and 10 feet high is a band of glass that subtly and swiftly changes color. It's a spectrum of sun-borne light. This is visible when you approach College Avenue from the south or Skyline Bridge.