

CHANGE ORDER NO. 2

CHANGE ORDER DATE OF ISSUANCE 3/26/2015 COMMENCEMENT OF CONTRACT TIME 11/14/2015

OWNER City of Appleton
 CONTRACTOR Pleper Electric, Inc.
 PROJECT PAC Fire Suppression and Monitoring Project CONTRACT NO. 23-14
 ENGINEER Donohue & Associates

YOU ARE DIRECTED TO MAKE THE FOLLOWING CHANGES IN THE CONTRACT DOCUMENTS:

DESCRIPTION:

Furnish and install new differential pressure transmitter for the PAC silo baghouse, including wiring and conduit required to supply 4-20 mA output, high differential pressure digital alarm, and power.

REASON FOR CHANGE ORDER:

Owner request to install new pressure differential transmitter.

ATTACHMENTS:

Proposal from Pleper Electric dated March 24, 2015 and catalog cut for proposed DP transmitter.

CHANGE IN CONTRACT PRICE
Original Contract Price:
\$ <u>173,800</u>
Net Increase from previous Change Orders:
\$ <u>894.00</u>
Net Increase of this Change Order:
\$ <u>6,720.00</u>
Revised Contract Price:
\$ <u>181,414.00</u>

CHANGE IN CONTRACT TIMES
Original Contract Times: (days or dates)
Substantial Completion: <u>03/1/2015</u>
Ready for Final Payment: <u>04/01/2015</u>
Net increase (decrease) from previous Change Orders: (days)
Substantial Completion: <u>0</u>
Ready for Final Payment: <u>0</u>
Net increase (decrease) of this Change Order: (days)
Substantial Completion: <u>0</u>
Ready for Final Payment: <u>0</u>
Revised Contract Times: (days or dates)
Substantial Completion: <u>03/1/2015</u>
Ready for Final Payment: <u>04/01/2015</u>

CONTRACTOR agrees that this Change Order includes any and all costs associated with or resulting from the change ordered herein, including all impacts, delays, and accelerated costs. Other than the dollar amount and time allowance listed above, there shall be no other dollar or time compensation as a result of this Change Order.

THIS DOCUMENT SHALL BECOME AN AMENDMENT TO THE CONTRACT AND ALL STIPULATIONS AND COVENANTS OF THE CONTRACT SHALL APPLY HERETO.

RECOMMENDED:
 By: [Signature]
 ENGINEER (signature)

APPROVED:
 By: [Signature]
 OWNER (signature)

ACCEPTED:
 By: [Signature]
 CONTRACTOR (signature)

Date: 3-26-15

Date: 3/27/15

Date: 3/30/15



CHANGE ORDER SUMMARY

Donohue & Associates	JOB NAME: Applaton WTF PAC
	CHANGE ORDER NUMBER: 2
	REVISION NUMBER:
	DATE: 3/24/2015
	JOB NO: 14168
ATTENTION: Larry Krause	CONTRACT NO: 4466-16050
	AMOUNT OF C/O: \$6,720

REGARDING YOUR REQUEST FOR QUOTATION:
 Price for adding new 0-10" WC differential pressure transmitter to PAC Silo baghouse. New flange to be welded to baghouse for installation of DP transmitter. HMI and PLC programming to include DP reading and alarm/warning at HMI in PAC room.

SUMMARY:	A. LABOR		\$1,195
	B. MATERIALS		\$2,548
	C. DJE		\$0
	SBO: YES		
	SUBTOTAL		\$3,743
	OVERHEAD & PROFIT	15.00%	\$561
	D. SUBCONTRACTS		\$2,300
	OVERHEAD & PROFIT	5.00%	\$115
	SUBTOTAL		\$6,720
	BOND		\$0
	INSURANCE		\$0
	GRAND TOTAL		\$6,720

ADDITIONAL CALENDAR DAYS EXTENDED TO CONTRACT COMPLETION DATE: 0

THIS AMOUNT ONLY COVERS THE DIRECT COSTS IN LABOR, MATERIALS, SUBCONTRACTS AND EQUIPMENT NECESSARY TO EXECUTE THE CHANGED WORK DESCRIBED IN THE PROPOSAL AT THE PRESENT TIME. WE CANNOT ASSESS OR EVALUATE THE OVERALL IMPACT OF THE CHANGED WORK ON OUR ORIGINAL CONTRACT SCOPE OF WORK. WE THEREBY RESERVE OUR RIGHTS TO CLAIM FOR ANY INDIRECT COSTS WHICH MAY ARISE IN THE FUTURE AS A RESULT OF DELAYS TO THE WORK, OUT OF SEQUENCE WORK, INEFFICIENCIES, EXTENDED CONTRACT COMPLETION, LABOR AND MATERIAL ESCALATION AND/OR ACCELERATION AND EXTENDED WARRANTIES.

This price is valid for 14 days.

This form was approved:

Appleton WTF PAC	NUMBER 14168	2	DATE 24-Mar-15	REVISION
------------------	-----------------	---	-------------------	----------

A. LABOR

*SUPER INTENDENT	1 HRS @	\$89.70	TOTAL	\$89.70
** SUPERVISOR	2 HRS @	\$81.34	TOTAL	\$162.68
*** SAFETY	1 HRS @	\$79.29	TOTAL	\$79.29
ELECTRICIAN	12 HRS @	\$71.96	TOTAL	\$863.52
ESTIMATOR	0 HRS @	\$58.62	TOTAL	\$0.00
ENGINEER	0 HRS @	\$50.00	TOTAL	\$0.00
	@		TOTAL	\$0.00
	@		TOTAL	\$0.00
	@		TOTAL	\$0.00
TRAVEL	@		TOTAL	\$0.00
SUBSISTENCE	@		TOTAL	\$0.00
PREMIUM COSTS			TOTAL	\$0.00
			LABOR TOTAL	\$1,195.19

B. MATERIALS

MATERIAL PER "TAKE-OFF"		TOTAL	\$2,548
MISCELLANEOUS MATERIAL & WASTE	0.00%	TOTAL	\$0
		SUBTOTAL	\$2,548
FREIGHT AND HANDLING		TOTAL	\$0
SPECIAL EXPEDITING		TOTAL	\$0
SALES TAX	0.0%	TOTAL	\$0
		MATERIAL TOTAL	\$2,548

*SUPER INTENDENT - 6% OF TOTAL MAN HOURS
 ** SUPERVISOR - 12 % OF TOTAL MAN HOURS
 *** SAFETY - 3 % OF TOTAL MAN HOURS



Appleton WTF PAC	14168	2	24-Mar-15
------------------	-------	---	-----------

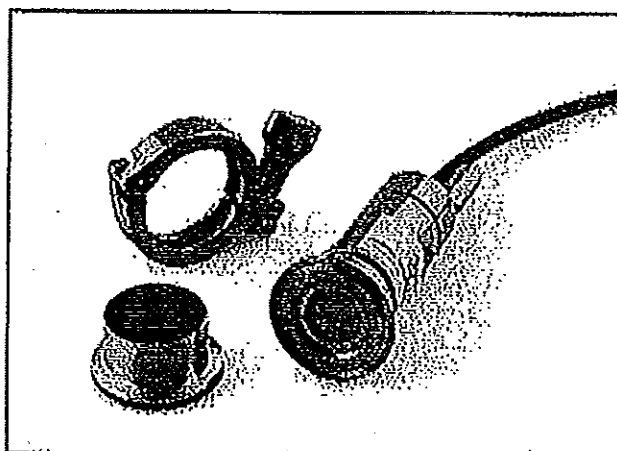
ACTIVITY	LABOR	QUANTITY	EACH	SUB-TOTAL	LABOR
TRENCH (4'x3' DEEP) DRIVE-DIG & BACKFILL, TEMP PATCH (100' PLUS) Par foot	LABOR			\$0.00	0.00
TRENCH (4'x3' DEEP) DRIVE-DIG & BACKFILL, TEMP PATCH (LESS THAN 100')	LABOR			\$0.00	0.00
TRENCH (4'x2' DEEP) GRASS-digging backfill	LABOR			\$0.00	0.00
BORING-UP TO 100 FEET-LOT PRICE	LABOR			\$0.00	0.00
BORING-OVER 100 FEET	LABOR			\$0.00	0.00
FUSING, PER FUSE	LABOR			\$0.00	0.00
CONCRETE PAD FOR TRANSFORMER-4'X6'-LOT PRICE	LABOR			\$0.00	0.00
RIGGING	LABOR			\$0.00	0.00
CORING-1 HOLE LOT PRICE-CONCOR	LABOR			\$0.00	0.00
POST AUGERING & INSTALLATION	LABOR			\$0.00	0.00
POLE BASE-24"	LABOR			\$0.00	0.00
POLE SETTING	LABOR			\$0.00	0.00
POLE REMOVAL	LABOR			\$0.00	0.00
POLE BASE REMOVAL	LABOR			\$0.00	0.00
UNLOAD POLES FROM TRUCK	LABOR			\$0.00	0.00
SAWCUTTING	LABOR			\$0.00	0.00
Quote from Pleper ACO-HMI and PLC programming	LABOR	1.00	\$800.00	\$800.00	0.00
Quote from JF Altern for welding flange in bag house	LABOR	1.00	\$1,500.00	\$1,500.00	0.00
	LABOR			\$0.00	0.00
	LABOR			\$0.00	0.00
	LABOR			\$0.00	0.00
	LABOR			\$0.00	0.00
TOTALS				\$2,300.00	0.00



The ProPressure DP 20T Non-Clogging transmitter is a heavy-duty, maintenance-free low pressure transmitter designed for fabric filters, cyclones, powder processes and low pressure particulate laden pipes. The unique flush/ported design enables configuration for either differential or static measurement. The ability to transmit accurate measurements below 10" W.C., over a broad temperature range without clogging concerns, makes the DP 20T the ideal replacement for mechanical/helical devices.

For differential measurements the flush diaphragm is mounted to the dirty or wet side of a process, such as the inlet of a dust collector, wet scrubber or mist eliminator. The port is used to route tubing to the cleaner side of the process such as the clean side of a dust collector or mist eliminator. For static measurement, such as in a powder conveying pipe, the port is simply vented to atmosphere.

Standard output is a 4-20mA signal for connection to a PLC, DCS, PC or chart recorder. For local display and relay control, a programmable panel mount LCD gauge is available (consult factory). The DP 20T can also be wired directly to FilterSense's dust emissions, filter leak detectors or mist monitors for local display and relay control integrated with particulate or mist monitoring.



The DP 20T uses a state-of-the-art micro machined sensing element with temperature compensation packaged in a heavy-duty stainless steel body. Changes in process pressure or vacuum applied to the diaphragm cause deflection in the sensing element. A precise, linear 4-20mA output signal proportional to the pressure or vacuum is produced by the circuitry.

- Solid-State micro machined sensing element
- Temperature compensated, operate at temps to 450F
- Accurate and repeatable 4-20mA output signal
- Heavy duty body prevents errors from mounting stress

- Ideal for baghouses, cartridge filters & cyclones
 - Replace photomechanical/helical devices that clog
 - Record differential pressure to meet EPA Regulations
 - Ensure reliable "pressure activated" filter cleaning
 - Integrate with ProFLOW dust emission monitors to optimize filter cake & maximize filtration efficiency
- Wet/Wet design for scrubbers & mist eliminators
- Static measurement for powder & solids flow pipes
- Intrinsically-safe version for hazardous locations
- 3A Sanitary rating for food & pharmaceutical industries

Non-clogging Transmitter

Made in USA

Configuration and Ranges

Configurations: Differential Wet/Wet
Static Wet/Wet
Ranges: 0 - 10" WC standard
other optional
Action: Positive at diaphragm
Negative at diaphragm
Bi-directional, optional
Proof Pressure: 60" WC for 0-10" WC range
Higher consult factory

Process Compatibility and Temperature

Sanitary Rating: 3-A #37-01, optional
Process Media: Wet/Wet design is
compatible with most
gases and fluids
Temperature: -20 to 280F, standard
-20 to 480F, optional

Accuracy and Performance

Total Error, Diaphragm at 200F: <1.6% FS
Total Error, Diaphragm at 280F: <3.0% FS
Based on zeroing at ambient. Zeroing at
temperature reduces error.
Response Time: 500 microseconds
Resolution: Infinite
Orientation Sensitivity: 0.03 ps/G

Electrical

Supply Voltage: +13 to 32VDC
Connection: 1/2 NPT exit with 5' cable
Load Impedance: 850 ohm at 32VDC
Output: 4-20mA
Intrinsic safety: Consult factory
Explosion-proof: Consult factory

Mechanical

Diaphragm: Polished 316L SS, other opt
Case Material: 304L SS, other optional
Fill Material: NEOBEE M-20
Housing: NEMA 4X equivalent
Mount: Tri-clamp flange
Port Connection: 7/16-20 UNF
Weight: 16 oz.

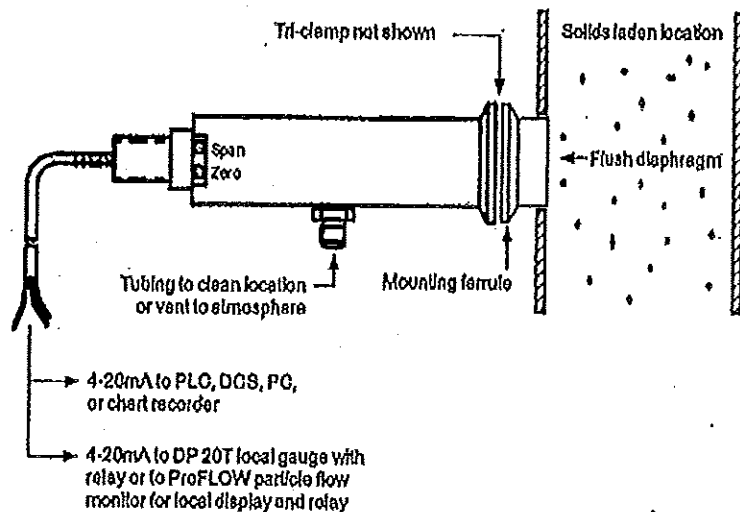
Installation Kit

Includes: Mounting ferrule
Tri-clamp & gasket
Differential port connectors
10' Differential port tubing

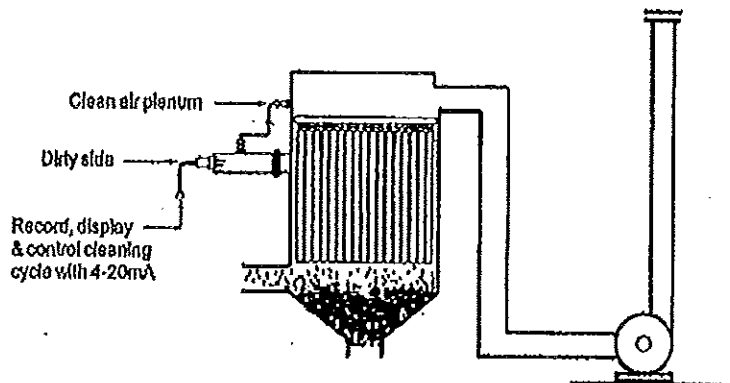
Specifications Subject To Change

PRESSURE FOR PARTICULATE PIPES & FILTERS

General



Dust Collector Application



FilterSense

www.babbittlevel.com

Tel: (713) 467-4438 Fax: (713) 467-8716