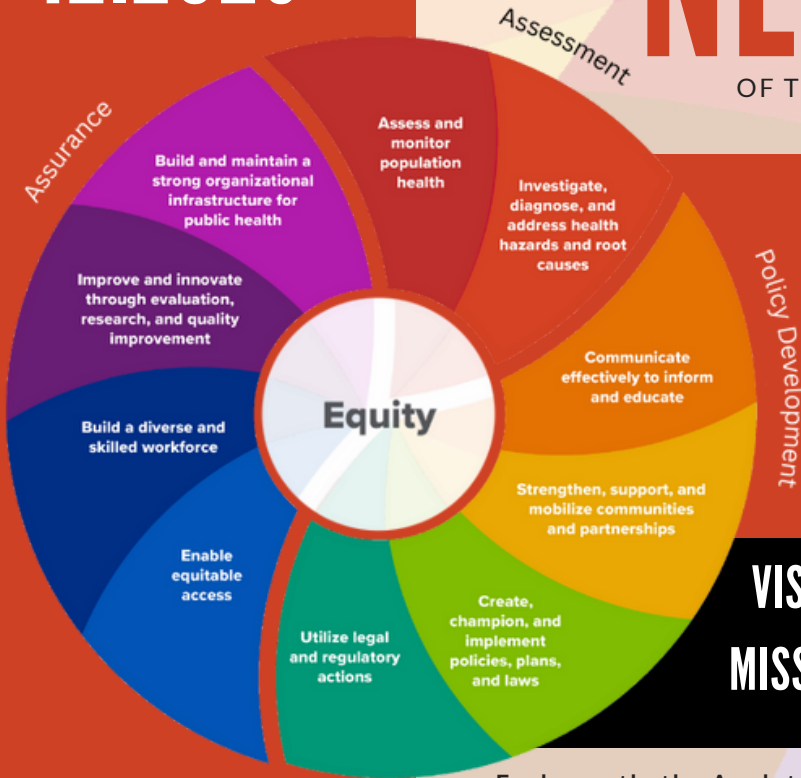


12.2023

# NEWSLETTER

OF THE APPLETON PUBLIC HEALTH DEPARTMENT



## IN THIS ISSUE:

Investigate, diagnose, and address hazards and root causes

Community Partner:  
N.E.W. Mental Health Connections

Meet Julie

**VISION:** Health for all, together.

**MISSION:** Facilitate equitable community wellbeing through education, health promotion, and response to public health needs.

## 10 ESSENTIAL PUBLIC HEALTH SERVICES

The 10 Essential Public Health Services provide a framework for public health to protect and promote the health of all people in all communities. To achieve equity, the Essential Public Health Services actively promote policies, systems, and overall community conditions that enable optimal health for all and seek to remove systemic and structural barriers that have resulted in health inequities. Such barriers include poverty, racism, gender discrimination, ableism, and other forms of oppression. Everyone should have a fair and just opportunity to achieve optimal health and well-being.

Each month, the Appleton Health Department Newsletter will feature stories about how we are achieving each of the 10 Essential Public Health Services. This month, we will focus on Essential Public Health Service #2: Investigate, diagnose, and address health problems and hazards affecting the population.

## WHAT WE ARE DOING

Winnebago County's Overdose Fatality Review (OFR) team meets with this tenet at its heart, "overdose deaths are preventable". On a monthly basis, local health departments, healthcare providers, law enforcement agencies, addiction treatment centers, and community organizations come together to review cases of people who lost their life to an overdose. Information about the decedent's life and death is shared by each organization, followed by discussion of risk factors and circumstances surrounding each decedent, examination of system issues related to addiction and substance use, and identification of opportunities to influence policy and practice to prevent future overdoses and overdose deaths.

One of the first recommendations made by Winnebago County's OFR team was the "We Heart You" campaign. "We Heart You" is a message to our community and a resource/referral card that connects people who have been impacted by substance use disorder to resources and services. Winnebago County has continued to build to "We Heart You" with the Solutions Peer Response Team, a We Heart You App, and a PSA short film.

Appleton Health Department Nurse, Julie Erickson, participates in both the Winnebago and Outagamie County OFR teams. Julie has partnered with the Appleton Area School District to equip school counselors, nurses, and support staff with information about substance use disorder and the intervention the "We Heart You" program can provide. Early outreach to middle school and high school students struggling with substance use helps them know that they are not alone. There are people who care about them and there is help.

# COMMUNITY PARTNERS



## N.E.W. MENTAL HEALTH CONNECTIONS

The N.E.W. Mental Health Connection (The Connection) undertakes initiatives to improve mental health care in Outagamie, Winnebago, and Calumet Counties using the Collective Impact framework. This model emphasizes collaboration across sectors to address complex social issues that single agencies cannot tackle alone. The Collective Impact model creates a common agenda, shares measurement practices, mutually reinforces activities, engages in continuous communication, and has a dedicated backbone organization, which The Connection serves as for mental health and suicide prevention initiatives in our tri-county region.



The Connection's core functions include guiding vision and strategy, supporting aligned activities, building public will, establishing shared measurement practices, advocating for aligned policy agendas, and mobilizing funding to support their goals. Early efforts focused on challenging entrenched mental models, such as misconceptions about suicide, depression, and access to mental health counseling.

The Connection utilizes Results-Based Accountability (RBA) to measure its impact. This approach begins with defining the desired outcomes for well-being and works backward to determine the means to achieve these ends. RBA focuses on the impact of services rather than just the quantity, shifting from counting how many people are served to how many lives are improved.

## RESOURCES

[CDC-10 Essential Public](#)

[Health Services -Full](#)

[Winnebago County OFR](#)

[We Heart You](#)

[N.E.W. Mental Health Connection](#)



## MEET JULIE



Julie Erickson, Psy. M., BSN, RN

Before joining the Appleton Health Department in 2019 Julie served the Appleton community in law enforcement and then as an emergency room nurse. Julie's work as a police officer was the catalyst for her passion for mental health. Emergency room nursing brought Julie even more experience with the developing mental health landscape. Julie wanted to make an impact in the environments and systems that lead people to need healthcare services so she turned to Public Health Nursing. "Public Health seeks to improve Health by improving the conditions in our community and society that shape it- it's not just the detection and prevention of diseases anymore. [Health] is mental health, physical health social health, and spiritual well-being."

Julie continues her nursing career in both hospital healthcare and Public Health, but she recharges by spending time outdoors with her family.

## BOARD OF HEALTH

## CALENDAR