

Legend

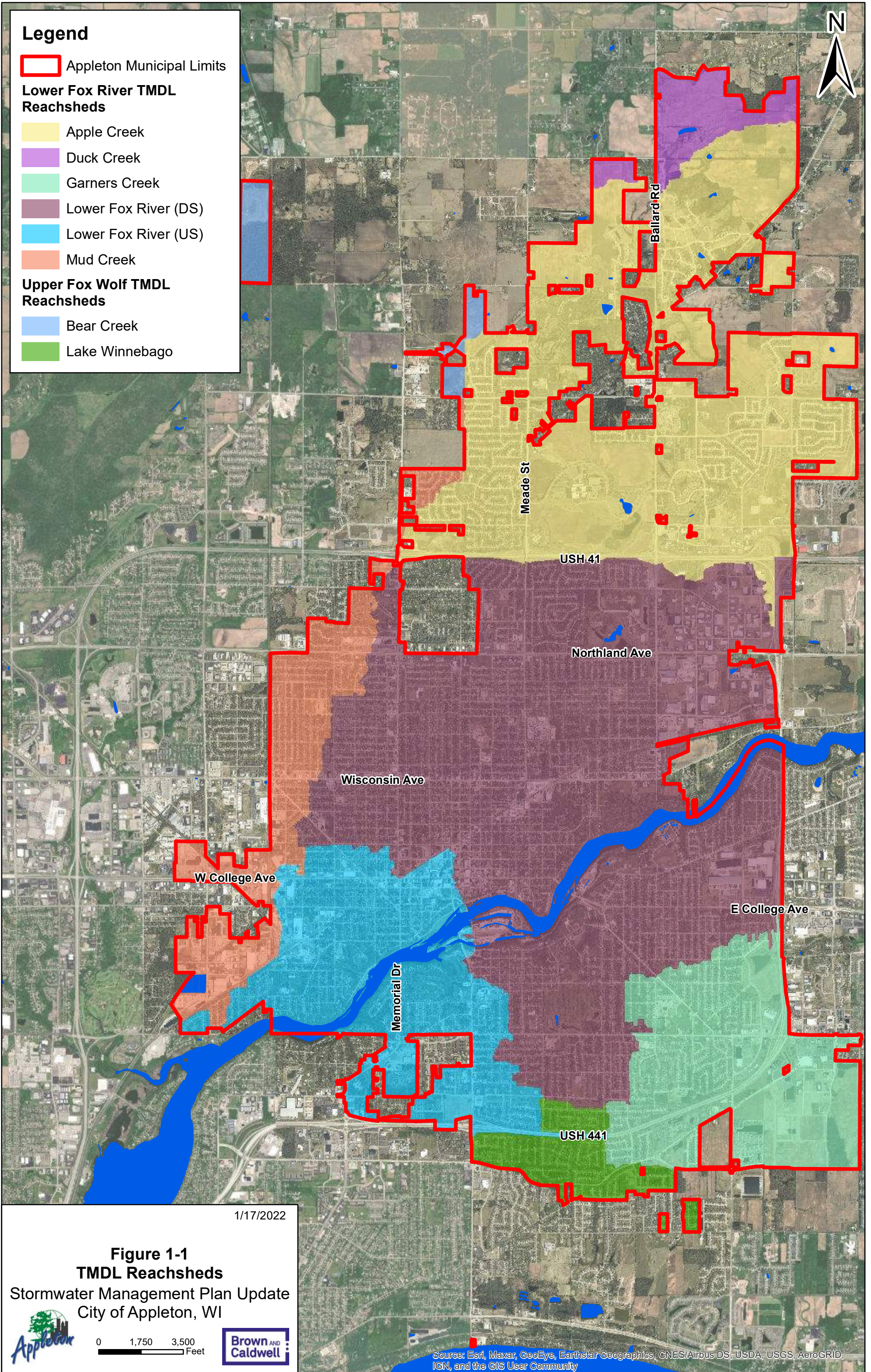
Appleton Municipal Limits

Lower Fox River TMDL Reachsheds

- Apple Creek
- Duck Creek
- Garners Creek
- Lower Fox River (DS)
- Lower Fox River (US)
- Mud Creek

Upper Fox Wolf TMDL Reachsheds

- Bear Creek
- Lake Winnebago



1/17/2022

**Figure 1-1
TMDL Reachsheds**

Stormwater Management Plan Update
City of Appleton, WI



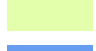


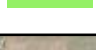


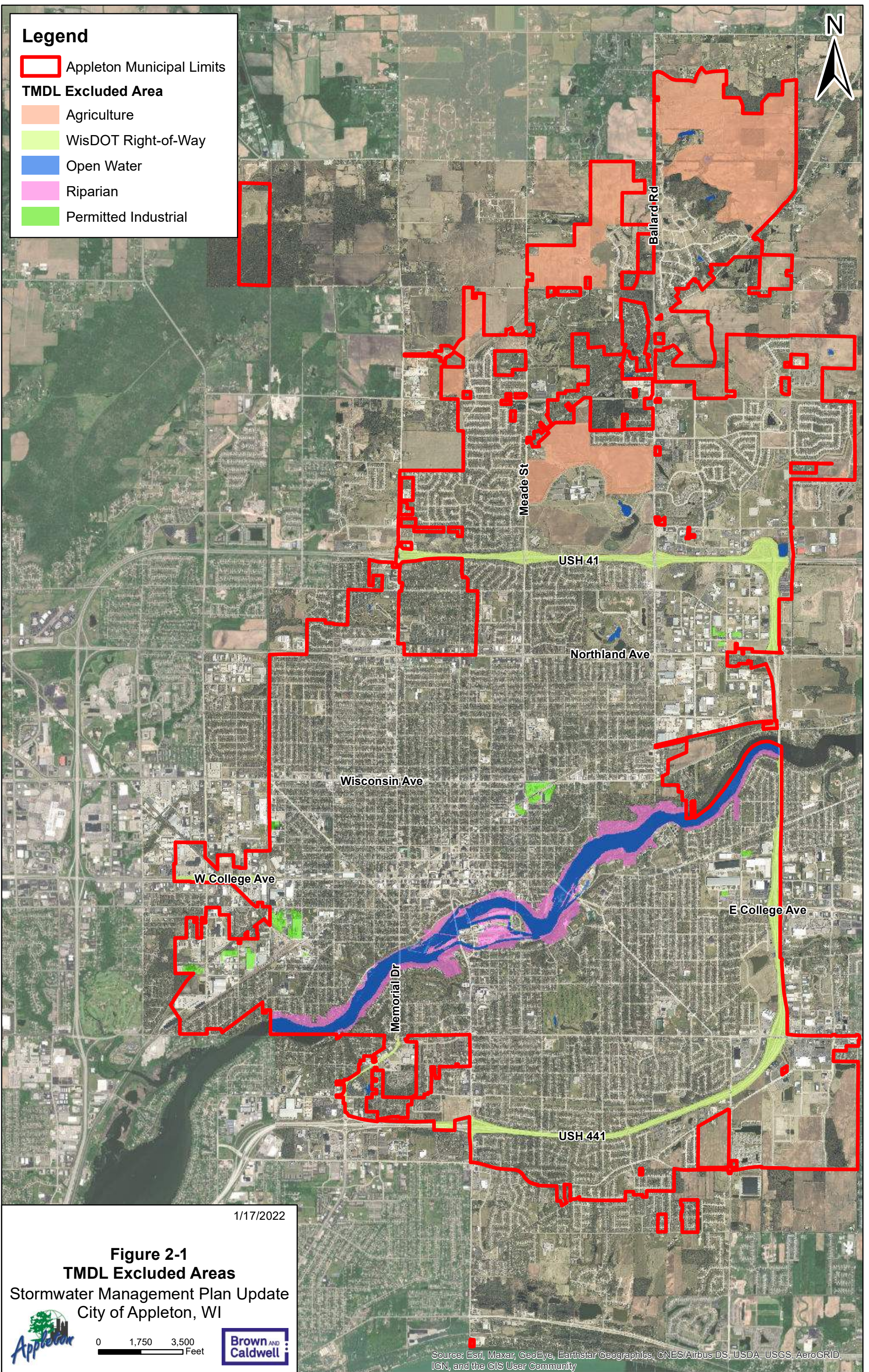
0 1,750 3,500
Feet



Source: Esri, Maxar, GeoEye, Earthstar Geographics, CNES/Airbus DS, USDA, USGS, AeroGRID, IGN, and the GIS User Community

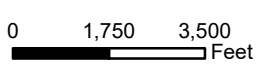
Legend

-  Appleton Municipal Limits
- TMDL Excluded Area**
-  Agriculture
-  WisDOT Right-of-Way
-  Open Water
-  Riparian
-  Permitted Industrial




1/17/2022

Figure 2-1
TMDL Excluded Areas
Stormwater Management Plan Update
City of Appleton, WI

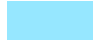








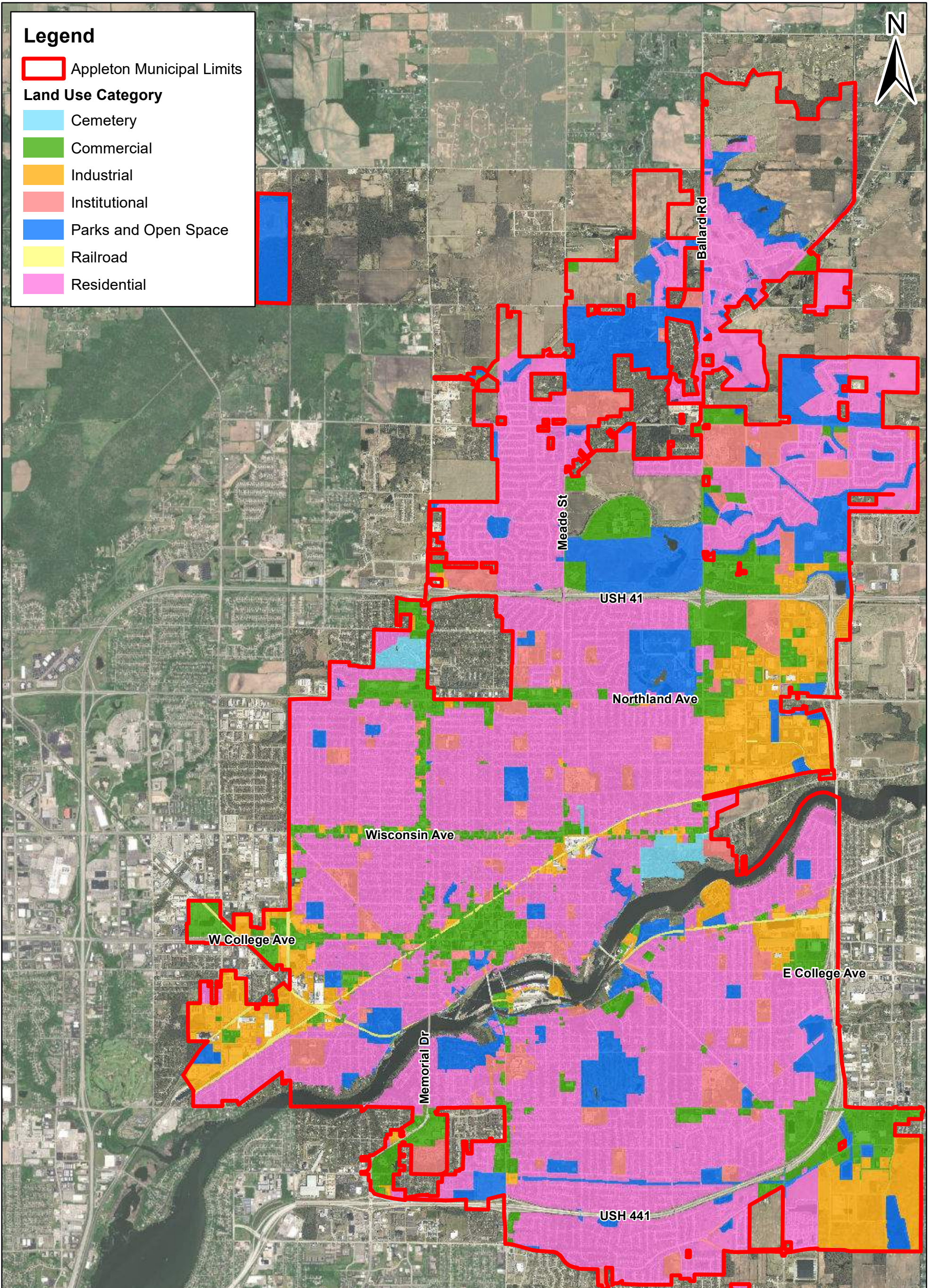
Source: Esri, Maxar, GeoEye, Earthstar Geographics, CNES/Airbus DS, USDA, USGS, AeroGRID, IGN, and the GIS User Community

Legend

 Appleton Municipal Limits

Land Use Category

-  Cemetery
-  Commercial
-  Industrial
-  Institutional
-  Parks and Open Space
-  Railroad
-  Residential



1/17/2022

Figure 2-2
TMDL Land Use Category
Stormwater Management Plan Update
City of Appleton, WI



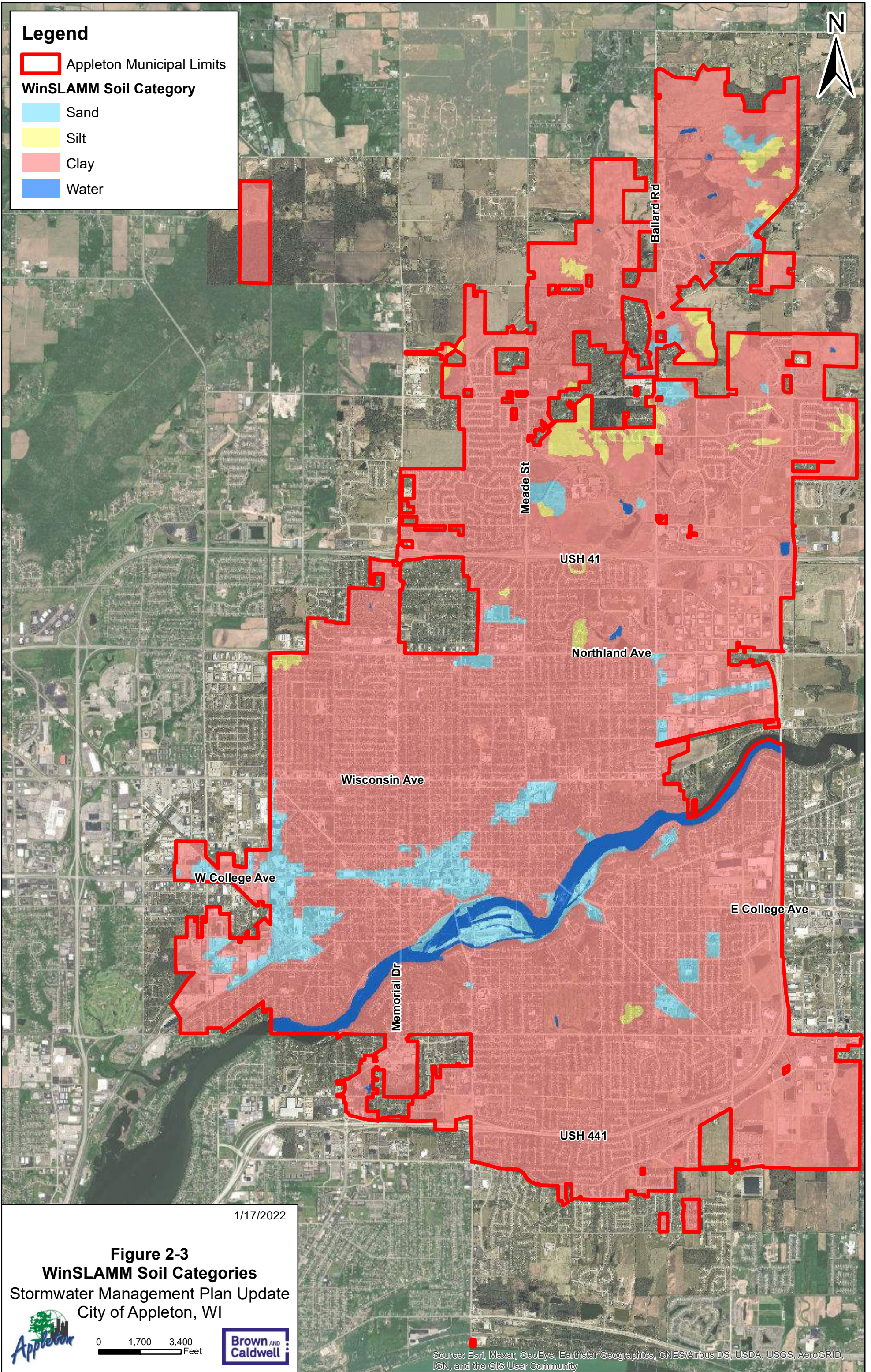
0 1,750 3,500
Feet



Source: Esri, Maxar, GeoEye, Earthstar Geographics, CNES/Airbus DS, USDA, USGS, AeroGRID, IGN, and the GIS User Community

Legend

- Appleton Municipal Limits
- WinSLAMM Soil Category**
- Sand
- Silt
- Clay
- Water



1/17/2022

Figure 2-3
WinSLAMM Soil Categories
Stormwater Management Plan Update
City of Appleton, WI



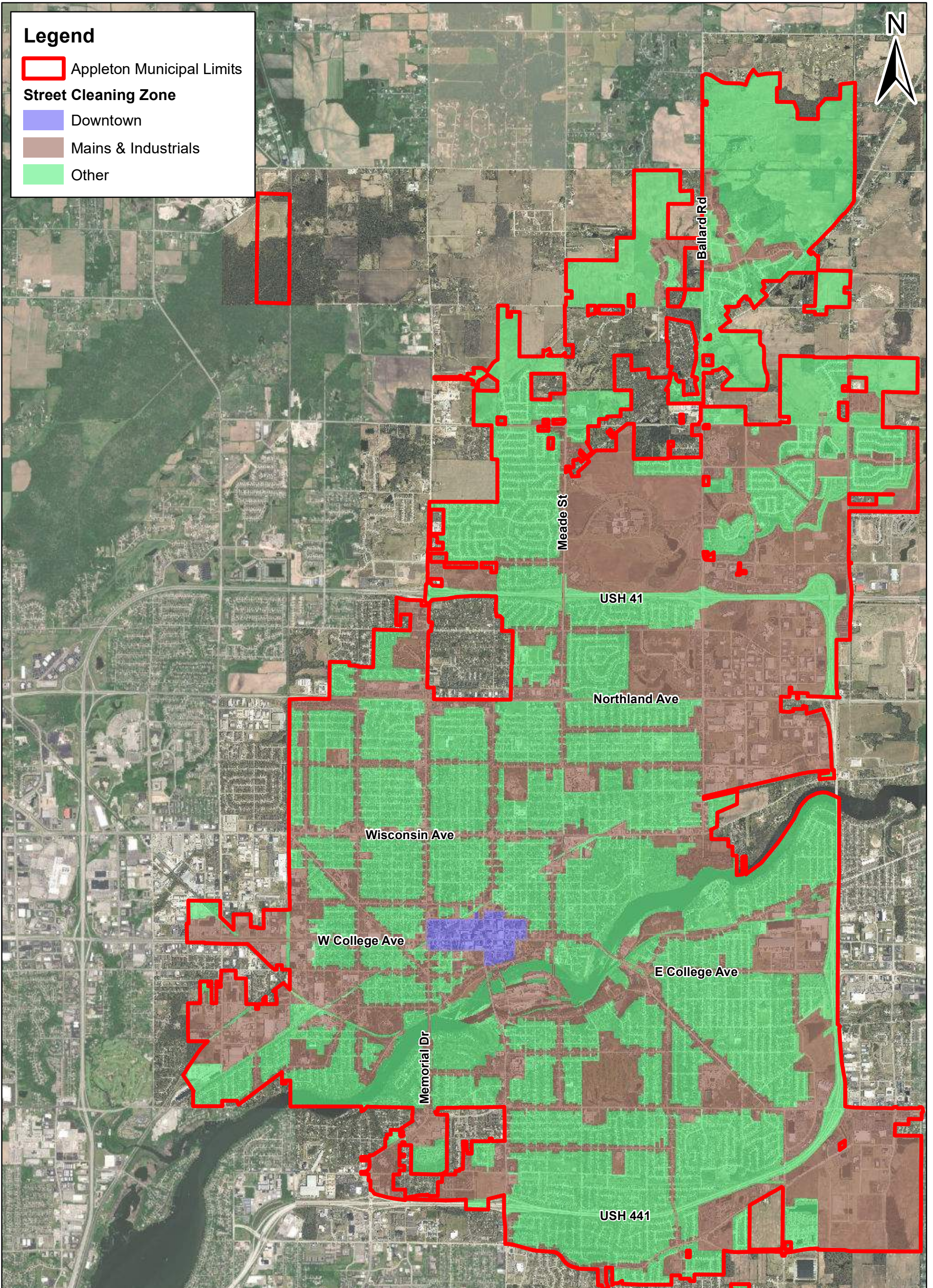
0 1,700 3,400
Feet



Source: Esri, Maxar, GeoEye, Earthstar Geographics, CNES/Airbus DS, USDA, USGS, AeroGRID, IGN, and the GIS User Community

Legend

- Appleton Municipal Limits
- Street Cleaning Zone**
- Downtown
- Mains & Industrials
- Other



1/17/2022

Figure 3-1
Street Cleaning Zones
Stormwater Management Plan Update
City of Appleton, WI



0 1,700 3,400
Feet



Source: Esri, Maxar, GeoEye, Earthstar Geographics, CNES/Airbus DS, USDA, USGS, AeroGRID, IGN, and the GIS User Community

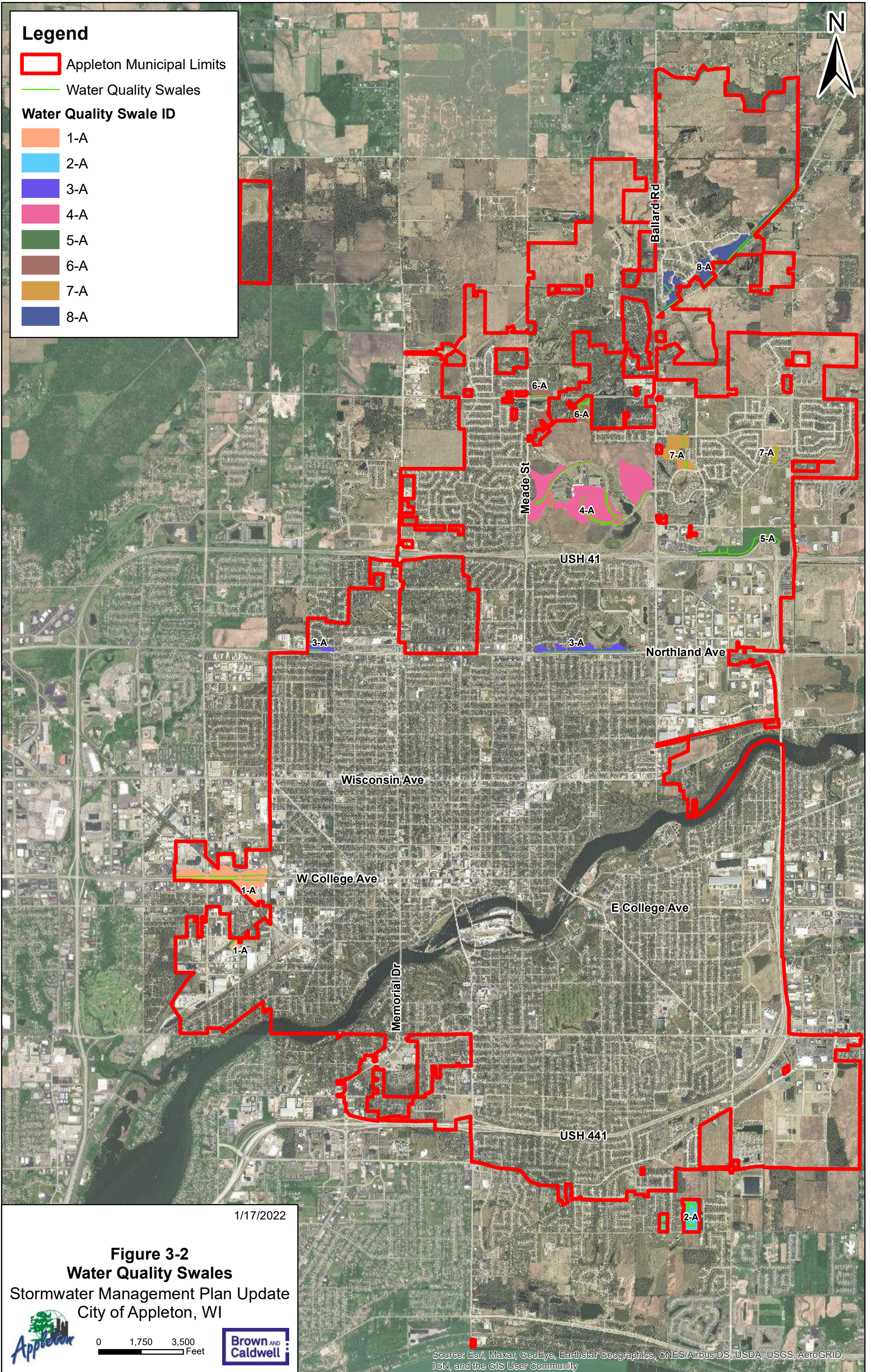
Legend

Appleton Municipal Limits

Water Quality Swales

Water Quality Swale ID

- 1-A
- 2-A
- 3-A
- 4-A
- 5-A
- 6-A
- 7-A
- 8-A



1/17/2022

**Figure 3-2
Water Quality Swales**

Stormwater Management Plan Update
City of Appleton, WI



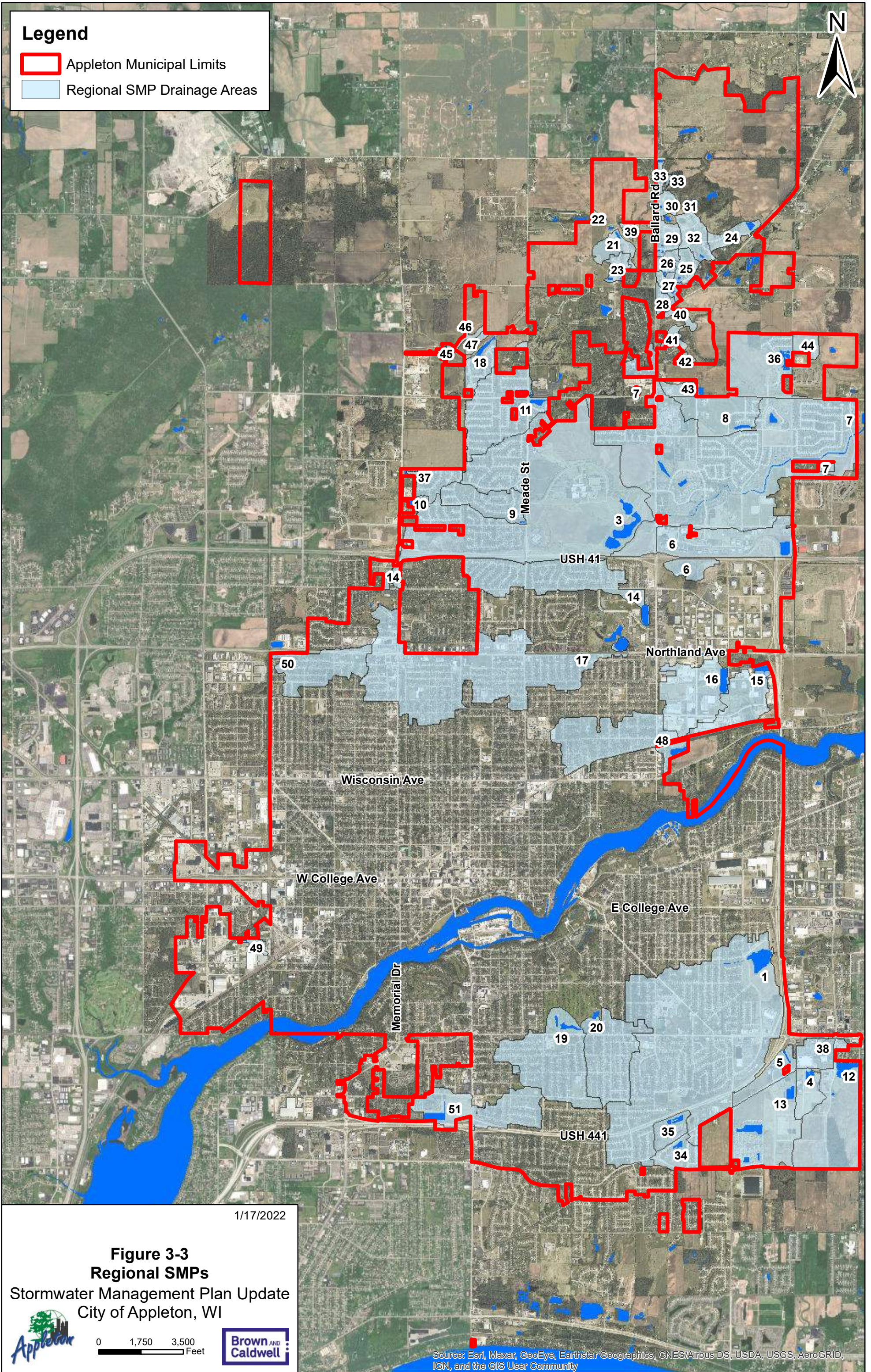
0 1,750 3,500
Feet



Source: Esri, Maxar, GeoEye, Earthstar Geographics, CNES/Airbus DS, USDA, USGS, AeroGRID, IGN, and the GIS User Community

Legend

- Appleton Municipal Limits
- Regional SMP Drainage Areas



1/17/2022

**Figure 3-3
Regional SMPs**

Stormwater Management Plan Update
City of Appleton, WI


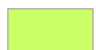
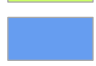


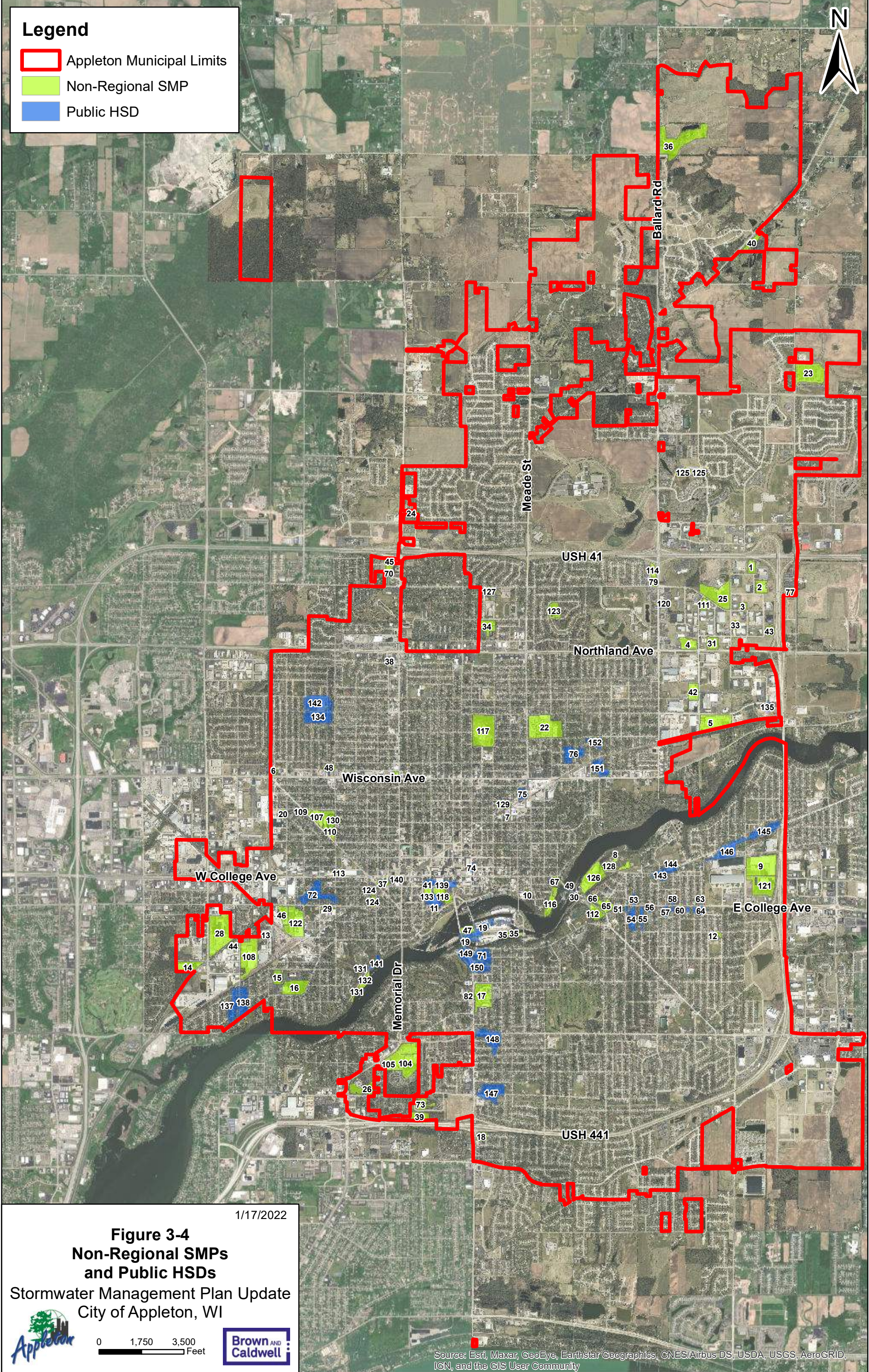
0 1,750 3,500
Feet



Source: Esri, Maxar, GeoEye, Earthstar Geographics, CNES/Airbus DS, USDA, USGS, AeroGRID, IGN, and the GIS User Community

Legend

-  Appleton Municipal Limits
-  Non-Regional SMP
-  Public HSD



1/17/2022

**Figure 3-4
Non-Regional SMPs
and Public HSDs**

Stormwater Management Plan Update
City of Appleton, WI






0 1,750 3,500
Feet



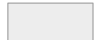



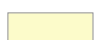



Source: Esri, Maxar, GeoEye, Earthstar Geographics, CNES/Airbus DS, USDA, USGS, AeroGRID, IGN, and the GIS User Community

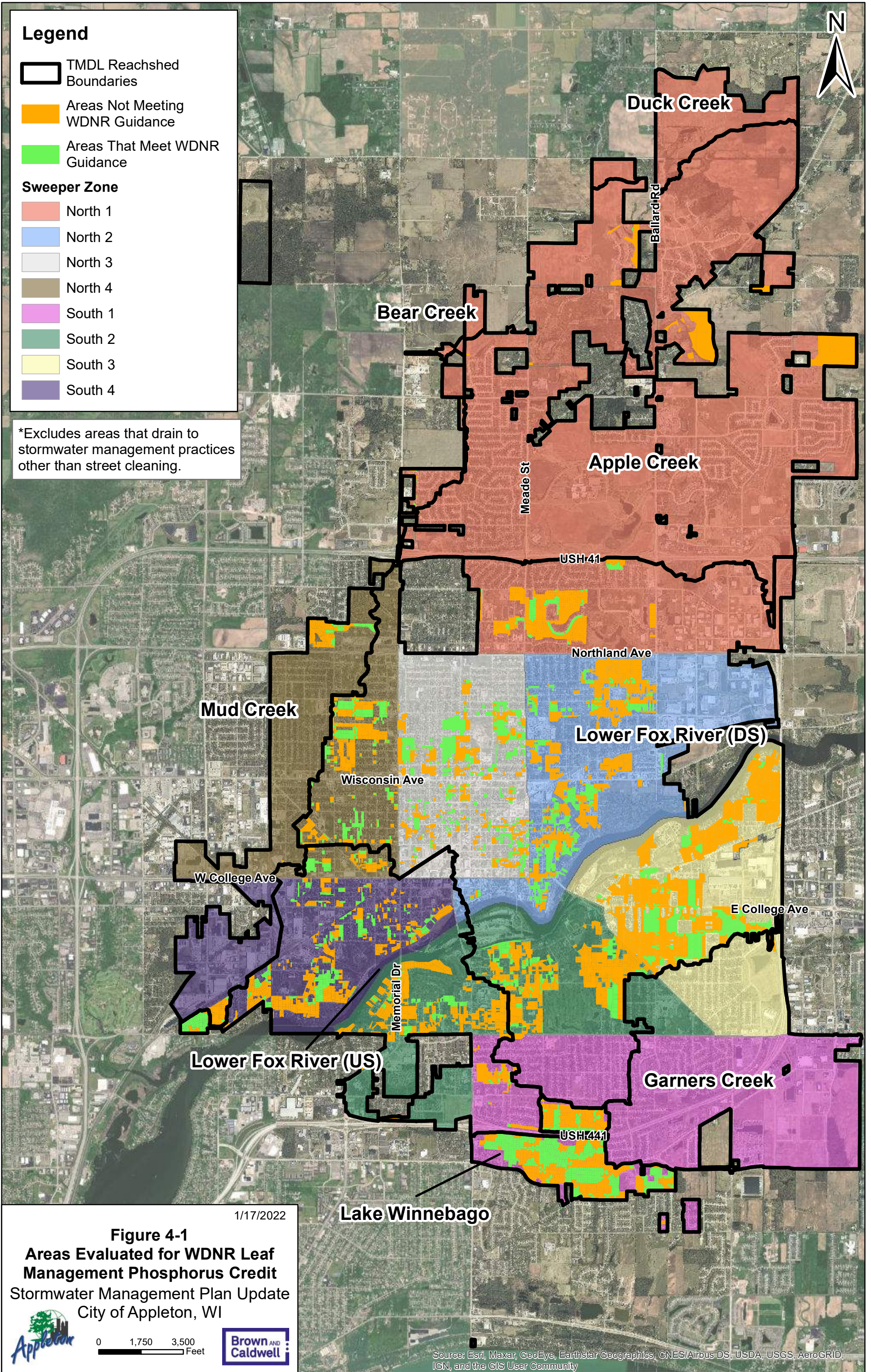
Legend

-  TMDL Reached Boundaries
-  Areas Not Meeting WDNR Guidance
-  Areas That Meet WDNR Guidance

Sweeper Zone

-  North 1
-  North 2
-  North 3
-  North 4
-  South 1
-  South 2
-  South 3
-  South 4

*Excludes areas that drain to stormwater management practices other than street cleaning.



1/17/2022

Figure 4-1
Areas Evaluated for WDNR Leaf Management Phosphorus Credit
 Stormwater Management Plan Update
 City of Appleton, WI










0 1,750 3,500 Feet

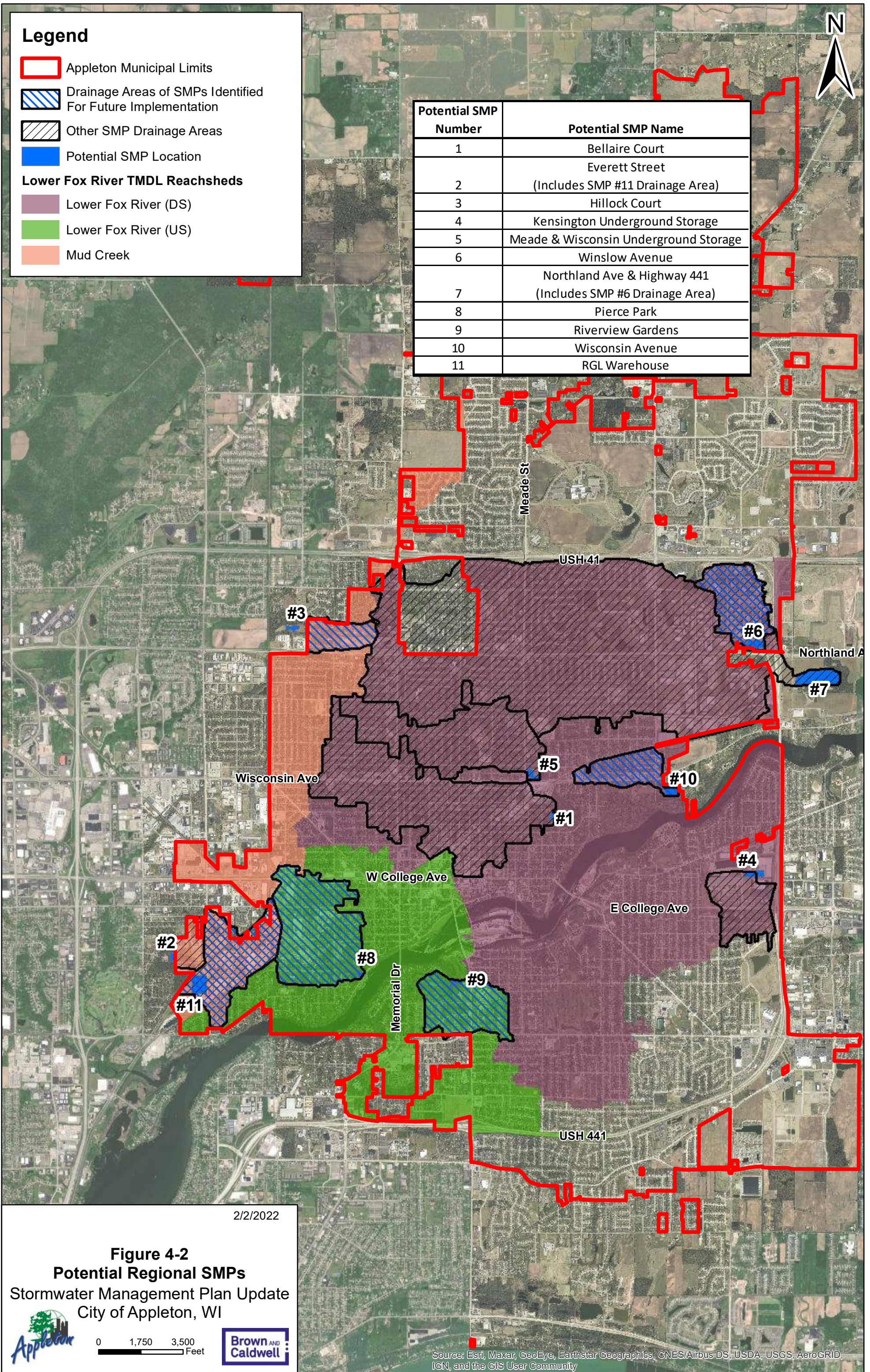


Source: Esri, Maxar, GeoEye, Earthstar Geographics, CNES/Airbus DS, USDA, USGS, AeroGRID, IGN, and the GIS User Community

Legend

-  Appleton Municipal Limits
 -  Drainage Areas of SMPs Identified For Future Implementation
 -  Other SMP Drainage Areas
 -  Potential SMP Location
- Lower Fox River TMDL Reachsheds**
-  Lower Fox River (DS)
 -  Lower Fox River (US)
 -  Mud Creek

Potential SMP Number	Potential SMP Name
1	Bellaire Court
2	Everett Street (Includes SMP #11 Drainage Area)
3	Hillock Court
4	Kensington Underground Storage
5	Meade & Wisconsin Underground Storage
6	Winslow Avenue
7	Northland Ave & Highway 441 (Includes SMP #6 Drainage Area)
8	Pierce Park
9	Riverview Gardens
10	Wisconsin Avenue
11	RGL Warehouse



2/2/2022

Figure 4-2
Potential Regional SMPs
 Stormwater Management Plan Update
 City of Appleton, WI



0 1,750 3,500 Feet





Source: Esri, Maxar, GeoEye, Earthstar Geographics, CNES/Airbus DS, USDA, USGS, AeroGRID, IGN, and the GIS User Community


Legend

 Appleton Municipal Limits

TMDL Reachsheds


 Lower Fox River (DS)


 Lower Fox River (US)

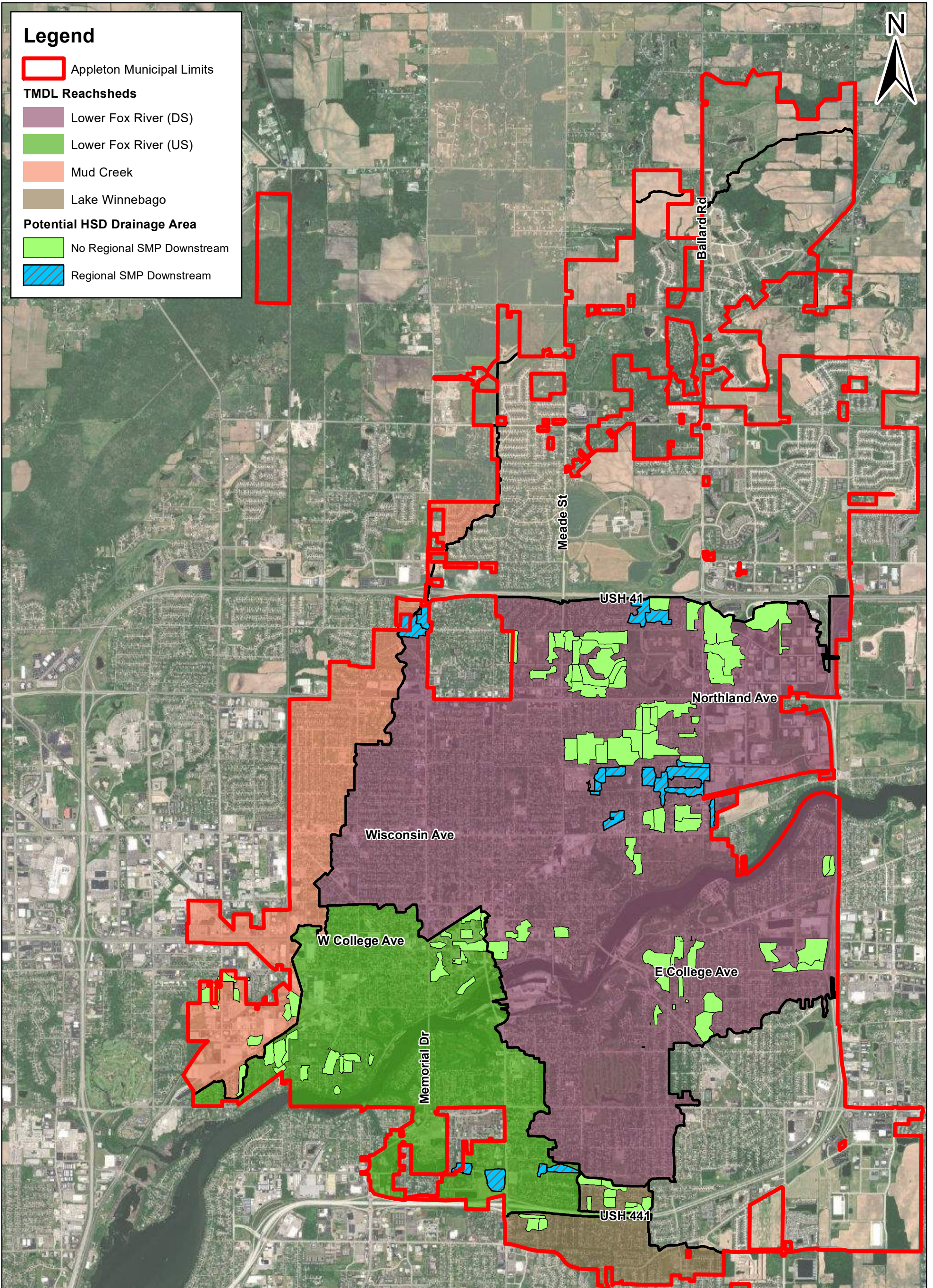
 Mud Creek

 Lake Winnebago

Potential HSD Drainage Area

 No Regional SMP Downstream

 Regional SMP Downstream



1/17/2022

**Figure 4-3
Potential HSDs**

Stormwater Management Plan Update
City of Appleton, WI



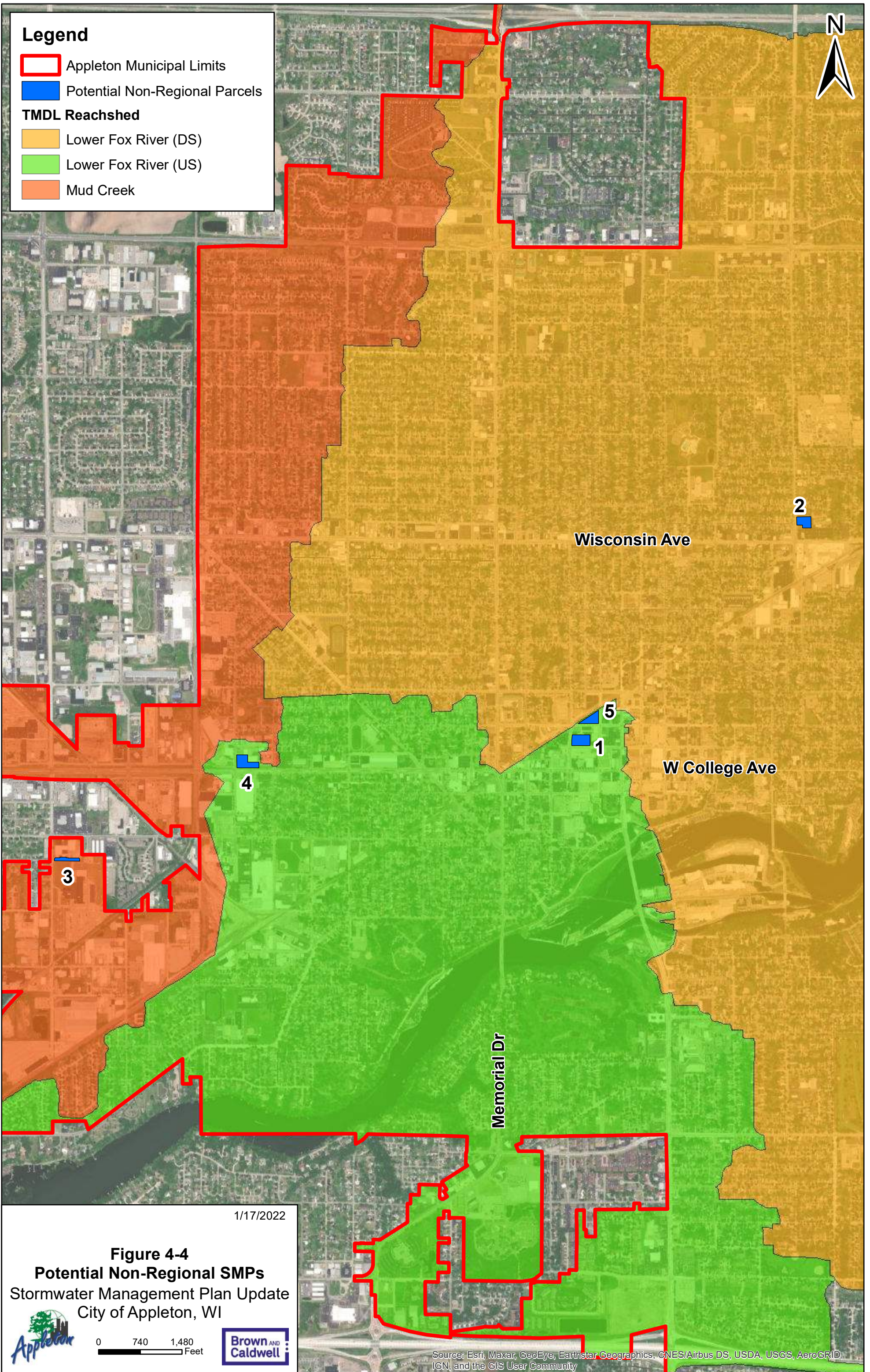
0 1,750 3,500
Feet



Source: Esri, Maxar, GeoEye, Earthstar Geographics, CNES/Airbus DS, USDA, USGS, AeroGRID, IGN, and the GIS User Community

Legend

-  Appleton Municipal Limits
-  Potential Non-Regional Parcels
- TMDL Reached**
-  Lower Fox River (DS)
-  Lower Fox River (US)
-  Mud Creek



1/17/2022

Figure 4-4
Potential Non-Regional SMPs
Stormwater Management Plan Update
City of Appleton, WI



0 740 1,480
Feet



Source: Esri, Maxar, GeoEye, Earthstar Geographics, CNES/Airbus DS, USDA, USGS, AeroGRID, IGN, and the GIS User Community




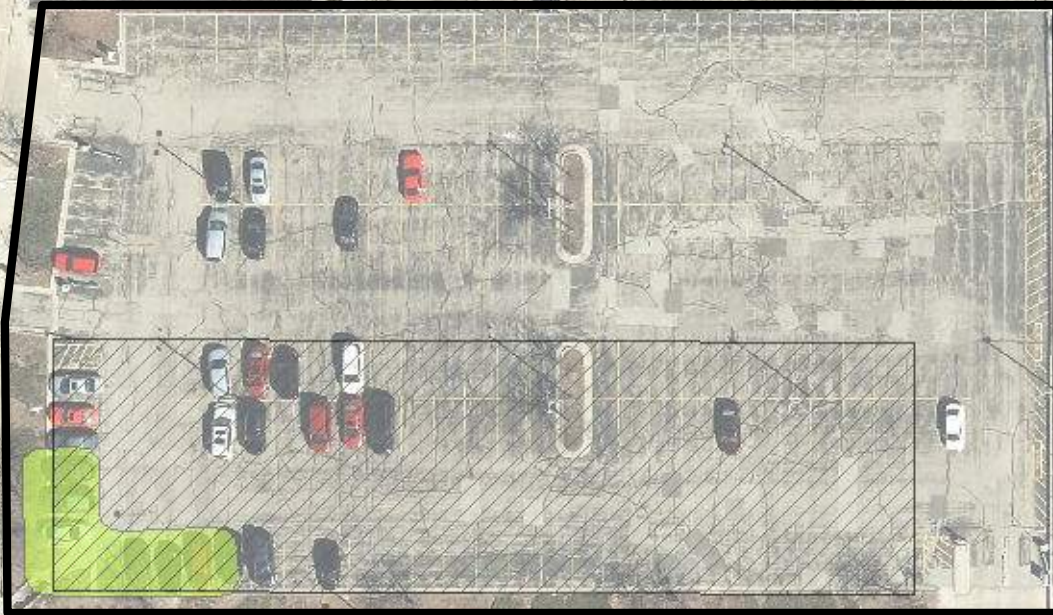
Legend

 Treated Area

SMP Type

 Biofilter

 Porous Pavement

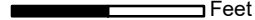


10/11/2021

Figure 4-5
200 E Washington
Potential Non-Regional SMPs
Stormwater Management Plan Update
City of Appleton, WI



0 30 60 Feet



Legend

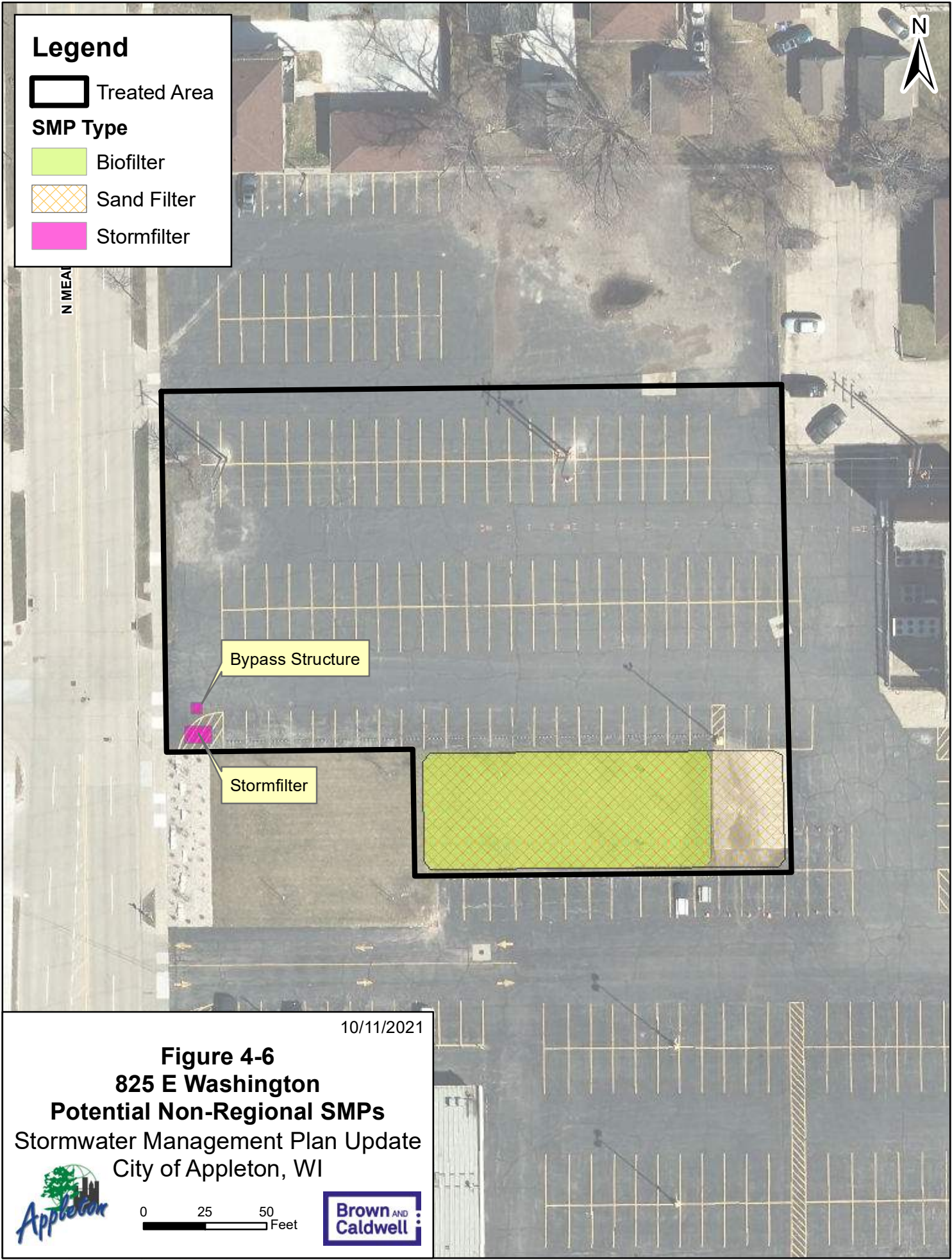
 Treated Area

SMP Type

 Biofilter

 Sand Filter

 Stormfilter



10/11/2021

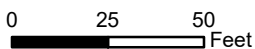
Figure 4-6

825 E Washington

Potential Non-Regional SMPs

Stormwater Management Plan Update

City of Appleton, WI






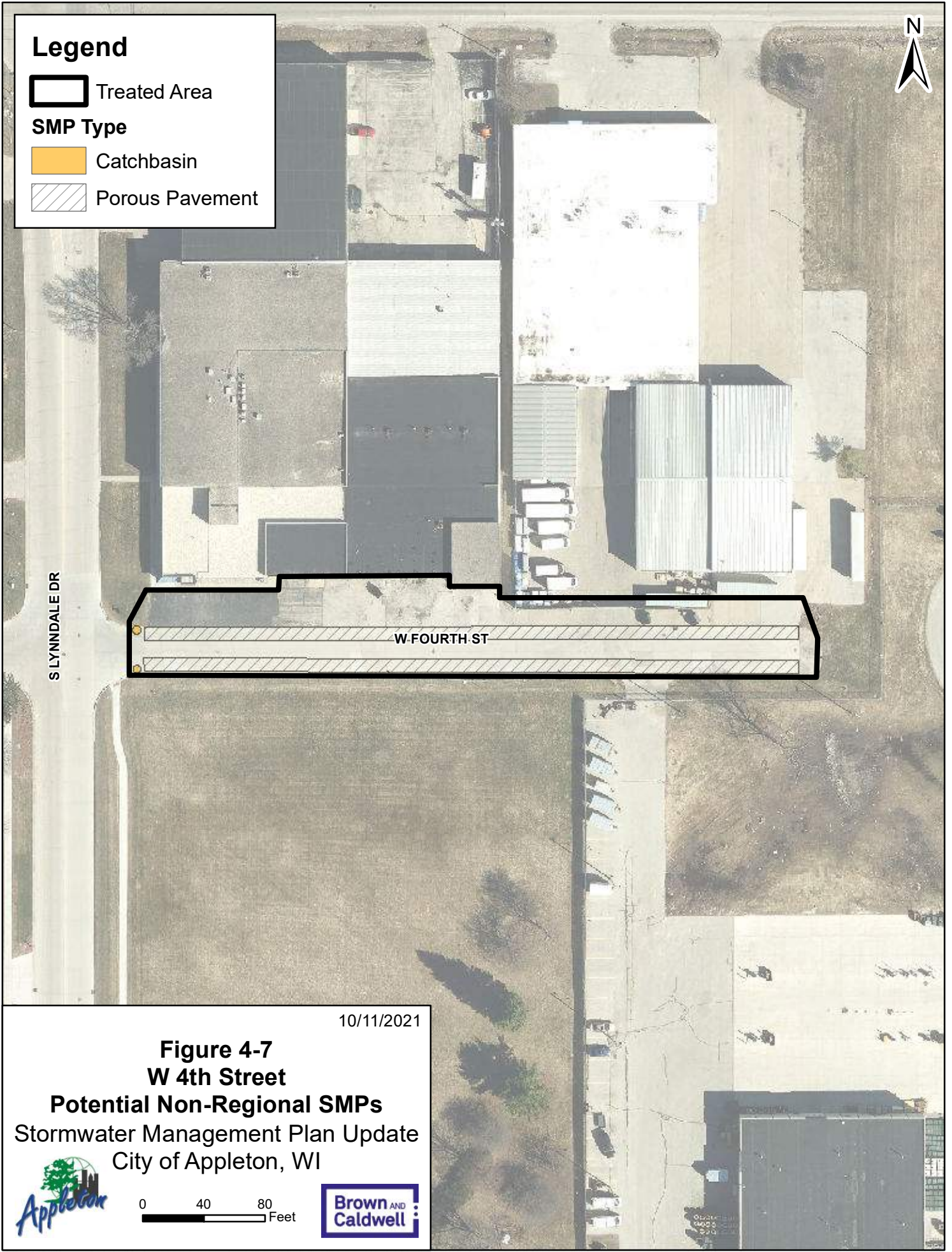
Legend

 Treated Area

SMP Type

 Catchbasin

 Porous Pavement



10/11/2021

Figure 4-7 W 4th Street

Potential Non-Regional SMPs


Stormwater Management Plan Update
City of Appleton, WI



0 40 80 Feet



Legend

 Treated Area

SMP Type

 Rain Garden

W WASHINGTON ST



W COLLEGE AV

10/11/2021

Figure 4-8
116 N Linwood
Potential Non-Regional SMPs
Stormwater Management Plan Update
City of Appleton, WI



0 30 60 Feet




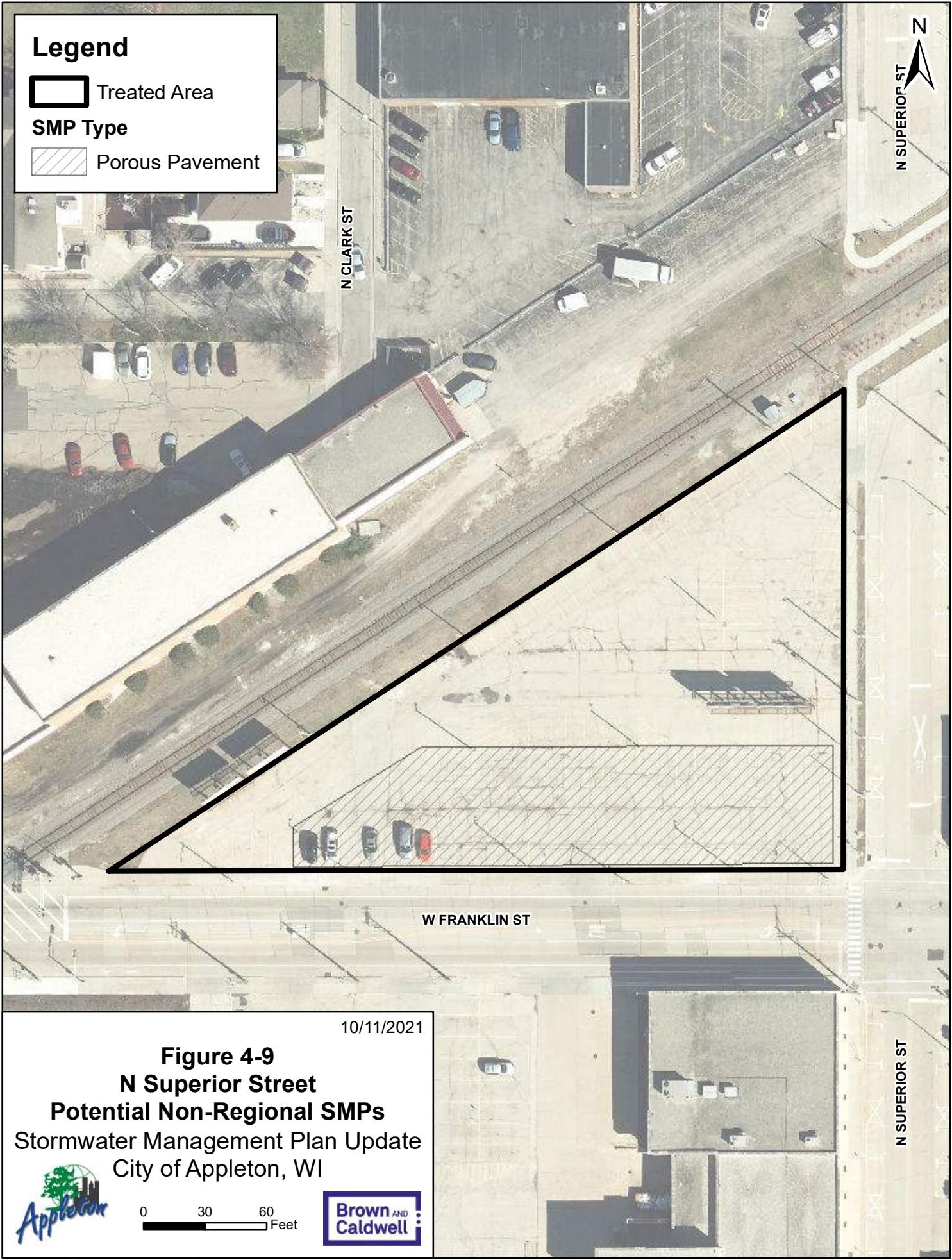
S VICTORIA ST

Legend

 Treated Area

SMP Type

 Porous Pavement



10/11/2021

Figure 4-9
N Superior Street
Potential Non-Regional SMPs
Stormwater Management Plan Update
City of Appleton, WI



0 30 60 Feet

