

Wetland Protected Area Exhibit

Part of Lots 90, 91, 92, 93, 94, 95, 96 and 97, North Edgewood Estates 3, being part of the Northwest 1/4 of the Southwest 1/4 and part of the Northeast 1/4 of the Southwest 1/4 all located in of Section 05, Township 21 North, Range 18 East, City of Appleton, Outagamie County, Wisconsin

Wetland Protected Area Setback Exhibit:

Setback shown is per City of Appleton protective area in City of Appleton Code 20-312(f)

Wetland Protected Area Exhibit:

The following requirements apply as excerpted from City of Appleton Municipal Code 20-312(f):

(3) The following requirements shall be met:

- a. Impervious surfaces shall be kept out of the protective area entirely or [as may be approved by the City of Appleton] to the maximum extent practicable.
- b. Where land disturbing construction activity occurs within a protective area, and where no impervious surface is present, adequate sod or self-sustaining native vegetative cover of seventy percent (70%) or greater shall be established and maintained. The self-sustaining vegetative cover shall be sufficient to provide for bank stability, maintenance of fish habitat and filtering of pollutants from upslope overland flow areas under sheet flow conditions. [Subject to the issuance of all applicable permit], nonvegetative materials, such as rock riprap, may be employed on the bank as necessary to prevent erosion, such as on steep slopes or where high velocity flows occur.
- c. Best management practices such as filter strips, treatment swales, or wet detention basins, that are designed to control pollutants from nonpoint sources may be located in the protective area.

(5) Protective areas do not apply to:

- d. Post-construction sites from which runoff does not enter the surface water, including wetlands, without first being treated by a [Stormwater Management Practice that has been approved by the City of Appleton], except to the extent that vegetative ground cover is necessary to maintain bank stability.

Disclaimer

The attached maps are a representation of current conditions and regulations, this Affidavit is a documentation of an updated wetland delineation. Per the City's current interpretation of City of Appleton code 17.12(b)(2) dimensioned location of these lines is required. Due to changing nature of environmental conditions and regulatory nature of wetlands, flood plain and ordinary high water mark these dimensions should only act as a guide and actual field conditions and/or legislative regulations are held over dimensions shown on this map.

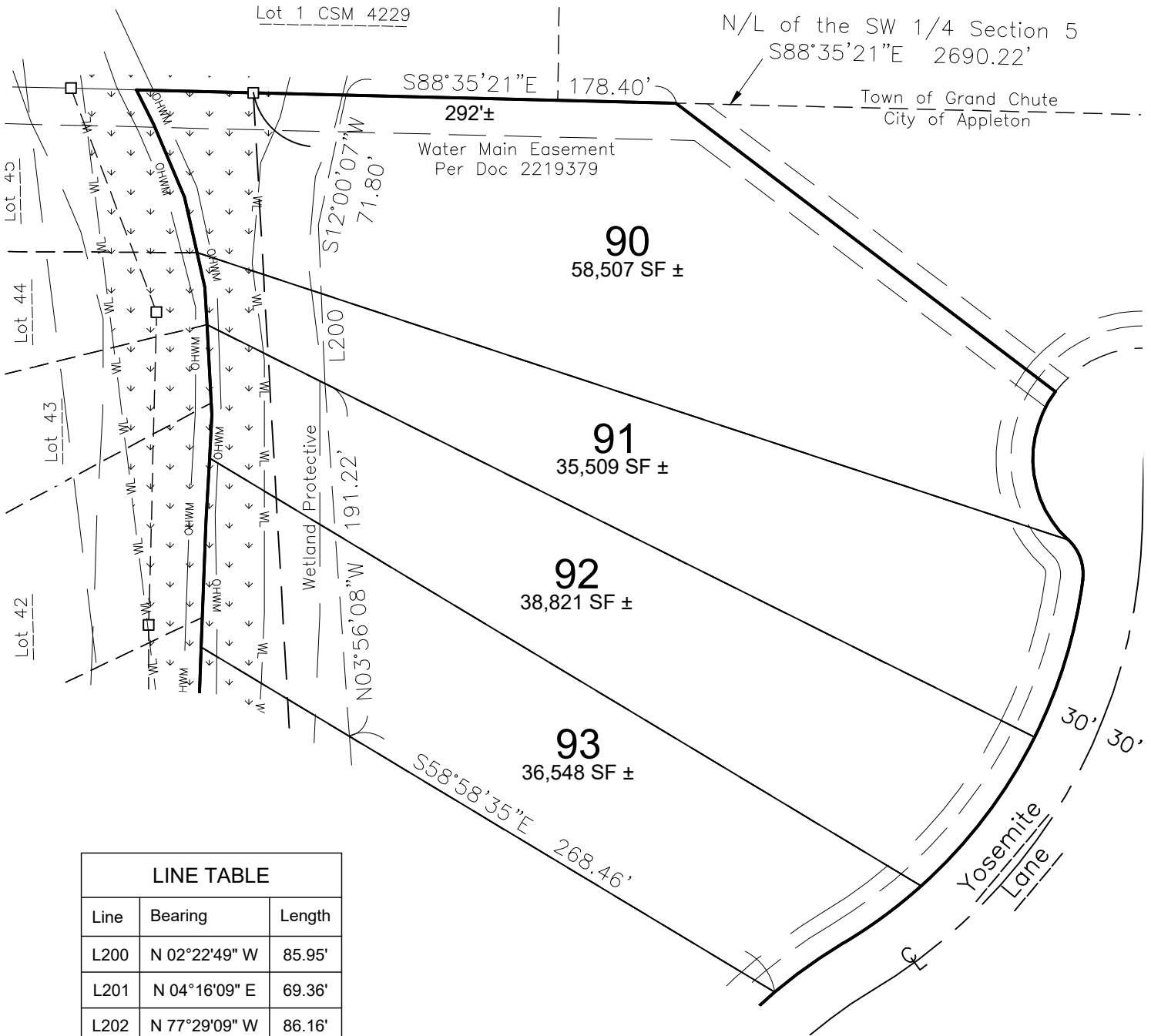


**DAVEL ENGINEERING &
ENVIRONMENTAL, INC.**
Civil Engineers and Land Surveyors

1164 Province Terrace, Menasha, WI 54952
Ph: 920-991-1866 Fax: 920-441-0804
www.davel.pro

File: 7910Exhibit.dwg
Date: 05/02/2024
Drafted By: Jim
Sheet: 2 of 4

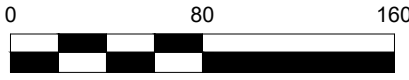
Wetland Protected Area Exhibit



LINE TABLE		
Line	Bearing	Length
L200	N 02°22'49" W	85.95'
L201	N 04°16'09" E	69.36'
L202	N 77°29'09" W	86.16'



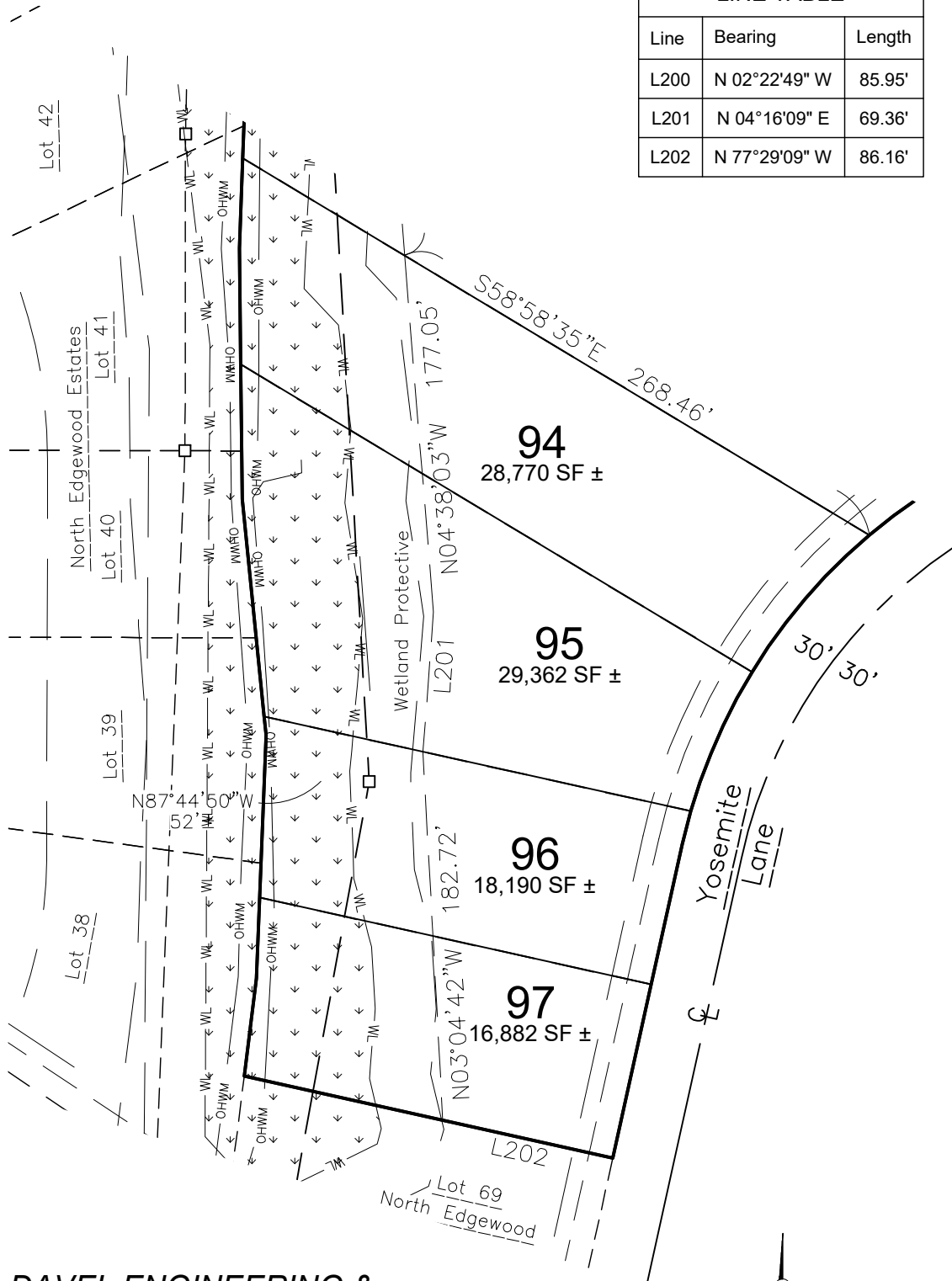
DAVEL ENGINEERING & ENVIRONMENTAL, INC.
 Civil Engineers and Land Surveyors
 1164 Province Terrace, Menasha, WI 54952
 Ph: 920-991-1866 Fax: 920-441-0804
 www.davel.pro



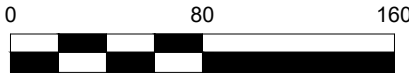
File: 7910Exhibit.dwg
 Date: 05/02/2024
 Drafted By: Jim
 Sheet: 3 of 4

Wetland Protected Area Exhibit

LINE TABLE		
Line	Bearing	Length
L200	N 02°22'49" W	85.95'
L201	N 04°16'09" E	69.36'
L202	N 77°29'09" W	86.16'



DAVEL ENGINEERING & ENVIRONMENTAL, INC.
 Civil Engineers and Land Surveyors
 1164 Province Terrace, Menasha, WI 54952
 Ph: 920-991-1866 Fax: 920-441-0804
 www.davel.pro



File: 7910Exhibit.dwg
 Date: 05/02/2024
 Drafted By: Jim
 Sheet: 4 of 4