

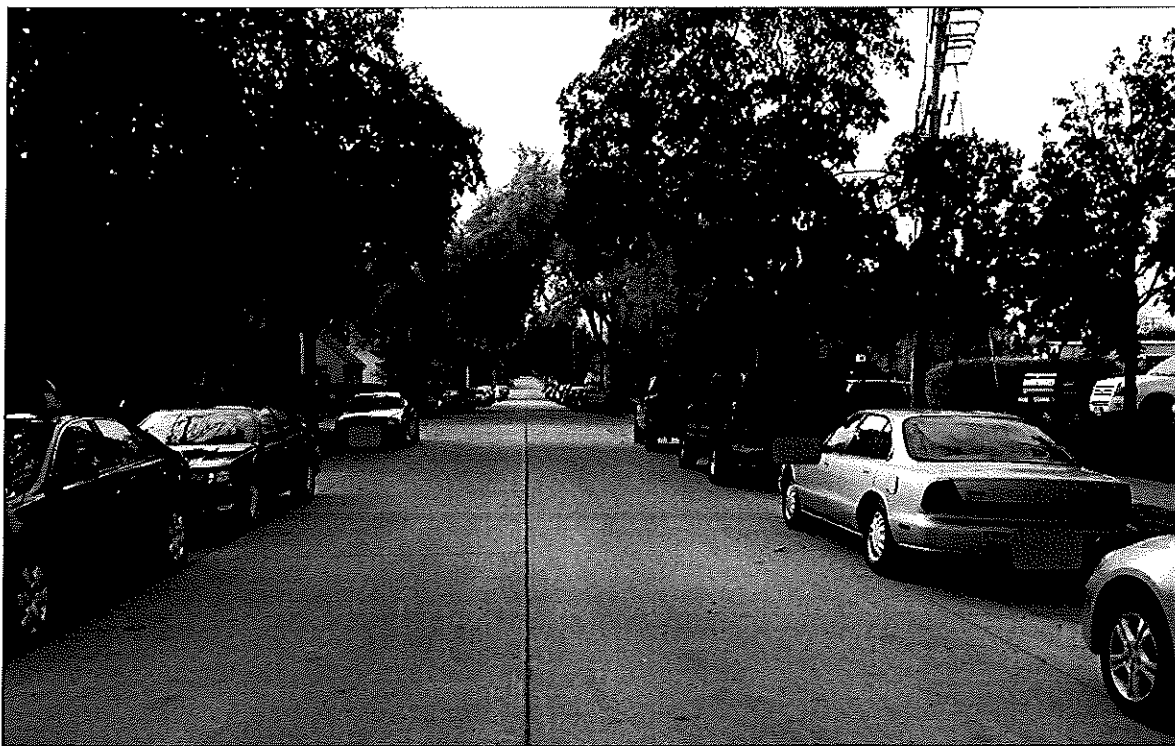


DEPARTMENT OF PUBLIC WORKS
Engineering Division – Traffic Section
2625 E. Glendale Avenue
Appleton, WI 54911
TEL (920) 832-5580
FAX (920) 832-5570

To: Municipal Services Committee
From: Michael S. Hardy, Assistant City Traffic Engineer
Date: December 4, 2013
Re: 90-DAY TRIAL, New Parking Restrictions; 1400-1600 S. Jefferson Street & 400 E. Maple Street

The Traffic Section has received several complaints from property owners about the current on-street parking situation on Jefferson Street near the Maple Street intersection. The property owners expressed the concern that cars parked on Jefferson Street are making the drivers' ability to navigate the Jefferson Street and Maple Street intersection much more difficult. Also, the number of cars parked on both sides of Jefferson and Maple Street has made navigation of the street more complicated, and there is concern that two cars will not be able to pass when winter snow banks arrive. Missed garbage collection has also been a concern. Property owners have advised us that the current on-street parking situation seems to be caused by the displacement of vehicles from St. Elizabeth's construction of the new bed tower.

A visit to this location confirmed there is a saturation of on-street parking on Jefferson Street near the Maple Street intersection, from Fremont Street extending into the 1600 block of S. Jefferson Street. Similar on-street parking was also present on Maple Street east of Jefferson Street.



Jefferson Street, north of Maple Street, looking south

The blocks of 1400 through 1600 of S Jefferson Street (starting at Fremont Street and extending south of Maple Street) and the block of 400 E. Maple Street (east of Jefferson Street) have a common residential street width of 32 feet between curb faces. This typically accommodates on-street parking for residential use.

The Traffic Section contacted St. Elizabeth (Affinity) representatives to understand the exact cause and duration of the surge in on-street parking. St. Elizabeth advised us that they have a policy that directs employees to use off-street parking lots. Construction workers are also required to park in designated lots off site and be bused to the job site. St. Elizabeth has reiterated this policy to employees and construction workers. However, St. Elizabeth acknowledged that due to the bed tower construction, their available employee parking is near capacity. It's estimated the construction of the new bed tower has currently displaced over 150 parking stalls. Once the bed tower project is completed (Fall 2014), they feel confident the on-street parking on Jefferson Street and Maple Street will move back to St. Elizabeth parking lots. A parking study completed by St. Elizabeth at the request of the City's Community Development Department demonstrated that adequate off-street parking would be available once the current projects are complete.

Considering the above, the Traffic Section feels permanent parking restrictions are necessary to manage any on-street parking issues near the intersection of Jefferson Street and Maple Street. We recommend new permanent parking restrictions on the west side of Jefferson Street, at Maple Street, extending 40-feet north and south to improve the navigation of traffic through this intersection. On the east side of Jefferson Street and on Maple Street, new signs would be posted to reinforce existing State Statutes that prohibit parking within 15-feet of a pedestrian crossing at an intersection (Figure 1).

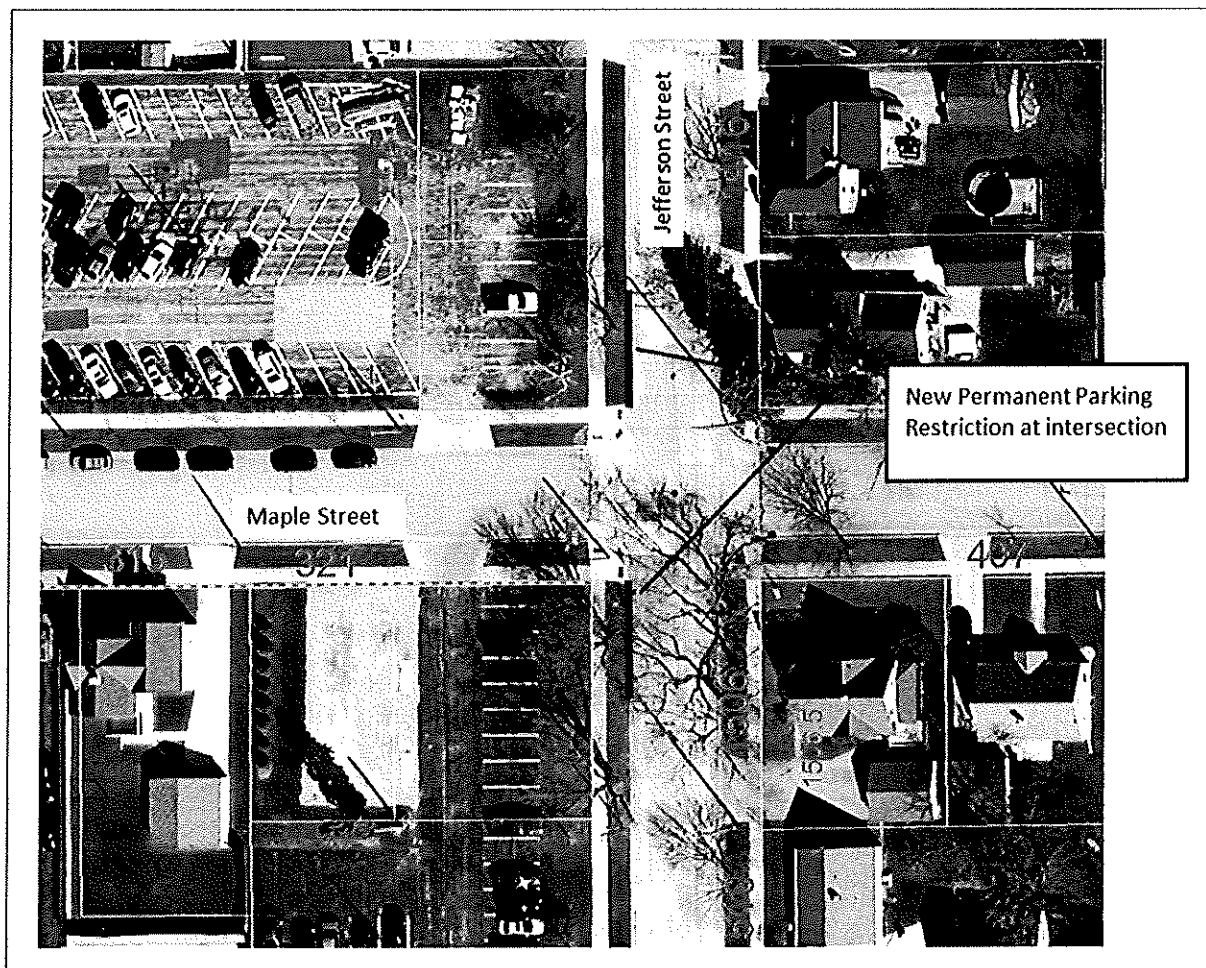


Figure 1: New permanent parking restrictions on Jefferson Street at Maple Street

Additionally, We conducted a survey of affected property owners to understand if there would be support for additional on-street parking restrictions. We proposed a new restriction, permanently post "*Parking be prohibited from 7:00 a.m. to 5:00 p.m., except Saturdays, Sundays and Holidays*", on the east side of Jefferson Street, from

Fremont Street proceeding south to approximately 325 feet south of Maple Street (end of St. Elizabeth property/parking lot). We also proposed this new restriction on the south side of Maple Street, between Jefferson Street and Jackson Street. We proposed this new restriction to limit any on-street parking due to St. Elizabeth to only use one side of the street. The following is a synopsis of the questionnaires that were returned.

1400-1500 S. Jefferson Street

Location	Survey Response Rate	% Of Respondents Supporting:		
		Parking be prohibited from 7:00 a.m. to 5:00 p.m., excluding Saturdays, Sundays and Holidays	No new parking restrictions	Other
1400 - 1500 S. Jefferson Street	54% (7 of 13)	57% (4)	43% (3)	0% (0)

Note: One respondent suggested extending the proposed restriction into 1600 S. Jefferson Street

400 E. Maple Street

Location	Survey Response Rate	% Of Respondents Supporting:		
		Parking be prohibited from 7:00 a.m. to 5:00 p.m., excluding Saturdays, Sundays and Holidays	No new parking restrictions	Other
400 E. Maple Street	22% (2 of 9)	0% (0)	50% (1)	50% (1)

Note: "Other" respondent suggested parking restrictions on both sides of street

On Jefferson Street, a slight majority of respondents support the additional proposed restrictions. We also agree with the feedback that the restriction should be extended into the 1600 block of S. Jefferson Street. This would extend the additional proposed restriction from 325-feet to 575-feet south of Maple Street (Figure 2).

On Maple Street, the limited respondents had a different view of the proposal. The survey respondents either desired no new restrictions or to restrict traffic on both sides of the street. We feel that some restriction is needed to manage any relocation of on-street parking from the new restrictions on Jefferson Street. To accommodate this, we recommend an alternative restriction of "2-Hour Parking, 7am-5pm, except Saturday, Sundays and Holiday" (Figure 2).

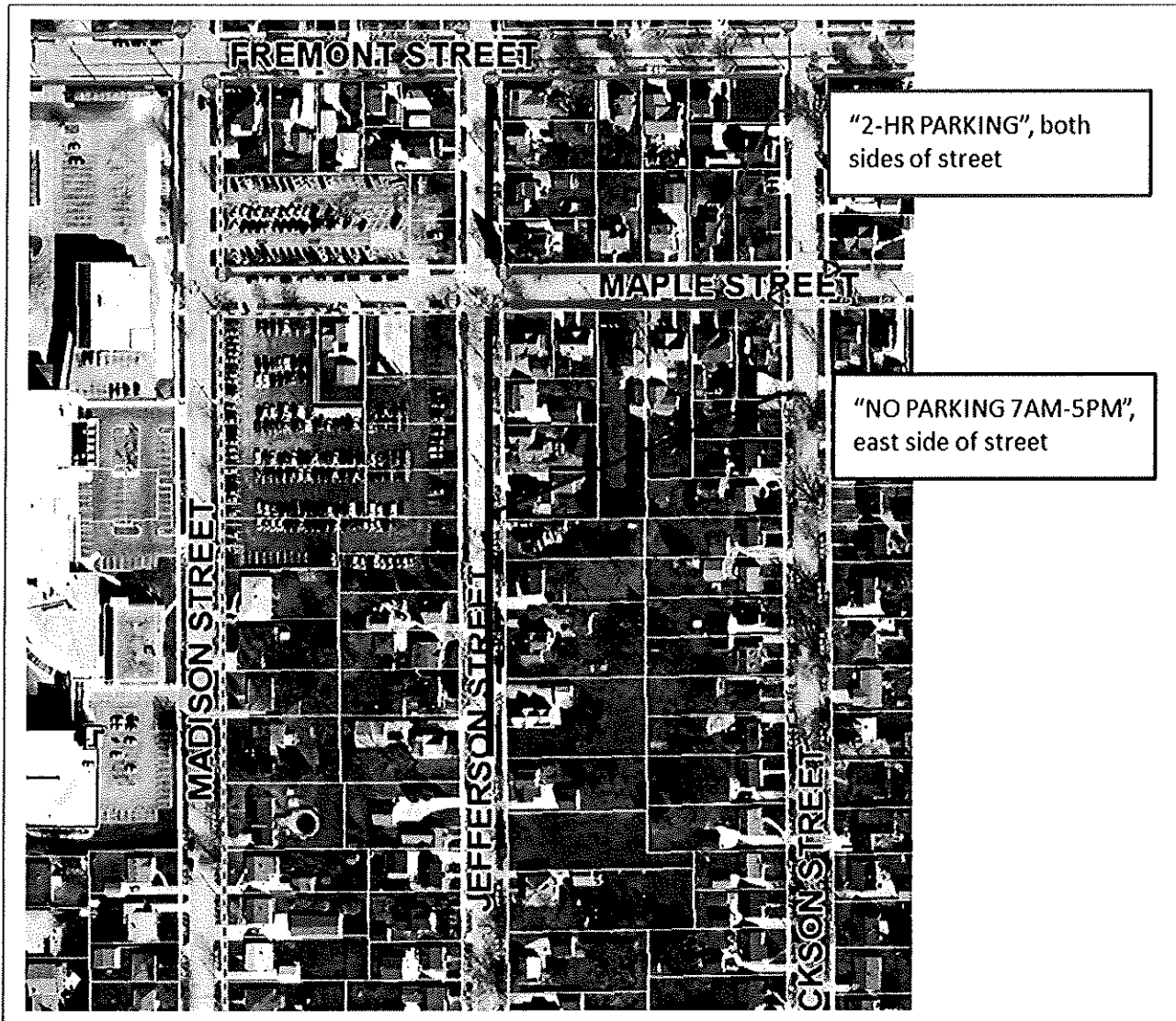


Figure 2: Additional On-Street Parking Restrictions on Jefferson Street and Maple Street

Considering all the above discussion and the survey responses, we recommend these on-street restrictions be approved for a 90-day trial period. This will allow these restrictions to be implemented immediately with Municipal Services Committee approval in anticipation of the upcoming winter months. We will also monitor the effectiveness during the 90-day trial, with hopes of removing these restrictions upon completion of the new bed tower construction by St. Elizabeth.

To accomplish this, the following ordinance action is required:

1. **Create_{90-Trial}:** "Parking be prohibited on the west side of Jefferson Street from Maple Street to a point 40 feet north of Maple Street."
2. **Create_{90-Trial}:** "Parking be prohibited on the west side of Jefferson Street from Maple Street to a point 40 feet south of Maple Street."
3. **Create_{90-Trial}:** "Parking be prohibited on the east side of Jefferson Street, from 7 a.m. to 5 p.m., except Saturdays, Sundays and Holidays, from Maple Street to Fremont Street."
4. **Create_{90-Trial}:** "Parking be prohibited on the east side of Jefferson Street, from 7 a.m. to 5 p.m., except Saturdays, Sundays and Holidays, from Maple Street to a point 575 feet south of Maple Street."
5. **Create_{90-Trial}:** "Parking be restricted to two hours from 7 a.m. to 5 p.m., except Saturdays, Sundays and Holidays, on both sides of Maple Street from Jefferson Street to Jackson Street."