

# Pathways Masterplan Concept 08-11-17

- |  |   |
|--|---|
| <span style="display:inline-block; width:15px; height:15px; background-color:yellow; border:1px solid black;"></span> Worship Center           | <span style="display:inline-block; width:15px; height:15px; background-color:orange; border:1px solid black;"></span> Adult Education                 |
| <span style="display:inline-block; width:15px; height:15px; background-color:blue; border:1px solid black;"></span> Fellowship                 | <span style="display:inline-block; width:15px; height:15px; background-color:lightblue; border:1px solid black;"></span> Administration Offices       |
| <span style="display:inline-block; width:15px; height:15px; background-color:lightorange; border:1px solid black;"></span> Children's Ministry | <span style="display:inline-block; width:15px; height:15px; background-color:lightgrey; border:1px solid black;"></span> Toilets, Storage, Facilities |
| <span style="display:inline-block; width:15px; height:15px; background-color:lightpink; border:1px solid black;"></span> Youth / Multi-Purpose | <span style="display:inline-block; width:15px; height:15px; border:2px dashed orange;"></span> Phase One Project Area                                 |

## Sanitary Sewer Main Estimate.

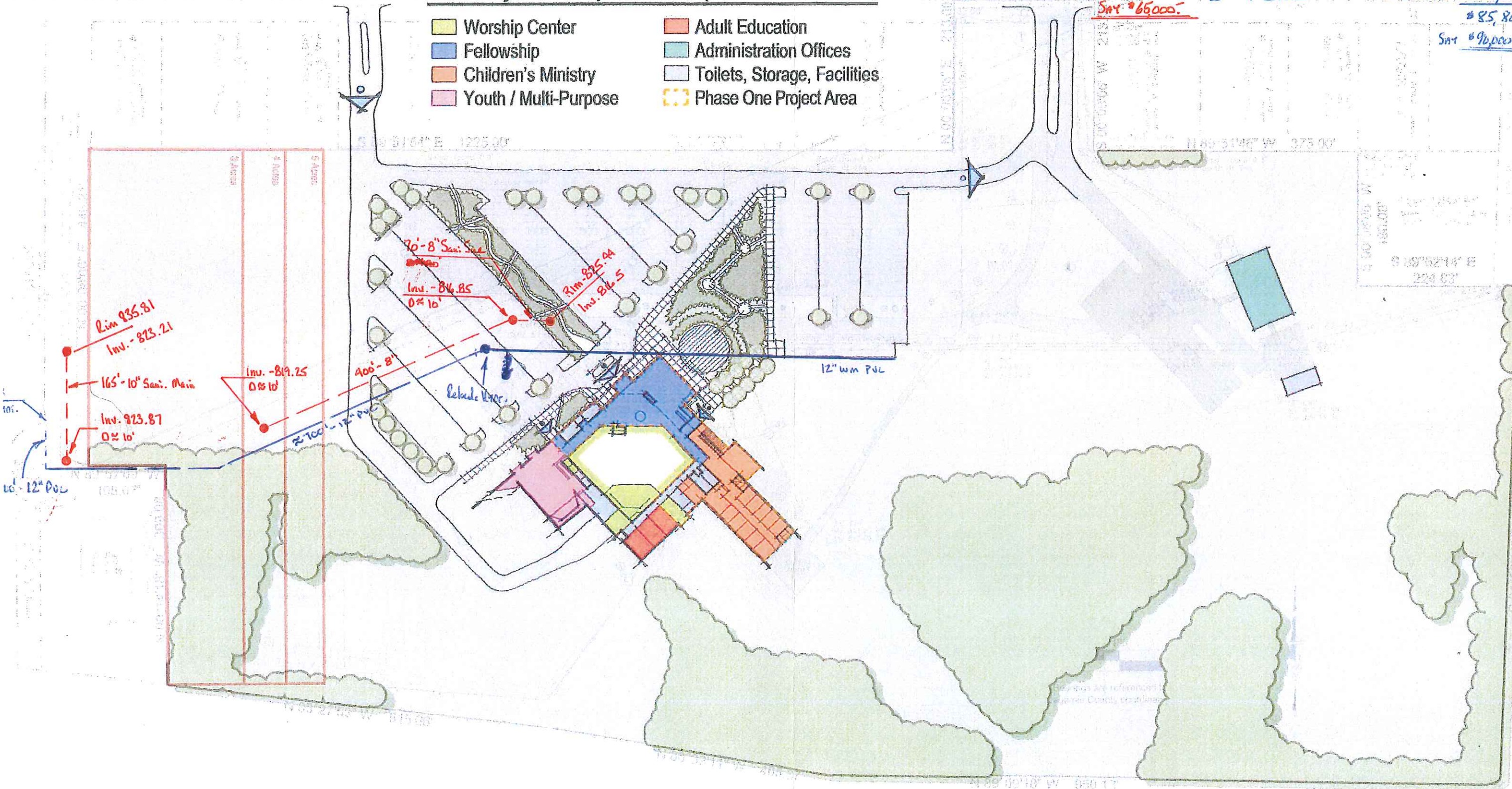
165' - 10" Sewer Main @ 82"/ft.	= 13,530.00
400' - 8" Sewer Main @ 80"/ft.	= 32,000.00
30LF - Sani. MH. @ 350/lf	= 10,500.00
3ea - Sani. MH. Cnt. @ 500/each	= 1,500.00
100' - 4" or 6" Sani. Lk. @ 60"/ft.	= 4,000.00
<b>Total</b>	<b>63,530.00</b>

**SMY = \$66,000.00**

## WATER Main ESTIMATE:

800' - 12" Water Main @ 72"/ft.	= 57,600.00
1EA - Relocate Hydr. @ 1000/ea	= 1,000.00
2EA - Hydr. @ 3500/ea	= 7,000.00
20' - 6" Hydr. Lead @ 70'/ft	= 1,400.00
4ea - 6" GV w/Box @ 1100'/ft.	= 4,400.00
4ea - 12" GV w/Box @ 2700/ft.	= 10,800.00
30' - 6" Service W/BOX @ 80'/ft.	= 2,400.00
20' - 1" Service @ 60'/ft.	= 1,200.00
<b>Total</b>	<b>\$85,800.00</b>

**SMY = \$90,000.00**



Rim 835.81  
 Inv. - 823.21  
 165' - 10" Sani. Main  
 Inv. 823.87  
 0% 10'  
 Inv. - 819.25  
 0% 10'  
 400' - 8"  
 2700' - 12" PVC  
 12" Wm PVC  
 Relocate Hydr.

70' - 8" Sani. Lk.  
 Inv. - 816.85  
 0% 10'  
 Rim - 825.04  
 Inv. - 814.5

