



City of Appleton

Comprehensive Plan Update

September 23, 2024

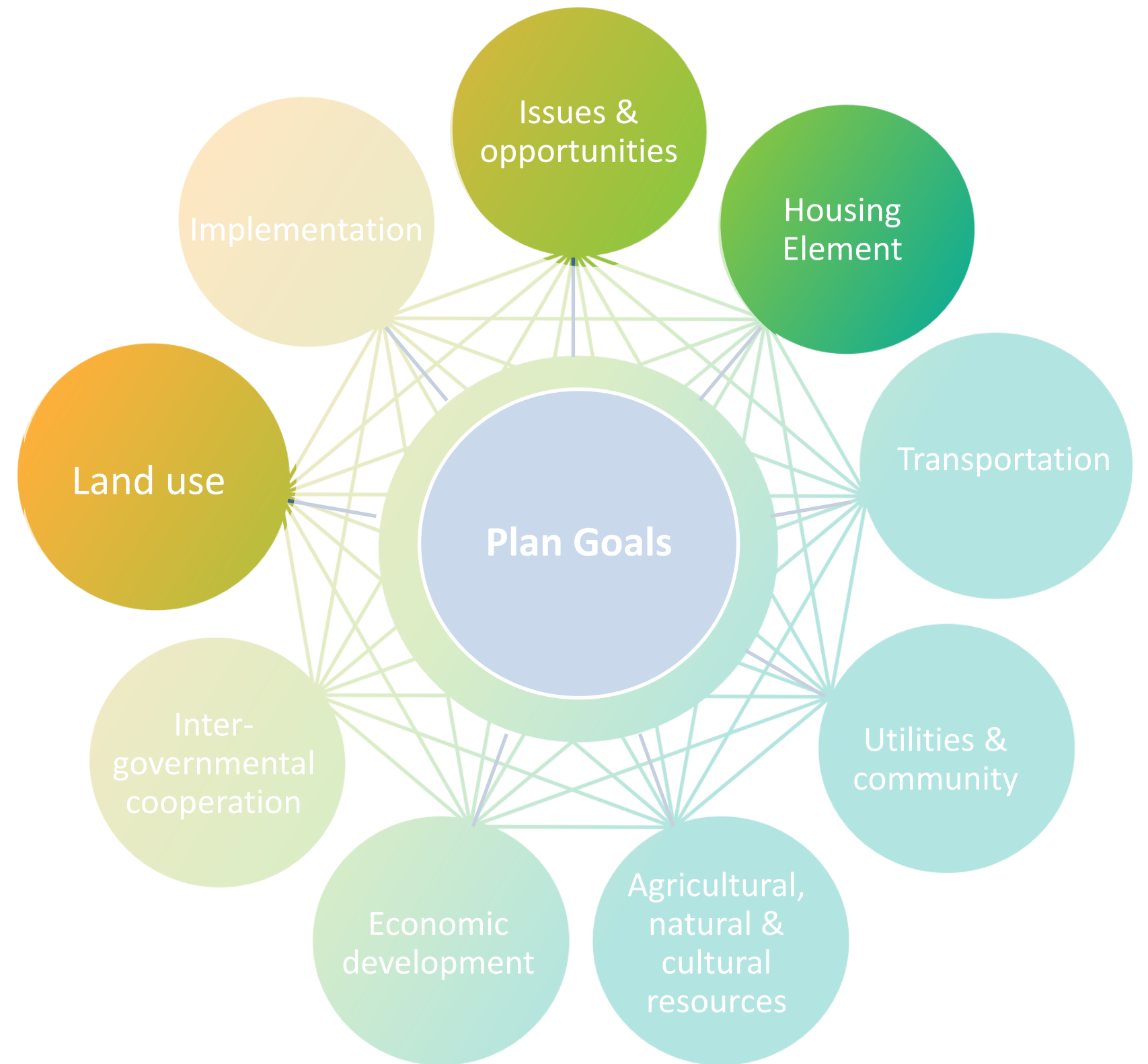
What is a comprehensive plan?

A Comprehensive Plan is a plan document, adopted by common council, that establishes a vision and priorities for the future of the city, guiding the evolution of the city for the decades ahead.

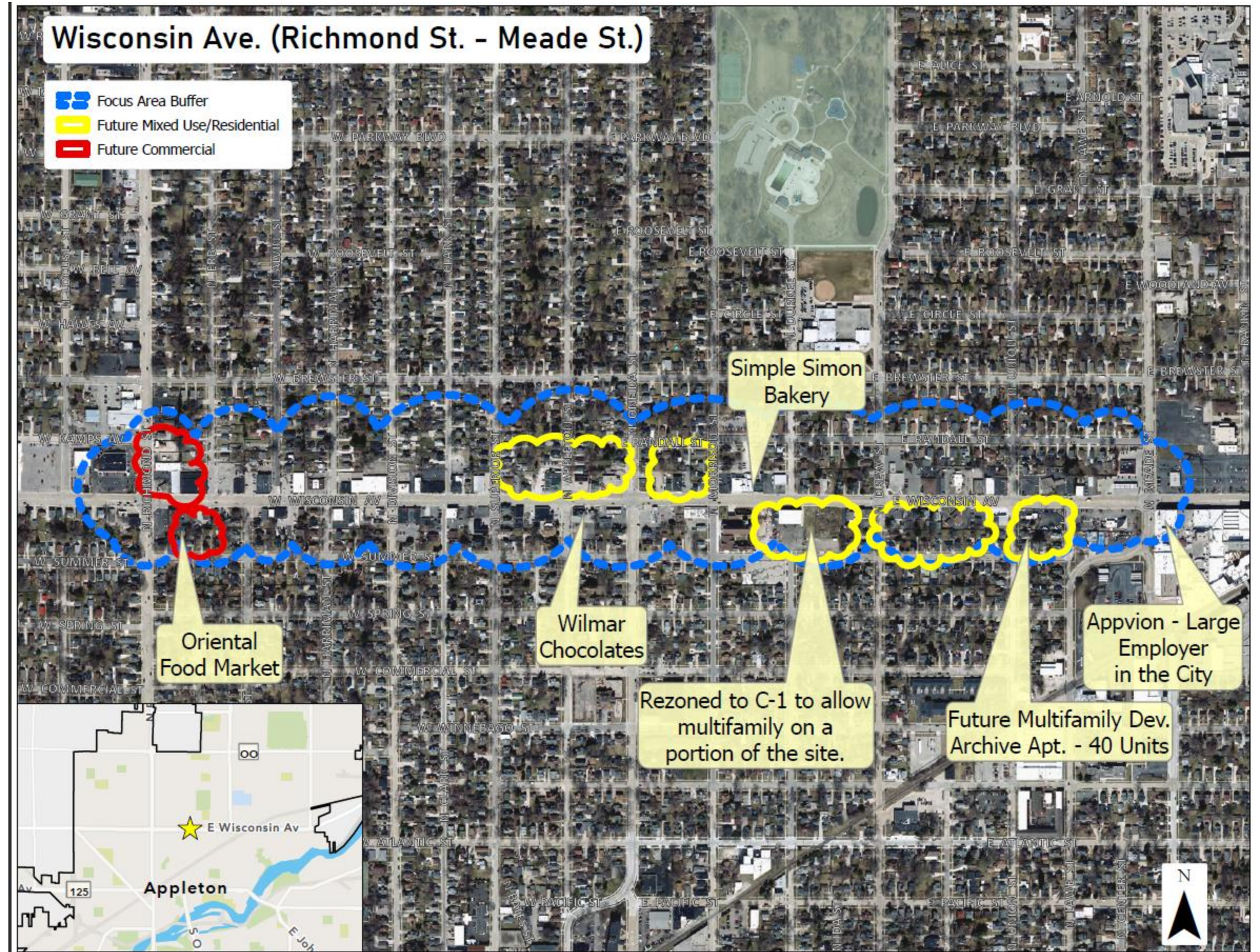


Plan Components

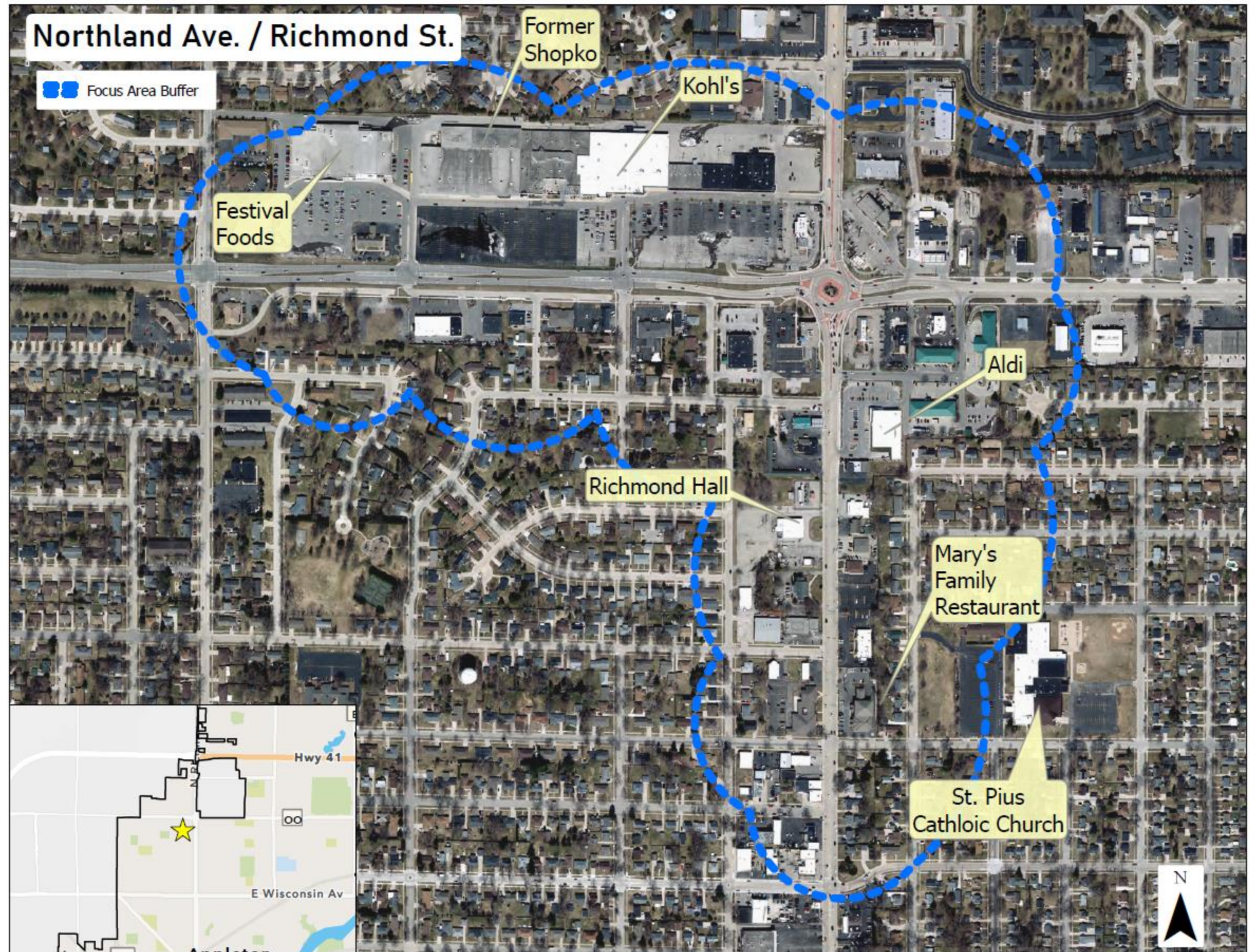
- The plan must contain components required by Wisconsin State Statute.
- This plan update includes three subarea plans.



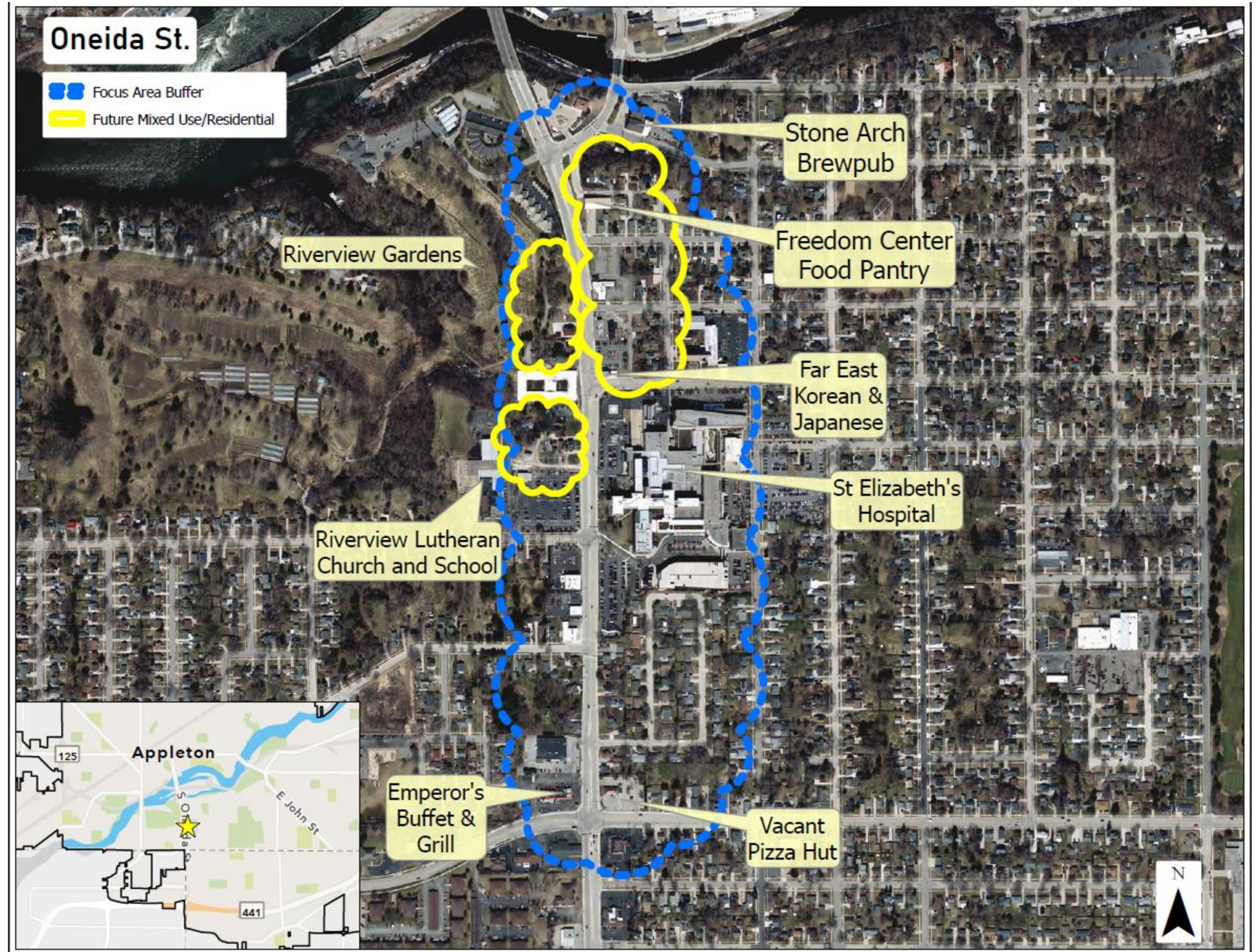
Wisconsin Avenue Subarea



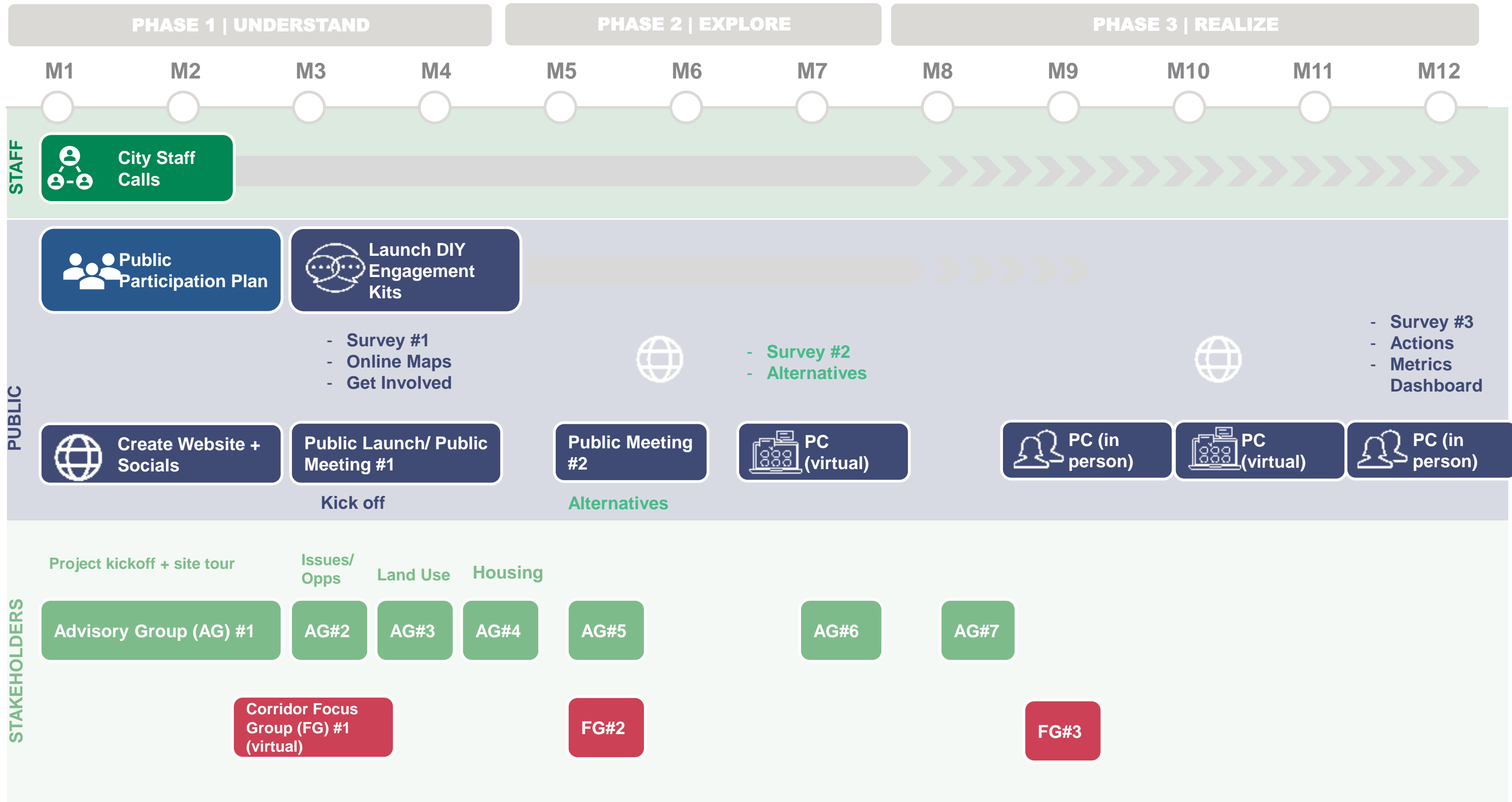
Northland Avenue/ Richmond Street Subarea



Oneida Street Subarea



Timeline



Goals

- A plan that establishes a vision for the City.
- Future land use map to guide future development throughout the City.
- Implementation plan that priorities public spending & capital projects.
- Goals and policies to support desired policy changes.

