

**NOTICE OF PUBLIC HEARING**  
**OF THE**  
**APPLETON CITY PLAN COMMISSION**

Dear property owner(s):

The City of Appleton Plan Commission will conduct a Public Hearing on Wednesday, June 8, 2022, at 3:30 P.M., or as soon thereafter as can be heard, in Common Council Chambers, 6th Floor, City Hall, 100 North Appleton Street, for the purpose of considering the following proposed Special Use Permit:

- Pursuant to Sections 23-66 and 23-113 of the Appleton Municipal Code, to consider a request by Menard Inc, owner, and Erickson Enterprises LLC, applicant, for property located at the northeast corner of Kensington Drive and Express Court (Tax Id #31-4-5568-00) to obtain a Special Use Permit for a car wash. In the C-2 General Commercial District, a Special Use Permit is required for a car wash.
  
- ALDERMANIC DISTRICT: 3 – Alderperson Brad Firkus

You are being notified as a policy of the City of Appleton Community and Economic Development Department. All persons interested are invited to attend this meeting and will be given an opportunity to be heard. Feedback can also be shared with Plan Commission members via written letter, email, or phone call. The Plan Commission makes a recommendation to the Common Council who makes the final decision on the matter.

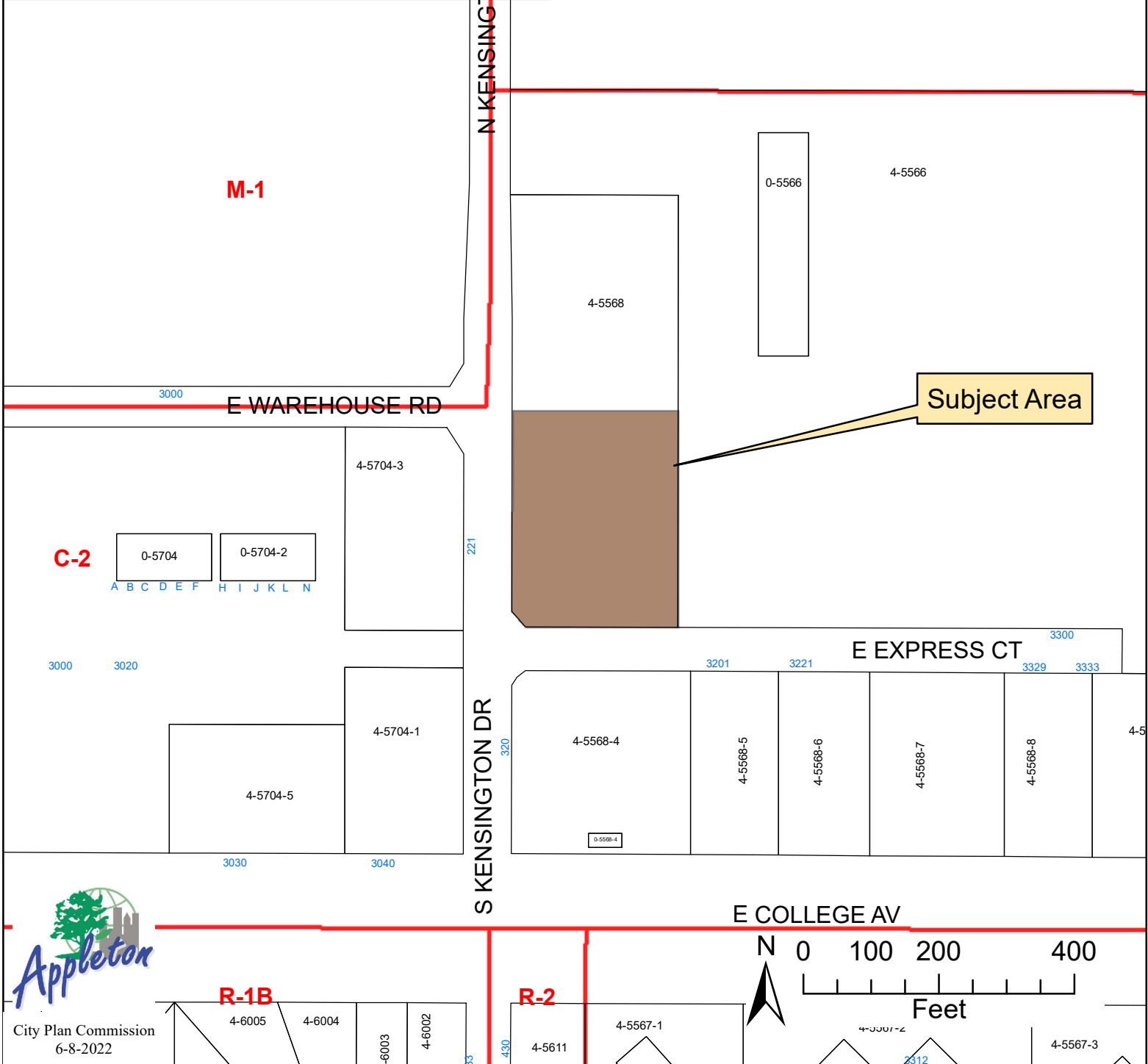
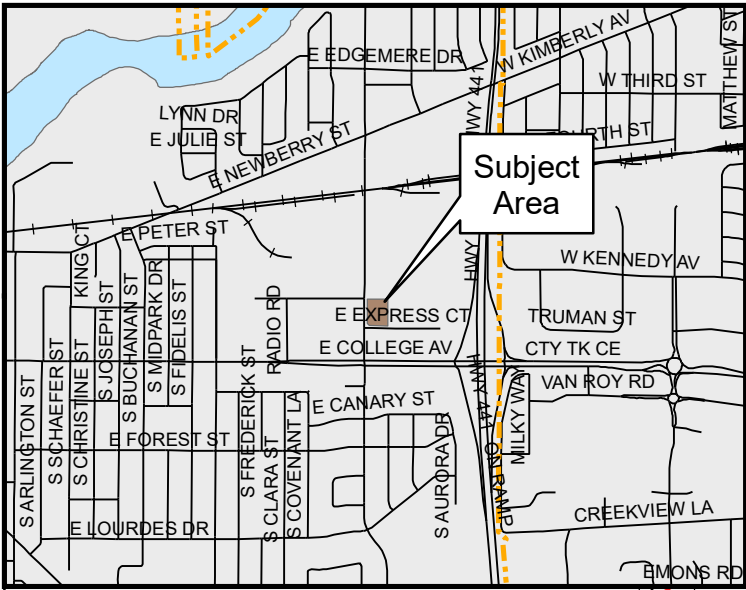
Any questions regarding this matter should be directed to Jessica Titel, Principal Planner, in the Community and Economic Development Department at 920-832-6476 or by email at [jessica.titel@appleton.org](mailto:jessica.titel@appleton.org).

CITY PLAN COMMISSION

COMMUNITY & ECONOMIC DEVELOPMENT  
CITY HALL - 100 NORTH APPLETON STREET  
APPLETON, WISCONSIN 54911-4799  
920-832-6468

*Reasonable accommodations for persons with disabilities will be made upon request and if feasible.*

Special Use Permit  
Car Wash  
E. Express Court  
Zoning Map





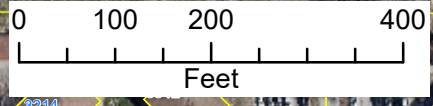
Special Use Permit  
Car Wash  
E. Express Court  
Aerial Map



Subject Area



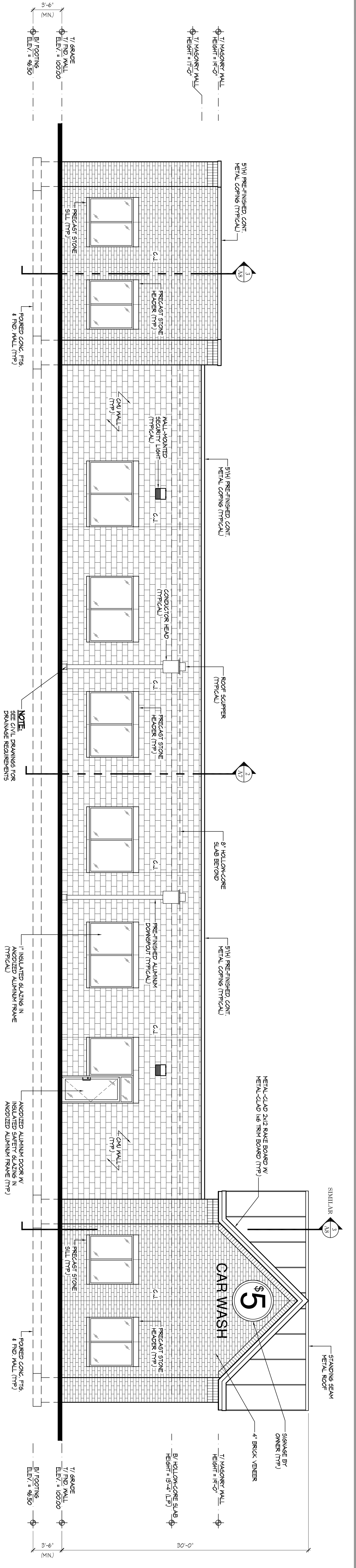
City Plan Commission  
6-8-22





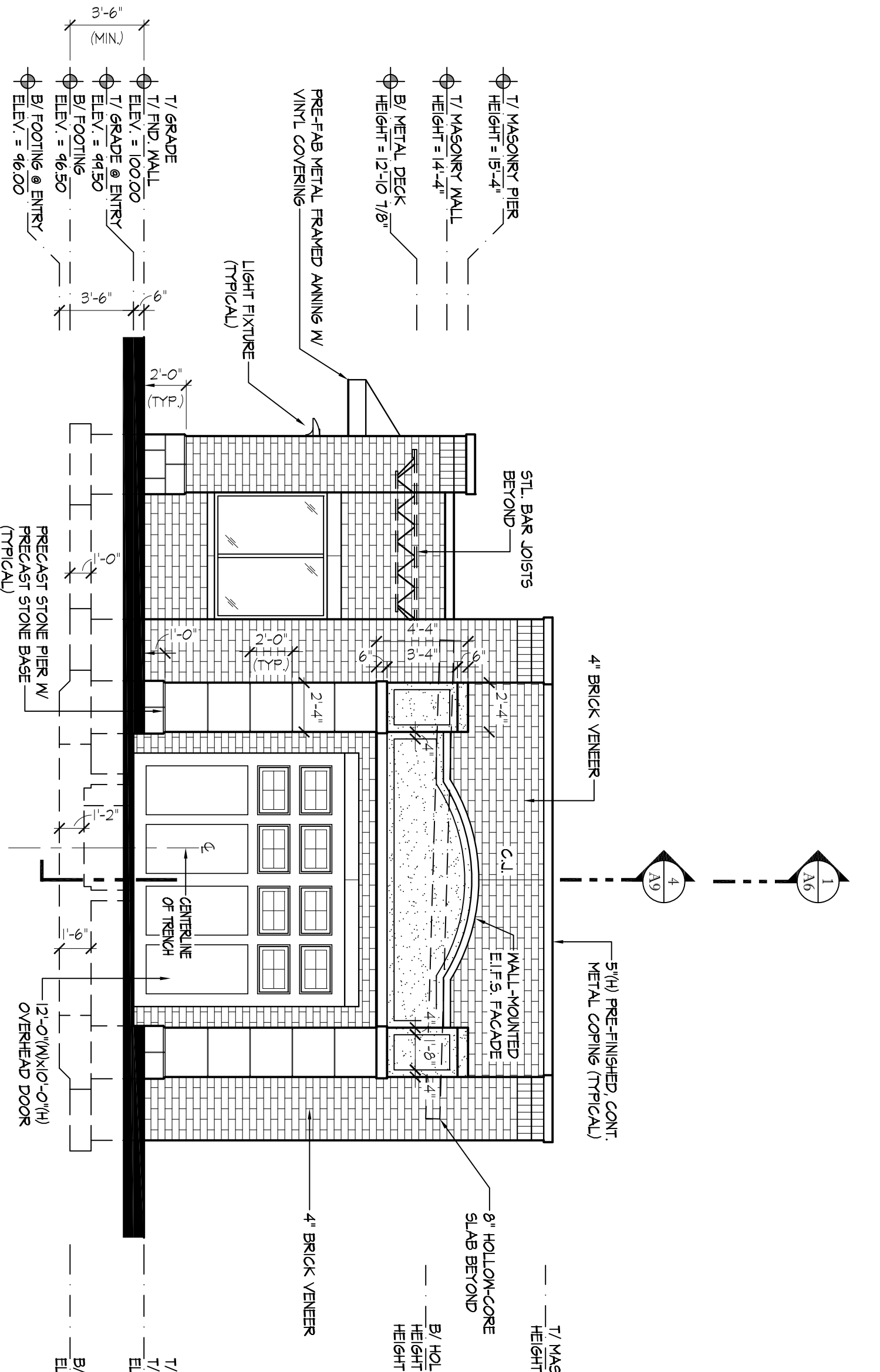






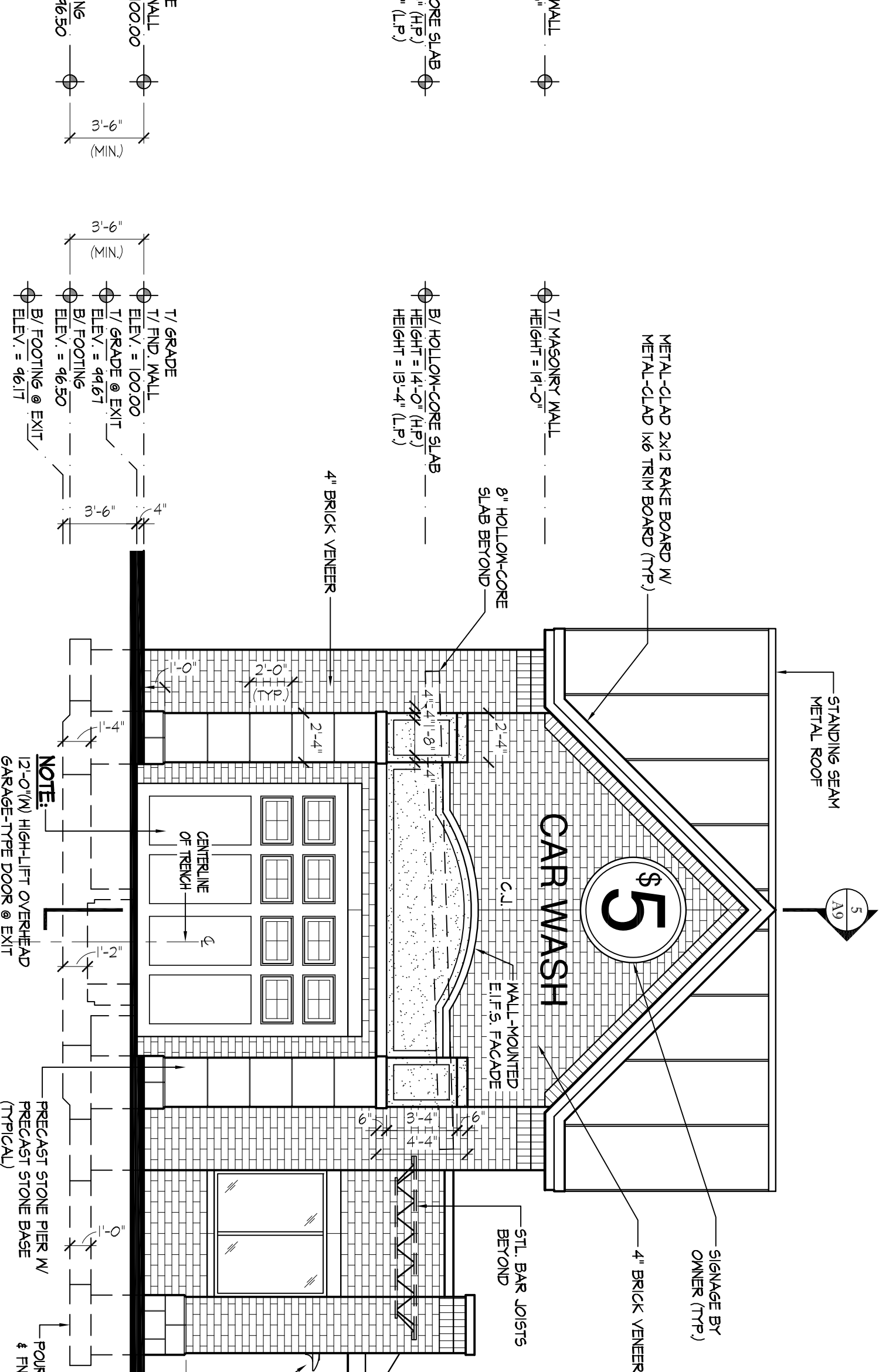
NORTH ELEVATION

SCALE: 3/16" = 1'-0"



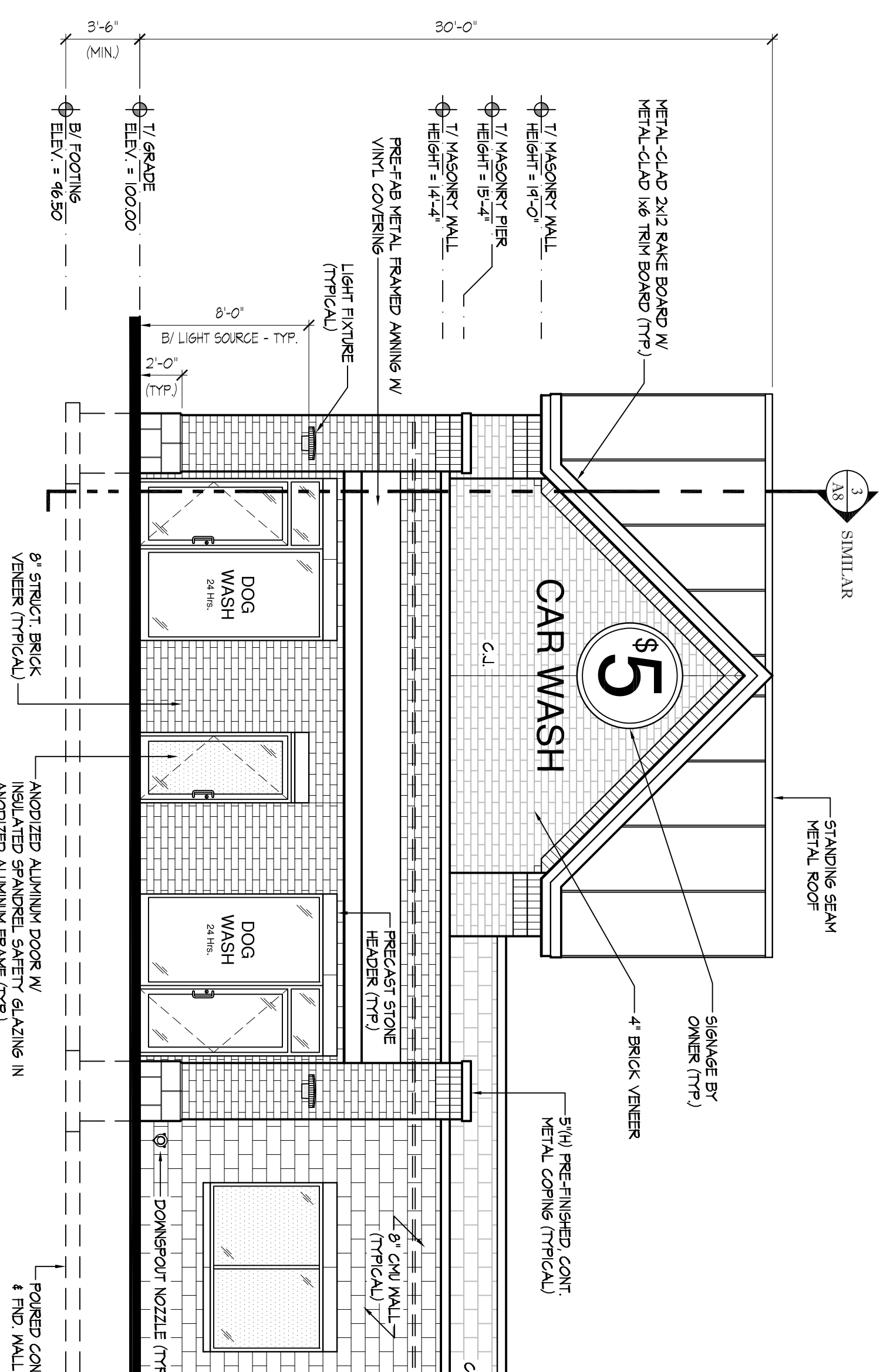
EAST ELEVATION

SCALE: 3/16" = 1'-0"



WEST ELEVATION

SCALE: 3/16" = 1'-0"



SOUTH ELEVATION

SCALE: 3/16" = 1'-0"

EXTERIOR FINISH NOTES

**THERMAL AND MOISTURE**  
 WEATHER BARRIER: TYVEK BRAND™  
 DRIPKIT (800) 446-4935  
 REBERIZED SHEET FLASHING: BTD 30 XL BUILDING TAPE  
 POINT-TO-POINT SEAL: (877) 211-4661  
 TRIPLE INSULATED GLAZING SYSTEMS  
 THERM-O-LINE™  
**EXTERIOR METALS AND FLASHING**  
 SHEET METAL FLASHINGS: PRE-FINISHED METALLIC-COATED STEEL SHEET AT EXPOSED AREAS  
 METAL FLASHINGS: 26 GA. ALUMINUM  
 PHYSICAL PROPERTIES AND COATING PERFORMANCE REQUIREMENTS OF AIAA 2005 COLOR  
 SELECTED FROM STANDARD RANGE  
 - BASE FLASHING: 26 GA.  
 - FLASHING RECEIVERS: 26 GA.  
 - BRK EDGES: 24 GA.  
 SOFFITS AND UNDERSETS OF EXTERIOR DELUGES: PRE-FORMED VENTED ALUMINUM PANELS  
 FROM MANUFACTURER'S STANDARD RANGE (800) 722-2525  
 PAC-CLOAD BY FETTERSON ALUMINUM (OR EQUIVALENT) COLOR AS SELECTED BY ARCHITECT  
 GUTTERS AND DOWNSPUTS: STAINLESS ALUMINUM (OR EQUIVALENT) (21) 522-5500  
 ROLLEE BY BRADSTAND BUILDING PRODUCTS (OR EQUIVALENT) (21) 522-5500

EXTERIOR FINISH SCHEDULE

TYPE	MANUFACTURER	SIZE (NOMINAL)	COLOR	WORKS COLOR / TYPE	CRN. CONT. DATE
BRICK	ENDICOTT	STRUCTURAL	19D	VANAL / TYPE N	SONBERSON
VENER	OR EQUAL	4" x 8" x 16"	19D	(SEE NOTE #2)	SONBERSON
CHW	19D	9" x 4" x 16"	19D	VANAL / TYPE N	SONBERSON
PRECAST	19D	SEE EXTERIOR ELEVATIONS	19D	(SEE NOTE #2)	N/A

**EXTERIOR WALLS & FINISH SYSTEM (EIFS)**

LOCATION / ID	MANUFACTURER	FINISH	COLOR	COMMENTS
FACE OF BRICK	BRICK	19D	19D	
CAR ENTRY / EXIT	EIFS	19D	19D	

METALS

LOCATION / ID	MANUFACTURER	TYPE	FINISH	COLOR
ROOF	PAC-CLOAD	PRE-FINISHED	STANDING SEAM	19D
SOFFITS / EAVES	PAC-CLOAD	PRE-FINISHED	FORMED	19D
GUTTER & DOWNSPOTS	PAC-CLOAD	PRE-FINISHED	ALUMINUM	19D
	OR EQUAL	PRE-FINISHED	ALUMINUM	19D

STORAGE GLAZING

LOCATION / ID	MANUFACTURER	COLOR / FINISH	DESCRIPTION
EXTERIOR DOORS & WINDOWS	KAMNER, EFCO OR EQUIVALENT	19D	GLASS OR CRAGLE 1" INSULATED GLAZING

**GENERAL STRUCTURAL NOTES**

- SEE STRUCTURAL DRAWINGS FOR SIZE & LOCATION OF:
  - STEEL BEAMS, JOISTS, ANGLES, PLATES, LINTELS & BEARING REQUIREMENTS
  - FORMING CONCRETE WALLS, SLABS & RETAINING
  - PRECAST HOLLOW-CORE SLAB BEARING CONDITIONS & BEARING REQUIREMENTS
  - BEARING REQUIREMENTS
- BRICK SOLID ON BRICK CORNER AT LOCATIONS INDICATED
- COORDINATE ARCHITECTURAL DRAWINGS WITH STRUCTURAL DRAWINGS

**NOTES**

- INSTALLERS TO VERIFY FINISH SYSTEMS FOR APPROVAL BY ARCHITECT PRIOR TO INSTALLATION.
- TYPE "S" METALS TO BE USED AT LOCATIONS WHERE MASONRY IS IN CONTACT WITH THE GROUND OR AT TOP OF FOUNDATION WALL.