



"... meeting community needs ... enhancing quality of life."

DEPARTMENT OF PUBLIC WORKS
Engineering Division – Traffic Section
2625 E. Glendale Avenue
Appleton, WI 54911
TEL (920) 832-5580
FAX (920) 832-5570

To: Municipal Services Committee
From: Mike Hardy, Assistant City Traffic Engineer
Date: April 27, 2018
Re: Proposed changes to parking restrictions on Commercial St and Spring St near Lincoln Elementary
Follow-Up to Six-Month Trial Period

In September of 2017, my office was contacted by the Principal and Police Liaison at Lincoln Elementary. They requested a change to the parking restrictions on Commercial Street and Spring Street along school property to better address their morning drop-offs and afternoon pick-ups. Concerns were expressed that the current situation does not provide enough curb space for this activity due to school faculty parking on the street.

In response, we implemented a six month trial of parking restriction changes that lasted from October 1st 2017 through April 1st 2018.

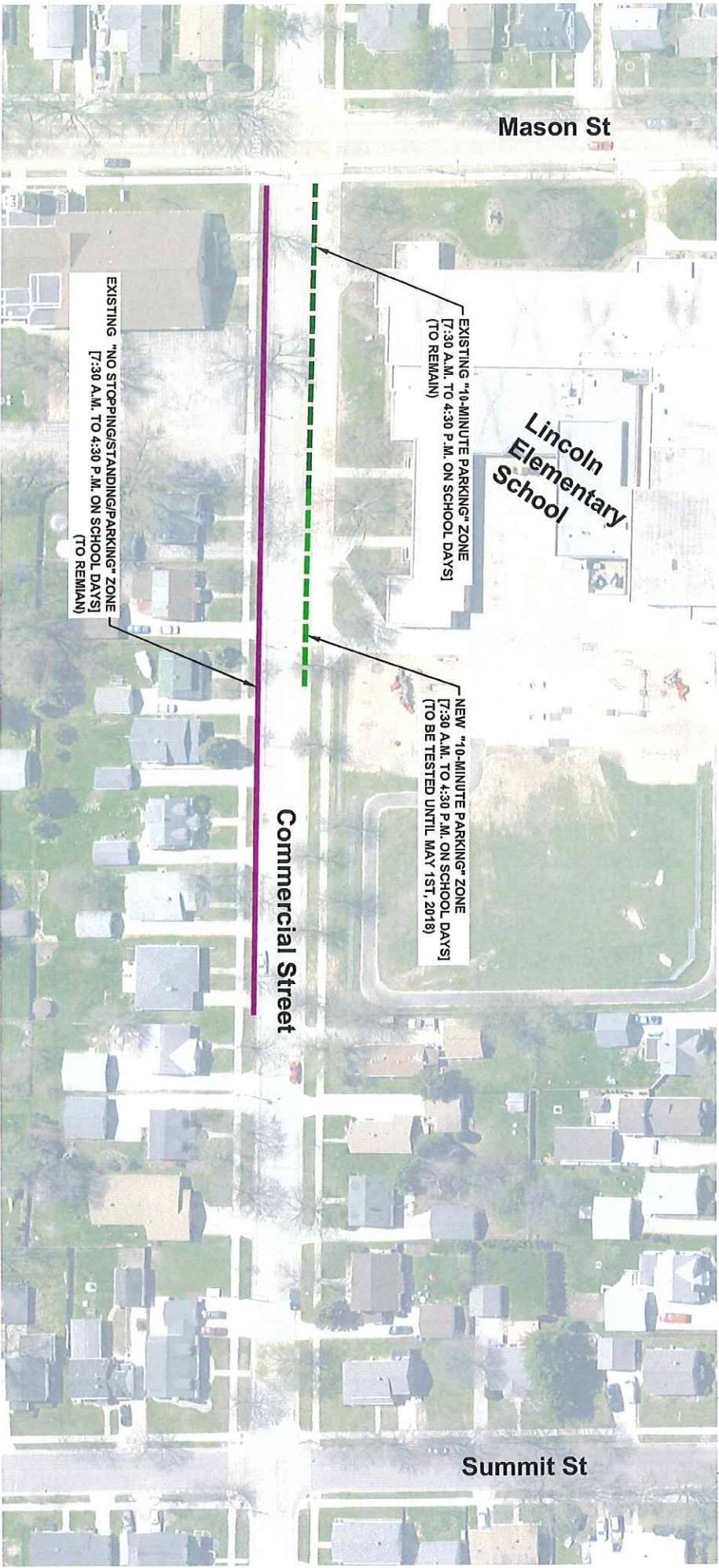
- On Commercial Street, we extended the existing *10-minute parking zone* (from 7:30 a.m. to 4:30 p.m. on school days) on the school side of the street further to the east by about 130 feet. See the Commercial Street illustration for addition detail.
- On Spring Street, we removed the existing *10-minute loading zone* (from 7:30 a.m. to 4:30 p.m. on school days) on the school side of the street, east of the existing Handicapped Parking, and replaced it with a *10-minute parking zone* (from 7:30 a.m. to 4:30 p.m. on school days). This new zone was also extended east an additional 85 feet, stopping 10 feet short of the existing fire hydrant. See the Spring Street illustration for addition detail.

The adjacent property owners and residents were mailed a notice letter about these trial changes in September of 2017. They were encouraged to provide feedback throughout the trial period. The Principal of Lincoln Elementary also went door to door at the beginning of the trial to discuss the school parking needs and requested changes.

After the trial period ended, a review of conditions was conducted with the Principal. Lincoln Elementary is happy with the changes, and supports making them permanent. We believe the trial has improved the morning drop-offs and afternoon pick-ups without any significant impacts to nearby residents with faculty parking forced a bit further to the east down the respective streets. No other feedback was received from the residents or property owners. As such we recommend making these changes permanent.

To accomplish this, the following ordinance action is required:

1. **Repeal Ord. 40-05:** "Ten minute parking on school days from 7:30 a.m. to 4:30 p.m. on the north side of Commercial Street from Mason Street to a point 208 feet east of Mason Street."
2. **Create:** "Parking be restricted to ten minutes on school days from 7:30 a.m. to 4:30 p.m., on the north side of Commercial Street from Mason Street to a point 340 feet east of Mason Street."
3. **Repeal Ord. 54-05:** "Ten-minute loading zone, from 7:30 a.m. to 4:30 p.m. on school days, on the south side of Spring Street, from a point 80 feet east of Mason Street to a point 300 feet east of Mason Street."
4. **Create:** "Parking be restricted to ten minutes on school days from 7:30 a.m. to 4:30 p.m., on the south side of Spring Street, from a point 80 feet east of Mason Street to a point 385 feet east of Mason Street."



Mason St

EXISTING "10-MINUTE PARKING" ZONE
[7:30 A.M. TO 4:30 P.M. ON SCHOOL DAYS]
(TO REMAIN)

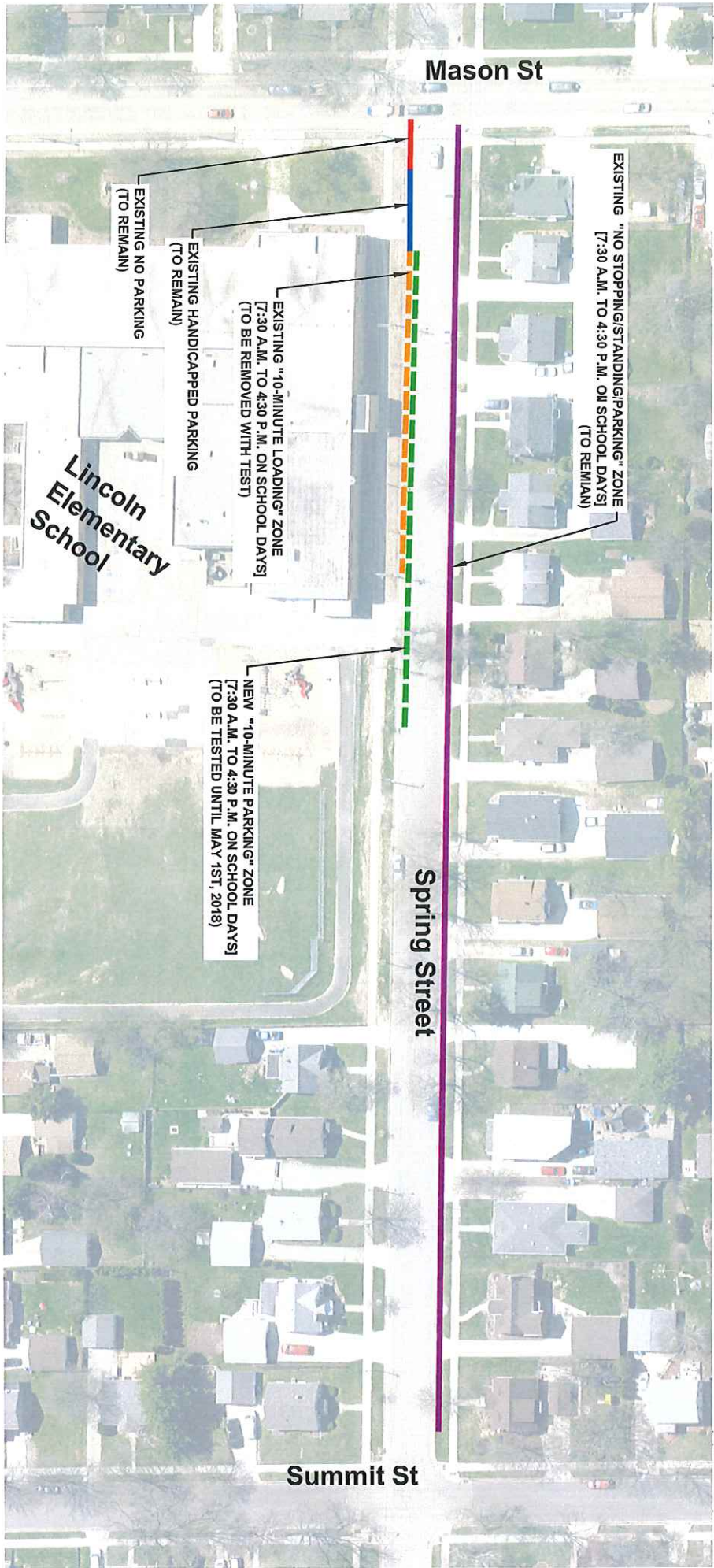
Lincoln
Elementary
School

NEW "10-MINUTE PARKING" ZONE
[7:30 A.M. TO 4:30 P.M. ON SCHOOL DAYS]
(TO BE TESTED UNTIL MAY 1ST, 2018)

Commercial Street

EXISTING "NO STOPPING/STANDING/PARKING" ZONE
[7:30 A.M. TO 4:30 P.M. ON SCHOOL DAYS]
(TO REMAIN)

Summit St



Mason St

EXISTING "NO STOPPING/STANDING/PARKING" ZONE
[7:30 A.M. TO 4:30 P.M. ON SCHOOL DAYS]
(TO REMAIN)

EXISTING NO PARKING
(TO REMAIN)

EXISTING HANDICAPPED PARKING
(TO REMAIN)

EXISTING "10-MINUTE LOADING" ZONE
[7:30 A.M. TO 4:30 P.M. ON SCHOOL DAYS]
(TO BE REMOVED WITH TEST)

Lincoln
Elementary
School

NEW "10-MINUTE PARKING" ZONE
[7:30 A.M. TO 4:30 P.M. ON SCHOOL DAYS]
(TO BE TESTED UNTIL MAY 1ST, 2018)

Spring Street

Summit St