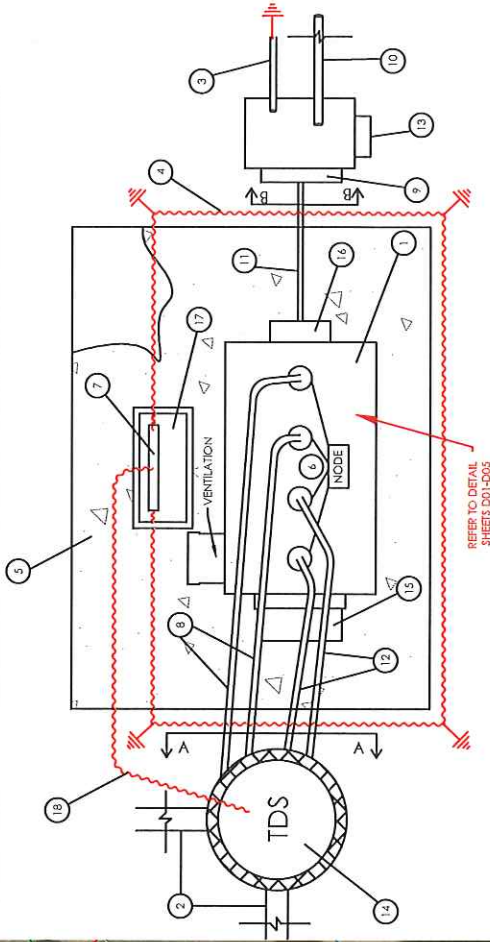
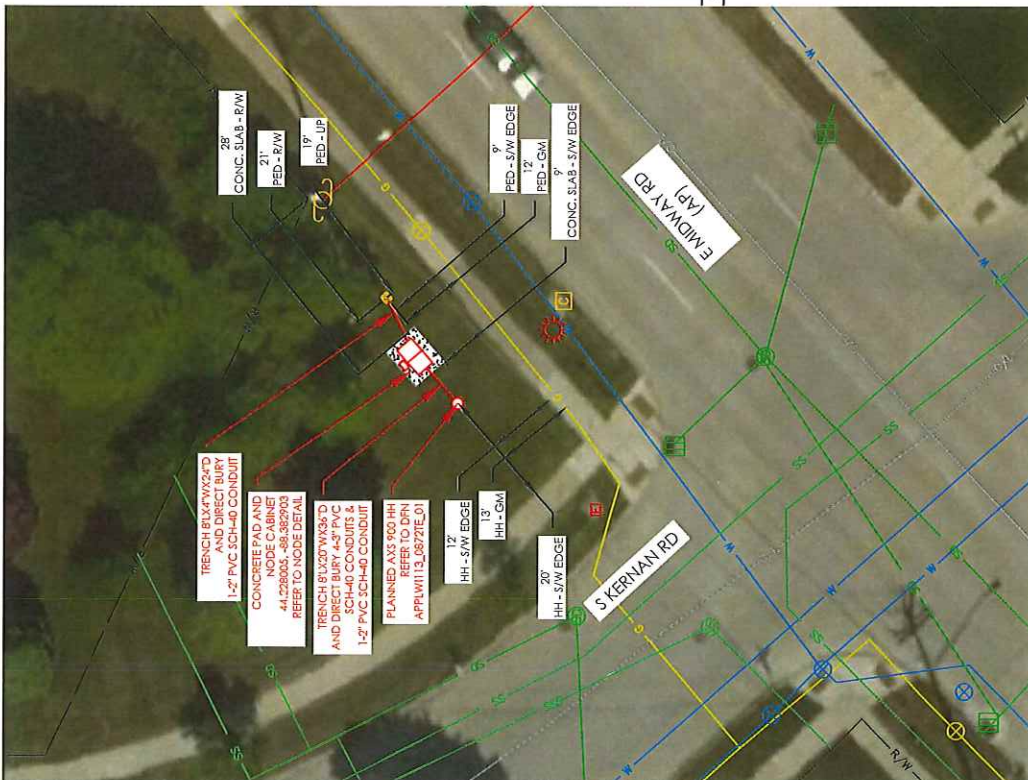


DIGGERS HOTLINE
Diggers Hotline, Inc.
 811 or 1-800-242-8511

- LEGEND:**
- 1) AM58P-6036-60RU-VIK - NODE CABINET
 - 2) PLANNED TRANSPORT FIBER IN CONDUIT
 - 3) 2" SERVING ENTRANCE, GROUNDED BY ELECTRICIAN
 - 4) #2 COPPER-TINNED GROUND WIRE 30" DEEP WITH FOUR CLAD GROUNDING RODS
 - 5) CONCRETE PAD - 72" x 88" x 6"
 - 6) 3" ENTRY TO NODE
 - 7) 1/2 (X10) ELECTRIC MOTION GROUND BAR
 - 8) 2(3") DUCT WITH FIBER STUB TAIL FROM NODE (W/SWEEPS)
 - 9) BA22 - STUB POLE FOR POWER PED
 - 10) 1(2") DUCT FOR POWER CABLE TO NODE ENTRY
 - 11) 2(3") VACANT DUCTS (W/SWEEPS)
 - 12) 2(3") VACANT DUCTS (W/SWEEPS)
 - 13) POWER METER FOR POWER PED
 - 14) AXS 900R HH - 39.3"Ø x 39.3"D
 - 15) HEATER ATTACHMENT
 - 16) POWER ATTACHMENT
 - 17) STRONGWELL-QUAZITE HH - 17.5" x 10.5" x 12.75"
 - 18) COATED GROUND WIRE



NODE DETAIL (AERIAL VIEW)
 SCALE: N/A



SITE PLAN
 SCALE: 1" = 30'



MATERIAL DESCRIPTION	QTY	ACTUAL
APPLW113_08721E_08721E.1.1.3		
APPLTECON_WI		
2\"/>		



REVISIONS	
DATE	DESCRIPTION
11/02/20	INITIAL DESIGN
	REV 1

SCALE	
SIZE B SHEET:	N/A
SIZE D SHEET:	N/A
SHEET:	C01 OF C02