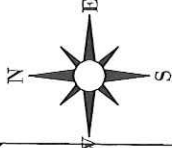
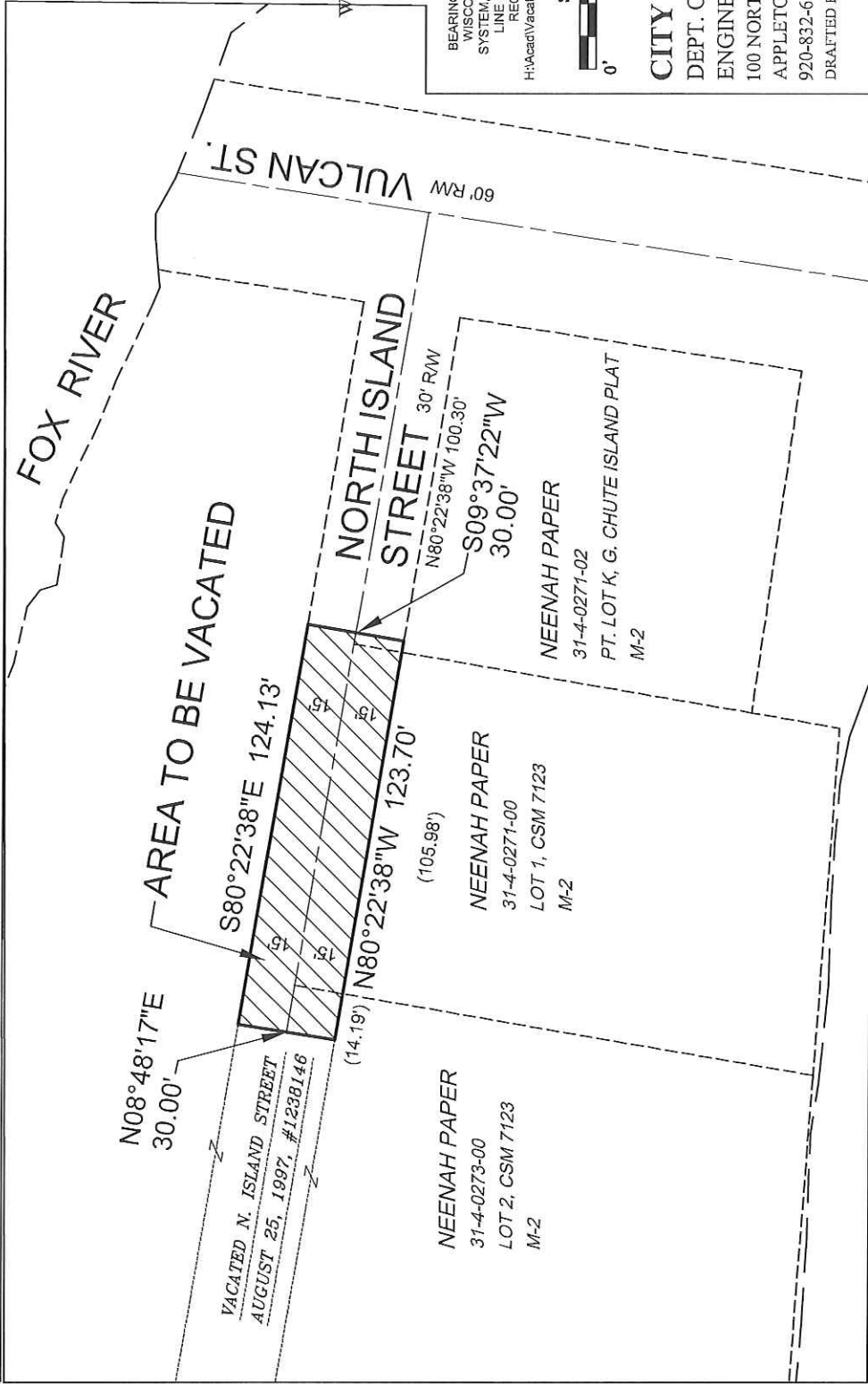


STREET VACATION

PART OF NORTH ISLAND STREET LYING BETWEEN LOTS K AND M OF THE GRAND CHUTE ISLAND PLAT, ALL ACCORDING TO THE RECORDED ASSESSOR'S PLAT OF THE CITY OF APPLETON, LOCATED IN THE NE 1/4 OF SECTION 35, TOWNSHIP 21 NORTH, RANGE 17 EAST, CITY OF APPLETON, OUTAGAMIE COUNTY, WISCONSIN.

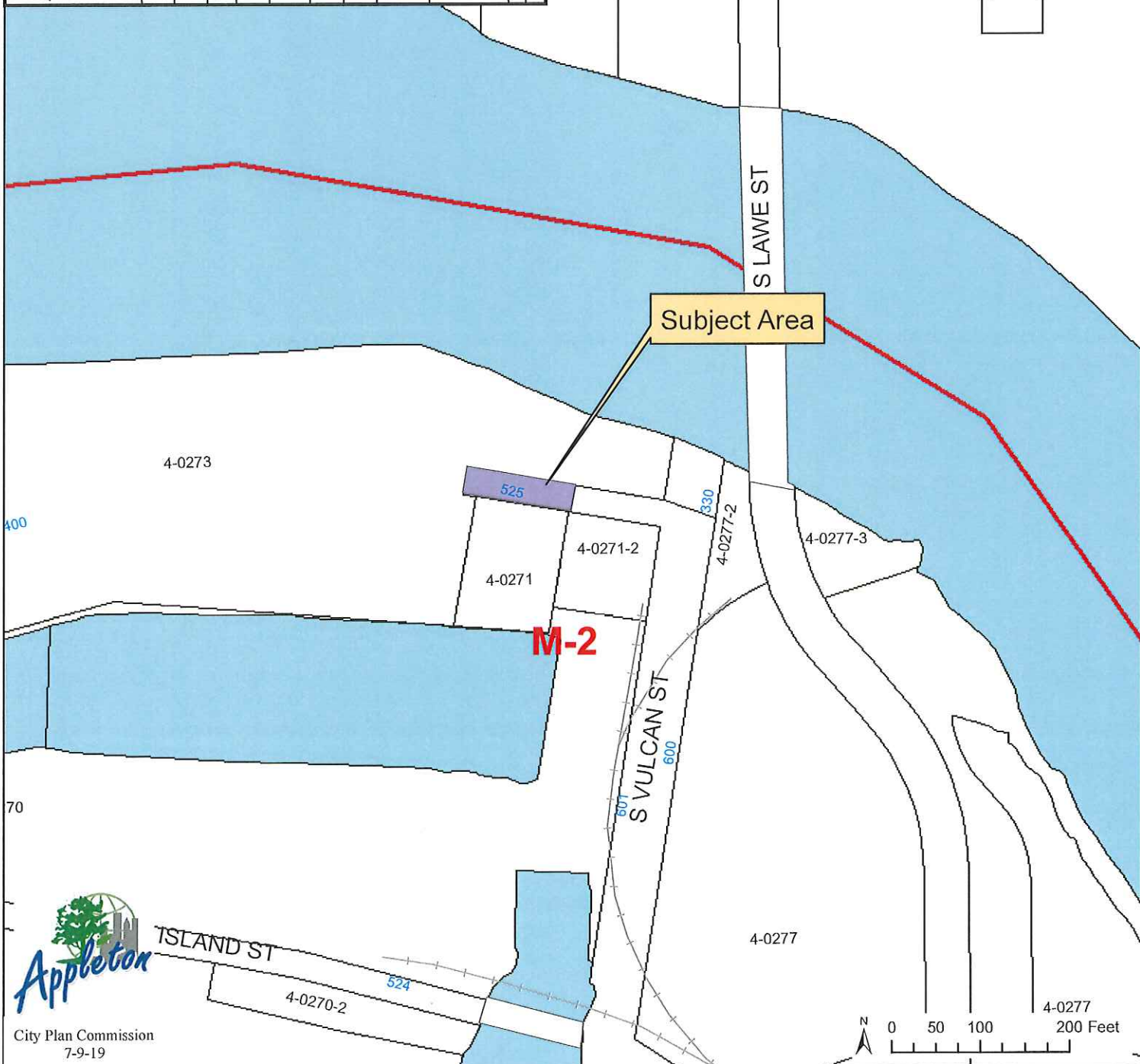
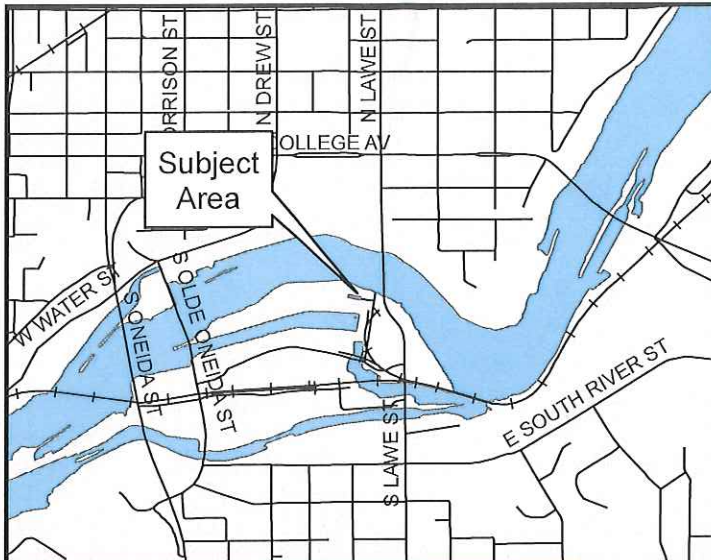


BEARINGS ARE REFERENCED TO THE WISCONSIN COUNTY COORDINATE SYSTEM, OUTAGAMIE COUNTY, NORTH LINE OF NORTH ISLAND STREET RECORDED AS N.80°22'38"W. H:\Acad\Vacation\2019\N_Island_Street_0627_2019



CITY OF APPLETON
 DEPT. OF PUBLIC WORKS
 ENGINEERING DIVISION
 100 NORTH APPLETON STREET
 APPLETON, WI 54911
 920-832-6474
 DRAFTED BY: T. KROMM

E. North Island Street Street Vacation Zoning Map



E. North Island Street
Street Vacation
Aerial Map

Subject Area



City Plan Commission
7-9-19