



© Skidmore, Owings & Merrill

**BOLDT**<sup>®</sup>  
BUILD BOLDLY

January 2024

## JANUARY REPORT

City of Appleton – Appleton Public Library

## KEY PROGRESS POINTS

- Recycling Program:
  - Boldt continues to recycle items.
  - Weights to date of all metals are 355,305 lbs.
  
- Progress:
  - Soil nails were installed for freight and passenger elevators.
  - Door install completed on Upper, Lower, and Ground Levels.
  - Top and bottom tracks were installed on Upper and Lower Levels.
  - Backfilling the footing and foundation wall has been completed at Addition.
  - Building the soffit at East skylight has been completed.
  - Pilings were installed at passenger elevator.
  - Interstate cut the viewing hole at Ground Level.
  - Began steel installation at skylight and freight elevator.
  - Started framing at Lower Level.
  - Continuing to install CMU at existing window openings.
  - MEPs continue laying out hanger locations at Ground and Upper Levels.
  - MEPFP continue to install piping and ductwork at Lower Level.
  - CMU walls on Ground Level and CMU install at freight elevator on Upper Level continues.
  - Forming and pouring elevator pit for freight elevator continues.
  - Framing acoustical ceilings areas continue.
  - Demolition continues on existing elevator shaft.

## CONDITIONS & SAFETY

- Site conditions still remain very good. Continuously monitoring our safety program and making sure workers and the public are safe.
- Snow and Ice Plan has been implemented. Snow removal and salting is occurring as needed. With the cold temperatures we have been limiting outside work to 15 minutes or less at a time.
- There have been no injuries to date.

**PROGRESS PHOTOS**



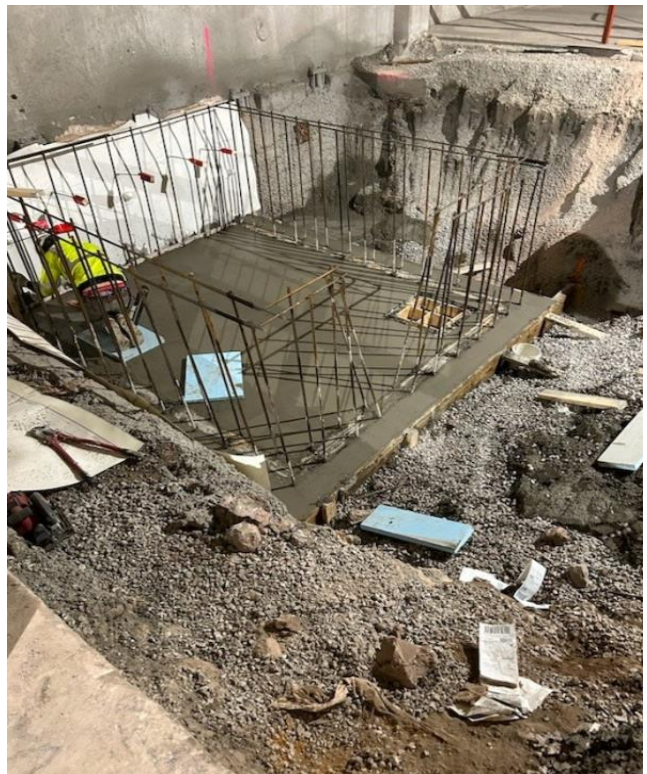
**Lower Level – Discovery Area**



**Children's Collection Area**

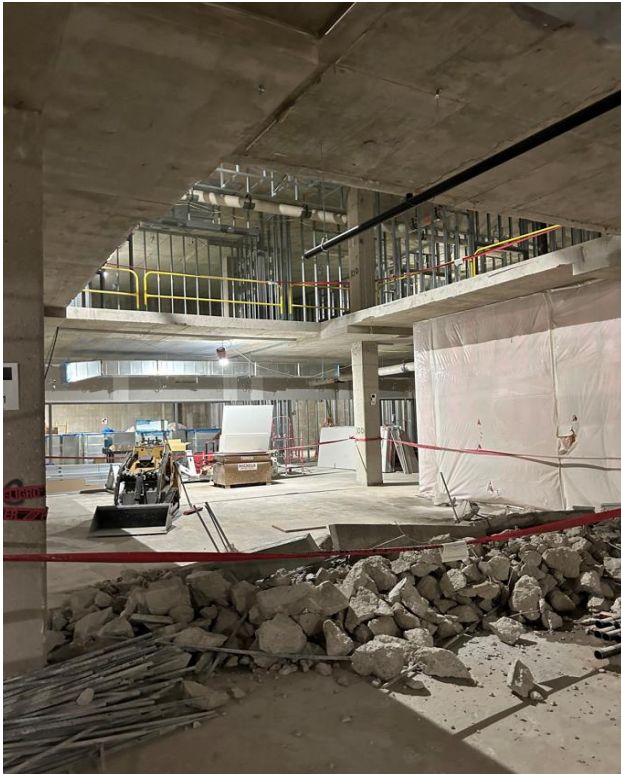


**Freight Elevator – Upper Level**

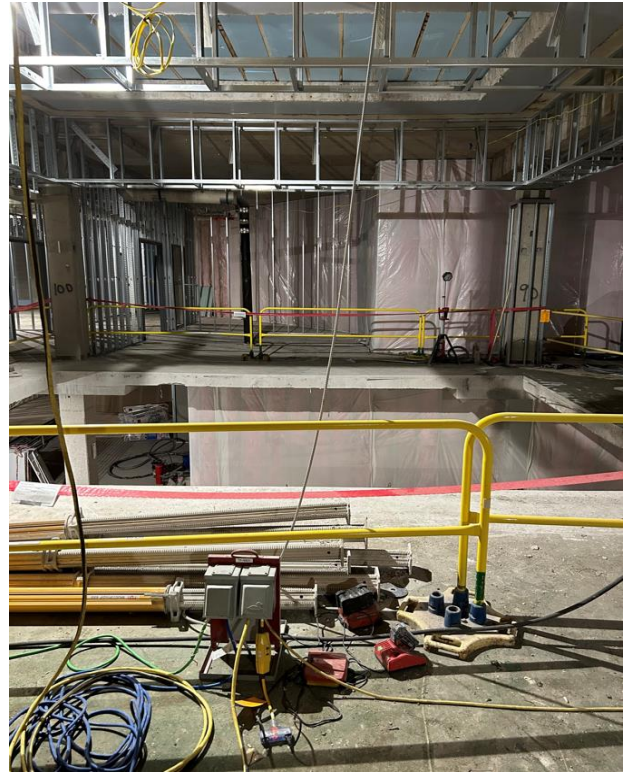


**Freight Elevator Pit**

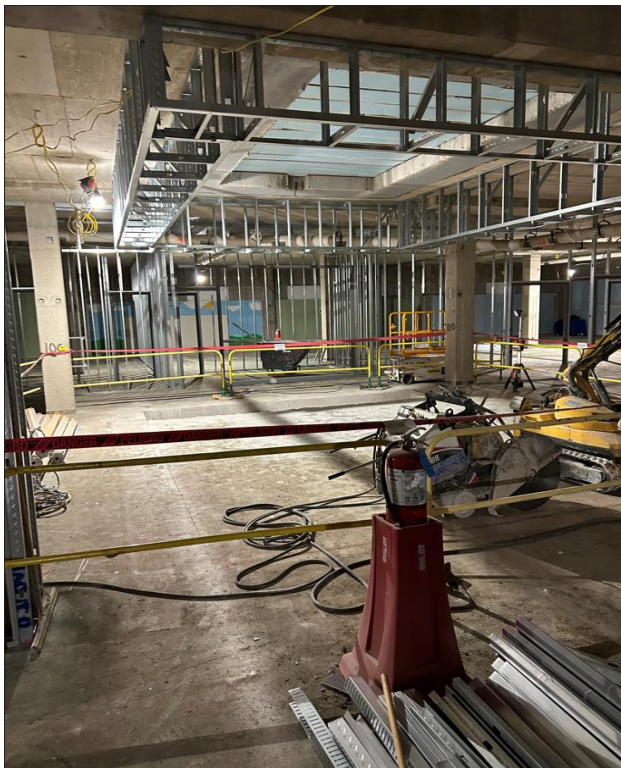
**PROGRESS PHOTOS**



**Floor Opening at Children's Area**



**Opening at Main Circulation**



**Skylight at Main Circulation Desk**



**Staff Corridor**