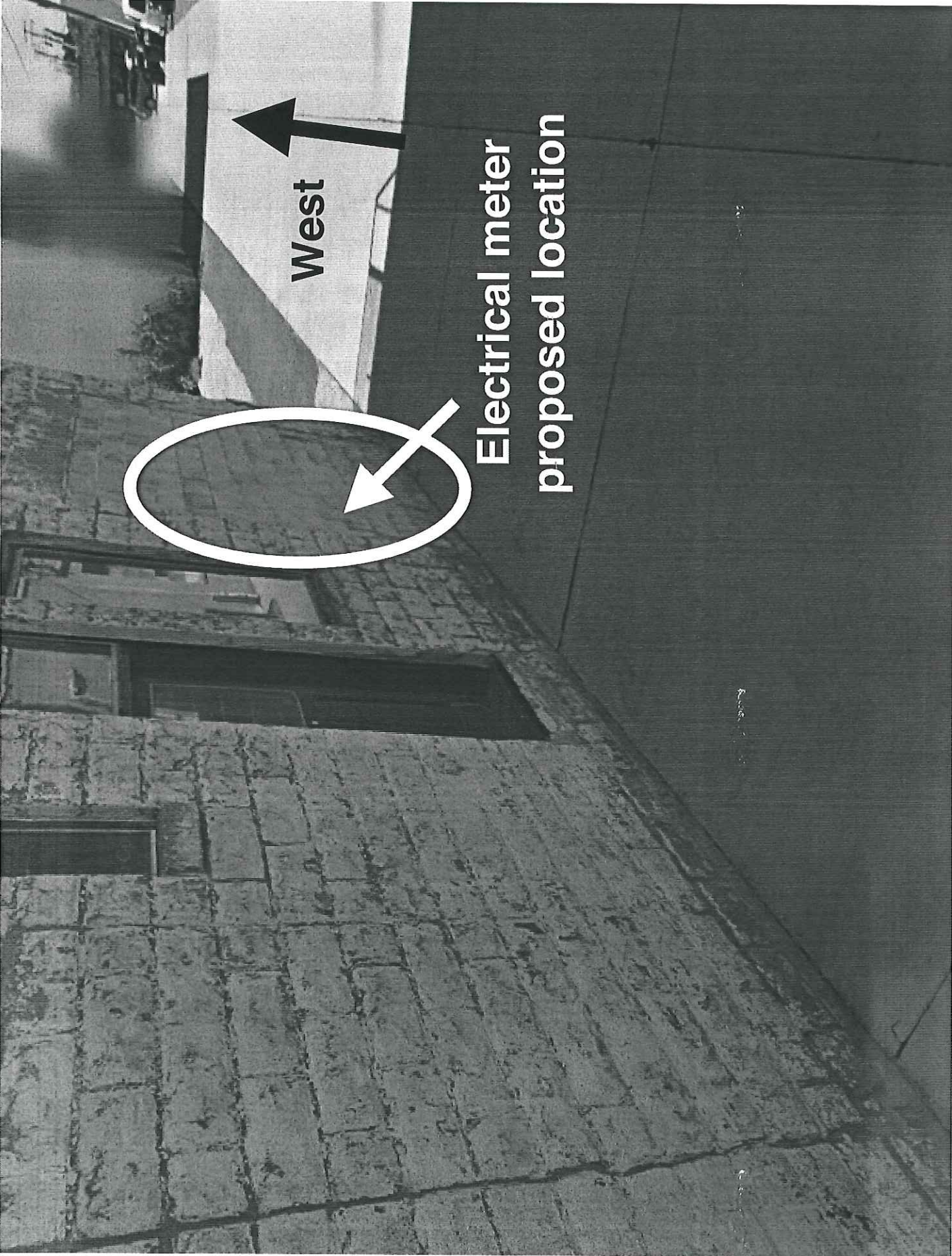


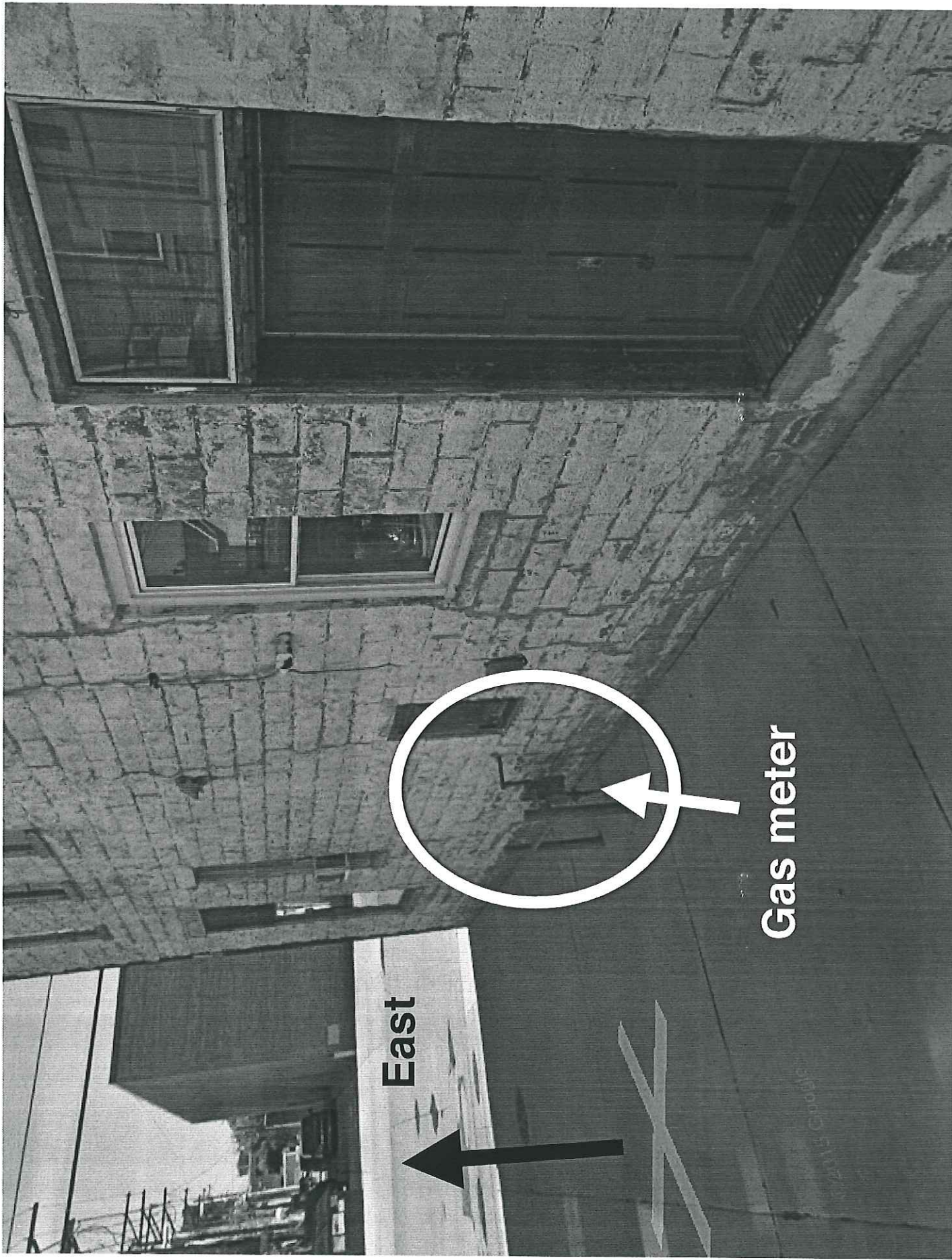
# Variance Request

- Who: McFleshman's Brewing Co.
- Where: 115 S State St, Appleton
- What: Install poles to protect new electrical and gas services
- Why: Service upgrades necessary to accommodate needs of brewery.



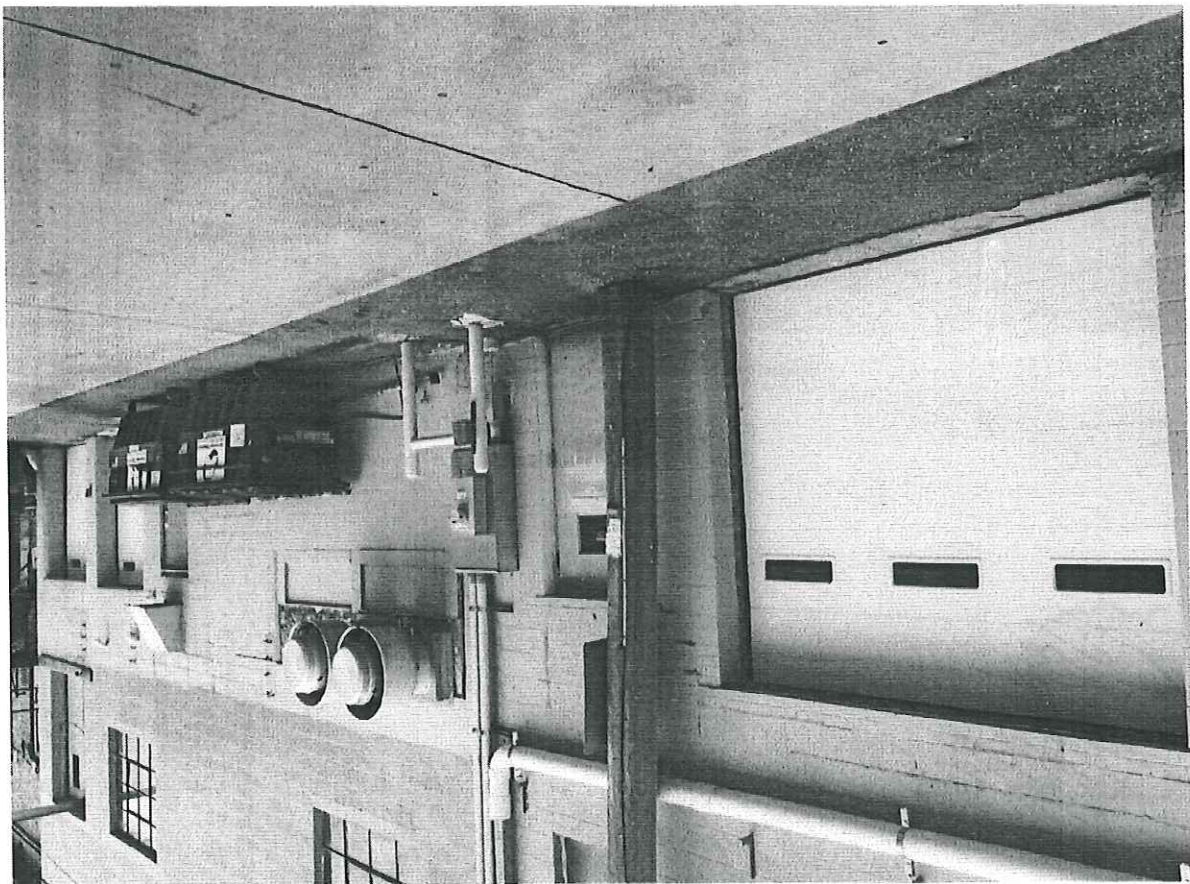
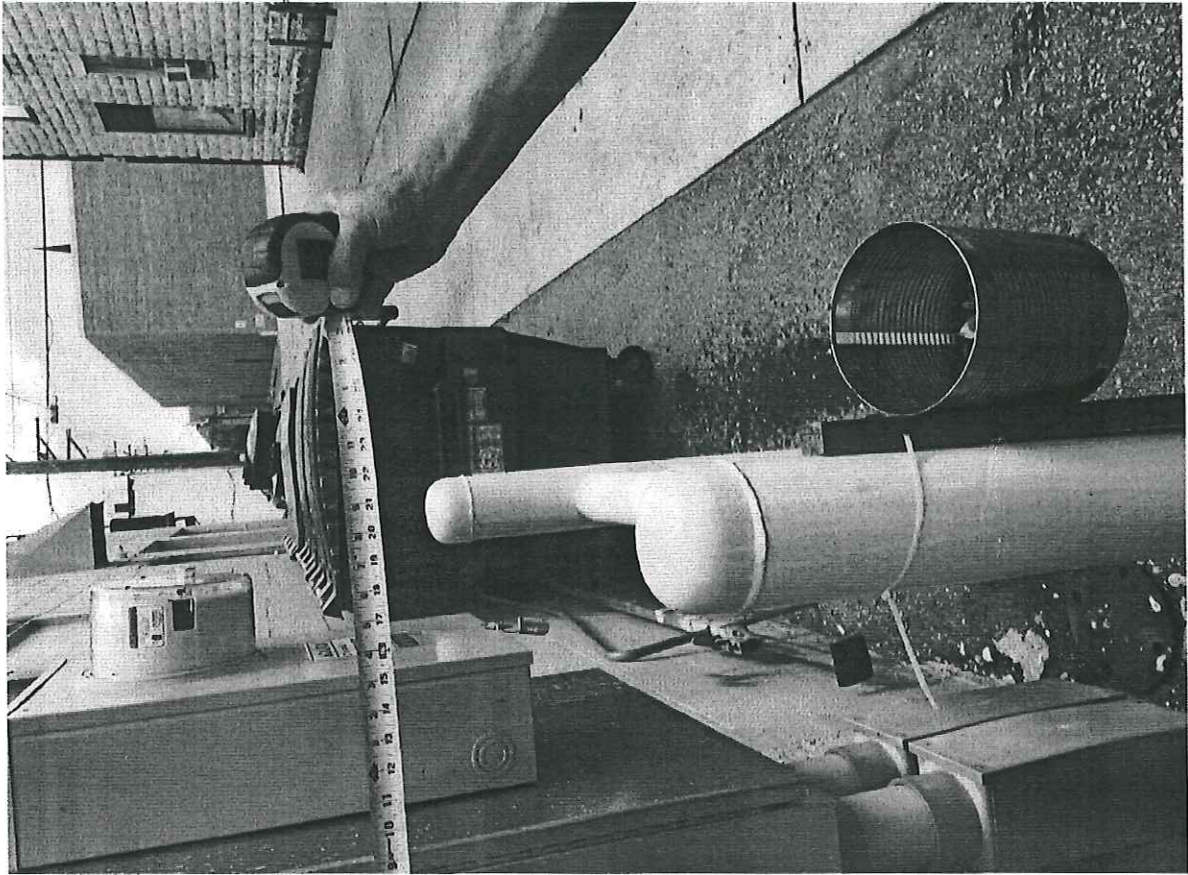
West

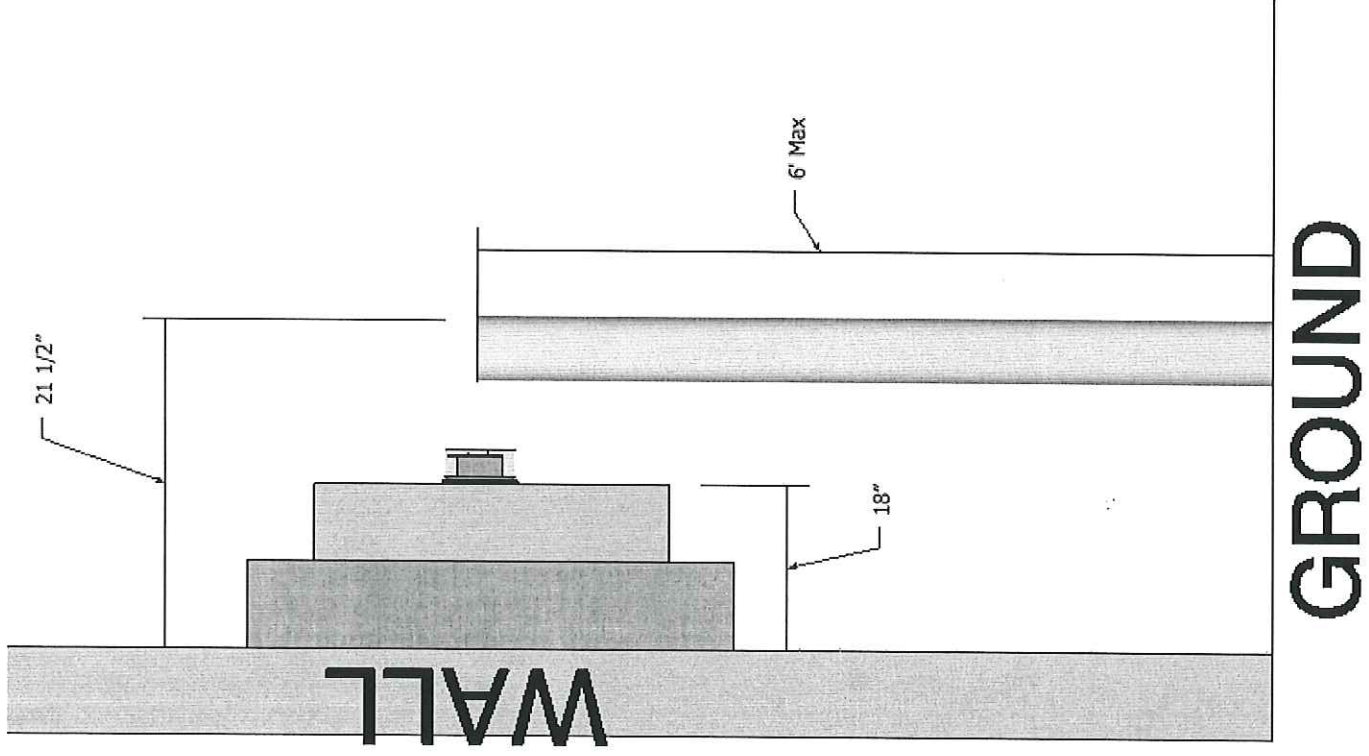
Electrical meter  
proposed location



Gas meter

East





—> (2) or (3) 4"-6" Poles  
so door can still swing  
open and be serviced

—> No bar allowed

—> Similarly with gas  
service