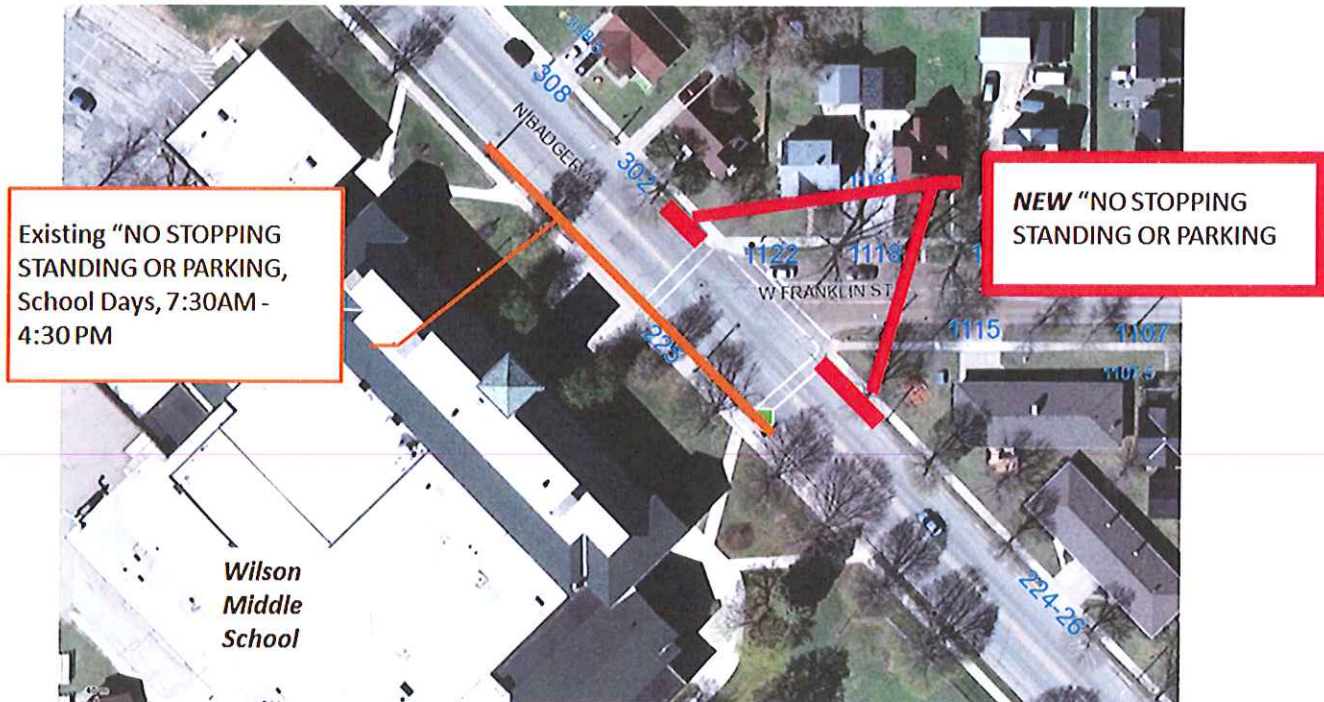


To: Municipal Services Committee
From: Michael S. Hardy, Assistant Traffic Engineer
Date: July 15, 2014
Re: New Parking Restriction on Badger Avenue, east side, at Franklin Street, near Wilson Middle School

The Traffic Section was recently contacted by a concerned citizen about challenges navigating the intersection of Badger Avenue and Franklin Street. The concern specifically noted difficulty proceeding from the STOP sign on Franklin Street when turning left or right, and cars are parked close to the corners on Badger Avenue. There are currently no parking restrictions on the east side of Badger Avenue near Franklin Street. This intersection is close to the main doors of Wilson Middle School, so it is very active with vehicles and pedestrians. This intersection also has uncommon alignment with the intersection of Badger Avenue intersecting Franklin Street at an angle. This area should be kept clear of stopped or parked cars to provide optimal sight line for drivers and pedestrians navigating the intersection.



Considering the complications described above, The Traffic Section recommends implementation of a new *No Stopping, Standing or Parking* restriction on the east side of Badger Avenue, near Franklin Street.

To accomplish this, the following ordinance action is required:

1. **Create:** "Stopping, standing and parking be prohibited on the east side of Badger Avenue, from a point 45' south of Franklin Street to a point 25' north of Franklin Street."