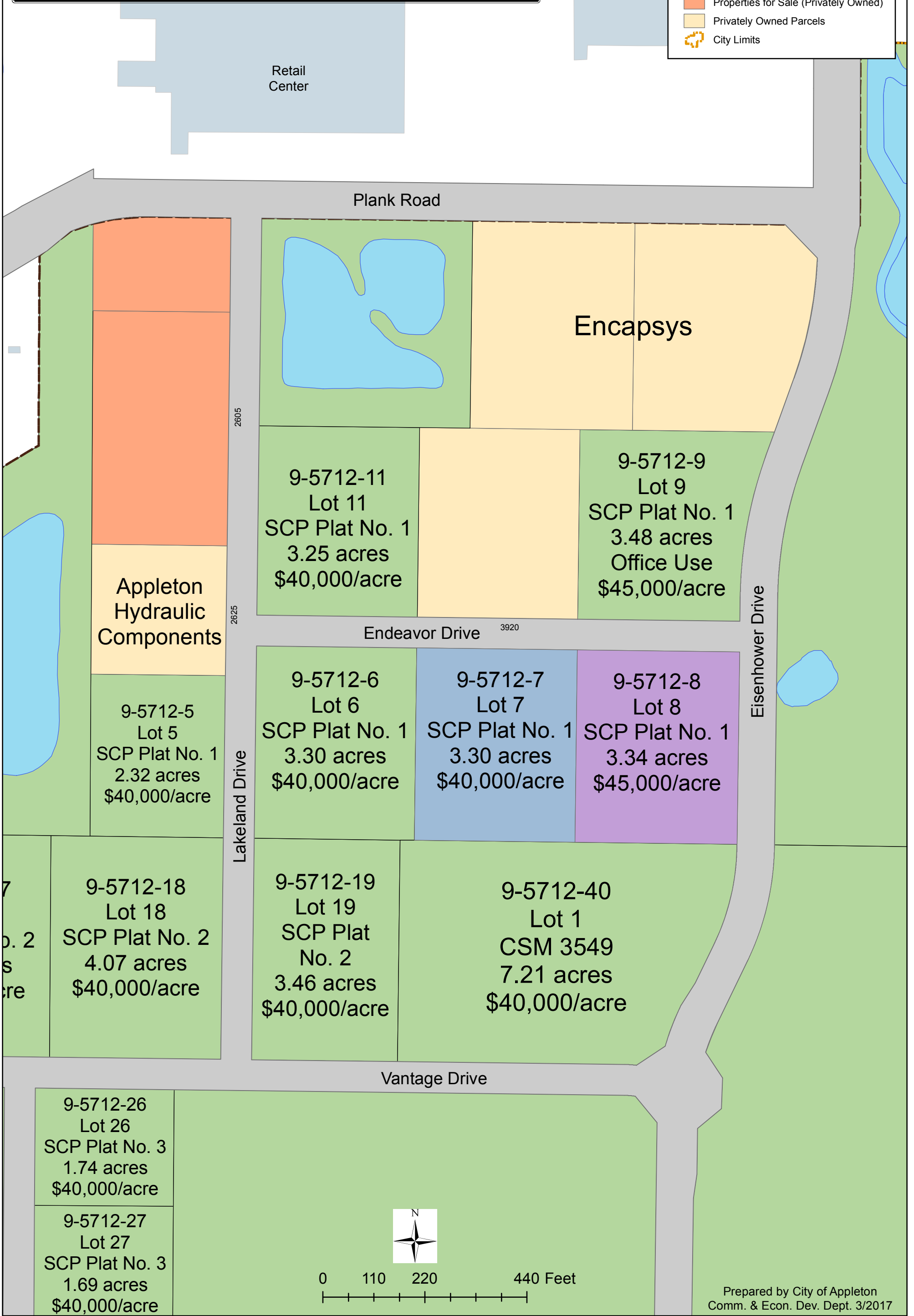


Southpoint Commerce Park Appleton, Wisconsin

Legend

- Subject Parcel
- Accepted Offer
- Park Boundary
- For Sale (City Owned)
- Properties for Sale (Privately Owned)
- Privately Owned Parcels
- City Limits



Retail Center

Plank Road

Encapsys

9-5712-11
Lot 11
SCP Plat No. 1
3.25 acres
\$40,000/acre

9-5712-9
Lot 9
SCP Plat No. 1
3.48 acres
Office Use
\$45,000/acre

Appleton
Hydraulic
Components

9-5712-5
Lot 5
SCP Plat No. 1
2.32 acres
\$40,000/acre

9-5712-6
Lot 6
SCP Plat No. 1
3.30 acres
\$40,000/acre

9-5712-7
Lot 7
SCP Plat No. 1
3.30 acres
\$40,000/acre

9-5712-8
Lot 8
SCP Plat No. 1
3.34 acres
\$45,000/acre

Eisenhower Drive

Lakeland Drive

9-5712-18
Lot 18
SCP Plat No. 2
4.07 acres
\$40,000/acre

9-5712-19
Lot 19
SCP Plat
No. 2
3.46 acres
\$40,000/acre

9-5712-40
Lot 1
CSM 3549
7.21 acres
\$40,000/acre

Vantage Drive

9-5712-26
Lot 26
SCP Plat No. 3
1.74 acres
\$40,000/acre

9-5712-27
Lot 27
SCP Plat No. 3
1.69 acres
\$40,000/acre



0 110 220 440 Feet