



"...meeting community needs...enhancing quality of life."

MEMO

TO: Municipal Services Committee

FROM: Paula Vandehey, Director of Public Works

DATE: June 5, 2013

SUBJECT: Alderperson Croatt's Resolution #10-R-13 regarding residential recycling carts.

#10-R-13/Croatt - "Whereas, the City of Appleton has adopted and begun implementing an automated recycling cart program for all Appleton residents, and Whereas, a major objective of the new recycling container program is to encourage more recycling and less garbage going to the landfill, and Whereas, the new program includes a charge of \$3/quarter and includes the mandatory acceptance of one (1) 96 gallon blue recycling container with no option for refusal, no option for additional containers, and no option for a smaller container. Now, Therefore, Be it Resolved, the City of Appleton Department of Public Works review all options available to enhance the program to encourage more recycling in the City of Appleton. This review to include (not limited to) looking into at least one smaller container option and an option for residents to acquire one additional container if they determine one is not sufficient for their needs. The results of the review to be reported out and discussed through the Municipal Services Committee and considered for budget deliberations with intended implementation of new recycling options beginning in 2014.

In response to this Resolution, and based on feedback staff has received early in the program implementation process, the following five areas of discussion follow:

1. **STORAGE.** Current City Ordinance Section 15-31 states: "Containers shall be returned to the point of storage no later than midnight the day of collection." If Council wishes to limit where the carts can be stored, one option would be to adopt ordinance language similar to the attached City of Oshkosh's "Solid Waste Storage Requirements."

STAFF RECOMMENDATION: No change for 2014.

2. **COLOR.** Blue was selected by staff for the cart color as it is the most common recycling cart color ordered and is the nationally recognized color for recycling. We felt it would be easily distinguished from the black refuse cart both by the property owner and the automated drivers collecting the carts in all weather and daylight conditions. Council could decide to transition out of the blue color to another color as carts are replaced in the future (10 year warranty on current blue carts). This decision would impact the cost and quantity of inventory.

STAFF RECOMMENDATION: No change for 2014.

3. **COST.** Some residents have shared frustration with having to pay a \$3 per quarter charge for the recycling carts. Council would need to determine a different funding mechanism to repay the loan if the Council adopted payment plan (discussed and voted on at several meetings in 2012) is no longer supported by Council.

STAFF RECOMMENDATION: No change for 2014.

4. **NUMBER OF CARTS.** Two different concerns with the number of carts have been shared by residents. The first is the desire to have a second cart. Outagamie County's contract with Inland Services for recycling collection is for one pick per residential address. The County promotes the following alternatives in lieu of an additional cart:

- Ask a neighbor if they have extra room in their cart for your recyclables.
- Bring the extra recyclables to the County drop off site located at 1419 Holland Road.
- Save extra recyclables until your next collection.
- A few large cardboard boxes may be flattened and cut to no larger than 3'x 3' and placed under the cart lid.

Inland Services has agreed to collect a second cart from properties, but they would be charged an additional fee.

STAFF RECOMMENDATION: Adopt proposed Residential Recycling Multiple Cart Policy.

A second concern is with multi-family homes (especially ones that were at one time a single family home converted to multi-family). Each of these residents have their own refuse container, so each was given a recycling container as well. One possible option could be to allow for a reduced number of recycling carts if a reduced number of refuse carts is also provided. Example: Current triplex has 3 refuse containers and 3 recycling containers for a total of 6 carts. Reduce refuse and recycling containers to 2 each for a total of 4 carts.

STAFF RECOMMENDATION: Adopt proposed Multi-Family Residential Recycling Cart Policy.

5. **SIZE.** The most common complaint staff has received is the desire to have a smaller cart size option. It is well documented why Council decided to go with one (96 gallon) cart size.

STAFF RECOMMENDATION: No change for 2014.

However, if Council would decide to provide an alternative size cart, staff recommends that the following occur:

- Purchase 2,500 - 60 gallon carts in 2014 for an estimated budget impact of \$150,000. Previous discussions were that a 35 gallon cart would not be adequate for a 2-week collection period. I am unaware of any community that offers that small of a cart for automated recycling. Outagamie County is actively investigating the expansion of plastics that could be recycled (see attached article).
- Smaller carts would be delivered to residents once a \$100 exchange fee was received for the smaller cart.
- Include in 2014 Budget storage rental for the estimated 2,500 - 95 gallon carts that would be exchanged for smaller carts.
- Include in 2014 Budget a Table of Organization Change to increase staff by 0.5 FTE's (approximately \$ 30,000) to manage the recycling cart exchange program. One full FTE was eliminated in the 2013 Budget with the knowledge of a one-cart size recycling program and elimination of free overflow.

- Include in 2014 Budget purchase of a pick-up truck with lift gate (\$35,000) to manage the recycling cart exchange program.

At a previous meeting the concept of residents purchasing their own cart was discussed. Based on the following issues, staff does not see this as a viable option:

- The carts purchased by the City meet a high specification for wind load and cart strength for hundreds of automated collections (wall strength and wear points for the automated truck collection arms, stronger hinged lid, stronger wheels and axles) and also include RFID's for data collection. The carts readily available at area stores do not meet this criteria.
- If carts are damaged by the collection truck, slip into the truck, etc. at this time they are replaced at Inland's expense. This would not be the case with these personal carts which will cause discontent in the future.
- The in-mold labeling for City of Appleton and the recycling do's and don'ts would not be on these carts.

STAFF RECOMMENDATION: Do not allow for purchase of carts at area stores.

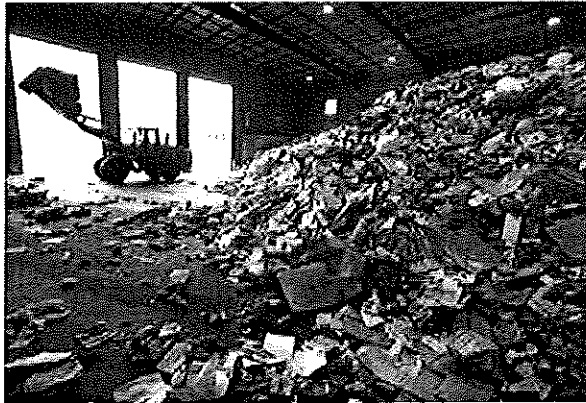
Please let me know if there is additional information you need to address this Resolution.

Attachment

Recycling upgrade pushed

Written by Jim Collar Post-Crescent Media
Jun. 04

postcrescent.com



The Tri-County Recycling Facility Department of Solid Waste in Appleton.

Purchase Image Zoom

The Tri-County Recycling Facility Department of Solid Waste in Appleton. / Wm. Glasheen/Post-Crescent Media

What they take, reject

Brown, Outagamie and Winnebago counties could soon expand recycling to include No. 3-No. 7 plastics and aseptic cartons, such as juice boxes.

Recyclables that are currently accepted:

- Paper, including newspaper, corrugated cardboard,

magazines and catalogs, junk mail and books.

- Aluminum, tin and certain aerosol cans.
- Glass food and beverage containers.
- Plastic narrow-necked bottles marked No. 1 and No. 2.

Prohibited items:

- Plastic engine oil, brake fluid, transmission fluid and wide mouth #2 plastic containers.
- Tissue paper and paper with food on it.
- Ceramics, clay, crystal drinking glasses, plate glass, windshields, laboratory glass, light bulbs, ovenware or window glass.
- Aerosol cans that held pesticides, pans, car parts, nails, screws, sheet metal or small appliances.

Source: Outagamie County Solid Waste Department

APPLETON — Solid waste officials say a proposed expansion of its recycling operations would add jobs and support Wisconsin business while reducing what Fox Valley residents have to toss into their trash bins.

The Outagamie County Board was given a presentation Tuesday on a proposal to expand recycling operations at the Tri-County Material Recovery Facility from one to two shifts. The Solid Waste Department will ask the board next month to approve five new job positions to make it happen. Partnering Brown and Winnebago counties expressed support and would share in those costs.

Jill Haygood, Outagamie County's recycling administrator, said expansion could allow for acceptance of numbers 3-7 plastic grades as well as recycling of aseptic containers such as juice cartons.

The community has long been asking for greater recycling capabilities, and the time is finally right, she said.

"We have not added to the anything to the curbside recycling stream since the Wisconsin state law passed in 1995," she said.

Officials say the proposal makes financial as well as environmental sense.

Officials said the \$10 million facility has been a solid revenue producer, having brought in \$12 million in gross surpluses since opening in 2009.

What comes into the facility is bailed and sold.

It's far cheaper for companies to buy aluminum than it is to pull it from the earth, said Joe Sloan, a consultant who's aided in studying expansion feasibility. The paper that comes into the facility is sold to Wisconsin mills, which convert it into new product.

Solid waste officials say the recyclables are out there and they could get better use of the facility with greater operational time.

Phil Stecker, Outagamie County director of solid waste, said the facility handles about 53,000 tons of recyclable items from the three-county area and has taken on additional tonnage from private haulers and other counties.

The facility is looking to take on further tonnage from beyond the three-county region with a goal of 88,000 tons per year. Tonnage has already been on the increase after the closure of a recycling company that operated in Green Bay and Rockford, Ill.

The facility is in the process of contracting with private haulers for long-term assurance of the tonnage necessary to support the second shift, he said.

Jobs would go beyond the five hires, which require board approval.

The second shift could create 24 positions for Valley Packaging Inc., which subcontracts.

Stecker said the plan would require a \$1.88 million investment in equipment that would include a second bailing system. That money, however, would come from surplus funds collected in the last four years rather than from the tax rolls.

Supervisors pressed for details on the potential risks associated the expansion.

Sloan said the biggest risk is the potential of having to take away newly created jobs should commodity prices or intake fall beneath what's needed to operate another shift. Neither is expected.

Haygood said 99 percent of the paper that comes through the facility goes to mills in northeastern Wisconsin, while 50 percent of plastics stay in the state. Nearly all of those plastics stay in the Midwest.

The facility has meant lesser hauling costs for companies that benefit the region and state, Stecker said.

It has also offset some of the cost of collecting recyclables.

Sloan reminded supervisors that recyclables once went to a landfill that carries great expense and doesn't provide any financial return.

"Your getting a double whammy," he said.

Supervisor Joy Hagen expressed support, noting the requests of her constituents. She said she's frequently heard from residents who want to recycle more than the current system allows.

"It's heartening to think people care about what's going into the earth, what's being recycled and what we can do with it," she said.

— Jim Collar: 920-993-1000, ext. 216, or jcollar@postcrescent.com. On Twitter [@JimCollar](https://twitter.com/JimCollar)

Paula Vandehey

From: Miller, Christine M. [Chris.Miller@outagamie.org]
Sent: Friday, May 31, 2013 11:12 AM
To: Jeff Elrick; Ellen Regan; Vicki Schneider(vicki@littlechutewi.org); Dave Vander Velden; Sheila Schultz; rhermus@vokimberly.org; Ryan Swick; Sean Hutchison (Hutchisons@combinedlocks.org); Paula Vandehey; Nathan Loper; Todd Nett; Carrie Minges; John Sundelius; Karen Koch; Patrick VandenHeuvel
Cc: Stecker, Philip P.; Jeff Patton; wi_clerk@inlandservice.com; Haygood, Jill E.; Adams, Patty M.; Elliott, Laurie A.; Nett, Alexandra H.; Chaltry, Brooke L.
Subject: Overflow Recyclables
Attachments: Revised overflow cart guide.doc

Hello Everyone,

I'm pleased to inform all communities who have automated recycling carts, that Inland Service will be getting fully automated trucks sometime in June, 2013. Once the trucks arrive, Inland drivers will no longer exit their vehicles to collect recyclables.

With that said, effective June 3rd, 2013, Inland Service will no longer pick up overflow recyclables outside the recycling carts. I know some communities have had the luxury of having overflow materials collected, which wasn't a concern to the drivers since they were exiting their vehicles to service the carts with the semi-automated collection method. I'm hoping the transition to "no overflow" will be somewhat painless. Thankfully this practice was never implemented in Appleton or Kaukauna, so hopefully your residents will not be concerned.

Attached is a guide that will help you inform your residents on ways to deal with overflow material. Please share this message with all staff who answer telephone calls and also place this information on your websites and facebook pages if possible.

Lastly, I'd also like to ask all of you to please check your websites and make sure all recycling information is correct and up-to-date. Here are some reminders I would like you to check on that we've had some residents questioning:

- Inland starts collection in your communities at 6:30 am with the exception of Appleton which has a start time of 4:30 am. Historically we have asked residents (other than Appleton) to set out their recyclables either the night before or by **6:00 am** the day of collection.
- Recyclables must not be placed in plastic bags.
- When there is a Holiday that disrupts recycling collection, as this past Monday did with Memorial Day, historically collection has been pushed to the next collection day with Friday's collection occurring on Saturday. Could you please put information in your newsletters and also display this message on your websites. An example of what to say might be similar to our message:

ATTENTION: Recycling Collection

Due to the Memorial Day Holiday on Monday, May 27th, recycling collection will push one day. Monday's collection will occur on Tuesday, Tuesday's collection will occur on Wednesday, Wednesday's collection will occur on Thursday, Thursday's collection will occur on Friday and Friday's collection will occur on Saturday.

Thank you for your continued cooperation with the recycling program! Be proud to know your communities are doing a top notch job being environmental stewards and leaders in the Fox Cities.

Please let me know if you have any questions and concerns. Have a great weekend!

Christine Miller
Outagamie County Recycling Coordinator
920-968-5721
www.RecycleMoreOutagamie.org

Single-Stream Recycling Cart Guide

- **Do not** place recyclables in **plastic bags**
- **Do not** place trash in your recycling cart
- **All recyclables must fit loosely into your cart with the lid closed**
- Be sure to "break down" and flatten boxboard and cardboard boxes. A **few** large cardboard boxes may be flattened and cut to no larger than 3 ft X 3 ft and placed under the lid of the cart
- Crush your cans, plastic jugs and bottles
- For **overflow** recyclables:
 1. Save for a future collection event
 2. Ask a neighbor if they have extra room in their cart
 3. Bring to County's free drop off site:
1919 Holland Rd, Appleton
Monday-Friday 7am-3:30pm
Saturdays 7am-11am



www.RecycleMoreOutagamie.org