

WE Energies Trail

The WE Energies trail is a 10,415-foot bike and pedestrian path connecting Oneida Street to Eisenhower Drive. The trail follows an old rail corridor connecting to local bike and pedestrian accommodations around Horizons Elementary School. Bike and pedestrian upgrades will be made at the intersection of Lake Park Road and Schaefer Circle to safely transition users. The trail continues from Lake Park Road and connects at Eisenhower Drive. The walkway is ADA compliant and provides access for both transportation and recreational users.

PHASE I (WEST)

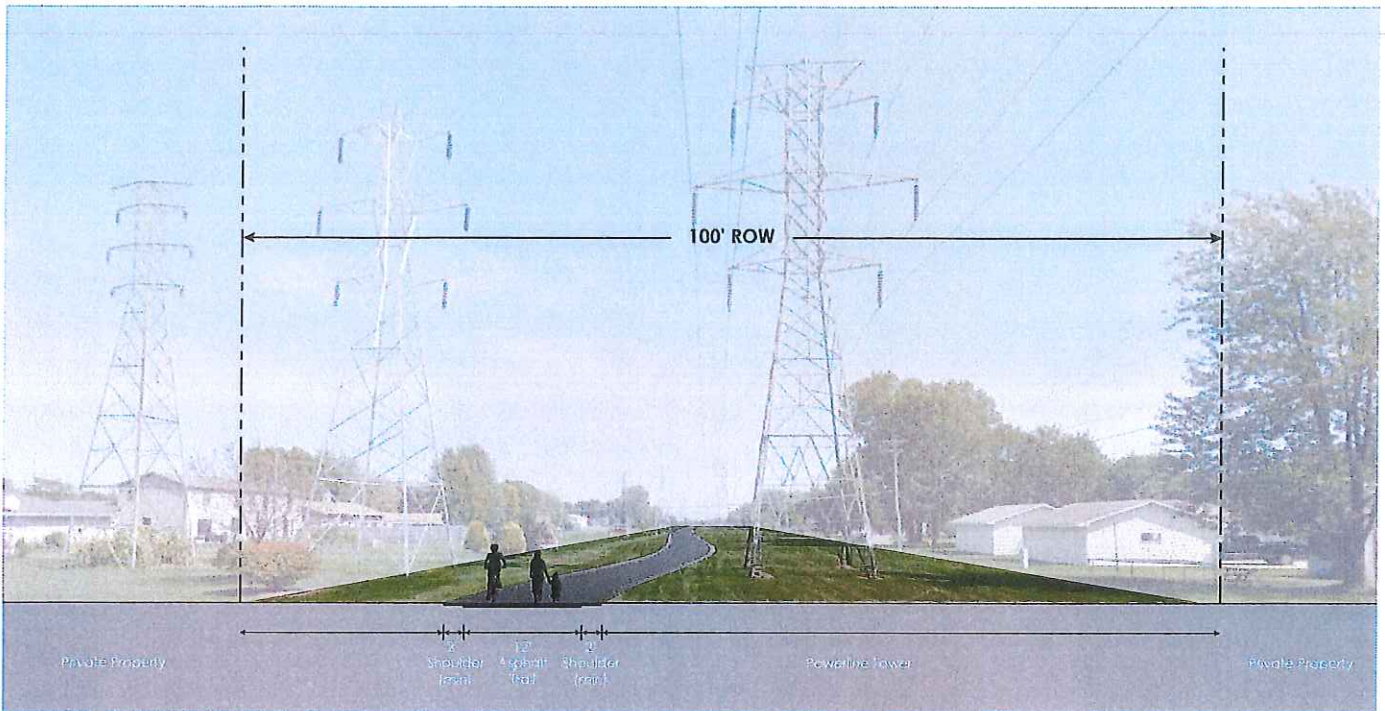


PHASE II (EAST)

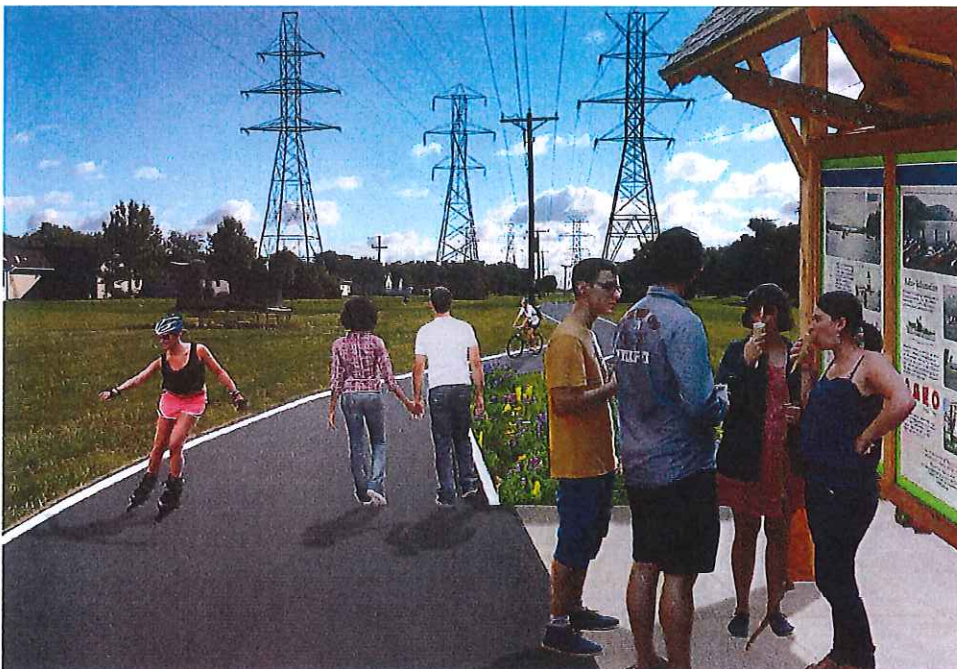


CHALLENGES

- **Utilities:** Existing ATC and WE Energies transmission and power poles run along the corridor of this trail. Coordination with these stakeholders has been established and they are supportive of the project. Easements will be required for WE Energies West (Wheatfield Drive to Schaefer Street). Modifications to existing easements will be required for WE Energies East (Lake Park Road to Eisenhower Drive).
- **Property Ownership:** ATC has requested a 20' offset from their facilities. Along the corridor, there are locations at which we cannot satisfy the ATC offset and remain outside resident property lines. Ongoing communication with ATC to negotiate offset requirement.
- **Slopes:** No concerns at this time.
- **Stormwater Management:** Given the trail length and disturbances, Best Management Practices (BMP's) and stormwater facilities will need to be provided.
- This trail will not be lighted, per ATC and WE Energies request. This trail will need to be constructed to accommodate utility trucks and is currently modeled with a more robust section.
- Connection to the west at Oneida Street and Roeland Avenue will require coordination with WisDOT, who is currently designing this intersection. At the southeast corner of this intersection is an ATC substation. To the north of this substation is a 6.5 foot terrace and 5 foot sidewalk - any bike and pedestrian accommodations would have to be placed in this area.
- The connection between Schaefer Street and the Schaefer Circle connection will consist of on-street bicycle accommodations and use of existing sidewalks for pedestrians.
- A trail connection will be established at the East end of Schaefer Circle. A 10-foot curb cut will be placed and this portion of the trail will merge into the existing sidewalk. The existing sidewalk will be widened to 10-foot bike and pedestrian accommodation.
- The round-a-bout at Plank Road and Lake Park road will connect WE Energies West to WE Energies East. Bike and pedestrian accommodations will extend from the southeast leg of the roundabout to the WE Energies East trail. Trail alignment will need to be adjusted around existing utility facilities
- WE Energies West will connect at Eisenhower Drive as part of the City of Appleton 2017 design utilizing design best practice.



Above: Section showing relationship of trail to powerline towers and adjacent properties.



PERMITTING STRATEGY

The following list of agencies will need to be engaged throughout the design and permitting process:

- » Utilities with facilities along corridor
- » Real Estate