



"... meeting community needs ... enhancing quality of life."

DEPARTMENT OF PUBLIC WORKS
Engineering Division – Traffic Section
2625 E. Glendale Avenue
Appleton, WI 54911
TEL (920) 832-5580
FAX (920) 832-5570

To: Municipal Services Committee
From: Eric Lom, City Traffic Engineer
Date: March 5, 2019
Re: Parking changes related to Evergreen Dr bike lane retrofit project (Haymeadow to Meade)

The *Evergreen Drive Bike Lane Retrofit Project* (from Haymeadow Avenue to Meade Street) was included in the 2019 budget and is scheduled to occur this summer in conjunction with the planned roadway urbanization project that will take place to the west (from Richmond Street to Haymeadow Avenue). This memo addresses the parking restrictions that are necessary to implement this Council-approved project.

Additionally, a letter was mailed to affected property owners which provides more detail about the project. It is attached for reference.

The following ordinance action is required:

1. **Create:** "Parking be prohibited on Evergreen Drive from Haymeadow Avenue to Meade Street."



"...meeting community needs...enhancing quality of life."

DEPARTMENT OF PUBLIC WORKS
Engineering Division – Traffic Section
2625 E. Glendale Avenue
Appleton, WI 54911
TEL (920) 832-5580
FAX (920) 832-5570

March 1, 2019

Dear Evergreen Drive property owner,

For over a decade now, the City of Appleton has been working to identify opportunities to improve bicycle and pedestrian safety throughout the city. Among those efforts was the development of the *City of Appleton Trails Master Plan*. This plan was unanimously approved by the Common Council and provides a framework for future investments in a system of interconnected bicycle and pedestrian facilities throughout the City. *You can view this plan at <https://goo.gl/tMA7Pj> or by scanning the QR code below.*

This spring, we will be upgrading the west end of Evergreen Drive (Richmond St to Haymeadow Ave) to match the standards of our other secondary streets, adding lighting, bike lanes, and sidewalks. Our trails master plan also calls for the east end of Evergreen Drive (Haymeadow Ave to Meade St) to function as an important link for bicycles and pedestrians between the existing and future trails and bike lanes in the area. To accomplish this, three separate projects are planned for 2019:

1. Richmond St to Haymeadow Ave: This portion of Evergreen Dr will be paved with concrete (with curb and gutter) and will include street lights, bike lanes, a 5-foot sidewalk on the south side, and a 10-foot trail on the north side. A new crosswalk will also be added across Richmond St to connect to the existing trail by Kwik Trip. No on-street parking will be allowed.
2. Haymeadow Ave to Meade St: This segment of the roadway is planned to be striped and signed for bike lanes in both directions. To accomplish this, parking is planned to be removed from both sides of the roadway. The City's Municipal Services Committee will discuss this issue at their next meeting (4:30 p.m. on Monday, March 11th, 6th floor of City Center Building, 100 N. Appleton St.).
3. Evergreen Dr / Meade St Intersection: A push-button activated pedestrian crossing system (with strobe lights) will be installed to allow bicyclists and pedestrians to more safely cross Meade Street and access trails to the north, south and east.

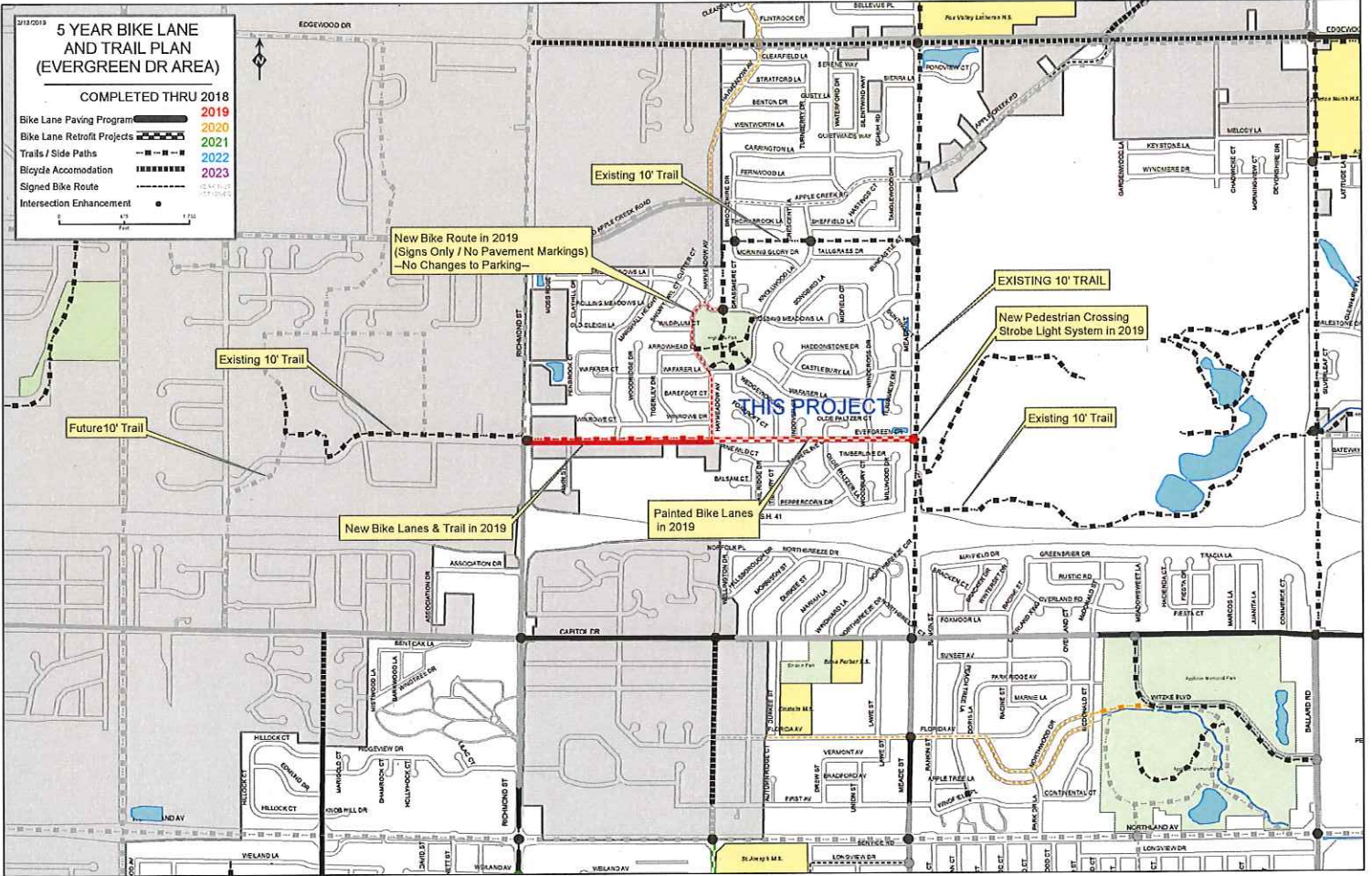
By making these connections and improving these crossings, we will create access to safer walking and biking routes for residents north of I-41. This project will also provide the link to existing trails west into Grand Chute, and promote alternative modes of transportation for our residents, while improving our trail network for recreational opportunities.

Please look over the attached drawings and feel free to contact your alderperson (Kathleen Plank, district7@appleton.org, 428-2623) or me (eric.lom@appleton.org, 832-3958), with any questions or feedback.

Sincerely,

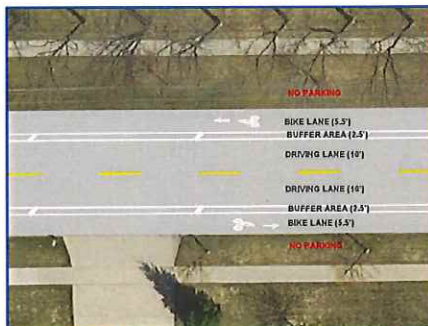
Eric S. Lom, P.E.
City Traffic Engineer







New Roadway Configuration
 (to be implemented in 2019)



Bike Lane Striping Plan
 (to be implemented in 2019)



Push-Button Activated Strobe Light System (example)
 (to be installed at Evergreen/Meads) in 2019)



ROADWAY
 URBANIZATION
 PROJECT

BIKE LANE
 STRIPING
 PROJECT



Evergreen Drive

Bike Lane and Trail Implementation
 Summer 2019