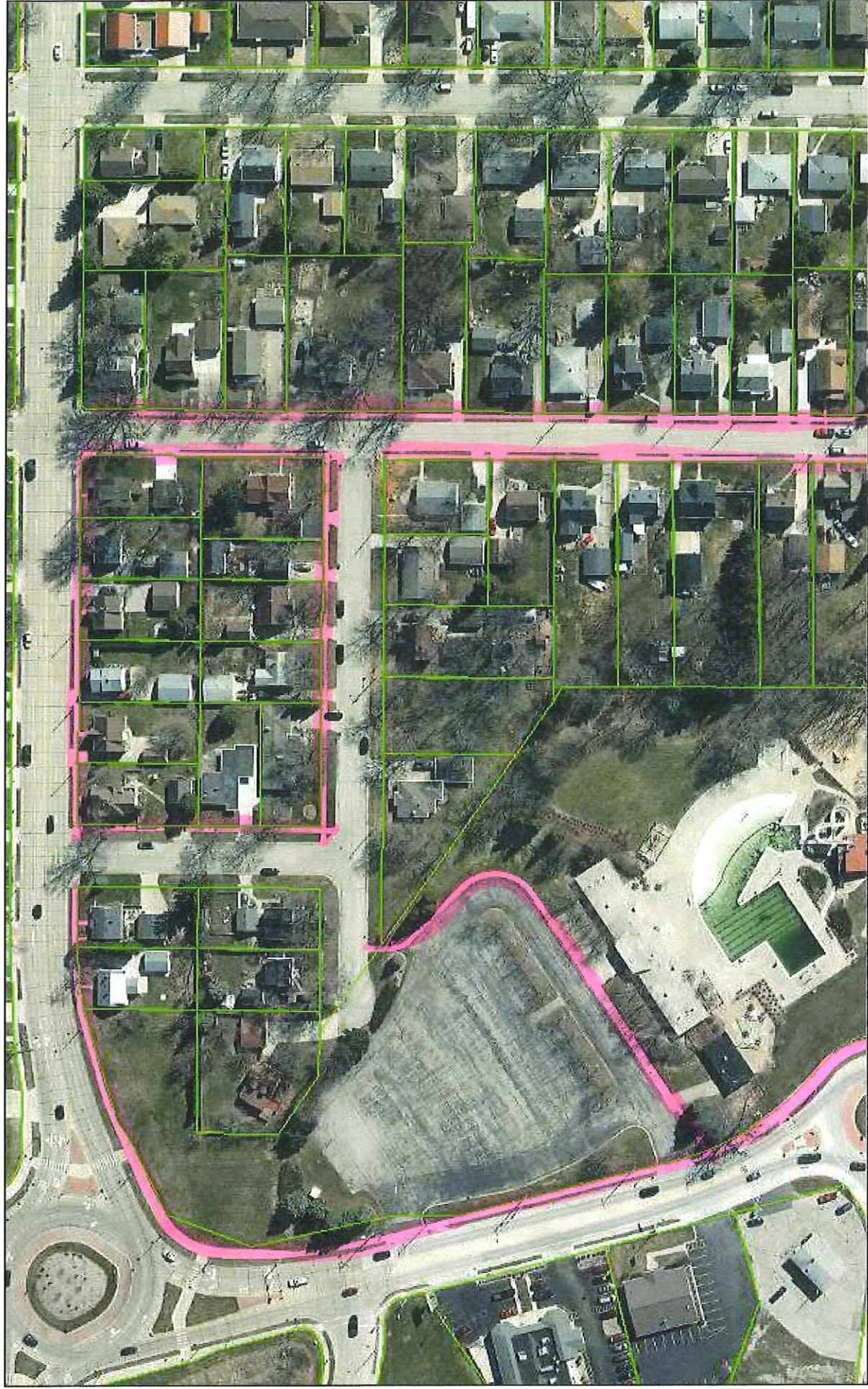


ArcGIS Web Map



May 31, 2018

City Parcels

1:2,257



Why Sidewalks on Warner & Henry Streets?

GENERAL

- Sidewalk Installation Policy
 - First adopted in 1992: *"To provide pedestrian safety and convenience throughout the City of Appleton. Providing a walkable city also promotes a sense of community, provides for safe recreation and exercise, reduces traffic congestion, pollution and noise."*
 - For neighborhoods established prior to 1992: *"Sidewalk shall be considered for installation, where they currently don't exist when streets are reconstructed."*
- Complete Streets Policy
 - First adopted in 2016: *"Appleton streets are designed and maintained to be safe, accessible, convenient and comfortable for all transportation modes, ages and abilities at all times."*
 - Projects Section states: *"The City of Appleton shall approach all transportation projects as an opportunity to create safer, more accessible streets for all users."*
 - Network Section states: *"Under this policy, the City of Appleton will gradually create a network of streets to serve all users."*
- Comprehensive Plan - Transportation Chapter
 - Walking Section states: *"Both on a national and local scale, there is an increasing interest in making walking a viable form of transportation within a community... Appleton has developed a pedestrian friendly network of sidewalks and paths through most of its neighborhoods. This system is expanding through new sidewalks in developing parts of the community and through the efforts to expand the path systems."*
- Creating a Sustainable City Plan
 - Implementing the On-Street Bike Lane Plan, expanding the sidewalk network and trail system are mentioned throughout the Sustainability Master Plan.
- Health in All Policies
 - First adopted in 2017: *"Health in All Policies is a collaborative approach to improving the health of all people by incorporating health consideration into decision-making across sectors and policy areas."*
 - Social Determinates of Health Section states: *"Accessible built environments that promote health and safety, including improved pedestrian, bicycle, and automobile safety, parks and green space, and health school siting."*

SPECIFIC

- Leads to Mead Pool and connects with existing sidewalk through Mead Pool.
- Sidewalks exist on the other neighborhood streets
- Connectivity to future connection to John Street