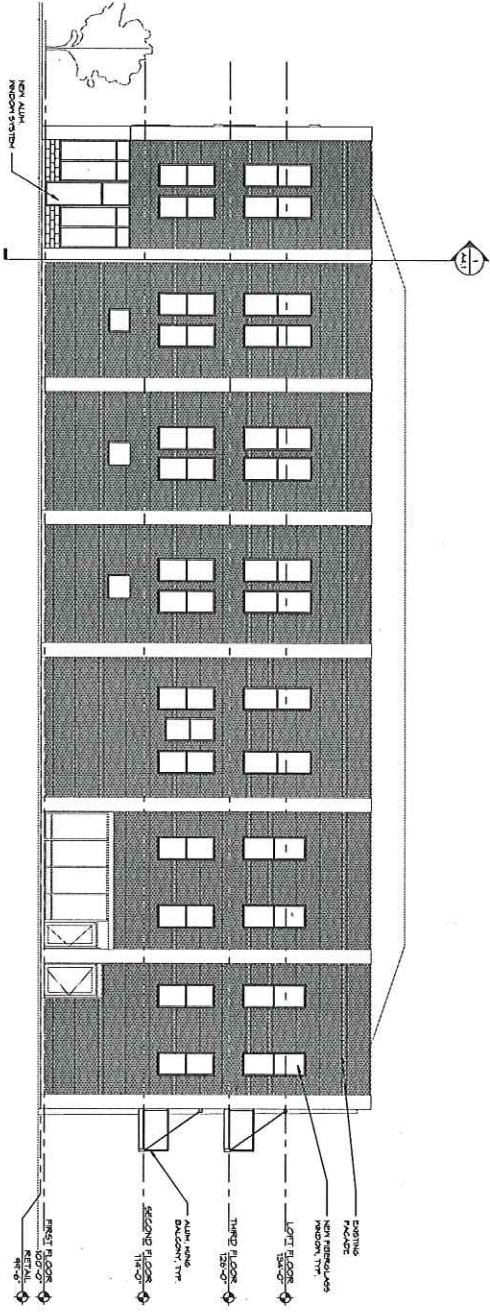


- ELEVATION PLAN NOTES:**
1. SEE FLOOR PLANS FOR ADDITIONAL NOTES ABOUT EXTERIOR WALLS
 2. WINDOW ELEVATIONS - SEE A3.2
 3. DOOR AND FRAME SCHEDULE - SEE A3.2

- ② WALLS
- 01. REPAIR PLASTER WALL
- 02. REPAIR/REMOVE STONE MASONRY WALL
- 03. INSTALL OPENING WITH STONE AND MORTAR
- 04. EXISTING
- 01.

EAST ELEVATION
SCALE: 1/8" = 1'-0"

② 220222
01.



WEST ELEVATION
SCALE: 1/8" = 1'-0"

- EXISTING MASONRY
- NON-TERRAZZO MASONRY
- 1ST FLOOR
- 2ND FLOOR
- 3RD FLOOR
- 4TH FLOOR
- 5TH FLOOR
- 6TH FLOOR
- 7TH FLOOR
- 8TH FLOOR
- 9TH FLOOR
- 10TH FLOOR
- 11TH FLOOR
- 12TH FLOOR
- 13TH FLOOR
- 14TH FLOOR
- 15TH FLOOR
- 16TH FLOOR
- 17TH FLOOR
- 18TH FLOOR
- 19TH FLOOR
- 20TH FLOOR
- 21ST FLOOR
- 22ND FLOOR
- 23RD FLOOR
- 24TH FLOOR
- 25TH FLOOR
- 26TH FLOOR
- 27TH FLOOR
- 28TH FLOOR
- 29TH FLOOR
- 30TH FLOOR
- 31ST FLOOR
- 32ND FLOOR
- 33RD FLOOR
- 34TH FLOOR
- 35TH FLOOR
- 36TH FLOOR
- 37TH FLOOR
- 38TH FLOOR
- 39TH FLOOR
- 40TH FLOOR
- 41ST FLOOR
- 42ND FLOOR
- 43RD FLOOR
- 44TH FLOOR
- 45TH FLOOR
- 46TH FLOOR
- 47TH FLOOR
- 48TH FLOOR
- 49TH FLOOR
- 50TH FLOOR
- 51ST FLOOR
- 52ND FLOOR
- 53RD FLOOR
- 54TH FLOOR
- 55TH FLOOR
- 56TH FLOOR
- 57TH FLOOR
- 58TH FLOOR
- 59TH FLOOR
- 60TH FLOOR
- 61ST FLOOR
- 62ND FLOOR
- 63RD FLOOR
- 64TH FLOOR
- 65TH FLOOR
- 66TH FLOOR
- 67TH FLOOR
- 68TH FLOOR
- 69TH FLOOR
- 70TH FLOOR
- 71ST FLOOR
- 72ND FLOOR
- 73RD FLOOR
- 74TH FLOOR
- 75TH FLOOR
- 76TH FLOOR
- 77TH FLOOR
- 78TH FLOOR
- 79TH FLOOR
- 80TH FLOOR
- 81ST FLOOR
- 82ND FLOOR
- 83RD FLOOR
- 84TH FLOOR
- 85TH FLOOR
- 86TH FLOOR
- 87TH FLOOR
- 88TH FLOOR
- 89TH FLOOR
- 90TH FLOOR
- 91ST FLOOR
- 92ND FLOOR
- 93RD FLOOR
- 94TH FLOOR
- 95TH FLOOR
- 96TH FLOOR
- 97TH FLOOR
- 98TH FLOOR
- 99TH FLOOR
- 100TH FLOOR

ISSUE FOR BID ONLY

NO.	DESCRIPTION	DATE

EXTERIOR ELEVATIONS

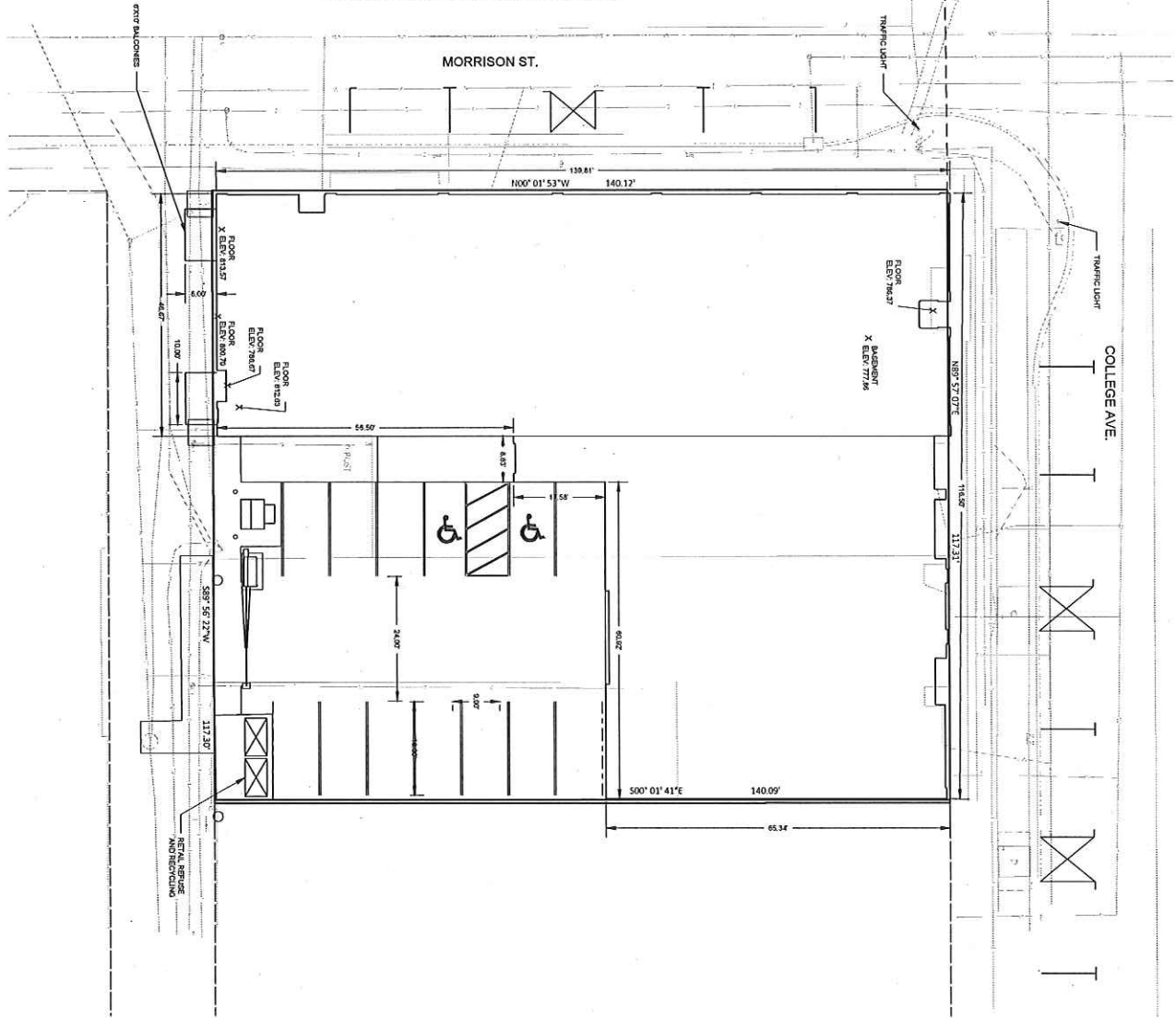
Performa
ARCHITECTS | ENGINEERS
1000 W. COLLEGE AVENUE, SUITE 100
APPLETON, WISCONSIN 54911
TEL: 920.833.1111 FAX: 920.833.1112 WWW.PERFORMA-ARCH.COM

FOR
CONSTRUCTION
CATALYST
CONSTRUCTION

Gabriel Lofts
Fore Development
201 E. College Ave., Appleton, Wisconsin

PROJECT NO.	100075
DATE	08/20/23
SCALE	1/8" = 1'-0"
DESIGNER	AS.2
REVISIONS	

ZONING CENTRAL BUSINESS DISTRICT (CBD)
 NO PARKING REQUIRED IN (CBD)
 NO SNOW STORAGE REQUIRED IN (CBD)



LEGEND:
 ● RECORDS
 ○ SEE SHEETS
 ✕ SPOT ELEVATION
 ○ MANHOLE
 ○ ROUND STORM MAIN
 ○ RECTANGULAR STORM MAIN
 ○ POWER POLE
 ✕ LIGHT POLE
 ✕ PEDESTAL
 ⌋ STREET SIGN
 E WIRE
 1 CONCRETE
 2 W/ ASPHALT
 3 W/ WATER MAIN VALVES
 4 W/ WATER UTILITY
 -C- ELECTRIC UTILITY
 -G- GAS UTILITY
 -S- SANITARY UTILITY
 -SS- STORM SEWER UTILITY
 -C- CENTERLINE
 ○ COMPROMISE THREE
 ○ DIMENSIONS THREE
 * BUSH

RECORDS:
 THE TOP OF RECORD BLOCK 100' STUM, W/ THE CITY OF JACOBSON 2135
 THE TOP OF RECORD BLOCK 100' STUM, W/ THE CITY OF JACOBSON 2135
 THE TOP OF RECORD BLOCK 100' STUM, W/ THE CITY OF JACOBSON 2135
 THE TOP OF RECORD BLOCK 100' STUM, W/ THE CITY OF JACOBSON 2135
 THE TOP OF RECORD BLOCK 100' STUM, W/ THE CITY OF JACOBSON 2135
 THE TOP OF RECORD BLOCK 100' STUM, W/ THE CITY OF JACOBSON 2135



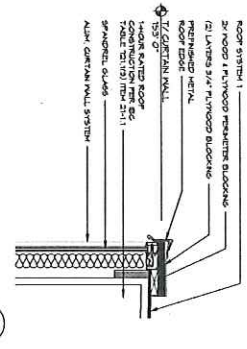
PROJECT NO.	C100
DATE	02/7/19
SCALE	AS SHOWN
DESIGNED BY	18093

SITEPLAN

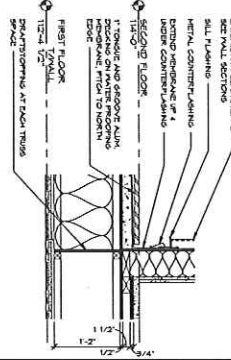


Gabriel Lofts
 Fore Development
 201 E. College Ave., Appleton, Wisconsin

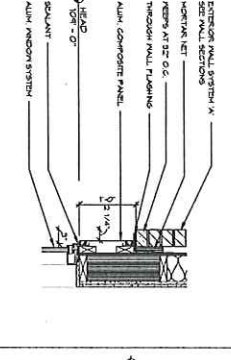
NO.	DESCRIPTION	DATE
1	CITY SUBMITTAL	2/26/19
2	CITY RE-SUBMITTAL	3/21/19



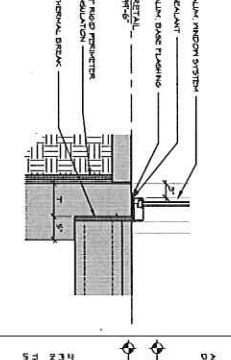
1
ROOF EDGE
SCALE: 1" = 1'-0"



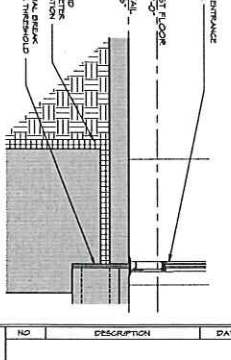
2
BALCONY DETAIL
SCALE: 1" = 1'-0"



3
WINDOW HEAD
SCALE: 1" = 1'-0"



4
SILL DETAIL
SCALE: 1" = 1'-0"



5
SILL DETAIL
SCALE: 1" = 1'-0"



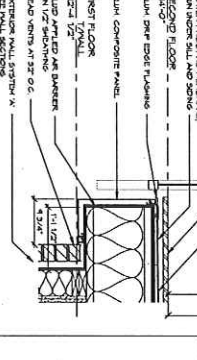
6
BALCONY DETAIL
SCALE: 1" = 1'-0"



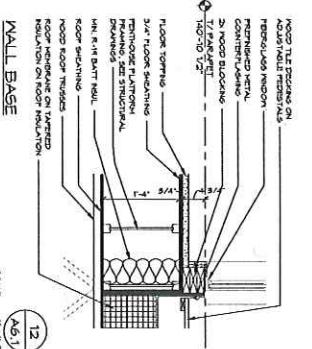
7
WINDOW HEAD
SCALE: 1" = 1'-0"



8
SILL DETAIL
SCALE: 1" = 1'-0"



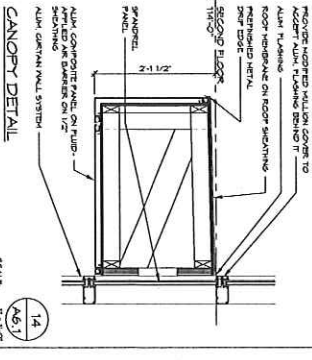
9
SILL DETAIL
SCALE: 1" = 1'-0"



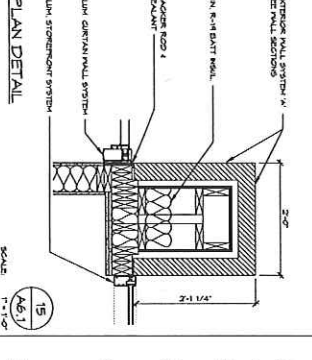
12
WALL BASE
SCALE: 1" = 1'-0"



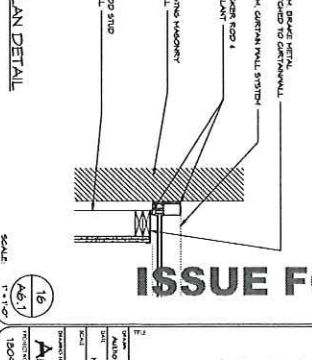
14
CANOPY DETAIL
SCALE: 1" = 1'-0"



15
BALCONY DETAIL
SCALE: 1" = 1'-0"



16
BALCONY DETAIL
SCALE: 1" = 1'-0"



17
BALCONY DETAIL
SCALE: 1" = 1'-0"

ISSUE FOR BID ONLY

<p>Performa ARCHITECTS ENGINEERS</p>	<p>FOR CATALYST CONSTRUCTION</p>	<p>Gabriel Lofts Fore Development 201 E. College Ave., Appleton, Wisconsin</p>	<table border="1"> <thead> <tr> <th>NO.</th> <th>DESCRIPTION</th> <th>DATE</th> </tr> </thead> <tbody> <tr> <td> </td> <td> </td> <td> </td> </tr> </tbody> </table>	NO.	DESCRIPTION	DATE			
NO.	DESCRIPTION	DATE							