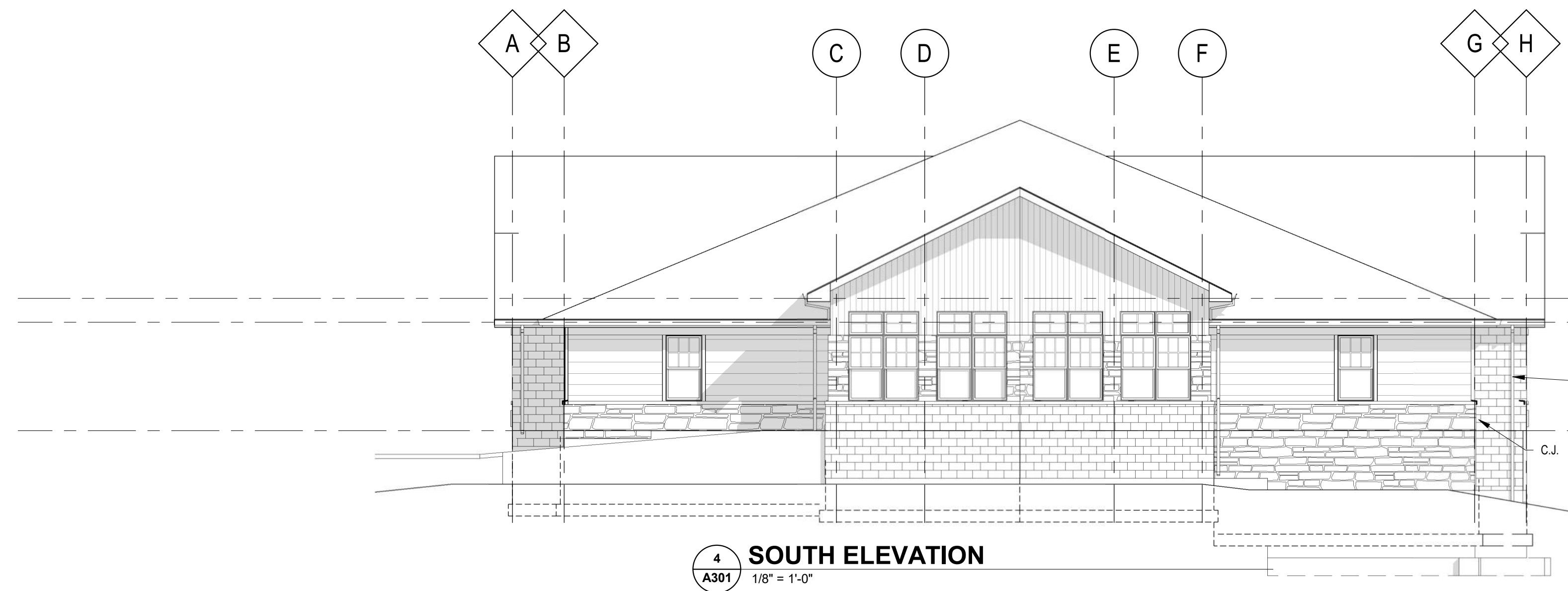


12 ELEV. D
A301 1/8" = 1'-0"

11 ELEV. C
A301 1/8" = 1'-0"

9 ELEV. - A
A301 1/8" = 1'-0"

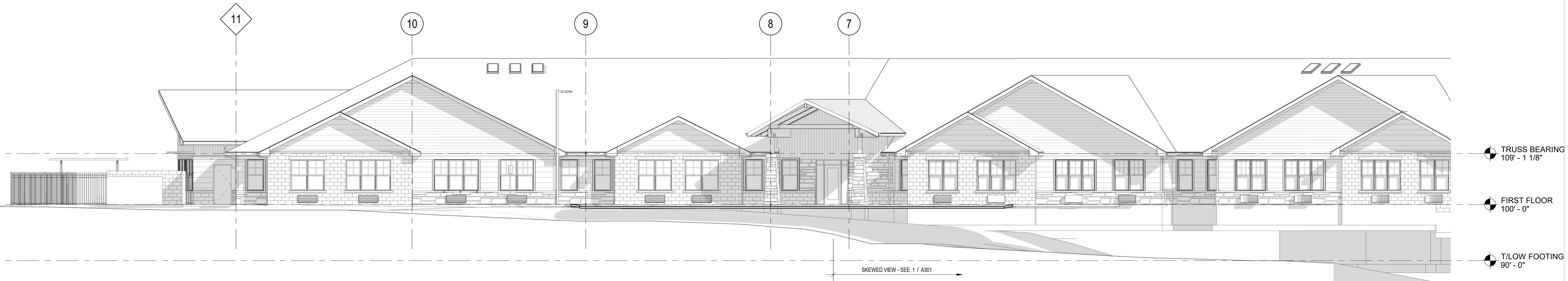
EXTERIOR MATERIAL KEY			
CMU1	CMU VENEER - SPLIT FACE CMU COUNTY MATERIALS - BROWN (18 - 068A) MORTAR: MAX TAN (MORTAR TECHNOLOGIES)	LP SMART SIDE TRIM	WINDOW TRIM (SIDE AND SILL) 9/16" x 3/5" COLOR - SW-7034 - STATUS BRONZE WINDOW TRIM (HEAD) 9/16" x 5/5" COLOR - SW-7034 - STATUS BRONZE FRIEZE TRIM BAND 9/16" x 7/21" COLOR - SW-7034 - STATUS BRONZE VERTICAL CORNER TRIM: 9/16" x 3/5" COLOR - SW-7034 - STATUS BRONZE
ST1	STONE VENEER: THIN STONE NATURAL STONE VENEERS INTERNATIONAL: SHADY CANYON MORTAR: LITE PRAIRIE STONE (MORTAR TECHNOLOGIES)		
LS1	LP SIDING 1: LP SMART SIDE - 4" EXPOSURE SW-6121 - WHEAT WHEAT - WOOD GRAIN TEXTURE		CAST STONE - HERITAGE CAST STONE COLOR: SAND DUNE - SMOOTH
LS2	LP SIDING 2: LP SMART SIDE - 8" EXPOSURE SW-7032 - WARM STONE - WOOD GRAIN TEXTURE		ALUMINUM SOFFIT, FASCIA, SCREEN WALL COPING, GUTTERS AND DOWN SPOUTS COLOR - BRONZE (ROLLEX)
LS3	VERTICAL SIDING PANEL: LP SMART SIDE PANEL SW-6363 - GINGERLY - WOOD GRAIN TEXTURE		ASPHALT SHINGLES - TIMBERLINE PRESTIQUE - MISSION BROWN ALUMINUM RAILINGS - COLOR: DARK BRONZE ALUMINUM STOREFRONT / CURTAINWALL COLOR: DARK BRONZE ANODIZED H.M. DOORS & FRAMES - PAINTED COLOR: SW 7032 WARM STONE



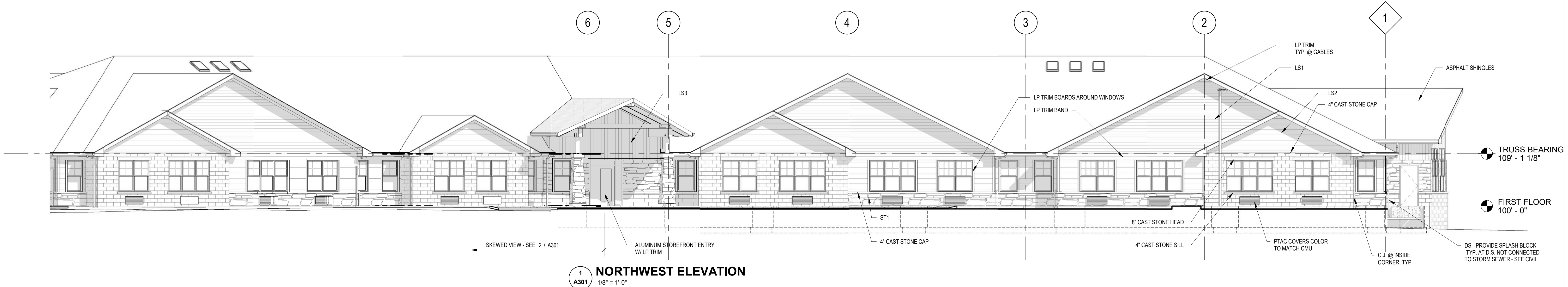
4 SOUTH ELEVATION
A301 1/8" = 1'-0"



3 ENTRY ELEVATION
A301 1/8" = 1'-0"



2 WEST ELEVATION
A301 1/8" = 1'-0"



1 NORTHWEST ELEVATION
A301 1/8" = 1'-0"

ISSUE DATES:		
Issue	Description	Date
SUP	SUP SUBMITTAL	08-27-19

PRELIMINARY
NOT FOR
CONSTRUCTION

This document contains confidential or proprietary information of Iconica. Neither the document nor the information herein is to be reproduced, distributed, used or disclosed, either in whole or in part, except as specifically authorized by Iconica.

Sheet Title
**BUILDING
ELEVATIONS**

Project Number: 20190200
Sheet Number

A301