



"... meeting community needs ... enhancing quality of life."

DEPARTMENT OF PUBLIC WORKS  
Engineering Division – Traffic Section  
2625 E. Glendale Avenue  
Appleton, WI 54911  
TEL (920) 832-5580  
FAX (920) 832-5570

**To:** Municipal Services Committee  
**From:** Mike Hardy, Assistant City Traffic Engineer  
**Date:** June 1, 2020  
**Re:** Parking restriction change on Windward Ln, north of Capitol Dr (by Edna Ferber School)  
*Follow-Up to Parking Trial Period*

The Traffic Section was contacted by a citizen regarding a parking/traffic safety issue on Windward Lane, just north of Capitol Drive, by Edna Ferber Elementary School. On school days, especially during school arrival and departure, parked vehicles on both sides of Windward Lane were making it difficult to navigate the curved part of the street. This would become more problematic during winter months with snowbanks.

The first iteration of trial changes was implemented during the 2018/2019 school year. Comments from a citizen indicated the first trial feel short of addressing the concerns. In summer of 2019, a survey was sent to several Windward Lane property owners for feedback. From that feedback, a second trial of changes was implemented during the 2019/2020 school year.

Upon our review at the end of the second trial period, it was determined the changes had adequately addressed the concern. Additionally, we have received no negative feedback regarding this change since implemented in September 2019. As such we recommend making the change permanent.

**To accomplish this, the following ordinance action is required:**

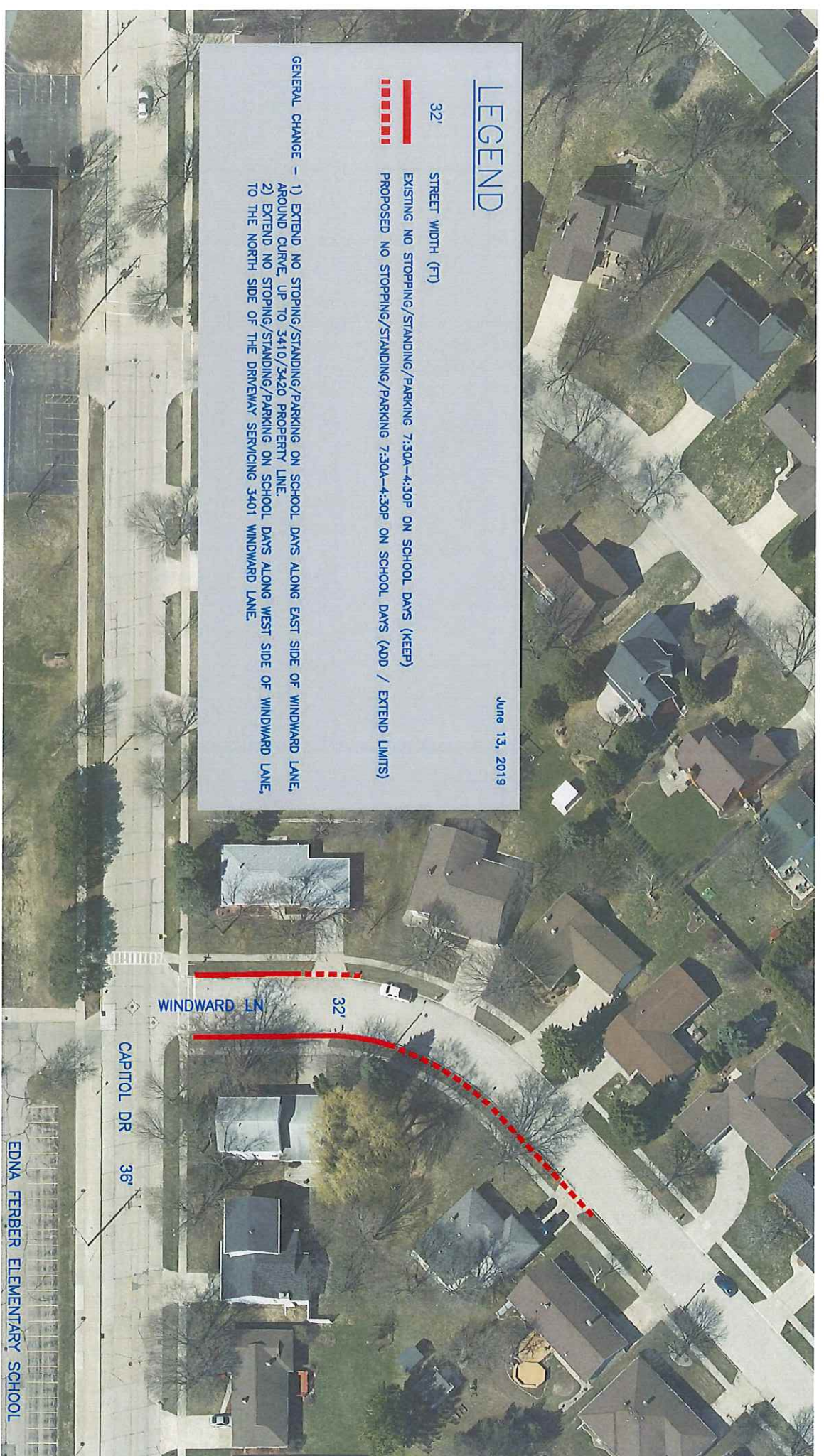
1. **Create:** Stopping, standing and parking be prohibited from 7:30 a.m. to 4:30 p.m. on school days on the east side of Windward Lane from Capitol Drive to a point 270 feet north of Capitol Drive."
2. **Create:** Stopping, standing and parking be prohibited from 7:30 a.m. to 4:30 p.m. on school days on the west side of Windward Lane from Capitol Drive to a point 105 feet north of Capitol Drive."

# LEGEND

June 13, 2019

- 32' STREET WIDTH (FT)
- EXISTING NO STOPPING/STANDING/PARKING 7:30A-4:30P ON SCHOOL DAYS (KEEP)
- PROPOSED NO STOPPING/STANDING/PARKING 7:30A-4:30P ON SCHOOL DAYS (ADD / EXTEND LIMITS)

GENERAL CHANGE - 1) EXTEND NO STOPPING/STANDING/PARKING ON SCHOOL DAYS ALONG EAST SIDE OF WINDWARD LANE, AROUND CURVE UP TO 3410/3420 PROPERTY LINE.  
2) EXTEND NO STOPPING/STANDING/PARKING ON SCHOOL DAYS ALONG WEST SIDE OF WINDWARD LANE, TO THE NORTH SIDE OF THE DRIVEWAY SERVICING 3401 WINDWARD LANE.



WINDWARD LN

CAPITOL DR 36'

EDNA FERBER ELEMENTARY SCHOOL