

NOTICE OF PUBLIC HEARING
OF THE
APPLETON CITY PLAN COMMISSION

Dear property owner(s):

The City of Appleton Plan Commission will conduct a Public Hearing on Tuesday, June 23, 2020, at 4:00 P.M., or as soon thereafter as can be heard, in Common Council Chambers, 6th Floor, City Hall, 100 North Appleton Street, for the purpose of considering the following proposed Special Use Permit:

- Pursuant to Sections 9-262(b)(3), 23-66 and 23-114 of the Appleton Municipal Code, to consider a request by Bob Wall, applicant, for property located at 222 East College Avenue (Tax Id #31-2-0321-00) to obtain a Special Use Permit for a sidewalk café and restaurant with alcohol sales and consumption (Green Gecko Grocer & Deli). In the CBD Central Business District, a Special Use Permit is required for a sidewalk café and restaurant (deli) with alcohol sales and consumption.

- ALDERMANIC DISTRICT: 1 – Alderperson William Siebers

You are being notified as a policy of the City of Appleton Community and Economic Development Department. This notification invites you to express your views or concerns regarding the above-described request. The Plan Commission meeting is open to the public; however, considering the COVID-19 Health Emergency, you are strongly encouraged to consider sharing any feedback with Plan Commission members via written letter, email or phone call instead of appearing in person. Please contact Don Harp, Principal Planner, in the Community and Economic Development Department at 920-832-6466 or by email at don.harp@appleton.org.

Alternatively, you can also contact the Mayor's Office at mayor@appleton.org and your comments will be forwarded to the Plan Commission. The City Plan Commission makes a recommendation to the Common Council who makes the final decision on the matter.

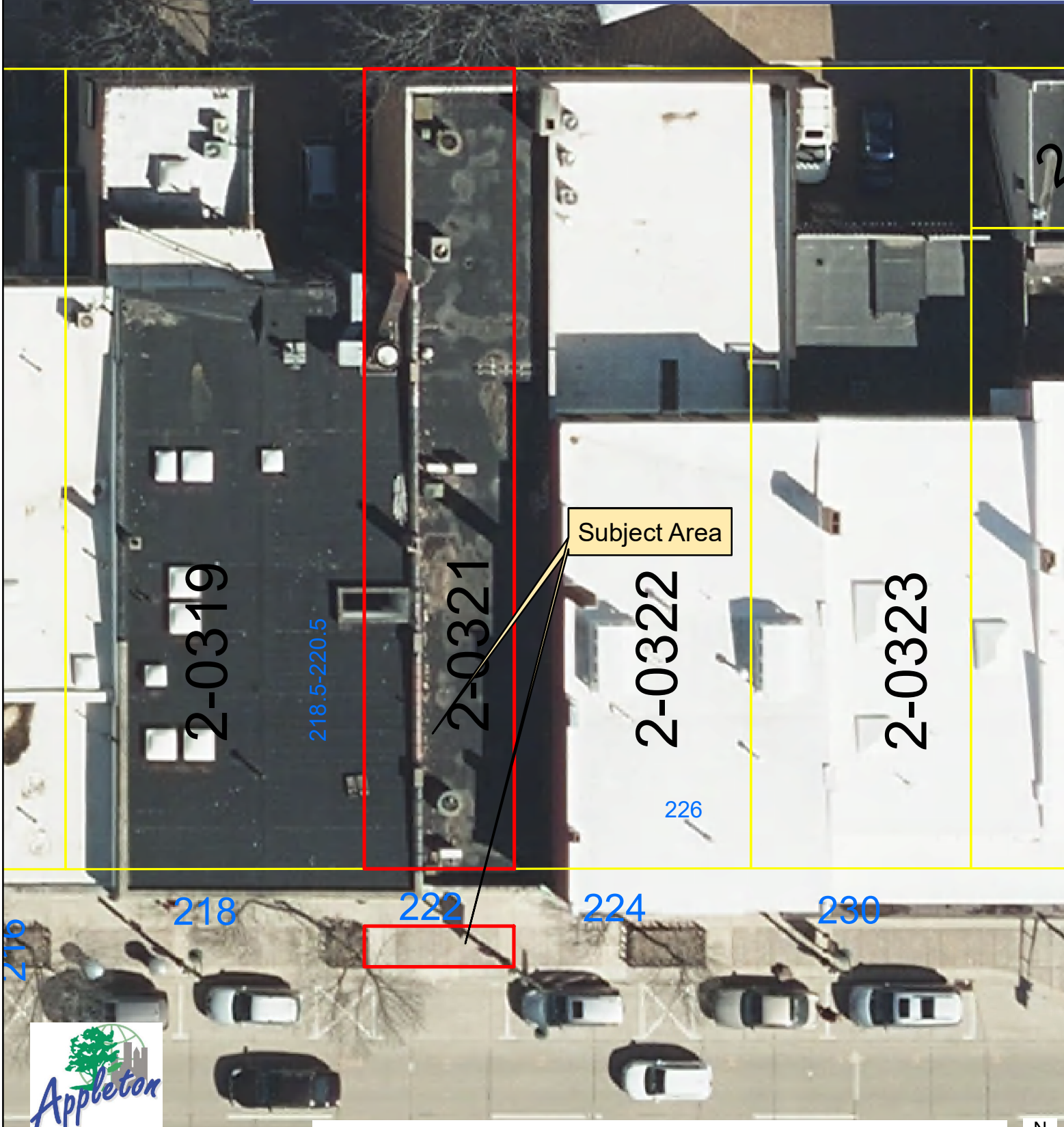
CITY PLAN COMMISSION

COMMUNITY & ECONOMIC DEVELOPMENT
CITY HALL - 100 NORTH APPLETON STREET
APPLETON, WISCONSIN 54911-4799
920-832-6468

Reasonable accommodations for persons with disabilities will be made upon request and if feasible.

Special Use Permit
On-Site Alcohol Sales and Consumption, include the Sidewalk Cafe
Green Gecko Grocer
222 E College Avenue
Aerial Map

E JOHNSTON



Subject Area

2-0319

218.5-220.5

2-0321

2-0322

2-0323

218

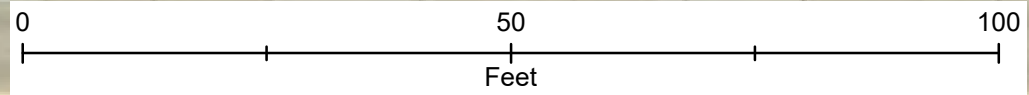
222

224

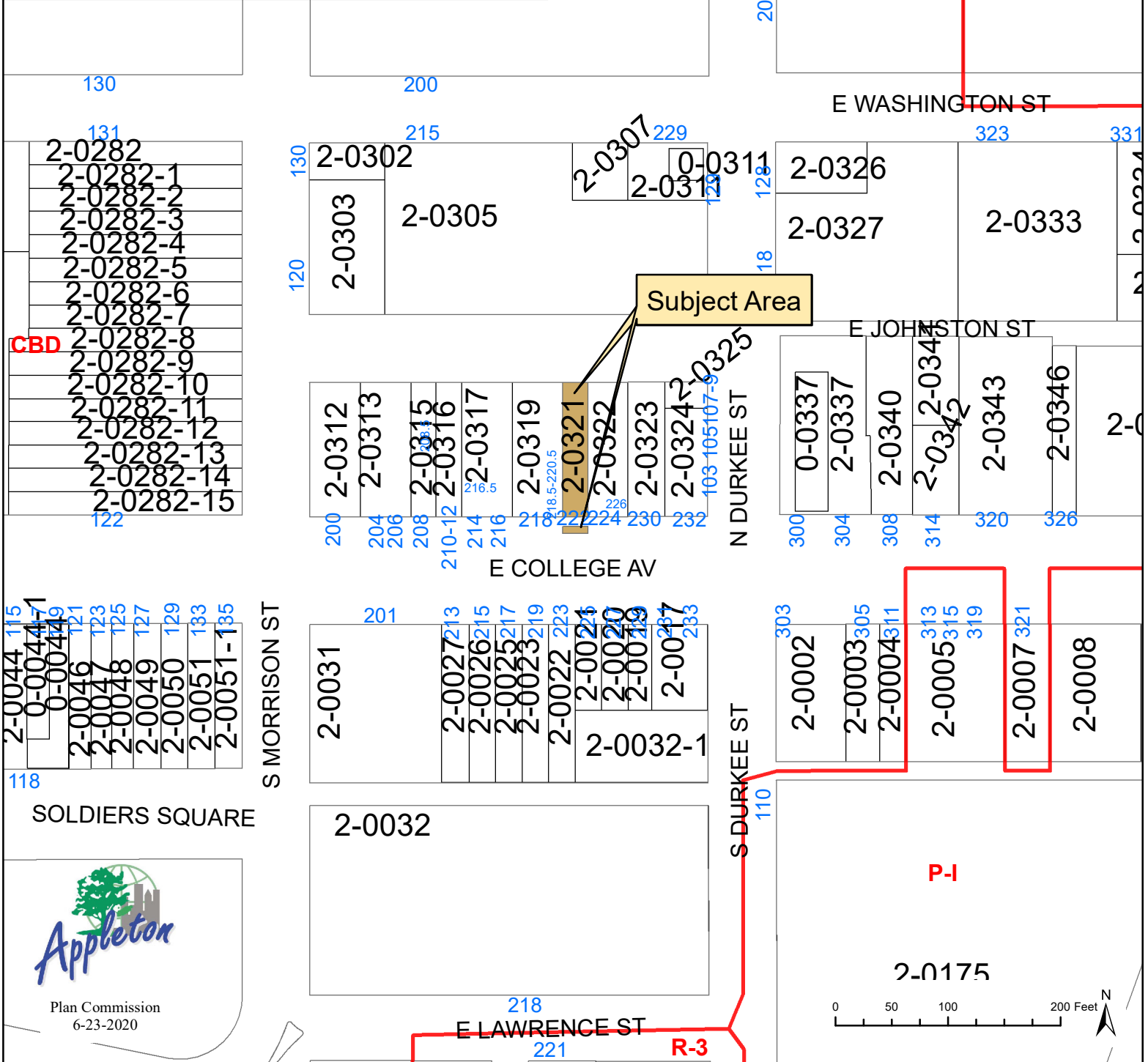
230



Plan Commission
6-23-2020



Special Use Permit
 On-Site Alcohol Sales and Consumption, include the Sidewalk Cafe
 Green Gecko Grocer
 222 E College Avenue
 Zoning Map



- 2-0044 115
- 0-0044 117
- 0-0044 119
- 2-0046 121
- 2-0047 123
- 2-0048 125
- 2-0049 127
- 2-0050 129
- 2-0051 133
- 2-0051-1 135

SOLDIERS SQUARE



S MORRISON ST

- 2-0031 201
- 2-0027 213
- 2-0026 215
- 2-0025 217
- 2-0023 219
- 2-0022 223
- 2-0021 225
- 2-0020 227
- 2-0019 229
- 2-0017 233
- 2-0032-1

2-0032

S DURKEE ST

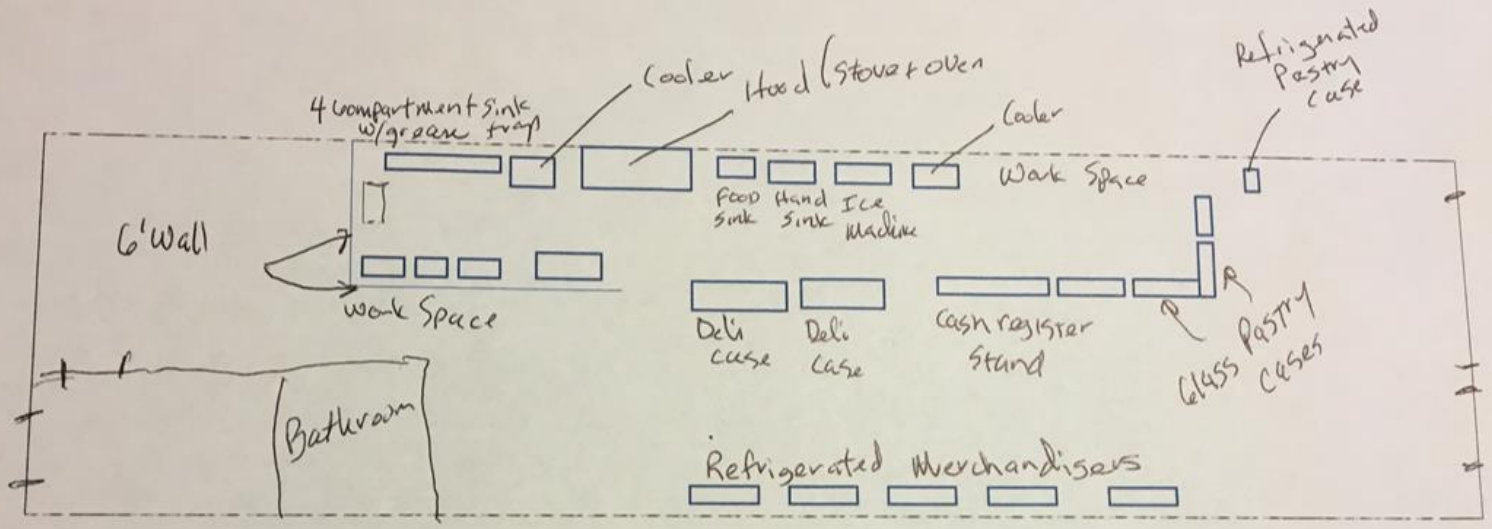
- 2-0002 303
- 2-0003 305
- 2-0004 311
- 2-0005 313
- 2-0005 315
- 2-0005 319
- 2-0007 321
- 2-0008

2-0175

- 2-0282
- 2-0282-1
- 2-0282-2
- 2-0282-3
- 2-0282-4
- 2-0282-5
- 2-0282-6
- 2-0282-7
- 2-0282-8
- 2-0282-9
- 2-0282-10
- 2-0282-11
- 2-0282-12
- 2-0282-13
- 2-0282-14
- 2-0282-15

- 2-0302
- 2-0303
- 2-0305
- 2-0312
- 2-0313
- 2-0315
- 2-0316
- 2-0317
- 2-0319
- 2-0321
- 2-0322
- 2-0323
- 2-0324

- 2-0311
- 2-0326
- 2-0327
- 2-0333
- 0-0337
- 2-0337
- 2-0340
- 2-0342
- 2-0343
- 2-0346



Green Grocer & Deli
 222 E. College Avenue