

**NOTICE OF INFORMAL PUBLIC HEARING**  
**OF THE**  
**APPLETON CITY PLAN COMMISSION**

NOTICE IS HEREBY GIVEN THAT a request to amend the City of Appleton Official Map has been initiated by the City of Appleton Department of Public Works and will be presented to the Appleton City Plan Commission in Common Council Chambers, 6th Floor, City Hall, 100 North Appleton Street, on Tuesday, October 24, 2017, at 4:00 P.M., or as soon thereafter as can be heard, in the matter of the City Plan Commission to amend the Official Map described as follows:

**COMMON DESCRIPTION:** The Department of Public Works is requesting to amend the City of Appleton Official Map to remove lands previously identified for a future stormwater pond, generally located at the northeast corner of the intersection of Express Court and Kensington Drive and characterized by parcel number 31-4-5568-00.

**ALDERMANIC DISTRICT:** 3 – Alderperson Curt Konetzke

You are being notified as a policy of the City of Appleton Community and Economic Development Department. This notification invites you to appear before the Appleton City Plan Commission, and you will be given an opportunity to express your views or concerns regarding the above-described request. You may also address the City Plan Commission by letter at the address below. The City Plan Commission makes a recommendation to the Common Council who makes the final decision on the matter.

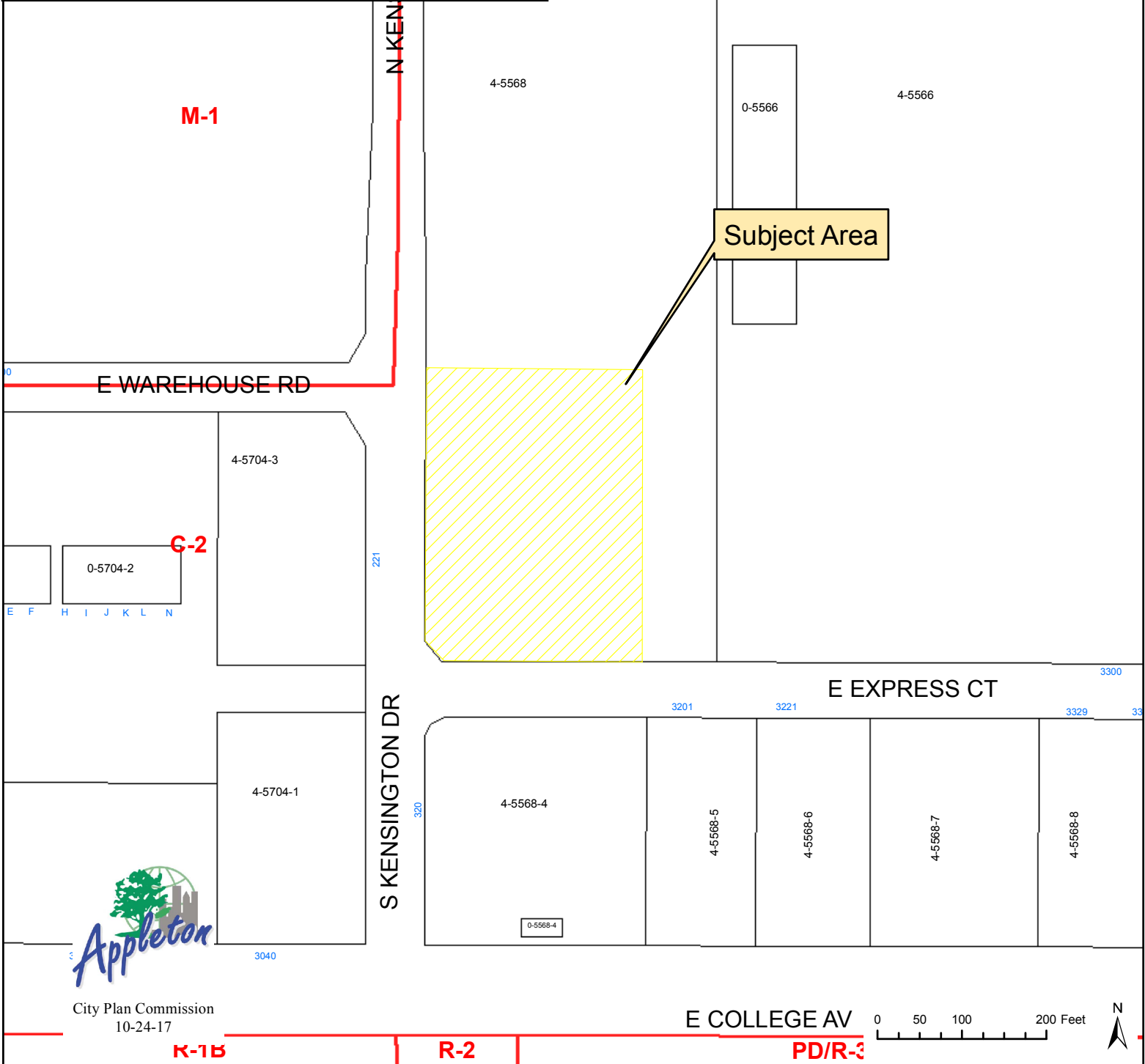
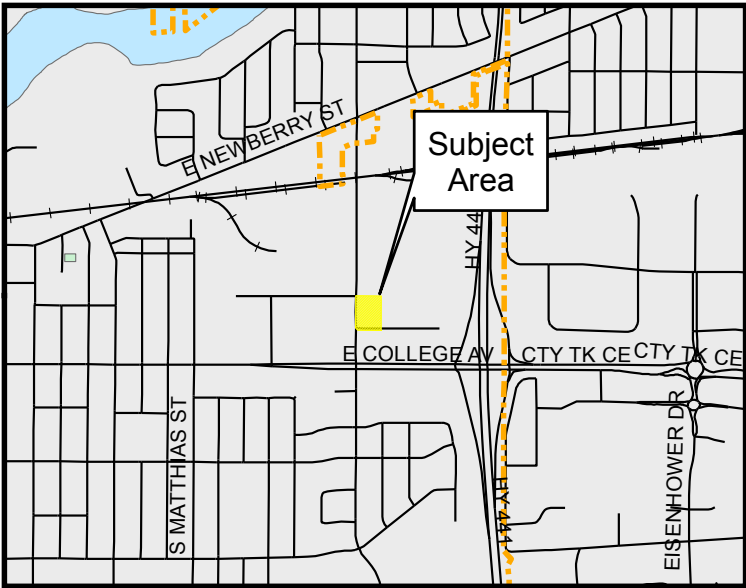
Any questions regarding this matter should be directed to David Kress, Principal Planner, in the Community and Economic Development Department at 920-832-6428.

CITY PLAN COMMISSION

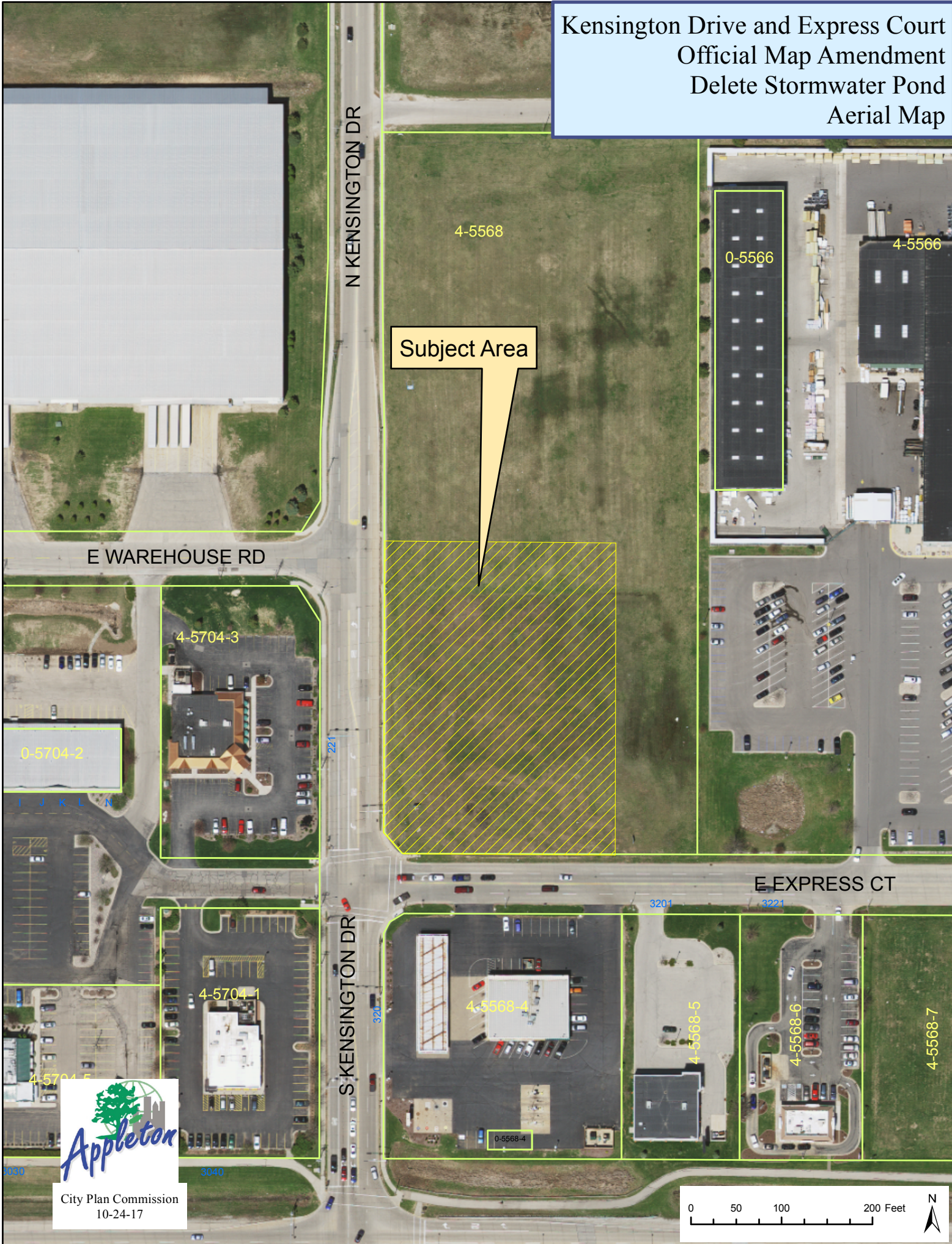
COMMUNITY & ECONOMIC DEVELOPMENT  
CITY HALL - 100 NORTH APPLETON STREET  
APPLETON, WISCONSIN 54911-4799  
920-832-6468

*Reasonable accommodations for persons with disabilities will be made upon request and if feasible.*

Kensington Drive and Express Court  
 Official Map Amendment  
 Delete Stormwater Pond  
 Zoning Map



Kensington Drive and Express Court  
Official Map Amendment  
Delete Stormwater Pond  
Aerial Map



Subject Area

E WAREHOUSE RD

N KENSINGTON DR

4-5568

0-5566

4-5566

4-5704-3

0-5704-2

E EXPRESS CT

4-5704-1

S KENSINGTON DR

4-5568-4

4-5568-5

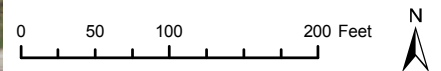
4-5568-6

4-5568-7

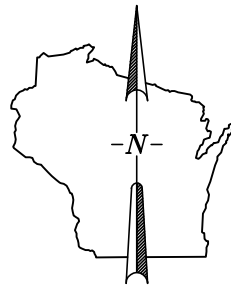
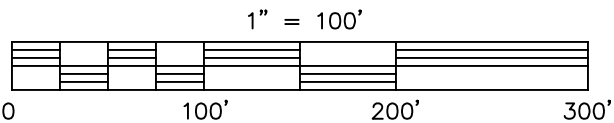
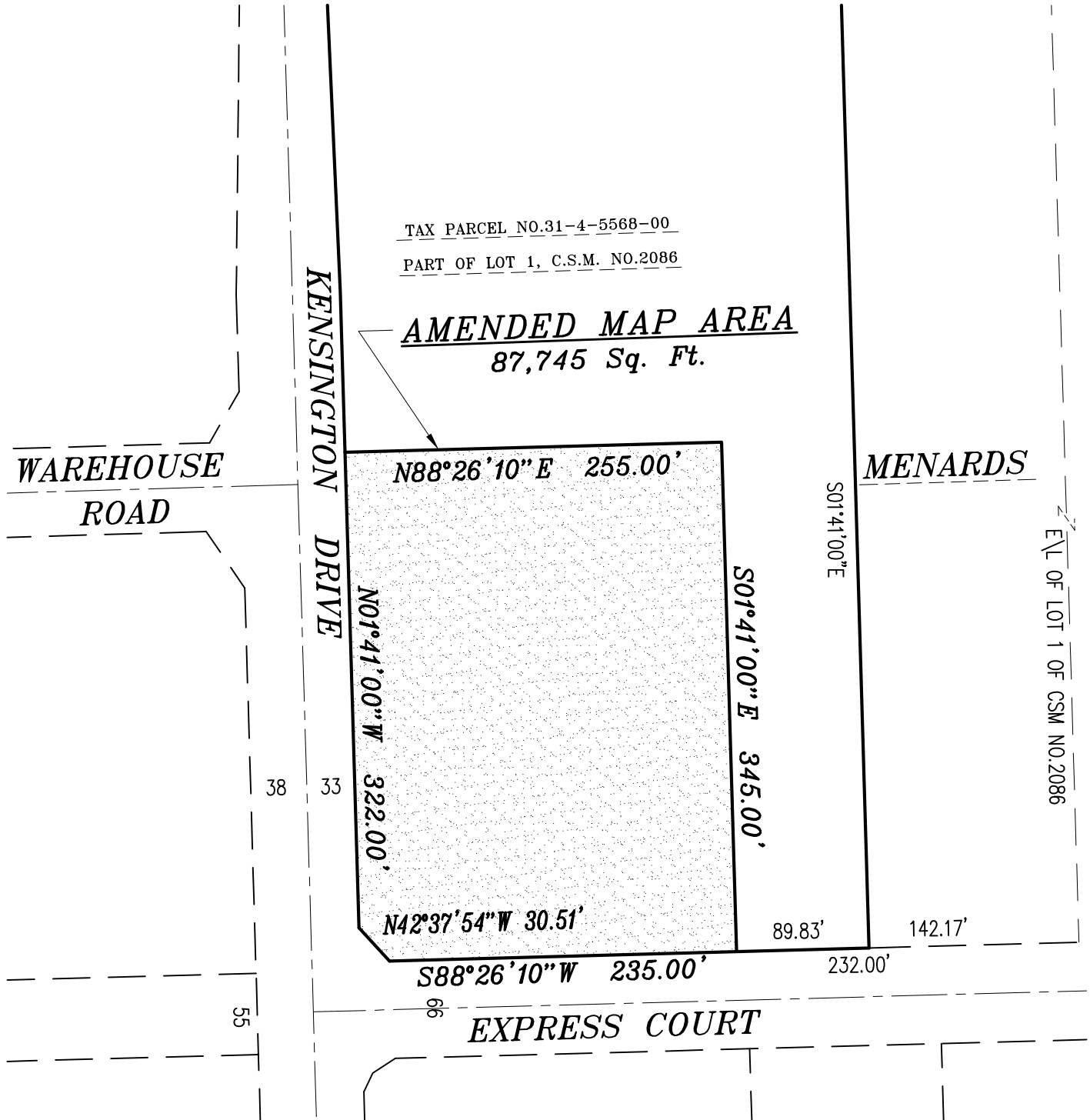
0-5568-4



City Plan Commission  
10-24-17



# EXHIBIT "A"



## CITY OF APPLETON

DEPT. OF PUBLIC WORKS  
ENGINEERING DIVISION  
100 NORTH APPLETON STREET  
APPLETON, WI 54911  
920-832-6474

DRAFTED BY: T. KROMM

H:\ACAD\OFFICIAL MAP\EXPRESS POND\_Map\_Amend\_0912\_2017