

GLENDALE AVENUE

1982 - CONCRETE
 1987 - ASPHALT & GRAVEL
 1988 - ASPHALT
 1989 - ASPHALT
 1990 - ASPHALT
 1991 - ASPHALT
 1992 - ASPHALT
 1993 - ASPHALT
 1994 - ASPHALT
 1995 - ASPHALT
 1996 - ASPHALT
 1997 - ASPHALT
 1998 - ASPHALT
 1999 - ASPHALT
 2000 - ASPHALT
 2001 - ASPHALT
 2002 - ASPHALT
 2003 - ASPHALT
 2004 - ASPHALT
 2005 - ASPHALT
 2006 - ASPHALT
 2007 - ASPHALT
 2008 - ASPHALT
 2009 - ASPHALT
 2010 - ASPHALT

Asphalt: 2000
 Traffic Counts: 2000
 No parking north side (Ballard Rd to 712' +/- Ballard)

GLENDALE AVE

BALLARD RD

6.0' THICK CONCRETE
 12.5' THICK CONCRETE
 5.0' THICK CONCRETE
 5.0' THICK CONCRETE

CONCRETE DRIVEWAY

CONCRETE DRIVEWAY

CONCRETE DRIVEWAY

CONCRETE DRIVEWAY

CONCRETE DRIVEWAY

CONCRETE DRIVEWAY

CONCRETE DRIVEWAY

CONCRETE DRIVEWAY

CONCRETE DRIVEWAY

CONCRETE DRIVEWAY

CONCRETE DRIVEWAY

CONCRETE DRIVEWAY

ASPH

ASPH

ASPH

ASPH

ASPH

ASPH

ASPH

ASPH

ASPH

ASPH

ASPH

ASPH

ASPH

ASPH

ASPH

ASPH

ASPH

ASPH

ASPH

ASPH

ASPH

ASPH

ASPH

ASPH

ASPH

ASPH

ASPH

ASPH

ASPH

ASPH

ASPH

ASPH

ASPH

ASPH

ASPH

ASPH

ASPH

ASPH

ASPH

ASPH

ASPH

ASPH

ASPH

ASPH

ASPH

ASPH

ASPH

ASPH

ASPH

ASPH

ASPH

ASPH

ASPH

ASPH

ASPH

ASPH

ASPH

ASPH

ASPH

ASPH

ASPH

ASPH

ASPH

ASPH

ASPH

ASPH

ASPH

ASPH

ASPH

ASPH

ASPH

ASPH

ASPH

ASPH

ASPH

ASPH

ASPH

ASPH

ASPH

ASPH

ASPH

ASPH

ASPH

ASPH

ASPH

ASPH

ASPH

ASPH

ASPH

ASPH

ASPH

ASPH

ASPH

ASPH

ASPH

ASPH

ASPH

ASPH

ASPH

ASPH

ASPH

ASPH

ASPH

ASPH

ASPH

ASPH

ASPH

ASPH

ASPH

ASPH

ASPH

ASPH

ASPH

ASPH

ASPH

ASPH

ASPH

ASPH

ASPH

ASPH

ASPH

ASPH

ASPH

ASPH

ASPH

ASPH

ASPH

ASPH

ASPH

ASPH

ASPH

ASPH

ASPH

ASPH

ASPH

ASPH

ASPH

ASPH

ASPH

ASPH

ASPH

ASPH

ASPH

ASPH

ASPH

ASPH

ASPH

ASPH

ASPH

ASPH

ASPH

ASPH

ASPH

ASPH

ASPH

ASPH

ASPH

ASPH

ASPH

ASPH

ASPH

ASPH

ASPH

ASPH

ASPH

ASPH

ASPH

ASPH

ASPH

ASPH

ASPH

ASPH

ASPH

ASPH

ASPH

ASPH

ASPH

ASPH

ASPH

ASPH

ASPH

ASPH

ASPH

ASPH

ASPH

ASPH

ASPH

ASPH

ASPH

ASPH

ASPH

ASPH

ASPH

ASPH

ASPH

ASPH

ASPH

ASPH

ASPH

ASPH

ASPH

ASPH

ASPH

ASPH

ASPH

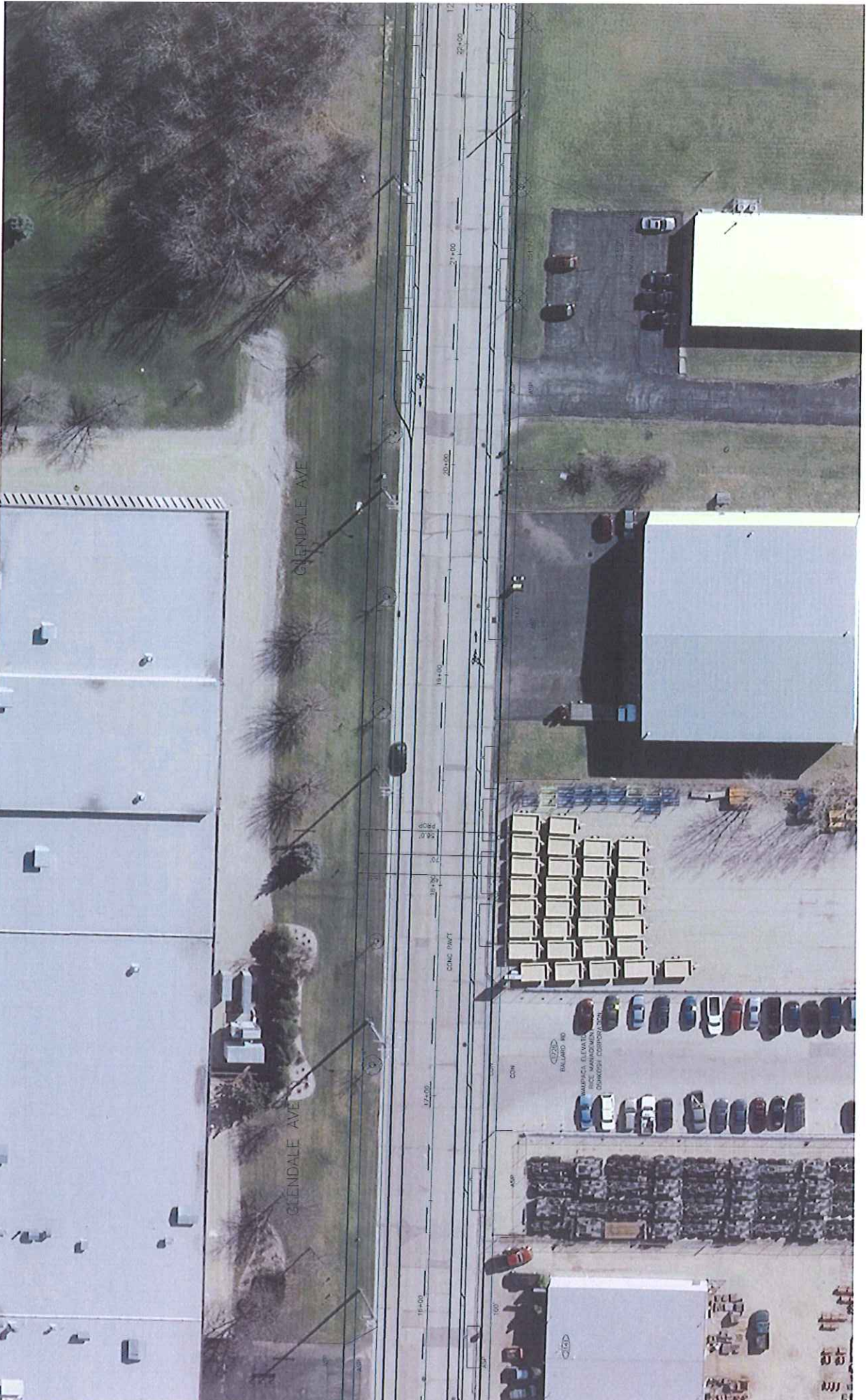
ASPH

ASPH

ASPH

ASPH

ASPH



GLENDALE AVE

GLENDALE AVE

17+00 18+00 19+00 20+00 21+00 22+00 23+00
CONC. PAVT
17+25 17+50 18+25 18+50 19+25 19+50 20+25 20+50 21+25 21+50 22+25 22+50 23+25 23+50

CON
PALLARD HO
MURPHY, G. & SONS
RICE MANUFACTURING
DUNKER CORPORATION

ASP

ASP

