

STORMWATER Projects Update

Presented to
UTILITIES COMMITTEE
September 22nd , 2015

Appleton's Implementation Plan for City-wide Stormwater Management Plan

- 2015
 - Final design/permitting of Northland Pond (In Progress)
 - Work with Counties to clarify credit (In Progress)
 - Evaluate potential Mud Creek project (DONE)
 - Relocate public storm sewer at WWTP to address Illicit Discharge (In Progress)

Appleton's Implementation Plan –Con't

- 2016
 - Solicit bids for Northland Pond (Likely Delayed into 2017)
 - Work with WDOT to clarify credit
- 2017
 - Construct Northland Pond
 - Evaluate possibility of adding private street sweeping contract to supplement City staff
 - Final Design and Purchase Land for Leona Street Pond
- 2018
 - Construct Leona Street Pond
 - Possibly construct pond with WDOT 441 Project



NR 216 Permit

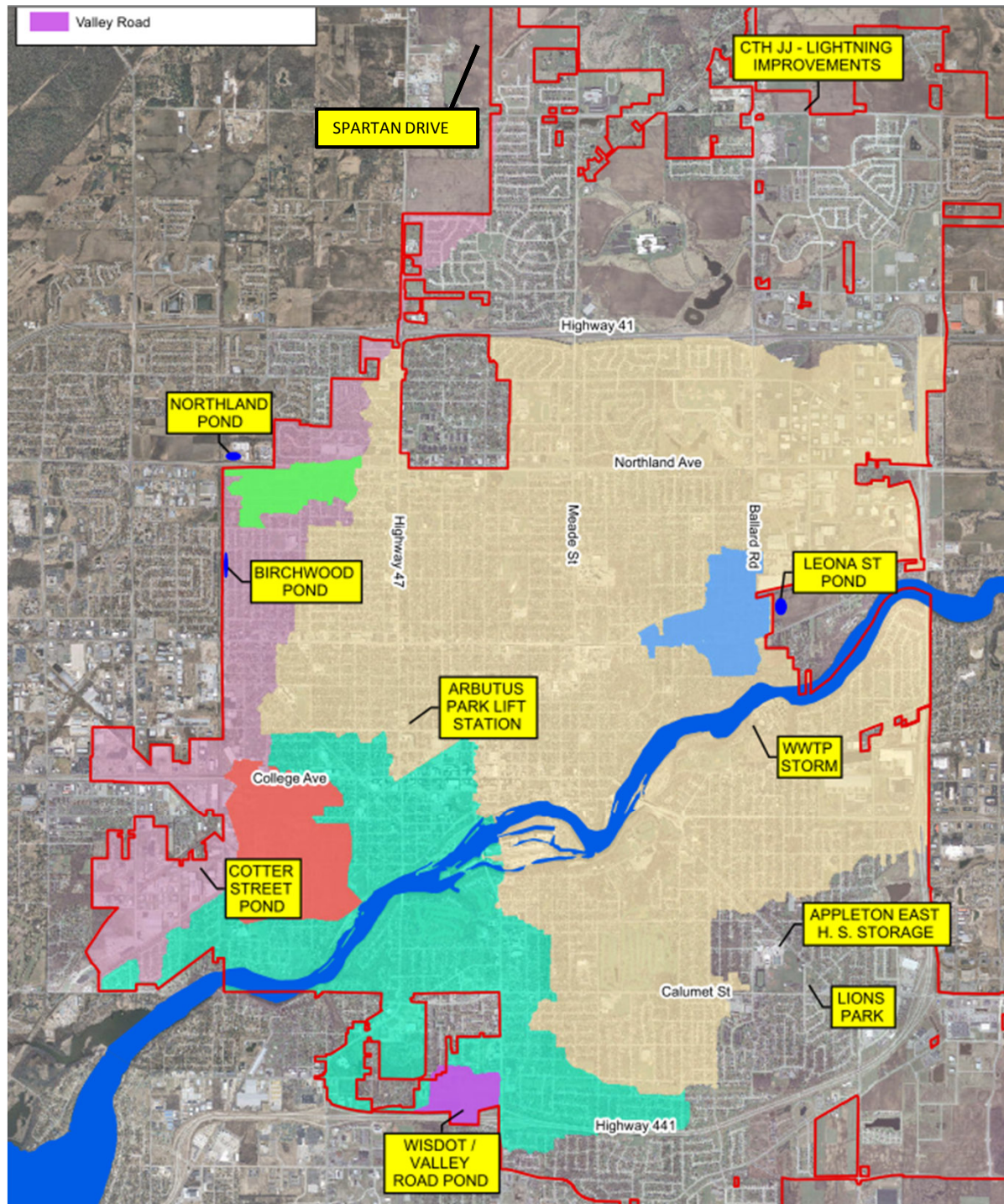
- Public Education and Outreach
 - Northeast Wisconsin Stormwater Consortium (NEWSC)
 - Example: Summer Camp
 - Plan update needed
- Public Involvement and Participation
 - Tied to Public Education and Outreach
 - Example: April 25, 2015 River Cleanup
- Illicit Discharge Detection and Elimination
 - On-going field screening (In Progress)
 - Ordinance Update (Complete)
- Construction Site Pollution Control
 - Ordinance and Program update



NR 216 Permit

- Post-Construction Stormwater Management
 - Ordinance and Program update (In Progress)
 - Approximately double the plan reviews in 2015 as 2014
- Pollution Prevention
 - 2 requirements added to the new permit
 - Additional reporting required
 - Program to be updated (In Progress)
 - Also updating site specific SWPPP's
- Stormwater Quality Management
 - City-wide SWMP update fall 2014
- Storm Sewer System Map and Annual Report





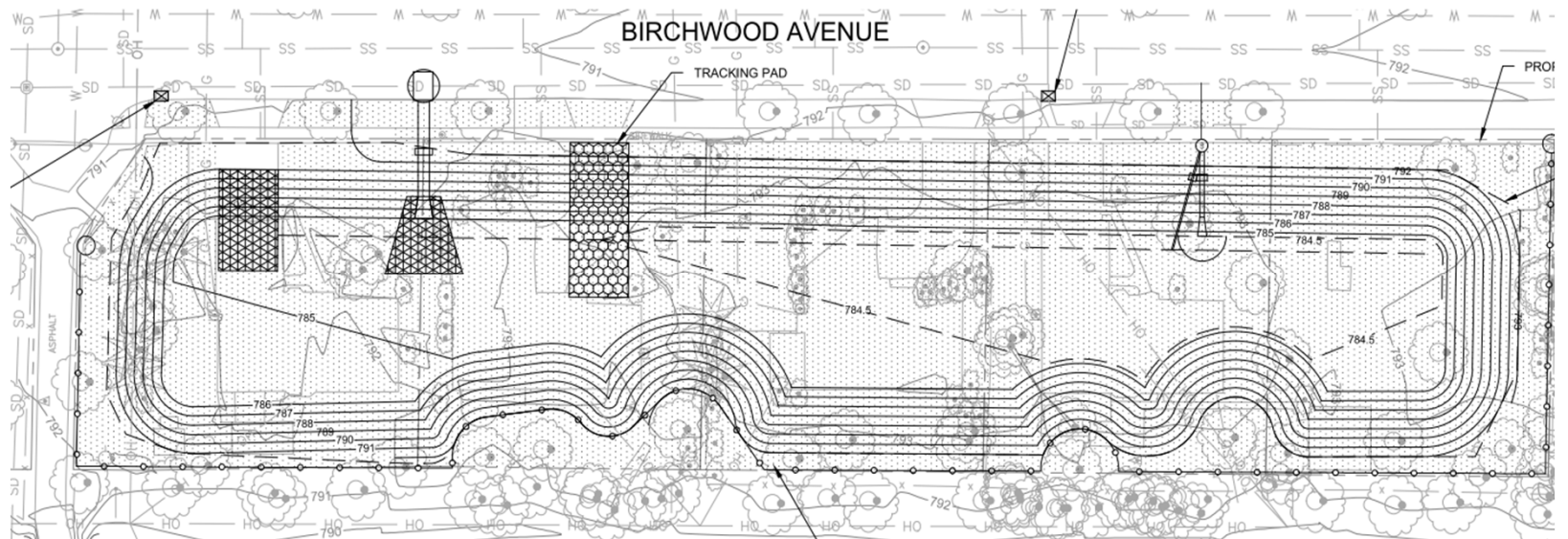
Capital Projects

- Birchwood Pond
- Northland Pond
- Lions Park
- Cotter Street
- Storm sewer relocation at Wastewater Treatment Plant
- Arbutus Park Lift Station
- Appleton East HS Stormwater Storage
- WISDOT/Valley Road Pond
- Leona Street Pond
- PaveDrain Permeable Pavement
- Storm sewer upgrades prior to street reconstruction
- Spartan Drive and Lift Station



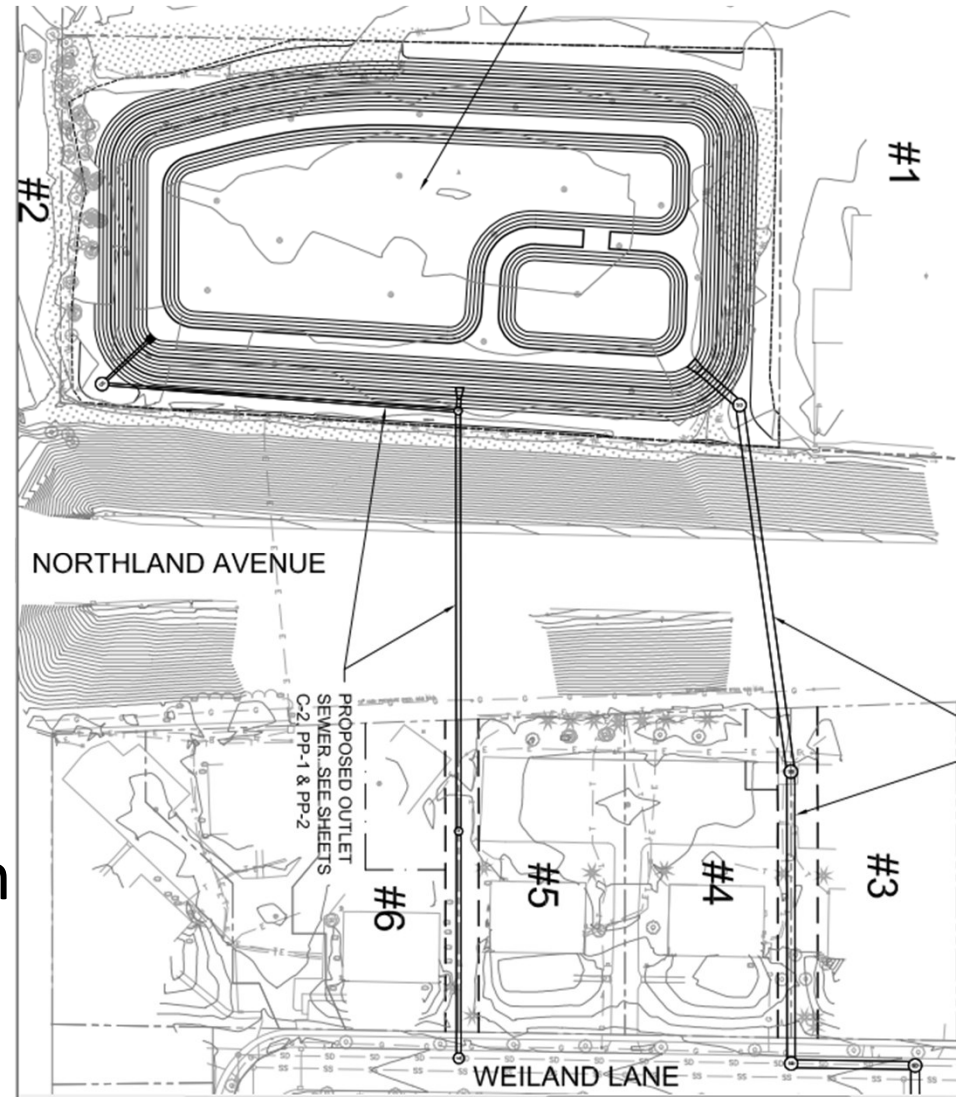
BIRCHWOOD POND

- Phase I of West Wisconsin Stormwater Study
- Substantial Completion was July 2015
- Landscaping Amenities in Fall 2015



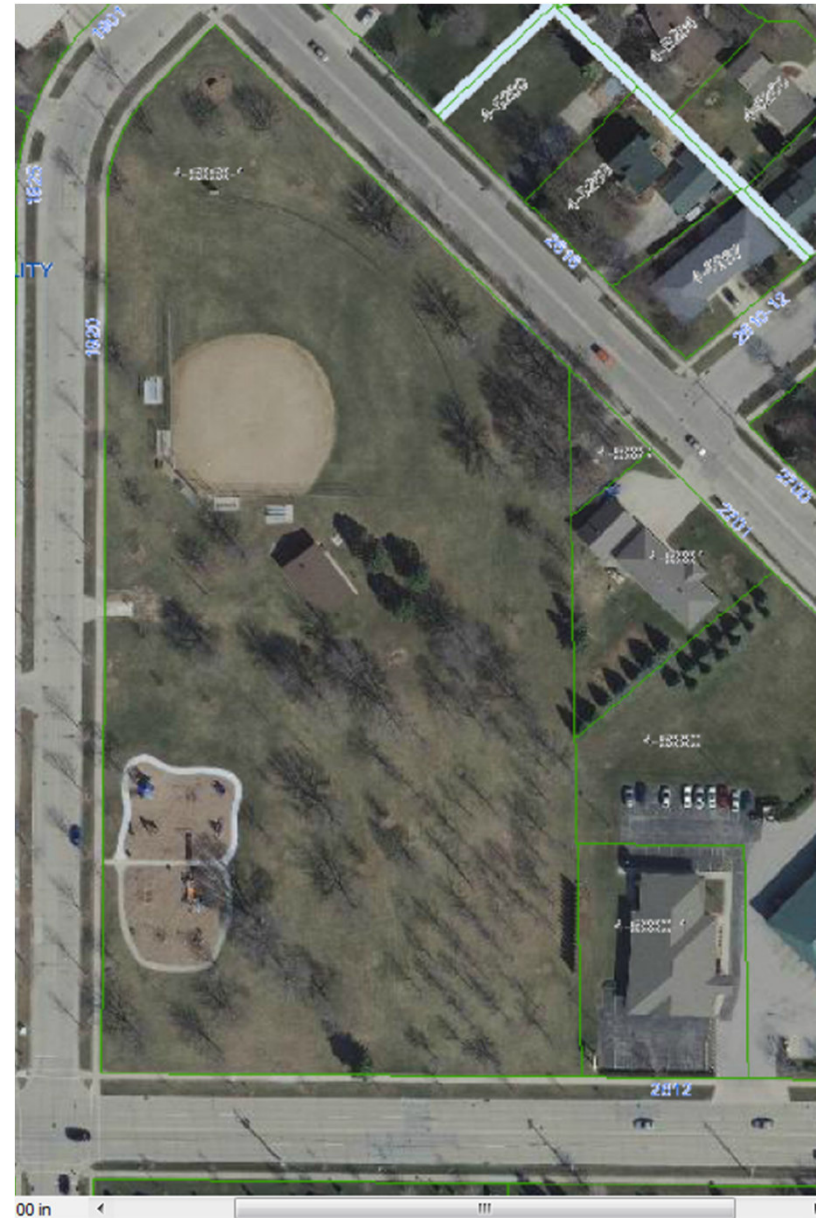
NORTHLAND POND

- Phase 2 of W. Wisc. Study
- Final Design In Progress
- 60% plans due October 12
- Looking for site to accept Low Hazard Grant of Exemption Soils
- Disposal site(s) needed to obtain DNR Permit
- Planned 2017 Construction



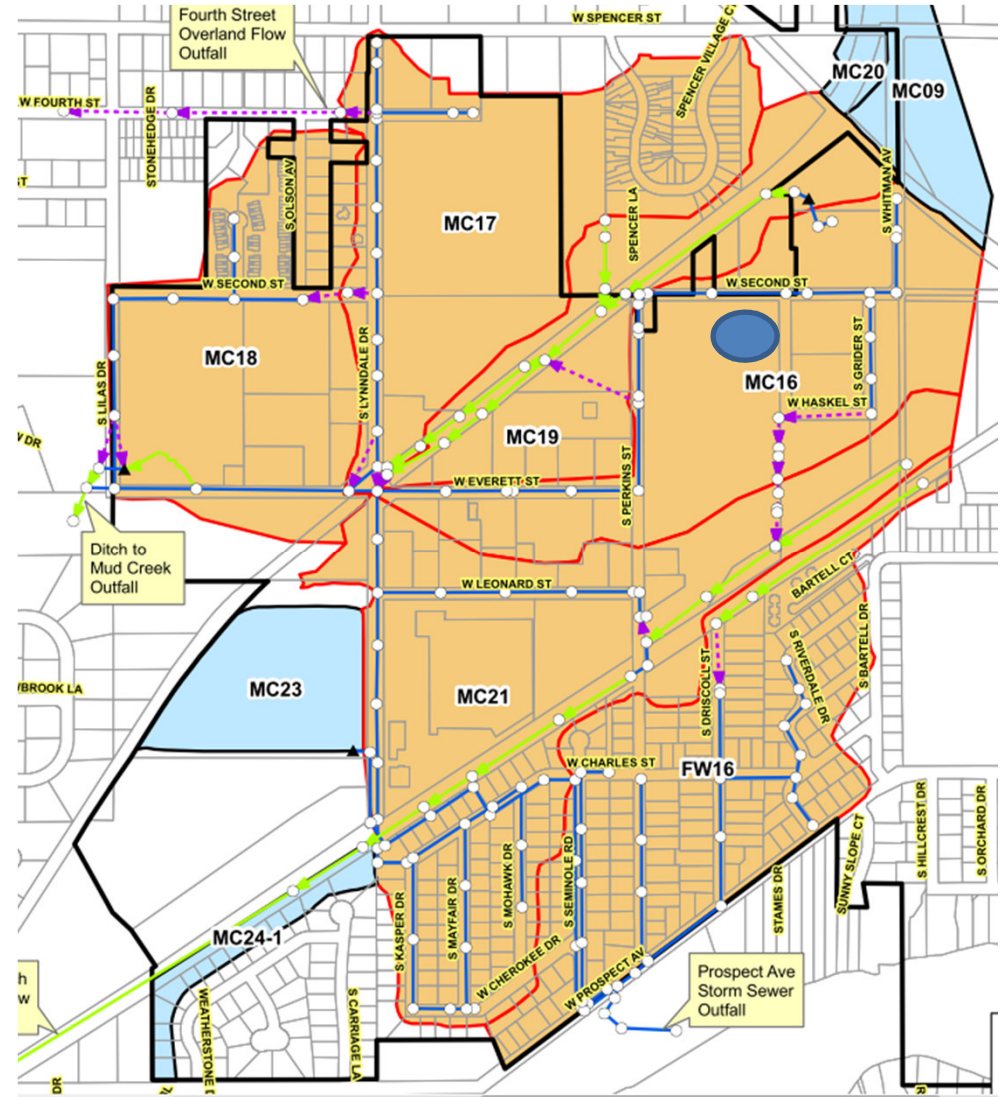
LIONS PARK

- Three soil borings completed early June
- Two were made into groundwater level monitoring wells
- Taking water level measurements
- Next committee/council decision point in Fall 2016



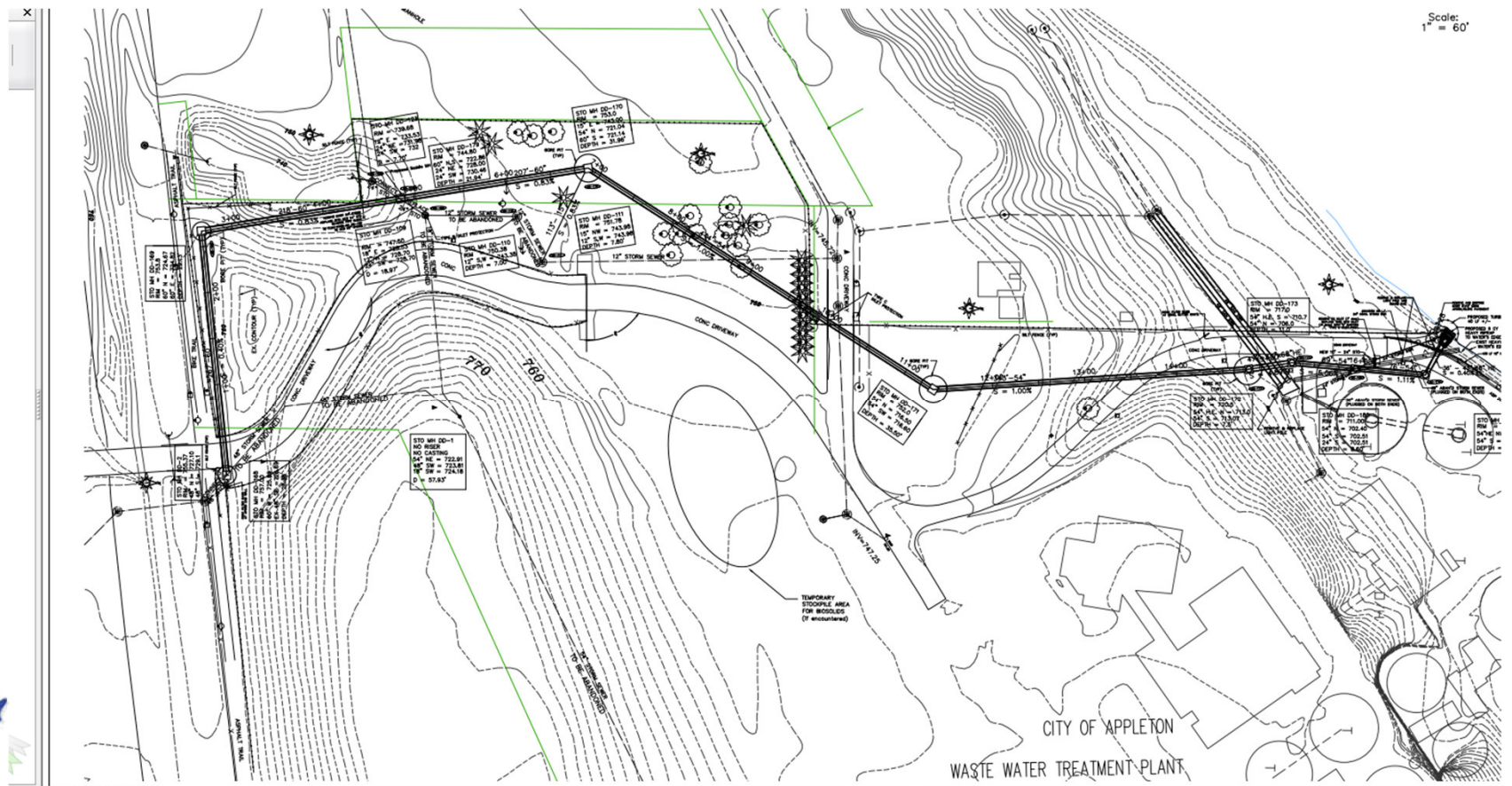
COTTER STREET

- 2010 Leonard St Study-
sewers in area undersized,
no feasible alternative
- Possible pond project with
private owner
- Land/Final Design in 2016
- Construction in 2017



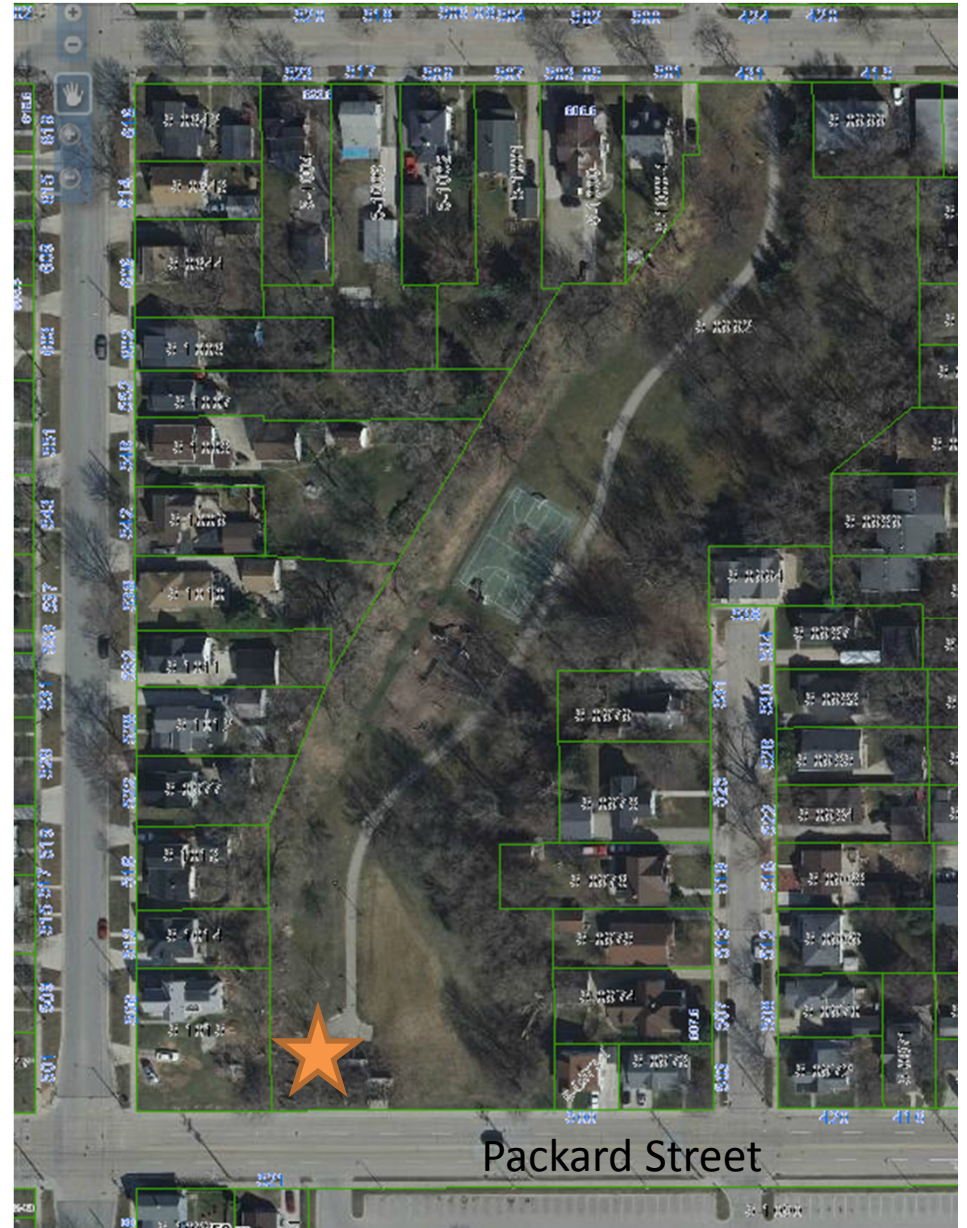
WWTP Storm Sewer Reroute

- Response to DNR directive
- Rebid in 2015
- Construction approximately 20% complete



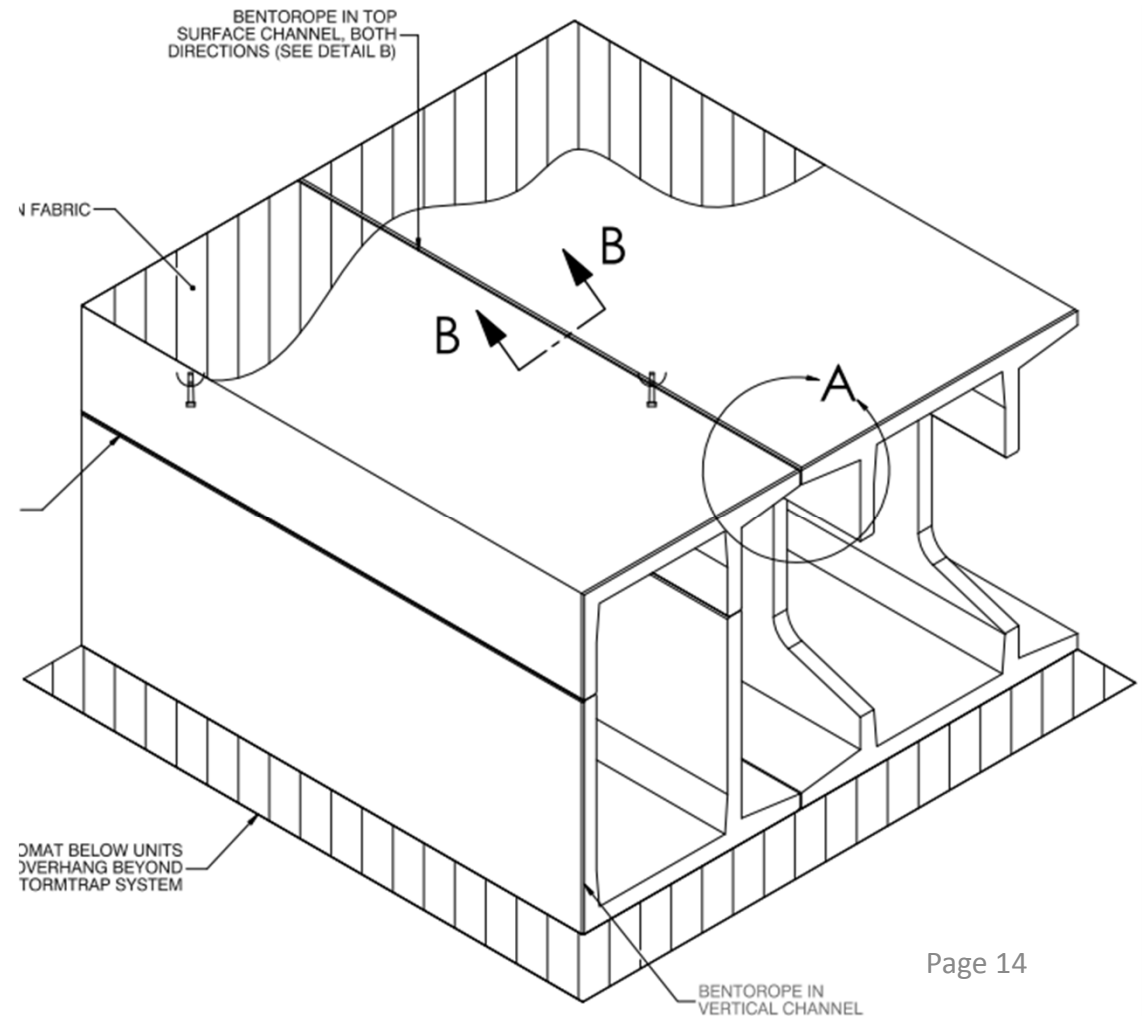
ARBUTUS PARK

- Stormwater Lift Station Maintained by Utilities
- Repairs are increasing
- Received proposals for 2015 Conditions Assessment on September 4
- Design/Construct in 2016
- High End Estimate \$140K if replacement needed



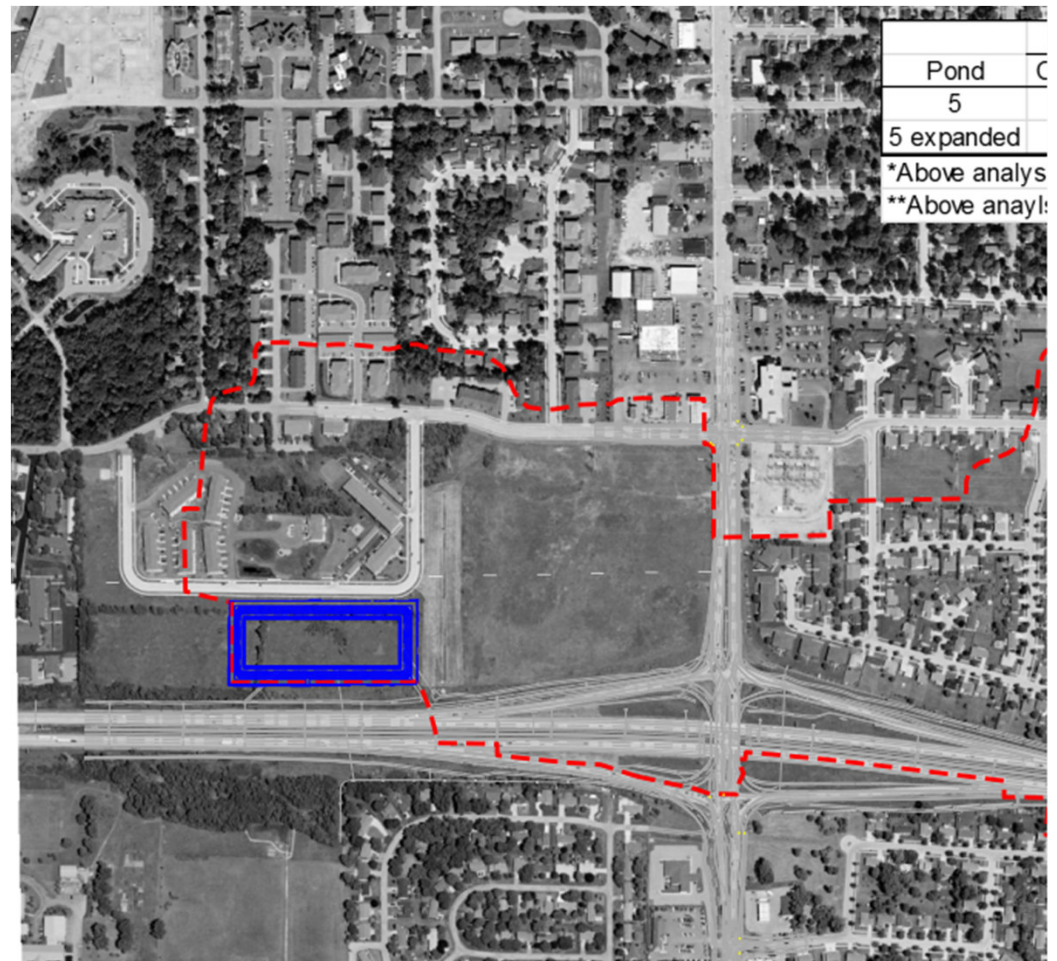
Appleton East HS Storage

- Additional access and surface lot drainage installed in late July
- Landscaping and other warranty items remain



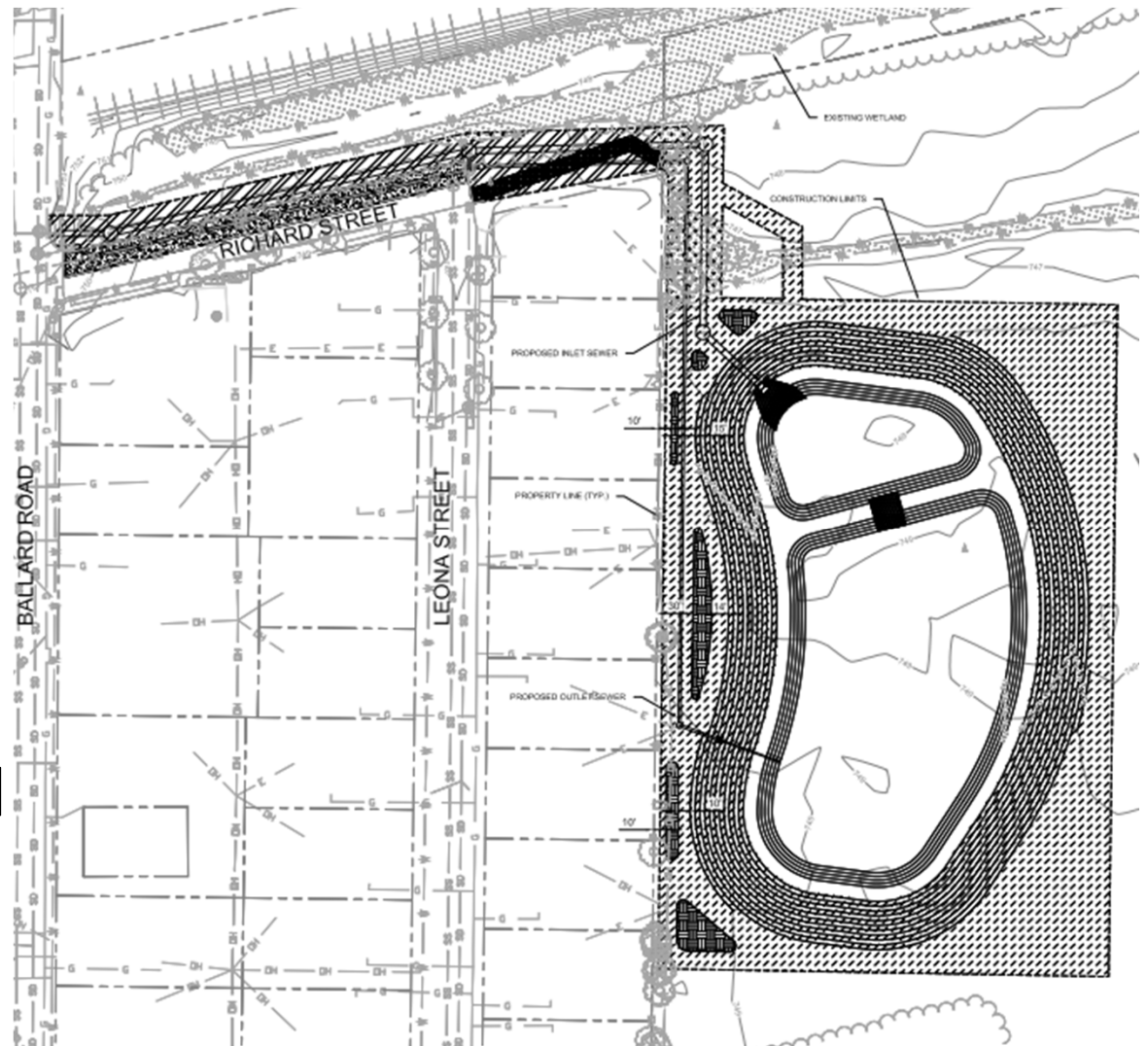
WisDOT/Valley Road Pond

- DOT- led project to expand pond
- Anticipated Cost Share w City
- Anticipated 2017-2018 Construction



Leona Street Pond

- Preliminary Design Complete
- Met with Neighbors September 15
- Final Design/Land in 2016
- Anticipated 2018 Construction
- Design to Include Enhanced P Removal



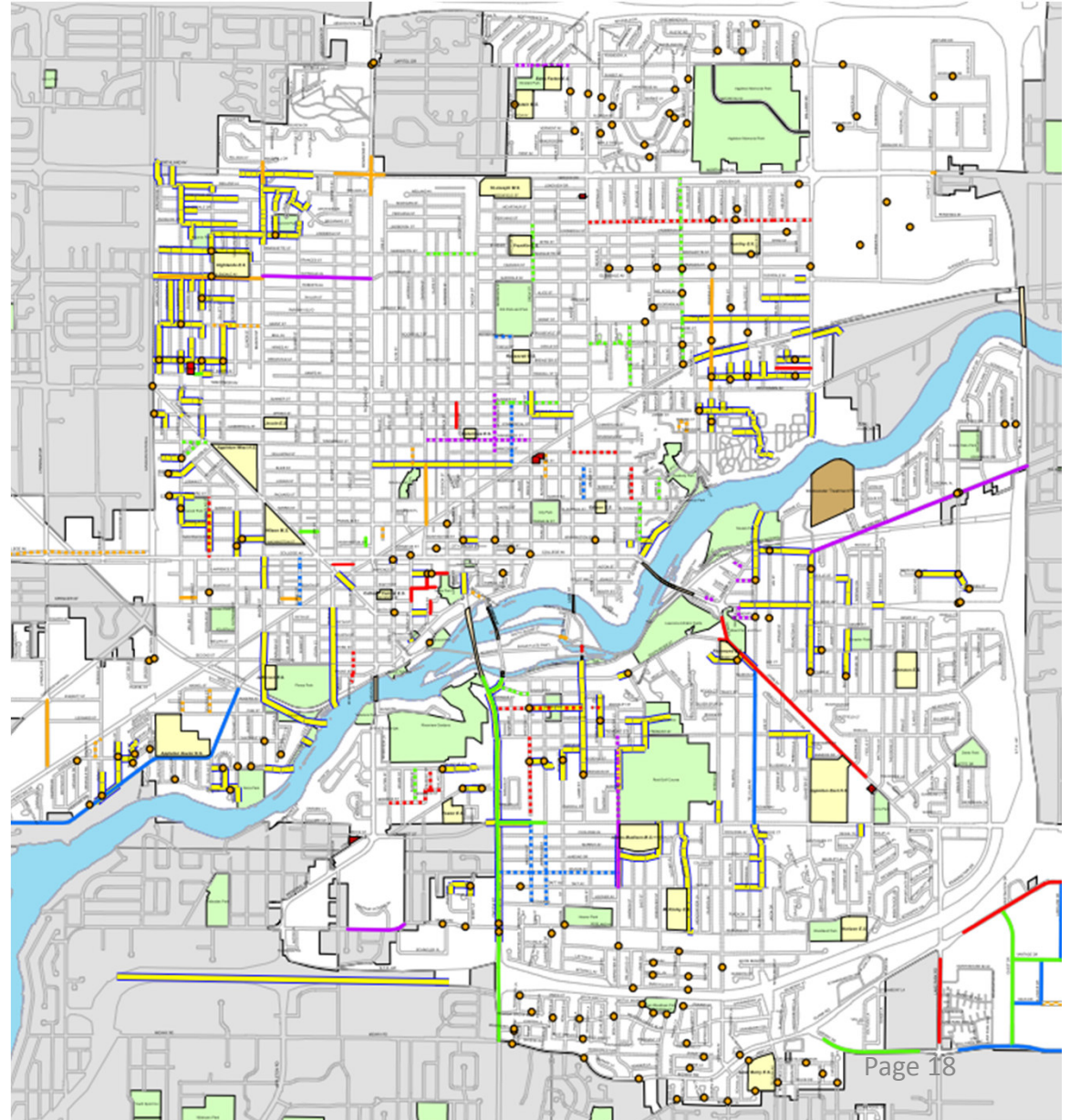
PaveDrain Permeable Pavement

- Pilot Projects at Fire Station #2 and Sandra St this Fall
- Flood Reduction and Water Quality



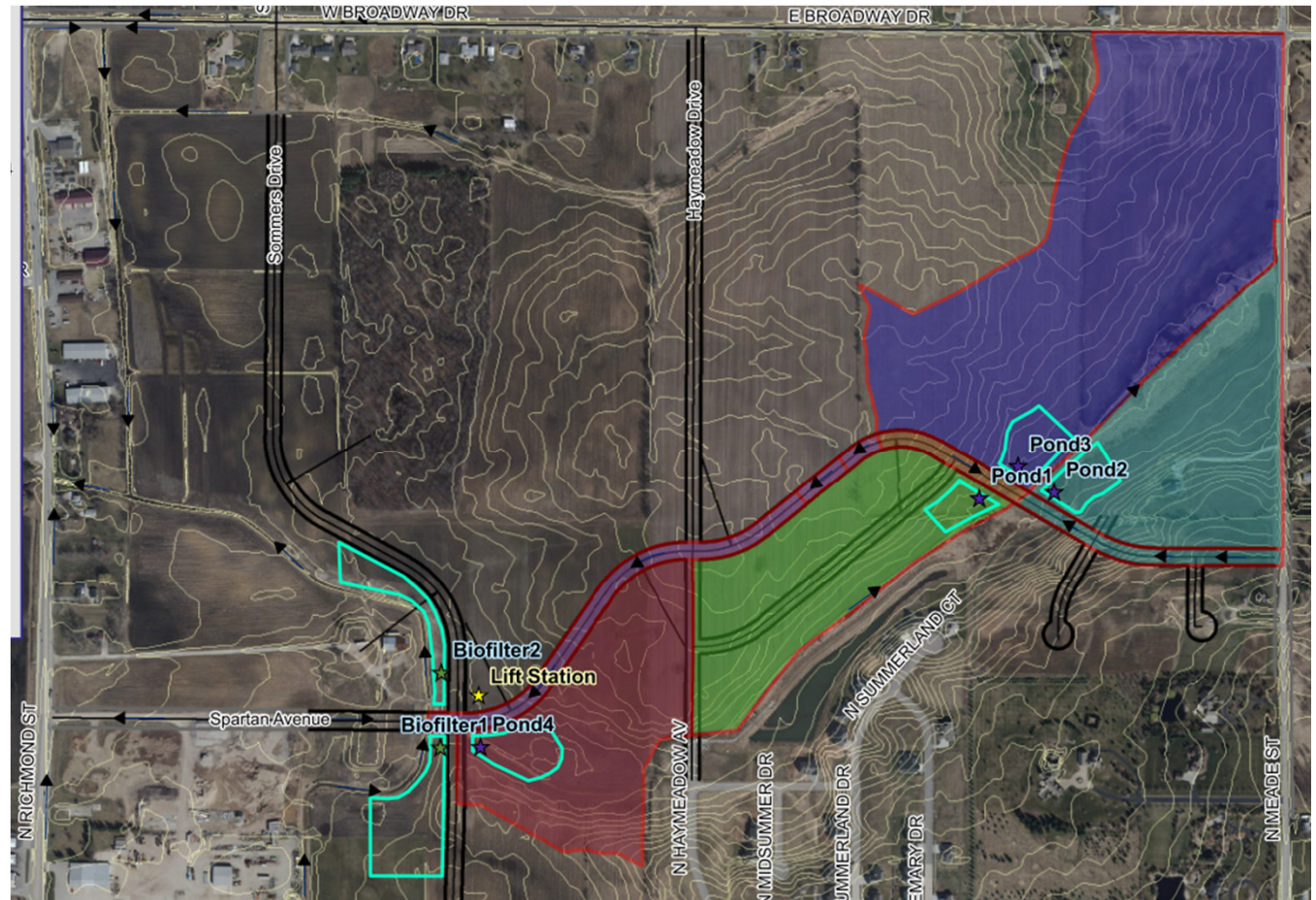
Storm Sewer Upgrades

- Pursuing drainage study recommendations
- Coordinating with paving schedule
- 2015: Douglas, John, McKinley
- 2016: Owaissa, Grant, Lawrence, Glendale, Mason, Spring



Spartan Drive/Lift Station

- Preliminary Engineering for stormwater facilities and box culvert 2015/16
- SWMP and Final design for Lift Station storm facilities in 2015/16
- Final design for box culvert and stormwater facilities in 2016



2016 Capital Budget Request

- Cotter Street Pond Design and Land Acquisition
- Leona Street Pond Design and Land Acquisition
- Arbutus Park Lift Station Design/Construction
- Northland Pond Utility Relocations
- Storm sewer upgrades prior to street reconstruction

