

**To:** Municipal Services Committee  
**From:** Mike Hardy, Assistant Traffic Engineer  
**Date:** June 01, 2023  
**Re:** New parking restriction on the 2500-2700 block of N Roemer Road (adjacent The Boldt Company)  
*Follow-Up to Six-Month Trial Period*

In response to a concern raised by Boldt Company, the City implemented a new parking restriction for a 6-month evaluation period that began in November of 2022. The new parking restriction was placed on the west side Roemer Road, beginning just south of the Central Transport driveway, extending south 200’ across the Boldt driveway. The concern is when Boldt employees and visitors park too close to their north service driveway, it complicates maneuvering and good visibility of Roemer Road traffic for their construction fleet vehicles.

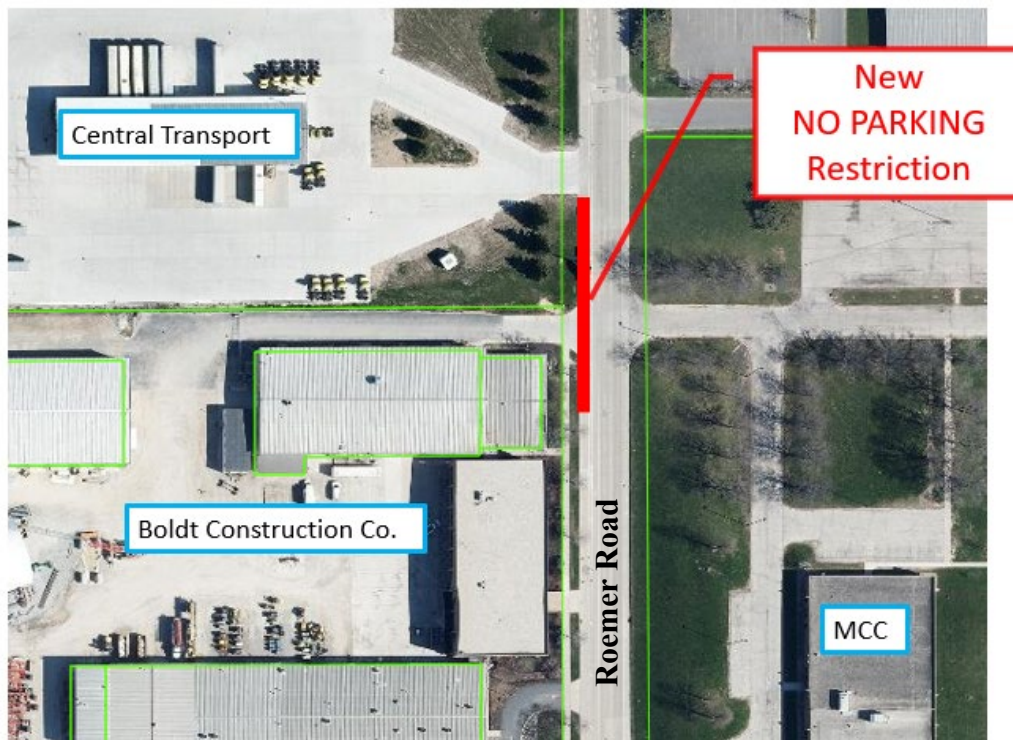


Figure 1: New NO PARKING Restriction, west side of Roemer Road, extending 200-FT south of Central Transport driveway.

A Boldt company representative acknowledged the change has helped. Central Transport was supportive of the trial but did not provide any additional feedback to a recent contact. We did not receive any other feedback or complaints during the six-month trial period. Based on this, we recommend making the change permanent.

**To accomplish this, the following ordinance action is required:**

1. **Create:** “Parking be prohibited on the west side of Roemer Road from a point 510 feet south of Northland Avenue to a point 710 feet south of Northland Avenue.”