

Ongoing Field Screening Program 2020 Revision

Illicit Discharge Detection and Elimination Program
City of Appleton

December 4, 2020

ENGINEERING • ARCHITECTURE • ENVIRONMENTAL



Project #: R3000901.00

Illicit Discharge Detection and Elimination
Conducted For

City of Appleton

Ongoing Field Screening Program
2020 Revision

Prepared by:

OMNNI Associates
One Systems Drive
Appleton, WI 54914-1654
(T) 920/735-6900
(F) 920/830-6100
www.omnni.com

December 4, 2020

Table of Contents

PURPOSE AND AUTHORITY.....	1
OUTFALL SUMMARY	1
PERMITTED AREA	1
OUTFALL DEFINITION AND CLASSIFICATION	1
ONGOING FIELD SCREENING PROGRAM.....	2
OUTFALL SELECTION AND INSPECTION FREQUENCY	3
TIMING OF SCREENING	4
FLOWING OUTFALLS.....	5
PHYSICAL INDICATOR PARAMETERS.....	5
CHEMICAL INDICATOR PARAMETERS.....	6
CHEMICAL INDICATOR ACTION LEVELS	7
REPEAT SCREENING	7
DOCUMENTATION	8
UPDATES AND REVISIONS	8

List of Appendices

Permitted Area Map and MS4 Outfall Map.....	A
Priority Outfall Map	B
Outfall Summary Table	C
Proposed Outfall Screening Schedule	D
Repeat Screening Process Flowchart	E

PURPOSE AND AUTHORITY

In compliance with the provisions of Wisconsin Statutes Chapter 283 and Wisconsin Administrative Code Chapters NR 151 and NR 216, owners and operators of municipal separate storm sewer systems (MS4) are permitted to discharge stormwater from the MS4 to waters of the state. The Wisconsin Department of Natural Resources (WDNR) regulates these discharges via a Wisconsin Pollutant Discharge Elimination System (WPDES) permit. The current permit – “General Permit to Discharge Under the Wisconsin Pollutant Discharge Elimination System” (WPDES Permit No. WI-S050075-3) – was issued on May 1, 2019 and is effective through April 30, 2024. This is the third issuance of the MS4 General Permit – prior permits were issued in 2006 and 2014.

To comply with the IDDE requirements of the MS4 General Permit, OMNNI Associates (OMNNI) assisted the City of Appleton with the development of an ongoing screening program. The ongoing screening program was originally developed in 2009, and it was updated in 2014 prior to the issuance of the second permit. This 2020 update incorporates the new requirements of the current MS4 General Permit and brings the ongoing screening program into compliance.

OUTFALL SUMMARY

Permitted Area

The conditions and requirements of the MS4 General Permit apply to all areas under the ownership, control or jurisdiction of the permittee in the “permitted area.” In most cases, the permitted area consists of the Urban Area (as determined by the U.S. Census Bureau), along with adjacent developing areas.

Nearly all of the City of Appleton is contained in the Urban Area from the 2010 census. A small portion of the extreme northern end of the City was not included in the 2010 Urban Area. However, because development is already occurring in those areas, they were included in the Permitted Area.

As a result, the Permitted Area consists of the entire City of Appleton, with the exception of the former Mackville Landfill, which consists of a detached 120-acre parcel northwest of the City, surrounded by the Town of Center.

A map showing the 2010 urbanized area, along with the permitted area, is included in Appendix A.

Outfall Definition and Classification

Under the current MS4 General Permit, an outfall is defined as “the point at which storm water is discharged to waters of the state or to a storm sewer (e.g., leaves one municipality and enters another).” The MS4 is defined as “a conveyance or system of conveyances including roads with drainage systems, municipal streets, catch basins, curbs, gutters, ditches, constructed channels or storm drains, which meets all of the following criteria:

1. Owned or operated by a municipality.
2. Designed or used for collecting or conveying storm water.
3. Which is not a combined sewer conveying both sanitary and storm water.
4. Which is not part of a publicly owned wastewater treatment works that provides secondary or more stringent treatment.”

OMNNI used the storm sewer mapping provided by the City of Appleton as a base map to update the current outfall map. Outfalls were identified at the locations where the City’s MS4 discharged to a water of the state, to an adjacent municipality, or outside the permitted area. Approximately 324 outfalls were identified during this process.

Approximate drainage basins were delineated for each outfall using past drainage studies, prior drainage basin delineations, subdivision drainage plans, and updated topographic information. Based on this information, each outfall was classified as “major” or “minor.” A “major outfall,” as defined by the MS4 General Permit, is an MS4 outfall that meets one of the following criteria:

1. A single pipe with an inside diameter of 36 inches or more, or from an equivalent conveyance (cross sectional area of 1,018 square inches) which is associated with a drainage area of more than 50 acres.
2. A municipal separate storm sewer system that receives storm water runoff from lands zoned for industrial activity that is associated with a drainage area of more than 2 acres or from other lands with 2 or more acres of industrial activity, but not land zoned for industrial activity that does not have any industrial activity present.

Outfalls not meeting the definition of a major outfall are considered “minor outfalls.” OMNNI has also worked with the WDNR to develop a third class of outfalls – “supplemental” outfalls. Supplemental outfalls are storm sewer outfalls which may not meet the definition of an outfall according to the MS4 General Permit but should be included in an ongoing field screening program. The majority of the supplemental outfalls are pipes that discharge to a detention basin or MS4 channel. These pipes do not discharge directly to a water of the state, and therefore are not technically outfalls. However, sampling these locations is an important component of the overall screening process, as illicit discharges are more likely to be discovered closer to the source rather than after being diluted in a detention basin or mixed with other discharges in a channel.

The resulting MS4 map includes 324 outfalls, classified as follows:

- 43 major outfalls
- 86 minor outfalls
- 195 supplemental outfalls

A map showing the current configuration of the MS4 outfalls is included in Appendix A. The MS4 outfall map will be revised as outfalls are added, removed or modified. This should occur annually after the City’s GIS system has been updated with the previous year’s construction.

ONGOING FIELD SCREENING PROGRAM

The proposed ongoing field screening program for the City of Appleton is described in the sections that follow.

OUTFALL SELECTION AND INSPECTION FREQUENCY

The current MS4 General Permit contains the following guidelines for setting the outfall screening schedule:

- 100% of the total major outfalls at least once during the term of the permit [5 years]
- Select minor outfalls for annual on-going dry weather field screening during the term of the permit [5 years]

The MS4 General Permit also requires that a prioritization procedure be developed for selecting the minor outfalls, giving consideration to:

- Hydrological conditions
- Total drainage area of the site
- Population density of the site
- Traffic density
- Age of the structures or buildings in the area
- History of the area
- Land use types

The concept of outfall prioritization was initially introduced in the “Program Guidance #3800-2012-01” (3/15/2012) document that WDNR released for IDDE. In an attempt to provide a more targeted screening approach, the Guidance introduced the concept of “priority outfalls” to prioritize the outfalls based on the illicit discharge potential in the contributing drainage area rather than solely on the pipe or drainage area size. Based on the Guidance, contributing drainage area characteristics or land uses that should be considered when selecting priority outfalls include:

- History of known or suspected illicit discharges reported within the last five years.
- Sections of storm sewer and/or sanitary sewer infrastructure that have exceeded or are approaching their design/useful life.
- Contributing drainage areas with 80 or more percent imperviousness.
- Businesses or industrial parks with frequent changes in property ownership or operations.
- Schools or other institutional facilities.
- Commercial or industrial operations that generate wastewater or wash water including food processing, metal plating or machining shops, auto and scrap recyclers, commercial car washes and chemical manufacturers or users.

Based on OMNNI’s experience with outfall screening, the criteria associated with the March 2012 guidance document were more appropriate for identifying outfalls with higher potentials for illicit discharge. OMNNI received approval from WDNR (Suzan Limberg, 7/14/2020) to use the March 2012 criteria for prioritization, based on our professional judgement and experience.

The outfalls were evaluated and given a prioritization score based on the various prioritization criteria, with higher scores indicating higher risks of potential illicit discharges. As a more conservative screening approach, all outfalls were prioritized (major, minor and supplemental),

and those with prioritization scores of 20 or higher were considered Priority Outfalls, which would be screened annually.

After evaluating each outfall and associated drainage basin, the outfalls were classified as “priority,” “non-priority major”, or “non-priority non-major” outfalls. The classification produced the following results:

- 49 priority outfalls
- 29 non-priority major outfalls
- 246 non-priority non-major outfalls

A map showing the locations of the priority outfalls is included in Appendix B.

The City will use a screening schedule that is more aggressive than the minimum permit requirements. This will provide for the screening of all outfalls over a ten-year cycle, which may reveal potential illicit discharges at outfalls that might have otherwise gone unscreened.

- Priority outfalls will be screened each year, which meets the permit requirement for annual screening.
- Non-priority major outfalls will be screened once every 5 years, which meets the permit criteria for major outfalls.
- The remaining non-priority, non-major outfalls will be screened at least once every 10 years.

A tentative screening schedule for the non-priority outfalls is included in this plan; however, the City reserves the right to revise the actual screening schedule for the non-priority outfalls as long as the goal of screening all non-priority outfalls every 5 years (major outfalls) or 10 years (non-major outfalls) is accomplished.

A table showing the priority status of each outfall, along with the proposed screening frequency, is included in Appendix C. The proposed outfall screening schedule, which lists the outfalls to be screened during the first ten years of this revised ongoing screening program, is included in Appendix D.

TIMING OF SCREENING

The MS4 General Permit specifies that dry weather screening should be conducted for all outfalls. This minimizes the potential interference from non-illicit sources including runoff and groundwater. The 2014 Guidance recommends a minimum of 48 hours between the end of a precipitation event and screening.

If possible, it is recommended to wait a minimum of 72 hours after the end of a runoff producing rainfall event, as this will allow stormwater detention basins and other peak flow limiting devices to discharge the rainfall volume. In addition, screening should be avoided in early spring due to snowmelt and elevated groundwater levels.

FLOWING OUTFALLS

If an outfall exhibits dry weather flow during the field screening (48 hours after the end of a rainfall event), a sample should be collected to test for the presence of substances that are common indicators of illicit discharge. When possible, this sample should be collected from a free-flowing discharge at the end of the pipe or channel representing the outfall. A free-flowing sample is desirable to avoid interference by substances that may be located in the receiving waters.

In the event that the outfall is partially submerged (e.g., part of the pipe is visible above the water surface) or fully submerged (e.g., the entire pipe is below the water surface of the receiving water), an alternate screening method is typically used. This alternate screening method for submerged outfalls was developed by OMNNI and approved by the WDNR Northeast Region in 2009. For submerged outfalls, a limited physical indicator screening should be conducted at the actual outfall. A sample should then be collected from the next-closest accessible point. In most cases, this will be the first manhole upstream of the outfall. This location should reduce the impact of the receiving water on the sample but minimize the number of potential connections between the access point and the outfall.

If there is no flow or submerged pool at the upstream access point, this fact should be noted, and no sample is required. If a visible flow is observed, a sample should be collected from this flow. If pooled water is present, a sample should be collected from the pool. For all upstream sampling, a note is made of the distance and land use of the area between the outfall and the upstream area to assess the potential for illicit connections between the outfall and the upstream location.

The samples collected from the outfall and/or upstream access points will be used during the evaluation of the physical and chemical indicator parameters. The volume of the sample required will depend on the number and type of tests that will be conducted for chemical indicator parameters.

PHYSICAL INDICATOR PARAMETERS

The evaluation of physical indicators of potential illicit discharge will be included during the screening of both flowing and non-flowing outfalls. For non-flowing outfalls, physical indicator parameters are the sole source of data, and will only reveal potential past illicit discharges. For flowing outfalls, physical indicator parameters can be evaluated in conjunction with chemical indicator parameters to identify both active and past illicit discharges.

The list of physical indicator parameters to be evaluated for both flowing and non-flowing outfalls includes:

- Detection and characterization of any odor, including petroleum, VOC/solvent, sulfur, chlorine, sewage, fishy, fragrant or musty odors
- Presence of gross solids, including litter/garbage, vegetative debris and sediment
- Evidence of inhibited or excessive vegetation around the outfall
- Benthic growth on the surface of the pipe/channel or downstream channel

- Stains on the pipe/channel, including oil, rust, paint, corrosion, or general flow line stains

In addition, the following physical indicator parameters should be evaluated at all flowing outfalls:

- Qualitative description of the flow rate (trickle, moderate or substantial)
- Presence of floatable materials, including petroleum sheens, suds/bubbles, algae or sewage
- Subjective description of the turbidity of the sample
- Presence of any colors in the flow or sample
- Identification of non-illicit discharge characteristics, including natural (bacteria) sheen or suds due to natural surfactants

When upstream sampling is conducted for submerged outfalls, the physical indicator screening should be conducted both at the outfall and at the upstream access point.

CHEMICAL INDICATOR PARAMETERS

The current MS4 General Permit specifies the indicator parameters that were required to be used during the initial outfall screening unless alternate parameters were approved by the WDNR. These indicator parameters include:

- pH
- Chlorine
- Copper
- Phenols
- Detergents

For the ongoing field screening program, the current permit provides more flexibility, allowing the municipality to customize the sampling protocol based on the source areas draining to the outfall. The City proposes to continue to use the parameters that have been in use since the 2014 ongoing field screening program:

- pH
- Sample temperature
- Conductivity
- Ammonia
- Chlorine (total and free)
- Detergents (anionic surfactants)

This list may be customized based on the source areas that are identified in the specific outfall drainage area, and in response to conditions that are observed during the screening. (For example, outfalls with a history of an oil sheen may warrant periodic testing for oil and grease or other petroleum-related parameters.) Additional tests that may be considered include:

- Phenols
- Copper
- Fluorides

- Nitrates/Nitrites
- Phosphorus
- E. coli
- RCRA metals
- Volatile organic compounds (VOC)
- Oil and grease

When sampling and chemical analysis is required, the sample should be collected using a sample container that is appropriate for the test(s) being conducted. For example, some test procedures require a certain container material (plastic vs glass), color (clear vs amber), or may require a preservative. The six default chemical indicators being recommended can be analyzed using a sample from one 500-mL unpreserved plastic bottle.

Chemical indicator tests should be conducted following the test manufacturer’s instructions. The specific tests used for each indicator parameter will be documented.

CHEMICAL INDICATOR ACTION LEVELS

Because some chemical indicator parameters may have naturally occurring background levels, action levels have been established to define when the detection of one or more chemical indicator parameters signals a potential illicit discharge that warrants further investigation. Detection of a chemical indicator parameter at levels below the action level will generally not be considered a potential illicit discharge unless it is combined with the presence of other chemical or physical indicator parameters.

The action levels for each of the required chemical indicator parameters are summarized below:

Parameter	Action Level
pH	Less than 6.0 or greater than 9.0
Sample temperature	Greater than ambient temperature
Conductivity	2,000 µS/cm
Ammonia	0.1 ppm (0.1 mg/L)*
Chlorine (total and free)	Positive detection
Detergents (anionic surfactants)	Positive detection

*Ammonia concentrations exceeding 0.1 ppm may be allowed if evidence of natural ammonia sources (i.e., decaying vegetation, flow over animal waste, etc.) are documented at the time of the inspection.

REPEAT SCREENING

Priority outfalls will be screened annually, regardless of the presence or absence of physical or chemical indicators. Priority outfalls will continue to be screened each year unless an outfall is reclassified as non-priority.

The sampling frequency for each non-priority outfall is once every five years for major outfalls, and once every ten years for non-major outfalls. If a non-priority outfall has dry-weather flow, a sample will be collected and analyzed for indicator parameters. If no indicator physical or chemical indicator parameters are present, no follow-up is required, and the next inspection will take place five or ten years later, unless an illicit discharge is reported prior to that time.

If indicator parameters are present at a non-priority outfall, the flow should be traced upstream to find the probable source. If the source is found and corrected, the incident will be considered closed, but the outfall will be sampled again the following year to verify that the discharge was eliminated. If no indicator parameters are present in the next year's sample, the outfall will resume its regular inspections according to the original 5- or 10-year cycle.

The repeat screening process is illustrated in the Repeat Screening Process Flowchart in Appendix E.

DOCUMENTATION

Following the completion of the outfall screening, an outfall screening report will be generated. The screening report format may be flexible, but must include the following information:

- Physical characteristics of the outfall (i.e., location, size, shape, material)
- Date and time of the screening and identification of the person conducting the screening
- Time since previous rainfall (i.e., less than 48 hours, 48-72 hours, more than 72 hours)
- Description of any flow observed during the screening
- Description of any physical indicators observed during the screening
- Results of the chemical indicator analysis conducted at outfalls with flow present during the screening
- Overall evaluation of the risk of illicit discharge at the outfall (i.e., unlikely, potential, obvious)
- Photographic documentation of the screening

In addition, an annual summary report will be prepared to document how many outfalls were screened during the year, which outfalls had potential or obvious illicit discharges, and what actions were taken to remedy any identified potential illicit discharges.

UPDATES AND REVISIONS

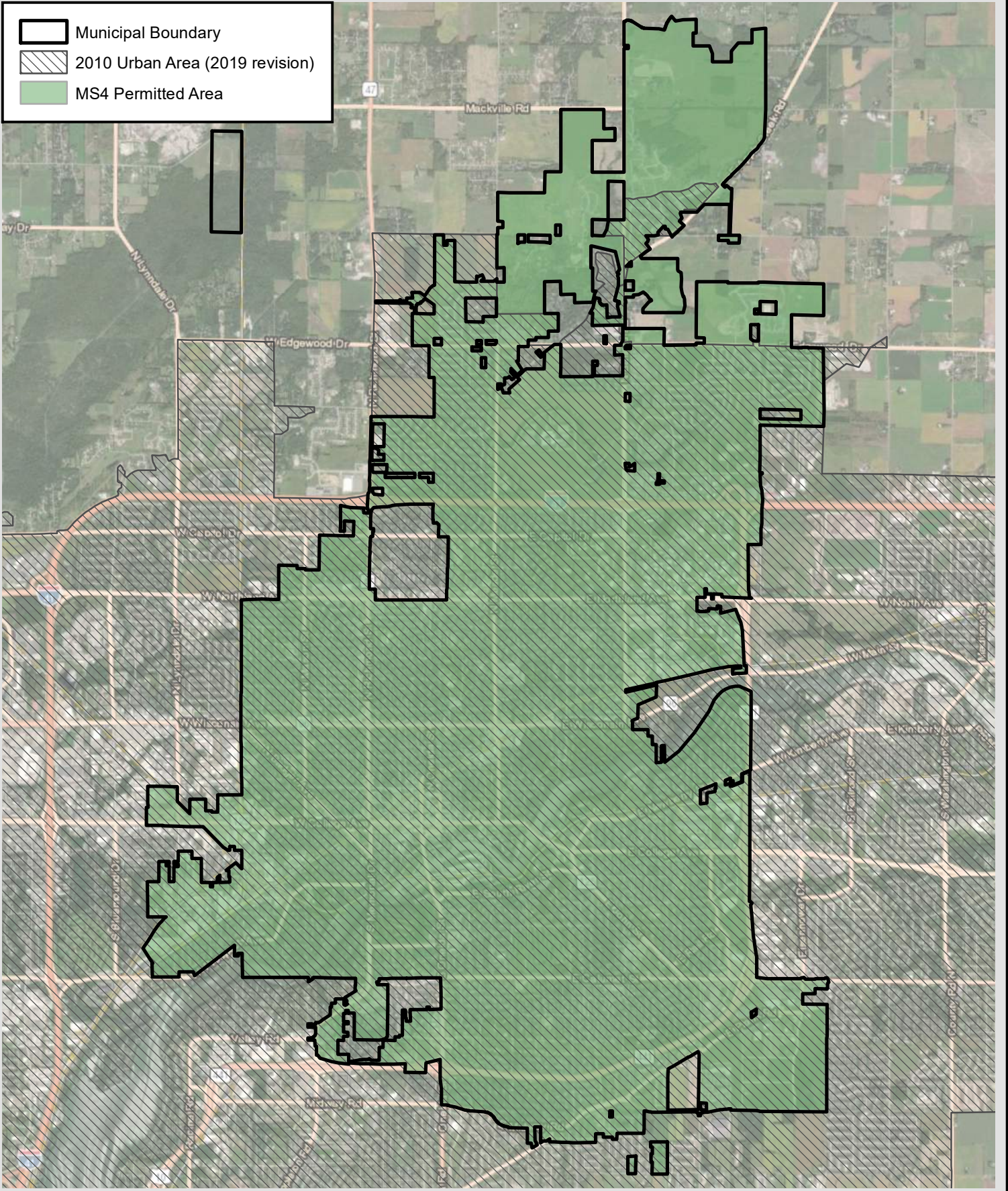
The MS4 Map will be updated annually to reflect the addition or removal of outfalls during the previous calendar year. As part of the MS4 Map update process, new outfalls will be classified as "major," "minor" or "supplemental," and the priority status will be determined. The outfall screening schedule will be updated to include the newly added outfalls. The initial screening of new outfalls should be scheduled as soon as practical so that the physical characteristics of the outfall can be field verified.

A record will be maintained to track which outfalls are added and removed each year, and screening records associated with removed outfalls will be archived.

If the City desires to change the screening parameters, action levels, screening frequencies, or other key components of the ongoing screening program, then it will be necessary to submit a revised ongoing screening program to the WDNR.

Appendix A

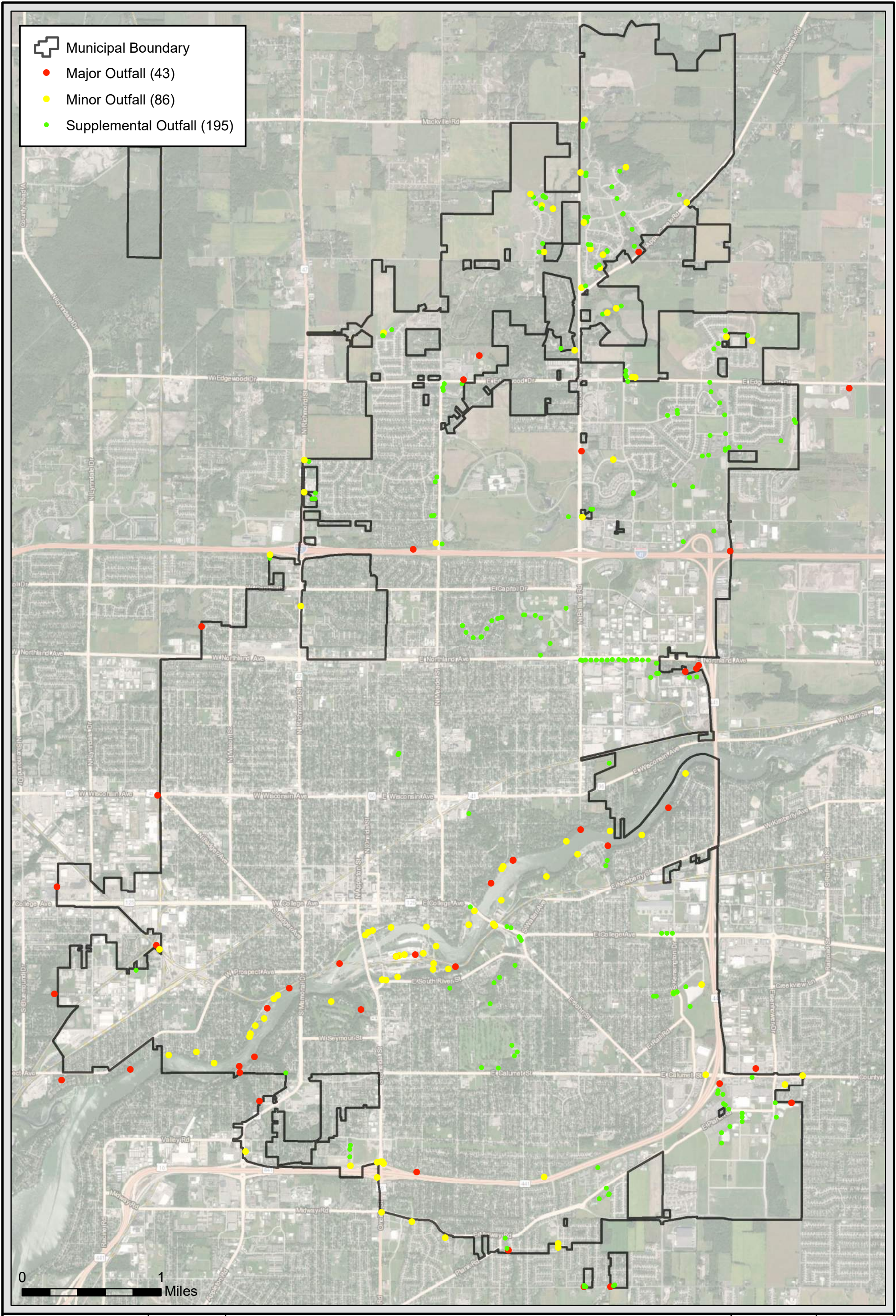
Permitted Area Map and MS4 Outfall Map



2020 IDDE ONGOING SCREENING PROGRAM
MS4 PERMITTED AREA
(BASED ON 2010 URBAN AREA)
 CITY OF APPLETON
 OUTAGAMIE/CALUMET/WINNEBAGO COUNTIES, WISCONSIN

Project Manager:
 Project Engineer:
 Drawn By: JCW
 Checked By:
 Date: 11/10/2020

SCALE:
 1" = 5,367'
 PROJECT NO.
R3000901.00
 FIGURE NO.
A-1



- Municipal Boundary
- Major Outfall (43)
- Minor Outfall (86)
- Supplemental Outfall (195)

0 1 Miles



**2020 IDDE ONGOING SCREENING PROGRAM
MS4 OUTFALL MAP**





CITY OF APPLETON
OUTAGAMIE/CALUMET/WINNEBAGO COUNTIES, WISCONSIN

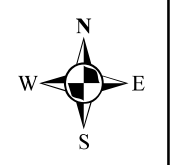
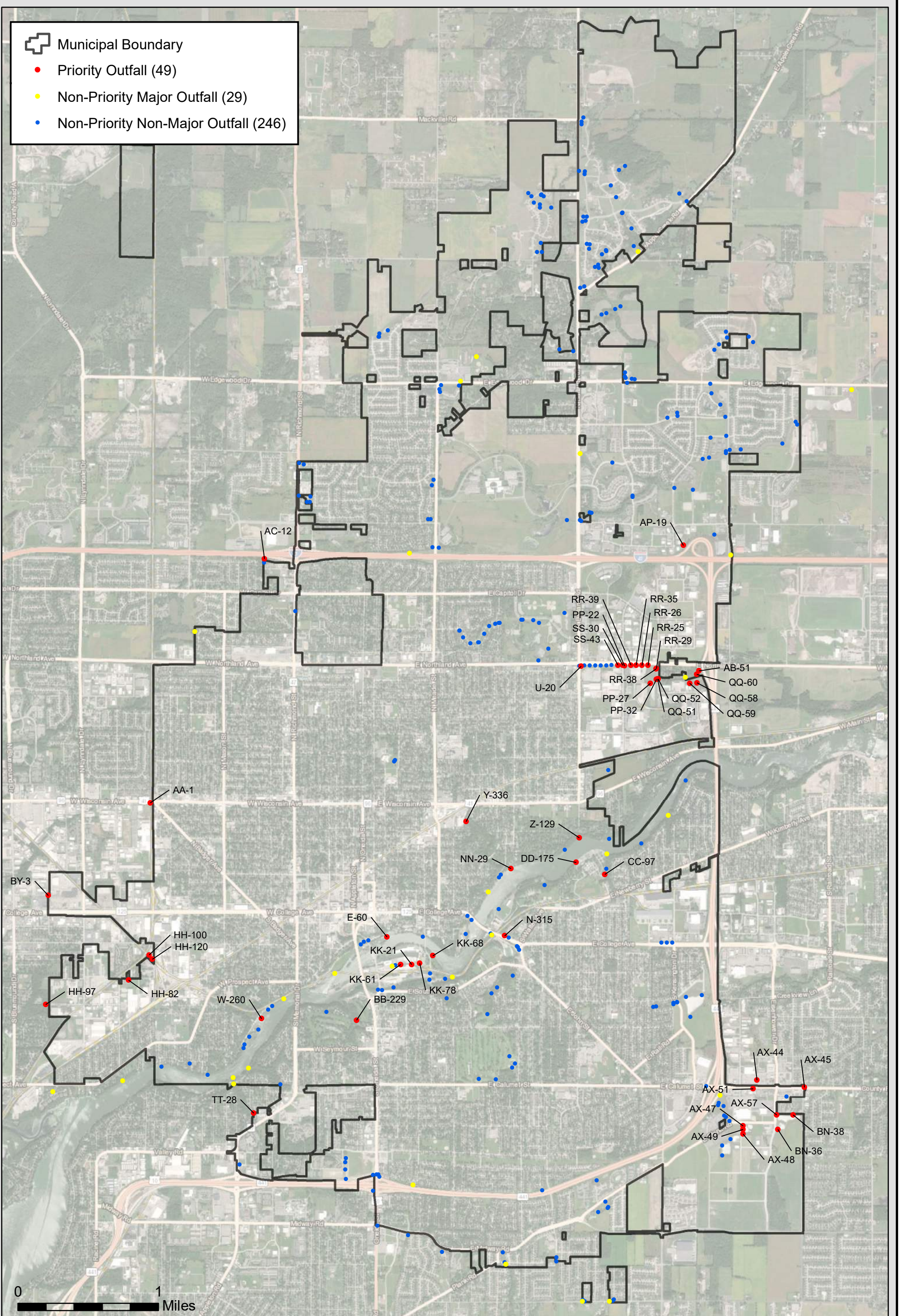
Project Manager:
Project Engineer:
Drawn By: JCW
Checked By:
Date: 11/10/2020

SCALE:
1" = 3,263'
PROJECT NO.
R3000901.00
FIGURE NO.
A-2

Appendix B

Priority Outfall Map

-  Municipal Boundary
-  Priority Outfall (49)
-  Non-Priority Major Outfall (29)
-  Non-Priority Non-Major Outfall (246)



2020 IDDE ONGOING SCREENING PROGRAM
PRIORITY OUTFALL MAP
 CITY OF APPLETON
 OUTAGAMIE/CALUMET/WINNEBAGO COUNTIES, WISCONSIN

Project Manager:
 Project Engineer:
 Drawn By: JCW
 Checked By:
 Date: 11/10/2020

SCALE:
 1" = 3,263'
 PROJECT NO.
R3000901.00
 FIGURE NO.
B-1

Appendix D

Proposed Outfall Screening Schedule

City of Appleton
2020 IDDE Ongoing Screening Program Update
Outfall Summary Table

Outfall ID	Drainage Area (acres)	Major/Minor Classification	Prioritization Scores										Priority Status	Screening Frequency
			5-yr History	Ongoing Issue	80% Impervious	Aging Sanitary	Aging Storm	Institutional	Industrial	Commercial	Multi-Family	Total Score		
A-21A	17.95	Minor	0	0	0	2	0	8	0	0	2	12	Non-Priority Non-Major	10 years
AA-1	464.33	Major	20	0	0	1	0	5	5	2	0	33	Priority	Annual
AB-51	153.97	Major	10	0	0	0	0	0	20	2	0	32	Priority	Annual
AC-12	13.97	Minor	20	0	0	0	0	0	0	8	0	28	Priority	Annual
AC-13	12.65	Supplemental	0	0	0	0	0	0	0	8	0	8	Non-Priority Non-Major	10 years
AD-312	16.68	Supplemental	0	0	0	0	0	0	0	0	0	0	Non-Priority Non-Major	10 years
AD-323	53.70	Supplemental	0	0	0	0	0	0	0	0	0	0	Non-Priority Non-Major	10 years
AD-332	6.22	Supplemental	0	0	0	0	0	0	0	0	0	0	Non-Priority Non-Major	10 years
AD-336	6.69	Supplemental	0	0	0	0	0	0	0	0	0	0	Non-Priority Non-Major	10 years
AD-338	70.93	Supplemental	0	0	0	0	0	5	0	0	0	5	Non-Priority Non-Major	10 years
AD-341	286.47	Supplemental	0	0	0	0	0	5	0	0	0	5	Non-Priority Non-Major	10 years
AD-342	8.63	Minor	0	0	0	0	0	0	0	0	0	0	Non-Priority Non-Major	10 years
AD-345	100.23	Major	0	0	0	0	0	8	0	2	0	10	Non-Priority Major	5 years
AD-355	40.78	Supplemental	0	0	0	0	0	0	0	0	0	0	Non-Priority Non-Major	10 years
AD-405	42.57	Minor	0	0	0	0	0	0	0	0	0	0	Non-Priority Non-Major	10 years
AD-409	14.08	Minor	0	0	0	0	0	0	0	2	0	2	Non-Priority Non-Major	10 years
AE-17	48.31	Major	0	0	0	0	0	0	15	0	0	15	Non-Priority Major	5 years
AF-116	938.52	Supplemental	0	0	0	0	0	5	0	4	0	9	Non-Priority Non-Major	10 years
AF-129	7.59	Supplemental	0	0	0	0	0	9	0	4	0	13	Non-Priority Non-Major	10 years
AF-131	4.20	Supplemental	0	0	0	0	0	0	0	8	0	8	Non-Priority Non-Major	10 years
AF-134	26.38	Supplemental	0	0	0	0	0	5	0	6	0	11	Non-Priority Non-Major	10 years
AF-135	1.42	Minor	0	0	0	0	0	8	0	0	0	8	Non-Priority Non-Major	10 years
AF-138	12.61	Supplemental	0	0	0	0	0	0	0	8	0	8	Non-Priority Non-Major	10 years
AF-140	26.38	Minor	0	0	0	0	0	5	0	6	0	11	Non-Priority Non-Major	10 years
AF-67	64.54	Supplemental	0	0	0	0	0	0	0	4	0	4	Non-Priority Non-Major	10 years
AF-70	252.78	Major	0	0	0	0	0	5	0	2	0	7	Non-Priority Major	5 years
AF-88	5.98	Supplemental	0	0	0	0	0	0	0	0	0	0	Non-Priority Non-Major	10 years
AF-91	7.61	Minor	0	0	0	0	0	0	0	0	0	0	Non-Priority Non-Major	10 years
AG-3	46.47	Supplemental	0	0	0	0	0	5	0	0	0	5	Non-Priority Non-Major	10 years
AG-40	233.12	Major	0	0	0	0	0	5	0	0	0	5	Non-Priority Major	5 years
AG-41	233.12	Major	0	0	0	0	0	5	0	0	0	5	Non-Priority Major	5 years
AH-2	19.09	Minor	0	0	0	0	0	0	0	6	2	8	Non-Priority Non-Major	10 years
AJ-13	22.53	Supplemental	0	0	0	0	0	0	0	6	4	10	Non-Priority Non-Major	10 years
AJ-15	64.03	Minor	0	0	0	0	0	0	0	6	4	10	Non-Priority Non-Major	10 years
AK-9	18.39	Supplemental	0	0	0	0	0	0	0	4	6	10	Non-Priority Non-Major	10 years
AL-3	4.59	Supplemental	0	0	0	0	0	0	0	4	6	10	Non-Priority Non-Major	10 years

City of Appleton
 2020 IDDE Ongoing Screening Program Update
 Outfall Summary Table

Outfall ID	Drainage Area (acres)	Major/Minor Classification	Prioritization Scores										Priority Status	Screening Frequency	
			5-yr History	Ongoing Issue	80% Impervious	Aging Sanitary	Aging Storm	Institutional	Industrial	Commercial	Multi-Family	Total Score			
AN-12	1.45	Supplemental	0	0	0	0	0	0	0	0	0	8	8	Non-Priority Non-Major	10 years
AN-9	4.24	Supplemental	0	0	0	0	0	0	0	0	0	0	0	Non-Priority Non-Major	10 years
AO-59	75.20	Supplemental	0	0	0	0	0	0	9	5	2	2	18	Non-Priority Non-Major	10 years
AP-19	46.69	Supplemental	10	0	0	0	0	0	0	15	4	0	29	Priority	Annual
AQ-124	195.26	Major	0	0	0	0	0	0	0	0	0	0	0	Non-Priority Major	5 years
AQ-126	8.50	Supplemental	0	0	0	0	0	0	0	0	0	0	0	Non-Priority Non-Major	10 years
AQ-127	106.17	Supplemental	0	0	0	0	0	0	0	0	0	0	0	Non-Priority Non-Major	10 years
AQ-129	0.67	Supplemental	0	0	0	0	0	0	0	0	0	0	0	Non-Priority Non-Major	10 years
AQ-130	191.68	Major	0	0	0	0	0	0	0	0	0	0	0	Non-Priority Major	5 years
AS-5	18.73	Minor	10	0	0	0	0	0	0	0	8	0	18	Non-Priority Non-Major	10 years
AT-4	9.66	Supplemental	0	0	0	0	0	0	5	0	8	0	13	Non-Priority Non-Major	10 years
AT-6	186.22	Major	0	0	0	0	0	0	0	10	6	0	16	Non-Priority Major	5 years
AU-69	108.97	Supplemental	0	0	0	0	0	0	8	0	0	2	10	Non-Priority Non-Major	10 years
AW-62	68.43	Supplemental	0	0	0	0	0	0	0	0	0	0	0	Non-Priority Non-Major	10 years
AX-44	97.49	Major	30	15	0	0	0	0	0	10	6	0	61	Priority	Annual
AX-45	6.35	Minor	20	15	0	0	0	0	0	0	8	0	43	Priority	Annual
AX-46	1.52	Supplemental	0	0	0	0	0	0	0	15	4	0	19	Non-Priority Non-Major	10 years
AX-47	0.96	Supplemental	0	0	0	0	0	0	0	20	0	0	20	Priority	Annual
AX-48	28.27	Supplemental	0	0	0	0	0	0	0	20	0	0	20	Priority	Annual
AX-49	0.90	Supplemental	0	0	0	0	0	0	0	20	0	0	20	Priority	Annual
AX-51	44.92	Supplemental	0	0	0	0	0	0	0	20	0	0	20	Priority	Annual
AX-57	8.21	Supplemental	20	0	0	0	0	0	0	20	2	0	42	Priority	Annual
AY-1	1.82	Minor	0	0	5	0	0	0	0	0	8	0	13	Non-Priority Non-Major	10 years
AZ-54	54.94	Supplemental	0	0	0	0	0	0	5	0	0	0	5	Non-Priority Non-Major	10 years
B-71	1.01	Minor	0	0	0	0	0	0	0	0	0	0	0	Non-Priority Non-Major	10 years
B-72	0.78	Supplemental	0	0	5	0	0	0	0	0	0	0	5	Non-Priority Non-Major	10 years
B-75	73.26	Major	0	0	0	2	2	5	0	0	0	0	9	Non-Priority Major	5 years
BB-226	11.30	Minor	0	0	0	4	0	0	0	0	0	0	4	Non-Priority Non-Major	10 years
BB-229	356.10	Major	30	15	0	2	2	0	0	2	0	0	51	Priority	Annual
BC-71	42.02	Supplemental	0	0	0	0	0	0	9	0	0	0	9	Non-Priority Non-Major	10 years
BC-76	1.24	Supplemental	0	0	0	0	0	0	0	0	0	0	0	Non-Priority Non-Major	10 years
BC-79	20.33	Supplemental	0	0	0	0	0	0	0	0	0	0	0	Non-Priority Non-Major	10 years
BC-80	75.97	Supplemental	0	0	0	0	0	0	9	0	2	0	11	Non-Priority Non-Major	10 years
BD-15	7.49	Supplemental	0	0	0	0	0	0	0	0	0	0	0	Non-Priority Non-Major	10 years
BE-14	15.47	Supplemental	0	0	0	0	0	0	0	0	0	8	8	Non-Priority Non-Major	10 years
BF-7	5.78	Supplemental	0	0	0	0	0	0	0	0	0	4	4	Non-Priority Non-Major	10 years

City of Appleton
 2020 IDDE Ongoing Screening Program Update
 Outfall Summary Table

Outfall ID	Drainage Area (acres)	Major/Minor Classification	Prioritization Scores										Priority Status	Screening Frequency
			5-yr History	Ongoing Issue	80% Impervious	Aging Sanitary	Aging Storm	Institutional	Industrial	Commercial	Multi-Family	Total Score		
BH-3	1.34	Supplemental	0	0	0	0	0	0	0	4	0	4	Non-Priority Non-Major	10 years
BH-5	2.99	Supplemental	0	0	0	0	0	0	0	4	0	4	Non-Priority Non-Major	10 years
BI-9	1.72	Minor	0	0	0	0	0	0	0	0	2	2	Non-Priority Non-Major	10 years
BK-55	23.17	Supplemental	0	0	0	0	0	10	0	0	0	10	Non-Priority Non-Major	10 years
BK-56	14.00	Supplemental	0	0	0	0	0	0	0	6	0	6	Non-Priority Non-Major	10 years
BK-86	36.91	Supplemental	0	0	0	0	0	0	0	0	0	0	Non-Priority Non-Major	10 years
BL-10	5.51	Supplemental	0	0	0	0	0	0	0	0	0	0	Non-Priority Non-Major	10 years
BM-64	72.92	Supplemental	0	0	0	0	0	5	0	0	0	5	Non-Priority Non-Major	10 years
BM-97	2,219.12	Major	0	0	0	0	0	5	0	2	2	9	Non-Priority Major	5 years
BN-36	98.50	Supplemental	0	0	0	0	0	0	20	0	0	20	Priority	Annual
BN-38	221.98	Major	0	0	0	0	0	0	20	0	0	20	Priority	Annual
BO-38	14.39	Supplemental	0	0	0	0	0	0	0	0	0	0	Non-Priority Non-Major	10 years
BO-46	5.78	Supplemental	0	0	0	0	0	0	0	0	0	0	Non-Priority Non-Major	10 years
BO-47	10.58	Supplemental	0	0	0	0	0	0	0	0	2	2	Non-Priority Non-Major	10 years
BO-49	39.31	Minor	0	0	0	0	0	5	0	0	2	7	Non-Priority Non-Major	10 years
BP-103	23.85	Supplemental	0	0	0	0	0	0	0	0	0	0	Non-Priority Non-Major	10 years
BP-104	24.24	Supplemental	0	0	0	0	0	0	0	0	0	0	Non-Priority Non-Major	10 years
BP-105	9.10	Supplemental	0	0	0	0	0	0	0	0	0	0	Non-Priority Non-Major	10 years
BP-110	15.85	Minor	0	0	0	0	0	0	0	0	0	0	Non-Priority Non-Major	10 years
BP-113	21.46	Minor	0	0	0	0	0	0	0	0	0	0	Non-Priority Non-Major	10 years
BP-115	29.00	Minor	0	0	0	0	0	0	0	0	0	0	Non-Priority Non-Major	10 years
BP-81	18.45	Supplemental	0	0	0	0	0	0	0	0	0	0	Non-Priority Non-Major	10 years
BP-82	0.45	Supplemental	0	0	0	0	0	0	0	0	0	0	Non-Priority Non-Major	10 years
BP-86	4.34	Supplemental	0	0	0	0	0	0	0	0	0	0	Non-Priority Non-Major	10 years
BP-88	11.63	Supplemental	0	0	0	0	0	0	0	0	0	0	Non-Priority Non-Major	10 years
BP-89	1.64	Supplemental	0	0	0	0	0	0	0	0	0	0	Non-Priority Non-Major	10 years
BP-91	43.91	Supplemental	0	0	0	0	0	0	0	0	0	0	Non-Priority Non-Major	10 years
BP-95	50.77	Major	0	0	0	0	0	0	0	0	0	0	Non-Priority Major	5 years
BP-96	1.58	Supplemental	0	0	0	0	0	0	0	0	0	0	Non-Priority Non-Major	10 years
BP-97	4.05	Supplemental	0	0	0	0	0	0	0	0	0	0	Non-Priority Non-Major	10 years
BP-98	6.35	Supplemental	0	0	0	0	0	0	0	0	0	0	Non-Priority Non-Major	10 years
BP-99	8.80	Supplemental	0	0	0	0	0	0	0	0	0	0	Non-Priority Non-Major	10 years
BQ-25	21.41	Supplemental	0	0	0	0	0	0	0	0	0	0	Non-Priority Non-Major	10 years
BQ-27	29.45	Minor	0	0	0	0	0	0	0	0	0	0	Non-Priority Non-Major	10 years
BR-26	84.76	Supplemental	0	0	0	0	0	0	5	0	0	5	Non-Priority Non-Major	10 years
BS-21	132.25	Supplemental	0	0	0	0	0	0	15	0	4	19	Non-Priority Non-Major	10 years

City of Appleton
 2020 IDDE Ongoing Screening Program Update
 Outfall Summary Table

Outfall ID	Drainage Area (acres)	Major/Minor Classification	Prioritization Scores										Priority Status	Screening Frequency
			5-yr History	Ongoing Issue	80% Impervious	Aging Sanitary	Aging Storm	Institutional	Industrial	Commercial	Multi-Family	Total Score		
BT-13	164.11	Minor	0	0	0	0	0	5	0	6	0	11	Non-Priority Non-Major	10 years
BT-20	243.98	Supplemental	0	0	0	0	0	0	10	0	2	12	Non-Priority Non-Major	10 years
BT-22	40.78	Supplemental	0	0	0	0	0	5	0	6	0	11	Non-Priority Non-Major	10 years
BT-24	248.92	Supplemental	0	0	0	0	0	0	10	0	2	12	Non-Priority Non-Major	10 years
BT-25	10.48	Supplemental	0	0	0	0	0	0	0	8	0	8	Non-Priority Non-Major	10 years
BT-26	10.51	Supplemental	10	0	0	0	0	0	0	8	0	18	Non-Priority Non-Major	10 years
BT-27	2.74	Supplemental	0	0	0	0	0	5	5	6	0	16	Non-Priority Non-Major	10 years
BT-28	297.00	Major	0	0	0	0	0	0	10	2	2	14	Non-Priority Major	5 years
BT-29	13.35	Supplemental	0	0	0	0	0	0	0	4	0	4	Non-Priority Non-Major	10 years
BU-11	54.24	Major	0	0	0	0	0	0	0	2	0	2	Non-Priority Major	5 years
BU-12	168.13	Major	0	0	0	0	0	0	0	4	2	6	Non-Priority Major	5 years
BV-117	3.98	Supplemental	0	0	0	0	0	0	0	2	0	2	Non-Priority Non-Major	10 years
BV-118	3.55	Supplemental	0	0	0	0	0	0	0	0	0	0	Non-Priority Non-Major	10 years
BV-119	23.86	Supplemental	0	0	0	0	0	0	0	0	0	0	Non-Priority Non-Major	10 years
BV-121	29.83	Supplemental	0	0	0	0	0	0	0	0	0	0	Non-Priority Non-Major	10 years
BV-123	3.49	Supplemental	0	0	0	0	0	0	0	0	0	0	Non-Priority Non-Major	10 years
BV-124	8.79	Supplemental	0	0	0	0	0	0	0	0	0	0	Non-Priority Non-Major	10 years
BV-126	13.85	Supplemental	0	0	0	0	0	0	0	0	0	0	Non-Priority Non-Major	10 years
BV-128	23.60	Minor	0	0	0	0	0	5	0	0	0	5	Non-Priority Non-Major	10 years
BV-129	5.13	Supplemental	0	0	0	0	0	0	0	0	0	0	Non-Priority Non-Major	10 years
BV-131	9.15	Minor	0	0	0	0	0	5	0	0	4	9	Non-Priority Non-Major	10 years
BV-133	5.49	Supplemental	0	0	0	0	0	0	0	0	0	0	Non-Priority Non-Major	10 years
BV-135	26.92	Minor	0	0	0	0	0	5	0	0	0	5	Non-Priority Non-Major	10 years
BV-136	18.14	Supplemental	0	0	0	0	0	0	0	0	0	0	Non-Priority Non-Major	10 years
BV-138	0.64	Supplemental	0	0	0	0	0	0	0	0	2	2	Non-Priority Non-Major	10 years
BV-139	3.00	Supplemental	0	0	0	0	0	0	0	0	0	0	Non-Priority Non-Major	10 years
BV-140	1.49	Supplemental	0	0	0	0	0	0	0	0	2	2	Non-Priority Non-Major	10 years
BV-142	14.91	Supplemental	0	0	0	0	0	0	0	0	0	0	Non-Priority Non-Major	10 years
BV-144	18.26	Minor	0	0	0	0	0	0	0	0	0	0	Non-Priority Non-Major	10 years
BV-146	2.84	Supplemental	0	0	0	0	0	0	0	2	0	2	Non-Priority Non-Major	10 years
BV-147	1.05	Supplemental	0	0	0	0	0	0	0	0	0	0	Non-Priority Non-Major	10 years
BV-149	10.86	Supplemental	0	0	0	0	0	0	0	0	0	0	Non-Priority Non-Major	10 years
BV-156	30.52	Minor	0	0	0	0	0	0	0	0	0	0	Non-Priority Non-Major	10 years
BV-159	1.48	Supplemental	0	0	0	0	0	0	0	0	0	0	Non-Priority Non-Major	10 years
BV-165	18.56	Minor	0	0	0	0	0	0	0	0	0	0	Non-Priority Non-Major	10 years
BV-166	10.43	Minor	0	0	0	0	0	0	0	0	0	0	Non-Priority Non-Major	10 years

City of Appleton
2020 IDDE Ongoing Screening Program Update
Outfall Summary Table

Outfall ID	Drainage Area (acres)	Major/Minor Classification	Prioritization Scores										Priority Status	Screening Frequency	
			5-yr History	Ongoing Issue	80% Impervious	Aging Sanitary	Aging Storm	Institutional	Industrial	Commercial	Multi-Family	Total Score			
BV-170	0.92	Supplemental	0	0	0	0	0	0	0	0	0	8	8	Non-Priority Non-Major	10 years
BW-14	5.07	Supplemental	0	0	0	0	0	0	0	0	0	0	0	Non-Priority Non-Major	10 years
BW-18	14.01	Minor	0	0	0	0	0	0	0	0	0	0	0	Non-Priority Non-Major	10 years
BW-19	0.71	Supplemental	0	0	0	0	0	0	0	0	0	0	0	Non-Priority Non-Major	10 years
BX-4	2.15	Supplemental	0	0	0	0	0	0	0	0	0	0	0	Non-Priority Non-Major	10 years
BX-7	5.04	Minor	0	0	0	0	0	0	0	0	0	0	0	Non-Priority Non-Major	10 years
BY-3	45.23	Major	0	0	5	0	0	0	10	6	0	0	21	Priority	Annual
BZ-20	51.18	Supplemental	0	0	0	0	0	0	0	0	0	0	0	Non-Priority Non-Major	10 years
BZ-23	82.66	Supplemental	0	0	0	0	0	0	0	0	0	0	0	Non-Priority Non-Major	10 years
BZ-26	186.29	Minor	0	0	0	0	0	0	0	0	0	0	0	Non-Priority Non-Major	10 years
C-19	3.61	Minor	0	0	0	0	0	5	0	0	0	0	5	Non-Priority Non-Major	10 years
C-362	17.44	Minor	0	0	0	3	0	0	0	0	0	0	3	Non-Priority Non-Major	10 years
C-553	741.67	Major	0	0	0	2	4	5	5	2	0	0	18	Non-Priority Major	5 years
CB-21	35.82	Supplemental	0	0	0	0	0	0	0	0	0	0	0	Non-Priority Non-Major	10 years
CC-116	396.81	Major	0	0	0	0	0	5	0	0	0	0	5	Non-Priority Major	5 years
CC-96	14.62	Supplemental	0	0	0	0	0	0	0	0	0	0	0	Non-Priority Non-Major	10 years
CC-97	365.25	Supplemental	40	15	0	1	0	5	0	0	0	0	61	Priority	Annual
CD-10	0.47	Supplemental	0	0	0	0	0	0	0	0	0	0	0	Non-Priority Non-Major	10 years
CD-6	14.71	Supplemental	0	0	0	0	0	0	0	0	0	0	0	Non-Priority Non-Major	10 years
CD-8	14.91	Supplemental	0	0	0	0	0	0	0	0	0	0	0	Non-Priority Non-Major	10 years
CE-27	17.95	Minor	0	0	0	0	0	8	5	2	4	0	19	Non-Priority Non-Major	10 years
CF-8	9.68	Supplemental	0	0	0	0	0	0	0	0	2	0	2	Non-Priority Non-Major	10 years
CH-2	24.33	Minor	0	0	0	0	0	0	0	0	0	0	0	Non-Priority Non-Major	10 years
CH-3	21.84	Supplemental	0	0	0	0	0	0	0	0	0	0	0	Non-Priority Non-Major	10 years
CI-31	19.85	Minor	0	0	0	0	0	0	0	0	0	0	0	Non-Priority Non-Major	10 years
CI-32	18.94	Supplemental	0	0	0	0	0	0	0	0	0	0	0	Non-Priority Non-Major	10 years
CI-41	10.21	Supplemental	0	0	0	0	0	0	0	0	0	0	0	Non-Priority Non-Major	10 years
CI-54	11.38	Minor	0	0	0	0	0	0	0	0	0	0	0	Non-Priority Non-Major	10 years
DD-175	2.94	Minor	30	0	0	4	0	0	0	0	0	0	34	Priority	Annual
E-58	1.59	Minor	0	0	0	0	0	0	5	6	2	0	13	Non-Priority Non-Major	10 years
E-60	44.32	Minor	40	0	0	1	2	8	0	6	0	0	57	Priority	Annual
EE-195	236.15	Major	0	0	0	3	4	5	5	2	0	0	19	Non-Priority Major	5 years
F-43	310.64	Major	0	0	0	2	2	5	0	4	0	0	13	Non-Priority Major	5 years
FF-108	228.30	Major	0	0	0	4	0	0	0	2	0	0	6	Non-Priority Major	5 years
FF-115	3.46	Supplemental	0	0	0	5	0	0	0	0	0	0	5	Non-Priority Non-Major	10 years
GG-68	50.16	Minor	0	0	0	1	0	9	5	0	0	0	15	Non-Priority Non-Major	10 years

City of Appleton
 2020 IDDE Ongoing Screening Program Update
 Outfall Summary Table

Outfall ID	Drainage Area (acres)	Major/Minor Classification	Prioritization Scores										Priority Status	Screening Frequency
			5-yr History	Ongoing Issue	80% Impervious	Aging Sanitary	Aging Storm	Institutional	Industrial	Commercial	Multi-Family	Total Score		
GG-69	12.13	Minor	0	0	0	4	4	0	0	0	0	8	Non-Priority Non-Major	10 years
GG-71	1.70	Minor	0	0	0	4	0	5	0	0	0	9	Non-Priority Non-Major	10 years
GG-73	1.62	Minor	0	0	0	5	0	5	0	0	0	10	Non-Priority Non-Major	10 years
GG-75	4.11	Minor	0	0	0	0	0	5	0	0	0	5	Non-Priority Non-Major	10 years
GG-76	34.29	Minor	0	0	0	3	0	5	0	0	0	8	Non-Priority Non-Major	10 years
GG-77	7.52	Minor	0	0	0	4	0	0	0	0	0	4	Non-Priority Non-Major	10 years
H-60	42.28	Minor	0	0	0	1	0	9	0	2	0	12	Non-Priority Non-Major	10 years
HH-100	9.78	Major	10	0	0	0	0	0	20	0	0	30	Priority	Annual
HH-120	0.19	Minor	0	0	5	0	0	0	15	0	0	20	Priority	Annual
HH-82	3.75	Supplemental	0	0	0	0	0	0	20	0	0	20	Priority	Annual
HH-97	304.61	Major	20	0	0	0	0	0	15	0	0	35	Priority	Annual
I-34	1.32	Minor	0	0	0	0	0	5	0	4	0	9	Non-Priority Non-Major	10 years
I-36	35.79	Minor	0	0	0	3	0	8	0	0	0	11	Non-Priority Non-Major	10 years
IDDE-100	165.36	Major	0	0	0	0	0	0	0	0	0	0	Non-Priority Major	5 years
IDDE-101	94.87	Major	0	0	0	0	0	0	0	0	0	0	Non-Priority Major	5 years
IDDE-102	2,091.03	Major	0	0	0	0	0	5	5	2	0	12	Non-Priority Major	5 years
IDDE-103	149.19	Supplemental	0	0	0	0	0	8	0	2	0	10	Non-Priority Non-Major	10 years
IDDE-104	37.46	Supplemental	0	0	0	0	0	0	0	2	0	2	Non-Priority Non-Major	10 years
IDDE-105	875.32	Minor	0	0	0	0	0	5	0	0	2	7	Non-Priority Non-Major	10 years
II-48	74.36	Major	0	0	0	0	0	0	5	0	2	7	Non-Priority Major	5 years
J-140	9.19	Minor	0	0	0	0	0	0	0	0	0	0	Non-Priority Non-Major	10 years
J-141	336.64	Major	0	0	0	0	0	0	5	2	2	9	Non-Priority Major	5 years
J-144	0.30	Supplemental	0	0	5	0	0	0	0	2	0	7	Non-Priority Non-Major	10 years
J-146	0.43	Supplemental	0	0	0	0	0	0	0	2	0	2	Non-Priority Non-Major	10 years
J-151	0.50	Supplemental	0	0	0	0	0	0	0	2	0	2	Non-Priority Non-Major	10 years
JJ-43	62.13	Major	0	0	0	0	0	0	0	4	0	4	Non-Priority Major	5 years
K-18	28.16	Minor	0	0	0	0	0	0	0	2	0	2	Non-Priority Non-Major	10 years
KK-19x	26.85	Major	0	0	0	2	0	0	10	6	0	18	Non-Priority Major	5 years
KK-21	3.36	Major	0	0	5	0	0	0	20	0	0	25	Priority	Annual
KK-61	1.14	Minor	0	0	5	0	0	0	15	0	4	24	Priority	Annual
KK-62	0.66	Minor	0	0	5	0	0	0	5	0	8	18	Non-Priority Non-Major	10 years
KK-65	10.68	Minor	0	0	0	0	0	0	0	0	6	6	Non-Priority Non-Major	10 years
KK-66	18.52	Minor	0	0	0	1	0	0	0	4	2	7	Non-Priority Non-Major	10 years
KK-67	1.25	Minor	0	0	5	0	0	0	5	0	8	18	Non-Priority Non-Major	10 years
KK-68	1.82	Minor	0	0	0	0	0	0	20	0	0	20	Priority	Annual
KK-78	1.14	Minor	10	0	0	5	0	0	20	0	0	35	Priority	Annual

City of Appleton
 2020 IDDE Ongoing Screening Program Update
 Outfall Summary Table

Outfall ID	Drainage Area (acres)	Major/Minor Classification	Prioritization Scores										Priority Status	Screening Frequency
			5-yr History	Ongoing Issue	80% Impervious	Aging Sanitary	Aging Storm	Institutional	Industrial	Commercial	Multi-Family	Total Score		
L-32	135.92	Major	0	0	0	3	4	5	0	0	0	12	Non-Priority Major	5 years
L-78	111.55	Supplemental	0	0	0	3	4	5	0	0	0	12	Non-Priority Non-Major	10 years
L-80	5.19	Minor	0	0	0	2	0	0	0	2	0	4	Non-Priority Non-Major	10 years
L-83	4.32	Minor	0	0	0	0	0	8	0	2	0	10	Non-Priority Non-Major	10 years
L-96	0.12	Minor	0	0	5	3	0	0	0	8	0	16	Non-Priority Non-Major	10 years
LL-24	17.81	Minor	0	0	0	0	0	5	0	6	2	13	Non-Priority Non-Major	10 years
LL-25	2.68	Minor	0	0	0	0	0	0	0	4	0	4	Non-Priority Non-Major	10 years
M-10	8.24	Minor	0	0	0	3	0	5	0	0	0	8	Non-Priority Non-Major	10 years
MM-33	60.61	Minor	0	0	0	4	0	8	0	2	0	14	Non-Priority Non-Major	10 years
N-315	1.81	Supplemental	0	0	5	0	0	5	15	4	2	31	Priority	Annual
N-316	0.34	Supplemental	0	0	5	0	0	5	0	0	6	16	Non-Priority Non-Major	10 years
N-317	0.54	Minor	0	0	5	0	0	0	5	8	0	18	Non-Priority Non-Major	10 years
N-318	4.76	Minor	0	0	0	1	0	5	5	2	6	19	Non-Priority Non-Major	10 years
N-319	697.58	Major	0	0	0	2	0	8	0	0	0	10	Non-Priority Major	5 years
N-331	9.41	Supplemental	0	0	0	1	0	8	0	0	6	15	Non-Priority Non-Major	10 years
N-332	1.19	Supplemental	0	0	0	0	0	9	0	0	0	9	Non-Priority Non-Major	10 years
N-353	3.42	Supplemental	0	0	0	3	0	5	0	0	2	10	Non-Priority Non-Major	10 years
N-354	2.48	Supplemental	0	0	0	0	0	8	0	0	0	8	Non-Priority Non-Major	10 years
N-362	13.30	Supplemental	0	0	0	0	0	0	0	0	0	0	Non-Priority Non-Major	10 years
N-363	515.53	Supplemental	0	0	0	2	0	8	0	0	0	10	Non-Priority Non-Major	10 years
N-367	73.87	Supplemental	0	0	0	3	0	5	0	0	0	8	Non-Priority Non-Major	10 years
N-369	350.32	Supplemental	0	0	0	1	0	5	0	0	2	8	Non-Priority Non-Major	10 years
N-388	155.31	Supplemental	0	0	0	1	0	5	0	0	0	6	Non-Priority Non-Major	10 years
N-390	49.44	Supplemental	0	0	0	0	0	8	0	0	0	8	Non-Priority Non-Major	10 years
N-399	137.52	Supplemental	0	0	0	1	0	0	0	0	2	3	Non-Priority Non-Major	10 years
N-400	8.06	Supplemental	0	0	0	5	0	0	0	0	0	5	Non-Priority Non-Major	10 years
NN-29	527.13	Major	0	0	0	3	6	5	5	2	0	21	Priority	Annual
OO-34	51.67	Minor	0	0	0	4	4	0	0	0	0	8	Non-Priority Non-Major	10 years
P-188	8.02	Minor	0	0	0	0	0	0	5	2	4	11	Non-Priority Non-Major	10 years
P-192	64.18	Major	0	0	0	0	0	5	0	0	0	5	Non-Priority Major	5 years
P-222	182.87	Supplemental	0	0	0	0	0	0	0	0	0	0	Non-Priority Non-Major	10 years
P-231	9.89	Minor	0	0	0	0	0	0	0	4	2	6	Non-Priority Non-Major	10 years
P-241	15.30	Minor	0	0	0	0	0	0	0	0	2	2	Non-Priority Non-Major	10 years
P-245	0.10	Minor	0	0	5	0	0	0	0	0	8	13	Non-Priority Non-Major	10 years
P-247	15.66	Minor	0	0	0	0	0	0	0	4	0	4	Non-Priority Non-Major	10 years
PP-22	5.92	Supplemental	0	0	0	0	0	0	20	0	0	20	Priority	Annual

City of Appleton
 2020 IDDE Ongoing Screening Program Update
 Outfall Summary Table

Outfall ID	Drainage Area (acres)	Major/Minor Classification	Prioritization Scores										Priority Status	Screening Frequency
			5-yr History	Ongoing Issue	80% Impervious	Aging Sanitary	Aging Storm	Institutional	Industrial	Commercial	Multi-Family	Total Score		
PP-27	136.53	Supplemental	20	15	0	0	0	0	20	0	0	55	Priority	Annual
PP-32	164.28	Supplemental	10	0	0	0	0	0	20	0	0	30	Priority	Annual
QQ-51	0.83	Supplemental	0	0	0	0	0	0	20	0	0	20	Priority	Annual
QQ-52	0.83	Supplemental	0	0	0	0	0	0	20	0	0	20	Priority	Annual
QQ-58	100.03	Supplemental	0	0	0	0	0	0	20	0	0	20	Priority	Annual
QQ-59	100.03	Supplemental	40	15	0	0	0	0	20	0	0	75	Priority	Annual
QQ-60	106.64	Major	10	15	0	0	0	0	20	0	0	45	Priority	Annual
RR-25	2.08	Supplemental	0	0	0	0	0	0	20	0	0	20	Priority	Annual
RR-26	3.89	Supplemental	0	0	0	0	0	0	20	0	0	20	Priority	Annual
RR-29	100.92	Supplemental	20	0	0	0	0	0	10	6	0	36	Priority	Annual
RR-35	0.86	Supplemental	0	0	0	0	0	0	20	0	0	20	Priority	Annual
RR-38	0.67	Supplemental	0	0	0	0	0	0	20	0	0	20	Priority	Annual
RR-39	2.30	Supplemental	0	0	0	0	0	0	20	0	0	20	Priority	Annual
SS-30	67.30	Supplemental	0	0	0	0	0	0	20	2	2	24	Priority	Annual
SS-32	4.56	Supplemental	0	0	0	0	0	0	0	8	0	8	Non-Priority Non-Major	10 years
SS-33	3.39	Supplemental	10	0	0	0	0	0	0	8	0	18	Non-Priority Non-Major	10 years
SS-34	0.93	Supplemental	0	0	0	0	0	0	0	6	0	6	Non-Priority Non-Major	10 years
SS-35	3.56	Supplemental	0	0	0	0	0	0	0	8	0	8	Non-Priority Non-Major	10 years
SS-36	2.73	Supplemental	10	0	0	0	0	0	0	8	0	18	Non-Priority Non-Major	10 years
SS-39	4.28	Supplemental	0	0	0	0	0	0	15	4	0	19	Non-Priority Non-Major	10 years
SS-43	2.56	Supplemental	0	0	0	0	0	0	20	0	0	20	Priority	Annual
TT-28	128.63	Major	20	0	0	0	0	0	0	4	4	28	Priority	Annual
U-20	251.93	Supplemental	50	15	0	0	0	0	0	2	2	69	Priority	Annual
UU-25	32.12	Minor	0	0	0	0	0	0	0	0	0	0	Non-Priority Non-Major	10 years
V-136	37.21	Minor	10	0	0	0	0	0	0	4	2	16	Non-Priority Non-Major	10 years
V-335	103.06	Supplemental	0	0	0	0	0	8	0	4	2	14	Non-Priority Non-Major	10 years
V-336	34.07	Supplemental	0	0	0	0	0	5	0	0	0	5	Non-Priority Non-Major	10 years
V-339	13.52	Supplemental	0	0	0	0	0	0	0	0	0	0	Non-Priority Non-Major	10 years
V-342	617.36	Supplemental	0	0	0	1	0	5	0	2	0	8	Non-Priority Non-Major	10 years
V-344	13.69	Supplemental	0	0	0	0	0	10	0	0	0	10	Non-Priority Non-Major	10 years
V-355	624.07	Supplemental	0	0	0	1	0	5	0	2	0	8	Non-Priority Non-Major	10 years
V-382	11.10	Supplemental	0	0	0	0	0	5	0	0	0	5	Non-Priority Non-Major	10 years
V-397	225.10	Supplemental	0	0	0	0	0	5	0	0	2	7	Non-Priority Non-Major	10 years
V-400	38.36	Supplemental	0	0	0	0	0	0	0	2	4	6	Non-Priority Non-Major	10 years
V-401	207.05	Supplemental	0	0	0	0	0	0	0	0	0	0	Non-Priority Non-Major	10 years
V-404	8.65	Supplemental	0	0	0	0	0	10	0	0	0	10	Non-Priority Non-Major	10 years

City of Appleton
 2020 IDDE Ongoing Screening Program Update
 Outfall Summary Table

Outfall ID	Drainage Area (acres)	Major/Minor Classification	Prioritization Scores										Priority Status	Screening Frequency
			5-yr History	Ongoing Issue	80% Impervious	Aging Sanitary	Aging Storm	Institutional	Industrial	Commercial	Multi-Family	Total Score		
V-405	15.17	Supplemental	0	0	0	0	0	10	0	0	0	10	Non-Priority Non-Major	10 years
V-412	0.72	Supplemental	0	0	0	0	0	0	0	0	0	0	Non-Priority Non-Major	10 years
V-413	0.60	Supplemental	0	0	0	0	0	0	0	0	0	0	Non-Priority Non-Major	10 years
V-414	4.72	Supplemental	0	0	0	0	0	0	0	0	0	0	Non-Priority Non-Major	10 years
V-415	1.94	Supplemental	0	0	0	0	0	0	0	0	0	0	Non-Priority Non-Major	10 years
V-430	5.23	Supplemental	0	0	0	0	0	10	0	0	0	10	Non-Priority Non-Major	10 years
V-431	0.76	Supplemental	0	0	0	0	0	0	0	0	0	0	Non-Priority Non-Major	10 years
V-432	0.16	Supplemental	0	0	0	0	0	0	0	0	0	0	Non-Priority Non-Major	10 years
VV-62	43.58	Minor	0	0	0	0	0	0	0	0	0	0	Non-Priority Non-Major	10 years
VV-74	40.10	Minor	0	0	0	0	0	0	0	2	0	2	Non-Priority Non-Major	10 years
W-260	319.26	Major	10	0	0	3	0	5	10	0	0	28	Priority	Annual
WW-4	13.24	Minor	0	0	0	0	0	10	0	0	0	10	Non-Priority Non-Major	10 years
X-560	21.61	Minor	0	0	0	0	0	0	0	0	0	0	Non-Priority Non-Major	10 years
X-562	11.59	Supplemental	0	0	0	0	0	0	0	0	0	0	Non-Priority Non-Major	10 years
X-564	49.15	Supplemental	0	0	0	0	0	5	0	0	0	5	Non-Priority Non-Major	10 years
X-565	14.96	Supplemental	0	0	0	0	0	0	0	0	0	0	Non-Priority Non-Major	10 years
X-566	0.49	Supplemental	0	0	0	0	0	0	0	0	0	0	Non-Priority Non-Major	10 years
X-567	1.79	Supplemental	0	0	0	0	0	0	0	0	0	0	Non-Priority Non-Major	10 years
X-574	2.24	Minor	0	0	5	0	0	0	0	8	0	13	Non-Priority Non-Major	10 years
X-575	3.86	Supplemental	0	0	0	0	0	0	0	0	0	0	Non-Priority Non-Major	10 years
X-576	801.95	Supplemental	0	0	0	0	0	5	0	0	2	7	Non-Priority Non-Major	10 years
X-627	77.21	Supplemental	0	0	0	0	0	0	0	0	6	6	Non-Priority Non-Major	10 years
X-628	6.68	Minor	0	0	0	0	0	0	0	0	0	0	Non-Priority Non-Major	10 years
X-630	1.71	Supplemental	0	0	0	0	0	0	0	0	0	0	Non-Priority Non-Major	10 years
X-632	7.83	Supplemental	0	0	0	0	0	0	0	0	0	0	Non-Priority Non-Major	10 years
X-633	18.54	Supplemental	0	0	0	0	0	0	0	0	0	0	Non-Priority Non-Major	10 years
X-634	10.23	Supplemental	0	0	0	0	0	0	0	0	2	2	Non-Priority Non-Major	10 years
X-657	23.46	Minor	0	0	0	0	0	5	0	0	2	7	Non-Priority Non-Major	10 years
X-658	143.89	Supplemental	0	0	0	0	0	5	0	6	0	11	Non-Priority Non-Major	10 years
XX-10	15.17	Supplemental	0	0	0	0	0	0	0	0	0	0	Non-Priority Non-Major	10 years
XX-6	14.74	Supplemental	0	0	0	0	0	0	0	0	0	0	Non-Priority Non-Major	10 years
Y-252	7.64	Supplemental	0	0	0	0	0	10	0	0	0	10	Non-Priority Non-Major	10 years
Y-336	503.18	Supplemental	10	0	0	3	6	5	5	2	0	31	Priority	Annual
Y-96	7.16	Supplemental	0	0	0	0	0	10	0	0	0	10	Non-Priority Non-Major	10 years
Z-129	290.43	Major	10	0	0	2	0	5	5	2	0	24	Priority	Annual
Z-173	178.06	Supplemental	0	0	0	2	0	5	5	0	0	12	Non-Priority Non-Major	10 years

Appendix C

Outfall Summary Table

City of Appleton Ongoing Screening Program
 Outfall Screening Schedule, by Outfall ID

Outfall ID	Class	Last Screened	2021	2022	2023	2024	2025	2026	2027	2028	2029	2030
A-21A	NPNM		X									
AA-1	P	2020	X	X	X	X	X	X	X	X	X	X
AB-51	P	2020	X	X	X	X	X	X	X	X	X	X
AC-12	P	2020	X	X	X	X	X	X	X	X	X	X
AC-13	NPNM	2010		X								
AD-312	NPNM	2010						X				
AD-323	NPNM	2010						X				
AD-332	NPNM	2010						X				
AD-336	NPNM	2010						X				
AD-338	NPNM	2010						X				
AD-341	NPNM	2010						X				
AD-342	NPNM	2010						X				
AD-345	NPM	2011	X					X				
AD-355	NPNM	2010						X				
AD-405	NPNM	2010						X				
AD-409	NPNM	2010						X				
AE-17	NPM	2020			X					X		
AF-116	NPNM	2019									X	
AF-129	NPNM		X									
AF-131	NPNM		X									
AF-134	NPNM		X									
AF-135	NPNM		X									
AF-138	NPNM		X									
AF-140	NPNM		X									
AF-67	NPNM	2019									X	
AF-70	NPM		X					X				
AF-88	NPNM	2019									X	
AF-91	NPNM	2019									X	
AG-3	NPNM	2018		X								
AG-40	NPM	2018		X					X			
AG-41	NPM	2018		X					X			
AH-2	NPNM	2020			X							
AJ-13	NPNM	2015			X							
AJ-15	NPNM	2017			X							
AK-9	NPNM	2016			X							
AL-3	NPNM	2016			X							
AN-12	NPNM	2019									X	
AN-9	NPNM	2019									X	
AO-59	NPNM	2019										X
AP-19	P	2020	X	X	X	X	X	X	X	X	X	X
AQ-124	NPM	2016	X					X				
AQ-126	NPNM	2012						X				
AQ-127	NPNM	2012						X				
AQ-129	NPNM	2012						X				
AQ-130	NPM	2016	X					X				
AS-5	NPNM	2020									X	
AT-4	NPNM	2019										X

City of Appleton Ongoing Screening Program
 Outfall Screening Schedule, by Outfall ID

Outfall ID	Class	Last Screened	2021	2022	2023	2024	2025	2026	2027	2028	2029	2030
AT-6	NPM	2019					X					X
AU-69	NPNM	2019										X
AW-62	NPNM	2012						X				
AX-44	P	2020	X	X	X	X	X	X	X	X	X	X
AX-45	P	2020	X	X	X	X	X	X	X	X	X	X
AX-46	NPNM	2017							X			
AX-47	P	2017	X	X	X	X	X	X	X	X	X	X
AX-48	P	2020	X	X	X	X	X	X	X	X	X	X
AX-49	P	2017	X	X	X	X	X	X	X	X	X	X
AX-51	P	2018	X	X	X	X	X	X	X	X	X	X
AX-57	P	2020	X	X	X	X	X	X	X	X	X	X
AY-1	NPNM	2018							X			
AZ-54	NPNM	2020										X
B-71	NPNM		X									
B-72	NPNM		X									
B-75	NPM	2019				X					X	
BB-226	NPNM	2015			X							
BB-229	P	2020	X	X	X	X	X	X	X	X	X	X
BC-71	NPNM	2020										X
BC-76	NPNM	2020										X
BC-79	NPNM	2020										X
BC-80	NPNM	2020										X
BD-15	NPNM	2020										X
BE-14	NPNM	2019										X
BF-7	NPNM	2019										X
BH-3	NPNM	2010						X				
BH-5	NPNM	2010						X				
BI-9	NPNM		X									
BK-55	NPNM	2020										X
BK-56	NPNM	2020										X
BK-86	NPNM	2020										X
BL-10	NPNM	2020										X
BM-64	NPNM	2020										X
BM-97	NPM	2020					X					X
BN-36	P	2018	X	X	X	X	X	X	X	X	X	X
BN-38	P	2018	X	X	X	X	X	X	X	X	X	X
BO-38	NPNM	2012						X				
BO-46	NPNM	2012						X				
BO-47	NPNM	2012						X				
BO-49	NPNM	2012						X				
BP-103	NPNM	2013						X				
BP-104	NPNM	2013						X				
BP-105	NPNM	2013						X				
BP-110	NPNM	2013								X		
BP-113	NPNM	2013								X		
BP-115	NPNM	2013								X		
BP-81	NPNM	2013								X		

City of Appleton Ongoing Screening Program

Outfall Screening Schedule, by Outfall ID

Outfall ID	Class	Last Screened	2021	2022	2023	2024	2025	2026	2027	2028	2029	2030
BP-82	NPNM	2013								X		
BP-86	NPNM	2013								X		
BP-88	NPNM	2013								X		
BP-89	NPNM	2013						X				
BP-91	NPNM	2013						X				
BP-95	NPM	2018	X					X				
BP-96	NPNM	2013								X		
BP-97	NPNM	2013								X		
BP-98	NPNM	2013								X		
BP-99	NPNM	2013								X		
BQ-25	NPNM	2013									X	
BQ-27	NPNM	2013									X	
BR-26	NPNM	2017							X			
BS-21	NPNM	2017							X			
BT-13	NPNM	2017							X			
BT-20	NPNM	2017							X			
BT-22	NPNM	2017							X			
BT-24	NPNM	2017							X			
BT-25	NPNM	2017							X			
BT-26	NPNM	2017							X			
BT-27	NPNM	2017							X			
BT-28	NPM	2017		X					X			
BT-29	NPNM	2017							X			
BU-11	NPM	2020			X					X		
BU-12	NPM	2020			X					X		
BV-117	NPNM	2020										X
BV-118	NPNM	2013								X		
BV-119	NPNM	2013								X		
BV-121	NPNM	2013								X		
BV-123	NPNM	2013								X		
BV-124	NPNM	2013								X		
BV-126	NPNM	2013									X	
BV-128	NPNM	2013									X	
BV-129	NPNM	2013									X	
BV-131	NPNM	2013									X	
BV-133	NPNM	2013									X	
BV-135	NPNM	2013									X	
BV-136	NPNM	2013									X	
BV-138	NPNM	2013									X	
BV-139	NPNM	2013									X	
BV-140	NPNM	2013									X	
BV-142	NPNM	2013									X	
BV-144	NPNM	2013									X	
BV-146	NPNM	2020										X
BV-147	NPNM	2020										X
BV-149	NPNM	2020										X
BV-156	NPNM	2013								X		

City of Appleton Ongoing Screening Program
 Outfall Screening Schedule, by Outfall ID

Outfall ID	Class	Last Screened	2021	2022	2023	2024	2025	2026	2027	2028	2029	2030
BV-159	NPNM	2013								X		
BV-165	NPNM	2013								X		
BV-166	NPNM	2013								X		
BV-170	NPNM			X								
BW-14	NPNM	2013								X		
BW-18	NPNM	2013								X		
BW-19	NPNM	2013								X		
BX-4	NPNM	2013								X		
BX-7	NPNM	2013								X		
BY-3	P	2020	X	X	X	X	X	X	X	X	X	X
BZ-20	NPNM	2019									X	
BZ-23	NPNM	2019									X	
BZ-26	NPNM	2019									X	
C-19	NPNM	2020				X						
C-362	NPNM		X									
C-553	NPM	2019				X					X	
CB-21	NPNM	2016									X	
CC-116	NPM	2020					X					X
CC-96	NPNM	2014							X			
CC-97	P	2020	X	X	X	X	X	X	X	X	X	X
CD-10	NPNM		X									
CD-6	NPNM	2018		X								
CD-8	NPNM		X									
CE-27	NPNM		X									
CF-8	NPNM		X									
CH-2	NPNM				X							
CH-3	NPNM				X							
CI-31	NPNM					X						
CI-32	NPNM					X						
CI-41	NPNM					X						
CI-54	NPNM					X						
DD-175	P	2020	X	X	X	X	X	X	X	X	X	X
E-58	NPNM	2020				X						
E-60	P	2020	X	X	X	X	X	X	X	X	X	X
EE-195	NPM	2020			X					X		
F-43	NPM	2020				X					X	
FF-108	NPM	2020			X					X		
FF-115	NPNM	2015			X							
GG-68	NPNM	2015			X							
GG-69	NPNM	2015			X							
GG-71	NPNM	2015			X							
GG-73	NPNM	2015			X							
GG-75	NPNM	2015			X							
GG-76	NPNM	2015			X							
GG-77	NPNM	2015			X							
H-60	NPNM	2015				X						
HH-100	P	2020	X	X	X	X	X	X	X	X	X	X

City of Appleton Ongoing Screening Program
 Outfall Screening Schedule, by Outfall ID

Outfall ID	Class	Last Screened	2021	2022	2023	2024	2025	2026	2027	2028	2029	2030
HH-120	P		X	X	X	X	X	X	X	X	X	X
HH-82	P		X	X	X	X	X	X	X	X	X	X
HH-97	P	2020	X	X	X	X	X	X	X	X	X	X
I-34	NPNM			X								
I-36	NPNM			X								
IDDE-100	NPM	2018		X					X			
IDDE-101	NPM	2018		X					X			
IDDE-102	NPM	2019					X					X
IDDE-103	NPNM	2020										X
IDDE-104	NPNM	2020										X
IDDE-105	NPNM	2017							X			
II-48	NPM	2020			X					X		
J-140	NPNM	2014							X			
J-141	NPM	2020					X					X
J-144	NPNM			X								
J-146	NPNM			X								
J-151	NPNM			X								
JJ-43	NPM	2016	X					X				
K-18	NPNM	2014							X			
KK-19x	NPM	2020				X					X	
KK-21	P	2020	X	X	X	X	X	X	X	X	X	X
KK-61	P	2020	X	X	X	X	X	X	X	X	X	X
KK-62	NPNM	2015				X						
KK-65	NPNM	2015				X						
KK-66	NPNM	2020				X						
KK-67	NPNM		X									
KK-68	P	2020	X	X	X	X	X	X	X	X	X	X
KK-78	P	2020	X	X	X	X	X	X	X	X	X	X
L-32	NPM	2019				X					X	
L-78	NPNM	2014				X						
L-80	NPNM	2014				X						
L-83	NPNM	2014				X						
L-96	NPNM		X									
LL-24	NPNM	2010				X						
LL-25	NPNM	2010				X						
M-10	NPNM	2015				X						
MM-33	NPNM	2014				X						
N-315	P		X	X	X	X	X	X	X	X	X	X
N-316	NPNM		X									
N-317	NPNM	2014				X						
N-318	NPNM	2014				X						
N-319	NPM	2020				X					X	
N-331	NPNM	2014				X						
N-332	NPNM		X									
N-353	NPNM		X									
N-354	NPNM		X									
N-362	NPNM	2014				X						

City of Appleton Ongoing Screening Program
 Outfall Screening Schedule, by Outfall ID

Outfall ID	Class	Last Screened	2021	2022	2023	2024	2025	2026	2027	2028	2029	2030
N-363	NPNM	2020				X						
N-367	NPNM	2014				X						
N-369	NPNM	2014		X								
N-388	NPNM			X								
N-390	NPNM	2020		X								
N-399	NPNM			X								
N-400	NPNM			X								
NN-29	P	2019	X	X	X	X	X	X	X	X	X	X
OO-34	NPNM	2014				X						
P-188	NPNM			X								
P-192	NPM	2018		X					X			
P-222	NPNM	2018		X								
P-231	NPNM			X								
P-241	NPNM			X								
P-245	NPNM			X								
P-247	NPNM			X								
PP-22	P	2019	X	X	X	X	X	X	X	X	X	X
PP-27	P	2020	X	X	X	X	X	X	X	X	X	X
PP-32	P	2020	X	X	X	X	X	X	X	X	X	X
QQ-51	P	2012	X	X	X	X	X	X	X	X	X	X
QQ-52	P	2014	X	X	X	X	X	X	X	X	X	X
QQ-58	P	2020	X	X	X	X	X	X	X	X	X	X
QQ-59	P	2020	X	X	X	X	X	X	X	X	X	X
QQ-60	P	2020	X	X	X	X	X	X	X	X	X	X
RR-25	P	2019	X	X	X	X	X	X	X	X	X	X
RR-26	P	2020	X	X	X	X	X	X	X	X	X	X
RR-29	P	2020	X	X	X	X	X	X	X	X	X	X
RR-35	P	2019	X	X	X	X	X	X	X	X	X	X
RR-38	P	2019	X	X	X	X	X	X	X	X	X	X
RR-39	P	2019	X	X	X	X	X	X	X	X	X	X
SS-30	P	2019	X	X	X	X	X	X	X	X	X	X
SS-32	NPNM	2020					X					
SS-33	NPNM	2020					X					
SS-34	NPNM	2019					X					
SS-35	NPNM	2020					X					
SS-36	NPNM	2020					X					
SS-39	NPNM	2020					X					
SS-43	P	2019	X	X	X	X	X	X	X	X	X	X
TT-28	P	2020	X	X	X	X	X	X	X	X	X	X
U-20	P	2020	X	X	X	X	X	X	X	X	X	X
UU-25	NPNM	2018			X							
V-136	NPNM	2020		X								
V-335	NPNM	2016					X					
V-336	NPNM	2016					X					
V-339	NPNM	2016					X					
V-342	NPNM	2016					X					
V-344	NPNM	2016					X					

City of Appleton Ongoing Screening Program
 Outfall Screening Schedule, by Outfall ID

Outfall ID	Class	Last Screened	2021	2022	2023	2024	2025	2026	2027	2028	2029	2030
V-355	NPNM	2016					X					
V-382	NPNM	2016					X					
V-397	NPNM	2016					X					
V-400	NPNM	2016					X					
V-401	NPNM	2016					X					
V-404	NPNM	2016					X					
V-405	NPNM	2016					X					
V-412	NPNM	2016					X					
V-413	NPNM	2016					X					
V-414	NPNM	2016					X					
V-415	NPNM	2016					X					
V-430	NPNM	2016					X					
V-431	NPNM	2016					X					
V-432	NPNM	2016					X					
VV-62	NPNM	2018			X							
VV-74	NPNM			X								
W-260	P	2020	X	X	X	X	X	X	X	X	X	X
WW-4	NPNM	2014				X						
X-560	NPNM	2018			X							
X-562	NPNM	2017							X			
X-564	NPNM	2017							X			
X-565	NPNM	2017							X			
X-566	NPNM	2017							X			
X-567	NPNM	2017							X			
X-574	NPNM	2017							X			
X-575	NPNM	2017							X			
X-576	NPNM	2017							X			
X-627	NPNM		X									
X-628	NPNM			X								
X-630	NPNM	2018			X							
X-632	NPNM	2018			X							
X-633	NPNM	2018			X							
X-634	NPNM	2018			X							
X-657	NPNM	2018			X							
X-658	NPNM	2017							X			
XX-10	NPNM		X									
XX-6	NPNM	2018		X								
Y-252	NPNM		X									
Y-336	P	2020	X	X	X	X	X	X	X	X	X	X
Y-96	NPNM		X									
Z-129	P	2020	X	X	X	X	X	X	X	X	X	X
Z-173	NPNM			X								
Totals			80	80	79	80	79	80	80	80	80	76

P Priority Outfall
 NPM Non-Priority Major Outfall
 NPNM Non-Priority Non-Major Outfall

City of Appleton Ongoing Screening Program
 Outfall Screening Schedule, by Year

Outfall ID	Class	Last Screened	2021	2022	2023	2024	2025	2026	2027	2028	2029	2030
Priority Outfalls (annual)												
AA-1	P	2020	X	X	X	X	X	X	X	X	X	X
AB-51	P	2020	X	X	X	X	X	X	X	X	X	X
AC-12	P	2020	X	X	X	X	X	X	X	X	X	X
AP-19	P	2020	X	X	X	X	X	X	X	X	X	X
AX-44	P	2020	X	X	X	X	X	X	X	X	X	X
AX-45	P	2020	X	X	X	X	X	X	X	X	X	X
AX-47	P	2017	X	X	X	X	X	X	X	X	X	X
AX-48	P	2020	X	X	X	X	X	X	X	X	X	X
AX-49	P	2017	X	X	X	X	X	X	X	X	X	X
AX-51	P	2018	X	X	X	X	X	X	X	X	X	X
AX-57	P	2020	X	X	X	X	X	X	X	X	X	X
BB-229	P	2020	X	X	X	X	X	X	X	X	X	X
BN-36	P	2018	X	X	X	X	X	X	X	X	X	X
BN-38	P	2018	X	X	X	X	X	X	X	X	X	X
BY-3	P	2020	X	X	X	X	X	X	X	X	X	X
CC-97	P	2020	X	X	X	X	X	X	X	X	X	X
DD-175	P	2020	X	X	X	X	X	X	X	X	X	X
E-60	P	2020	X	X	X	X	X	X	X	X	X	X
HH-100	P	2020	X	X	X	X	X	X	X	X	X	X
HH-120	P		X	X	X	X	X	X	X	X	X	X
HH-82	P		X	X	X	X	X	X	X	X	X	X
HH-97	P	2020	X	X	X	X	X	X	X	X	X	X
KK-21	P	2020	X	X	X	X	X	X	X	X	X	X
KK-61	P	2020	X	X	X	X	X	X	X	X	X	X
KK-68	P	2020	X	X	X	X	X	X	X	X	X	X
KK-78	P	2020	X	X	X	X	X	X	X	X	X	X
N-315	P		X	X	X	X	X	X	X	X	X	X
NN-29	P	2019	X	X	X	X	X	X	X	X	X	X
PP-22	P	2019	X	X	X	X	X	X	X	X	X	X
PP-27	P	2020	X	X	X	X	X	X	X	X	X	X
PP-32	P	2020	X	X	X	X	X	X	X	X	X	X
QQ-51	P	2012	X	X	X	X	X	X	X	X	X	X
QQ-52	P	2014	X	X	X	X	X	X	X	X	X	X
QQ-58	P	2020	X	X	X	X	X	X	X	X	X	X
QQ-59	P	2020	X	X	X	X	X	X	X	X	X	X
QQ-60	P	2020	X	X	X	X	X	X	X	X	X	X
RR-25	P	2019	X	X	X	X	X	X	X	X	X	X
RR-26	P	2020	X	X	X	X	X	X	X	X	X	X
RR-29	P	2020	X	X	X	X	X	X	X	X	X	X
RR-35	P	2019	X	X	X	X	X	X	X	X	X	X
RR-38	P	2019	X	X	X	X	X	X	X	X	X	X
RR-39	P	2019	X	X	X	X	X	X	X	X	X	X
SS-30	P	2019	X	X	X	X	X	X	X	X	X	X
SS-43	P	2019	X	X	X	X	X	X	X	X	X	X
TT-28	P	2020	X	X	X	X	X	X	X	X	X	X
U-20	P	2020	X	X	X	X	X	X	X	X	X	X

City of Appleton Ongoing Screening Program

Outfall Screening Schedule, by Year

Outfall ID	Class	Last Screened	2021	2022	2023	2024	2025	2026	2027	2028	2029	2030
W-260	P	2020	X	X	X	X	X	X	X	X	X	X
Y-336	P	2020	X	X	X	X	X	X	X	X	X	X
Z-129	P	2020	X	X	X	X	X	X	X	X	X	X
Non-Priority Major Outfalls (every 5 years)												
AD-345	NPM	2011	X					X				
AF-70	NPM		X					X				
AQ-124	NPM	2016	X					X				
AQ-130	NPM	2016	X					X				
BP-95	NPM	2018	X					X				
JJ-43	NPM	2016	X					X				
AG-40	NPM	2018		X					X			
AG-41	NPM	2018		X					X			
BT-28	NPM	2017		X					X			
IDDE-100	NPM	2018		X					X			
IDDE-101	NPM	2018		X					X			
P-192	NPM	2018		X					X			
AE-17	NPM	2020			X					X		
BU-11	NPM	2020			X					X		
BU-12	NPM	2020			X					X		
EE-195	NPM	2020			X					X		
FF-108	NPM	2020			X					X		
II-48	NPM	2020			X					X		
B-75	NPM	2019				X					X	
C-553	NPM	2019				X					X	
F-43	NPM	2020				X					X	
KK-19x	NPM	2020				X					X	
L-32	NPM	2019				X					X	
N-319	NPM	2020				X					X	
AT-6	NPM	2019					X					X
BM-97	NPM	2020					X					X
CC-116	NPM	2020					X					X
IDDE-102	NPM	2019					X					X
J-141	NPM	2020					X					X
Non-Priority Non-Major Outfalls (every 10 years)												
A-21A	NPNM		X									
AF-129	NPNM		X									
AF-131	NPNM		X									
AF-134	NPNM		X									
AF-135	NPNM		X									
AF-138	NPNM		X									
AF-140	NPNM		X									
B-71	NPNM		X									
B-72	NPNM		X									
BI-9	NPNM		X									
C-362	NPNM		X									
CD-10	NPNM		X									
CD-8	NPNM		X									

City of Appleton Ongoing Screening Program

Outfall Screening Schedule, by Year

Outfall ID	Class	Last Screened	2021	2022	2023	2024	2025	2026	2027	2028	2029	2030
CE-27	NPNM		X									
CF-8	NPNM		X									
KK-67	NPNM		X									
L-96	NPNM		X									
N-316	NPNM		X									
N-332	NPNM		X									
N-353	NPNM		X									
N-354	NPNM		X									
X-627	NPNM		X									
XX-10	NPNM		X									
Y-252	NPNM		X									
Y-96	NPNM		X									
AC-13	NPNM	2010		X								
AG-3	NPNM	2018		X								
BV-170	NPNM			X								
CD-6	NPNM	2018		X								
I-34	NPNM			X								
I-36	NPNM			X								
J-144	NPNM			X								
J-146	NPNM			X								
J-151	NPNM			X								
N-369	NPNM	2014		X								
N-388	NPNM			X								
N-390	NPNM	2020		X								
N-399	NPNM			X								
N-400	NPNM			X								
P-188	NPNM			X								
P-222	NPNM	2018		X								
P-231	NPNM			X								
P-241	NPNM			X								
P-245	NPNM			X								
P-247	NPNM			X								
V-136	NPNM	2020		X								
VV-74	NPNM			X								
X-628	NPNM			X								
XX-6	NPNM	2018		X								
Z-173	NPNM			X								
AH-2	NPNM	2020			X							
AJ-13	NPNM	2015			X							
AJ-15	NPNM	2017			X							
AK-9	NPNM	2016			X							
AL-3	NPNM	2016			X							
BB-226	NPNM	2015			X							
CH-2	NPNM				X							
CH-3	NPNM				X							
FF-115	NPNM	2015			X							
GG-68	NPNM	2015			X							

City of Appleton Ongoing Screening Program

Outfall Screening Schedule, by Year

Outfall ID	Class	Last Screened	2021	2022	2023	2024	2025	2026	2027	2028	2029	2030
GG-69	NPNM	2015			X							
GG-71	NPNM	2015			X							
GG-73	NPNM	2015			X							
GG-75	NPNM	2015			X							
GG-76	NPNM	2015			X							
GG-77	NPNM	2015			X							
UU-25	NPNM	2018			X							
VV-62	NPNM	2018			X							
X-560	NPNM	2018			X							
X-630	NPNM	2018			X							
X-632	NPNM	2018			X							
X-633	NPNM	2018			X							
X-634	NPNM	2018			X							
X-657	NPNM	2018			X							
C-19	NPNM	2020				X						
CI-31	NPNM					X						
CI-32	NPNM					X						
CI-41	NPNM					X						
CI-54	NPNM					X						
E-58	NPNM	2020				X						
H-60	NPNM	2015				X						
KK-62	NPNM	2015				X						
KK-65	NPNM	2015				X						
KK-66	NPNM	2020				X						
L-78	NPNM	2014				X						
L-80	NPNM	2014				X						
L-83	NPNM	2014				X						
LL-24	NPNM	2010				X						
LL-25	NPNM	2010				X						
M-10	NPNM	2015				X						
MM-33	NPNM	2014				X						
N-317	NPNM	2014				X						
N-318	NPNM	2014				X						
N-331	NPNM	2014				X						
N-362	NPNM	2014				X						
N-363	NPNM	2020				X						
N-367	NPNM	2014				X						
OO-34	NPNM	2014				X						
WW-4	NPNM	2014				X						
SS-32	NPNM	2020					X					
SS-33	NPNM	2020					X					
SS-34	NPNM	2019					X					
SS-35	NPNM	2020					X					
SS-36	NPNM	2020					X					
SS-39	NPNM	2020					X					
V-335	NPNM	2016					X					
V-336	NPNM	2016					X					

City of Appleton Ongoing Screening Program

Outfall Screening Schedule, by Year

Outfall ID	Class	Last Screened	2021	2022	2023	2024	2025	2026	2027	2028	2029	2030
V-339	NPNM	2016					X					
V-342	NPNM	2016					X					
V-344	NPNM	2016					X					
V-355	NPNM	2016					X					
V-382	NPNM	2016					X					
V-397	NPNM	2016					X					
V-400	NPNM	2016					X					
V-401	NPNM	2016					X					
V-404	NPNM	2016					X					
V-405	NPNM	2016					X					
V-412	NPNM	2016					X					
V-413	NPNM	2016					X					
V-414	NPNM	2016					X					
V-415	NPNM	2016					X					
V-430	NPNM	2016					X					
V-431	NPNM	2016					X					
V-432	NPNM	2016					X					
AD-312	NPNM	2010						X				
AD-323	NPNM	2010						X				
AD-332	NPNM	2010						X				
AD-336	NPNM	2010						X				
AD-338	NPNM	2010						X				
AD-341	NPNM	2010						X				
AD-342	NPNM	2010						X				
AD-355	NPNM	2010						X				
AD-405	NPNM	2010						X				
AD-409	NPNM	2010						X				
AQ-126	NPNM	2012						X				
AQ-127	NPNM	2012						X				
AQ-129	NPNM	2012						X				
AW-62	NPNM	2012						X				
BH-3	NPNM	2010						X				
BH-5	NPNM	2010						X				
BO-38	NPNM	2012						X				
BO-46	NPNM	2012						X				
BO-47	NPNM	2012						X				
BO-49	NPNM	2012						X				
BP-103	NPNM	2013						X				
BP-104	NPNM	2013						X				
BP-105	NPNM	2013						X				
BP-89	NPNM	2013						X				
BP-91	NPNM	2013						X				
AX-46	NPNM	2017							X			
AY-1	NPNM	2018							X			
BR-26	NPNM	2017							X			
BS-21	NPNM	2017							X			
BT-13	NPNM	2017							X			

City of Appleton Ongoing Screening Program

Outfall Screening Schedule, by Year

Outfall ID	Class	Last Screened	2021	2022	2023	2024	2025	2026	2027	2028	2029	2030
BT-20	NPNM	2017							X			
BT-22	NPNM	2017							X			
BT-24	NPNM	2017							X			
BT-25	NPNM	2017							X			
BT-26	NPNM	2017							X			
BT-27	NPNM	2017							X			
BT-29	NPNM	2017							X			
CC-96	NPNM	2014							X			
IDDE-105	NPNM	2017							X			
J-140	NPNM	2014							X			
K-18	NPNM	2014							X			
X-562	NPNM	2017							X			
X-564	NPNM	2017							X			
X-565	NPNM	2017							X			
X-566	NPNM	2017							X			
X-567	NPNM	2017							X			
X-574	NPNM	2017							X			
X-575	NPNM	2017							X			
X-576	NPNM	2017							X			
X-658	NPNM	2017							X			
BP-110	NPNM	2013								X		
BP-113	NPNM	2013								X		
BP-115	NPNM	2013								X		
BP-81	NPNM	2013								X		
BP-82	NPNM	2013								X		
BP-86	NPNM	2013								X		
BP-88	NPNM	2013								X		
BP-96	NPNM	2013								X		
BP-97	NPNM	2013								X		
BP-98	NPNM	2013								X		
BP-99	NPNM	2013								X		
BV-118	NPNM	2013								X		
BV-119	NPNM	2013								X		
BV-121	NPNM	2013								X		
BV-123	NPNM	2013								X		
BV-124	NPNM	2013								X		
BV-156	NPNM	2013								X		
BV-159	NPNM	2013								X		
BV-165	NPNM	2013								X		
BV-166	NPNM	2013								X		
BW-14	NPNM	2013								X		
BW-18	NPNM	2013								X		
BW-19	NPNM	2013								X		
BX-4	NPNM	2013								X		
BX-7	NPNM	2013								X		
AF-116	NPNM	2019									X	
AF-67	NPNM	2019									X	

City of Appleton Ongoing Screening Program

Outfall Screening Schedule, by Year

Outfall ID	Class	Last Screened	2021	2022	2023	2024	2025	2026	2027	2028	2029	2030
AF-88	NPNM	2019									X	
AF-91	NPNM	2019									X	
AN-12	NPNM	2019									X	
AN-9	NPNM	2019									X	
AS-5	NPNM	2020									X	
BQ-25	NPNM	2013									X	
BQ-27	NPNM	2013									X	
BV-126	NPNM	2013									X	
BV-128	NPNM	2013									X	
BV-129	NPNM	2013									X	
BV-131	NPNM	2013									X	
BV-133	NPNM	2013									X	
BV-135	NPNM	2013									X	
BV-136	NPNM	2013									X	
BV-138	NPNM	2013									X	
BV-139	NPNM	2013									X	
BV-140	NPNM	2013									X	
BV-142	NPNM	2013									X	
BV-144	NPNM	2013									X	
BZ-20	NPNM	2019									X	
BZ-23	NPNM	2019									X	
BZ-26	NPNM	2019									X	
CB-21	NPNM	2016									X	
AO-59	NPNM	2019										X
AT-4	NPNM	2019										X
AU-69	NPNM	2019										X
AZ-54	NPNM	2020										X
BC-71	NPNM	2020										X
BC-76	NPNM	2020										X
BC-79	NPNM	2020										X
BC-80	NPNM	2020										X
BD-15	NPNM	2020										X
BE-14	NPNM	2019										X
BF-7	NPNM	2019										X
BK-55	NPNM	2020										X
BK-56	NPNM	2020										X
BK-86	NPNM	2020										X
BL-10	NPNM	2020										X
BM-64	NPNM	2020										X
BV-117	NPNM	2020										X
BV-146	NPNM	2020										X
BV-147	NPNM	2020										X
BV-149	NPNM	2020										X
IDDE-103	NPNM	2020										X
IDDE-104	NPNM	2020										X
Totals			80	80	79	80	79	80	80	80	80	76

City of Appleton Ongoing Screening Program

Outfall Screening Schedule, by Year

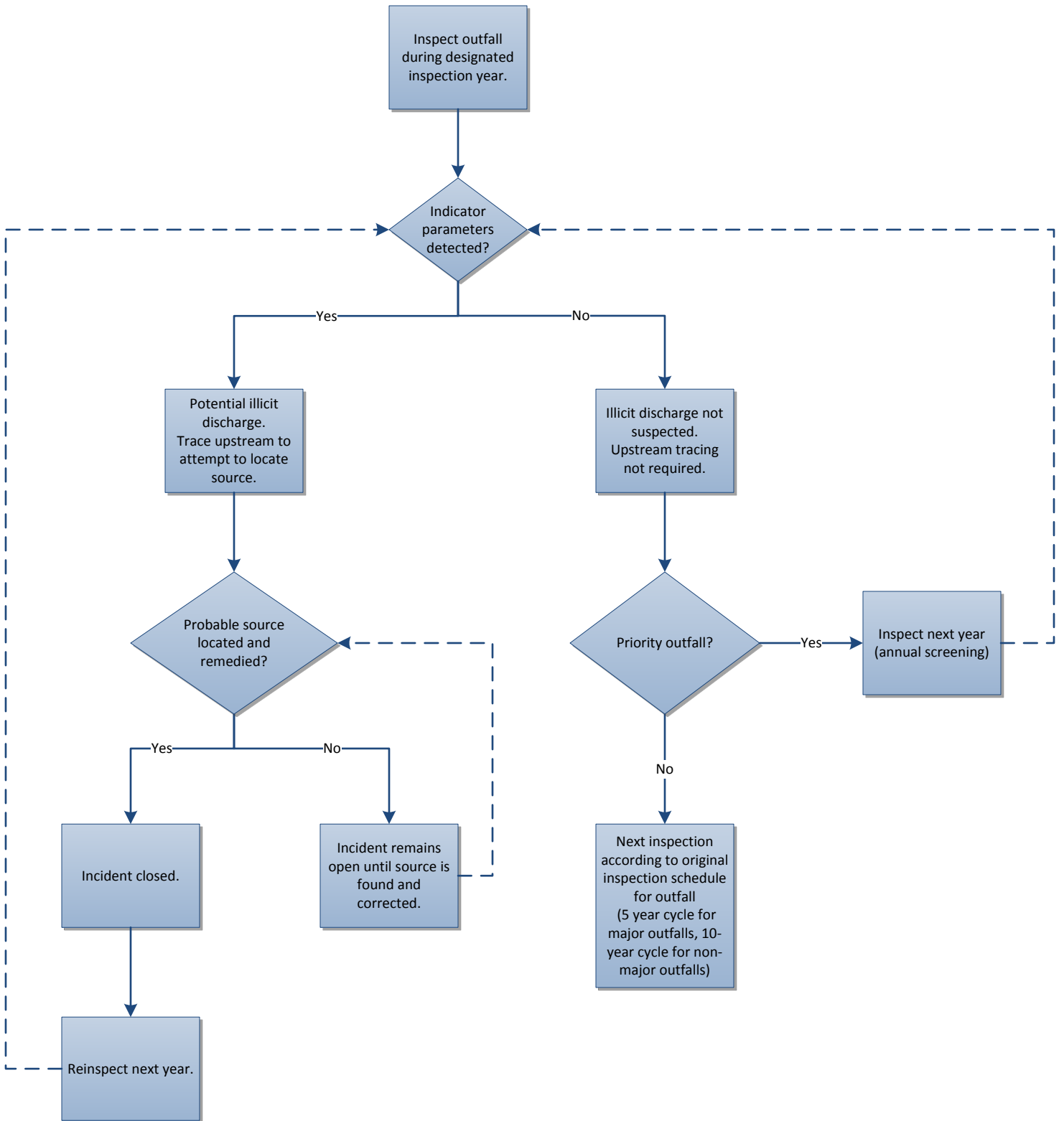
Outfall ID	Class	Last Screened	2021	2022	2023	2024	2025	2026	2027	2028	2029	2030
P	Priority Outfall											
NPM	Non-Priority Major Outfall											
NPNM	Non-Priority Non-Major Outfall											

Appendix E

Repeat Screening Process Flowchart

Repeat Screening Process

City of Appleton - IDDE Ongoing Field Screening



ENGINEERING • ARCHITECTURE • ENVIRONMENTAL

OMNI
ASSOCIATES
a **Westwood** company

One Systems Drive
Appleton, WI 54914
1-800-571-6677

omni.com
westwoodps.com