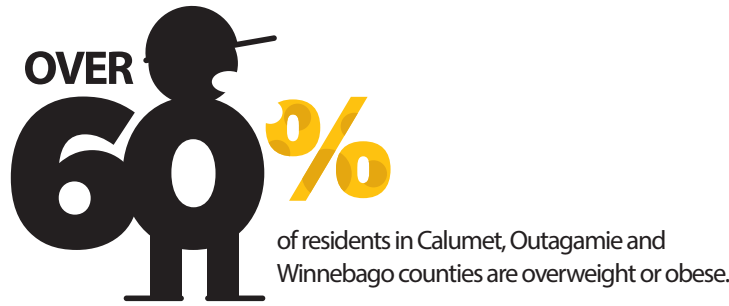


THE
WEIGHT OF THE
FOX VALLEY

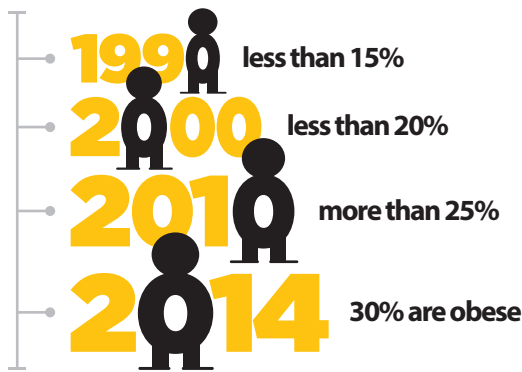
Calumet, Outagamie and Winnebago Counties

Healthy people. Healthy communities.

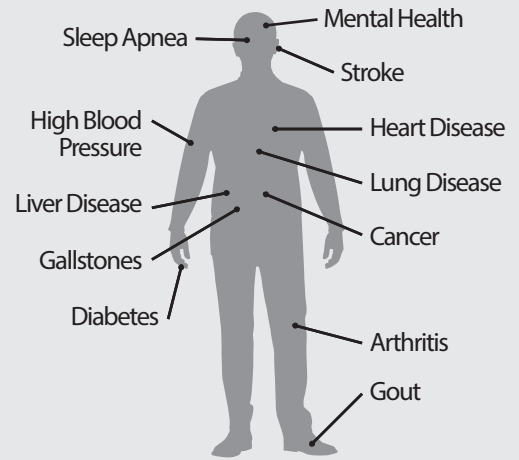
A Weighty Problem



OBESITY IS GROWING IN WISCONSIN
The rate of Wisconsin residents who are obese continues to grow.



EXCESS WEIGHT CAN LEAD TO HEALTH ISSUES INCLUDING:



Different Communities, Same Priority

We're bringing together people from Calumet, Outagamie and Winnebago Counties.



OUR VISION: ACHIEVE AND MAINTAIN A HEALTHY WEIGHT AT EVERY AGE.

TO ACHIEVE THIS VISION, WE NEED ALLIES IN:



Collaborative Community Efforts

The Weight of the Fox Valley provides an infrastructure for collaboration. Bringing together all the healthy initiatives in the area to make one powerful movement.



LEADERSHIP TEAM

Affinity Health System
 Appleton Area School District
 Aurora Health Care
 The Boldt Company
 Calumet County
 Casa Hispana
 Children's Hospital of Wisconsin - Fox Valley
 Chilton Public Schools
 City of Appleton
 Community First Credit Union
 Community Foundation for the Fox Valley Reg
 Fox Cities Community Health Center
 Galloway Company
 Hmong American Partnership
 Kimberly-Clark

Lara's Tortilla Flats
 Network Health
 Oshkosh Area Community Foundation
 Oshkosh Area School District
 Oshkosh Area United Way
 Oshkosh Community YMCA
 Outagamie County
 Post-Crescent Media
 Silver Star Brands
 ThedaCare
 United Way Fox Cities
 UW Health - Fox Valley
 UW-Oshkosh
 Winnebago County
 YMCA of the Fox Cities

Questions? Contact:

Weight of the Fox Valley - Keren Rosenberg, Program Manager
 Keren.Rosenberg@UnitedWayFoxCities.org - 920.954.7210



Join us!



VOLUNTEER

Join an action team and share your passion for wellness.



SPREAD THE WORD

Let everyone around you know about the Weight of the Fox Valley.



PLEDGE

Commit to add one healthy habit.
 Drink more water.
 Walk 3 times a week.



LIKE US

Like our page on Facebook.
 /WeightoftheFoxValley

Sources:

2011 Winnebago County Behavioral Risk Factor Surveillance System: Local, State, and National Data Comparison. Winnebago County, Oct. 2011. Web. 2 Sept. 2014.
 <http://www.co.winnebago.wi.us/sites/default/files/uploaded-files/brfss2011winnebagonal_0.pdf>.

"Adult Obesity Facts" Centers for Disease Control and Prevention. Centers for Disease Control and Prevention, 09 July 2014. Web. 13 Aug. 2014.
 <<http://www.cdc.gov/obesity/data/adult.html>>.

2011 Fox Cities LIFE Study.



www.wotfv.org