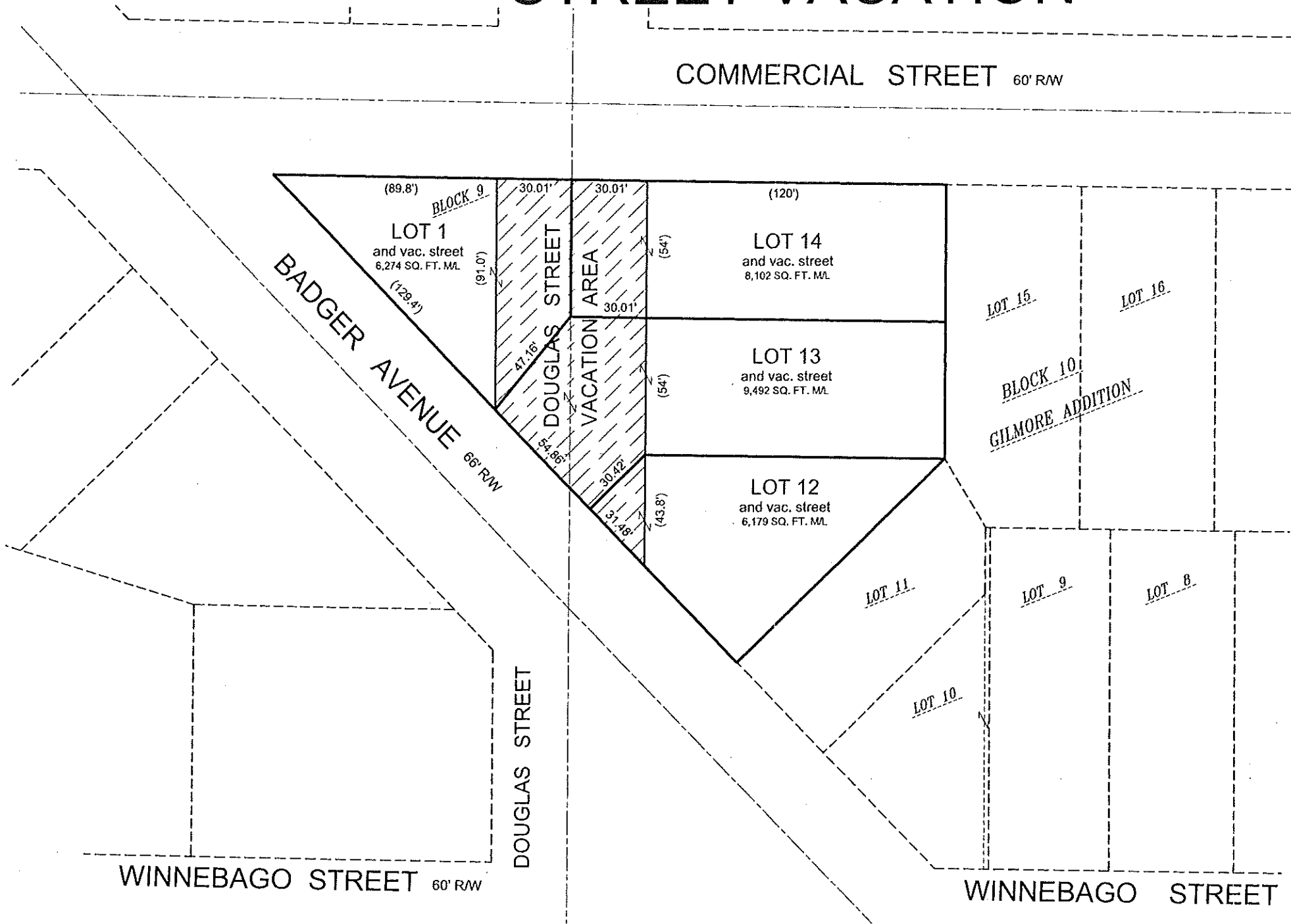
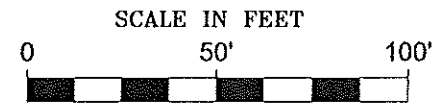


STREET VACATION



BEARINGS ARE REFERENCED TO THE WISCONSIN COUNTY COORDINATE SYSTEM, OUTAGAMIE COUNTY, NORTH LINE OF THE NW ¼ OF SECTION 27-21-17 RECORDED AS S.89°01'30"E.
 H:\Acad\Vacation\Douglas Street 1210_2014



CITY OF APPLETON
 DEPT. OF PUBLIC WORKS
 ENGINEERING DIVISION
 100 NORTH APPLETON STREET
 APPLETON, WI 54911
 920-832-6474
 DRAFTED BY: T. KROMM

STREET VACATION

COMMERCIAL STREET 60' ROW

BADGER AVENUE 66' ROW

DOUGLASS STREET

VACATION AREA

(89/8)

30.01'

30.01'

LOT 1

LOT 2

STREET

BEA
WIS
SYS
LINE
REC
H:VA



CIT