

*The City of Appleton provides this information "as is" and makes no warranty, representation or guarantee of any kind as to the content, accuracy, timeliness or completeness of any of the data information provided herein. The City of Appleton assumes no liability for any errors, omissions, or inaccuracies in the information provided regardless of how caused; or any decisions made or action taken or not taken by the user in reliance upon any information or data furnished hereunder.

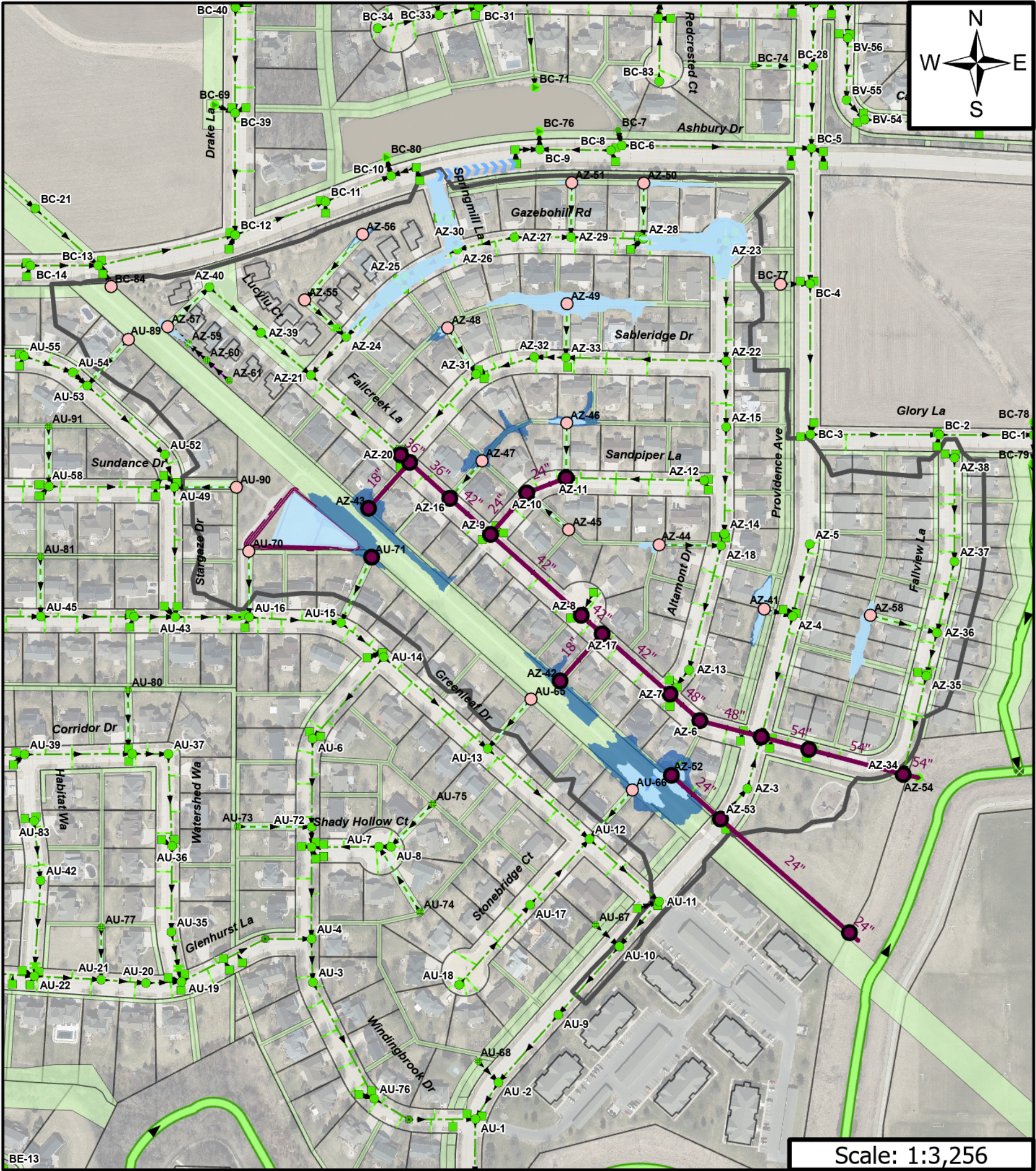
Legend

<ul style="list-style-type: none"> ○ Swap Casting (23) ➤➤➤ Existing Flow Direction ■ Existing 100yr Water Surface Elevation 	<ul style="list-style-type: none"> ▭ Project Area ▭ Parcel ▭ Easement 	<h4>Storm Node</h4> <ul style="list-style-type: none"> ● Bend ● End Section ■ Inlet ● Manhole ● Outlet Structure ■ Transition ● Yard Drain 	<h4>Storm Pipe</h4> <ul style="list-style-type: none"> ➤➤➤ Inlet Lead ➤➤➤ Mini Sewer ➤➤➤ Open Channel ➤➤➤ Storm Main ➤➤➤ Yard Drain Lead — Storm Lateral
	<h4>Building Impact</h4> <ul style="list-style-type: none"> ▭ Modeled ▭ Modeled & Reported ▭ Reported 		



Alternate 1: Lot Improvements

Providence Trails Flood Study
City of Appleton - Outagamie County, WI



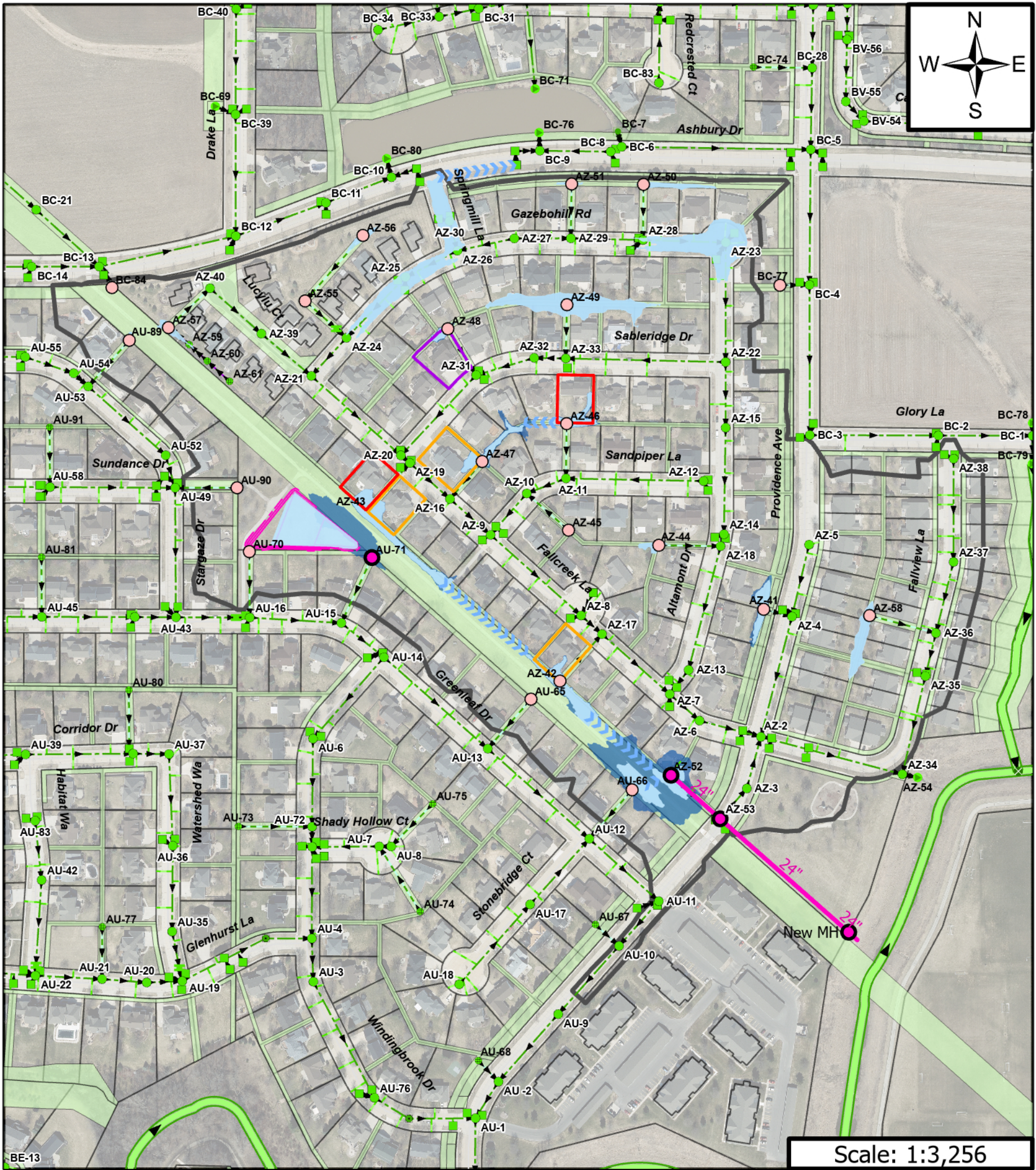
*The City of Appleton provides this information "as is" and makes no warranty, representation or guarantee of any kind as to the content, accuracy, timeliness or completeness of any of the data information provided herein. The City of Appleton assumes no liability for any errors, omissions, or inaccuracies in the information provided regardless of how caused; or any decisions made or action taken or not taken by the user in reliance upon any information or data furnished hereunder.

Legend

- | | | | |
|-------------------------------------|--|-------------------|-------------------|
| Swap Casting (23) | Existing 100yr Water Surface Elevation | Storm Node | Storm Pipe |
| Alt 2 Maintenance Hole | Project Area | Bend | Inlet Lead |
| Alt 2 Pipe | Parcel | End Section | Mini Sewer |
| Dry Detention Basin | Easement | Inlet | Open Channel |
| Alt 2 Flow Direction | | Manhole | Storm Main |
| Alt 2 100yr Water Surface Elevation | | Outlet Structure | Yard Drain Lead |
| | | Transition | Storm Lateral |
| | | Yard Drain | |



Alternate 2: ROW/Easement Improvements
Providence Trails Flood Study
City of Appleton - Outagamie County, WI



*The City of Appleton provides this information "as is" and makes no warranty, representation or guarantee of any kind as to the content, accuracy, timeliness or completeness of any of the data information provided herein. The City of Appleton assumes no liability for any errors, omissions, or inaccuracies in the information provided regardless of how caused; or any decisions made or action taken or not taken by the user in reliance upon any information or data furnished hereunder.

Legend

- | | | | |
|--|------------------------|--------------------|---------------------|
| ○ Swap Casting (23) | □ Parcel | Storm Node | Storm Pipe |
| ● Alt 3 Maintenance Hole | ▬ Project Area | | |
| — Alt 3 Pipe | ▬ Easement | ● Bend | ➤➤➤ Inlet Lead |
| — Dry Detention Basin | Building Impact | ● End Section | ➤➤➤ Mini Sewer |
| ➤➤➤ Alt 3 Flow Direction | | ■ Inlet | ➤➤➤ Open Channel |
| Alt 3 100yr Water Surface Elevation | | ● Manhole | ➤➤➤ Storm Main |
| Existing 100yr Water Surface Elevation | | ● Outlet Structure | ➤➤➤ Yard Drain Lead |
| | ■ Modeled | ■ Transition | — Storm Lateral |
| | ■ Modeled & Reported | ● Yard Drain | |
| | ■ Reported | | |



Alternate 3: ROW/Easement & Lot Improvements Providence Trails Flood Study City of Appleton - Outagamie County, WI