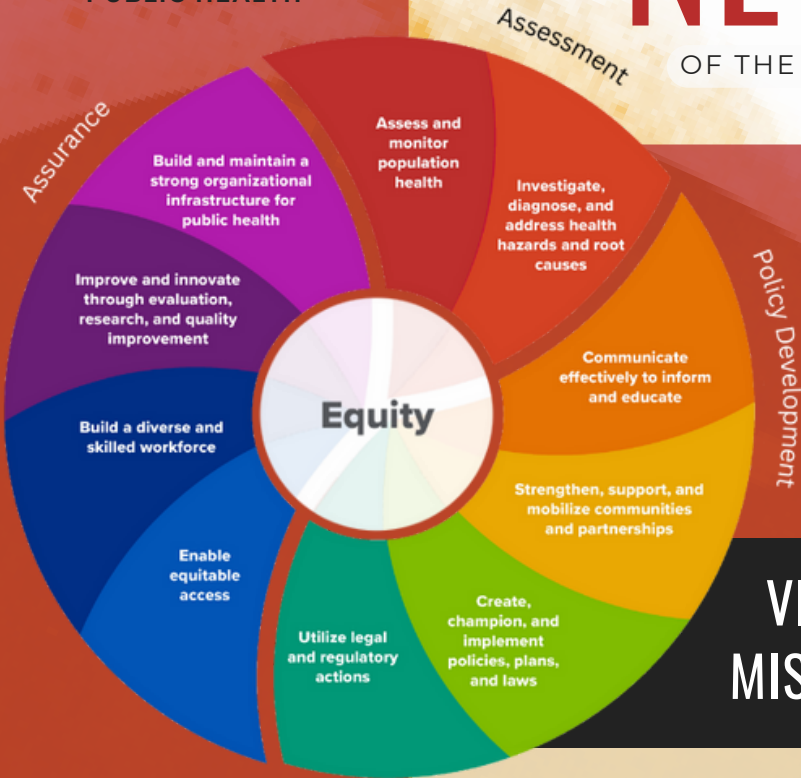


01.2024  
PUBLIC HEALTH

# NEWSLETTER

OF THE APPLETON PUBLIC HEALTH DEPARTMENT



## IN THIS ISSUE:

Appleton Community Health Assessment

Community Partner:  
Appleton CHA/CHIP Steering Committee

Meet the Steering Committee

**VISION:** Health for all, together.  
**MISSION:** Facilitate equitable community wellbeing through education, health promotion, and response to public health needs.

## 10 ESSENTIAL PUBLIC HEALTH SERVICES

Each month, the Appleton Health Department Newsletter features stories about how we are achieving each of the 10 Essential Public Health Services. This month, we focus on:

Essential Public Health Service #1: Assess and monitor population health status, factors that influence health, and community needs and assets.

## APPLETON COMMUNITY HEALTH ASSESSMENT RELEASES THIS SPRING

Understanding the health needs of the community by conducting Community Health Assessments and convening community members to address those needs through the Community Health Improvement Plan, are central to the work of local health departments.

Public health jurisdictions have well-defined geographical boundaries. This clear delineation often means that the populations they serve are unique to their jurisdiction. Different jurisdictions serve populations with diverse demographics, including age, ethnicity, socio-economic status, and health needs. This diversity requires tailored health assessments and improvement plans, reducing the chances of duplication. Health issues can vary significantly from one area to another due to factors like environment, industry, socio-economic conditions, and cultural practices. Jurisdictions focus on local health concerns specific to their population, which may not be relevant in other communities. Since the health challenges and needs are different in each jurisdiction, the strategies and plans developed by the community are also different. This customization to the local context and needs naturally reduces duplication. Although jurisdictions serve different populations, they often communicate and coordinate with neighboring jurisdictions. This helps in understanding focus areas in surrounding districts and ensures that efforts are not duplicated in districts where populations might overlap.

# COMMUNITY PARTNERS

## APPLETON COMMUNITY HEALTH IMPROVEMENT PLAN STEERING COMMITTEE



The Appleton Health Department recognizes that a “one-size-fits-all” series of questions cannot capture the health needs of a community, so a Steering Committee has been formed. The Steering Committee has come together to guide and oversee the development and implementation of Appleton’s CHA and to coordinate with the Tri-Country Community Health Improvement Coalition to build the Community Health Improvement Plan (CHIP) informed by the CHA results.

Health priorities can vary significantly by jurisdiction due to factors including environment, industry, socio-economic conditions, and cultural practices. It is essential to embed a diverse group of steering committee members including representation from public health, cultural groups, community organizations, and the education sector to ensure a broad range of perspectives and expertise.

Committee members collaborate to make sure data collection content and methods encompass as many Appleton residents as possible. Steering Committee members are involved in setting priorities, developing strategies, and outlining action plans related to the work. They also play a role in mobilizing community resources and partnerships to support data collection and implementation of the CHIP. We are grateful to our Steering Committee members for their committee, community expertise, and advocacy for Appleton residents.

## MEET THE STEERING COMMITTEE MEMBERS

Breanna Mekuly (Organizer)  
Community Health Supervisor  
Appleton Health Department

Beth Clay  
Executive Director of  
NEW Mental Health Connection

Dr. Charles Sepers  
Health Officer  
Appleton Health Department

Dr. Kenny E. Yarbrough  
Vice President  
Lawrence I.D.E.A.S.

Jena McNiel  
Public Health Nurse  
Appleton Health Department

Kayla McNamara  
Senior Director of Targeted  
Support Services  
Boys & Girls Club Fox Valley

Laura Jackson  
Executive Director, Student  
Services  
Appleton Area School District

Megan Zimmerman  
Outreach Program Director  
NAMI Fox Valley

Sonja Jensen  
Deputy Director & Nursing  
Supervisor  
Appleton Health Department

Wendy Krueger  
Vice President, Community  
Outreach & Development at  
United Way Fox Cities

## RESOURCES

[CDC-10 Essential Public  
Health Services -Full](#)



## BOARD OF HEALTH CALENDAR