

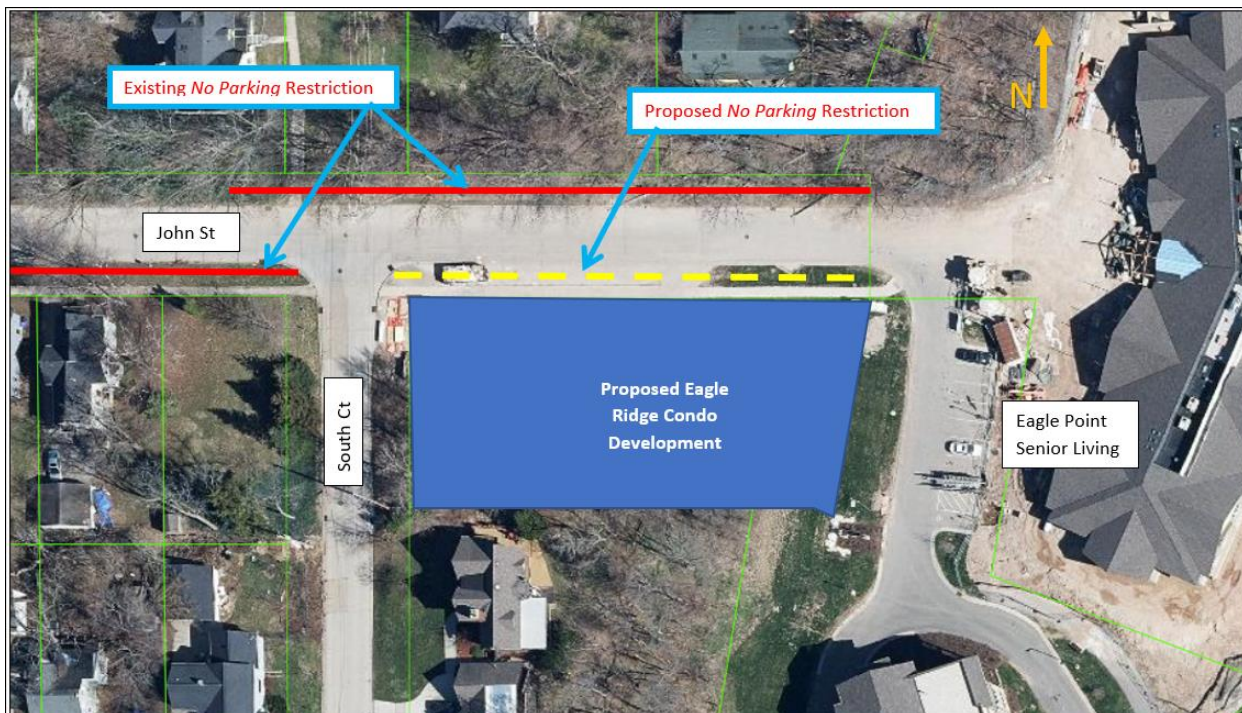


DEPARTMENT OF PUBLIC WORKS
Engineering Division – Traffic Section
2625 E. Glendale Avenue
Appleton, WI 54911
TEL (920) 832-5580
FAX (920) 832-5570

To: Municipal Services Committee
From: Eric Lom, P.E., City Traffic Engineer
Date: February 15, 2023
Re: On-street parking change related to proposed Eagle Ridge Condominium Development

In conjunction with the proposed Eagle Ridge condominium development, its developer is proposing to remove the existing parking cut-out area on the south side of the 900 block of E. John Street, adjacent to the development, as a means of accommodating the challenging site grades.

This block of John Street is quite narrow (28 feet), and there is significant parking pressure and truck use in the area. Based on this combination of factors, the developer has been advised that on-street parking would need to be removed on the south side of the block in order for the development to be feasible from a traffic safety standpoint, and that this removal of parking would require the approval of committee/council. As such, they are seeking approval of this change in conjunction with their site plan submittal.



To accomplish this, the following ordinance changes would be required:

1. **Create:** “Parking be prohibited on the south side of John Street from South Court, easterly to its terminus. This change would become effective at such time as the Eagle Ridge Condominium Development is completed.”