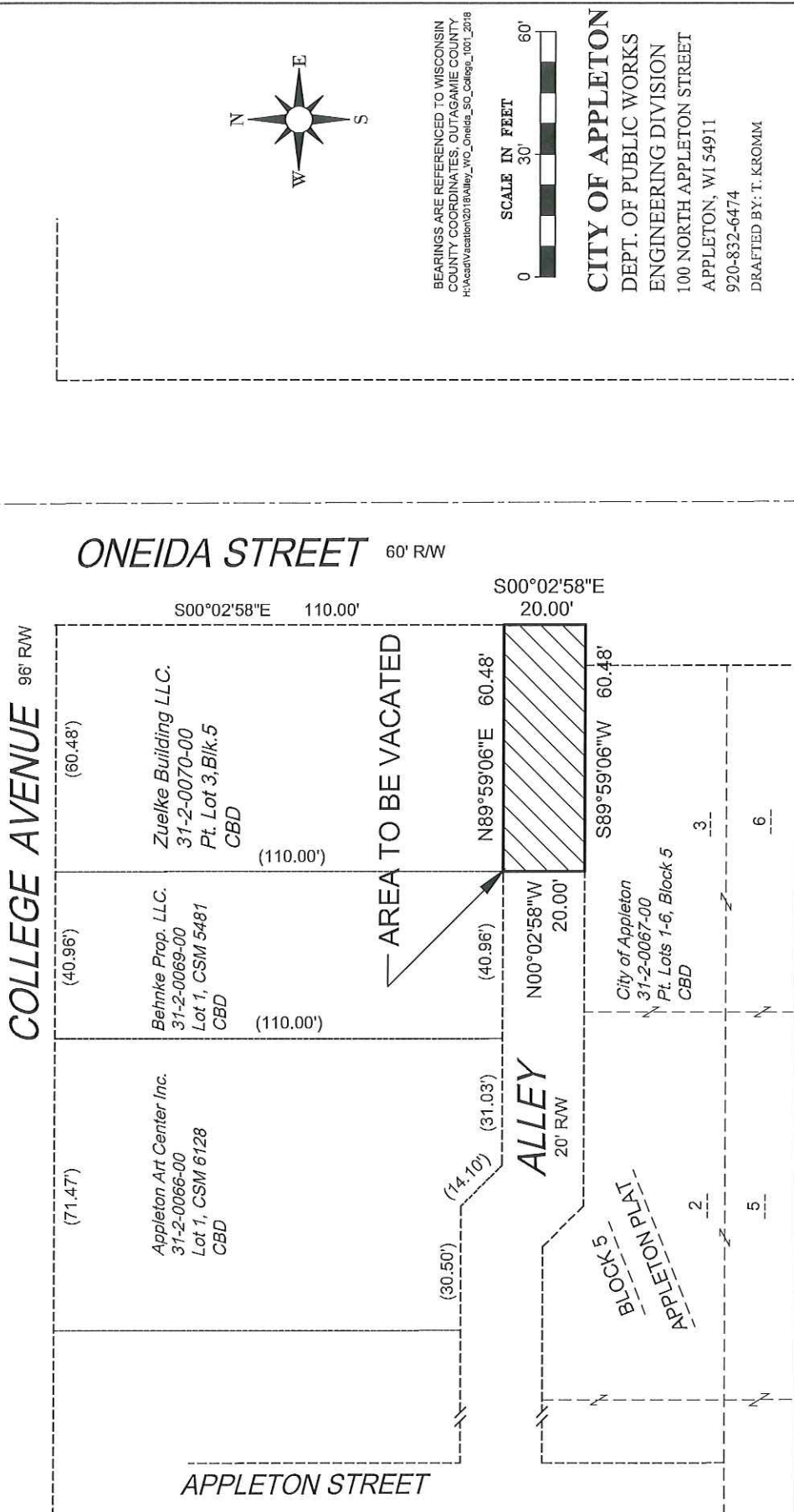


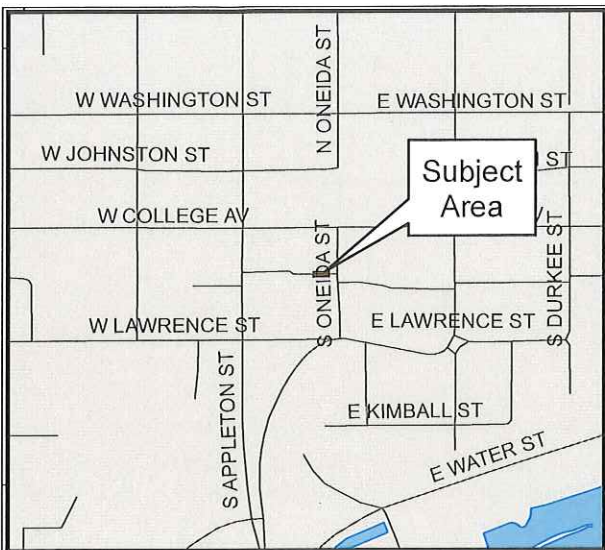
EXHIBIT "A"

PART OF LOT 3, BLOCK 5, APPLETON PLAT, (AKA SECOND WARD PLAT), ALL ACCORDING TO THE RECORDED ASSESSOR'S MAP OF THE CITY OF APPLETON, BEING LOCATED IN THE SE 1/4 OF THE SW 1/4 OF SECTION 26, TOWNSHIP 21 NORTH, RANGE 17 EAST, CITY OF APPLETON, OUTAGAMIE COUNTY, WISCONSIN.



BEARINGS ARE REFERENCED TO WISCONSIN COUNTY COORDINATES. OUTAGAMIE COUNTY
 H:\Acad\Vacation\2018\Alley_WO_Oneida_SO_College_1001_2018

CITY OF APPLETON
 DEPT. OF PUBLIC WORKS
 ENGINEERING DIVISION
 100 NORTH APPLETON STREET
 APPLETON, WI 54911
 920-832-6474
 DRAFTED BY: T. KROMM



Alley West of Oneida Street
Street Vacation
Zoning Map

2-0290-1

2-0287

10

100

W COLLEGE AV

E COLLEGE AV

121

111-13

109

107

101-05

101

103

107

109

111

2-0065

2-0066

0-0069

2-0069

2-0070

2-0038

2-0039

2-0040

2-0041

2-0042

S APPLETON ST

CBD

2-0067

Area to be Vacated

121

S ONEIDA ST

SOLIDERS SQUARE

2-0072

2-0052

120

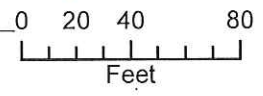
100

W LAWRENCE ST

PD/R-3

2-0142

S ONEIDA ST



City Plan Commission
7-9-19

Alley West of Oneida Street
Street Vacation
Aerial Map



College Av

Appleton St

Oneida St

Lawrence St

Area to be Vacated

CBD



City Plan Commission
7-9-19

