



# CITY OF APPLETON

## MEMORANDUM

**Date:** 06/02/2025

**To:** Municipal Services Committee

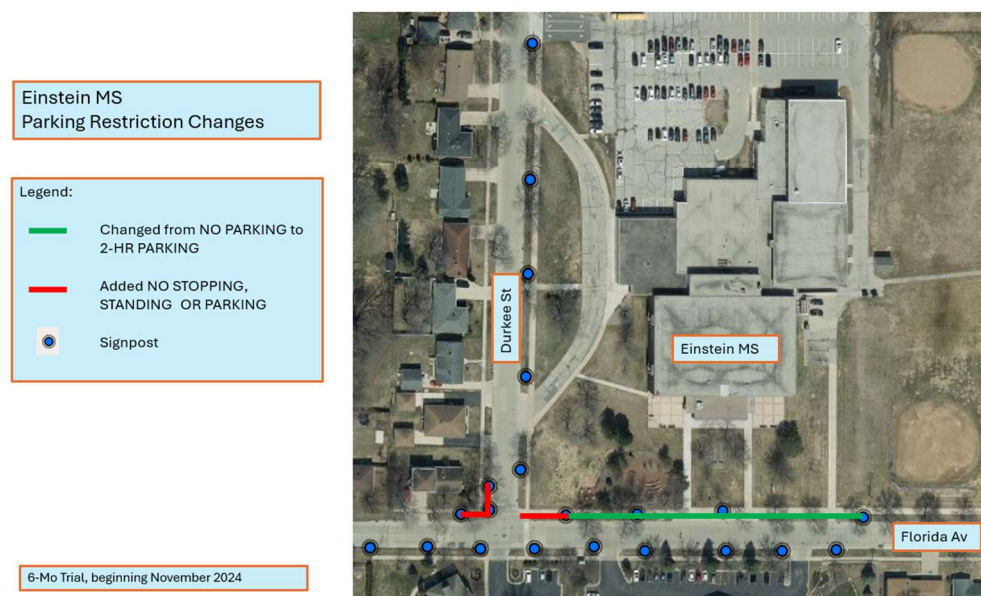
**From:** Mike Hardy, P.E., Traffic Engineer

**Subject:** Approve Parking changes on Florida Av and Durkee St by Einstein Middle School (follow-up to a 6-month evaluation)

At the request of the AASD, the City's Traffic Section recently assessed the possibility of changing the existing *No Parking* zone to a *2-hour Parking* zone adjacent to Einstein Middle School along Florida Avenue. Based on our review, we initiated an evaluation period in November of 2024.

The evaluation involved changing the *No Parking* zone to a *2-hour Parking* zone along the north side of Florida Avenue adjacent the school. Additional *No Stopping* zone designations were added at the Durkee Street / Florida Avenue intersection to help with visibility of vehicles and pedestrian (see *Figure 1* below). This change has had the desired effect, Einstein Middle School is satisfied, and we have not received any other feedback from the community. Based on this, we recommend the changes be made permanent.

*Figure 1: 6 Month Evaluation Period Parking Changes, beginning November 2024*



Additionally, this evaluation period revealed the existing school day restriction times of 7:30 a.m. to 4:30 p.m. do not align with the current school bell schedule for Einstein Middle School and Classical Charter School. Based on this, we recommend all school day restrictions along Durkee Street and Florida Avenue be updated to 7:00 a.m. to 4:00 p.m. Lastly, at the intersection of Durkee Street and Florida Avenue, we recommend the *No Stopping* zone designations become continuous.

To accomplish this, the following ordinance changes are necessary:

1. **Create:** "Stopping/standing/parking be prohibited on school days from 7:00 a.m. to 4:00 p.m. on the north side of Florida Avenue from Durkee Street to a point 27 feet west of Durkee Street."
2. **Create:** "Stopping/standing/parking be prohibited on the west side of Durkee Street from Florida Avenue to a point 25 feet north of Florida Avenue."
3. **Create:** "Stopping/standing/parking be prohibited on the north side of Florida Avenue from Durkee Street to a point 45 feet east of Durkee Street."
4. **Create:** "Parking be restricted to two hours on school days from 7:00 a.m. to 4:00 p.m. on the north side of Florida Avenue a point 45 feet east of Durkee Street to a point 433 feet east of Durkee Street."
5. **Create:** "Stopping/standing/parking be prohibited on school days from 7:00 a.m. to 4:00 p.m. on the east side of Durkee Street from Florida Avenue to a point 170 feet north of Florida Avenue."
6. **Create:** "No Parking/Passenger Loading Zone/No Unoccupied Vehicles from 7:00 a.m. to 4:00 p.m. on school days on east side of Durkee Street a point 170 feet north of Florida Avenue to a point 422 feet north of Florida Avenue."
7. **Create:** "Stopping/standing/parking be prohibited on school days from 7:00 a.m. to 4:00 p.m. on the east side of Durkee Street from a point 422 feet north of Florida Avenue to a point 535 feet south of Capitol Drive."
8. **Create:** "Stopping/standing/parking be prohibited on school days from 7:00 a.m. to 4:00 p.m. on the east side of Durkee Street from Capitol Drive to a point 178 feet south of Capitol Drive."
9. **Create:** "Stopping/standing/parking be prohibited on school days from 7:00 a.m. to 4:00 p.m. on west side of Durkee Street from Capitol Drive to a point 510 feet south of Florida Avenue."
10. **Create:** "Stopping/standing/parking be prohibited on school days 7:00 a.m. to 4:00 p.m. on the south side of Florida Avenue from a point 85 feet east of Durkee Street to a point 450 feet east of Durkee Street."
11. **Repeal Ord. 173-11:** "Stopping, standing and parking be prohibited on school days from 7:30 a.m. to 4:30 p.m. on the south side of Florida Avenue from Durkee Street to a point 140 feet west of Durkee Street."
12. **Create:** "Stopping/standing/parking be prohibited on the south side of Florida Avenue from Durkee Street to a point 75 feet west of Durkee Street."