



December 2024 Construction Update



Tina Krueger
Communication Coordinator

Construction Updates

The last month's key building project progress points from Boldt include:

- Installing furniture and shelving.
- Installing passenger elevator.
- Installing front entrance and canopy.
- Polishing floor and sealing concrete.
- Painting in the community meeting room, commons and pre-function area.
- Continuing mechanical, electrical, plumbing and fire protection work.
- Continuing exterior glazing and caulking install.
- Fire and smoke damper testing took place and passed inspection.
- Installed acoustical tectum panels and wall panels in study and

creation rooms.

- Installed acoustical ceiling in commons area.
- Installed lower-level service desk solid surface top.
- Installed carpet, resilient, and ceramic tile on ground and upper levels.
- Installed doors and hardware on ground and upper levels.
- Installed light fixtures on ground and upper levels.
- Installed exterior site lighting.
- Installed steel handrails and fascia at commons area, west skylight, railing at connecting stairs, and exterior handrails.
- Installed graphics on walls and glass.
- Installed metal panel on west side of commons roof.
- Installed coping at the parapet.
- Installed flagpole.
- Poured parking meter pads in parking lot.

Opening day for the new library is on track for early 2025.

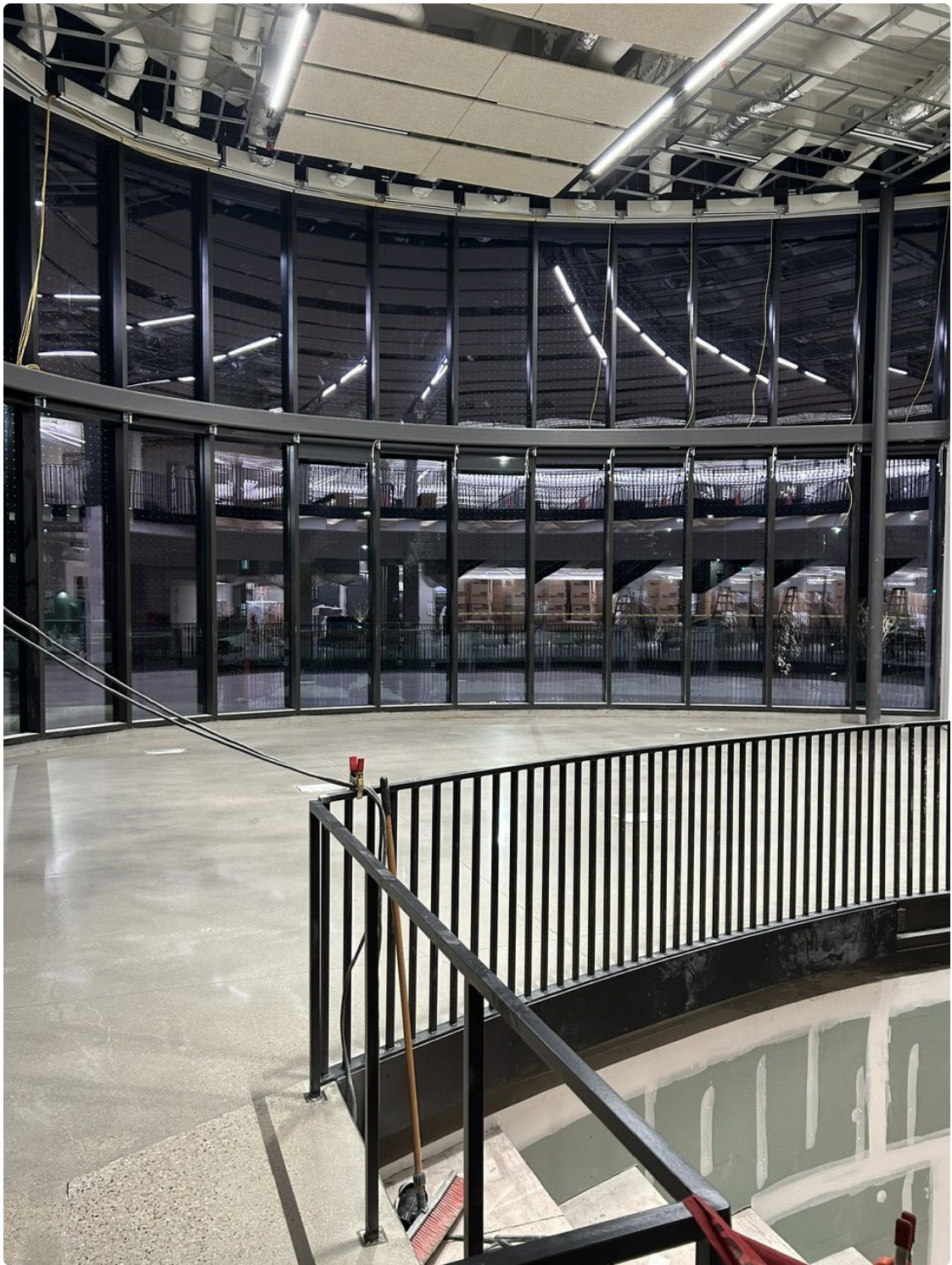
Additional Updates

- Skidmore, Owings & Merrill has shared [architectural fly through animations](#). [Floor plans](#) and [renderings are available for viewing online](#). Please note furnishing colors in the animations and renderings are subject to change.
- [Friends of Appleton Public Library](#) and the Capital Campaign Committee continue to make strong fundraising progress. To date they have raised \$11.8 M of their \$12 M goal.

To learn more about the campaign and how you can participate, visit the [Friends website](#).



Commons Ceiling



Commons Area



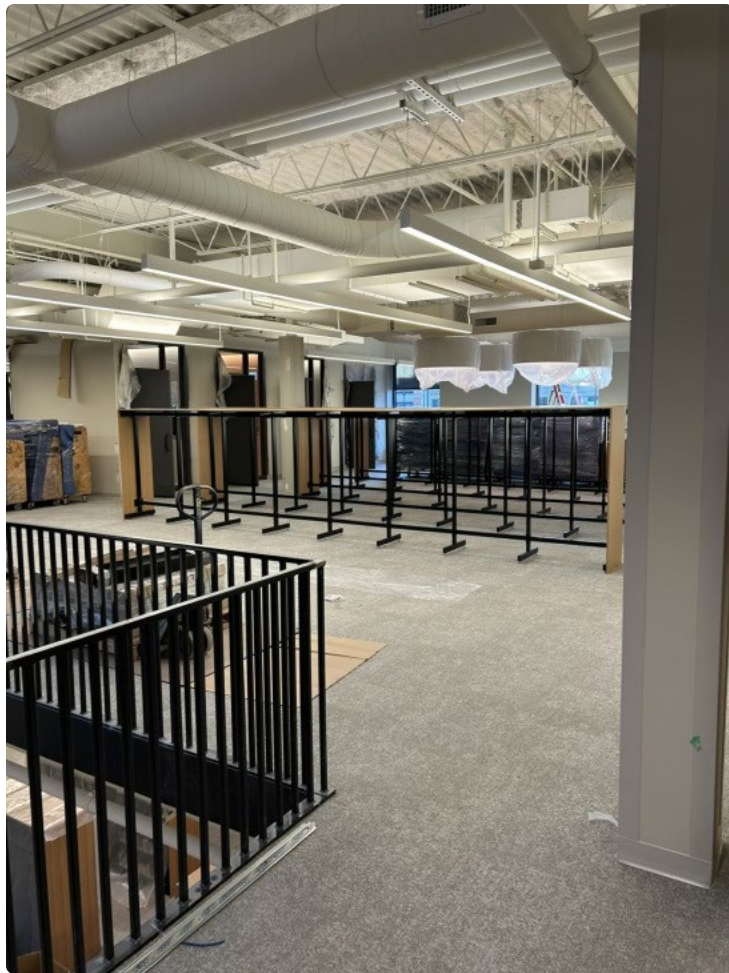
Lower-Level Wall Graphics



Lower-Level Wall Graphics



Lower-Level Shelving



Upper-Level Shelving



Flagpole and Front of Building



Parking Lot