



"... meeting community needs ... enhancing quality of life."

DEPARTMENT OF PUBLIC WORKS
Engineering Division – Traffic Section
2625 E. Glendale Avenue
Appleton, WI 54911
TEL (920) 832-5580
FAX (920) 832-5570

To: Municipal Services Committee
From: Eric Lom, City Traffic Engineer
Date: July 24, 2018
Re: Parking restriction changes on Banta Court
Proposed Six-Month Trial Period

The Traffic Section was contacted by a representative from the Appleton Fire Department (AFD) regarding a parking issue on Banta Court. They have been experiencing serious problems accessing the Riverheath Drive area during times of heavy on-street parking in the area. This typically occurs during large events, such as when live music events or football games occur. A memo from the AFD detailing the concerns is attached.

Banta Court is constructed at a width of 32 feet face-to-face, which is a typical width for a low-volume residential roadway with relatively low on-street parking usage. This width is not adequate for a collector-type street with bumper-to-bumper parking on both sides. It is further compounded by the fact that Banta Court serves as one of only two accesses to the Riverheath area. It is also noteworthy that the traffic and parking pressure will only continue to increase as additional development occurs in the Riverheath area.

Based on a review of the situation, we concur that the proposed parking removal is necessary to ensure safe passage of two-way traffic and emergency access to the Riverheath area. Based on this information, we propose a 6-month trial to test the changes indicated in the AFD memo.



"...meeting community needs...enhancing quality of life."

**APPLETON FIRE DEPARTMENT
700 N. DREW STREET
APPLETON, WI 54911**

MEMORANDUM

To: Eric Lom, Traffic Engineer
From: Joseph Strauss, Battalion Chief
Date: June 28, 2018
Re: Parking issues on Banta Court

With the continued development of the Banta Court/Riverheath Way, we have experienced increased difficulties with our emergency response to the area when special events (i.e. concerts, sporting events, etc.) occur and both sides of the roadway are parked with vehicles. When the Banta Bowl is in use and the complexes on Riverheath Way have had events/concerts, our emergency response has been severely hampered due to the narrowness of the roadway.

Banta Court is a 32' wide street, which would typically be located in a residential area. When special events occur and both sides of Banta Court are parked with vehicles, the street narrows to less than 16'. The typical width of a fire engine is approximately 10' (mirror to mirror) and the typical width of a ladder truck is approximately 12' (mirror to mirror). Our problems are further complicated on Banta Court due to the curves in the roadway near John Street and vehicles are unable to park parallel to the curb.

When vehicles are parked on both sides of Banta Court, the available roadway is extremely narrow, requiring our apparatus to slow to a near crawl to safely navigate the roadway. If our apparatus is met by a vehicle approaching from the opposite direction, it is impossible for either vehicle pass. In those instances, there is no location for either vehicle to move over to allow the other to pass. We have included sample pictures of the difficulties we face when travelling on Banta Court. Additionally, there are fire hydrants along Banta Court that are encroached upon by parked vehicles potentially making it difficult for firefighting operations.

Thus, it is our recommendation that the north side of Banta Court (westbound traffic) be posted as "NO PARKING - THIS SIDE OF THE STREET" from the John Street entrance to the intersection of Riverheath Way. Further, we recommend that the northern one-half of the cul du sac area beneath the College Avenue Bridge on Banta Court also be posted as "NO PARKING - THIS SIDE OF THE STREET".

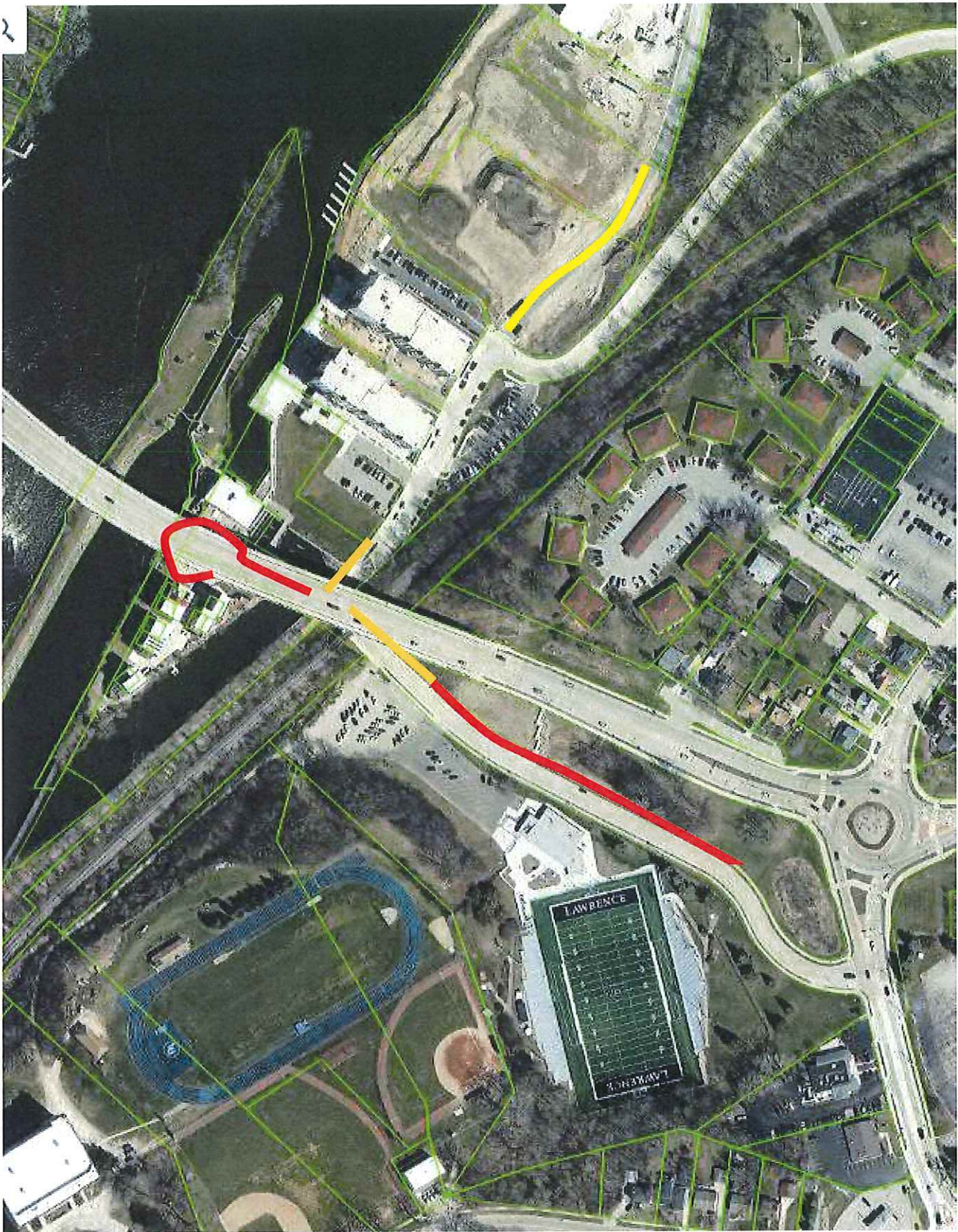
We understand that parking is at a premium near the Banta Bowl. Currently, no parking is posted on the north side of Banta Court from John Street to a point along the curve as one travels west. No

"Appleton Fire Department....serving with P.R.I.D.E."

parking is also posted on the north side of Banta Court near the intersection of Banta Court and Riverheath Way. Also, a fire hydrant is located along the north side of the Banta Court which should be respected by those parking on the roadway. We feel that the loss of the parking beyond those areas that are currently restricted can be more than made up by individuals parking in the surface lot adjacent to Mead Pool. The majority of the issues we see occur in the Fall during football games when the pool is closed. However, we have seen increased activity from concerts sponsored by Mr. Brews Taphouse at 201 Riverheath Way. Concert goers could just as easily park at the Mead Pool lot, or in the surface lots on Riverheath Way, or finally in the marked stalls directly on Riverheath Way.

The safe response by our emergency vehicles, as well as the Appleton Police Department and Gold Cross Ambulance, should be considered in making the decision to restrict parking on the north side of Riverheath Way.

Thus, it is the recommendation of the Appleton Fire Department that the north side of Banta Court from John Street to and through the cul de sac be posted as "NO PARKING".



Yellow = Private (hotel), No Parking (they put up temporary "No Parking" signs)

Orange = already no parking based on distance to intersection, DPW posting signs

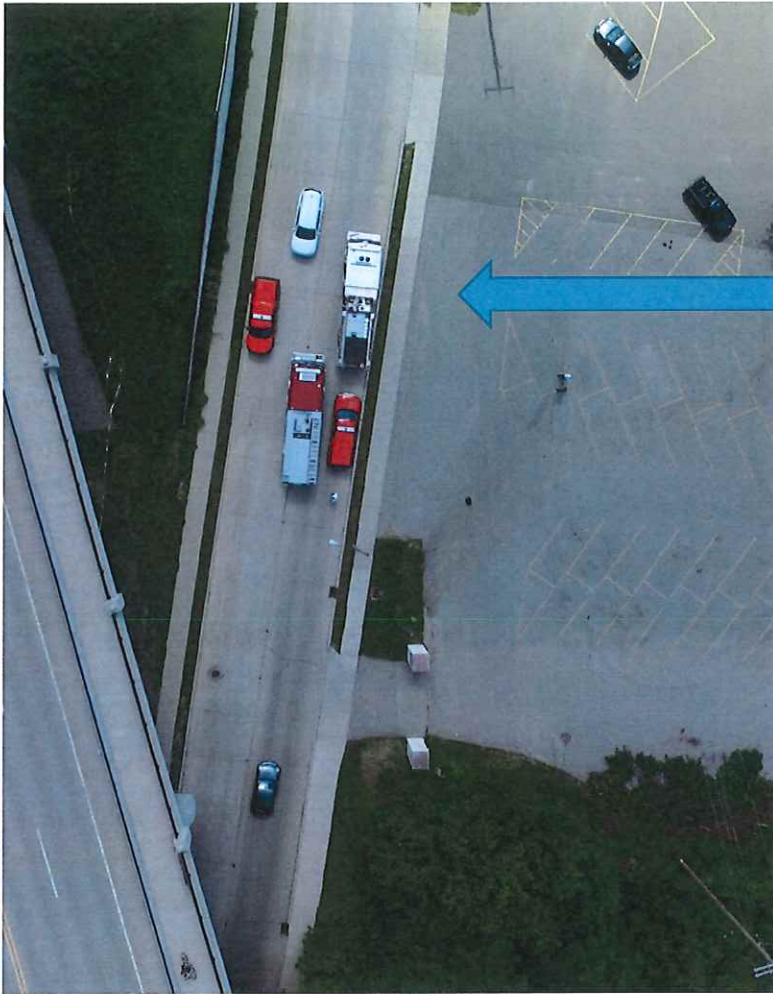
Red = Requesting making "No Parking"



This photo shows how larger vehicles (buses for football games) park along one side of the street, with smaller vehicles parking on both sides.

This allows only one lane of traffic for an emergency vehicle to travel.





This image shows how when opposing traffic comes together there is no way for vehicles to pass, or get thru the parked traffic.

When traffic is parked on both sides, there is nowhere for vehicles to move out of the way of emergency vehicles.