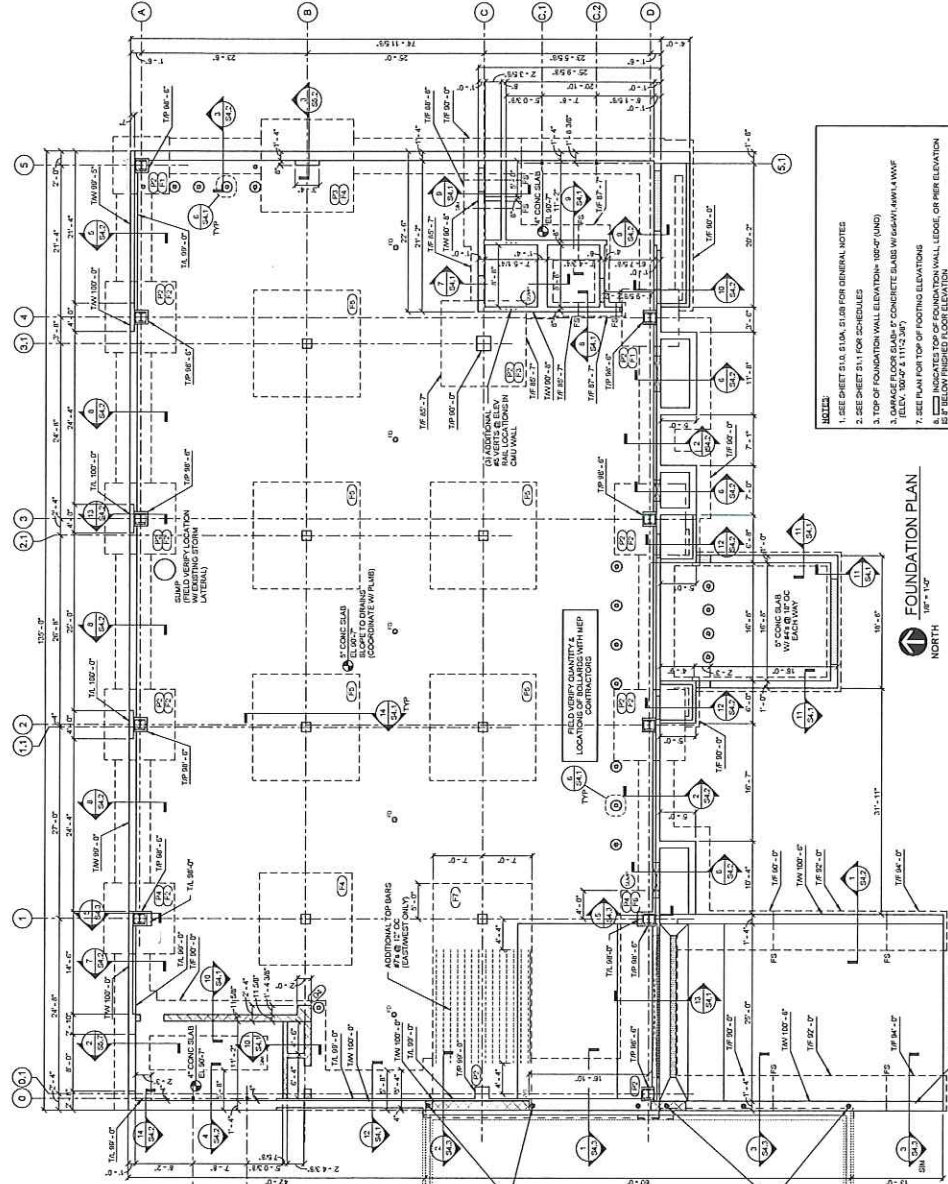


FOUNDATION REFERENCE ISOMETRIC



- NOTES:**
- SEE SHEET S1.8, S1.9 FOR GENERAL NOTES
 - SEE SHEET S1.1 FOR SCHEDULES
 - TOP OF FOUNDATION WALL ELEVATION: 100'-0" (UND)
 - TOP OF CONCRETE SLAB W/ 6# @ 18" OC W/ WF (ELEV. 100'-2" & 110'-3.45")
 - SEE PLAN FOR TOP OF FOOTING ELEVATIONS
 - INDICATES TOP OF FOUNDATION WALL, LEDGE, OR PERK ELEVATION
 - BELOW FINISHED FLOOR ELEVATION
 - PS = FOOTING STEP (SEE DETAIL 100A.1)
 - MS = WALL STEP
 - LS = LEDGE STEP
 - (CF) INDICATES ISOLATED FOOTING - SEE SCHEDULE
 - (CS) INDICATES CONCRETE PERK - SEE SCHEDULE

FOUNDATION PLAN
 1/8" = 1'-0"

PROVIDE VERTICAL & LATERAL TEMPORARY SUPPORT TO FOUNDATION DURING EXCAVATION OF UNDERPINNING. SIZE & UNDERPINNING CONTRACTOR

PROVIDE VERTICAL & LATERAL TEMPORARY SUPPORT TO EXISTING ADJACENT BUILDING FOUNDATION DURING EXCAVATION OF UNDERPINNING. SIZE & UNDERPINNING CONTRACTOR

COORDINATE CONDUIT FOR OVERHEAD LOOK CARD HEADER