

SCS ENGINEERS



Closed City of Appleton Landfill

Past, Present, and Future

Presented by:
Tom Karwoski, PG
Leslie Busse, PE

Landfill Location



SCS ENGINEERS

Landfill Location (cont.)



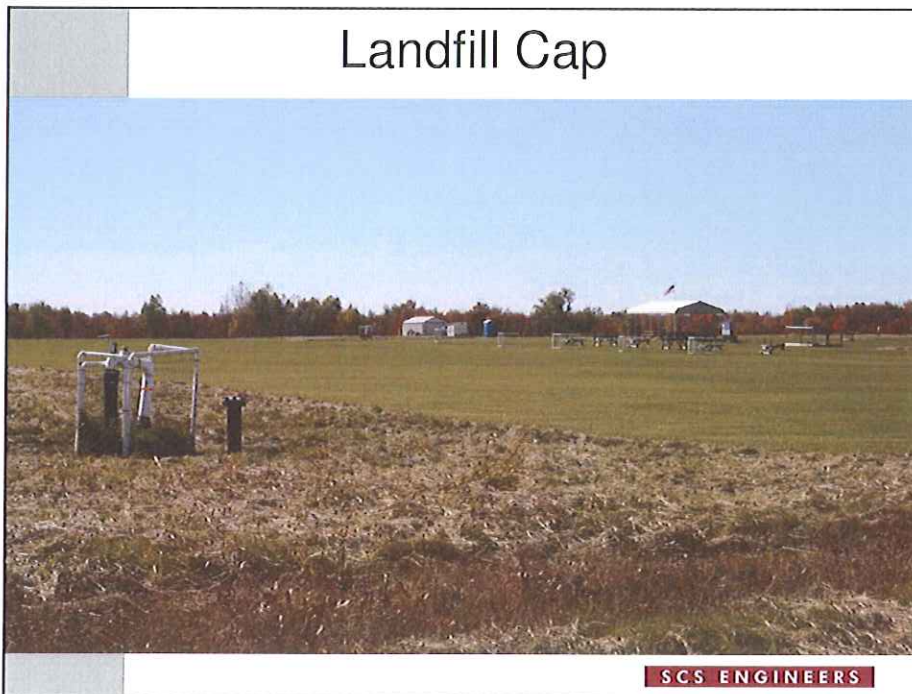
Landfill History

- Operated from 1955 through 1974
- Accepted municipal solid waste
- No clay liner
- No leachate collection
- WDNR approved clay cover and gas collection system completed in 1995

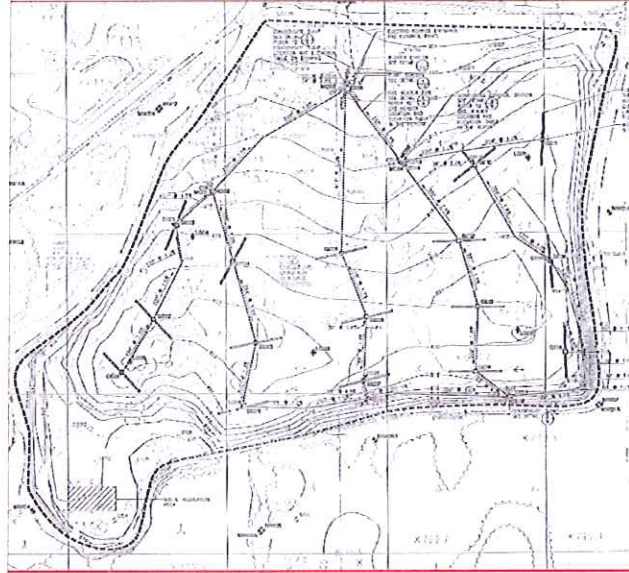
Landfill Features



Landfill Cap

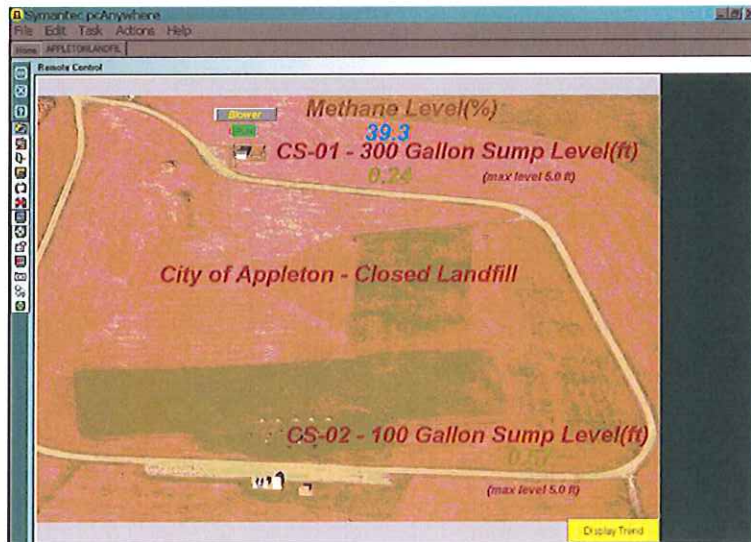


Landfill Gas Collection System



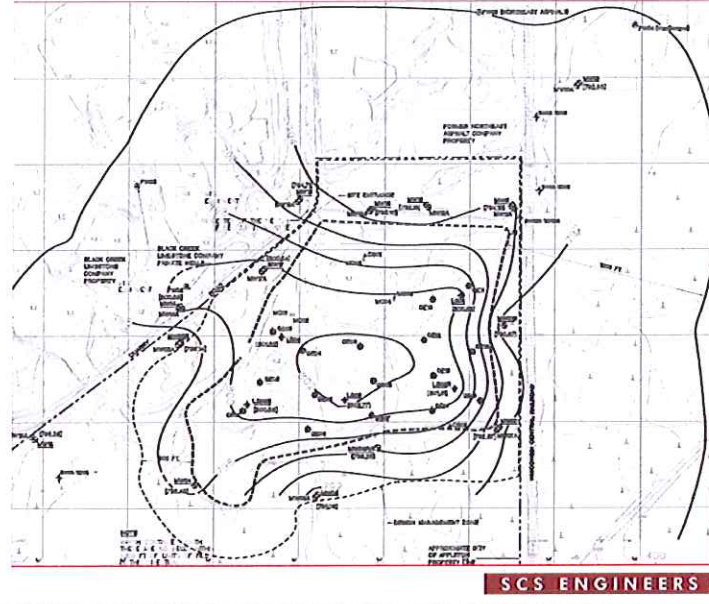
SCS ENGINEERS

Telemetry System



SCS ENGINEERS

Groundwater Monitoring System



Regulatory Requirements

- WDNR Permit requires:
 - Operation, maintenance and monitoring of the gas collection system
 - Operation, maintenance and monitoring of the groundwater monitoring wells
 - Semi-annual reporting

SCS ENGINEERS

Regulatory Requirements (cont.)

- SCS Engineers Operation, Maintenance and Monitoring Contract:
 - Monthly gas monitoring
 - Semi-annual groundwater monitoring
 - Annual surface water and sediment sampling
 - Semi-annual reporting
 - Continuous evaluation of telemetry data
 - Maintenance and repair of any problems with the gas collection or groundwater monitoring systems
 - Cap inspections with recommendations for any necessary repairs

SCS ENGINEERS

What Does the Future Hold?

- Goals
 - Cut gas monitoring costs by decreasing monitoring frequency and long term goal of passive gas venting
 - Cut groundwater monitoring costs by reducing the number of wells, parameters, or frequency of monitoring
 - Minimize cap maintenance costs by working with the City to care for the cap
 - Support additional uses for the landfill space

SCS ENGINEERS

Questions?

SCS ENGINEERS