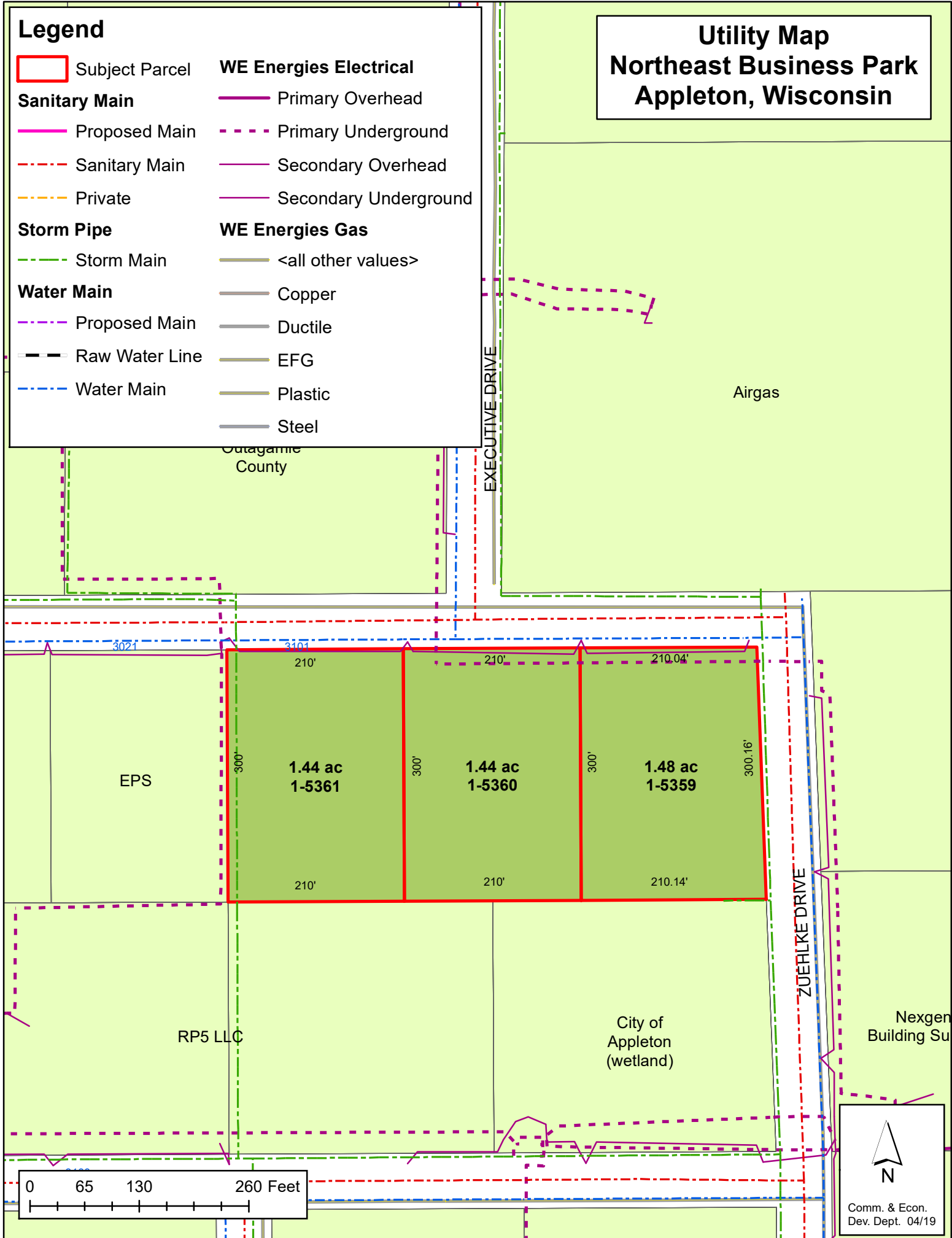


Legend

- Subject Parcel
- Sanitary Main**
- Proposed Main
- Sanitary Main
- Private
- Storm Pipe**
- Storm Main
- Water Main**
- Proposed Main
- Raw Water Line
- Water Main
- WE Energies Electrical**
- Primary Overhead
- Primary Underground
- Secondary Overhead
- Secondary Underground
- WE Energies Gas**
- <all other values>
- Copper
- Ductile
- EFG
- Plastic
- Steel

Utility Map Northeast Business Park Appleton, Wisconsin



Airgas

Outagamie
County

EXECUTIVE DRIVE

ZUERLKE DRIVE

3021 3101 210' 210' 210.04' 210.14' 300.16'

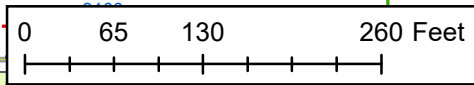
300' 210' 300' 210' 210.14'

EPS 1.44 ac 1-5361 1.44 ac 1-5360 1.48 ac 1-5359

RP5 LLC

City of
Appleton
(wetland)

Nexgen
Building Su



Comm. & Econ.
Dev. Dept. 04/19