

Cc: Steven J. Schrage <Steven.Schrage@Appleton.org>; Grant Daigle <Grant.Daigle@Miron-Construction.com>

Subject: Miron Erb park

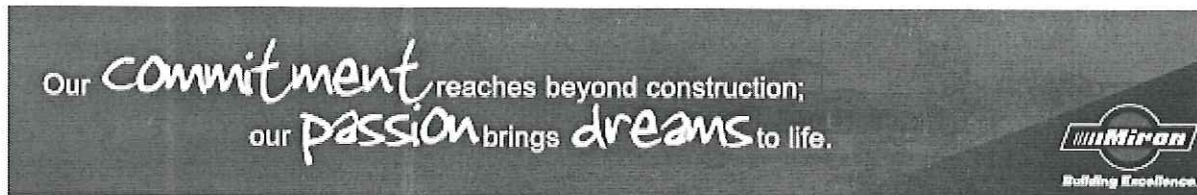
Ross,
I'm contacting you about putting Miron construction trailers in the road for period of time. I would place them on Morrison St by E. Parkway BLV Right by entrance to Erb park. I would place them in the street roughly around 3-20-17 until 6-12-17 roughly. I enclosed a site plan with mark ups where I would like to place these trailers in the road with measurements of how much road I would take and how much would be left for traffic. Let me know your thoughts.

Thank you,

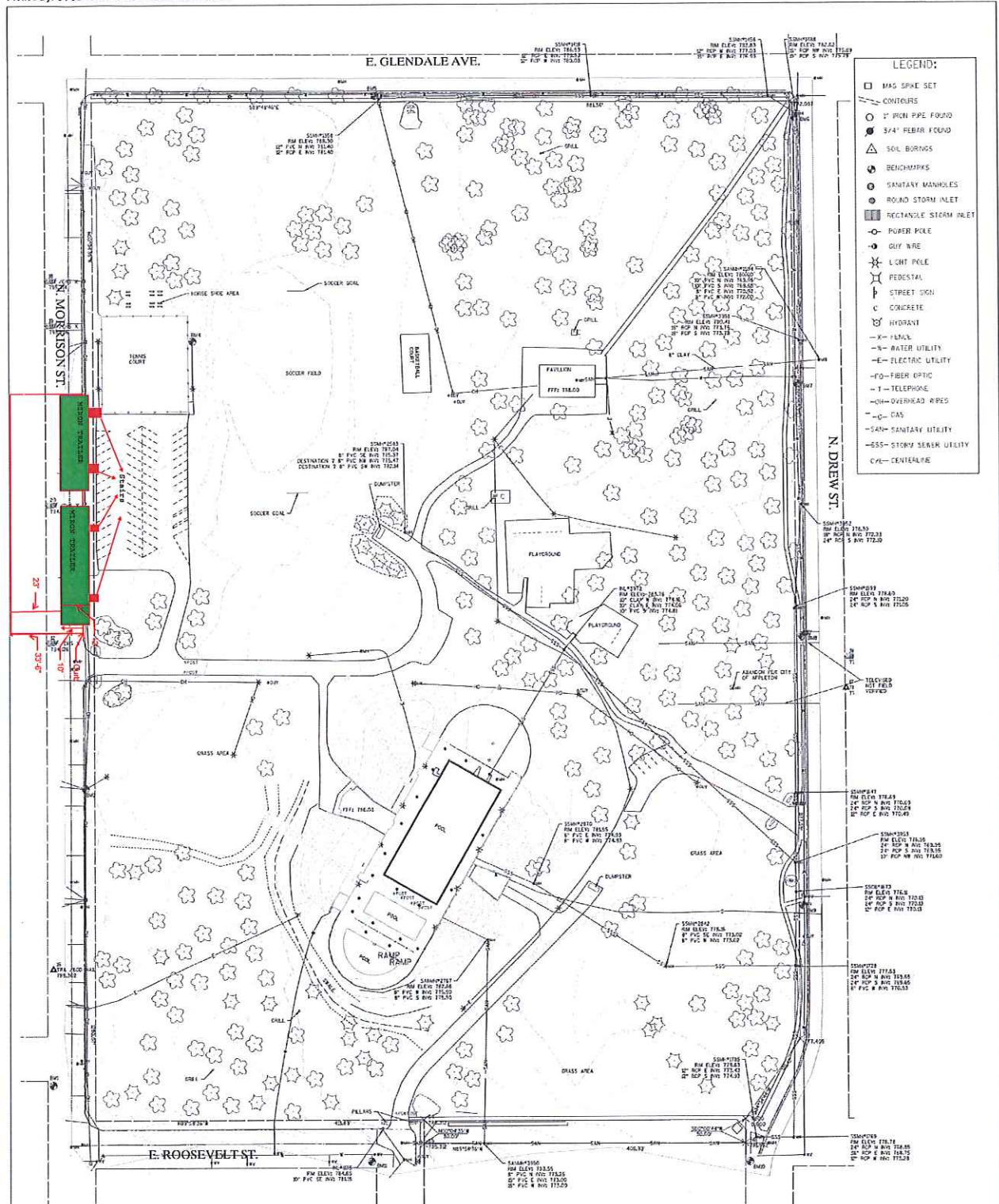
Have a great day!!

Barry Miller, LEED Green Associate
Project Superintendent, Civil
barry.miller@miron-construction.com

Miron Construction Co., Inc.
PH 920.969.7645



Miron Construction Co., Inc. is proud to be an Equal Opportunity Employer. We welcome and encourage ALL qualified applicants to apply for our open [career opportunities](#). This email and attachment(s) may contain privileged and confidential information and are intended for the addressee(s) only. If you have received this email in error, please notify the sender immediately and delete the message. Any other use, printing, copying, forwarding or retention of this email, is strictly prohibited.



- LEGEND:**
- MAG SPIKE SET
 - CONTOURS
 - 1" IRON PIPE FOUND
 - 3/4" REBAR FOUND
 - △ SOIL BURNING
 - BENCHMARKS
 - SANITARY MANHOLES
 - ROUND STORM INLET
 - RECTANGLE STORM INLET
 - POWER POLE
 - GUY WIRE
 - LIGHT POLE
 - PEDESTAL
 - STREET SIGN
 - CONCRETE
 - HYDRANT
 - X- FLAG
 - W- WATER UTILITY
 - E- ELECTRIC UTILITY
 - FO- FIBER OPTIC
 - T- TELEPHONE
 - OH- OVERHEAD WRES
 - C- GAS
 - SAS- SANITARY UTILITY
 - SS- STORM SEWER UTILITY
 - CPE- CENTERLINE

- BENCHMARKS:**
- | ID | DESCRIPTION | ELEVATION |
|----|---|-----------|
| 1 | TOP W/LS BELM TOP NUT IN COIL ROSSVILLE & MORRISON | 112.34 |
| 2 | TOP W/LS BELM TOP NUT IN COIL ROSSVILLE & DREW | 112.34 |
| 3 | CONCRETE & LIGHT POLE BASE NE CORN OF MORRISON COURT | 112.34 |
| 4 | TOP W/LS BELM TOP NUT IN COIL OF POOL & JAY GLENDALE | 112.34 |
| 5 | TOP W/LS BELM TOP NUT IN COIL OF POOL & JAY GLENDALE | 112.34 |
| 6 | TOP W/LS BELM TOP NUT WESTSIDE OF INTERSECTION OVER A RAIL | 112.34 |
| 7 | TOP W/LS BELM TOP NUT WESTSIDE OF INTERSECTION OVER A PARKWAY | 112.34 |
| 8 | TOP W/LS BELM TOP NUT WESTSIDE OF INTERSECTION OVER A PARKWAY | 112.34 |
| 9 | TOP W/LS BELM TOP NUT IN COIL ROSSVILLE & DREW | 112.34 |
| 10 | TOP W/LS BELM TOP NUT IN COIL ROSSVILLE & DREW | 112.34 |
| 11 | TOP W/LS BELM TOP NUT IN COIL ROSSVILLE & DREW | 112.34 |

NO.	DESCRIPTION	ELEVATION
BM1	1567874.3	828277.4
BM2	589246.3	826279.3
BM3	589246.3	826279.3
BM4	589246.3	826279.3
BM5	589246.3	826279.3
BM6	589246.3	826279.3
BM7	589246.3	826279.3
BM8	589246.3	826279.3
BM9	589246.3	826279.3
BM10	589246.3	826279.3
BM11	589246.3	826279.3

PROJECT MANAGER: DAV	DATE: 02/28/15	DRAWING NO: C1.0
SHEET DESCRIPTION		
<p>OMNI ONE SYSTEMS DRIVE APPLETON, WI 54912 (920) 835-8888</p>		

CITY OF APPLETON
ERB PARK AND POOL
1800 N. MORRISON ST.
DIRECTOR OF PARKS, RECREATION AND FACILITIES

