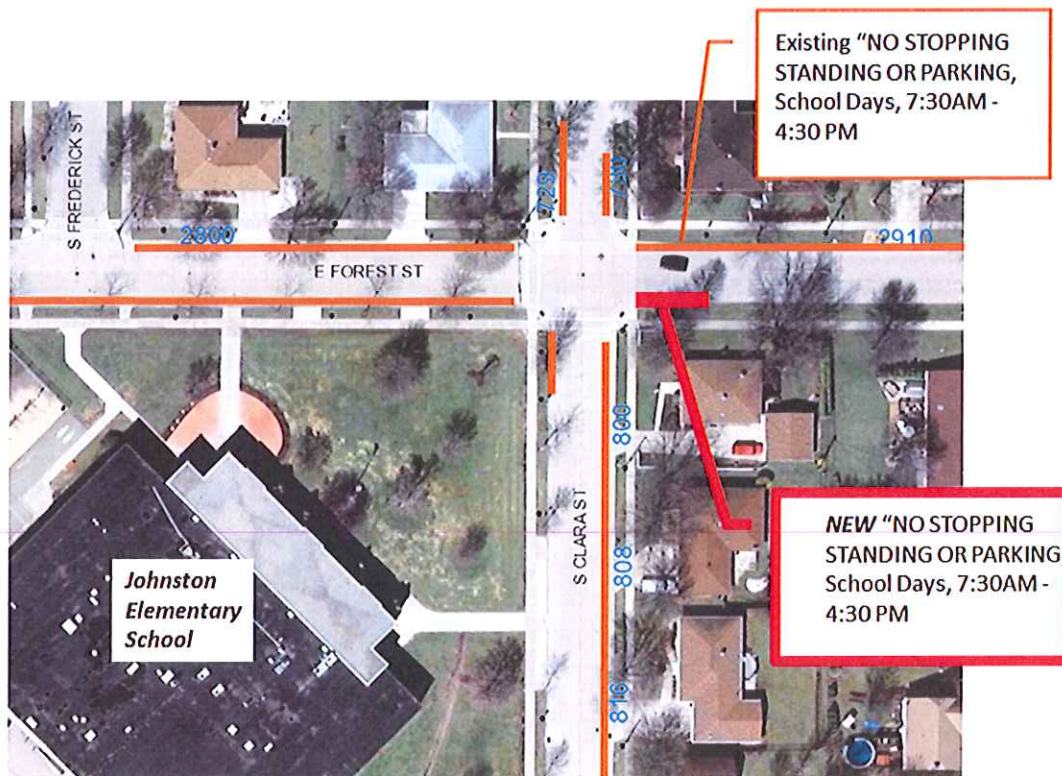


To: Municipal Services Committee
From: Michael S. Hardy, Assistant Traffic Engineer
Date: July 15, 2014
Re: Additional Parking Restriction on Forest Street, south side, east of Clara Street, near Johnston Elementary School

The Traffic Section was recently contacted by the Principal of Johnston Elementary School about extending the existing *No Stopping, Standing or Parking during school days* restriction near the school. The concern is specifically the location on the south side of Forest Street, just east Clara Street. The issue is cars are stopping and/or parking too close to the intersection during times of school arrival and release. This area should be kept clear of cars to provide optimal sight line for drivers and pedestrians navigating the intersection. This intersection is close to the main doors, so it is very active with vehicles and pedestrians.



Considering the complications described above, The Traffic Section concurs with the request by Johnston Elementary to extend the current parking restriction on the Forest Street, east of Clara Street.

To accomplish this, the following ordinance action is required:

1. **Create:** "Stopping, standing and parking be prohibited on school days from 7:30 a.m. to 4:30 p.m. on the south side of Forest Street from Clara Street to a point 35' east of Clara Street."