



CITY OF APPLETON

MEMORANDUM

Date: 05/5/2025
To: Municipal Services Committee
From: Michael Hardy, P.E., Traffic Engineer
Subject: Proposed parking changes on Drew St (1500N) and Circle St (400E)
Follow-up to a 6-month evaluation period

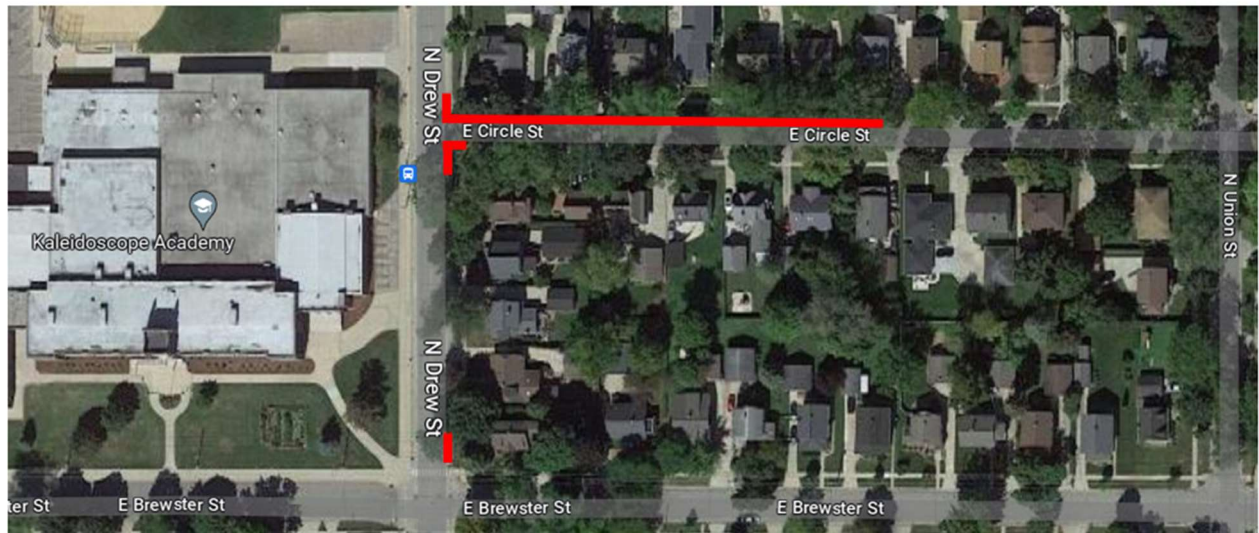
In response to concerns raised by Alderperson Croat and residents, the City's Traffic Section adjusted and expanded parking restrictions on Drew Street and Circle Street by Kaleidoscope Academy. There was an initial evaluation in fall of 2023 at the request of residents in response to Kaleidoscope Academy's building expansion and parking lot reconstruction that displaced all the teacher parking onto the surrounding streets, especially Circle Street. There was a revised evaluation initiated in fall of 2024 at the request of residents to scale back the restrictions once the building expansion was complete and their new parking lot was opened.

The latest evaluation was initiated in October of 2024. Based on correspondence with residents and our observations, we believe the latest parking restriction changes are working well. Based on this, we recommend the changes be made permanent.

To accomplish this, the following ordinance action is required:

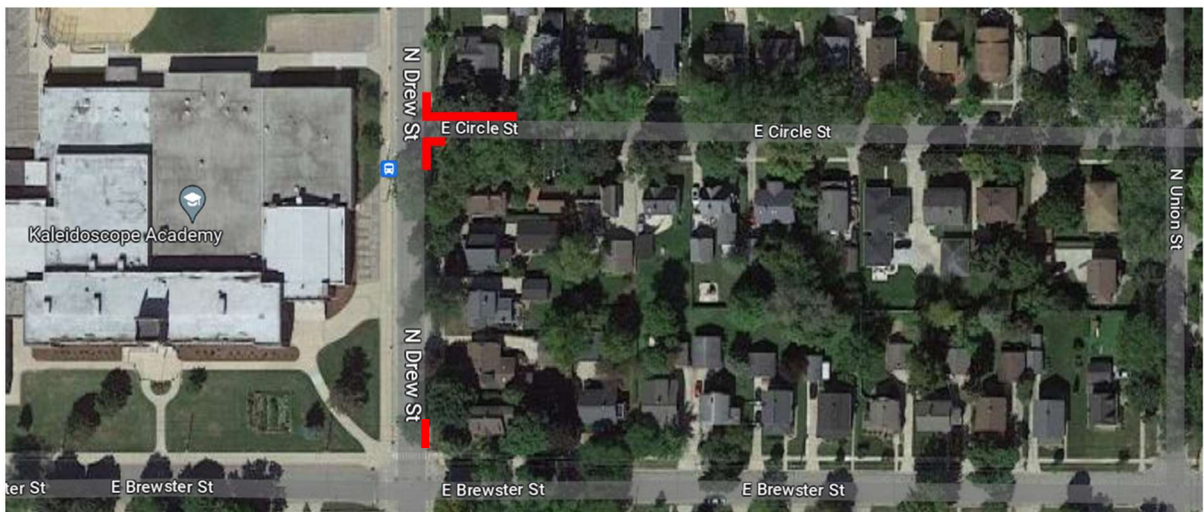
1. **Create:** Stopping/standing/parking be prohibited on school days from 7:00 a.m. to 4:00 p.m. on the east side of Drew Street from Brewster Street to a point 15 feet north of Brewster Street."
2. **Create:** "Parking be restricted to two hours on school days from 7:00m a.m. to 4:00 p.m. on east side of Drew Street from a point 15 feet north of Brewster Street to a point 37 feet south of Circle Street."
3. **Create:** Stopping/standing/parking be prohibited on school days from 7:00 a.m. to 4:00 p.m. on the east side of Drew Street from Circle Street to a point 37 feet south of Circle Street to a point 17 feet north of Circle Street."
4. **Create:** Stopping/standing/parking be prohibited on school days from 7:00 a.m. to 4:00 p.m. on the south side of Circle Street from Drew Street to a point 20 feet east of Drew Street."
5. **Create:** Stopping/standing/parking be prohibited on school days from 7:00 a.m. to 4:00 p.m. on the north side of Circle Street from Drew Street to a point 65 feet east of Drew Street."

Figure #1: Initial Trial - Fall 2023 when Kaleidoscope Academy Building Expansion and Parking Lot Closure



— = NO STOPPING, STANDING, or PARKING on School Days 7:00AM – 4:00PM

Figure #2: Revised Trial - Fall 2024 when Kaleidoscope Academy Building Expansion Complete and New Parking Lot Opened.



— = NO STOPPING, STANDING, or PARKING on School Days 7:00AM – 4:00PM