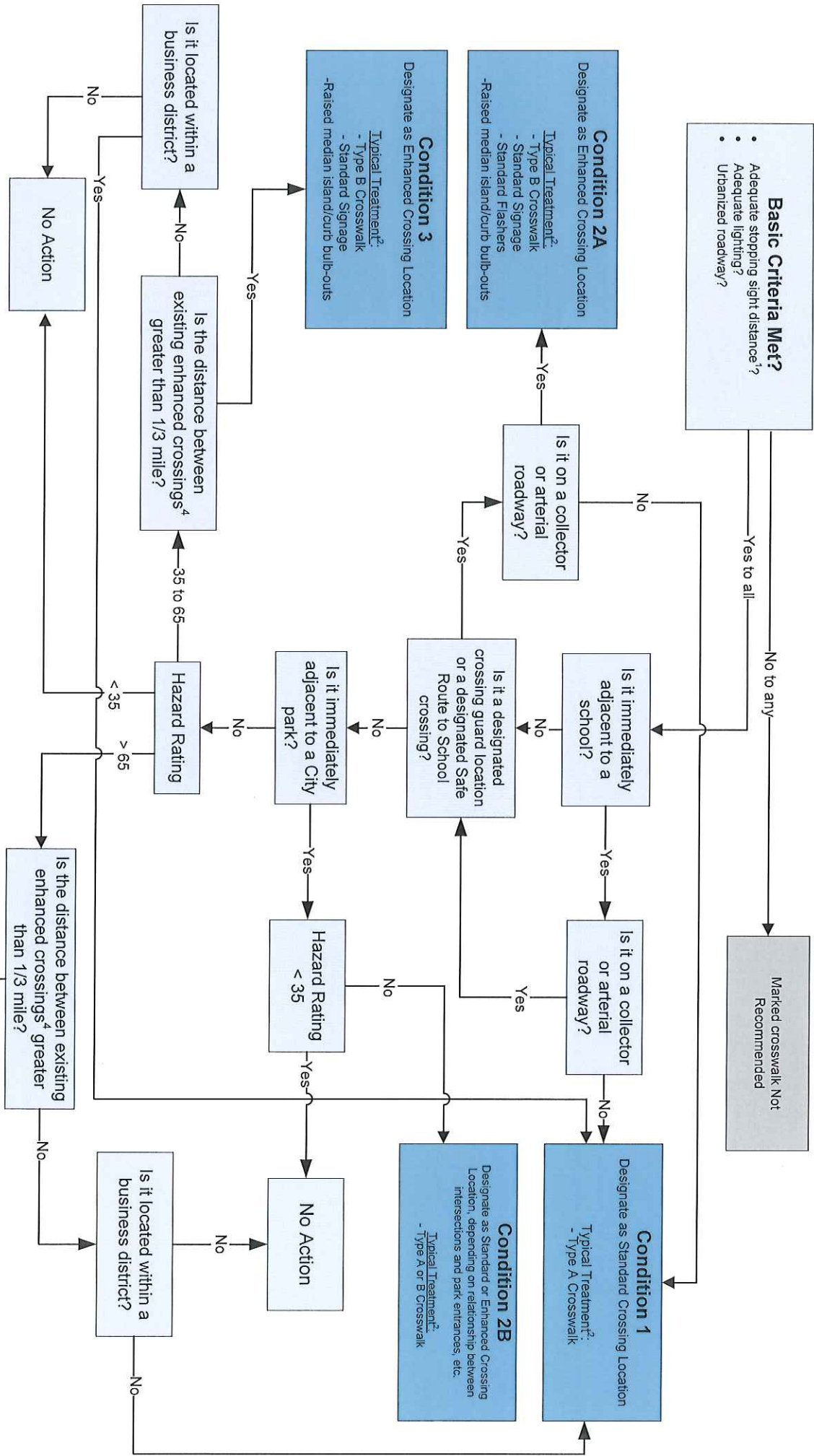


DRAFT

Crosswalk Installation Evaluation Guidance for Uncontrolled crossings at Intersections



Notes:
 This document is intended to provide guidance only. Each intersection under evaluation shall be reviewed on a case-by-case basis to ensure context sensitivity and compliance with applicable regulations and design standards.

¹ As defined by AASHTO
² Actual treatments to be determined by the Traffic Section on a case-by-case basis.
³ Represents minimum treatments. Actual treatments to be determined by the Traffic Section on a case-by-case basis.
⁴ Examples of "enhanced crossings" include: traffic signal, pedestrian hybrid beacon, pedestrian-actuated RFRB systems, and other substantial treatments, or combination of treatments.

Condition 1
 Designate as Standard Crossing Location
 - Typical Treatment²:
 - Type A Crosswalk

Condition 2A
 Designate as Enhanced Crossing Location
 - Typical Treatment²:
 - Type B Crosswalk
 - Standard Signage
 - Standard Flashers
 - Raised median island/curb bulb-outs

Condition 3
 Designate as Enhanced Crossing Location
 - Typical Treatment²:
 - Type B Crosswalk
 - Standard Signage
 - Raised median island/curb bulb-outs

Condition 4
 Designate as possible Enhanced Crossing location Engineering study required. Likely will require significant enhancements & investment.
 - Typical Minimum Treatment³:
 - Type B Crosswalk
 - High visibility flashers/signage/markings
 - Raised median island/curb bulb-outs